

Kenai Peninsula Borough School District



Kenai Central High School Job Shadow Day



Borough Assembly Quarterly Update
March 1, 2022
Superintendent Clayton Holland



Celebrations



Alaska
Science



Alaska
Jason Daniels



Jason Daniels

Kalifornsky Beach Elementary School
Soldotna, Alaska

"The Presidential Award is a symbol of teaching with many excellent teachers who are deserving. I am humbled to receive this honor. The award is a reflective journey of professional development and growth as a teacher as a result. It honors my students and families and administrators that believed in me and I am grateful for their support. The greatest reward in my teaching is to see my students succeed in their learning."



Presidential Awards for Excellence in Mathematics and Science Teaching

Jason Daniels, K-Beach Elementary
National Presidential Award for Excellence in Mathematics and Science Teaching (PAEMST) awardee

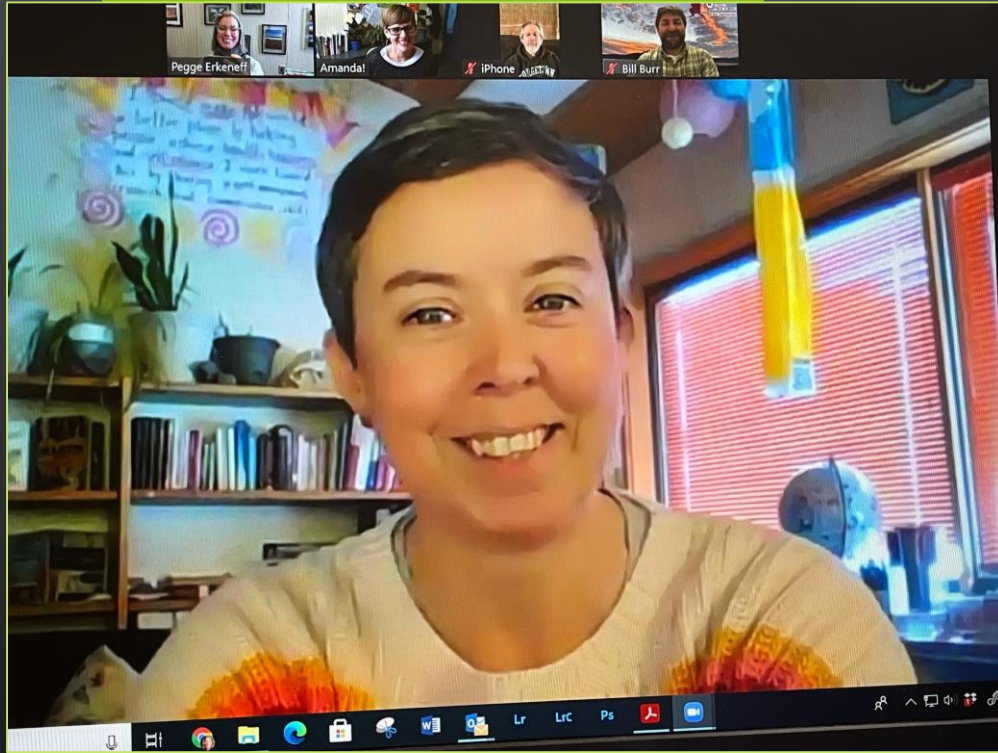


Kim Leslie, Distance Learning
Claes Nobel Educator of Distinction



Diane Buchanan, Student Nutrition
2022 Alaska School Nutrition Association Administrator of the Year

Celebrations



Billeen Carlson, Nikolaevsk School
Alaska Society for Technology Education
ASTE Teacher of the Year



KPBSD
Finance
Department



Sara DeVold, Connections Homeschool
Statewide ASTE iDidAContest Wearable Art
Design "Illuminations" winner

STAFFING RATIOS

- 20.5:1** Type of School and Pupil-To-Teacher Ratio (PTR)
Elementary schools with more than 250 enrolled students:
Kindergarten
- 22.5:1** Elementary schools with more than 250 enrolled students:
Grades 1-3
- 24.5:1** Elementary schools with more than 250 enrolled students:
Grades 4-6
- 19.5:1** Elementary small schools with 100 to 250 enrolled students:
Grades K-6
- 25.1** Middle and High schools
- 17.5:1** Small schools with less than 200 enrolled students:
Grades K-6

PERSONNEL 2020-2021



District administration: 11
Building administration: 37
Certified staff: 645
Support staff: 470
Total: 1,163

Recruitment



Kenai Peninsula Borough School District

Virtual PreK-12 Education Career Fairs



Are you an educator curious about opportunities to teach and live in Alaska?

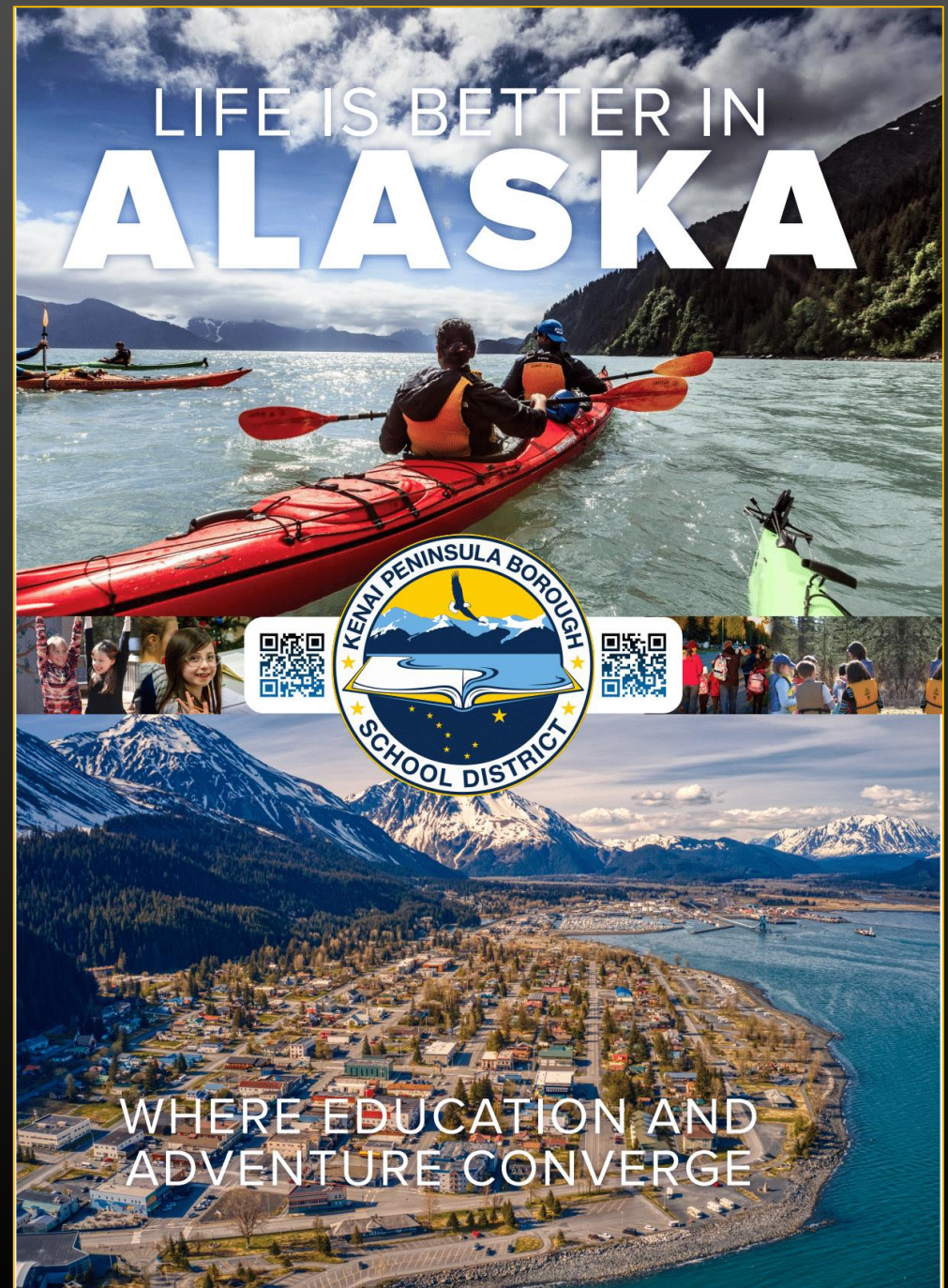
Here's your virtual Job Fair lineup to talk to the KPBSD team!

WHEN?	TIME (AKST)	REGION
Thurs., Feb. 10	9:00 - 1:00 PM	Mid-Atlantic
Tues., Feb. 15	9:00 - 1:00 PM	Great Lakes
Wed., Feb. 16	9:00 - 11:00 AM	New England
Wed., Feb. 16	11:00 - 1:00 PM	Southeast
Thurs., Feb. 17	10:00 - 2:00 PM	Southwest
Tues., Feb. 22	11:00 - 3:00 PM	Rocky Mountains
Wed., Feb. 23	10:00 - 2:00 PM	Plains
Thurs., Feb. 24	12:00 - 4:00 PM	West



REGISTER TO ATTEND go to <https://cfplus.page.link/yPH9> or www.aeee.org
Search the AAEE 2022 PreK-12 Education Career Fairs under "Events"
APPLY go to KPBSD.org and visit the Human Resources webpage, or find the "Apply Now" icon!

Kenai Peninsula Borough School District 148 N. Binkley St. Soldotna, Alaska 99669
apply: www.KPBSD.org | 907.714.8845 | e: Teach@KPBSD.org



LIFE IS BETTER IN ALASKA

WHERE EDUCATION AND
ADVENTURE CONVERGE



Literacy

SB111 – Alaska Reads



Literacy Pre-K

#KenaiPeninsulaReads
#AKreads
SB111 and HB164

2021-2022 Title I funded Pre-K programs

1. Chapman School
2. Mountain View Elementary
3. Nikiski North Star
4. Ninilchik School
5. Redoubt Elementary
6. Seward Elementary
7. Tustumena Elementary
8. Sterling Elementary
9. Voznesenka School

Special Education Pre-K
Homer, Kenai,
Seward, and Soldotna

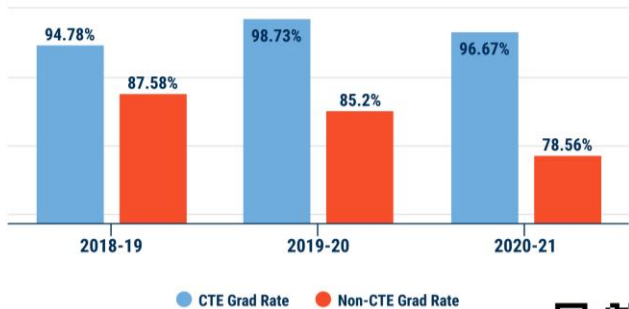
"Literacy is the building block of all education. The KPBSD supports legislation that creates a statewide comprehensive K-3 reading policy to improve education outcomes for our students. Students across our entire state deserve high quality Preschool, and curriculum and instruction based on the science of reading. Now is the time for our state to come together on this critical issue."
–Superintendent Clayton Holland



Kenai Peninsula Borough School District
One district, 42 diverse schools
148 N. Binkley Street, Soldotna, AK 99660
www.KPBSD.org | 907.714.8888



Graduation Rate: with two + CTE classes



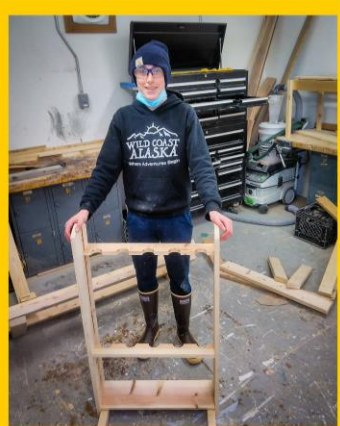
CTE is a broad term for education that combines academic and technical skills with the knowledge and training needed to succeed in today's labor market. CTE provides students of all ages with the academic and technical skills, knowledge and training necessary to succeed in future careers and to become lifelong learners.

In 2022, KPBSD is tracking HB108: Concurrent Secondary & Trade School

Community partners in CTE



CTE in KPBSD



CTE Pathways in KPBSD

- Business & Information Systems
- Construction, Architecture & Drafting
- Engineering
- Digital Electronics
- Health Science
- Hospitality & Tourism
- Human Services
- Natural Resources
- Transportation

Facebook: @KPBSDCareerTechnicalEducation

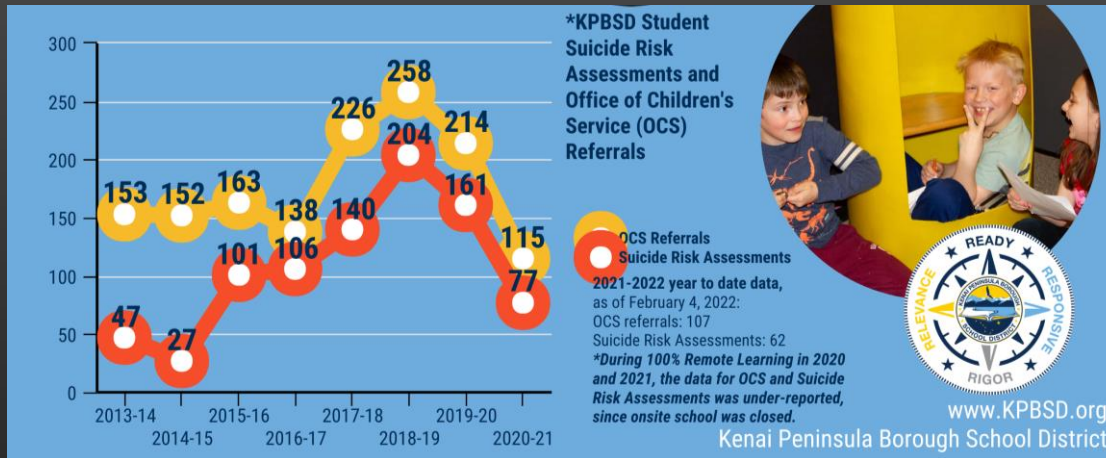


Kenai Peninsula College: Emergency Trauma Technician



Seward area Iron Mountain Future Farmers of America Career and Technical Student Organization

Social and Emotional Development



Social and Emotional Development (SEL)

"The Social Emotional development of our students is key to having our students engaged in learning and becoming healthy members of our communities. In this time of stress and uncertainty, this work is more important than ever."
 -Superintendent Clayton Holland

- Supports provided by the school district**
- Nurses
 - School Counselors
 - School Psychologists
 - Student Success Liaisons (SSLs)
 - Homeless Liaisons
 - Professional Development for staff
 - Interventionists, RTI, PBIS
 - Special Education Behavioral Programs
 - Competitive Grant funding**
 - Sources of Strength Restorative Practices,
 - Youth Mental Health First Aid,
 - Trauma Informed Educators



ACES : An adverse childhood experience (ACE) describes a traumatic experience in a person's life occurring before the age of 18 that the person remembers as an adult.



Seward High School, Sources of Strength (SOS)

Legislative Updates

- **SB111 Alaska Reads (Early Education; Reading Intervention)**
- **HB272 Increase BSA**
- **HB273 Inflation Proof BSA**
- **Long Term State Fiscal Plan**

Photos:
KPBSD Juneau fly-in with school board student representatives, board members, and superintendent of schools
Senator Murkowski visits Mountain View Elementary



HB272 Increase BSA and HB273 Inflation Proof BSA

Kenai Peninsula Borough School District
School Finance and The BSA
 HB272 and HB273

"A long-term state fiscal plan and forward funding of K-12 education will provide predictability for school districts, and is necessary for positive student outcomes." -Superintendent Clayton Holland

HB272 - Increase Base Student Allocation (BSA)

HB272: Increase Base Student Allocation, provide for an effective date
 Current BSA: \$5,930

July 1, 2022:
 $\$5,930 + \$253 = \$6,153$

July 1, 2023:
 $\$6,153 + \$55 = \$6,208$

A BSA increase of \$253 in 2022-2023 school year for the Kenai Peninsula Borough School District:
\$3,854,470

A BSA increase of \$55 in 2023-2024 school year:
\$950,654
(based on FY23 projected enrollment)

The KPBSD projects a FY23 status-quo budget deficit of:
<\$7,018,488>

In FY24 and future years, KPBSD projects continued status quo deficit budgets

HB273 - Inflation Proof the Base Student Allocation (BSA)

If HB273 passes, in FY23, KPBSD would receive an additional **\$1,676,608** through the Foundation Formula, based on projected enrollment. The FY23 BSA would become \$6,027 with the inflation proofing formula*, in contrast to the current \$5,930 BSA.

*Each Fiscal Year, the BSA would be inflation proofed based on the average of three prior Calendar Years of the CPI of Urban Alaska, less one lag year.

The BSA formula calculation is from the "Increasing and Inflation Proofing the Base Student Allocation" presentation, by Ariel Svetlik, Staff to Representative Andi Story

Kenai Peninsula Borough School District
K-12 Education COVID-19 Federal Relief Funding

I. CARES Act
 Coronavirus Aid, Relief, and Economic Security Act
Elementary and Secondary School Emergency Relief (ESSER I) fund
\$2,295,953
 Fully expended in FY21, from March 2020 - June 30, 2021

II. CRRSA Act
 Coronavirus Response and Relief Supplemental Appropriations
Elementary and Secondary School Emergency Relief (ESSER II) fund
\$9,080,405
 Fully Expended in FY21 from March 2020 - June 30, 2021

- Retain FY21 staffing levels: 48.5 FTE Certified staff; 9.70 FTE Support Staff
- Maintain PTR at current levels: 27 FTE positions
- Elementary School Counselors, Student Success Liaisons

Funding to support K-12 education in response to the COVID-19 pandemic was provided to Alaska through three relief Acts. Each Act contains specific set-asides, or funding allocations, to school districts.
 State of Alaska DEED Covid-19 Dashboard
<https://bit.ly/33dBrdz>

COVID-19 in the KPBSD Hub
[Covid19.KPBSD.org](https://www.kpbsd.org/covid19)
 Review the mitigation plan, school operations dashboard, Symptom Free Schools Protocol, and related resources

III. ARP Act
 American Rescue Plan
Elementary and Secondary School Emergency Relief (ESSER III) fund
\$20,414,897
 Funds available July 1, 2021 - June 30, 2024

- Maintain staffing levels currently supported by ESSER II funds, through period of availability
- \$4,082,979, which is 20% of the ESSER III funding, is reserved to address learning loss through the implementation of evidence-based interventions such as summer learning or enrichment, extended school day, and comprehensive afterschool programs

One district, 42 diverse schools, in 17 communities

www.KPBSD.org

School Operation Updates:

Kenai Peninsula Borough School District



**Friday
Early Release Days**



COVID-19 Mitigation Plan Updates

effective Friday, March 4, 2022



Kenai Peninsula Borough School District
www.KPBSD.org

THANK YOU!



Questions?

The mission of the Kenai Peninsula Borough School District is to empower all learners to positively shape their futures.

www.KPBSD.org



Thank you for your leadership!