

DESK PACKET

(MATERIALS SUBMITTED AFTER MEETING PACKET PUBLICATION)

G. OTHER

- 1. Kenai River Center Anadromous Waters Habitat Protection Annual Review**

**KPB 21.18 ANADROMOUS WATERS
HABITAT PROTECTION
ANNUAL REVIEW**

River Center Manager

Samantha Lopez

May 13, 2024

DONALD E. GILMAN RIVER CENTER

The Donald E. Gilman River Center is a multi-agency permitting and outreach center.

We house several permitting programs, streamlining the permitting process:

- KPB Planning & Zoning
- KPB Floodplain Management
- KPB Habitat Management
- ADFG Habitat



21.18 - PERIODIC REVIEWS

Annual review: A staff report to the Planning Commission regarding permitting & trending activities

5-year review (2025): Staff review to the Planning Commission & Assembly for any code changes

3-year review (2024): Staff review to update KPB's regulated anadromous waters



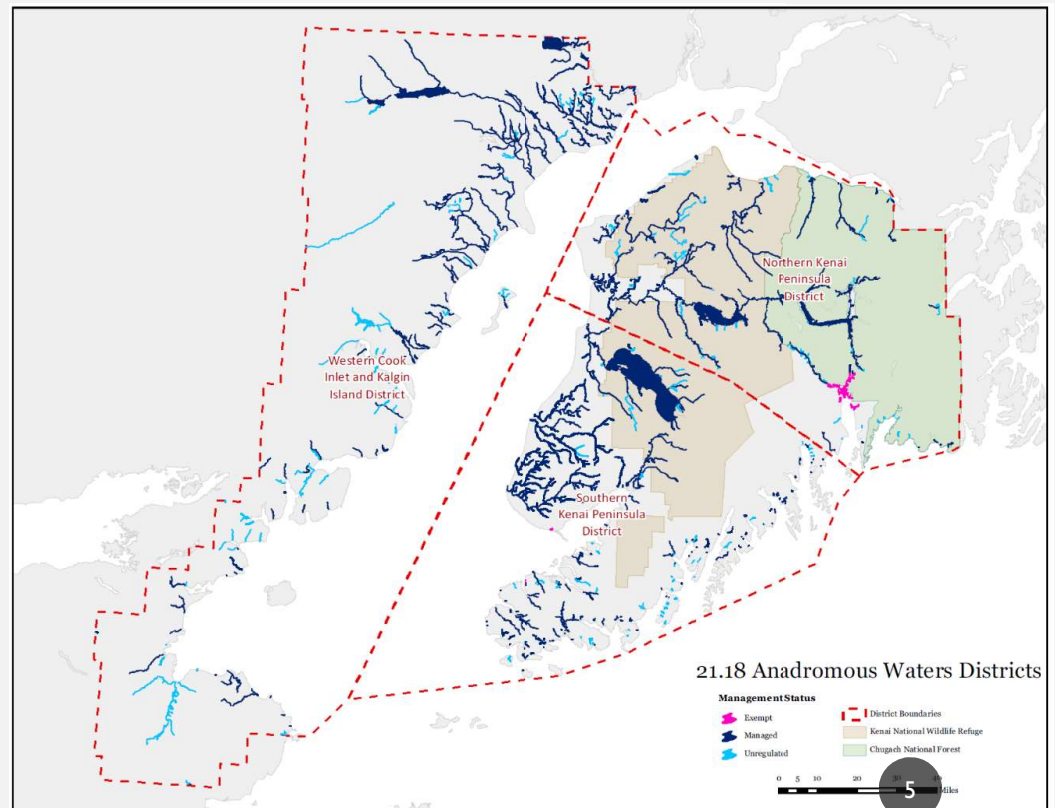
K-Beach Elementary
Kenai Watershed Forum's
Adopt-a-Stream Program, 2002

KPB 21.18 ANADROMOUS WATERS

Habitat Protection District

“all lands within 50 horizontal feet of anadromous water bodies”

- 793 waterbodies
- 2,337 miles of streams & rivers
- 70 lakes
- Over 28,000 acres



WHAT DO YOU NEED A PERMIT FOR?

Permit Needed

- Bank Restoration
 - Spruce Tree Revetments
 - Root Wads
 - Brush Layering
 - Elevated, light-penetrating walkways (ELP's)
 - Tree Cutting
- General Construction
 - Permanent structures, filling, grading
- Infrastructure
 - Culverts, bridges, roads

No Permit Needed

- Vegetation Maintenance
 - Trimming, pruning
 - Planting native vegetation
 - Removing naturally downed trees
- Maintenance of prior-existing uses
- Removing derelict structures
- Flagpoles

RESTORATION PROJECTS



INFRASTRUCTURE PROJECTS



RIP RAP

- Impervious surfaces are not allowable
 - Accelerates erosion
 - Can damage adjoining properties
 - Provide significantly less fish habitat
- When do we allow rip rap?
 - Public Infrastructure
 - Transportation (highways, railroads)
 - Utilities (power stations)
 - i.e. for the protection of essential public services



A photograph of a rainbow trout in a stream. The fish is in the foreground, swimming over a rocky riverbed. The water is clear, showing the rocks and some fallen branches. A white rectangular box with a black border is overlaid on the upper part of the image, containing the text "THE PURPOSE OF KPB 21.18".

THE PURPOSE OF KPB 21.18

THE PURPOSE OF KPB 21.18



Before & after restoration



THE PURPOSE OF KPB 21.18



TYPES OF PERMITS

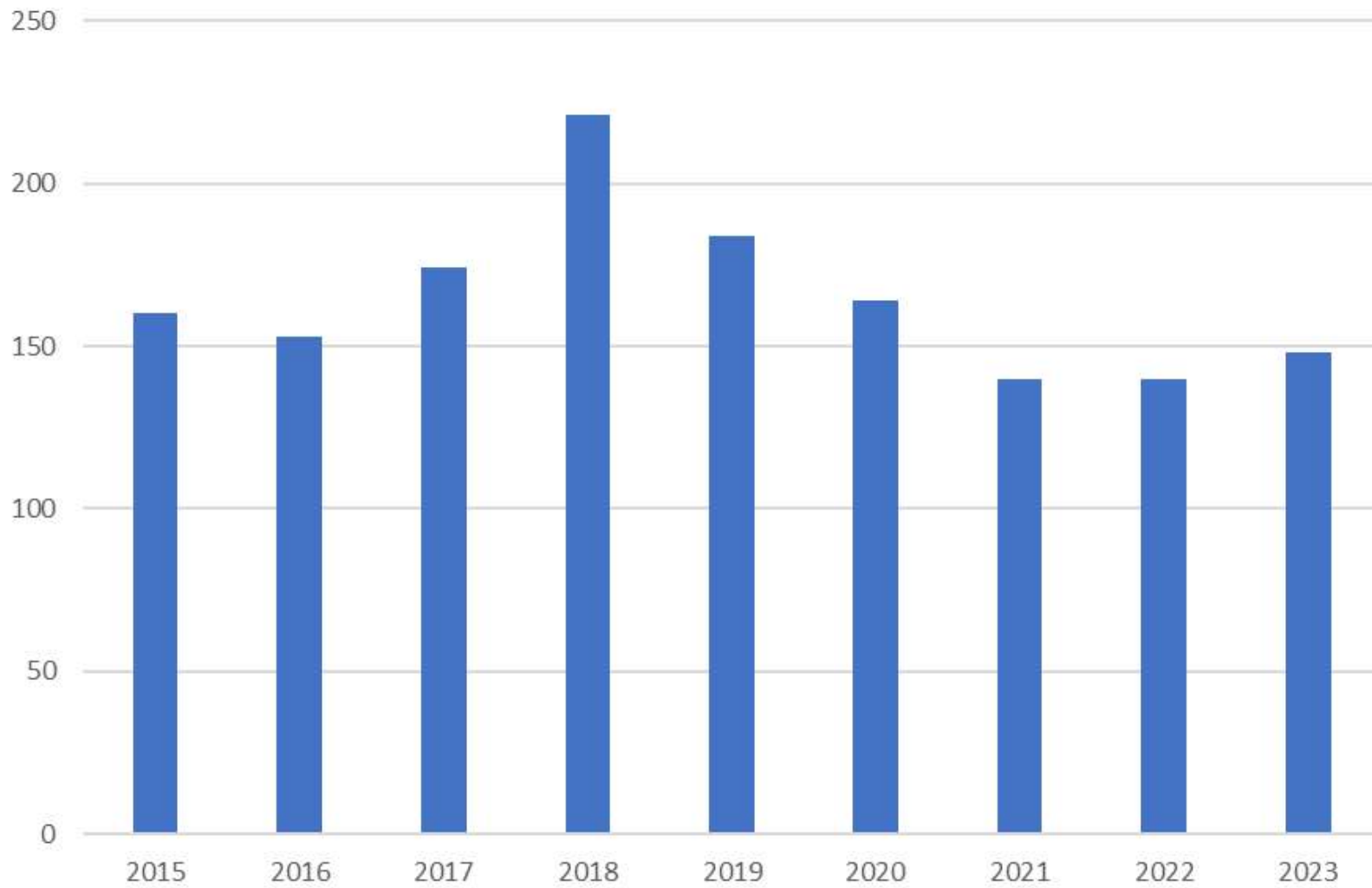
Permit Types

- Tree Cutting Permits
 - Same day – counter, email, etc.
- Staff Permits
 - New projects
 - Prior existing uses
 - Emergency authorizations
- Conditional Use Permits

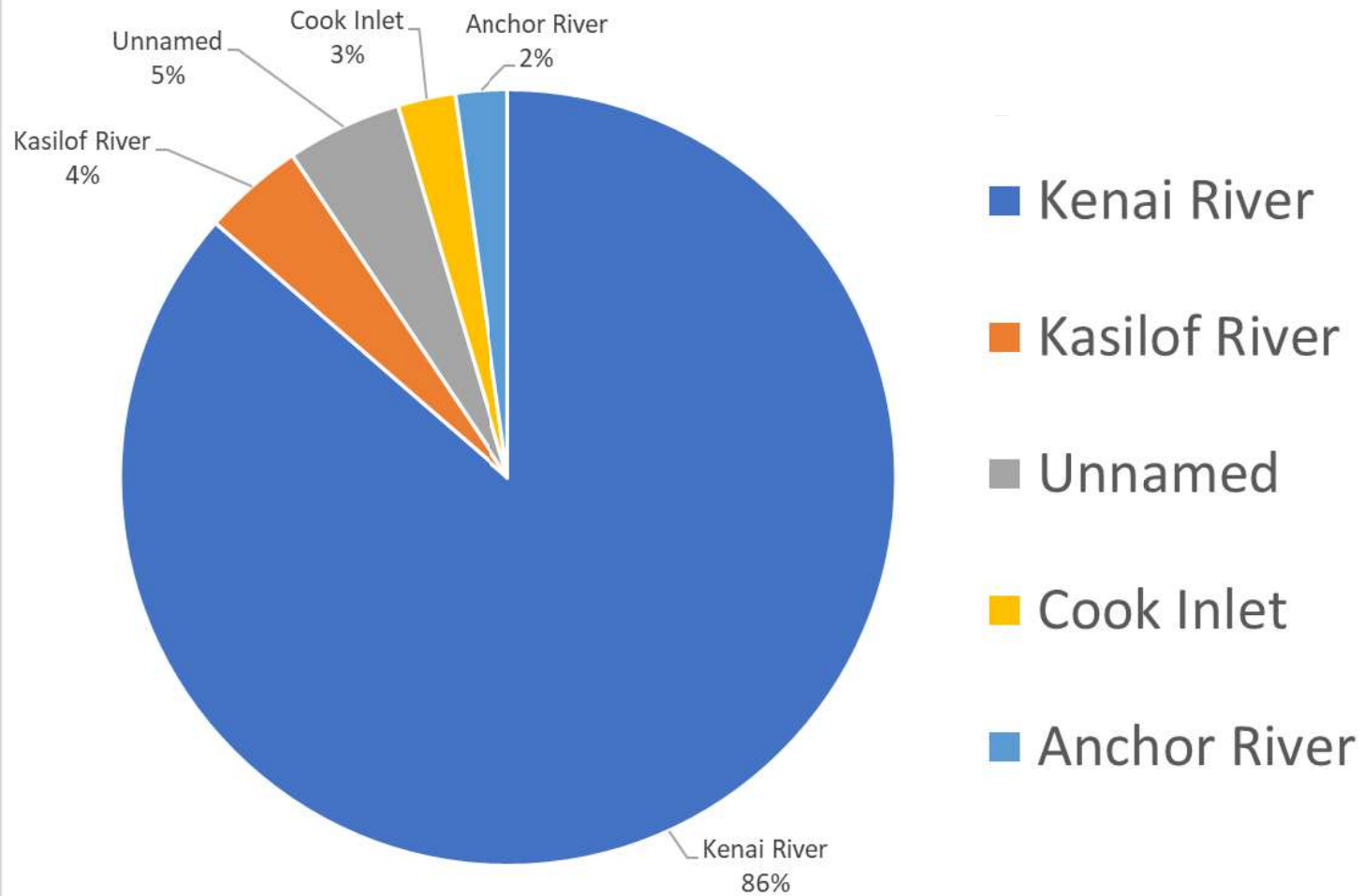
Conditional Use Permits

- Issued by the KPB Planning Commission
 - Fish cleaning stations
 - Fences
 - Signs
 - Public facilities and infrastructure
 - Wells and waterlines
 - ADA structures
 - Boat launches*

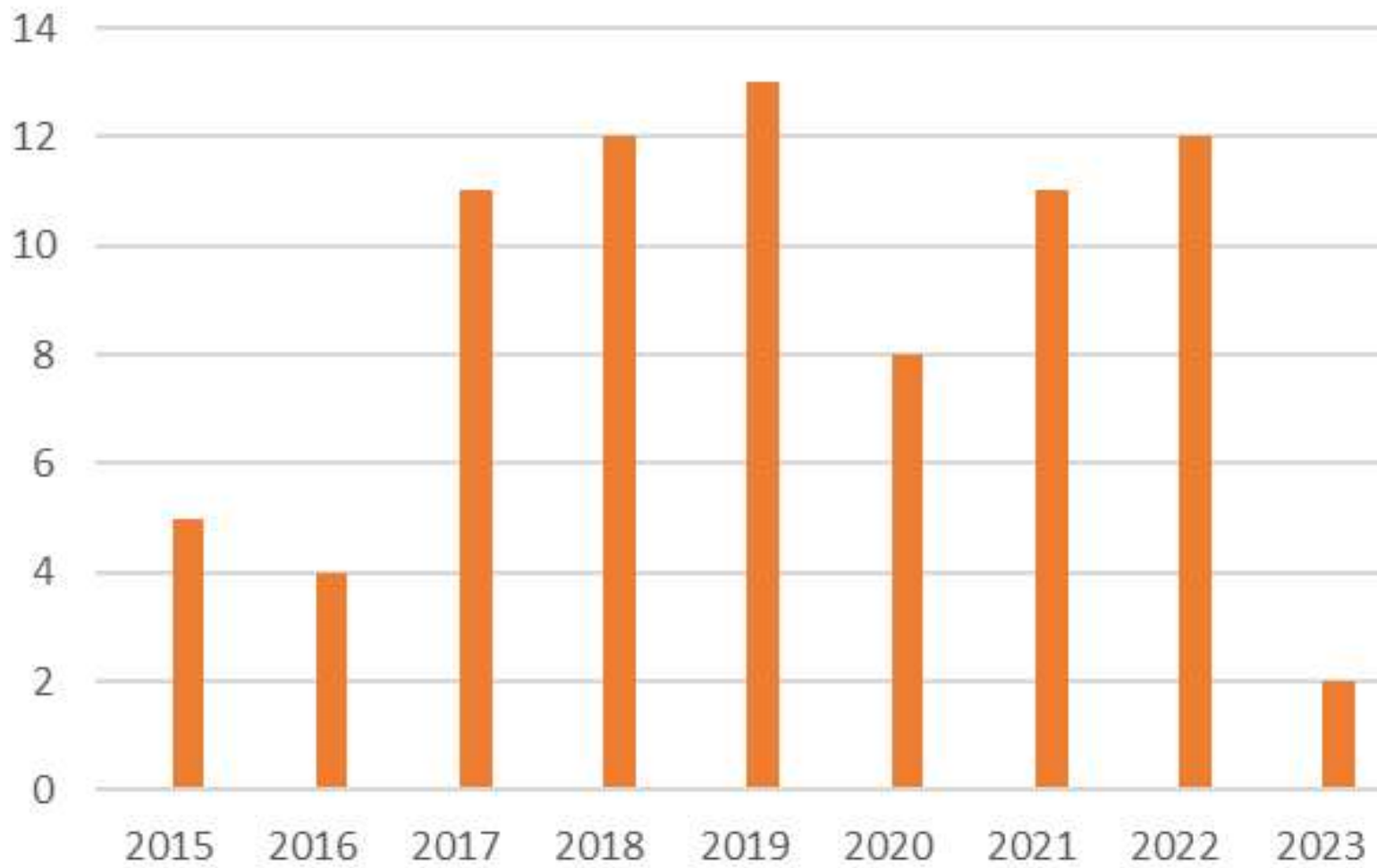
HPD Permits by Year



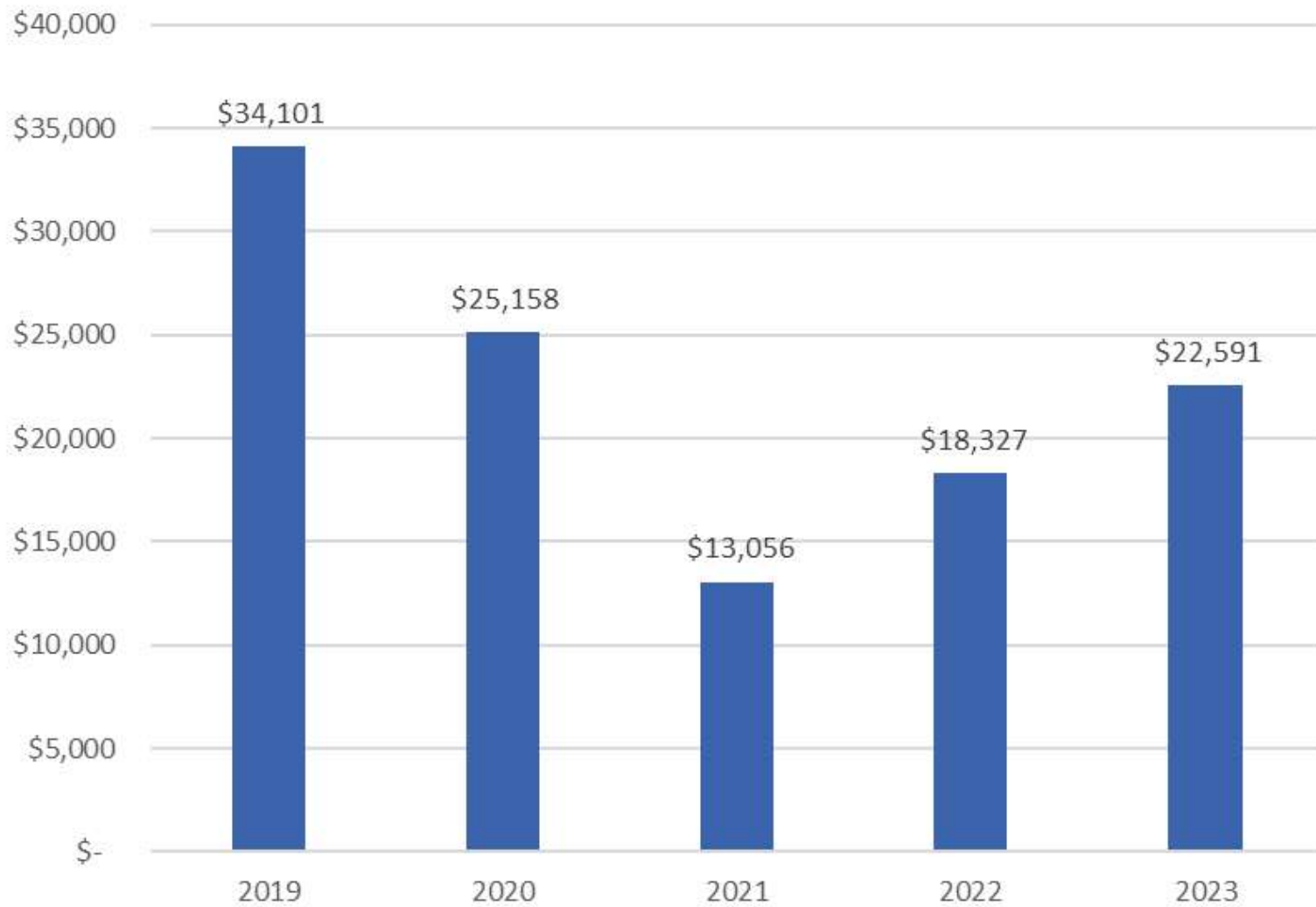
HPD Permits by Waterbody



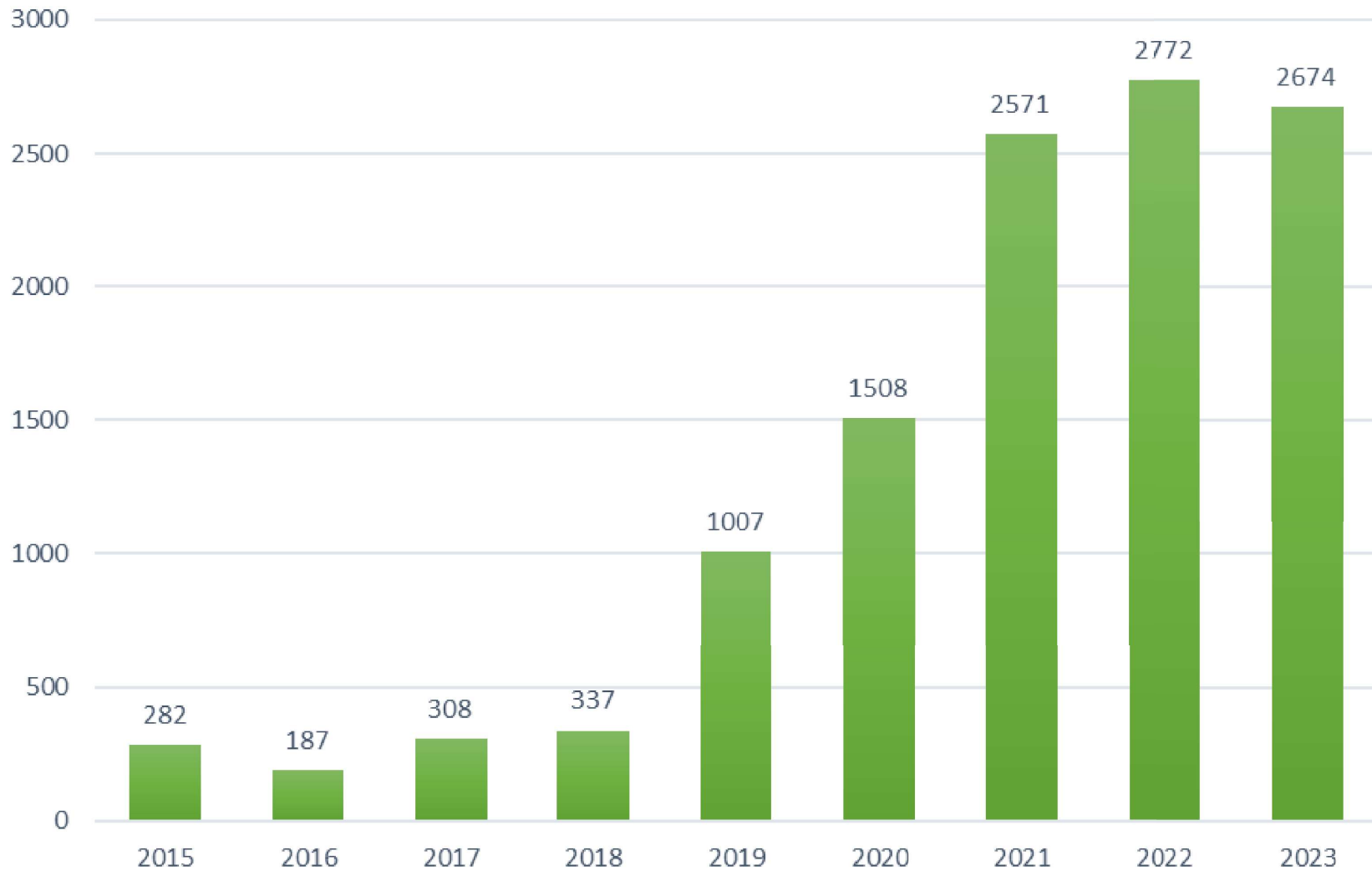
Conditional Use Permits



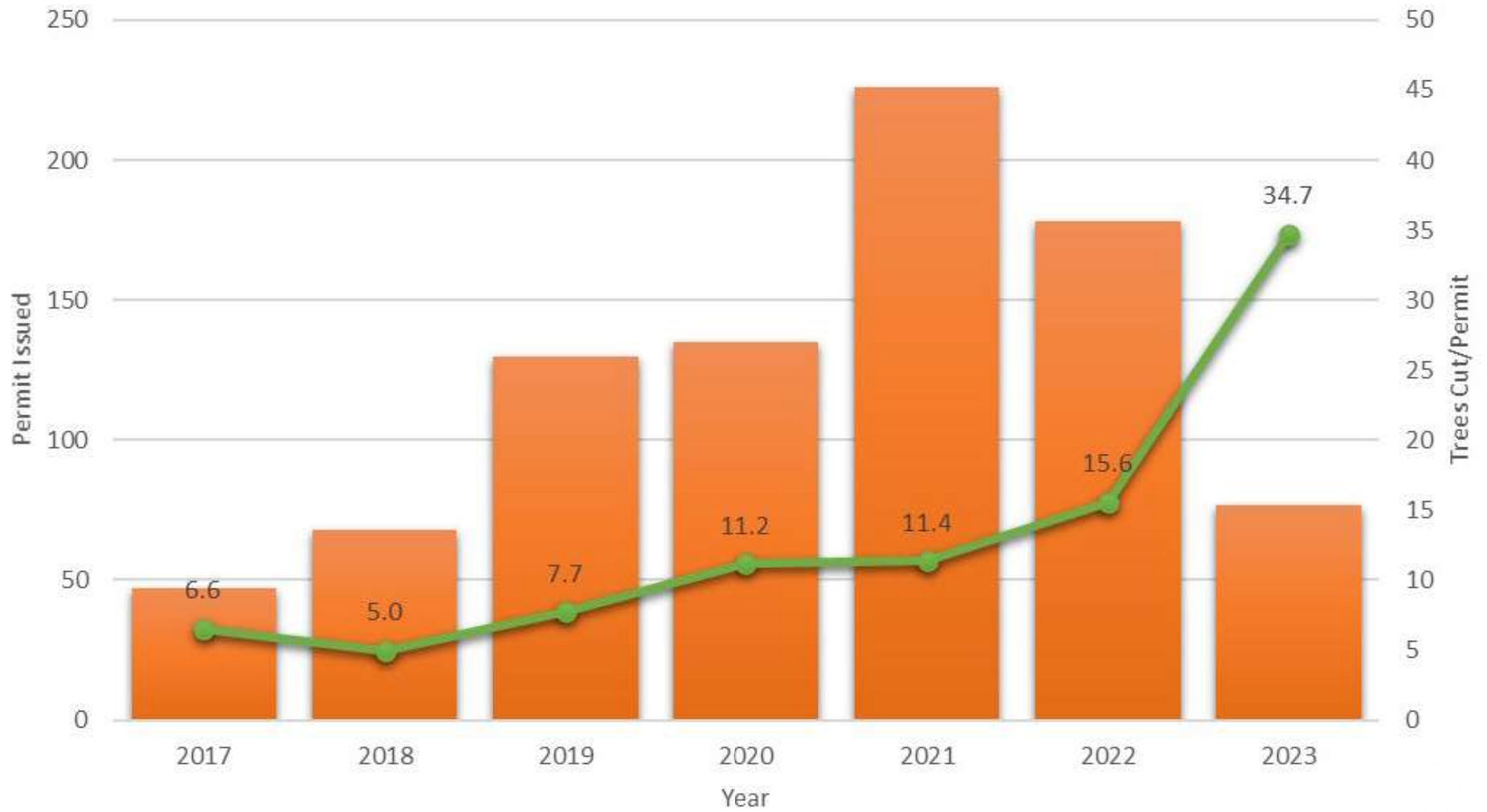
Tax Credits for Restoration Projects



Trees Removed Per Year



Minor Veg Permits/Year



LOOKING FORWARD

- Maintaining Multi-Agency Collaboration
- Spruce Bark Beetle Outbreak
 - Trees cut within 50' HPD have increased 10x
 - Public Outreach
 - Agency Coordination
 - KPB Land Management's Spruce Bark Beetle Mitigation Plan
 - OEM's Community Wildfire Protection Plan
- Address additions/deletions to the ADFG Anadromous Waters Catalog
- Habitat Conversion



HABITAT CONVERSION



Pre-1959



2022

An aerial photograph of a meandering river flowing through a lush green valley. The river winds through the landscape, reflecting the sky. In the background, a large body of water is visible, followed by a range of dark, forested mountains with patches of snow on their peaks. The sky is overcast with grey clouds.

COMMENTS/QUESTIONS