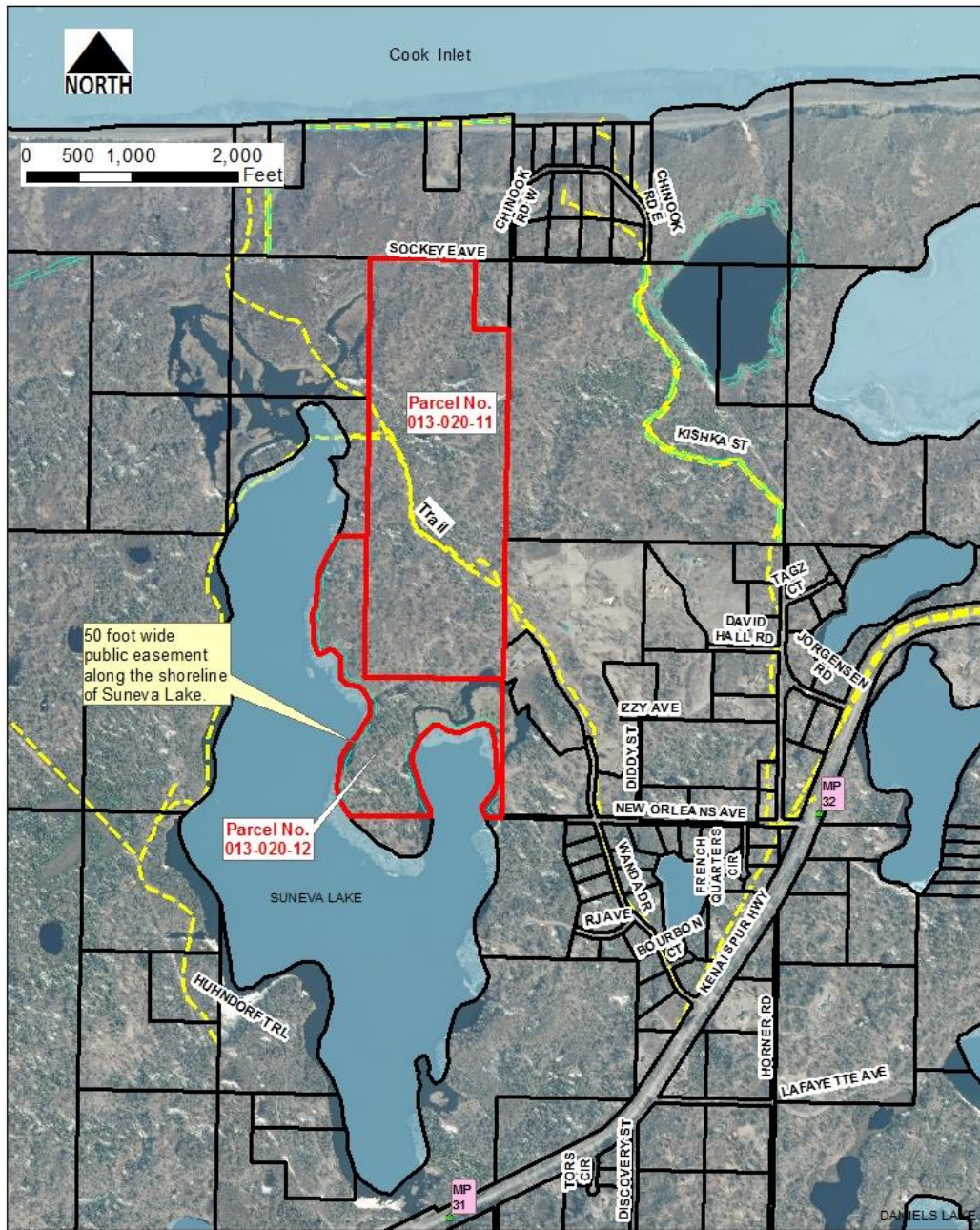
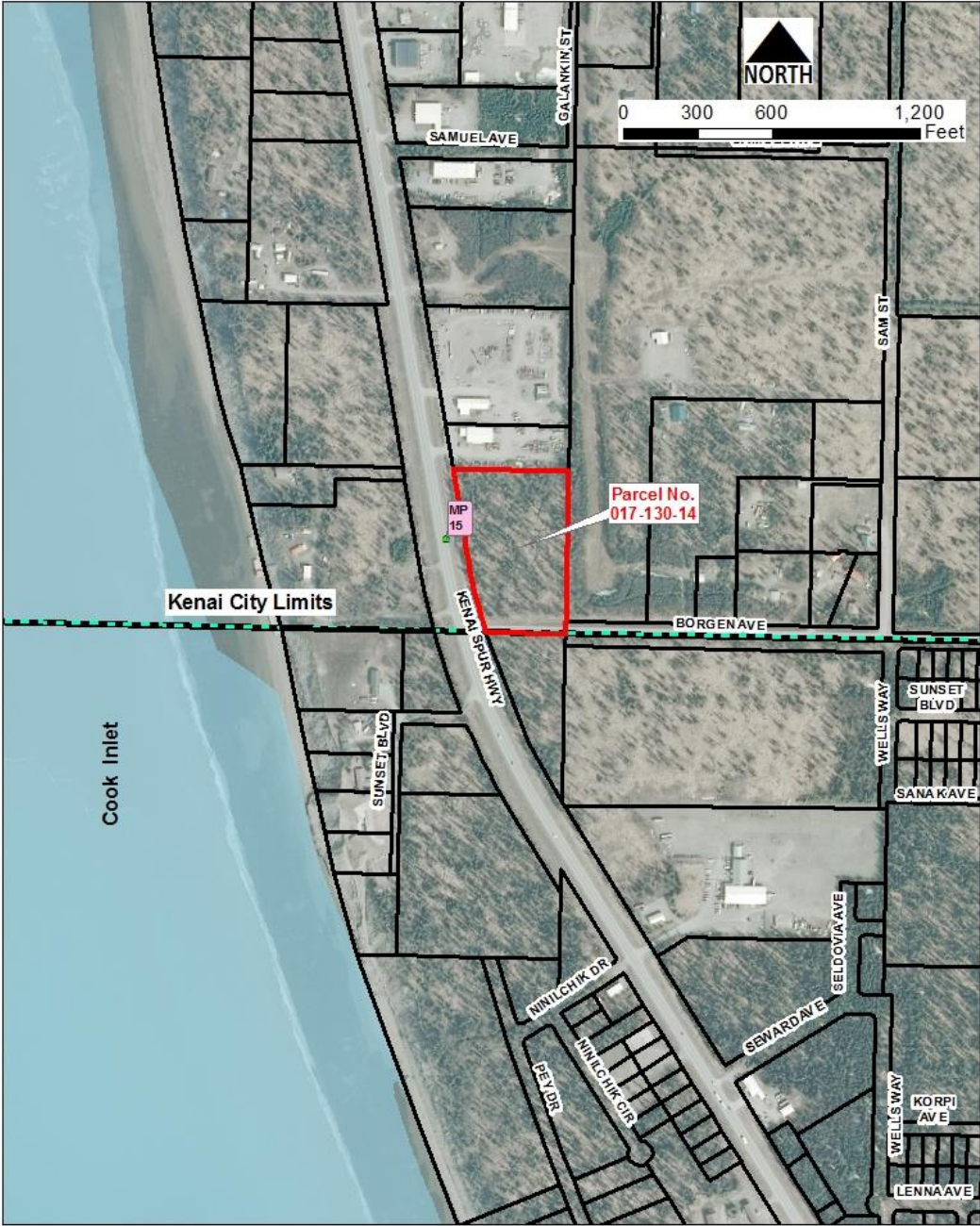


Assessor's Parcel No.	General Location	Legal Description	Acres	Classification
013-020-11	Nikiski Suneva Lake	NE¼SW¼ and SE¼NW¼ and S½NE¼NW¼ and NW¼NE¼NW¼ and W½NE¼NE¼NW¼ Section 22, T8N, R11W, Seward Meridian, Alaska	115	Rural
013-020-12	Nikiski Suneva Lake	Government Lots 2 and 3, Section 22, T8N, R11W, Seward Meridian, Alaska	59.77	Rural



Vicinity Map

Assessor's Parcel No.	General Location	Legal Description	Acres	Classification
017-130-14	North Kenai	SE¼SW¼SE¼, Section 23, T6N, R12W, Seward Meridian, Alaska, lying east of the North Kenai Road right-of-way	6.2	Commercial



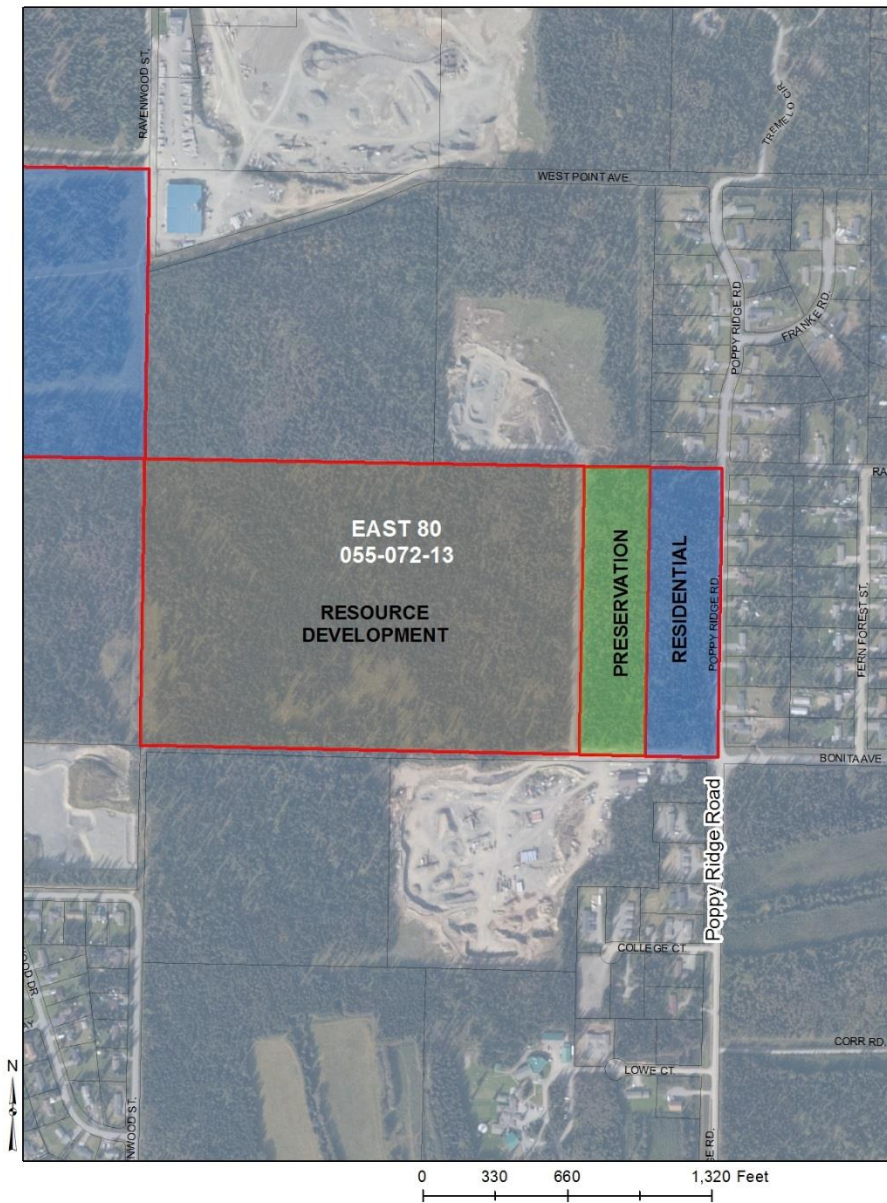
Vicinity Map

Assessor's Parcel No.	General Location	Legal Description	Acres	Classification
055-050-20	Ciechanski	Lot 4, Block 3, Ravenwood Subdivision Addition No. 1 as shown on Plat No. 72-10	0.46	Residential
055-050-22	Ciechanski	Lot 5A, Block 3, Ravenwood Subdivision Addition No. 3 as shown on Plat No. 81-42	0.46	Residential
055-050-23	Ciechanski	Lot 4A, Block 3, Ravenwood Subdivision Addition No. 3 as shown on Plat No. 81-42	0.46	Residential



Vicinity Map

Assessor's Parcel No.	General Location	Legal Description	Acres	Classification
Portion of 055-072-13 (East 80 Ac.)	Kalifornsky	S½NW¼ Section 25, T5N, R11W, Seward Meridian, Alaska	80	E1/2E1/2SE1/4NW1/4 Residential; W1/2E1/2SE1/4NW1/4 Preservation; W1/2SE1/4NW1/4 & SW1/4NW1/4 Resource Development



Assessor's Parcel No.	General Location	Legal Description	Acres	Classification
Portion of 055-072-13 (North 80 Ac.)	Kalifornsky	N½NE¼ Section 26, T5N, R11W, Seward Meridian, Alaska	80	Residential



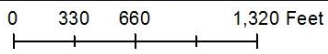
0 0.25 0.5 Miles

Assessor's Parcel No.	General Location	Legal Description	Acres	Classification
055-074-01	Kalifornsky	NW¼, Section 27, T5N, R11W, Seward Meridian, Alaska	160	Residential

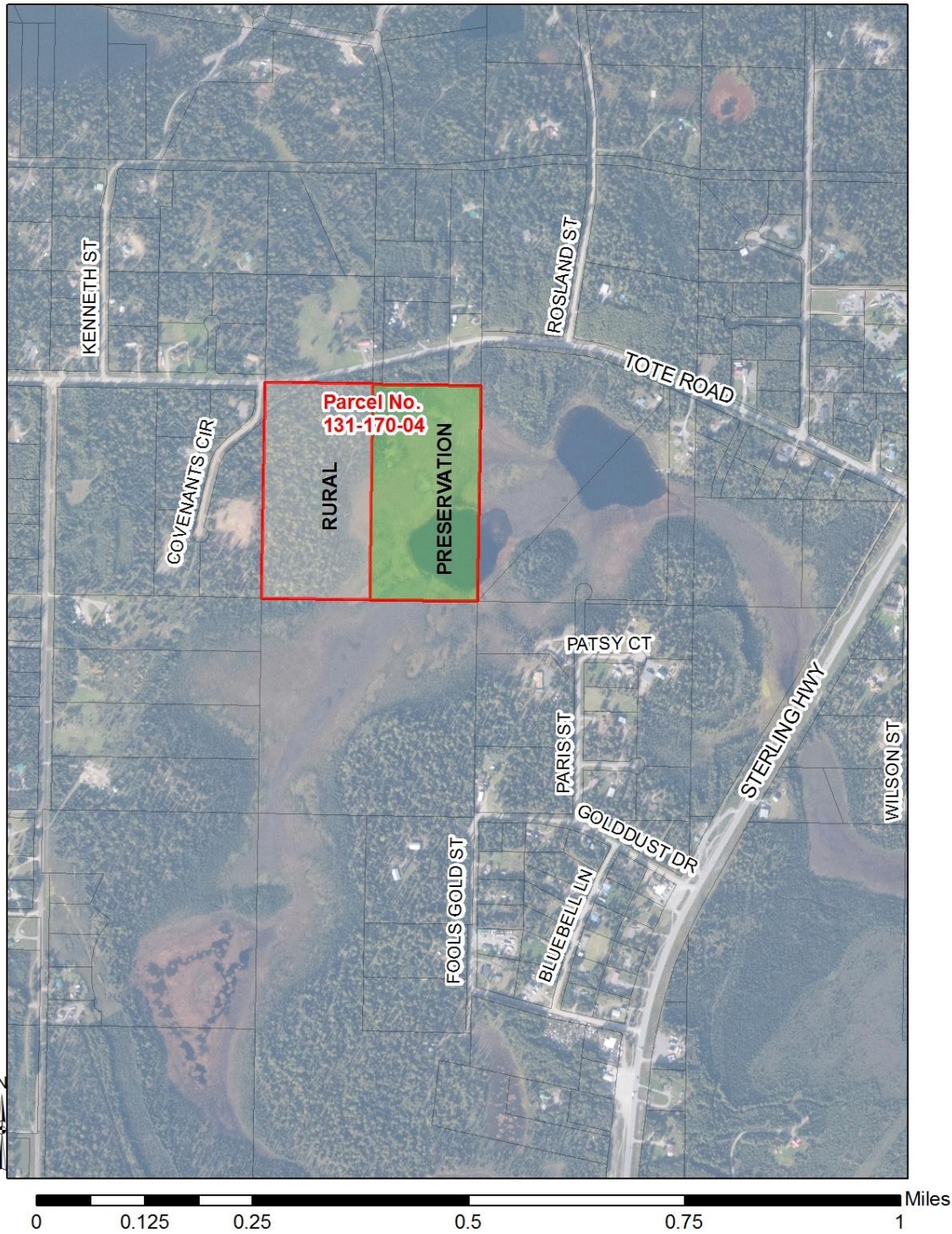


Parcel No.
055-074-01

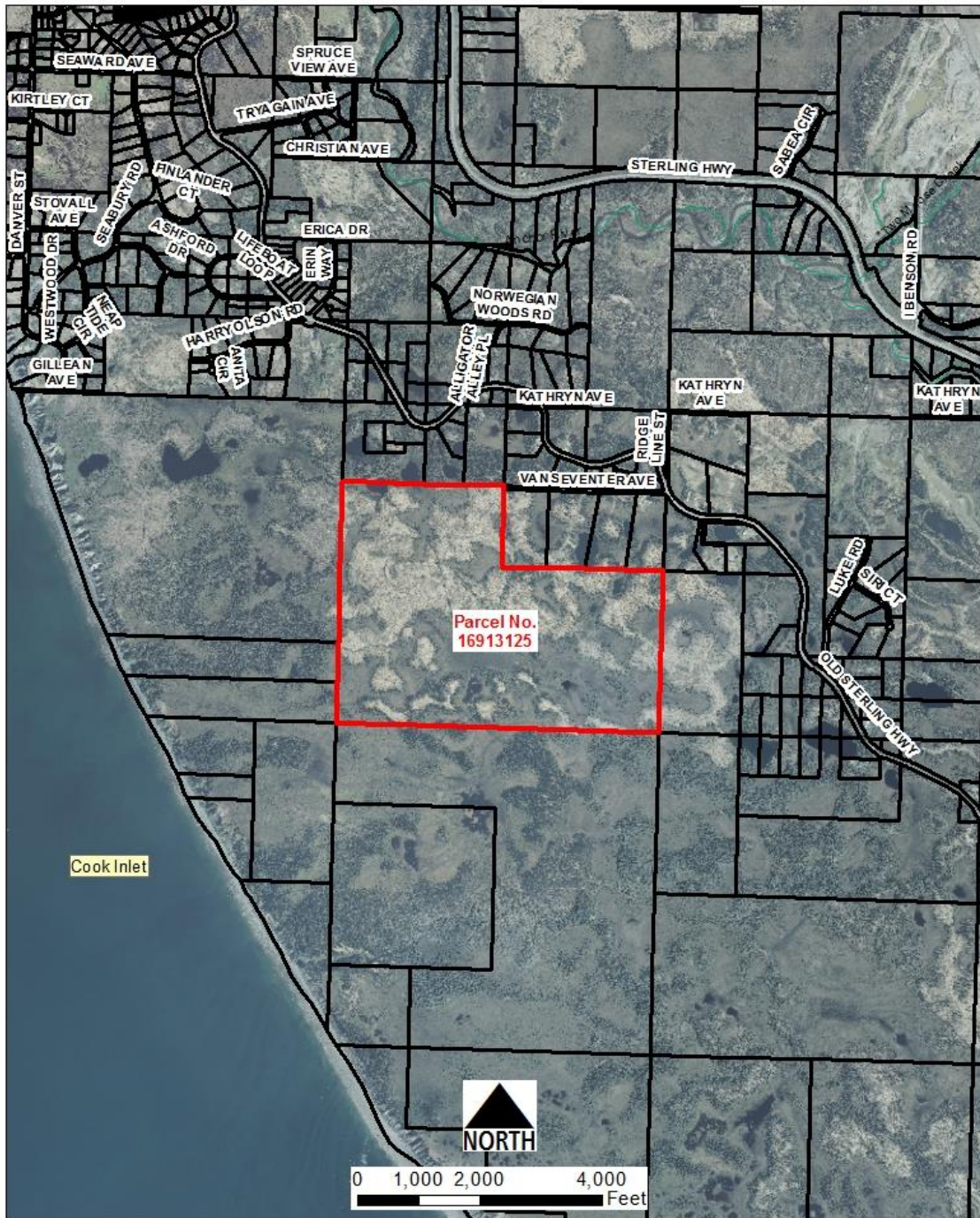
Pipeline Easement



Assessor's Parcel No.	General Location	Legal Description	Acres	Classification
131-170-04	Tote Road	NE¼NW¼, Section 27, T4N, R11W, Seward Meridian, Alaska	40	West ½ Rural & East ½ Preservation



Assessor's Parcel No.	General Location	Legal Description	Acres	Classification
169-131-25	Anchor Point	S½ and S½NW¼, Section 15, T5S, R15W, Seward Meridian, Alaska	400	Residential



Vicinity Map

Assessor's Parcel No.	General Location	Legal Description	Acres	Classification
173-021-15	Diamond Ridge	NE¼SW¼, Section 9, T6S, R14W, Seward Meridian, excluding the Sterling Highway right-of-way	38.50	Residential and Preservation



Assessor's Parcel No.	General Location	Legal Description	Acres	Classification
173-022-22	Diamond Ridge	NW¼NE¼, Section 4, T6S, R14W, Seward Meridian, Alaska	40	Residential & Recreational
173-022-23	Diamond Ridge	NE¼NE¼, Section 4, T6S, R14W, Seward Meridian, Alaska	40	Residential & Recreational
173-022-24	Diamond Ridge	SE¼NE¼, Section 4, T6S, R14W, Seward Meridian, Alaska	40	Residential & Recreational

