

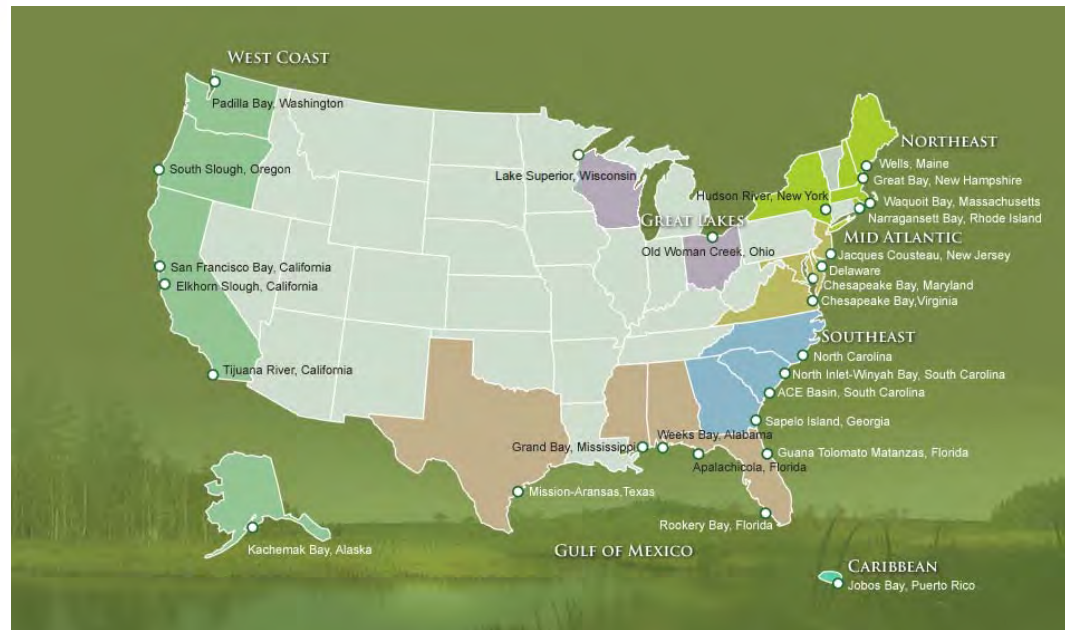
Kachemak Bay National Estuary Research Reserve

NERR Science Collaborative Grants

What is it, and how are Kenai
Peninsula Communities benefitting?



Kachemak Bay National Estuarine Research Reserve
Alaska Center for Conservation Science
UNIVERSITY of ALASKA ANCHORAGE



A national system of NERRS

Joint state and federal management

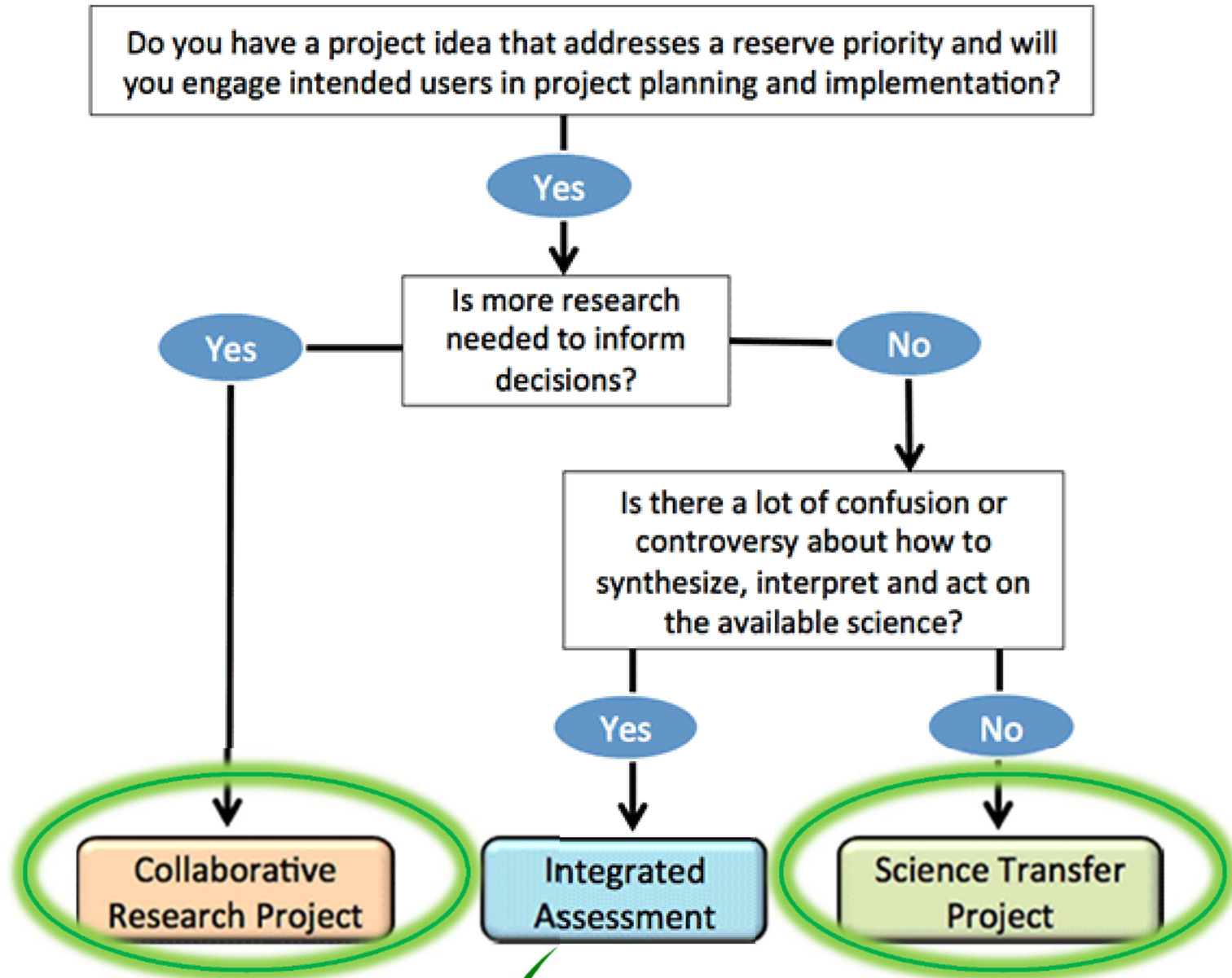
Bringing ~\$2.1 million into state annually

About the NERR Science Collaborative

Supports collaborative research that addresses coastal management problems important to the reserves

Funding for the Research Reserves and this program comes from NOAA.

Learn more at www.nerrs.noaa.gov or www.graham.umich.edu/water/nerrs.



Capacity Building – Scoping new projects ideas

Limited funding directly to reserves (non competitive) to help scope new topics and build relationships necessary for a competitive proposal.

Research Grant: Resilient Groundwater

“Collaborative Tool Development for Promoting Resilient Ground Water Resources and Holistic Watershed Management at the Kachemak Bay NERR”

~\$500,000



Partners: KBNERR Community Council, Project GRAD, Cook Inlet Keeper, Kenai Peninsula Borough Land Management, the Homer Soil and Water District, and University of South Florida

Science Transfer: Fisheries Business

*“Promoting Coastal Community Resilience through
Alaska Fisheries Business Self-Assessments”*

~\$45,000

Partners: Alaska Sea Grant, Alaska Marine Conservation Council

- Tailor business self assessment developed for fisheries by the Mississippi-Alabama Sea Grant Consortium
- Network of partners including fishery industry leaders, resource managers, business owners and resilience experts
- Business resilience workshops using the updated Alaska Fisheries Resilience Index



Science Transfer: Blue Carbon

“Assessing Kachemak Bay’s Blue Carbon Resources and Increasing Community Awareness and Commitment to Preserving Wetland Ecosystem Services”

~\$100,000

Partners: Waquoit Bay NERR, Smithsonian Environmental Research Center

- Developing community awareness and communication resources and tools for managers, policy makers and other audiences around blue carbon;
- Research plan for evaluation of wetland ecosystem service studies and blue carbon valuation

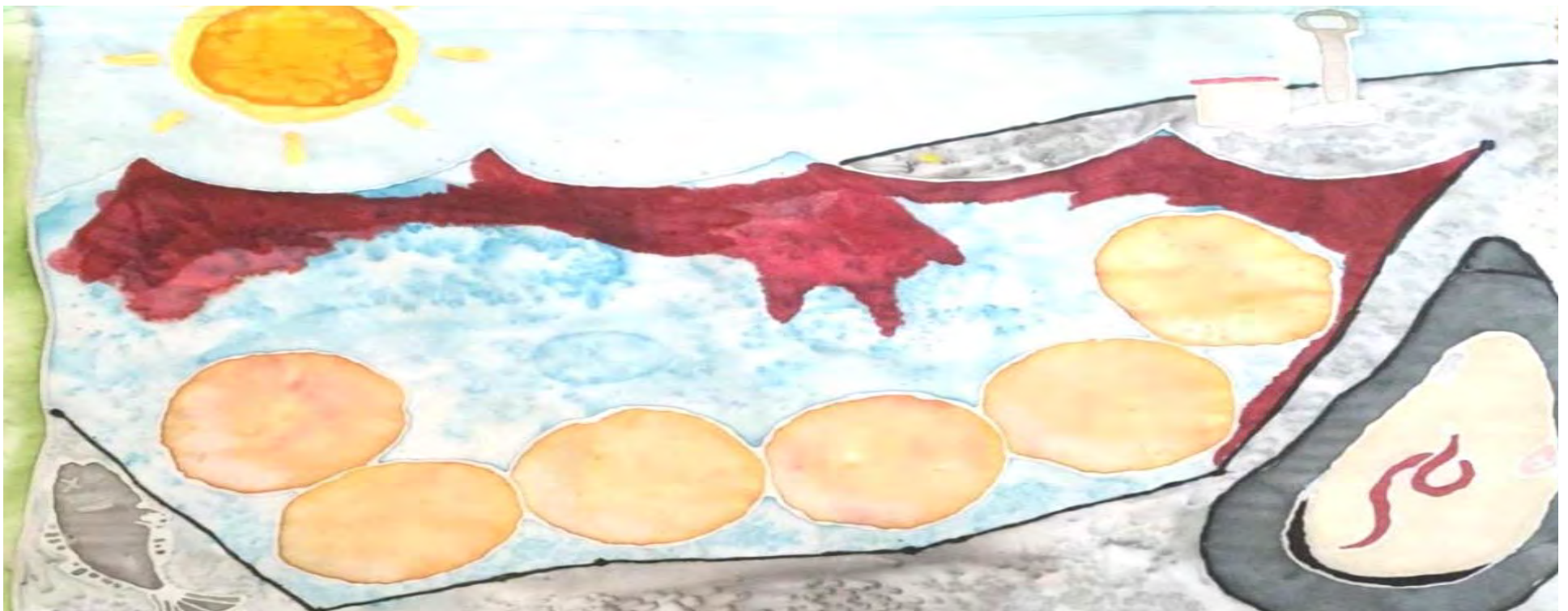


Science Transfer: Climate Resilience

*“Overcoming Uncertainty with Climate Scenario Planning:
Enhancing Coastal Community Resilience on the Kenai Peninsula”*

Partners: Tijuana River NERR, Susanne Moser Research and Consulting

- Building capacity to understand and respond to climate scenarios;
- Indicators and metrics for adaptation strategies in planning



Capacity Building: Storm Berm

“Storm Berm Protection and Enjoyment - Creating a Shared Vision”

~\$10,000

- Develop situational assessment of the various uses and pressures impacting these storm berms
- Convene area stakeholders (i.e. landowners, natural resource scientists and managers, recreationists, local businesses, and environmental educators) to develop consensus on actions to preserve ecosystem services



Enjoy National Estuaries Week!

