



The Economic Contributions of Bear Viewing in Southcentral Alaska

presented by

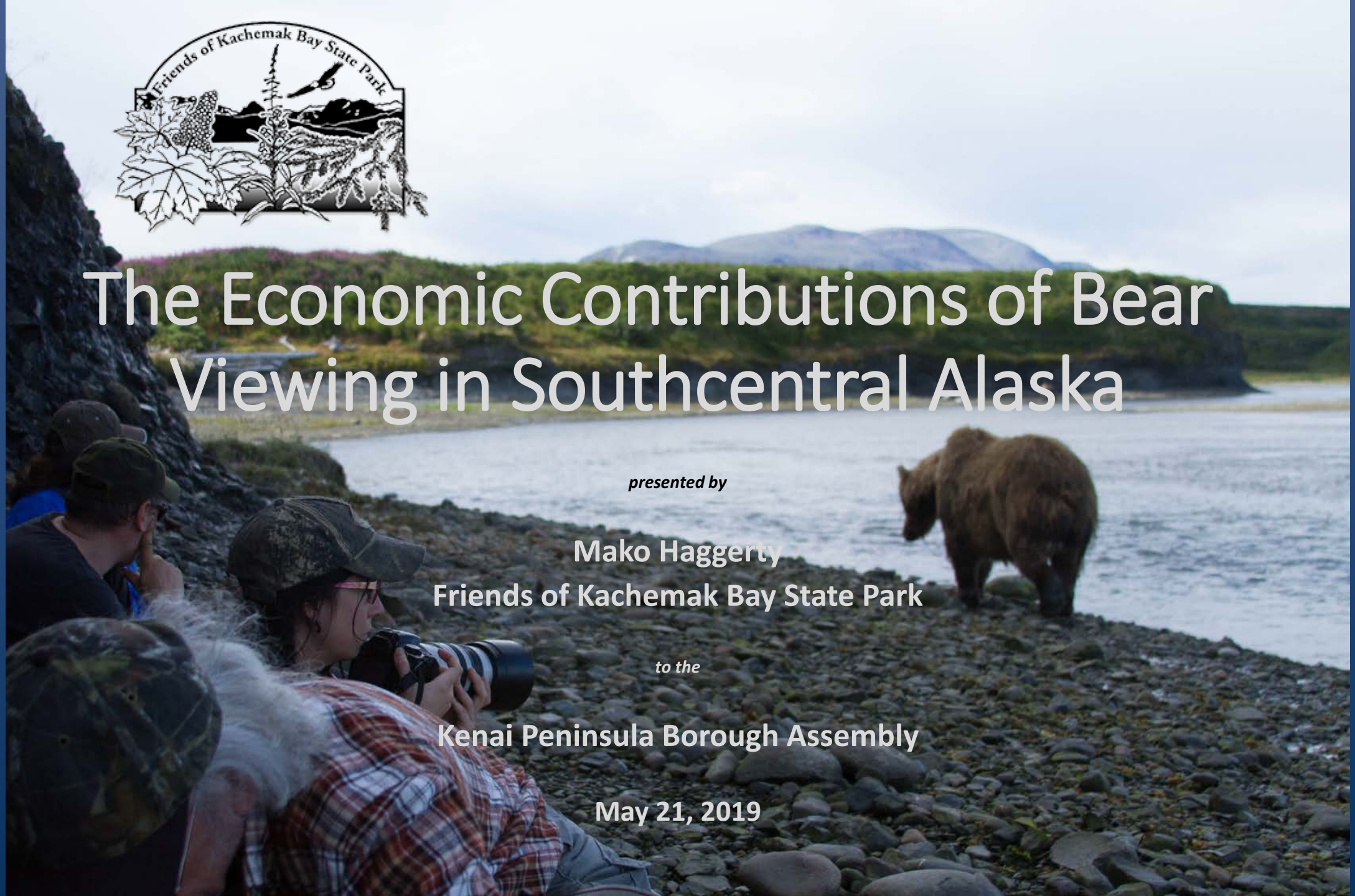
Mako Haggerty

Friends of Kachemak Bay State Park

to the

Kenai Peninsula Borough Assembly

May 21, 2019

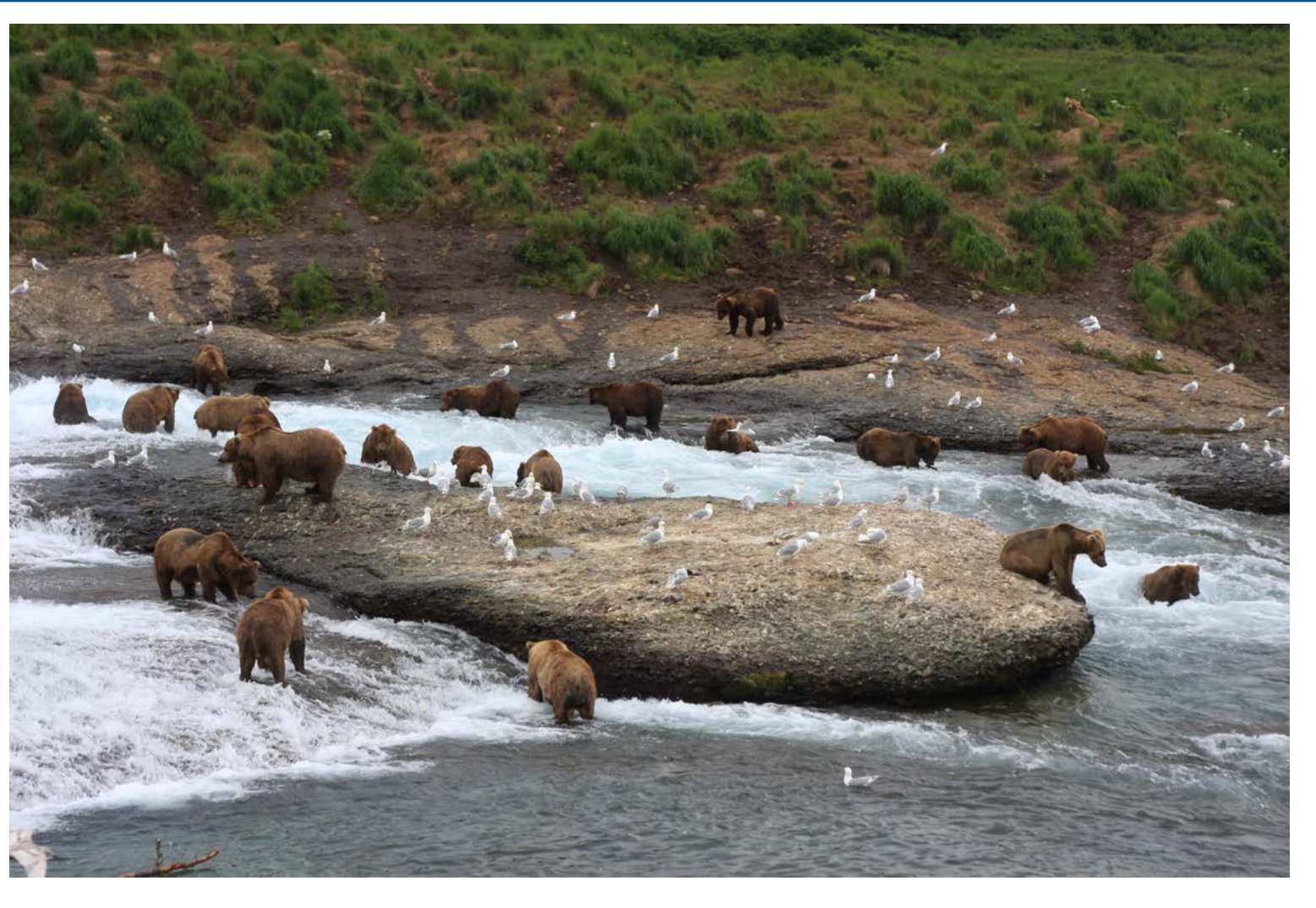




Formed in 1999 to promote the enhancement, preservation and protection of the natural recreational, scientific and historical resources of Kachemak Bay State Park.



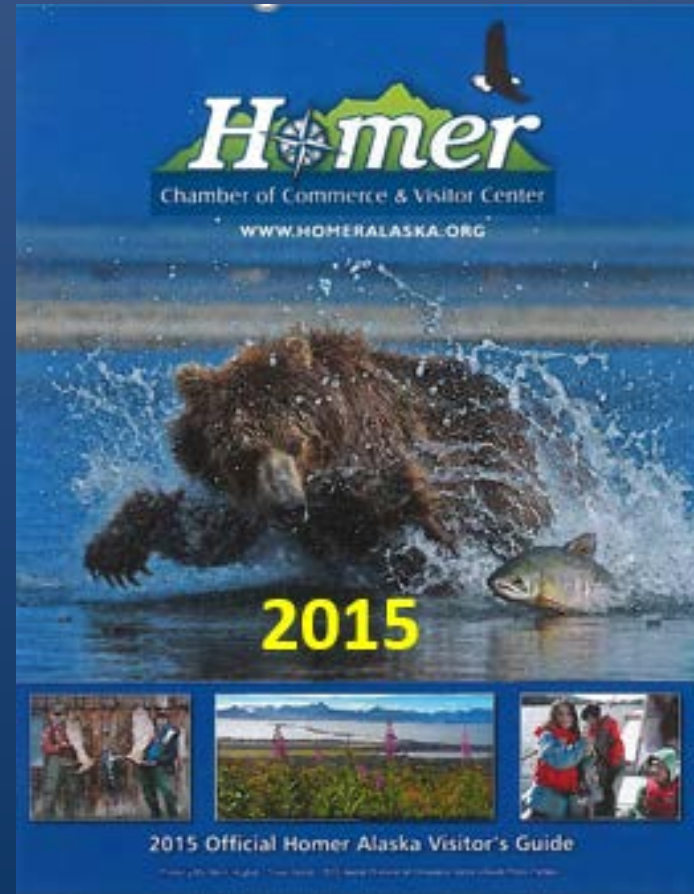
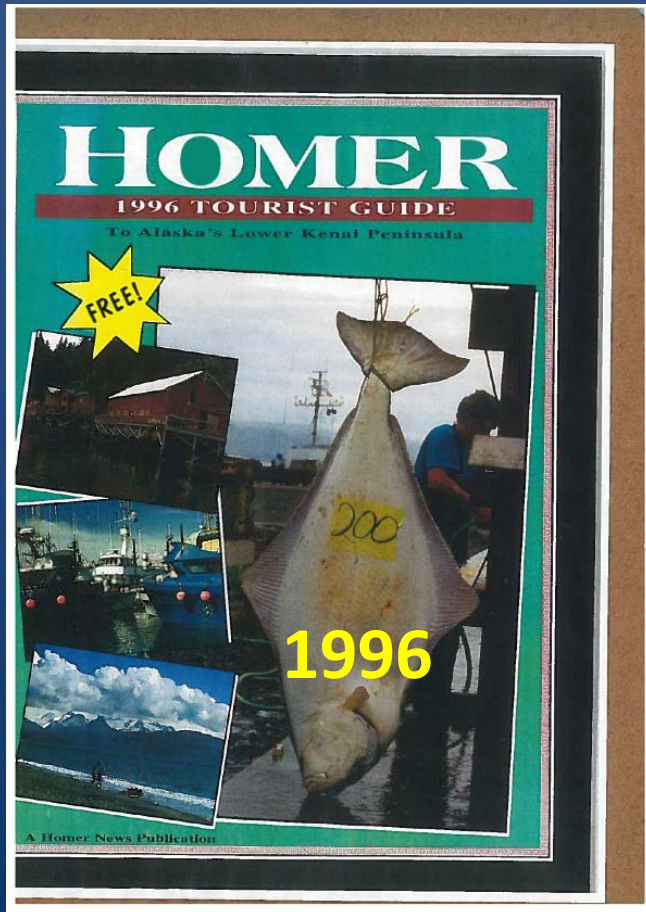
Lower Cook Inlet boasts the highest concentration of brown bears in the world



Lower Cook Inlet: The Bear Viewing Capital of the World



Tourism continues to grow & bear-viewing is a huge growth sector



Bear Viewing is Big Business



New Study: “The Economic Contributions of Bear Viewing in Southcentral Alaska”

- UAF School of Management
- Previous studies of Katmai & Lake Clark National Parks & McNeil River State Wildlife Sanctuary
- New data from surveys from bear viewing service providers



KEY FINDINGS: Bear Viewing Service Providers collect \$ 34.5 million in direct sales annually (2017)

- Air/boat taxis
- Guides
- Lodging
- Food



KEY FINDINGS: Bear Viewing Service Providers Drive
Over \$36 million into our Local Economies Annually



KEY FINDINGS: Bear Viewing Supports More Than \$17 million in Jobs Income, including \$10 million in Direct Wages & Benefits



KEY FINDINGS: Bear Viewing Supports 490 Jobs in the Region, Including over 370 Direct Jobs

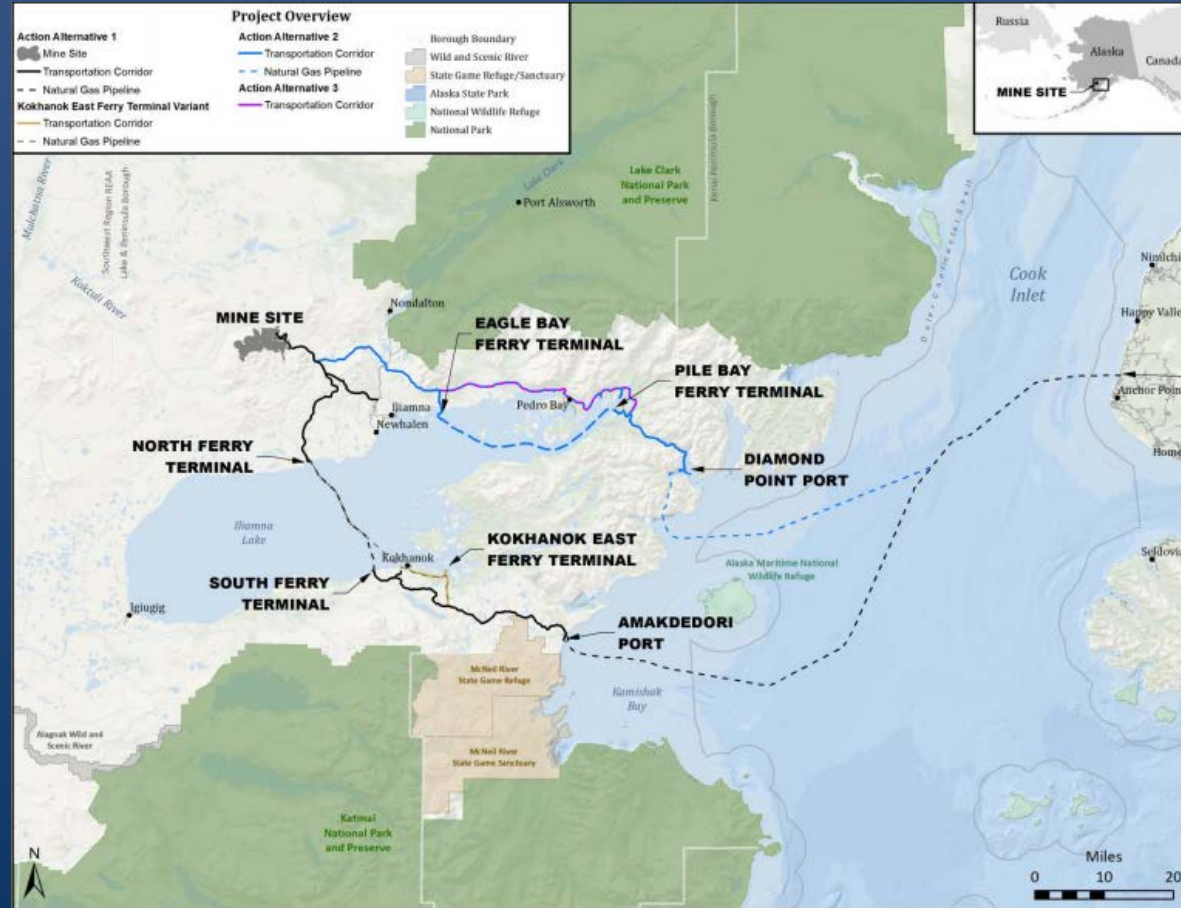


Recap: Key Findings – Bear Viewing Industry Supports:

- Over \$34 Million in Direct Sales (and growing)
- Over \$36 Million in Economic Value
- More than \$17 Million in Jobs
- 490 Jobs rely on Bear Viewing



The Pebble DEIS Does Not Address Bear Viewing Industry



Thank you!

