

Central Emergency Services



FY2025 Proposed Budget

Operations Pages 189-201

Capital Projects Pages 359

Central Emergency Services

OUR MISSION

“Central Emergency Services is dedicated to protecting the lives and property of our community and visitors by providing professional emergency services through incident response, training, public education and fire prevention”

OUR VALUES

TEAMWORK



INTEGRITY



DEDICATION



PRIDE





1991 - Established the Central Emergency Service Area-by consolidation of the City of Soldotna, Ridgeway/Sterling, K-Beach Borough Fire Departments and Central Peninsula EMS.

In 2004 areas of Kasilof and Funny River were added.



CES Service Area: Population 24,143

Fire & EMS-1,000 Sq.Mi., EMS Only-1,200 Sq. Mi.

3,044 Emergency Incidents (FY23)

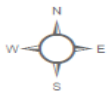
Mill Rate: 3.21



Central Emergency Services (CES)

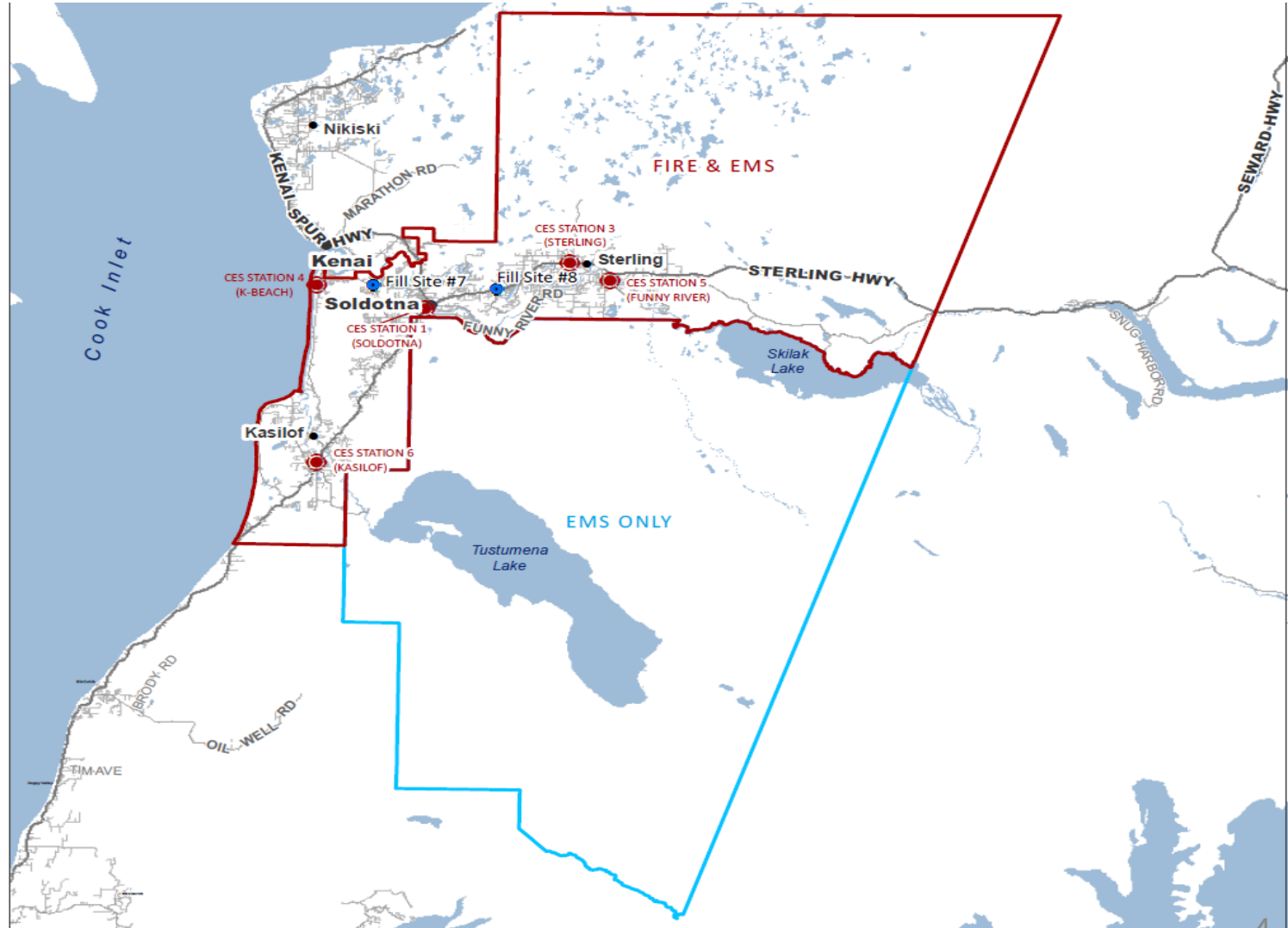
Map Date: 9/19/18

- Fill Sites
- Fire Stations
- State Highway
- Major Road
- Minor Road
- Water



0 2 4 Miles

The information depicted hereon is for a graphical representation only of best available sources. The Kenai Peninsula Borough assumes no responsibility for any errors on this map



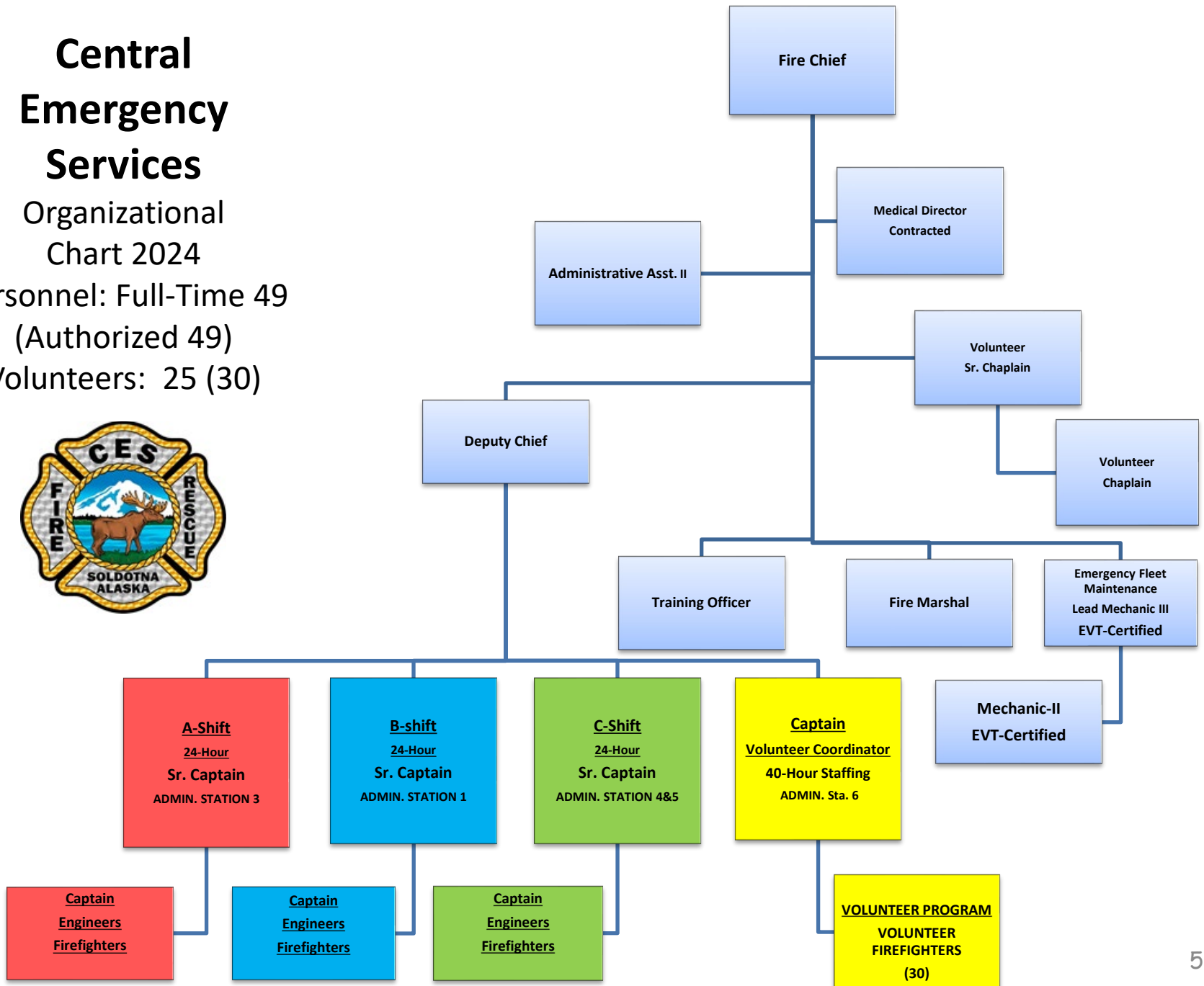
Central Emergency Services

Organizational
Chart 2024

Personnel: Full-Time 49

(Authorized 49)

Volunteers: 25 (30)



FY2024 Key Accomplishments

- Completed Design & Engineering plans for construction of the new Soldotna Fire Station. Ready for Invitation to Bid.
- Hired second fleet mechanic, decreasing out-of-service time
- 27 Mobile Radios purchased for all emergency vehicles, installation in progress
- Arc Loop Training Site security gates and fencing completed.
- Youth Fire Explorer Program

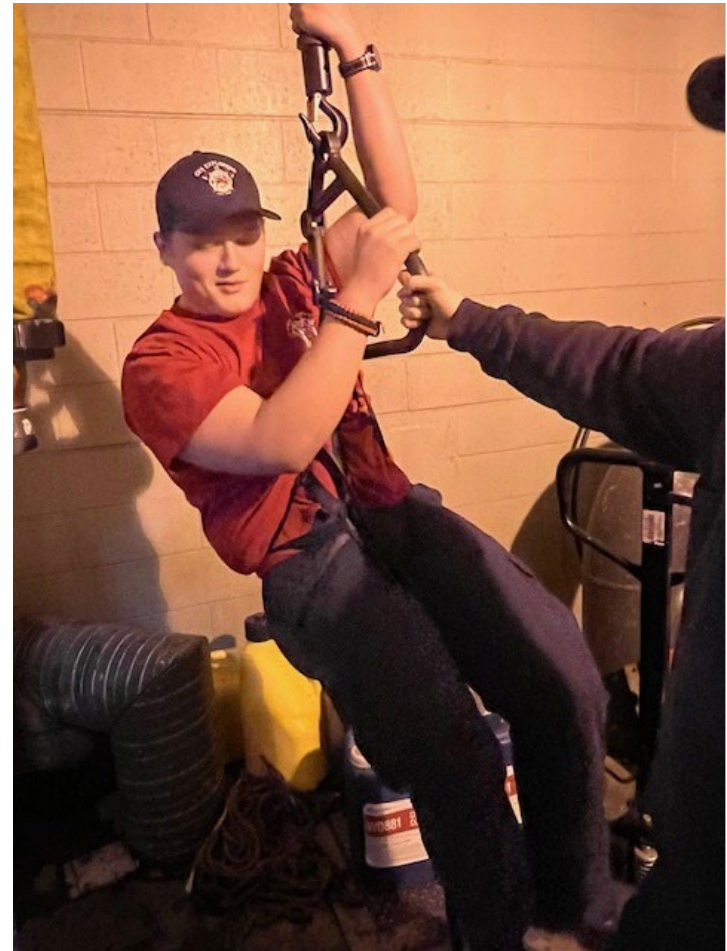


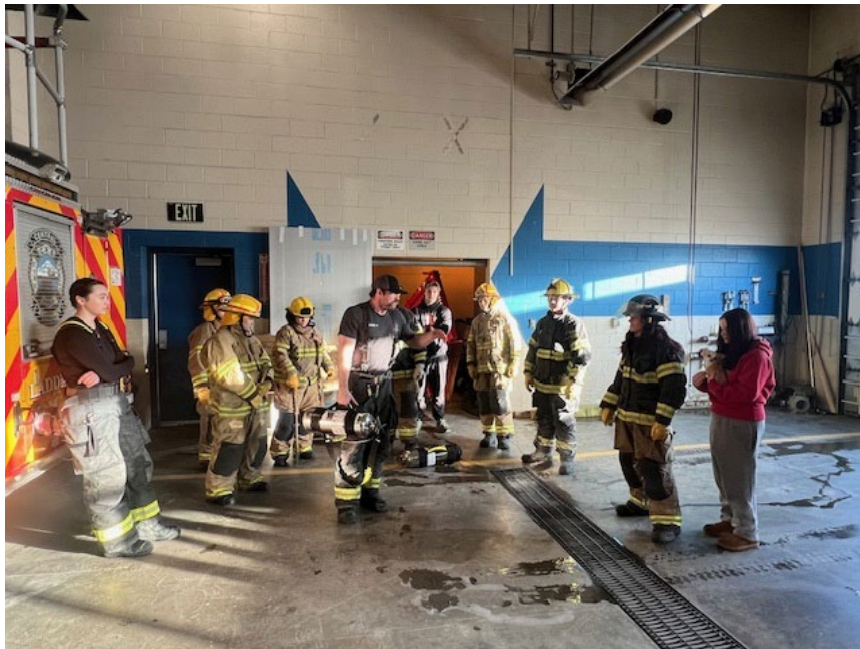
CES Fire Explorer Program



Fire Explorer Program

- Youth Program: Ages 14-18
- Sponsored by Boy Scouts of America (Both Boys & Girls)
- 15 currently in the program
- Thursday-dedicated Meeting/Training night, year round





FY2025 Objectives and Budget Highlights

- Break ground on construction of the new Soldotna Fire Station. This will improve emergency response capability and reduce costs by operating a multipurpose headquarters fire station.
- Implementation of new Personnel Scheduling software
\$11,700
- Improvements to fire station water systems by installing filter systems and water softeners
\$12,000
- K-Beach Station Leach field replacement
\$16,000



Expenditure Summary

	FY2024 Original Budget	FY2025 Proposed Budget	Change
Personnel	\$ 8,950,927	\$9,236,569	\$285,642
Supplies	521,698	546,712	25,014
Services	1,413,325	1,495,905	82,580
Capital Outlay	220,640	219,606	(1,034)
Transfers	2,484,003	2,583,332	99,329
Interdepart'l Charges	277,665	287,470	9,805
Total	13,868,258	14,369,594	501,336
Change			3.61%

Capital Improvement Project

FY25

Tanker Replacement 922

Sterling-FS#3

\$1,100,000



Scheduled replacement for the Sterling Station. Replaces tanker with design deficiencies in steel water tank and pump plumbing, including rust and electrolysis

Long Term Issues and Concerns

- Staffing Kasilof Fire Station Full-Time, providing the Kasilof residents the same staffing as the communities of Sterling, K-Beach and Funny River.
- Meeting the needs of training, staffing and succession planning
- Reinstate 2nd Administrative Assistant
- Recruiting & Retention

