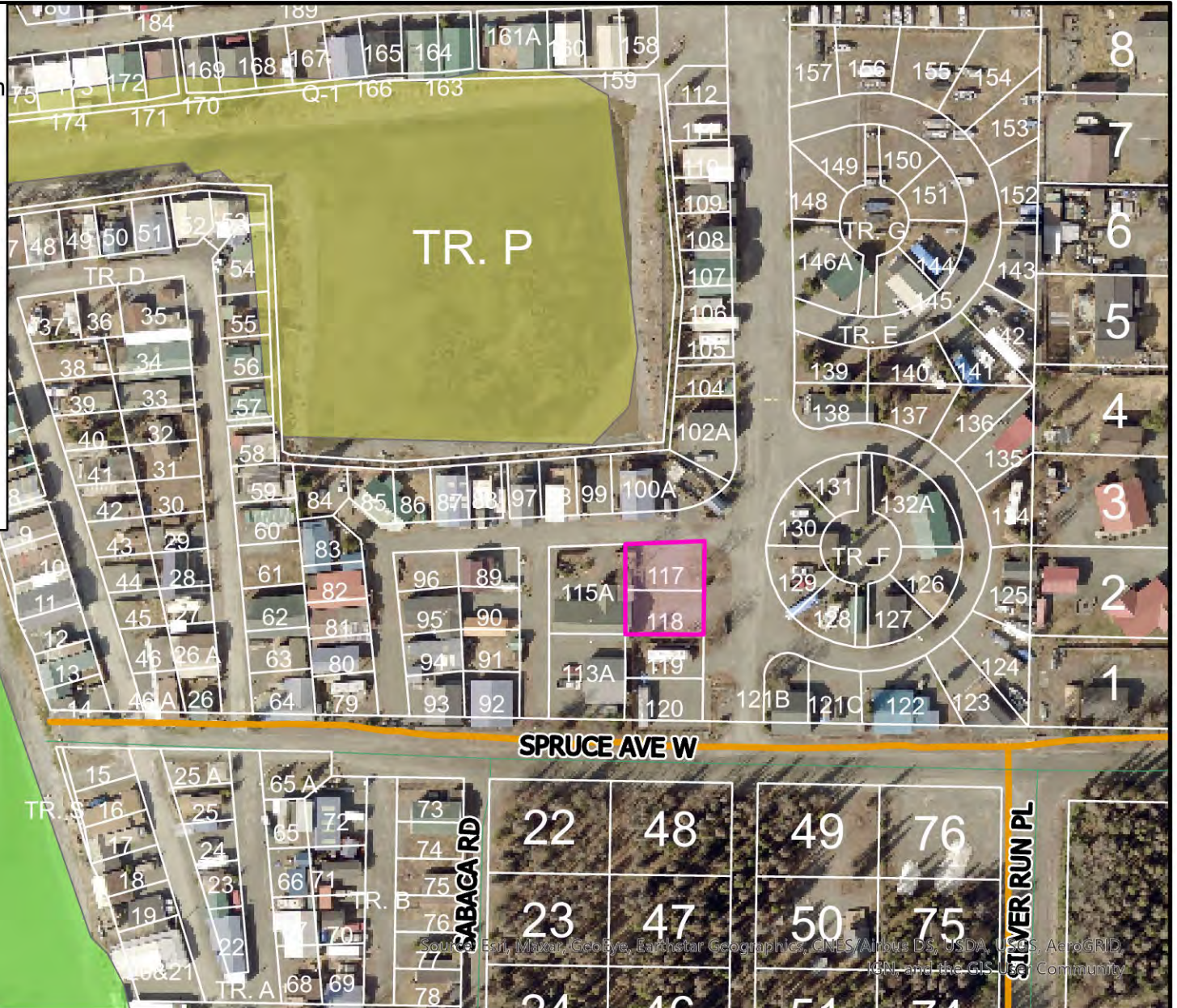
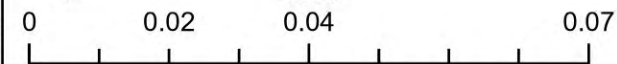


**Legend**

- PRELIMINARY PLATS
- WETLANDS Kenai Watershed Forum**
- ECOSYSTEM**
- DISTURB
- Depression
- Discharge Slope
- Drainageway
- Floating Island
- Headwater Fen
- Kettle
- LAKE
- Lakebed
- Late Snow Plateau
- Riverine
- Tidal
- Wetland / Upland Complex
- <all other values>
- BOROUGH MAINTAINED ROADS



The information depicted hereon is for a graphical representation only of best available sources. The Kenai Peninsula Borough assumes no responsibility for any errors on this map.



AERIAL IMAGERY 2021

WETLANDS

Scott Huff  
 Platting Manager  
 Current Time:  
 1/27/2022 9:38 AM

Source: Esri, Maxar, GeoEye, Earthstar Geographics, CNES/Airbus DS, USDA, AeroGRID, IGN, and the GIS User Community