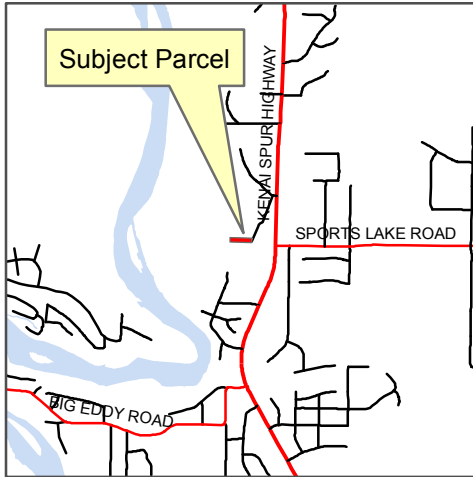



Kenai Peninsula Borough Planning Commission Meeting, January 8, 2018
Assembly Meeting, January 16, 2018
Recommendation on State Application for Marijuana Establishment License

KPB Parcel ID: 057-660-01
Applicant: Pinnacle Projects



LEGEND

 Subject Property

Radius shown depicts the radius from the parcel boundaries. KPB 7.30 states that the distance must be measured by the shortest pedestrian route. If there were relevant facilities within the 500-foot or 1,000-foot radius, the shortest pedestrian path would be shown and measured.

0 125 250 Feet



Date: 12/12/2017

The information depicted hereon is a graphical representation only of best available sources. The Kenai Peninsula Borough assumes no responsibility for any errors on this map.



Aerial Map