

FY2026 Proposed Budget

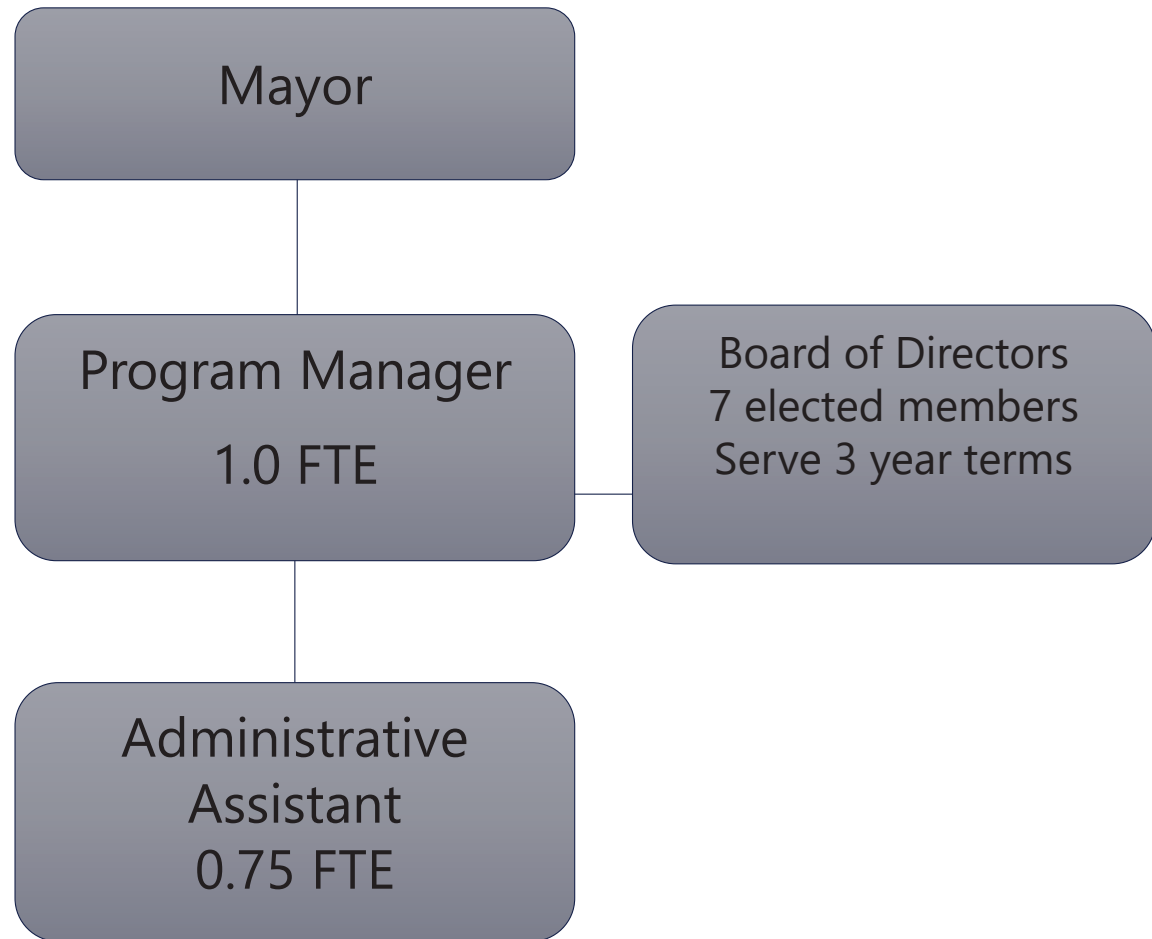
Nicholas Chapman
Program Manager, SBCFSA



Background information

- The mission of the Seward Bear Creek Flood Service Area is to provide flood planning, protection, and mitigation services in the community of Seward, Bear Creek & Lowell Point, in coordination with the appropriate agencies, to reduce the risk of flood damage to private and public property, through addressing issues that best reflect a fair use of the tax-levy for watershed-wide benefit.

Organizational chart





FY25 Key Accomplishments



- Worked in partnership with Trout Unlimited, US Fish and Wildlife, City of Seward, and the Kachemak Heritage Land Trust on fish culvert design and placement using grant funds.
- Worked in partnership with the City of Seward and Bell Engineering to develop design plans and revetment drawings for channelization and bank enforcement of the Scheffler Creek drainage.
- Procured drone equipment to save time and money on mitigation project quality control and to be able to survey the service area in a timelier manner.
- Continued work in an advisory capacity with the Alaska Railroad to remove approximately 40,000 cubic yards (CY's) of unclassified excavation from Japanese Creek.
- Contracted and managed projects that removed 46,000 CY's of sediment from the Salmon Creek drainage.
- Completed emerging situation repairs to address rapidly eroding embankments at Kwechak, Japanese, Salmon, and Box Cannon Creeks.



FY26 Objectives & BUDGET HIGHLIGHTS



- Continue partnership with US Fish & Wildlife Service, State of Alaska Fish & Game, Kachemak Heritage Land Trust, and other local stakeholders on fish culvert design and placement using grant funds.
- Continue to work in partnership with the City of Seward to find a solution to the Scheffler Creek drainage using the design plan created in FY2025 to create a framework for construction on the project in starting in FY2027.
- New design plans for Lost Creek extending the mitigation area down to the highway crossing.
- Partner with Land Management on material storage and a Rip Rap source.

Expenditure Summary – SBCFSA

	FY25 Original Budget	FY26 Mayor Proposed Budget	Difference Between Proposed & Original Budget
Expenditures			
Personnel	\$ 270,380	\$ 264,802	\$ (5,578)
Supplies	6,100	6,250	150
Services	376,043	390,490	14,447
Interdepartmental Charges	21,438	(24,727)	(46,165)
Total	\$ 673,961	\$ 636,815	\$ (37,146)
Change			5.51%

Significant Budgetary Items

An aerial photograph showing a large-scale sediment removal project on a river. A yellow excavator is positioned in the river, dumping sediment into a red dump truck. The river is filled with grey sediment, and the surrounding area is covered in evergreen trees. In the background, snow-capped mountains are visible under a clear sky.

FY25/FY26 Project that removes 93,300 CY's of sediment from Upper Kwechak Creek

Blasting and sorting rock for future Revetments

New site plans for an expanded Lost Creek mitigation site

Interdepartmental charges for assisting the Road service area



Nicholas
Chapman

nchapman@kpb.us

(907)-224-3340

<https://www.kpb.us/community-services/emergency-preparedness/sbcfsa>

Long-Term Challenges

Replacing diversion berms with Rip Rap revetments.

