

**KENAI PENINSULA BOROUGH
PROPOSITION NO. 1 - WESTERN EMERGENCY SERVICE AREA**

**EXPANDING THE ANCHOR POINT FIRE AND EMERGENCY MEDICAL SERVICE AREA
BOUNDARIES TO INCLUDE THE NINILCHIK AREA AND CREATING THE WESTERN EMERGENCY
SERVICE AREA**

(To be voted on by voters in the proposed boundaries of the Western Emergency Service Area)

On July 7, 2020, the Assembly enacted Ordinance 2020-31, "An Ordinance Expanding the Anchor Point Fire and Emergency Medical Service Area Boundaries to Include the Ninilchik Area", subject to voter approval.

BACKGROUND:

Some members of the neighboring communities of Ninilchik and Anchor Point expressed a desire to the assembly for consistent and dependable fire and emergency medical services. Both communities have been satisfied with their level of services in the past, but firefighters and emergency medical service (EMS) personnel have described deficiencies that they believe can only be remedied with additional staffing.

A working group was appointed by Mayor Pierce and approved by the KPB Assembly to hold public meetings, discuss the possibility of forming a joint Ninilchik-Anchor Point service area, and make recommendations to the Assembly. The Working Group found:

- Fewer volunteers are offering to serve on both Ninilchik and Anchor Point teams.
- A joint service area would be more efficient than separate service areas.
- A stand-alone service area for Ninilchik would necessitate a mill rate of 5.75 to support satisfactory services.
- A joint service area would significantly reduce the cost of ambulance runs for Ninilchik residents.
- A joint service area with a mill rate of 2.95 would provide for ten full time employees, a sustainable fund balance, and a reasonable capital outlay plan.
- A stand-alone staffing increase for Anchor Point which has been requested for some time, would result in a higher mill rate than 2.95 mills.
- A joint service area mill rate of 2.95 would increase staffing at both Ninilchik and at Anchor Point fire stations, but would not be sufficient for full time staffing at either station.

FISCAL NOTE:

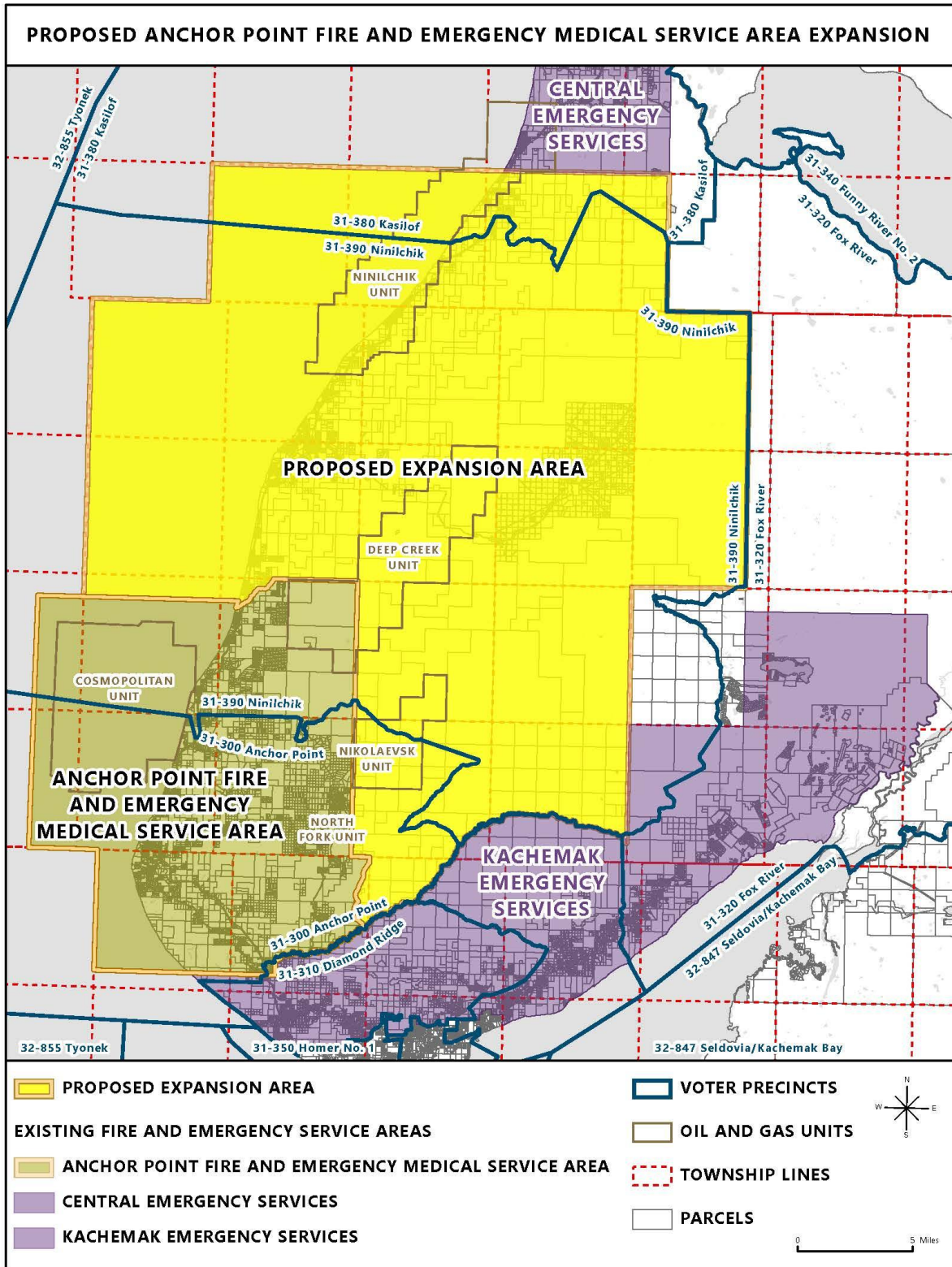
No mill levy in excess of 2.95 mills shall be levied on behalf of the service area unless an increase is approved by the assembly during the budgetary process.

Anchor Point Service Area Property Taxes at 2.95 mills (EXISTING BOUNDARIES): Estimated annual tax revenue based on the current assessed values provided, \$295 per \$100,000 in taxable assessed value \$1.2 million.

Ninilchik Emergency Service Area Property Taxes at 2.95 mills (ADDITIONAL AREA): Estimated annual tax revenue based on the current assessed values provided, \$295 per \$100,000 in taxable assessed value \$0.7 million.

Anchor Point and Ninilchik Joint Emergency Service Area Property Taxes: Estimated annual tax revenue based on the current assessed values provided, \$295 per \$100,000 in taxable assessed value \$1.9 million.

PROPOSED EXPANSION AREA:



BALLOT LANGUAGE

Shall the Kenai Peninsula Borough be authorized to exercise powers to provide fire protection and emergency medical services through the expansion of the Anchor Point Fire and Emergency Medical Service Area to include the Ninilchik area as defined by Section 2 of Ordinance 2020-31?

YES A yes vote approves the expansion of the Anchor Point Fire and Emergency Medical Services Area into the Ninilchik Area, creating a new service area to be called the Western Emergency Service Area.

NO A no vote would prohibit the expansion of the Anchor Point Fire and Emergency Medical Service Area into the Ninilchik area.