

DESK PACKET

(MATERIALS SUBMITTED AFTER MEETING PACKET PUBLICATION)

G. OTHER

- 2. KPB 21.18 Anadromous Waters Habitat Protection Annual Review**

KPB 21.18 ANADROMOUS WATERS
HABITAT PROTECTION
ANNUAL REVIEW

River Center Manager

Samantha Lopez

June 28, 2024



K-Beach Elementary
Kenai Watershed Forum's
Adopt-a-Stream Program, 2002

DONALD E. GILMAN RIVER CENTER

The Donald E. Gilman River Center is a multi-agency permitting and outreach center.

We house several permitting programs, streamlining the permitting process:

- KPB Planning & Zoning
- KPB Floodplain Management
- KPB Habitat Management
- ADFG Habitat



21.18 - PERIODIC REVIEWS

Annual review: A staff report to the Planning Commission regarding permitting & trending activities

5-year review (2025): Staff review to the Planning Commission & Assembly for any code changes

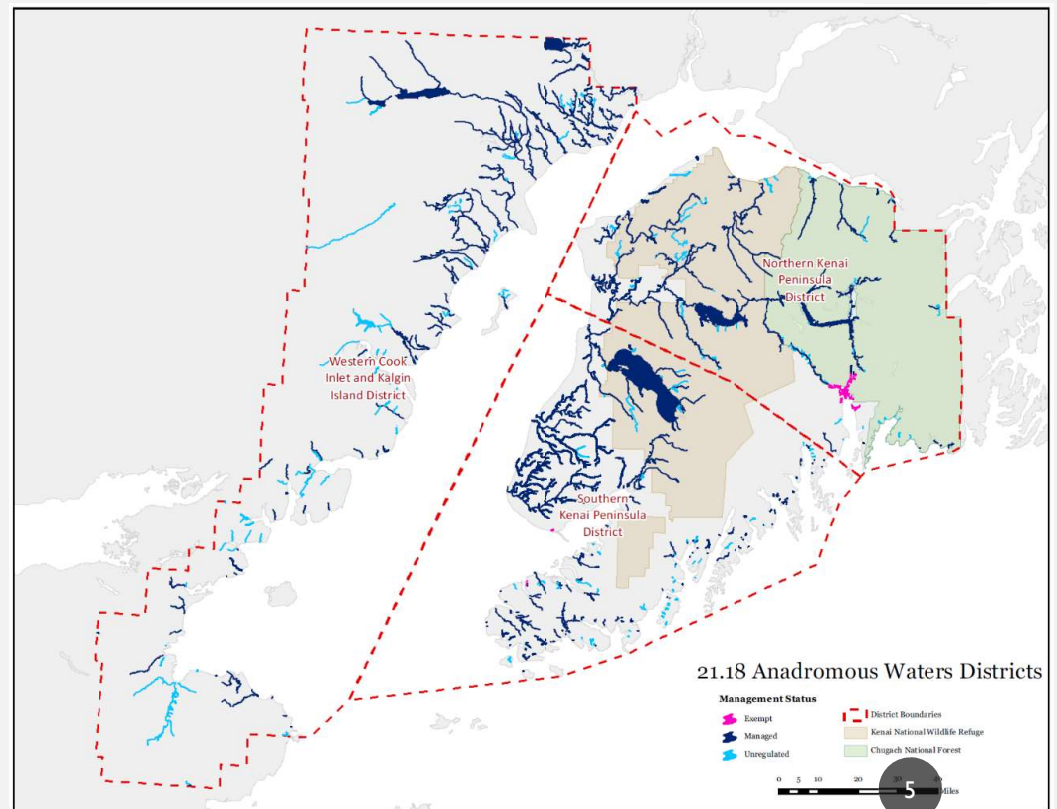
3-year review (2024): Staff review to update KPB's regulated anadromous waters

KPB 21.18 ANADROMOUS WATERS

Habitat Protection District

“all lands within 50 horizontal feet of anadromous water bodies”

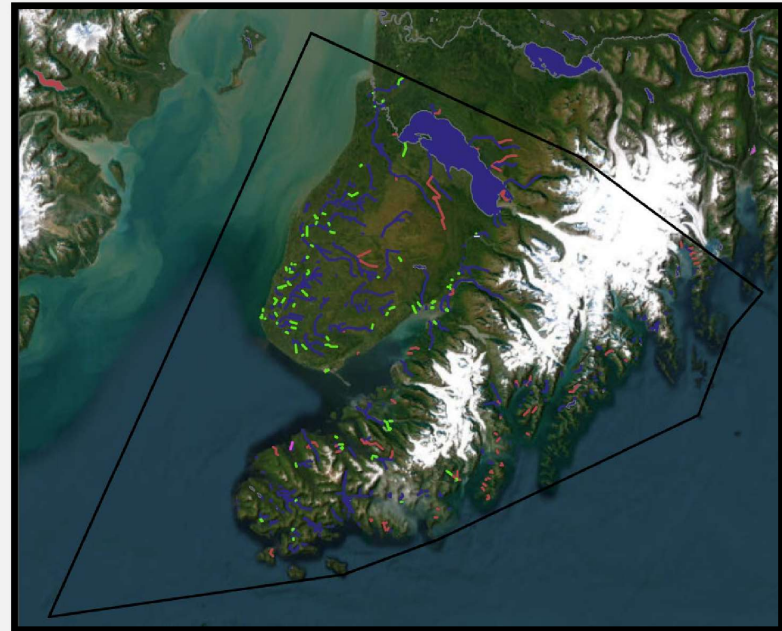
- 793 waterbodies
- 2,337 miles of streams & rivers
- 70 lakes
- Over 28,000 acres



KPB 21.18 ANADROMOUS WATERS

Process to Adopt New Streams

- Review ADFG data
- Substantiated vs. Unsubstantiated
- Southern District
 - 358 Currently Regulated
 - 97 Substantiated (proposing new regulation)
 - 76 Unsubstantiated (proposing no regulation)



WHAT DO YOU NEED A PERMIT FOR?

Permit Needed

- Bank Restoration
 - Spruce Tree Revetments
 - Root Wads
 - Brush Layering
 - Elevated, light-penetrating walkways (ELP's)
 - Tree Cutting
- General Construction
 - Permanent structures, filling, grading
- Infrastructure
 - Culverts, bridges, roads

No Permit Needed

- Vegetation Maintenance
 - Trimming, pruning
 - Planting native vegetation
 - Removing naturally downed trees
- Maintenance of prior-existing uses
- Removing derelict structures
- Flagpoles

RESTORATION PROJECTS



INFRASTRUCTURE PROJECTS



RIP RAP

- Impervious surfaces are not allowable
 - Accelerates erosion
 - Can damage adjoining properties
 - Provide significantly less fish habitat
- When do we allow rip rap?
 - Public Infrastructure
 - Transportation (highways, railroads)
 - Utilities (power stations)
 - i.e. for the protection of essential public services



THE PURPOSE OF KPB 21.18



THE PURPOSE OF KPB 21.18



Before & after restoration

THE PURPOSE OF KPB 21.18



TYPES OF PERMITS

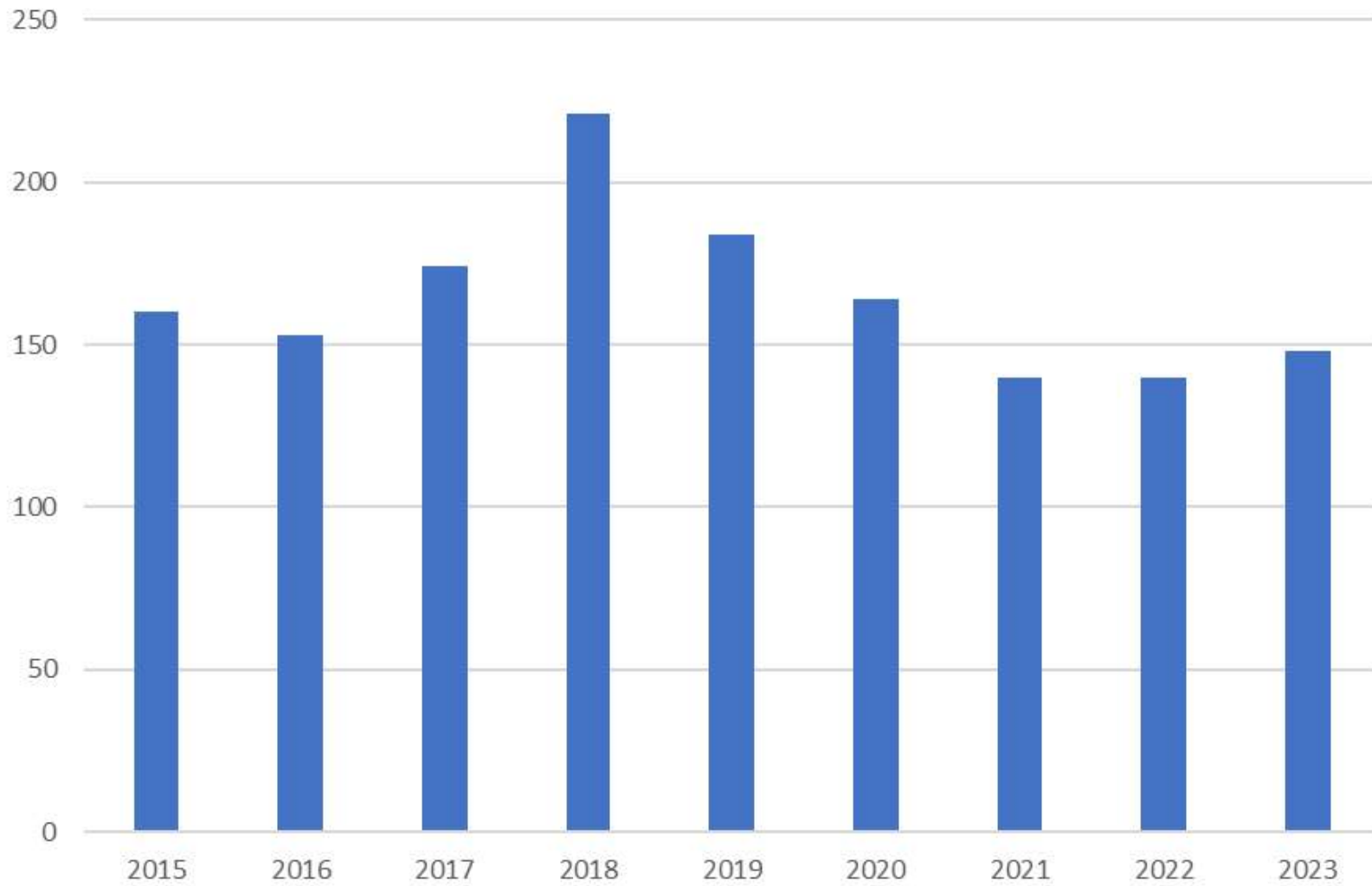
Permit Types

- Tree Cutting Permits
 - Same day – counter, email, etc.
- Staff Permits
 - New projects
 - Prior existing uses
 - Emergency authorizations
- Conditional Use Permits

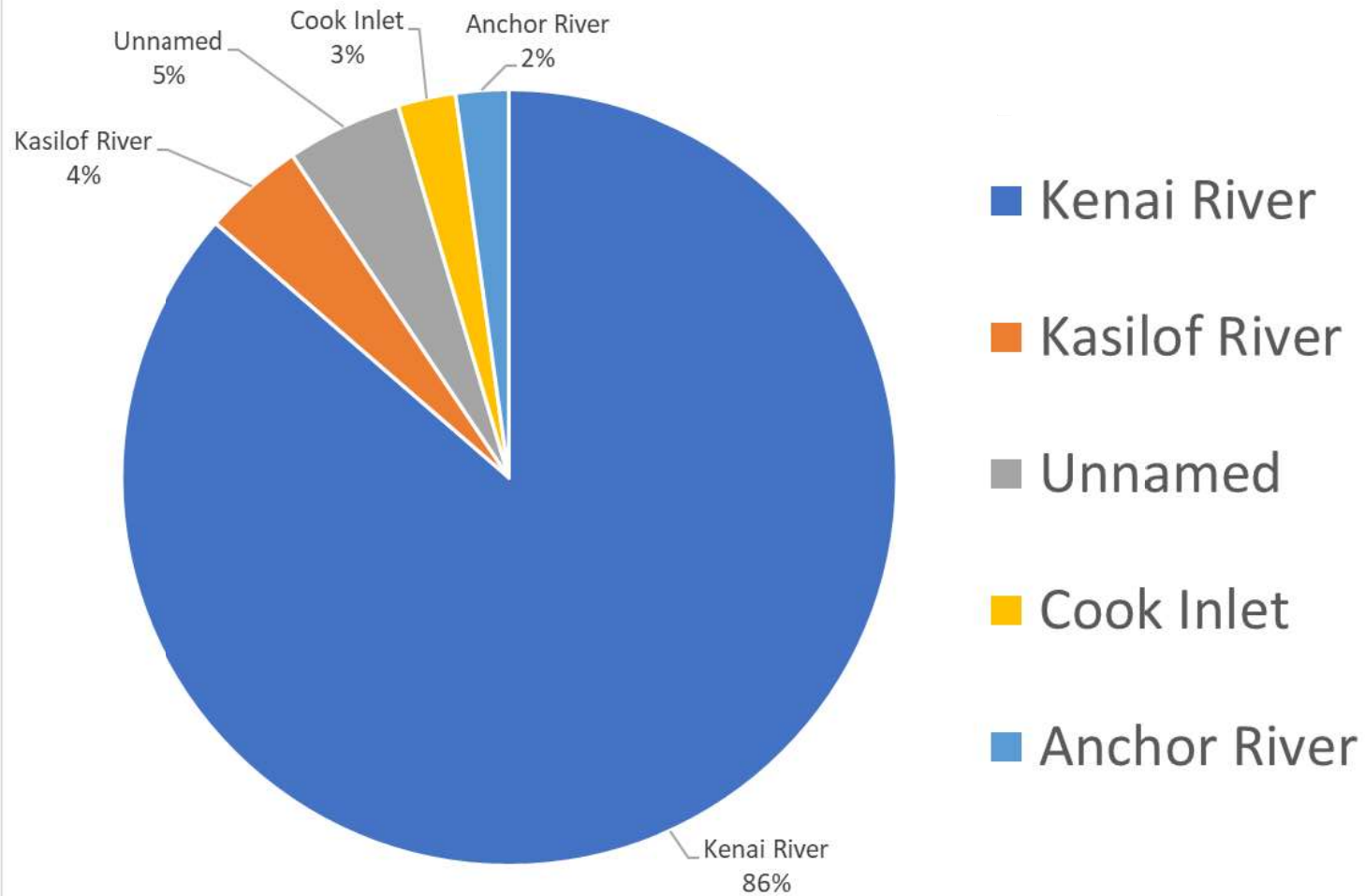
Conditional Use Permits

- Issued by the KPB Planning Commission
 - Fish cleaning stations
 - Fences
 - Signs
 - Public facilities and infrastructure
 - Wells and waterlines
 - ADA structures
 - Boat launches*

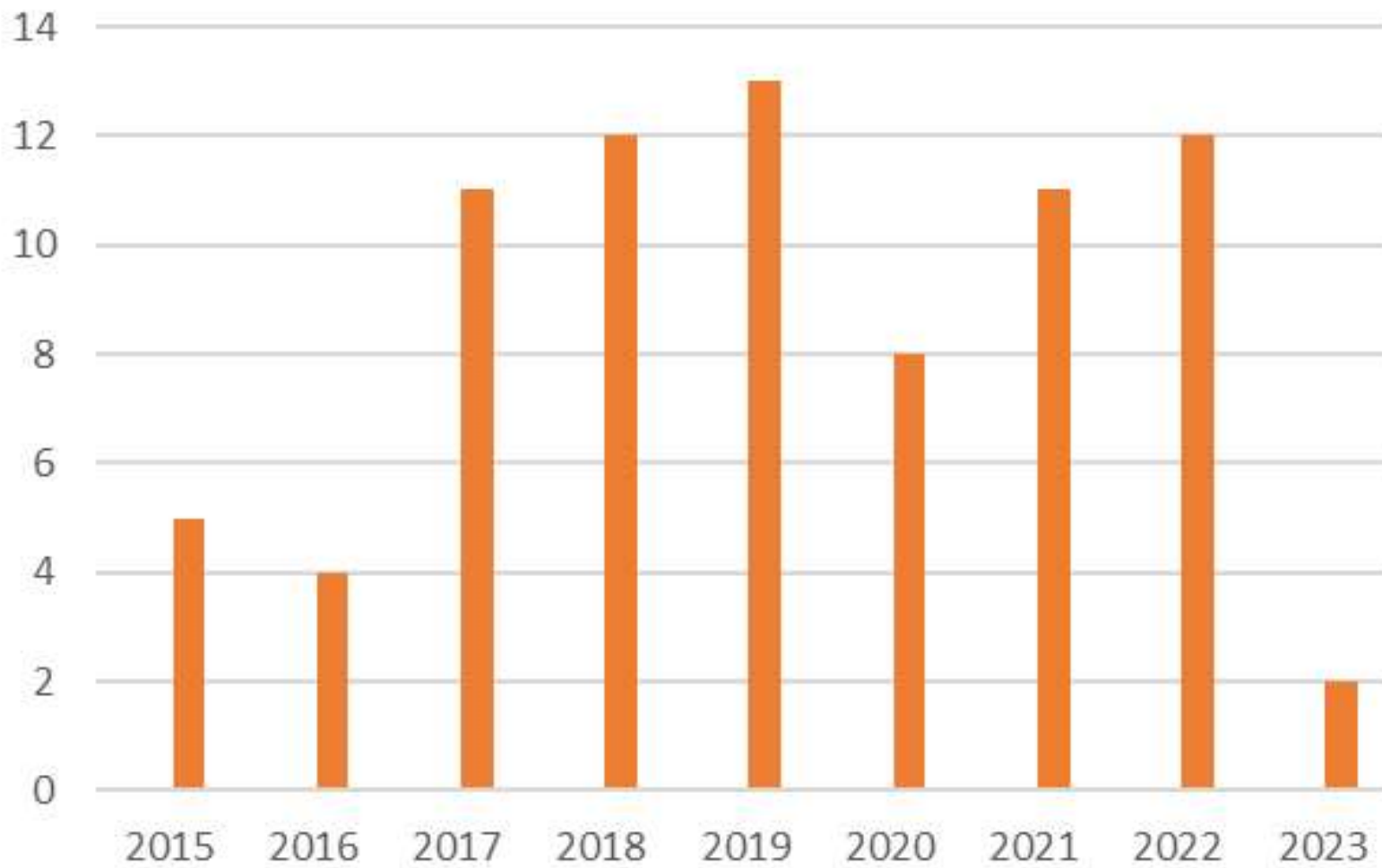
HPD Permits by Year



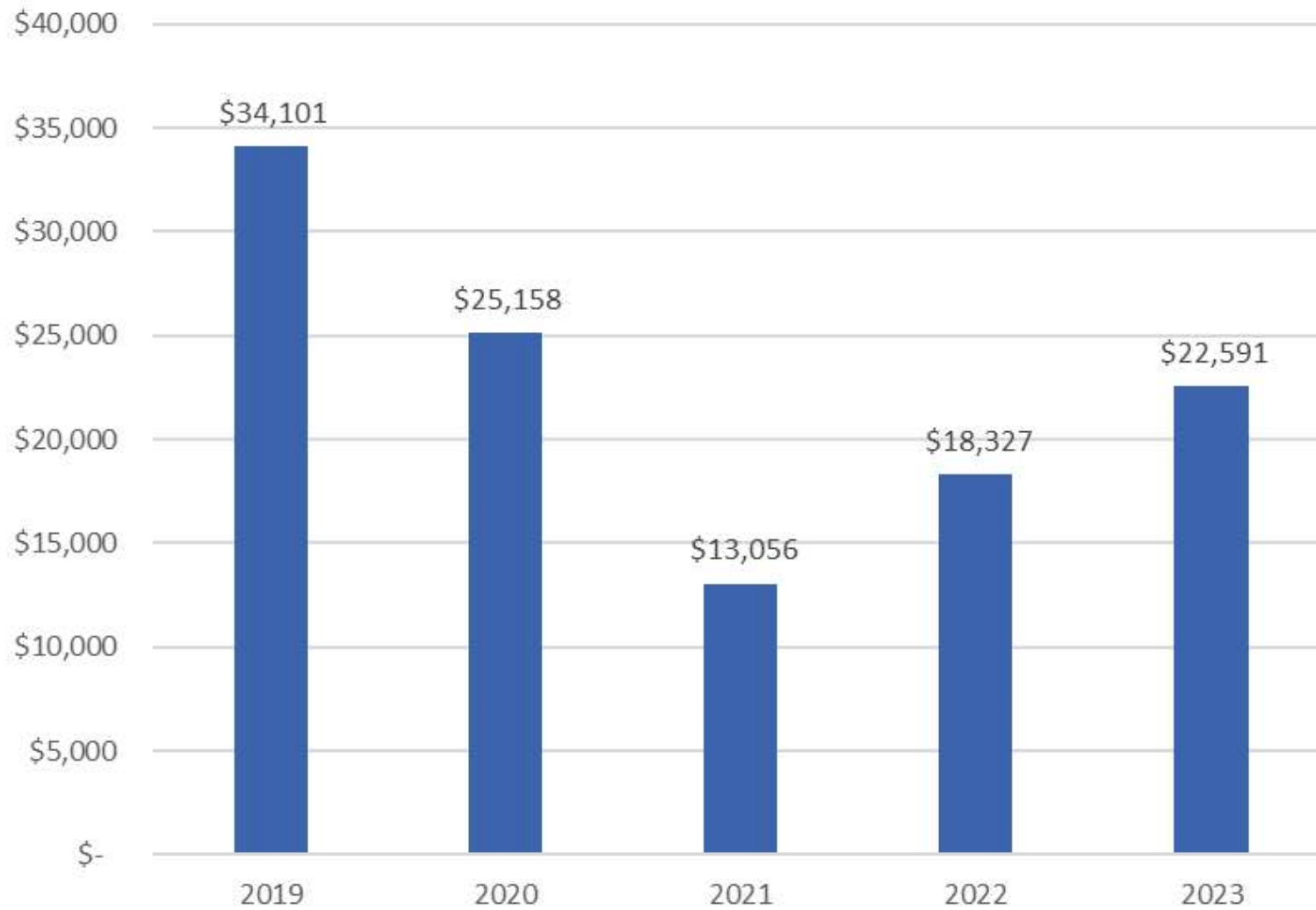
HPD Permits by Waterbody



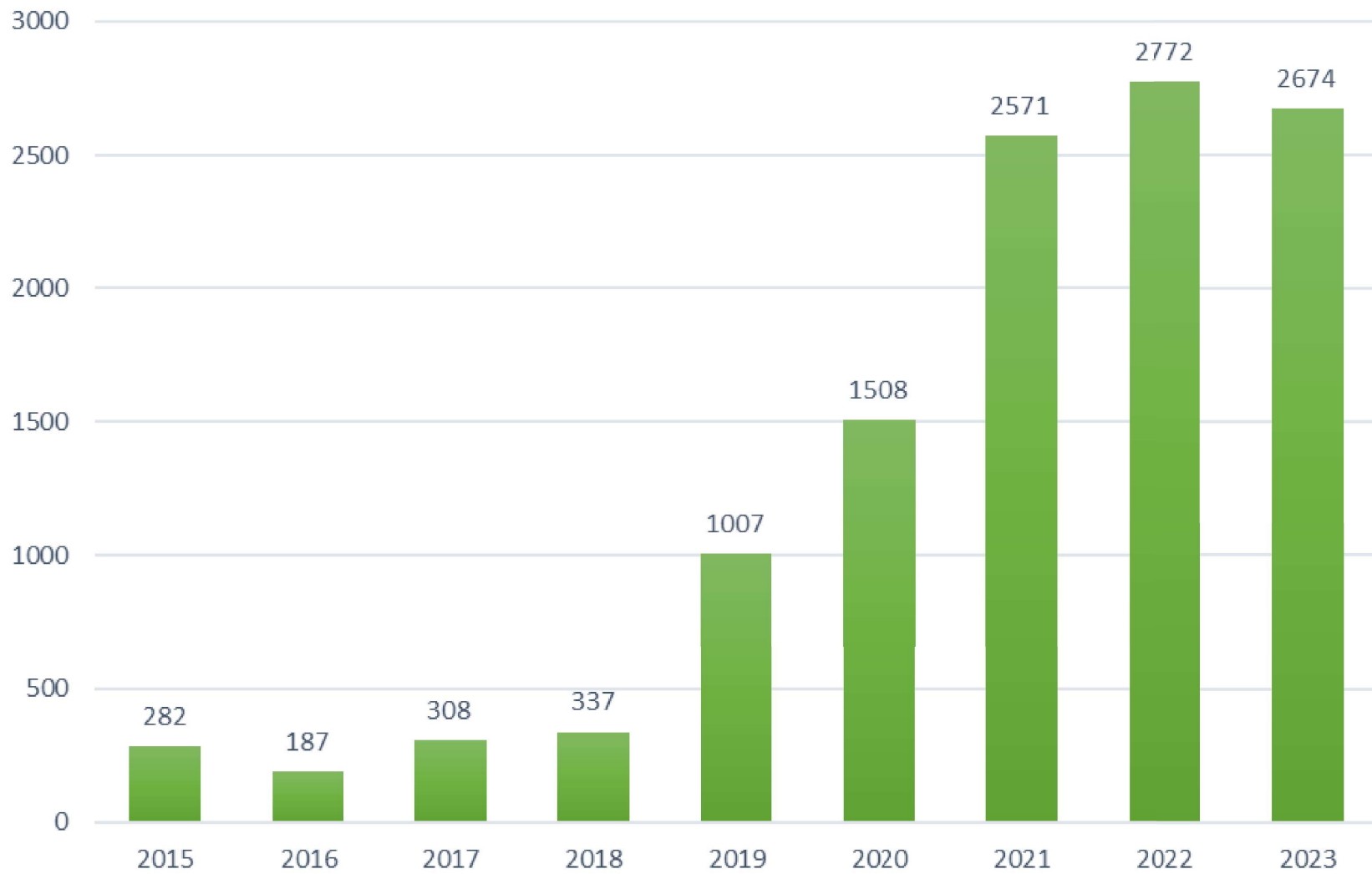
Conditional Use Permits



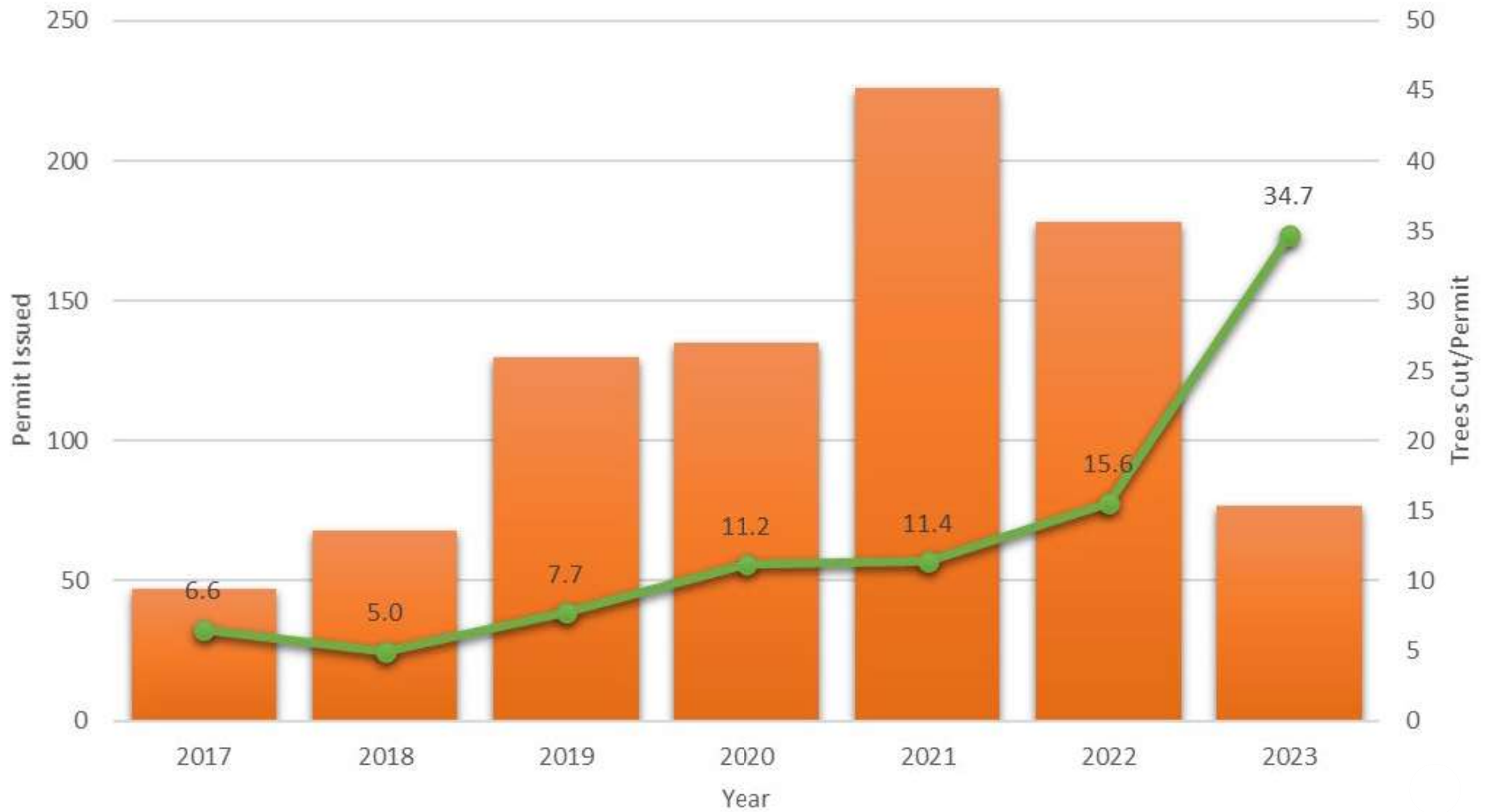
Tax Credits for Restoration Projects



Trees Removed Per Year



Minor Veg Permits/Year



RIVER CENTER LOOKING FORWARD

- Spruce Bark Beetle Outbreak
- Adopt new Kenai River Floodplain Maps this fall, effective February 2025
- Material site code rollout October 1st
- Multi-Agency Collaboration Challenges
- Identify new mission(s) for RC



FLOODING RESOURCES + PHOTOS

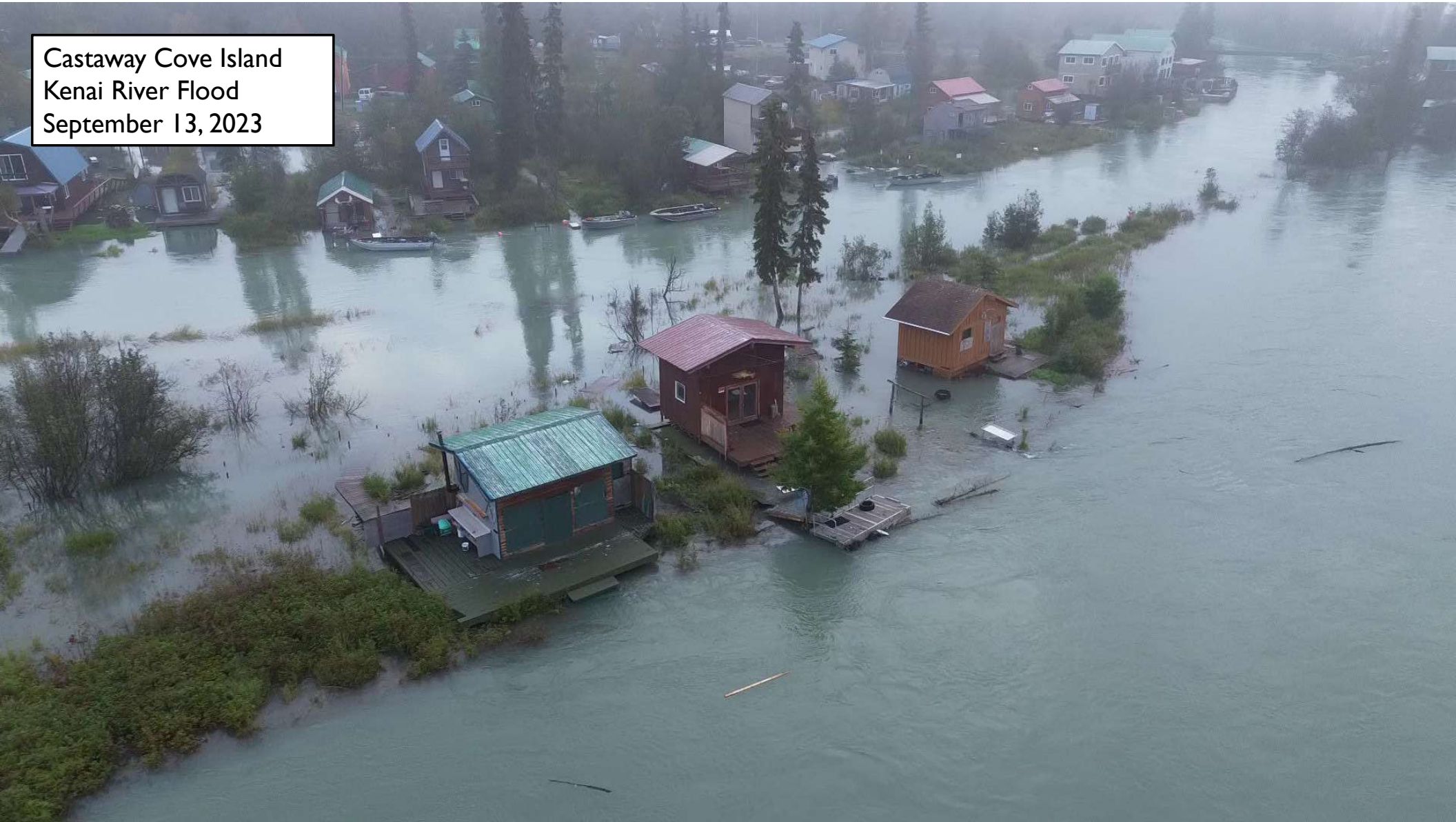
Big Eddy
Live Inundation Map
water.noaa.gov



Big Eddy
Kenai River Flood
September 12, 2023



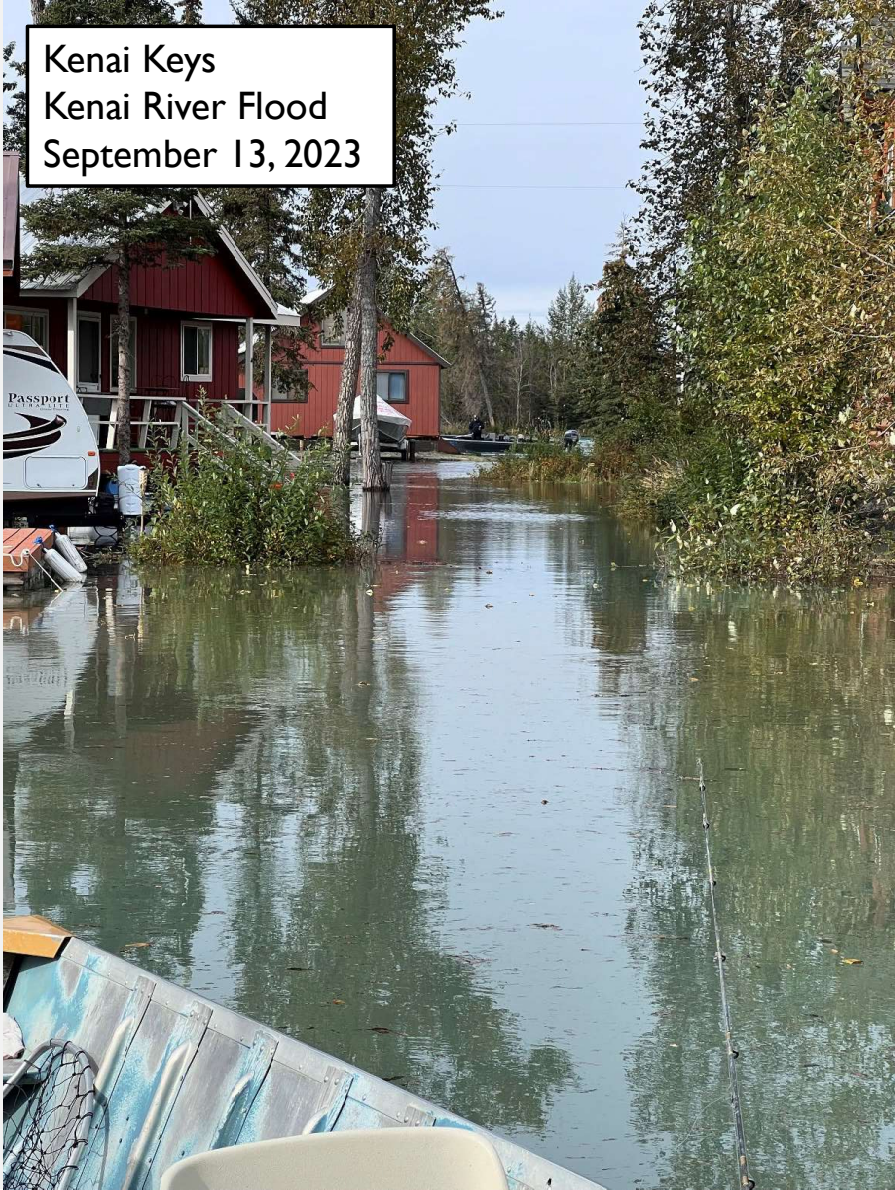
Castaway Cove Island
Kenai River Flood
September 13, 2023



Kenai Keys
Kenai River Flood
September 13, 2023



Kenai Keys
Kenai River Flood
September 13, 2023



Kenai Keys
Kenai River Flood
September 13, 2023



Kenai Keys
Kenai River Flood
September 13, 2023



Kenai Keys
Kenai River Flood
September 13, 2023



COMMENTS/QUESTIONS

Minor Ice Jam - Soldotna
Kenai River
January 8, 2024