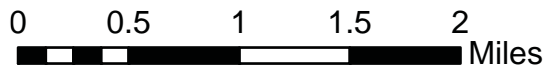
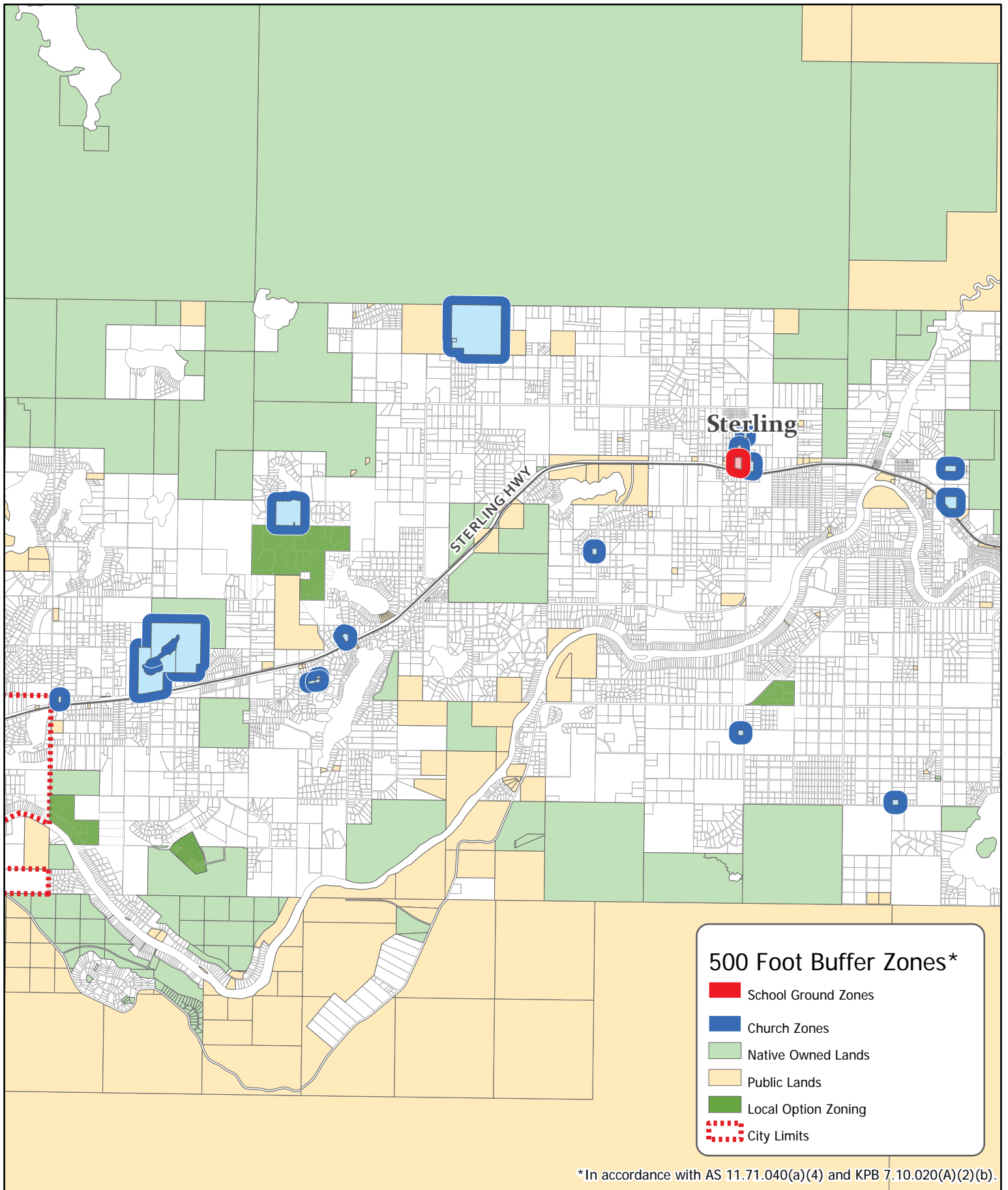


The information depicted hereon is for a graphical representation only of best available sources. The Kenai Peninsula Borough assumes no responsibility for any errors on this map.



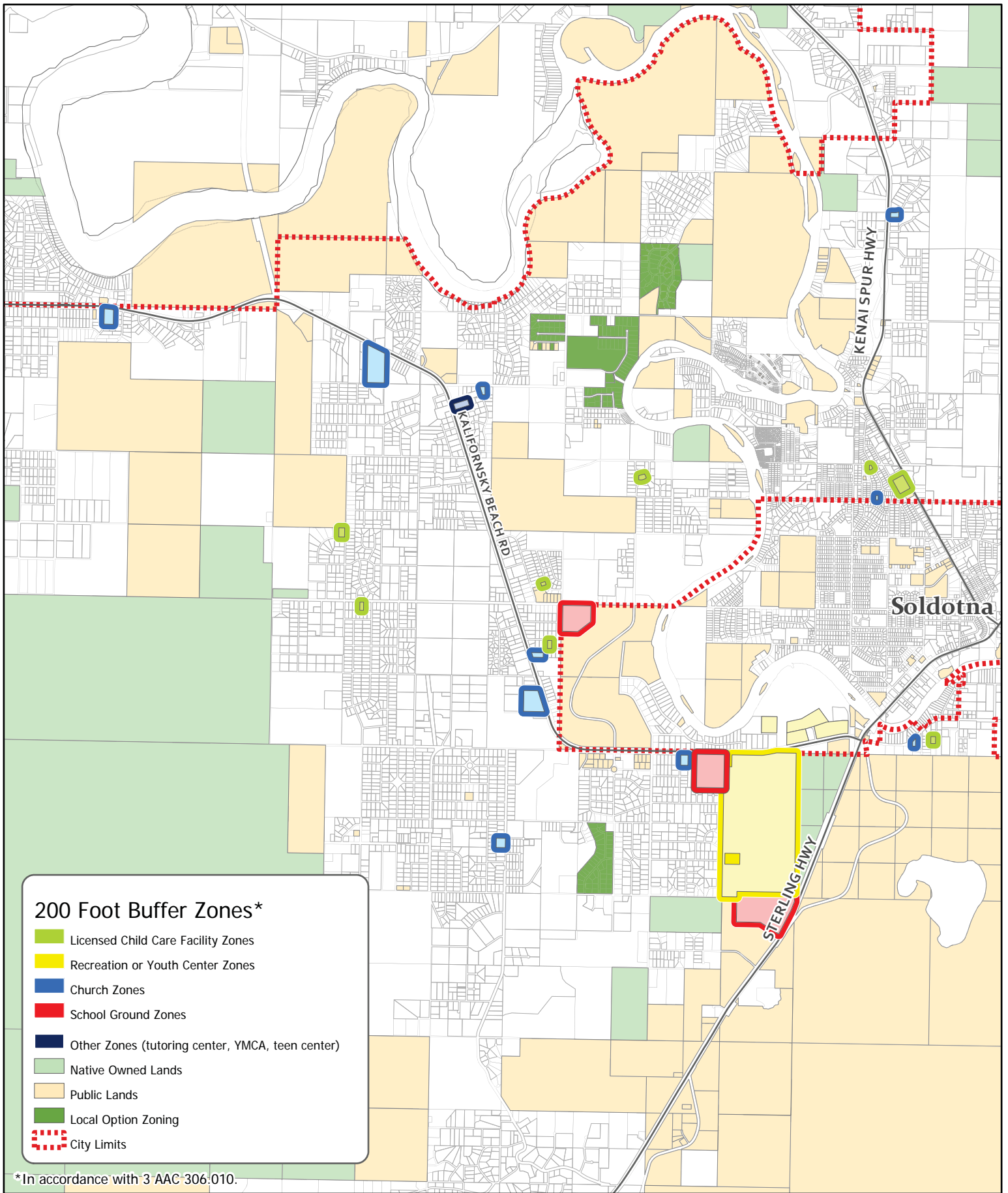
Date: 7/23/2015



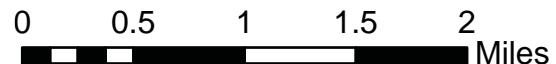
The information depicted hereon is for a graphical representation only of best available sources. The Kenai Peninsula Borough assumes no responsibility for any errors on this map.



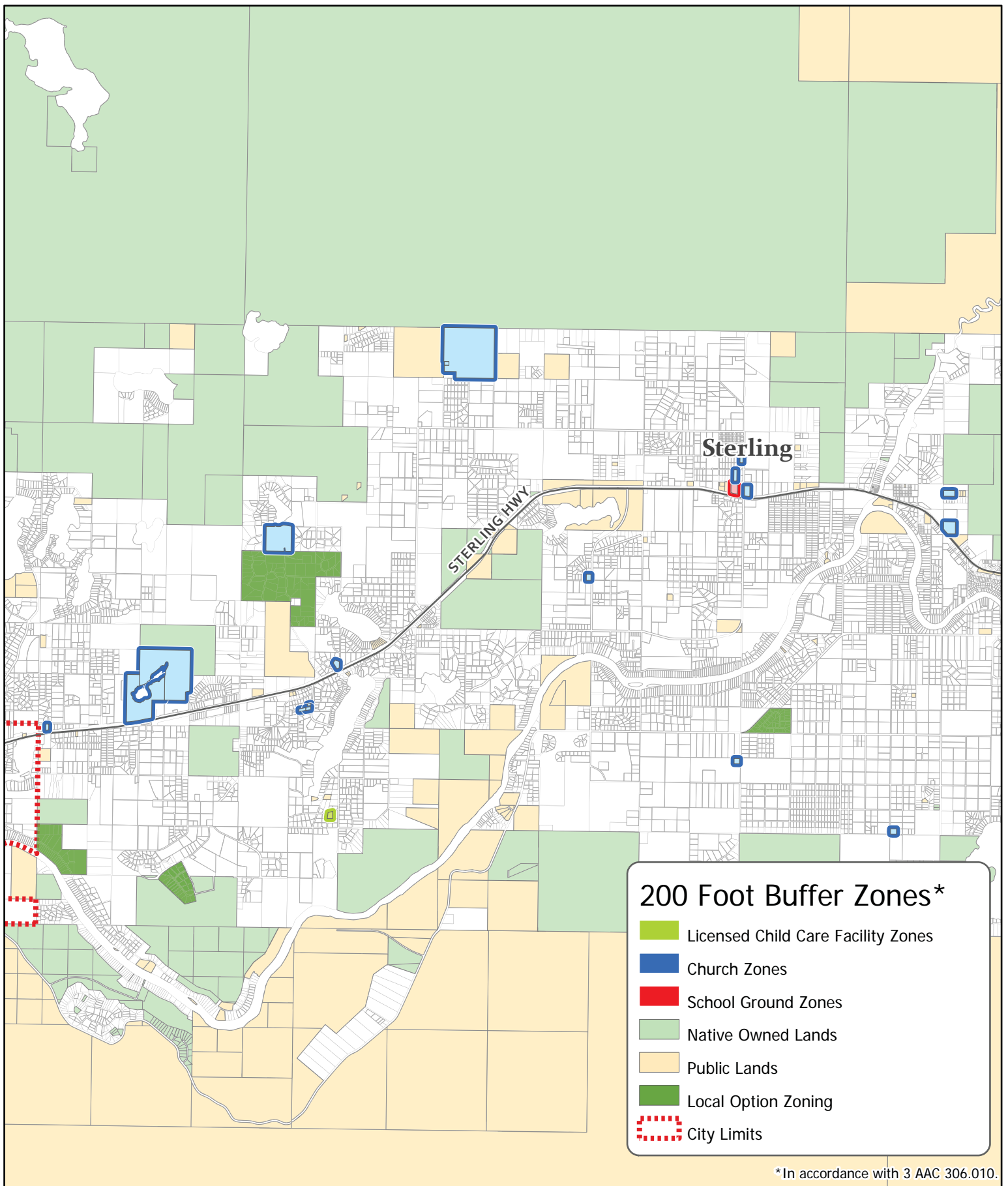
Date: 7/23/2015



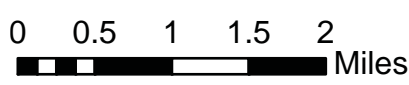
The information depicted hereon is for a graphical representation only of best available sources. The Kenai Peninsula Borough assumes no responsibility for any errors on this map.



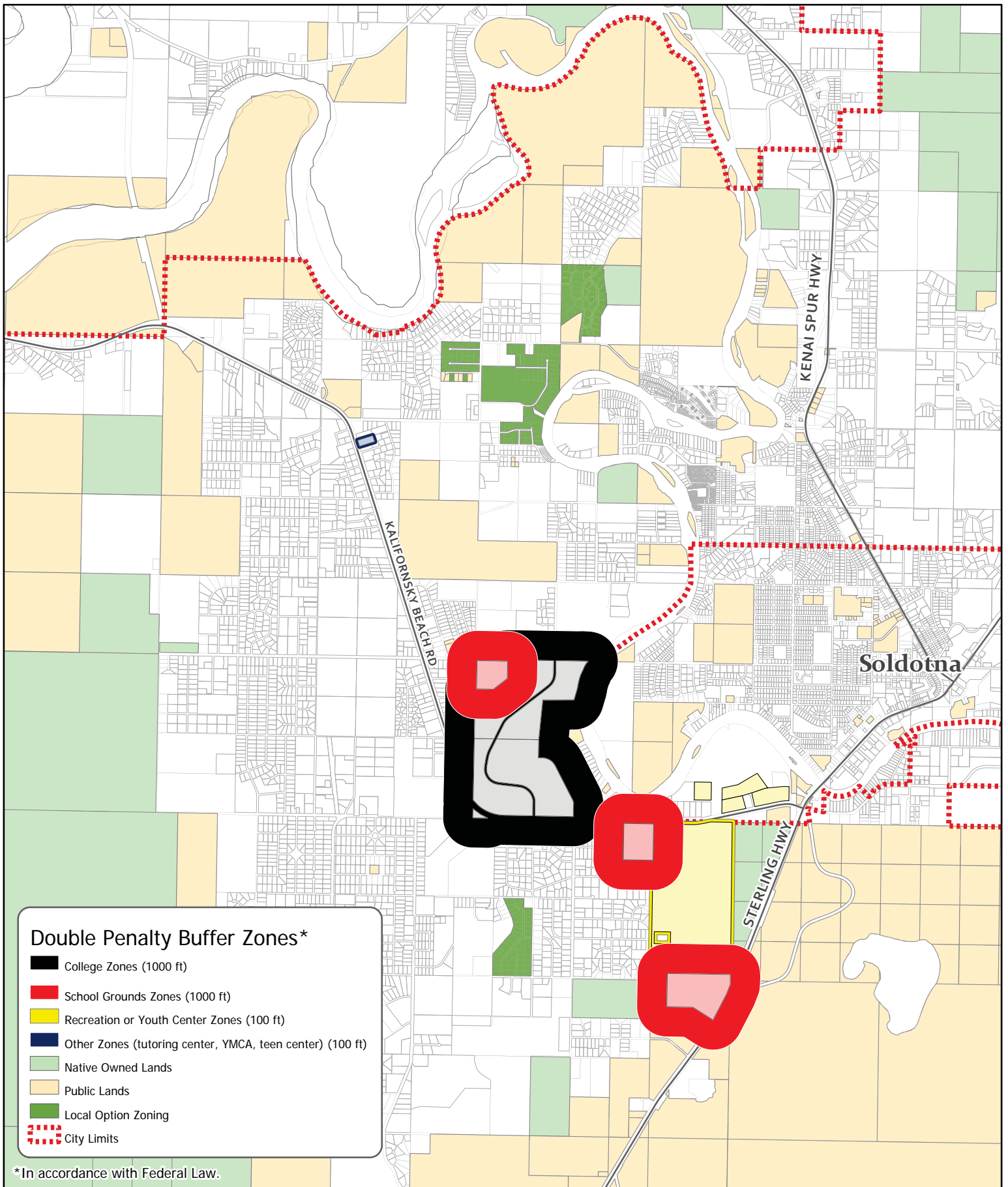
Date: 7/23/2015



The information depicted hereon is for a graphical representation only of best available sources. The Kenai Peninsula Borough assumes no responsibility for any errors on this map.



Date: 7/23/2015



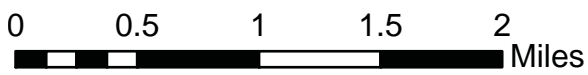
Double Penalty Buffer Zones*

- College Zones (1000 ft)
- School Grounds Zones (1000 ft)
- Recreation or Youth Center Zones (100 ft)
- Other Zones (tutoring center, YMCA, teen center) (100 ft)
- Native Owned Lands
- Public Lands
- Local Option Zoning
- City Limits

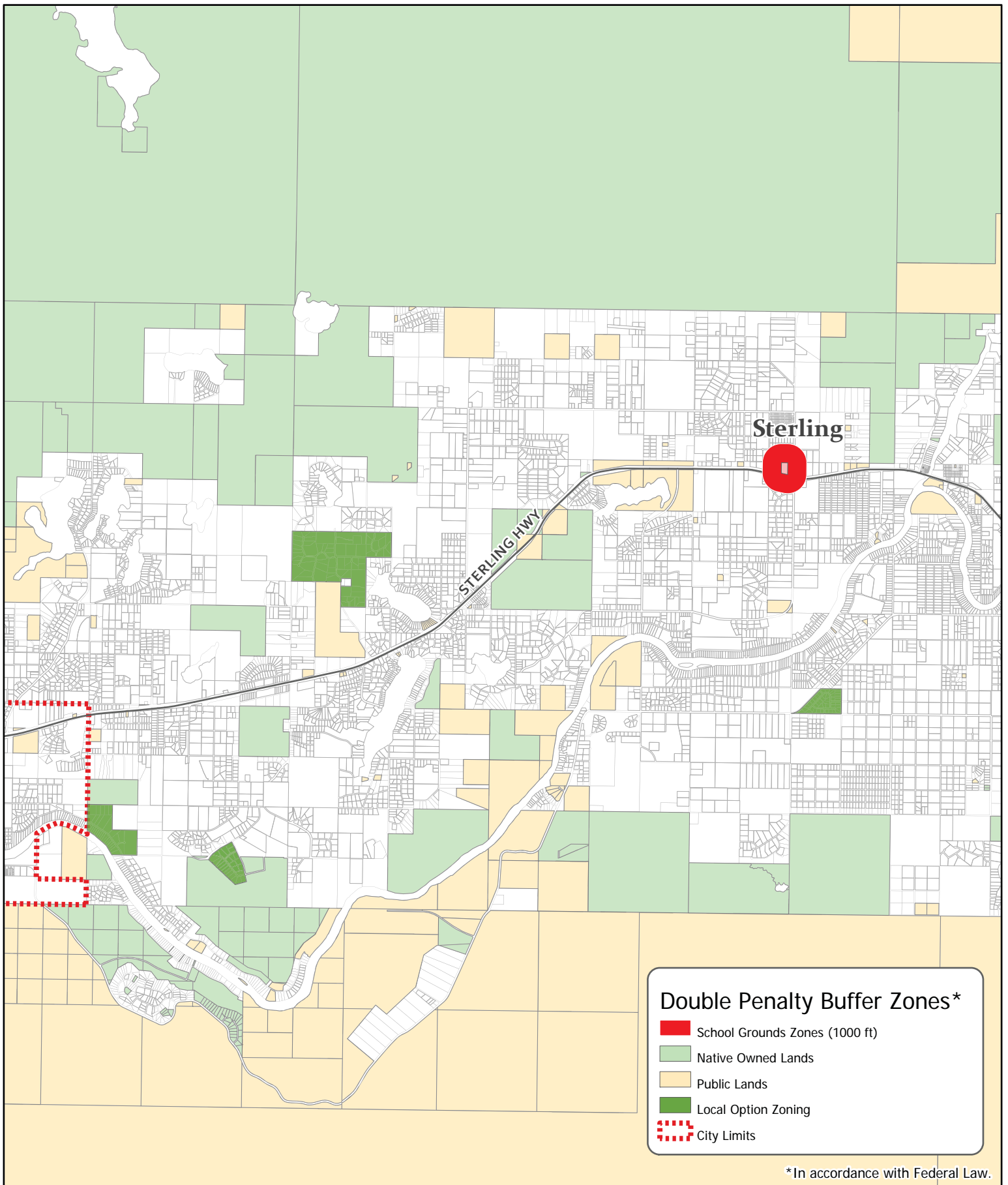
*In accordance with Federal Law.



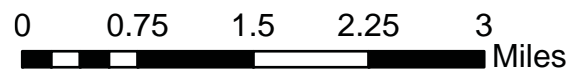
The information depicted hereon is for a graphical representation only of best available sources. The Kenai Peninsula Borough assumes no responsibility for any errors on this map.



Date: 7/23/2015



The information depicted hereon is for a graphical representation only of best available sources. The Kenai Peninsula Borough assumes no responsibility for any errors on this map.



Date: 7/23/2015