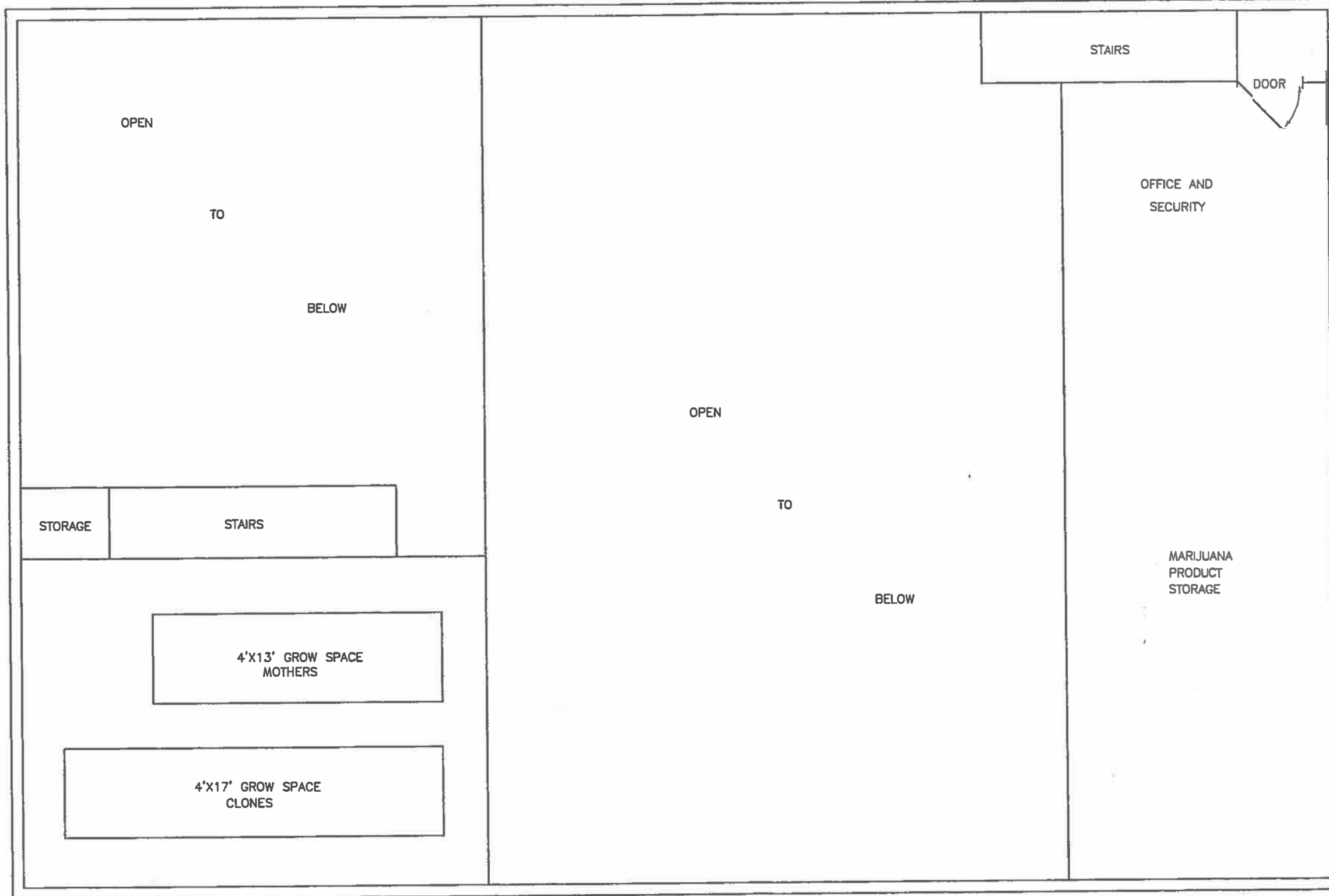


REVISIONS
LADY GRAY GROWING AND GOURMET MEDIBLES
DOWNSTAIRS FLOOR PLAN
ALASKA CONSULTING AND ENVIRONMENTAL ENGINEERING ARNE K. TIKKA, P.E. P.O. BOX 2324 SOLDOTNA, ALASKA 99689 (907) 262-3197
DATE: MARCH 2017 DRAWN: RT CHECKED: AT SCALE: AS SHOWN PROJ. NO.: 17-025
FIGURE <div style="font-size: 2em; font-weight: bold; margin: 10px 0;">1</div> OF 2



REVISIONS

LADY GRAY GROWING AND GOURMET MEDIBLES

UPSTAIRS FLOOR PLAN

ALASKA CONSULTING AND ENVIRONMENTAL ENGINEERING
 ARNE K. TIKKA, P.E.
 P.O. BOX 2324 SOLDOTNA, ALASKA 99689
 (907) 262-3197

DATE	MARCH 2017
DRAWN	RT
CHECKED	AT
SCALE	AS SHOWN
PROJ. NO.	17-025

FIGURE

2

OF 2

SCALE: 1"=5'

Driveway width where it meets the borough road Pine Street is 28' which isn't shown on this diagram because the driveway runs 80' to the left of where this diagram leaves off.



APPROX. DRIVEWAY

Pull in route for delivery, ample space for large trucks as well to pull in and back out into large open area before exiting front forward onto borough road.

Loading/Unloading

PRIVATE WELL

100' R

BUILDING

PARKING

1
2
3
4

CO

SEPTIC SYSTEM

ALASKA CONSULTING AND ENVIRONMENTAL ENGINEERING

ARNE K. TIKKA, P.E.

P.O. BOX 2324 SOLDOTNA, ALASKA 99669
(907) 262-3197

DATE: MAR. 2017

DRAWN: RT

CHKD: AT

SCALE: 1"=20'

PROJ #: 17-025

LADY GRAY GROWING AND GOURMET MEDIBLES

APPROXIMATE SITE PLAN

SHEET

1

OF

1