

TRAIL MANAGEMENT PLAN FOR PUBLIC TRAILS ON BOROUGH LAND

CTMA No. 2018-01

TRAIL MANAGER:

Kachemak Nordic Ski Club, Inc.
PO Box 44
Homer, AK 996603

www.kachemaknordicskiclub.org

Trail Management Levels and Elements (Intensive, Regular, Intermittent)

Baycrest Trails
Marathon Connector Trail
Lookout Mountain Recreation Area
Lookout Trails
McNeil Trails

Summary of Trail Management:

SEASONS OF TRAIL MANAGEMENT

Year Round

TRAIL WIDTH (Typical)

10-20 Feet

TRAIL MAINTENANCE ACTIVITIES

Periodic Brushing/Clearing

Grading

Snow Grooming

Erosion Controls

TRAIL IMPROVEMENTS

Trailheads

Parking Area

Signs

Sanitation (Trash/Outhouse)

Picnic Area

Shelters

Culverts

Bridges

New Trails

TRAIL ADMINISTRATION

Competitions/Sponsored Events

Grants

Signage

Equipment Storage Facilities

TRAIL ACTIVITIES

Non-Motorized:

Skiing

Snowshoeing

Hiking

Walking/Running

Pet Friendly

USE REGULATIONS

- Non-motorized use only (except authorized maintenance vehicles). Management methods to support the regulations and restrictions.
- Bikes and horses prohibited due to wet conditions and erodible soils not managed for summer use.
- Dogs are prohibited at Lookout Mountain Recreation Area and trails, and at Upper Baycrest trails. One dog per skier is allowed elsewhere.

TRAIL MANAGEMENT LEVELS

INTENSIVE

Lookout Mountain Recreation Area, Lookout Trails, Selected McNeil Trails & Baycrest Trails

Ground disturbances and erosion control measures have been, or may be required. Trails can be groomed with as little as 6-inches of snow depth.

During winter, other users, such as snowmachiners, snowshoers, and bikers should avoid KNSC-groomed trails whenever possible, and cross perpendicular to ski trails only when necessary. During the summer season, these trails should be avoided except for hiking. Further restrictions apply to the Lookout Mountain Recreation Area, due to the density of the trail network and the steep, challenging terrain. Unauthorized motorized travel and bicycling on KNSC trails is not permitted anywhere or anytime. Dogs and snowshoeing are not permitted on these trails once winter grooming has begun.

REGULAR

Selected Baycrest Trails & McNeil Trails

Trails are groomed on a regular basis with portions mowed, but no substantial ground disturbance is required. Many of these trails are suitable only for winter use due to wet conditions. Wet trails are more susceptible to erosion especially by continuous tire tracks, which create narrow channels on the soft, wet tread. Primary trail maintenance activities are brushing, mowing, and grooming on the snow surface once the snow depth exceeds approximately 12-18 inches.

During winter grooming season, other users, such as snowmachiners, snowshoers, and bikers should avoid these trails whenever possible, and cross perpendicular to ski trails only when necessary. Snowshoe users should walk on the side of the trail to prevent damage to the

smooth snow surface and the tracks set for skiers on classic skis. One dog per skier is allowed; mushing and skijoring are not permitted. Hikers and bicyclists are not permitted during the winter grooming season. During summer, hiking is permitted as conditions allow.

INTERMITTENT

Marathon Connector Trail

Trails are groomed and brushed clear when snow depth is sufficient, approximately 3-4 feet deep. These trails should be avoided by motorized users and crossed perpendicularly when necessary. Snowshoe users should walk to the side of the trail to prevent damage to the smooth snow surface and the set tracks. One dog per skier is allowed; mushing and skijoring are not permitted. Because this trail is maintained only when the snow is deep during winter, there is no trail tread during the non-grooming season for hiking or biking. This trail may vary in location to some degree from year-to-year based on snow conditions and track setting methods.

TRAIL MANAGEMENT ELEMENTS

CLEARING AND BRUSHING

Most of the trail maintenance performed by KNSC has involved vegetation management: mowing using a mower towed behind a tracked ATV, and cutting willows, alders, and deadfall from the trail corridor. Mowing is avoided where trail conditions are too wet.

GRADING

Outside of the Lookout trail system, KNSC has pulled stumps, flattened corners and graded side-hills using heavy equipment to the minimal extent necessary. At the Lookout Mountain Recreation Area, these ground-disturbing activities were limited to the extent necessary to create a homologated race course.

EROSION CONTROL

The trails at the Lookout Mountain Recreation Area were constructed under a SWPPP to minimize sediment discharge to receiving waters. Natural contours were followed, vegetation buffers were maintained, and culverts were installed. Wattles, straw bales, temporary settling ponds, and outlet protection were used during trail construction to minimize sediment transport to receiving waters. Two culverts on that system have required further maintenance. KNSC will continue to use and maintain such measures as appropriate where ground disturbance is necessary or sediment transportation is a problem.

WINTER GROOMING

On the snow surface, rollers, drags, and Ginzugroomers (by Yellowstone Track Systems) are pulled behind tracked ATV's and snowmachines. Sno-Cat grooming is contracted when conditions are suitable.

LITTER

Litter has traditionally not been a problem on KNSC trails. Community members and event and program volunteers actively self-police. Dog waste bags are available at appropriate trailheads, and signs are displayed at appropriate trailheads. Users must pack out all dog waste.

WRITTEN DESCRIPTION OF TRAILS:

Kachemak Nordic Ski Club, Inc. (KNSC) has successfully developed and currently maintains over 80 kilometers, approximately 50 miles, of ski trails at four different trail systems in the greater Homer area. Approximately 40 kilometers of these trails are on KPB land, pursuant to a lease authorized by Kenai Peninsula Borough Assembly Ordinance 2008-09, and a Land Use Permit serialized as LMD 06-22.

McNeil Trails are located near the McNeil Canyon Elementary School and the McNeil Canyon Emergency Services Station in the Fritz Creek community. These trails are frequented by students from local elementary schools for their after school ski programs, especially McNeil Canyon and Kachemak-Selo. Baycrest Trails span between the Homer Transfer Facility at MP 169 of the Sterling Highway, to the Diamond Ridge Emergency Services Station on Ridge Road. The trails then intercept the Marathon Connector Trail which takes users to the Lookout Trails and Lookout Mountain Recreation Area in the Diamond Ridge community along Ohlson Mt. Road.

Many events and two programs are sponsored and promoted by KNSC, and include partnerships with local non-governmental organizations such as Haven House with their Ski-For-Women event, and a Ski-Your-Age event that supports the Homer High School ski team. In partnership with the Kenai Peninsula Borough School District, KNSC hosts a high school invitational race and a middle school race. Potential establishment of a biathlon program and shooting range along the McNeil trails is being investigated.

In alternate years, KNSC hosts the Besh Cups, a national-qualifying series of races attended by skiers and their friends and family from all over the State of Alaska. In 2018 there were 220 Besh Cup racers attending on the Lookout Trails. KNSC puts on a Friday-Night-Lights ski

event, a Wine-and-Cheese and Wooden Ski Tour, a Marathon Race, and a Sea-to-Ski triathlon race, in partnership with Homer Cycling and Homer Running clubs. These events are attended by 50-100+ people. KNSC has two long-standing programs: Kachemak Women's Nordic and Junior Nordic. The Junior Nordic program provides low-cost ski and boot rental, and serves around 100 kids. The Women's Nordic program typically has 40-50 registrants.

These existing trails have been designated primarily for Nordic skiing in the winter and many are suitable only for winter use due to wet conditions, which makes them susceptible to erosion. Unauthorized use of motorized vehicles and bicycling is not permitted. Horses, hikers, bikers, and snowshoes are not permitted during the winter grooming season and should avoid groomed ski trails whenever possible, crossing them perpendicularly when necessary. One dog per skier is allowed at some trail locations, however skijoring and mushing are not allowed. KNSC recognizes the potential for use of these trails by other users, therefore the Club supports the construction of year round, multi-use (human-powered only) trails that can benefit multiple user groups while maintaining the integrity of the current Nordic trails.

KNSC is requesting to obtain a twenty-year "Trail Management Agreement" with the Kenai Peninsula Borough to continue maintaining and creating trails on KPB land. KNSC recognizes and respects KPB's primary use of the lands at the Homer Transfer Facility, Diamond Ridge Emergency Services Station, McNeil Canyon Elementary School, and McNeil Canyon Fire Station, and that KPB may have other, unknown uses for its land at some time in the future, and as a result, all trails will be constructed and maintained in a way that best utilizes the topography of the land for trails while providing corridors, or set asides, for KPB future use.

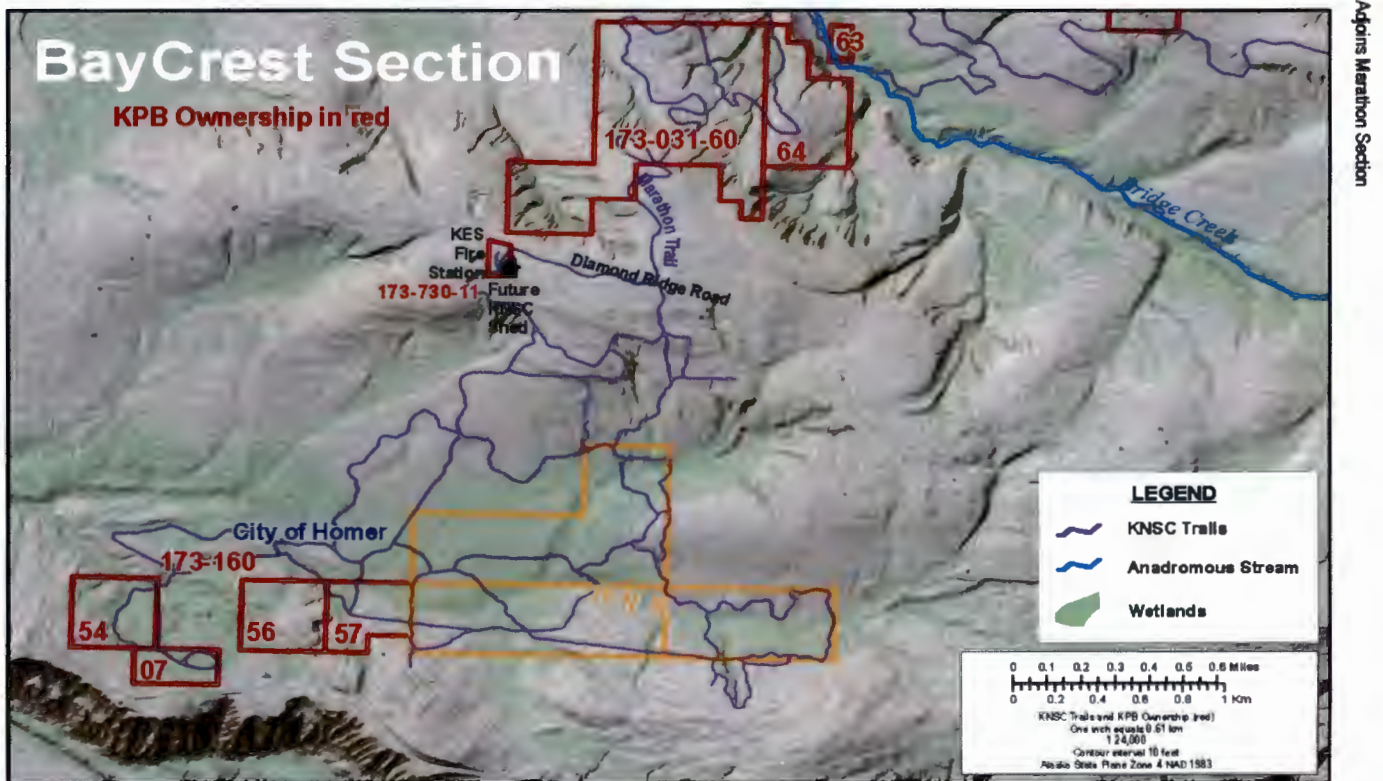
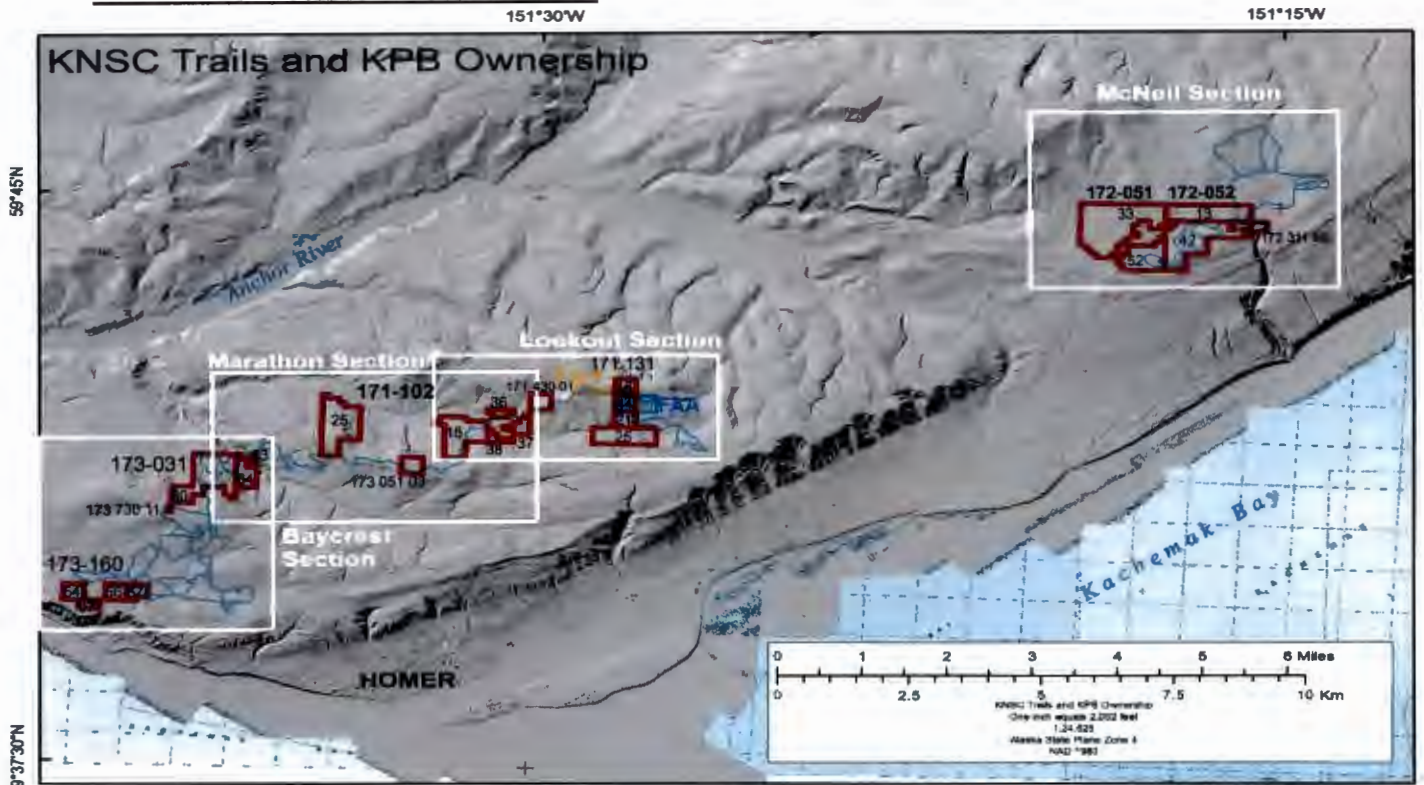
Trails are approximately 16 feet wide and vary from 10-20 feet wide. Parking is available at Lookout Mountain Recreation Area, as well as in designated locations at the Homer Transfer, McNeil Canyon Elementary School, and Diamond Ridge Emergency Services Station. KNSC recognizes KPB's priority use at these locations, including the Diamond Ridge Fire Station, and will not interfere with KPB's operations and will keep the priority user informed of trail schedules and events.

Over the past twenty years, KNSC has demonstrated a commitment to developing and maintaining a trail system that benefits a Nordic-skiers and outdoor enthusiasts found throughout our borough. Ski trails promote healthy, outdoor exercise during the short days of winter. Events encourage positive social interactions and bring economic activity to the area during winter. KNSC has been dedicated to promoting Nordic skiing in the Kachemak Bay area

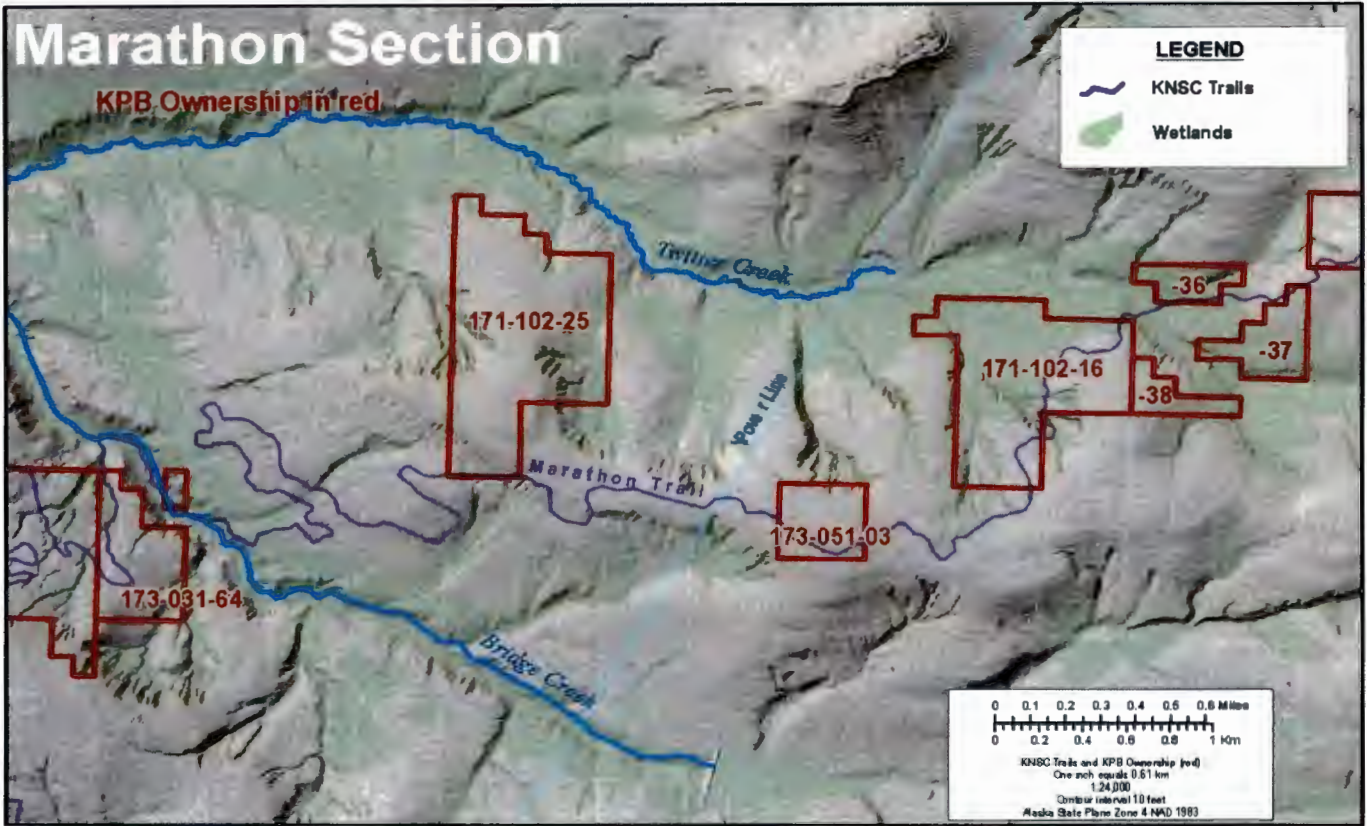
since 1986, and has maintained a steady, paid membership base of approximately 700 individuals over the past several years. If approved, our plan is to continue managing these trails in order to not only allow for more trail experiences for the citizens of the borough, but to increase the number of varied activities on these trail systems.

DIAGRAMS AND PHOTOS

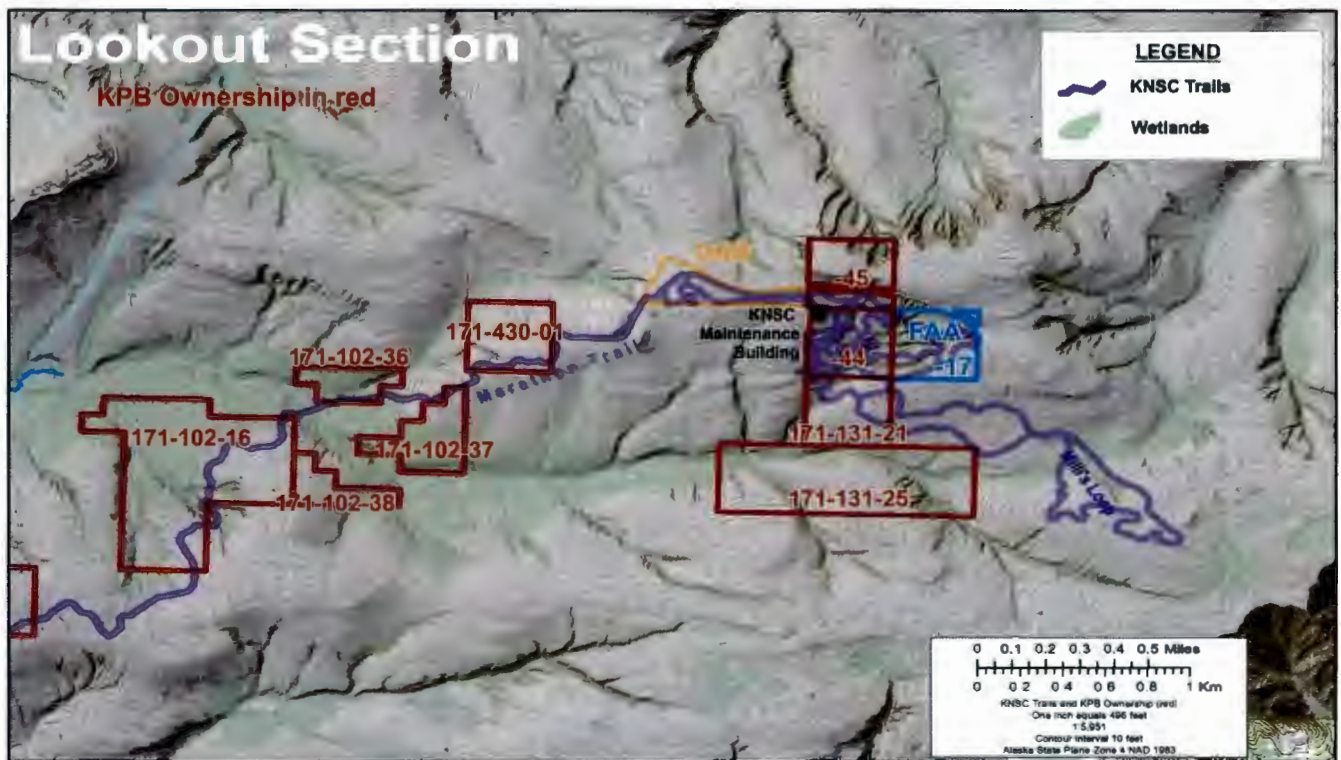
LOCATION OF TRAIL FACILITIES



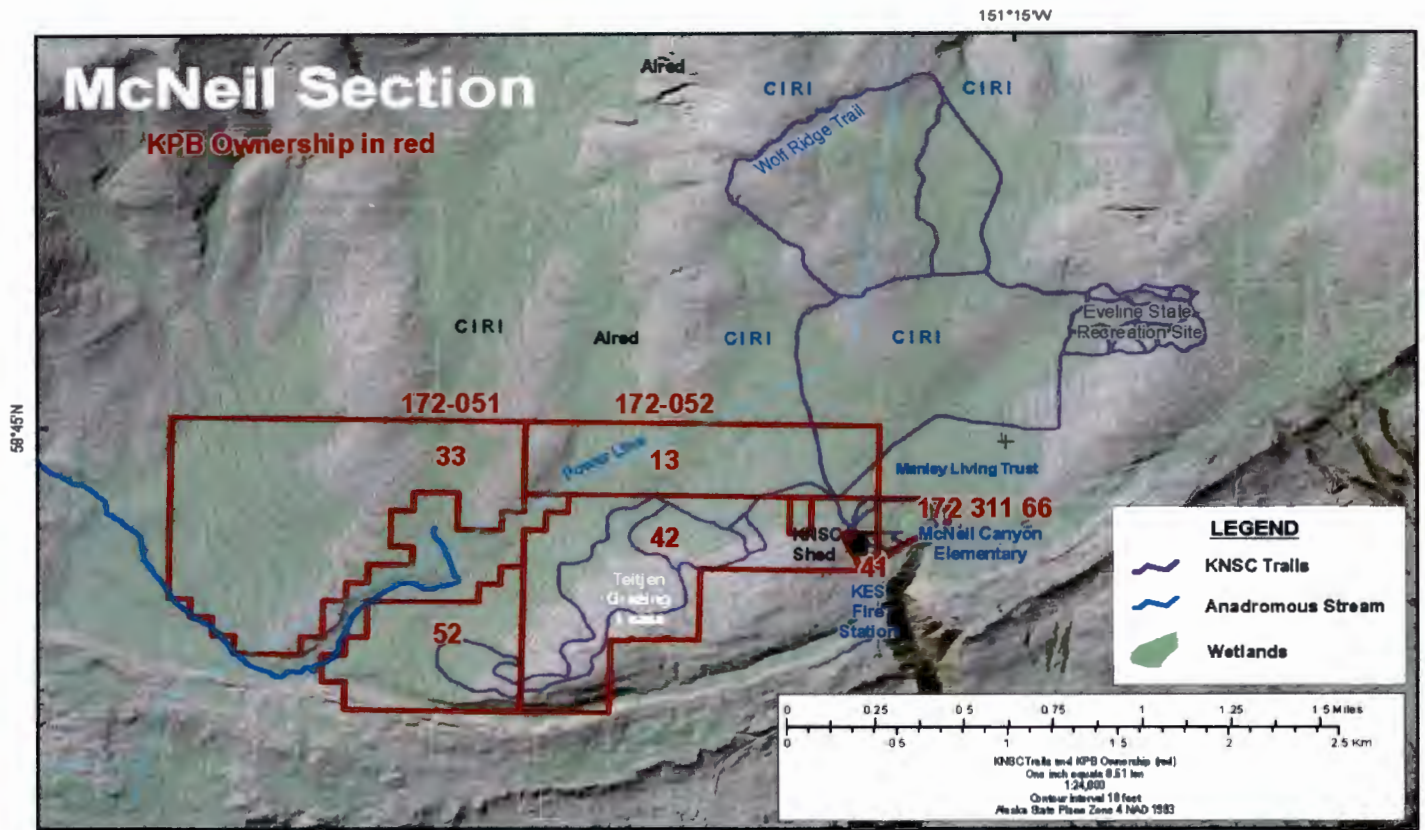
KPB parcels and KNSC trails in the Baycrest Trail system vicinity.



PB parcels and KNSC trails along the Marathon Connector Trail (Anadromous streams in blue as on previous maps)



PB parcels and KNSC trails in the Lookout Mountain Recreation Area and vicinity.



2B parcels and KNSC trails in the McNeil Canyon area

PUBLISHED RULES & REGULATIONS

The following rules and regulations will be posted by sign at trail access points and on the web at: <http://kachemaknordicskiclub.org/trails/etiquette/>

General Trail Rules and Etiquette

Recognize that these trails have been created and maintained by local volunteers, your neighbors, for the primary purpose of Nordic skiing

- Respect wildlife
- No hunting or trapping along trails
- Trails are closed to motorized vehicles, bicycles, and horses (human power only)
- No littering
- Frequent users: Please join KNSC to support trail grooming and maintenance!
- HAVE FUN!

Summer Rules and Etiquette

- Dogs must be on-leash or under voice command
- Pick up after your pets!

Winter Rules and Etiquette

- All trails are closed to motorized vehicles (except for authorized maintenance activity), bikes, walking/hiking, skijoring, and dog mushing
- Move to the side of the trail to allow grooming equipment to pass, and when stopped
- Please try to avoid skiing at least 2 hours after grooming, especially in soft conditions, to allow the trails to become firm
- Downhill skiers have the right-of-way; be mindful of where you are in relation to potentially approaching fast downhill skiers
- Where dogs are permitted, please, train your dog to behave on a public trail, and only one dog per skier is allowed
- Use bags to PACK OUT PET WASTE! Don't expect the volunteer groomers to pick it up for you!

Specific policies for trails by area:

BAYCREST TRAILS:

- No dogs on Sunset Loop, Far Side, and Awesome to Midway. One dog per skier is allowed on the remainder of the trail system.
- No snowshoes on upper Baycrest Trails. Snowshoeing is allowed off-trails and on separated, Marked trails at Lower Baycrest

MCNEIL TRAILS:

- One dog per skier is allowed
- Snowshoeing is allowed off-trails, to the sides of groomed ski trails, and on separate marked trails only

LOOKOUT MOUNTAIN RECREATION AREA AND LOOKOUT TRAILS:

- No dogs or snowshoes allowed on groomed ski trails
- All trails are open to Nordic skiing only

SCHEDULE OF EVENTS

Current event schedules can be found at:

<http://kachemaknordicskiclub.org/events-calendar/>

RESERVATION SYSTEM

Current information for reserving Trail Facilities for group events can be found at:

<http://kachemaknordicskiclub.org/events-information/>

FEES

There are no fees proposed for any Trail Facilities at this time.

Note: KNSC does have membership fees and provides timing services for fees, neither of which are required for trail use and are independent of the CTMA.

ANNUAL REPORT

The following measurements will guide annual reports submitted by April 15th each year, summarizing trail management from the period of April 1 to March 31st.

TRAIL FACILITIES- DEVELOPMENT INVENTORY:

Kilometers of Main Trail
Number of Trailheads (Access Points)
Number of Parking Spaces

USE:

Number of School Events
Number of Community Events
Summer Estimated Users per Day
Winter Estimated Users per Day
Estimated Total Users per Year

MAINTENANCE ACTIVITIES:

Number of Grooming Events
Vegetation Treatment or Other Work Days
Trash Removals

MANAGEMENT ACTIVITIES:

Grant Funds Used
Grant Funds Applied For
Number of Signs

CURRENT CONTACTS:

Trail Management Plan Administrator

FEES:

None

APPROVAL AND EFFECTIVE DATE: Original TMP Approved and Effective on Date of CTMA