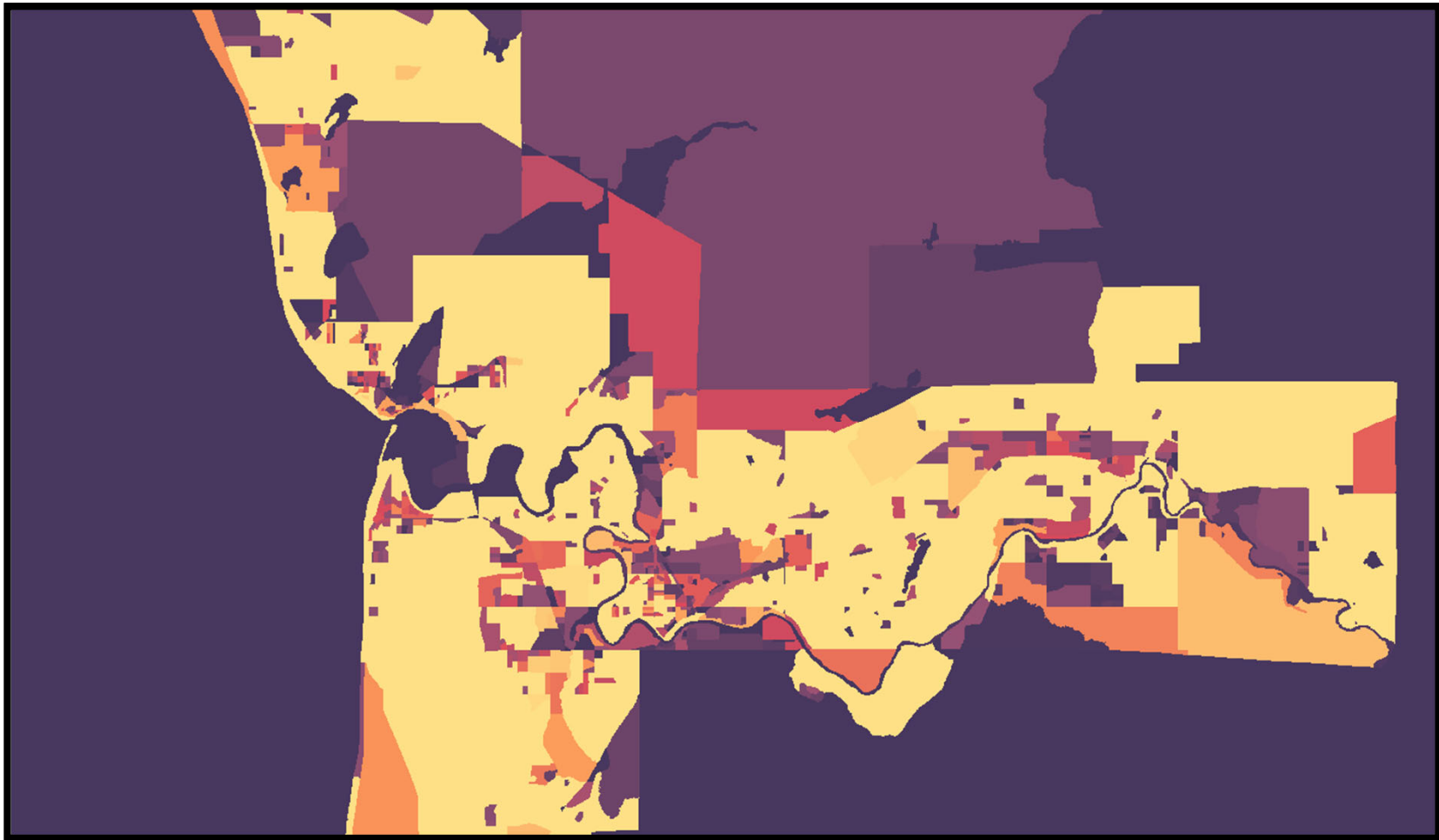




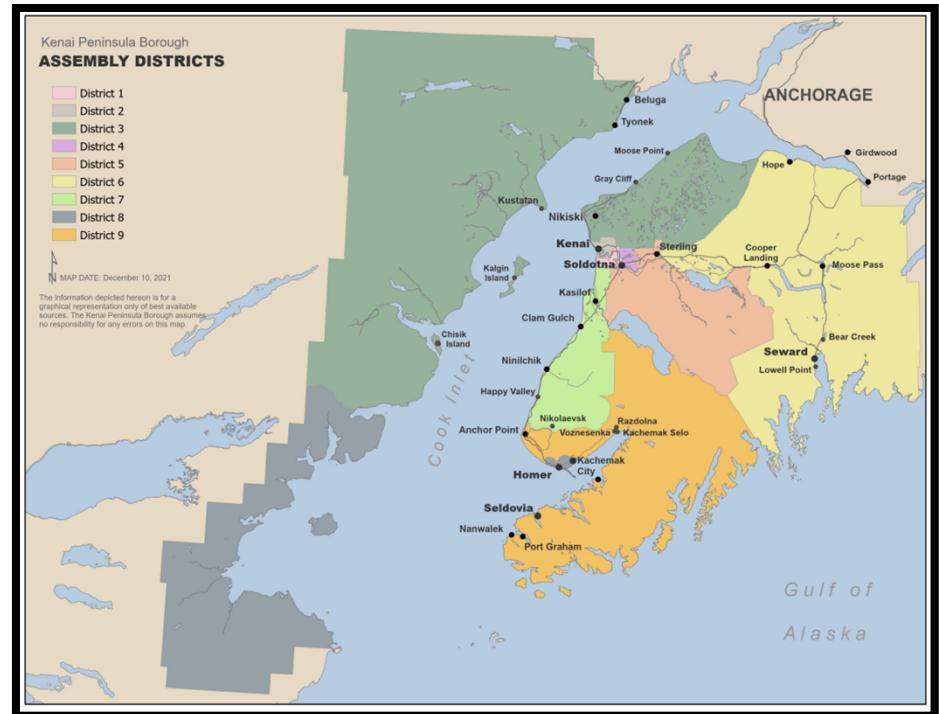
Kenai Peninsula Borough Redistricting 2022

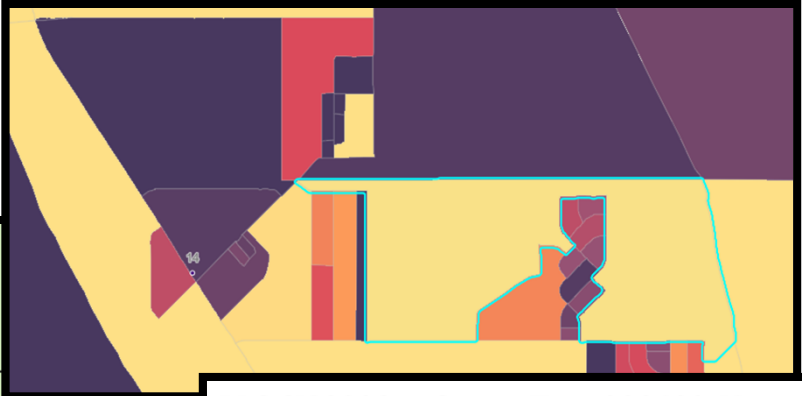
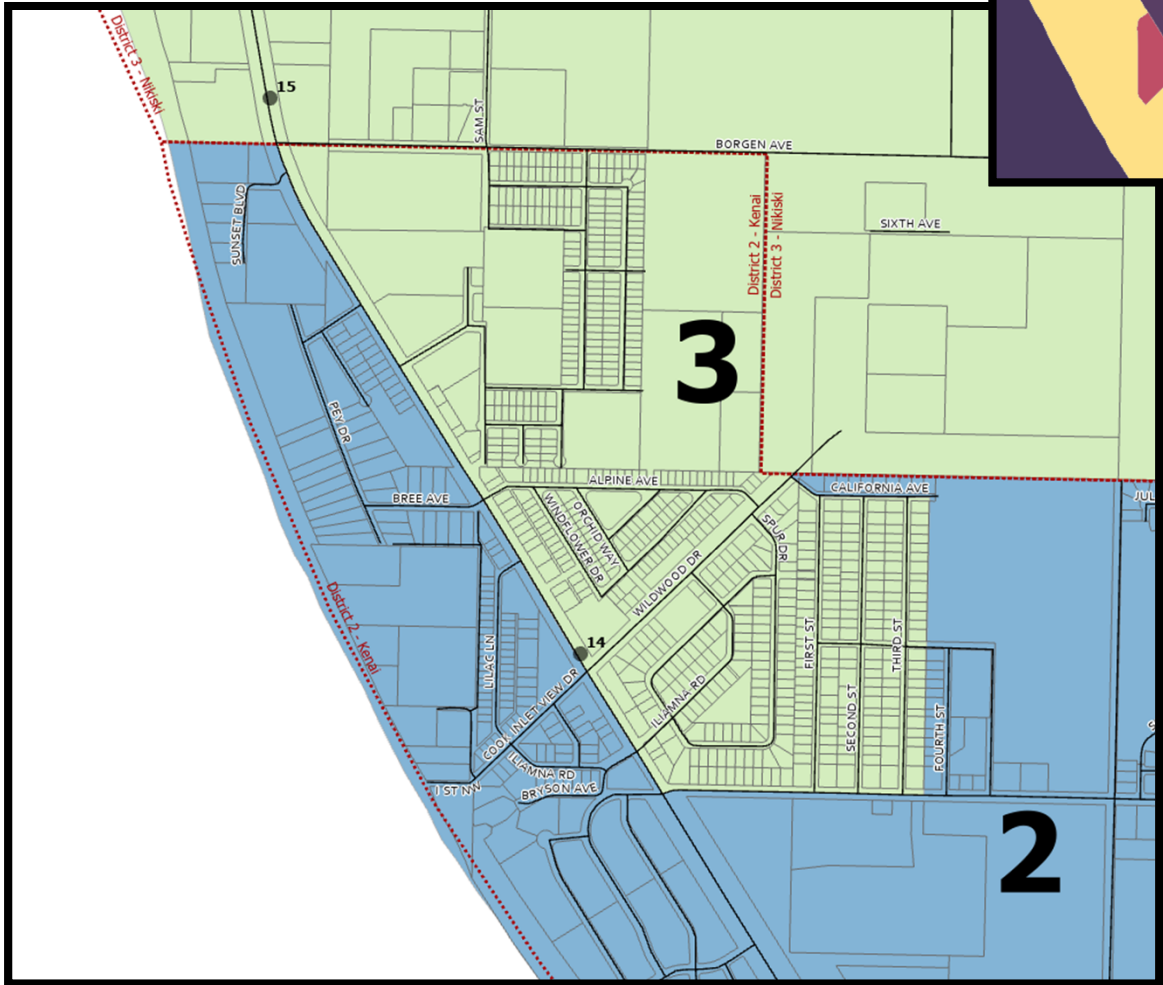


Population by Current Assembly District

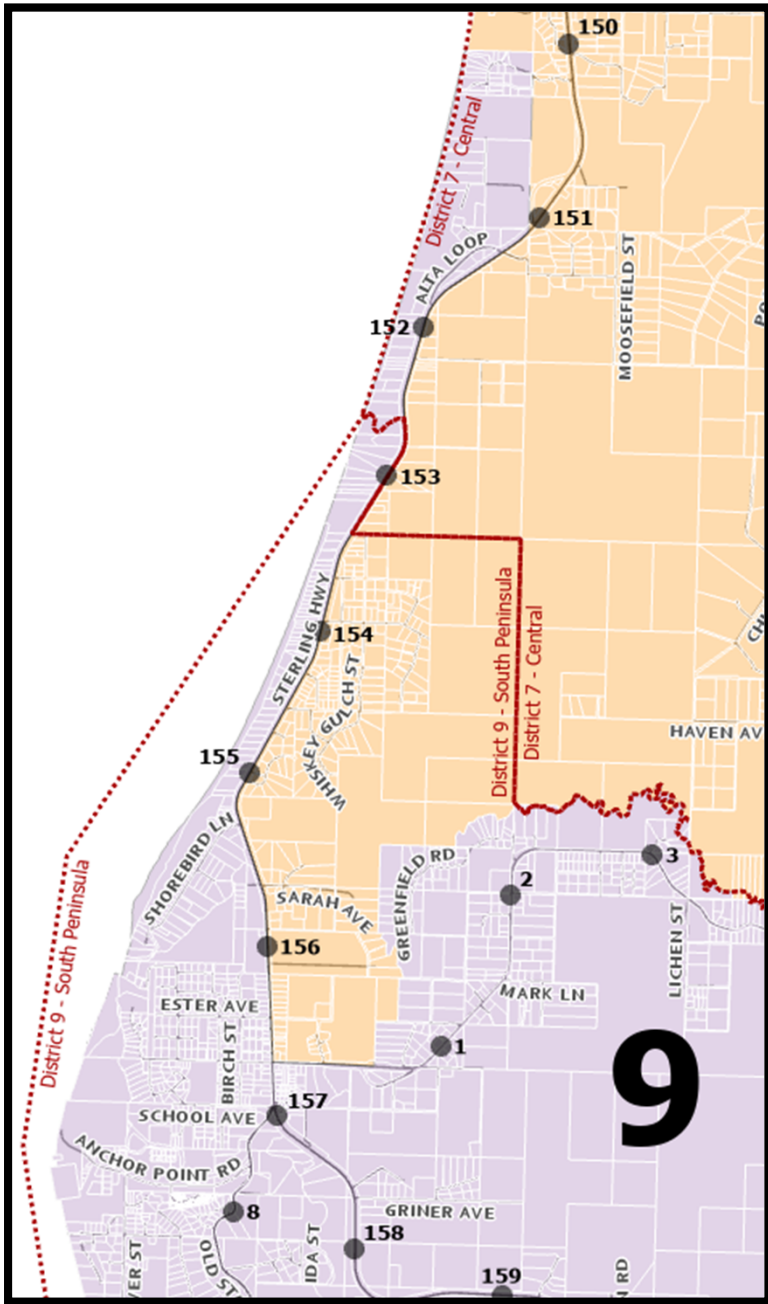
	Total Population	Target Population	Deviation	Deviation %
District 1	6,490	6,533	-43	-0.66
District 2	6,604	6,533	71	1.09
District 3	5,915	6,533	-618	-9.46
District 4	6,795	6,533	262	4.01
District 5	6,722	6,533	189	2.89
District 6	6,662	6,533	129	1.97
District 7	6,600	6,533	67	1.03
District 8	6,504	6,533	-29	-0.44
District 9	6,507	6,533	-26	-0.4

Total Population:	58,799
Mean Target Population:	6,533
Mean Deviation:	159
Mean Percent Deviation:	2.44
Largest Positive Deviation:	262
Largest Negative Deviation:	-618
Overall Range in Deviation:	880
Overall Range in Deviation Percentage:	13.47



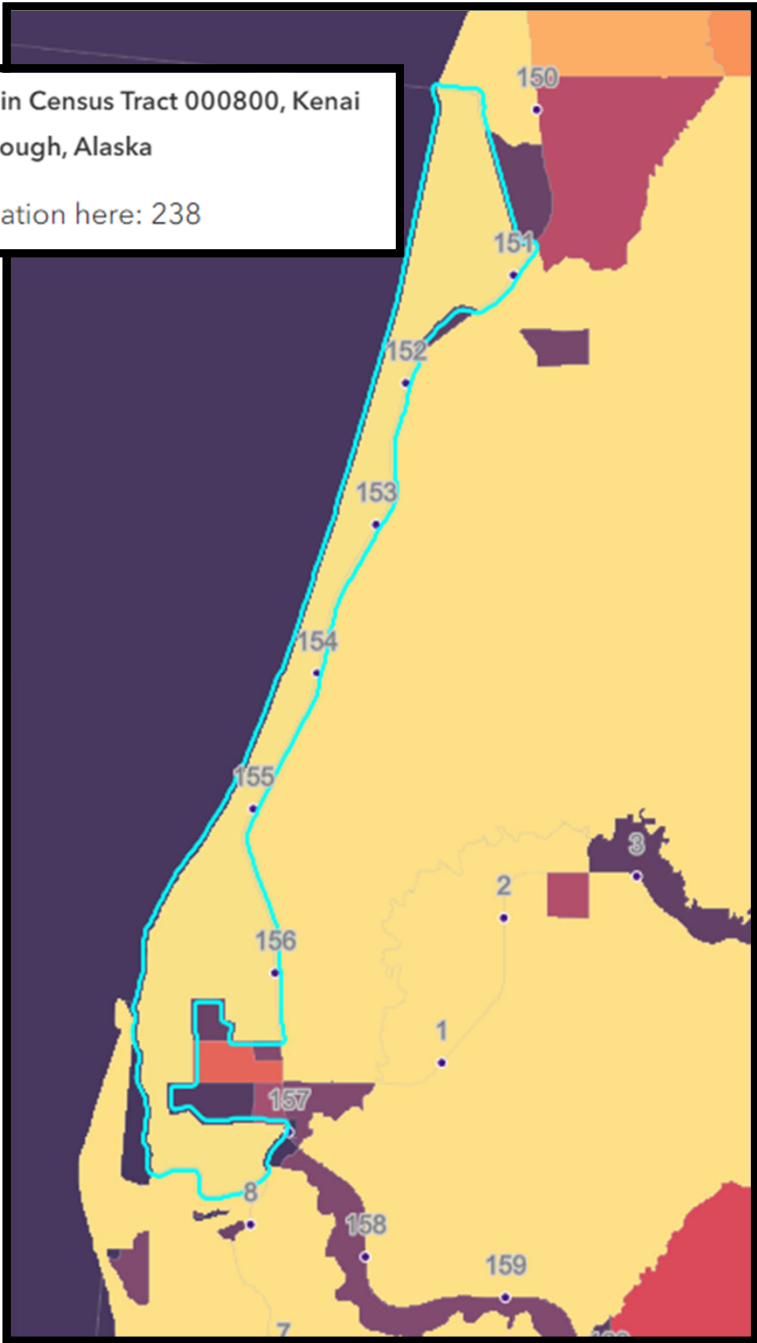


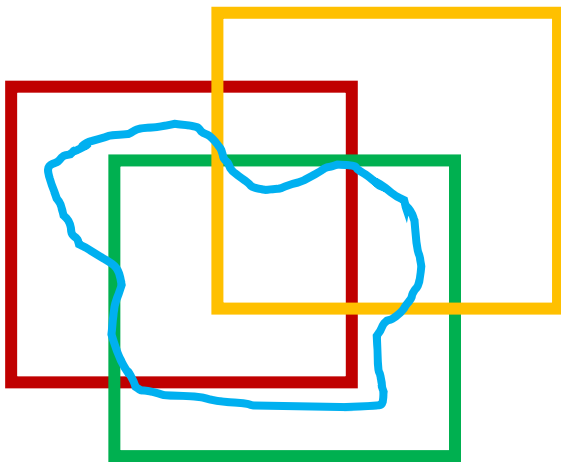
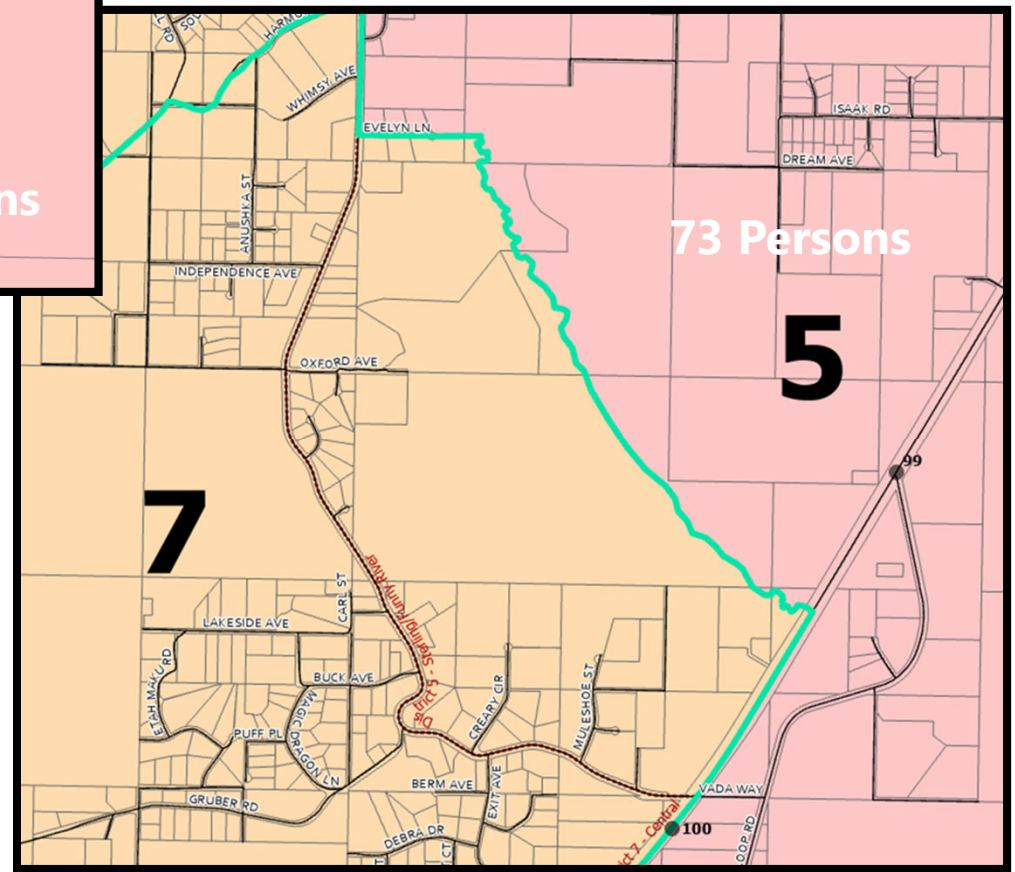
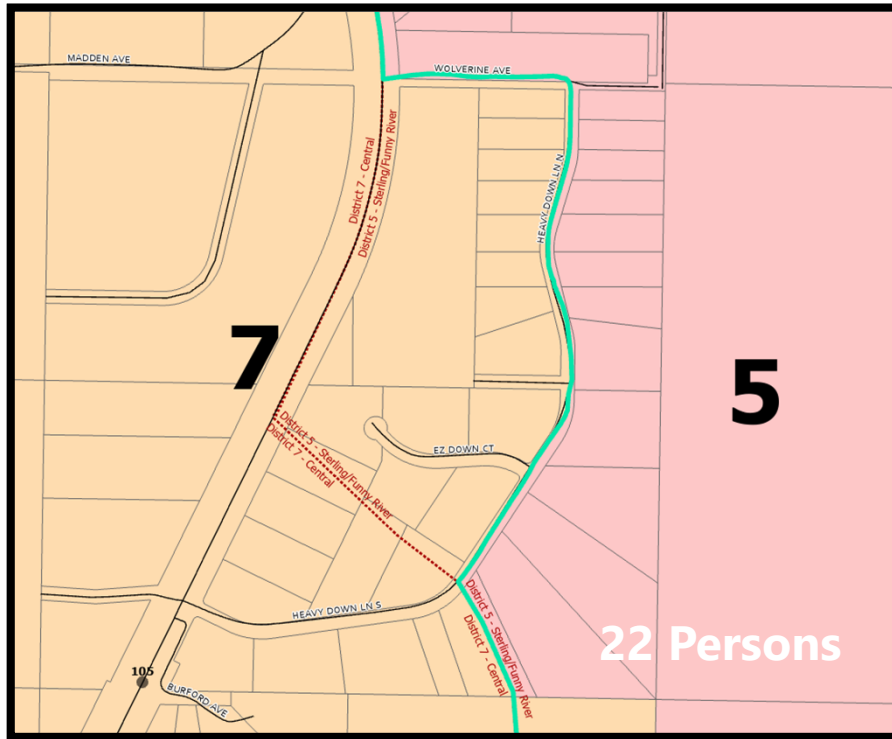
BLOCK 2000 in Census Tract 000600, Kenai
Peninsula Borough, Alaska
Total population here: 234

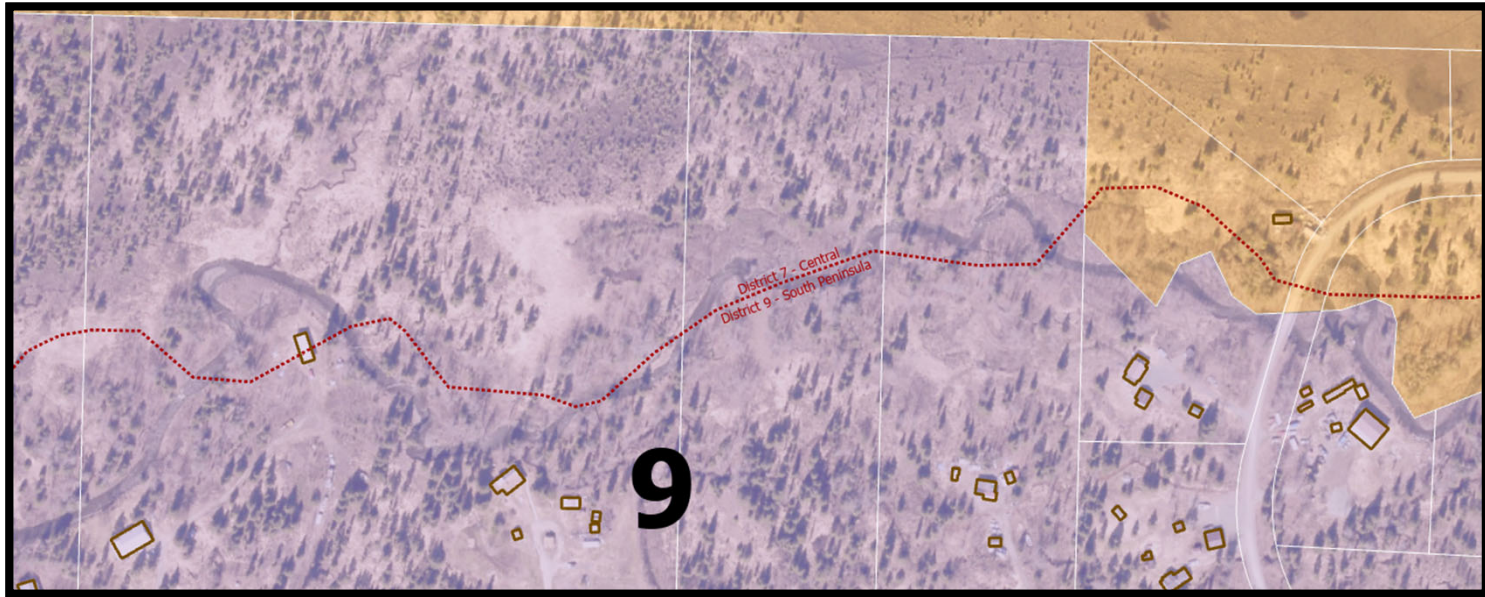


BLOCK 3006 in Census Tract 000800, Kenai Peninsula Borough, Alaska

Total population here: 238







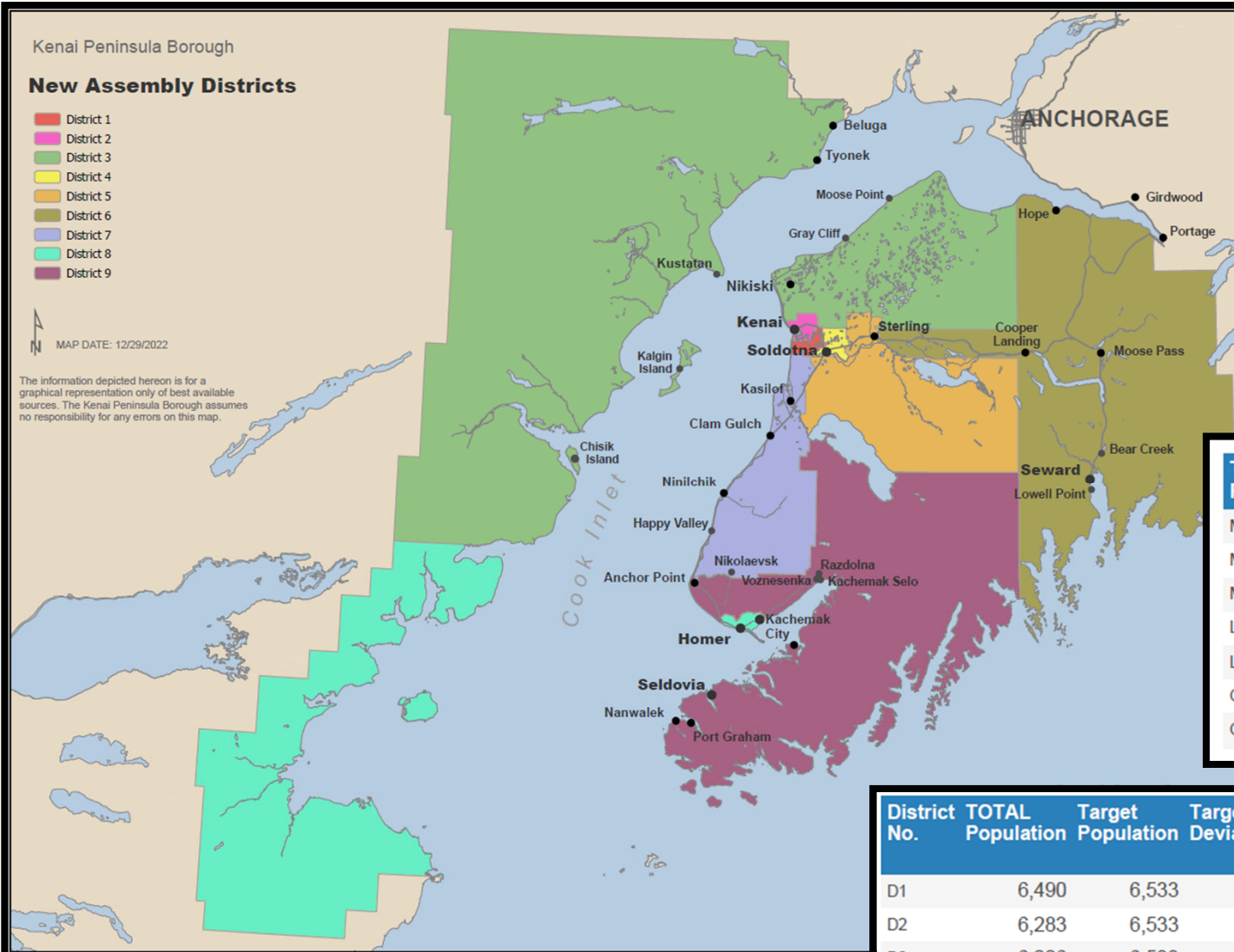
Kenai Peninsula Borough

New Assembly Districts

- District 1
- District 2
- District 3
- District 4
- District 5
- District 6
- District 7
- District 8
- District 9

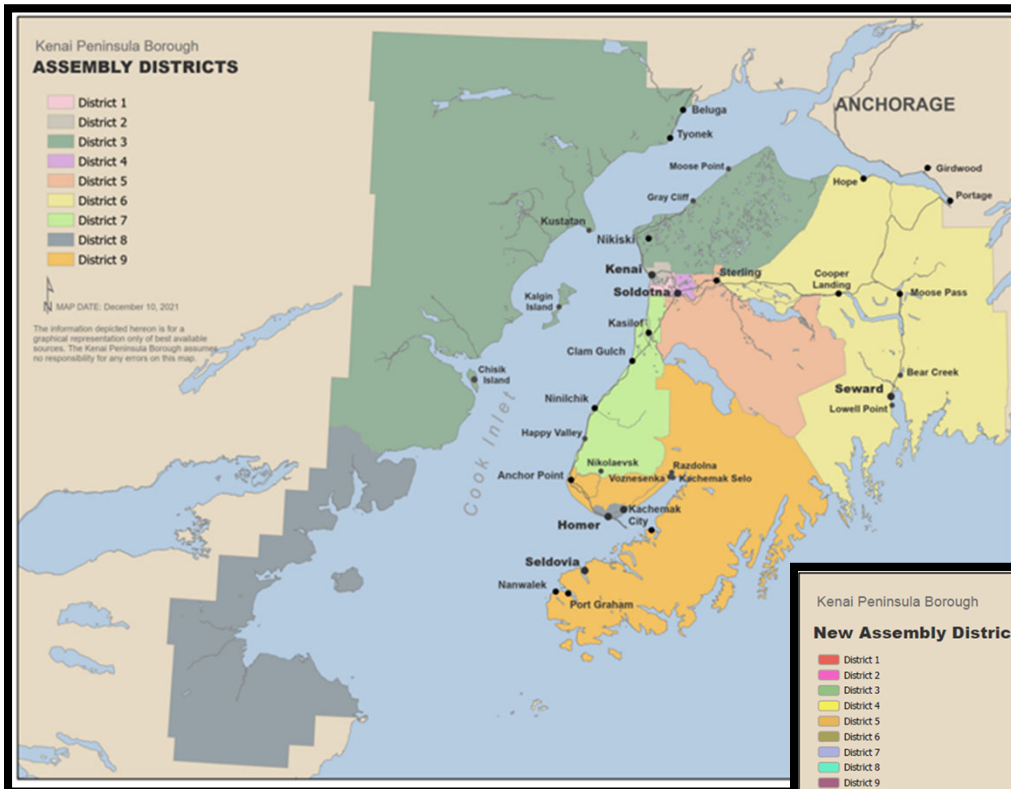
MAP DATE: 12/29/2022

The information depicted hereon is for a graphical representation only of best available sources. The Kenai Peninsula Borough assumes no responsibility for any errors on this map.



TOTAL Population:	58,799
Mean Target Population:	6,533
Mean Deviation:	144
Mean Percent Deviation:	2.21
Largest Positive Deviation:	262
Largest Negative Deviation:	-307
Overall Range in Deviation:	569
Overall Range in Deviation Percentage:	8.71

District No.	TOTAL Population	Target Population	Target Deviation	Target Deviation (%)	Total
D1	6,490	6,533	-43	-0.66	6,490
D2	6,283	6,533	-250	-3.83	6,283
D3	6,226	6,533	-307	-4.70	6,226
D4	6,795	6,533	262	4.01	6,795
D5	6,637	6,533	104	1.59	6,637
D6	6,662	6,533	129	1.97	6,662
D7	6,688	6,533	155	2.37	6,688
D8	6,504	6,533	-29	-0.44	6,504
D9	6,514	6,533	-19	-0.29	6,514



Total Population:	58,799
Mean Target Population:	6,533
Mean Deviation:	159
Mean Percent Deviation:	2.44
Largest Positive Deviation:	262
Largest Negative Deviation:	-618
Overall Range in Deviation:	880
Overall Range in Deviation Percentage:	13.47

TOTAL Population:	58,799
Mean Target Population:	6,533
Mean Deviation:	144
Mean Percent Deviation:	2.21
Largest Positive Deviation:	262
Largest Negative Deviation:	-307
Overall Range in Deviation:	569
Overall Range in Deviation Percentage:	8.71

