

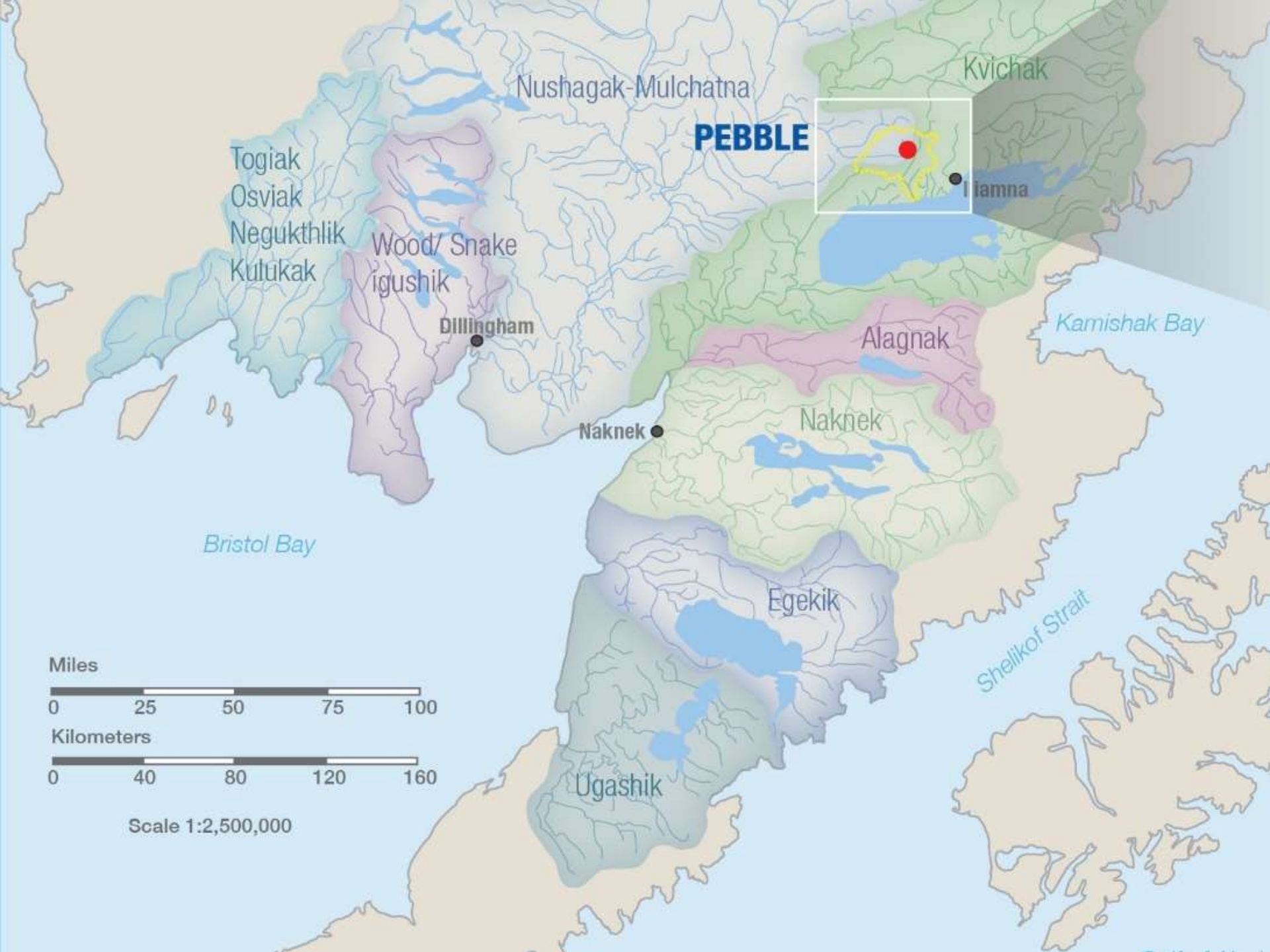


Pebble Project Update
KPB Assembly – September 17 2019
Mike Heatwole – VP Public Affairs
James Fueg – VP Permitting

- Introduction
- Short project overview
 - Anchor Point/Peninsula 2019
- Questions/Discussion

THIS IS THE PEBBLE DEPOSIT





PEBBLE

Kvichak

Iamna

Nushagak-Mulchatna

Togiak
Osviak
Negukthlik
Kulukak

Wood/Snake
Igushik

Dillingham

Naknek

Alagnak

Naknek

Kamishak Bay

Bristol Bay

Egekik

Shelikof Strait

Ugashik

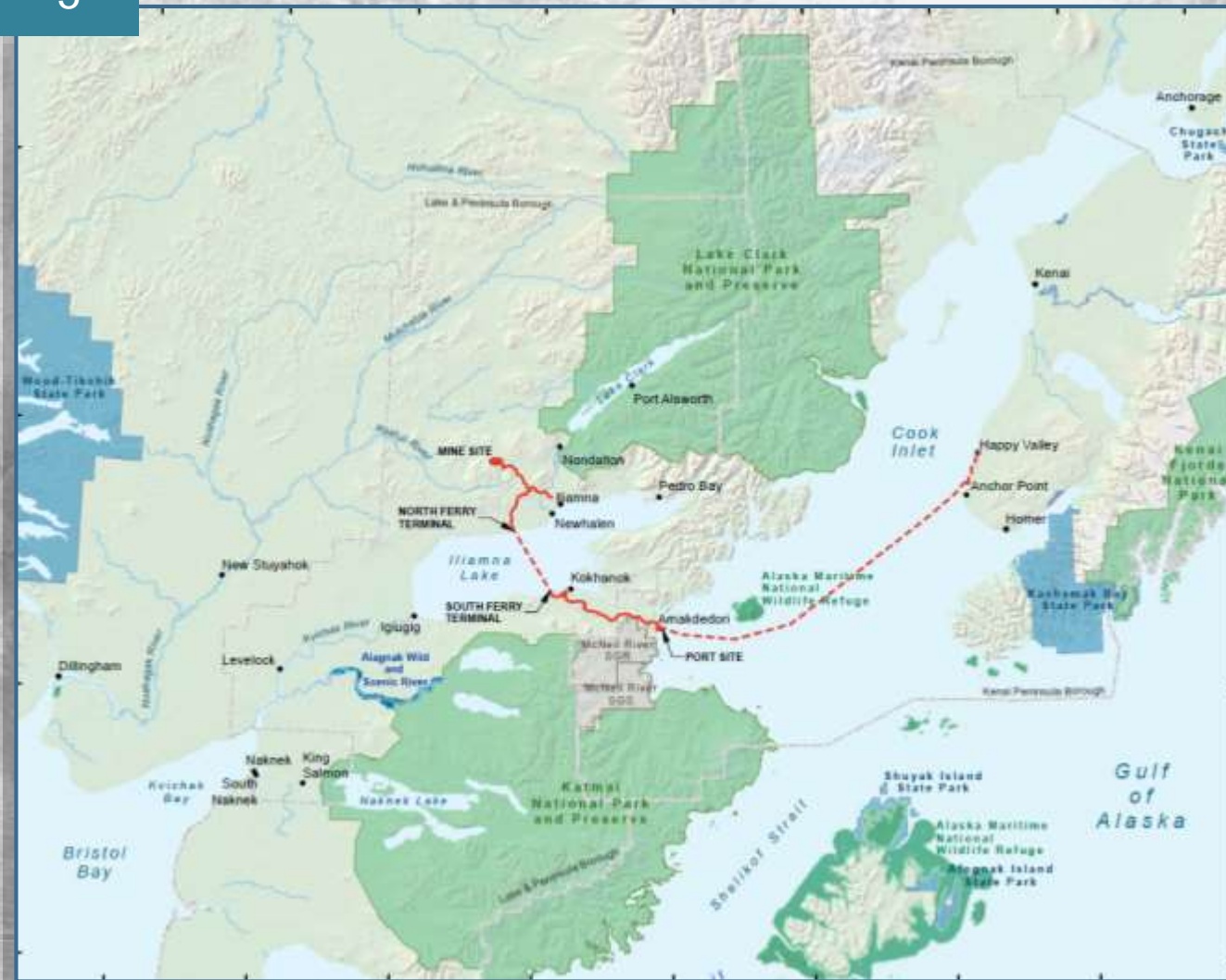
Miles



Kilometers



Scale 1:2,500,000



- **Smaller, compact footprint**
- **No cyanide**
- **Ferry crossing**
- **Enhanced environmental safeguards**

PEBBLE PROJECT DESCRIPTION

EIS Overview

- **US Army Corps of Engineers is EIS lead agency**
 - AECOM is the third party contractor
 - Bureau of Safety and Environmental Enforcement and US Coast Guard are action agencies
- **Cooperating agencies include**
 - Federal - Environmental Protection Agency, US Fish & Wildlife Service, National Park Service, Pipeline & Hazardous Materials Agency, Advisory Council on Historic Preservation
 - State - Departments of Natural Resources, Environmental Conservation, Fish & Game, and others
 - Local - Lake & Peninsula Borough
 - Tribal - Curyang, Nondalton
- **More than 30 tribes are engaged in Government to Government consultation**
- **USACE Schedule**
 - Draft EIS released February 2019; 120 day public comment period
 - Final EIS Early 2020

EIS Co-operating Agencies



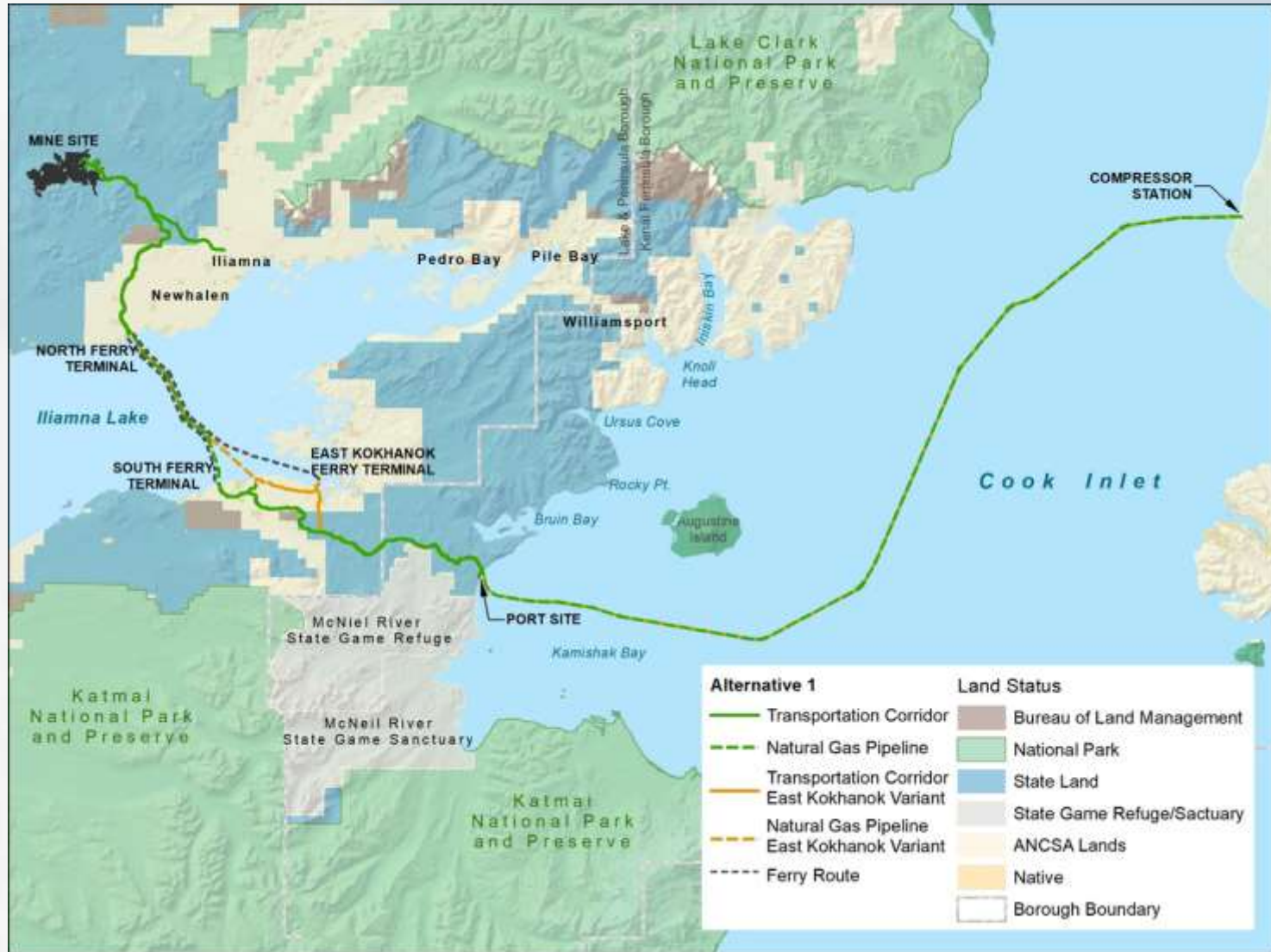
US Army Corps
of Engineers®



Nondalton Tribal Council



Draft EIS Alternative 1



Amakdedori Port

- **Concentrate shipping**

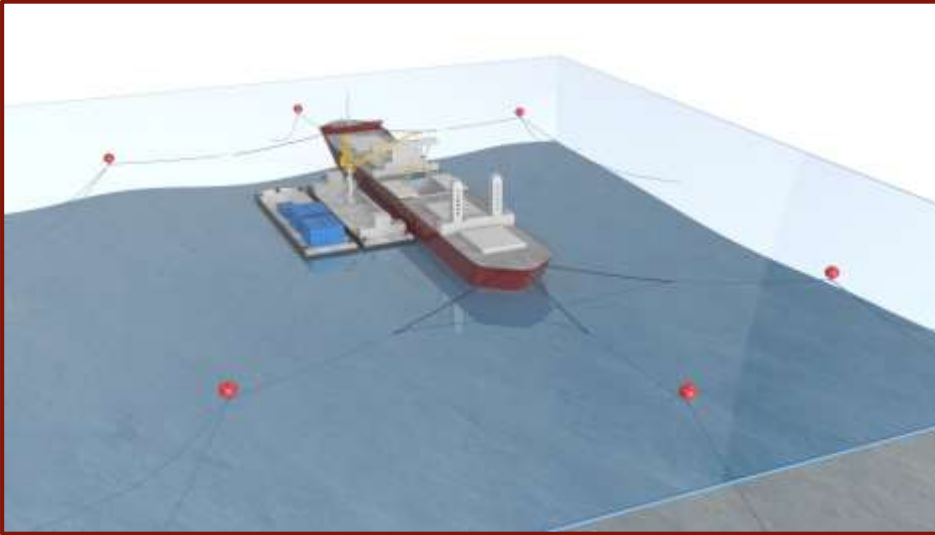
- Container lightering using barges
- Approximately 10 barge trips to load a bulk carrier over 4-5 days
- Approximately 27 bulk carriers annually

- **Freight and fuel**

- Marine line haul barges will bring freight and fuel and supplies to the dock
- Port will receive approximately 33 barges per year



Container Lightering



Bears and wildlife

- Wildlife management plans for road and port
 - Appx. 1 truck every 20 minutes – traffic density not high enough to present a barrier to wildlife
- Multiple design features and procedures to protect personnel and wildlife
- Port facility appx 12 miles from McNeil River behind Chenik Head



Spring/Summer 2019

LOWER PENINSULA WORK

Anchor Point Geo Tech Drilling

- 2-5 day focused drilling program
 - 2 holes: road edge and below the bluff
- Collected geotechnical information for proposed pipeline crossing
- ~ \$20K to direct economy via housing and accommodations





FIGURE 1.0
Kenai Work Area

-  Proposed Drill Collar
-  Compressor Station & Access Road
-  Proposed Pipeline
-  State Highway
-  Local Road
-  Sections
-  Parcels



Scale 1:3,500

Alaska State Plane Zone 4 (Globe AER)
NAD83 North American Datum

| | |
|-------------------------|----------------|
| File: KLP_000001_10.dwg | Date: 11/02/11 |
| Sheet: 1 | Sheet: 001 |

Compressor station rendering



Additional PLP Peninsula Activities

- Spring/Summer 2019 marine studies
 - Focus on pipeline crossing
- Based out of Homer
 - Leased several vessels for geophysical studies of the sea bed
- ~ 4 months activity
 - Leased 4 local vessels with 2-3 working at a time
 - Crew of 52 with about 20 from Homer
 - Appx \$1.5 million direct to the local economy

Questions?



Peninsula Contact

- Jill Schaefer
 - KPOutreach@pebblepartnership.com