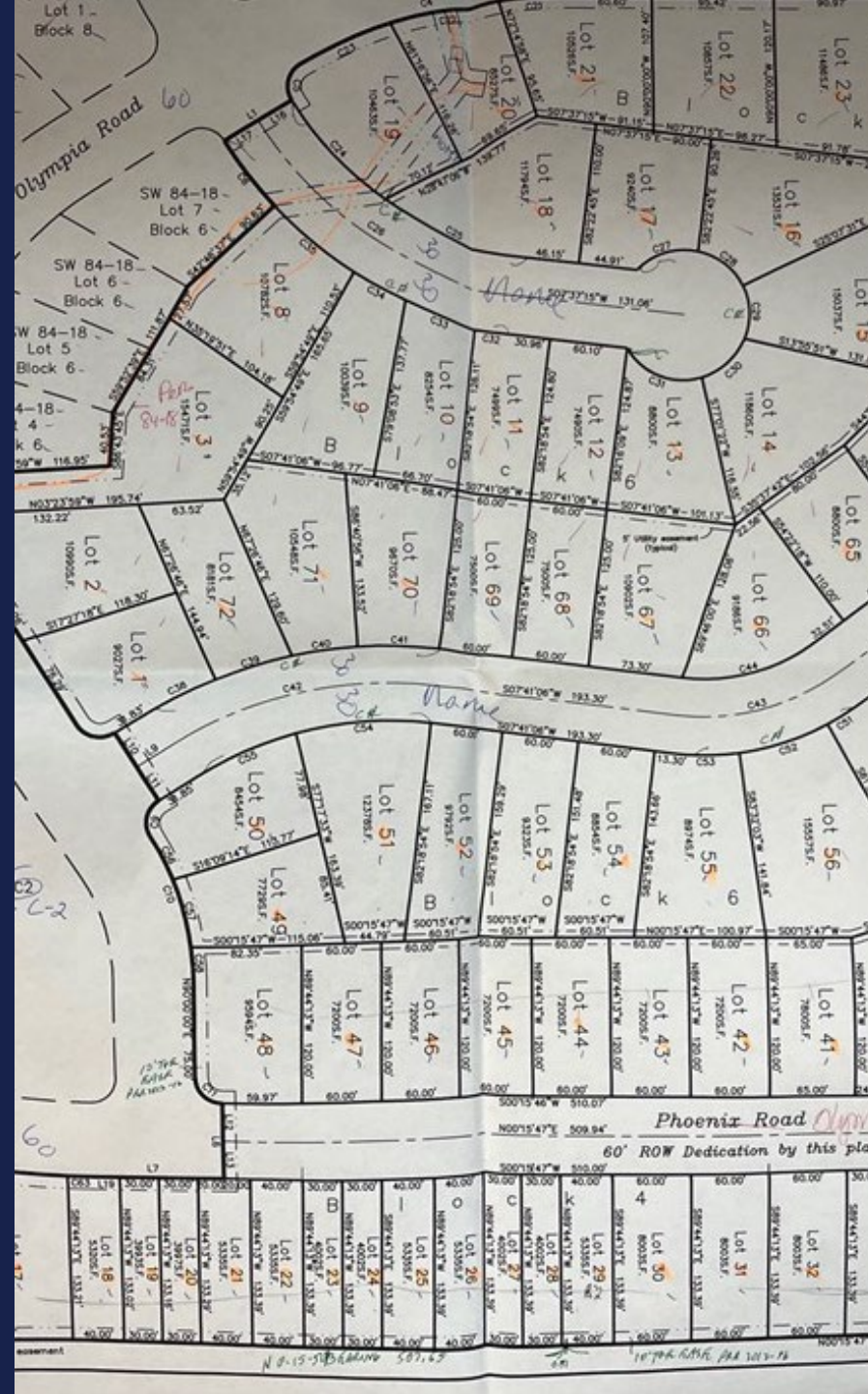


Planning Department

Robert Ruffner



Department Divisions

- Planning Administration/ Platting Division
- Geographic Information Systems (GIS)
- Donald E. Gilman River Center
- Land Management*

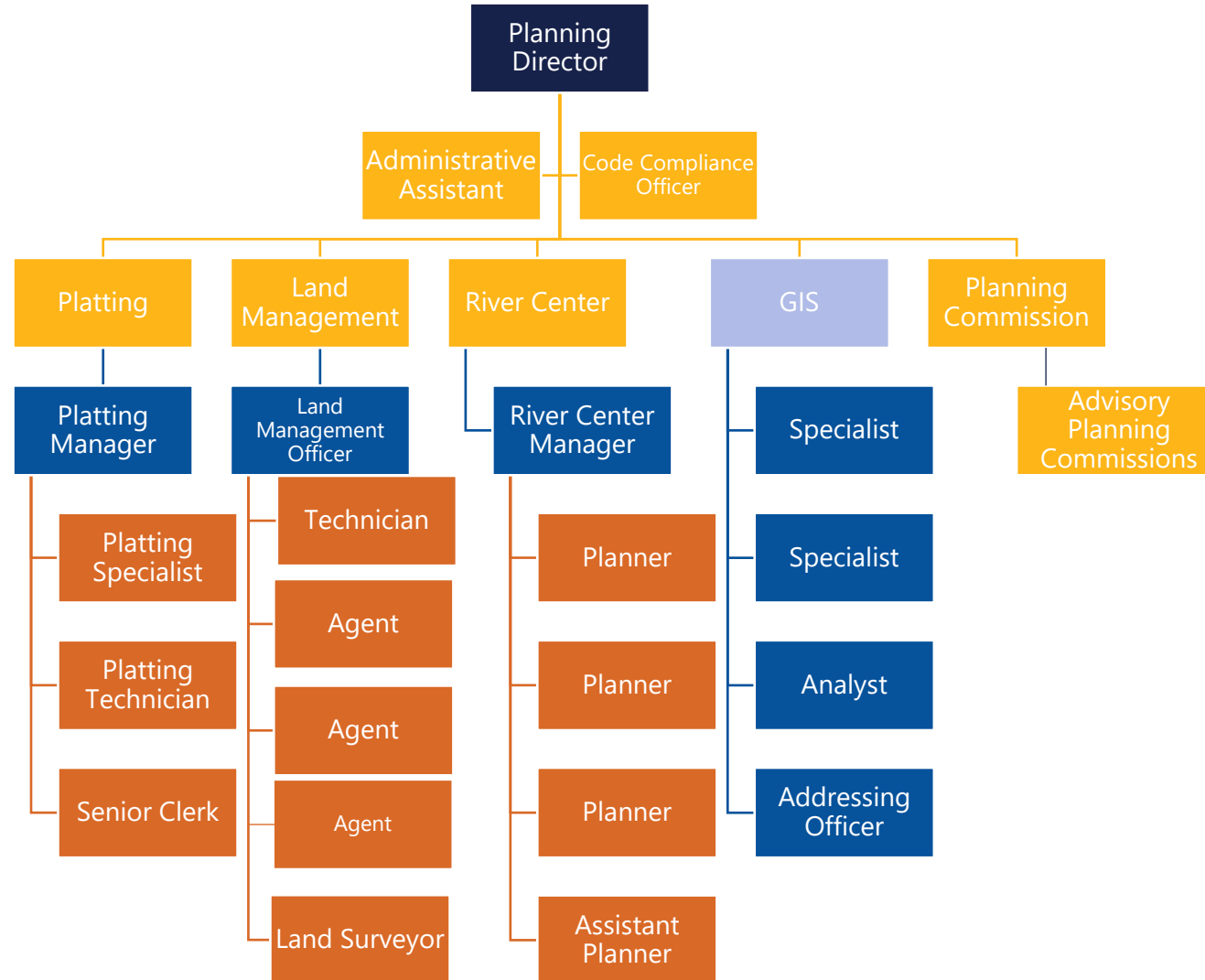
Land management has a separate Fund referred to as 250; All other divisions come from Fund 100. This focuses solely on Fund 100 and a separate presentation from Land Management will follow:

Bottom Line -

FY 24 Org.	FY 25 proposed	Difference \$	Difference %
\$ 2,992,679	\$ 3,292,689	\$ 300,010	10.02%



Planning Department Organizational Chart





Planning Administration

FY2025 Objectives:

- Migration of platting data into sharepoint
- Improve permitting and tracking software with an eye to transparency
- Work with municipal partners on community planning
- Finalize migration of PC into Granicus software

FY 2024 Accomplishments

- Material site committee – 21.29 re-write
- Secured outside grant funds for
 - Transportation planning (~\$1MM)
 - Spruce BB mitigation(\$1.5MM)
 - Big Eddy drainage plan(\$43k)
- Kbeach Drainage response w/ multiple departments



Platting Division



Responsible for the orderly development and growth of our 2nd Class Borough. Powers derived from and defined by AS 29

We project steady state of ~175 Platting and planning reports in FY 25

GIS Division



FY 2024 Major Accomplishments

- Successfully completed the upgrade of KPB enterprises GIS system.
- Developed several internal and public-facing applications, viewers, webpages, field applications and tools.
- Supported KPB dispatch centers and emergency responders with CAD and mobile response map updates, routing and addressing improvements.



FY 2025 Budget Highlights

- Staffing
- Imagery

Major Ongoing Objectives

- Achieving control standards for parcel data via control survey and parcel fabric.
- Data preparation for transition to Next Generation 911 standards.
- Ongoing development of applications to improve the efficiencies of KPB departments and divisions



River Center Division

The Donald E. Gilman River Center is a multi-agency permitting, information, and education center.

KPB Management Programs:

- Floodplain
- Habitat Protection District
- Material Sites
- Local Option Zoning
- Advisory Planning Commissions





River Center Division

Major Long-Term Issues & Concerns

- Federal, state, and local agencies are facing financial and staffing hardships making it difficult to continue to provide reliable resource management services to constituents.
- The River Center will continue to facilitate the multi-agency mission by working closely with outside resource agencies to ensure the public's needs are met.
- Final regulatory maps for Kenai River (ongoing)
- Management & support of diverse APC's
- Management of Local Option Zoning Districts

FY 2024 Accomplishments

- Increased collaboration with agencies and organizations on issues including bluff erosion, salmon and watershed research useful for land management and RC resources.
- Achieved a greater level of community outreach through permitting and public events.
- Installed a rain garden using ACWA grant to showcase low-impact developments & how to reduce pollution.
- Responded to a significant flood on the Kenai River in September 2023 providing supportive services to the public and Incident Management Team.
- Continued working with FEMA toward adoption of new regulatory floodplain maps for the Kenai River
- Obtained live flood-inundation maps of the Kenai River
- Created permit and complaint tracking system for Material Sites
- Preliminary award of National Fish Habitat Partnership grant



River Center Division

FY2025 Objectives:

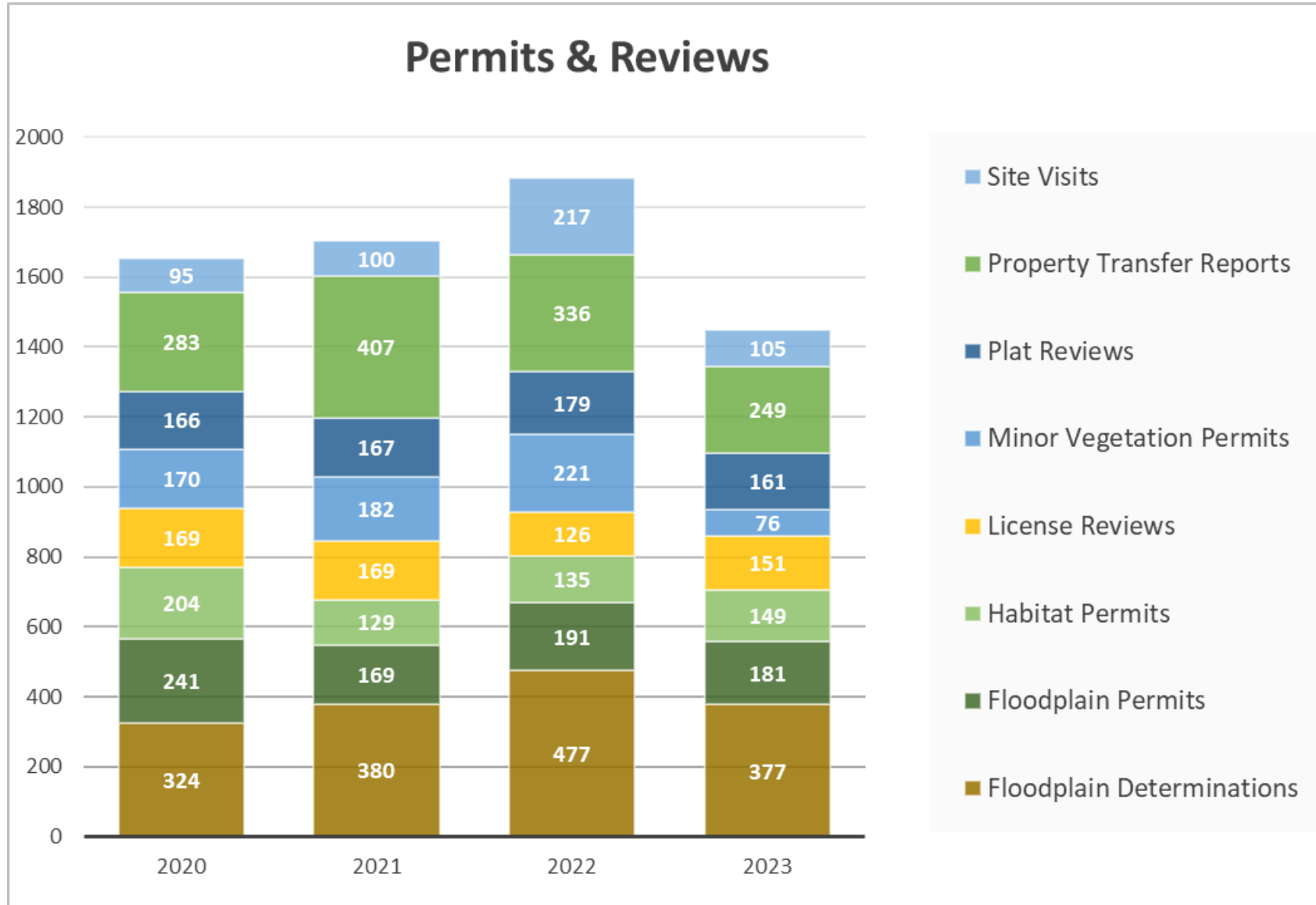
- Engage stakeholders regarding Borough-managed streams, identify new streams added by ADFG, and identify potential solutions that will continue protecting riparian habitat
- Amend KPB 21.18's regulatory waterbody list by adopting the additions/deletions from the *ADFG Anadromous Waters Catalog*
- Complete the audit of existing material sites, and implement a community rollout to prepare for the new ordinance to take effect
- Amend KPB 21.06 Floodplain Management to adopt the new regulatory floodplain maps of the Kenai River

FY 2025 Budget Highlights:

- Contractual: engineering review of no-rise analysis
- Postage: mailouts for new regulatory floodplain maps & anadromous waterbodies
- Transport/Subsistence: increase reflects increased need for site visits, and required trainings and conferences
- Capital Projects:
 - Roof replacement (\$490K)
 - Handicap door installation (\$154K)

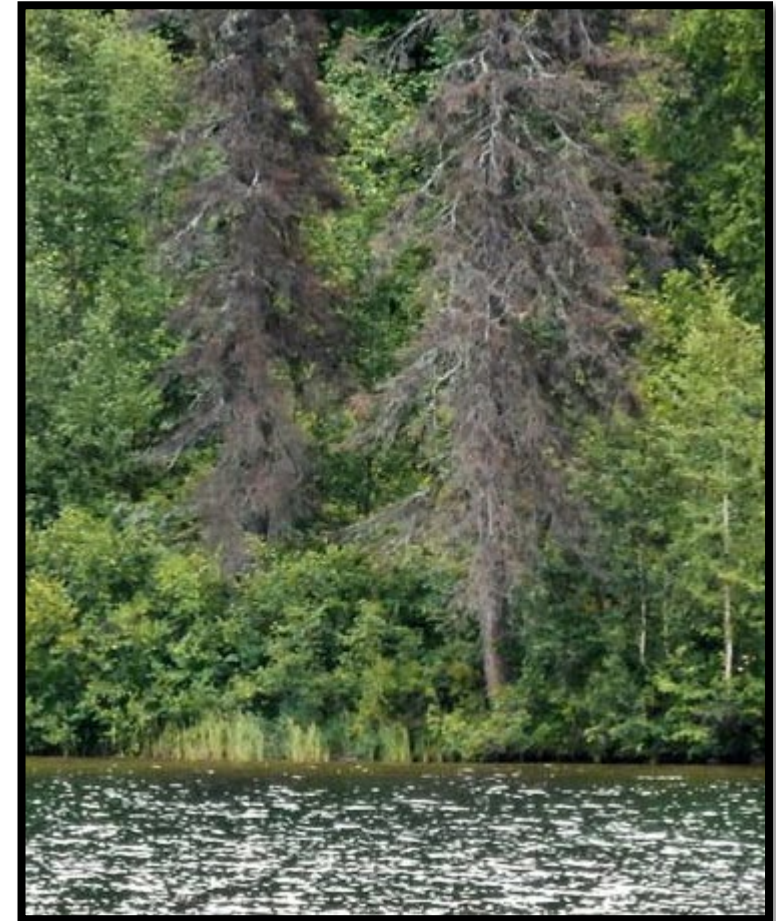


River Center Division





River Center Division



Thank you

Questions?

