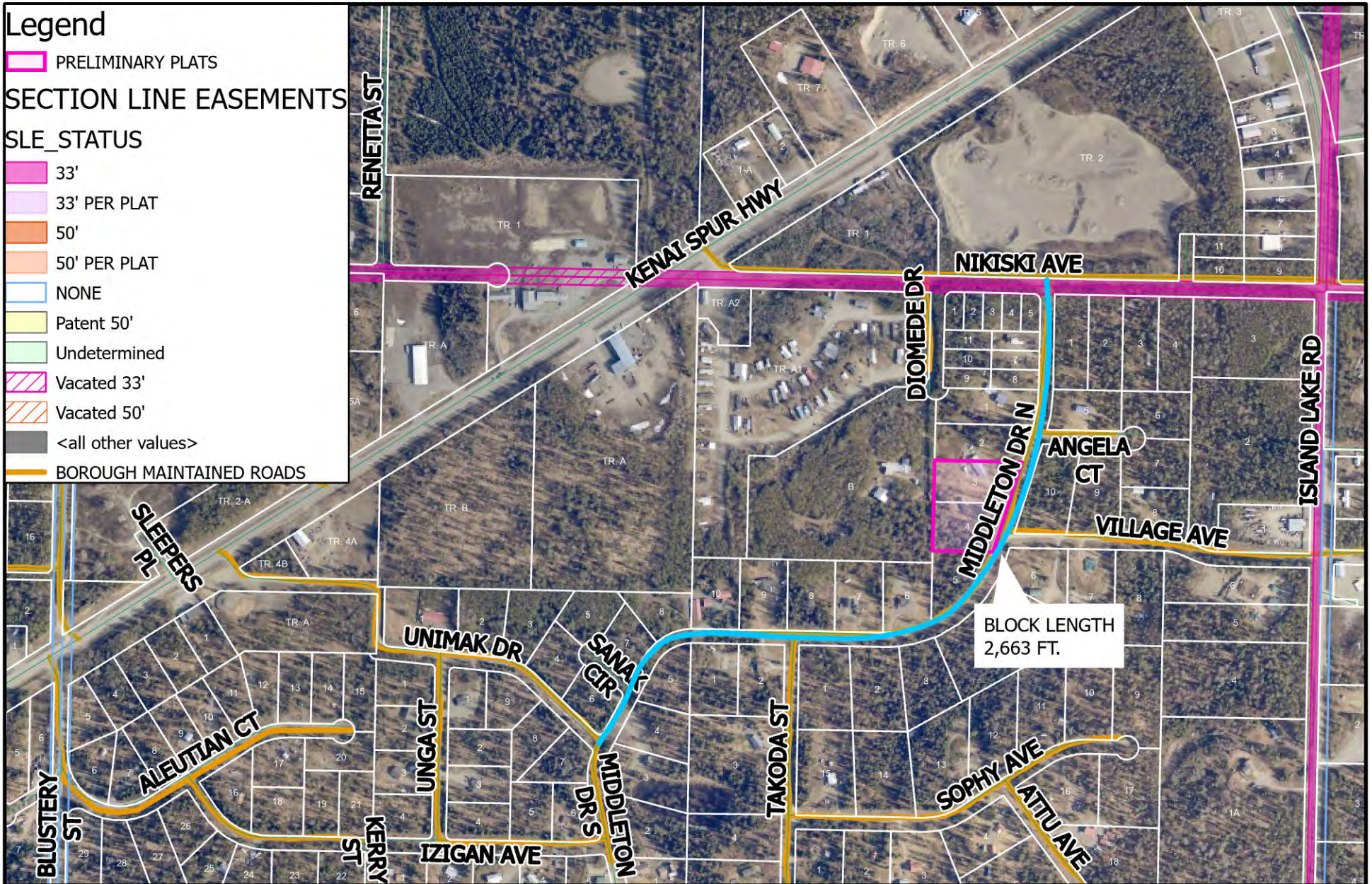
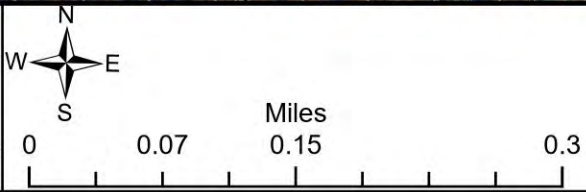


Legend

- PRELIMINARY PLATS
- SECTION LINE EASEMENTS**
- SLE_STATUS**
- 33'
- 33' PER PLAT
- 50'
- 50' PER PLAT
- NONE
- Patent 50'
- Undetermined
- Vacated 33'
- Vacated 50'
- <all other values>
- BOROUGH MAINTAINED ROADS



The information depicted hereon is for a graphical representation only of best available sources. The Kenai Peninsula Borough assumes no responsibility for any errors on this map.



AERIAL IMAGERY 2021

BLOCK LENGTH

Scott Huff
 Platting Manager
 Current Time:
 2/2/2022 9:54 AM