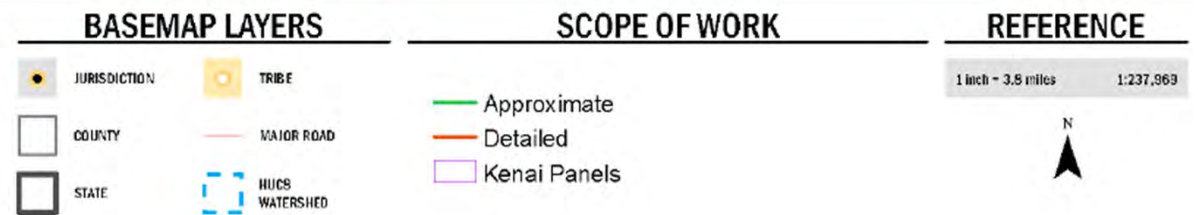
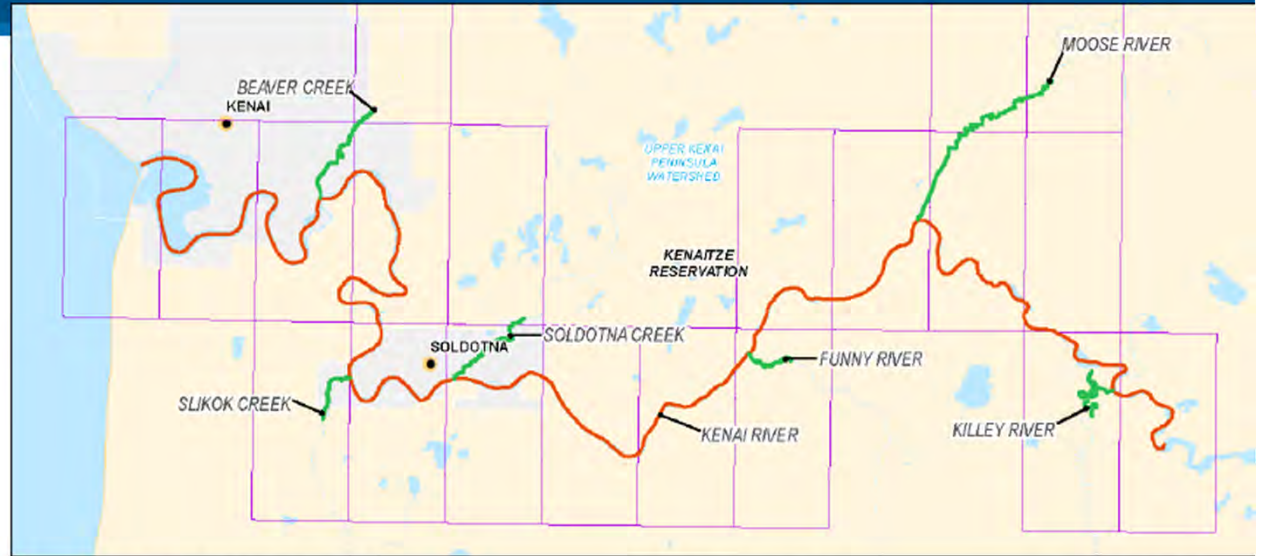


SCOPE OF WORK

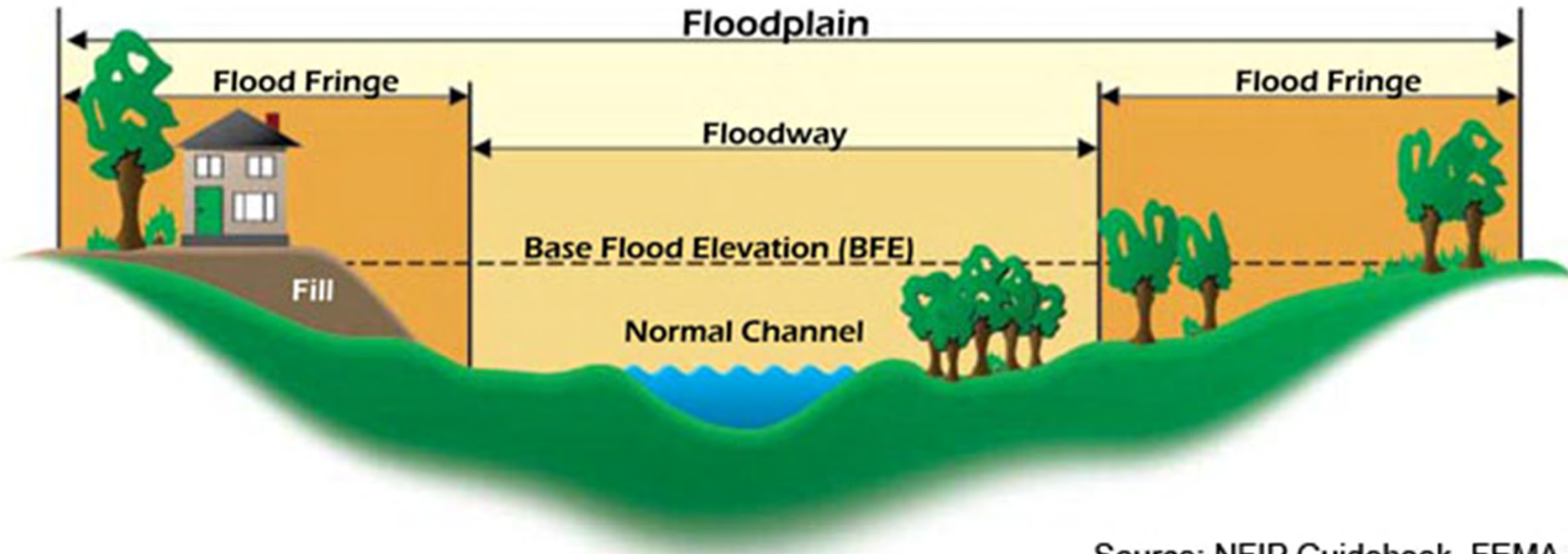
This study covered:

- Detailed streams.
 - Kenai River (47.3 mi.)
- Approximate streams.
 - Beaver Creek (3.3 mi.)
 - Funny River (1.7 mi.)
 - Killey River (2.7 mi.)
 - Moose River (6.0 mi.)
 - Slikok Creek (1.8 mi.)
 - Soldotna Creek (3.1 mi.)

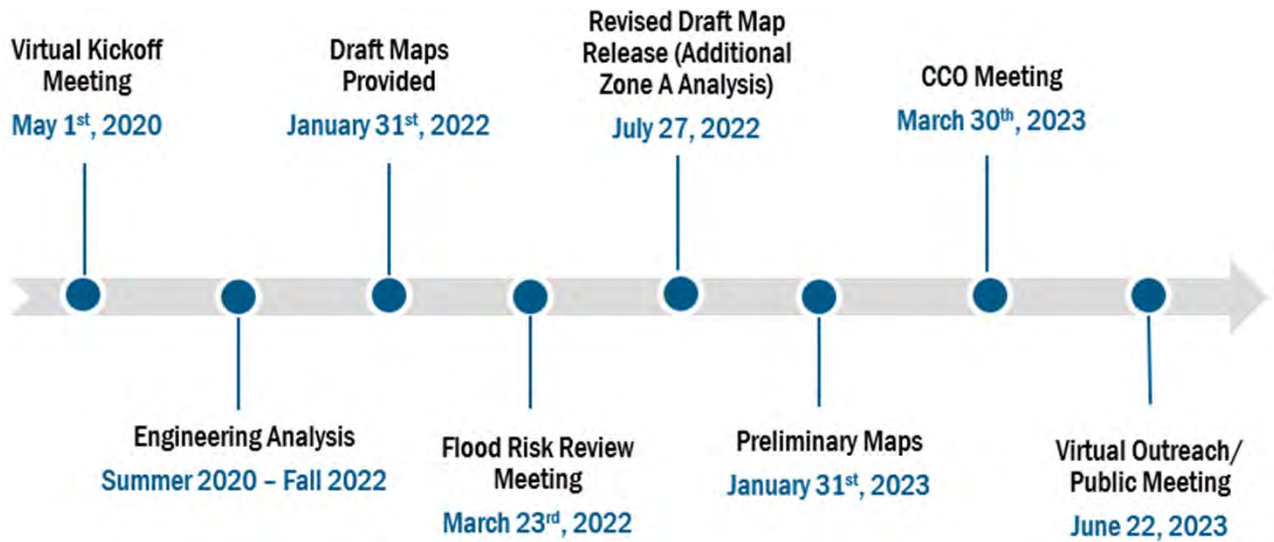


Map showing the extent of the study completed in Kenai Peninsula Borough.

Characteristics of a Floodplain

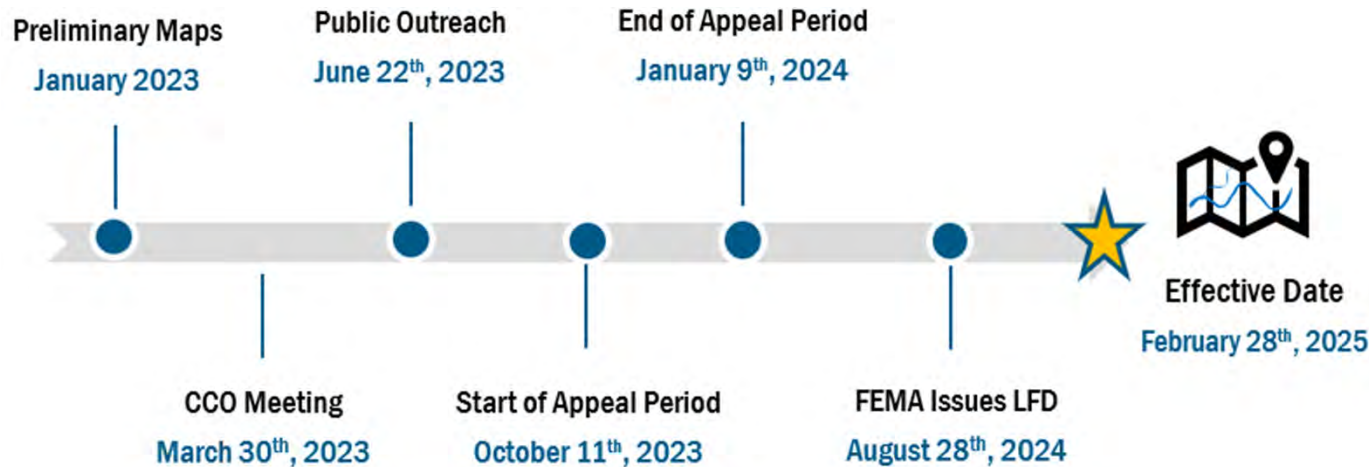


Source: NFIP Guidebook, FEMA



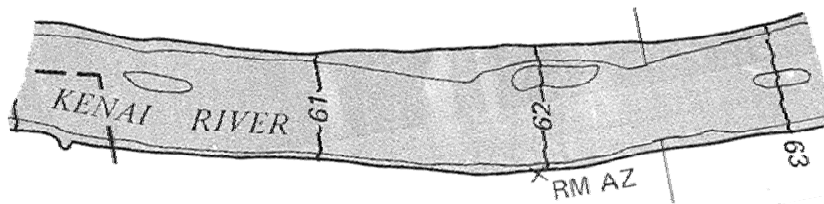
“Letter of Final Determination” (LFD)

- Sent to communities and publishes the BFEs in the Federal Register
- Communities have 6 months to adopt the study before the data becomes “effective”
- **Failure to adopt results in suspension from the NFIP**



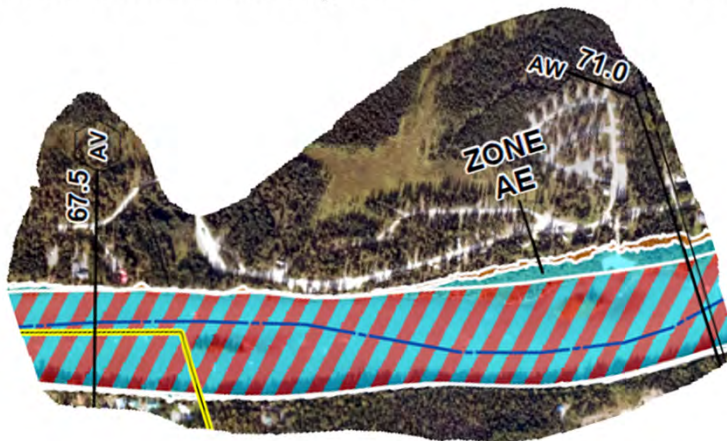
DIGITAL FLOOD INSURANCE RATE MAPS – ELEVATION DATUMS

- Effective maps relative to National Geodetic Vertical Datum – NGVD 29
 - Based on a mean sea level from 21 tidal stations in the US & 5 stations in Canada



**Reference to the National Geodetic Vertical Datum of 1929

- Preliminary maps relative to North American Vertical Datum – NAVD 88
 - Based on the density of the water head of varying values of sea heights



Western Hemisphere; Vertical Datum: NAVD 88

Big Eddy
Kenai River Flood
September 12, 2023



Castaway Cove Island
Kenai River Flood
September 13, 2023



Big Eddy
Kenai River Flood
September 13, 2023



Kenai Keys
Kenai River Flood
September 13, 2023



Dow Island
Kenai River Flood
September 13, 2023



Kenai Keys
Kenai River Flood
September 13, 2023



Kenai Keys
Kenai River Flood
September 13, 2023

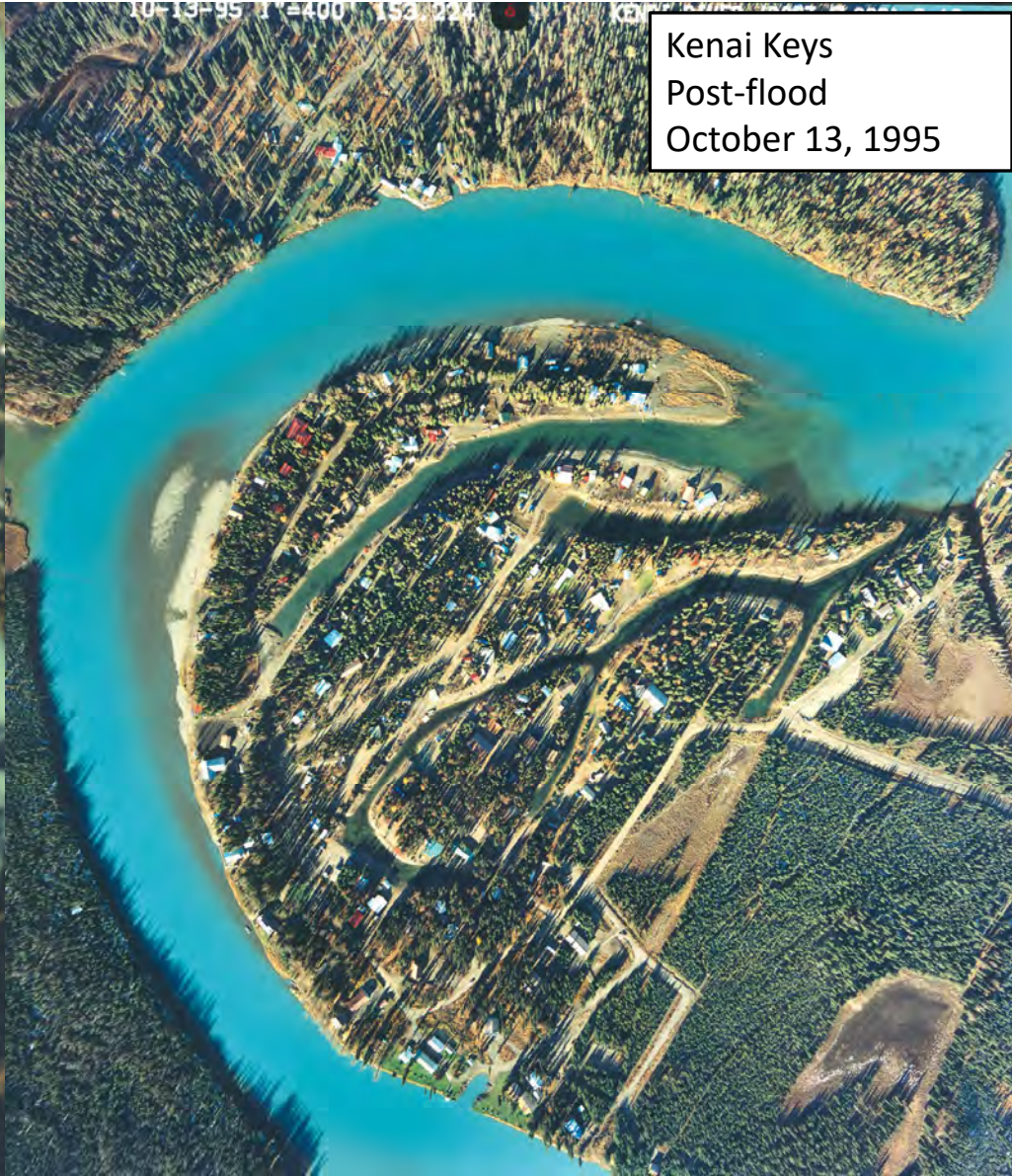


Big Eddy Area
Kenai River Flood
September 26, 1995





Kenai Keys
Kenai River Flood
September 26, 1995



Kenai Keys
Post-flood
October 13, 1995