

# **South Peninsula Hospital, Inc.**

**Quarterly Report**

**June 20, 2017**

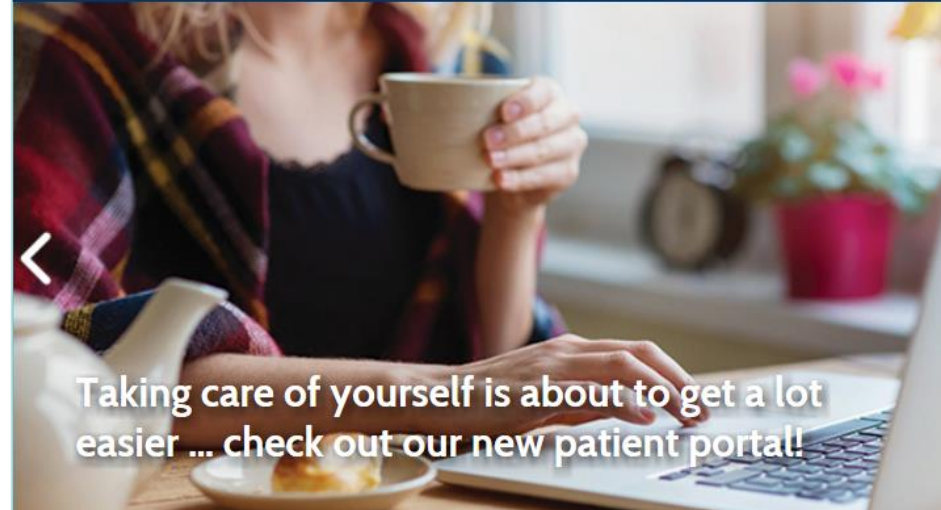
*Prepared for the*

**Kenai Peninsula Borough  
Assembly and Administration**



# In the News

- **AthenaNet & Medicare Payment Reform**
- **Dr. Wiest Retires**
- **Diabetes and Lipids Clinic of Alaska**
- **New Senior Leaders**
- **Alliant benefits administrator**
- **Cash pay discount for MRI & CT**





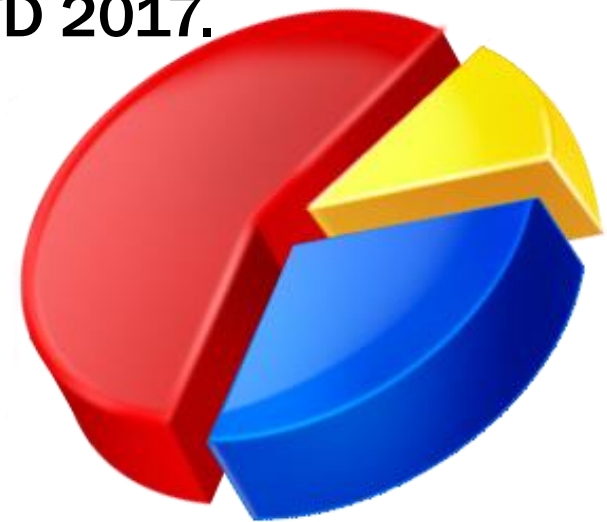
# Financial Snapshot

**Uncompensated Care & Community Benefit – 3 yrs**

**Key Indicators:**

**Comparisons Fiscal YTD 2016 Fiscal YTD 2017.**

- **Hospital Volume**
- **Patient Revenue**
- **Operating Expenses**
- **Net Income**

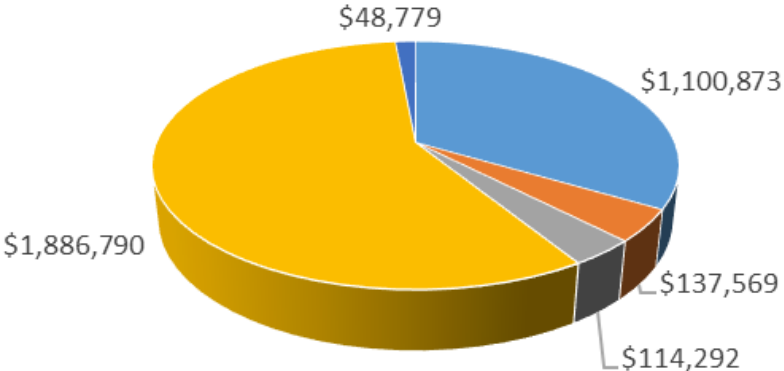


# Uncompensated Care & Community Benefit

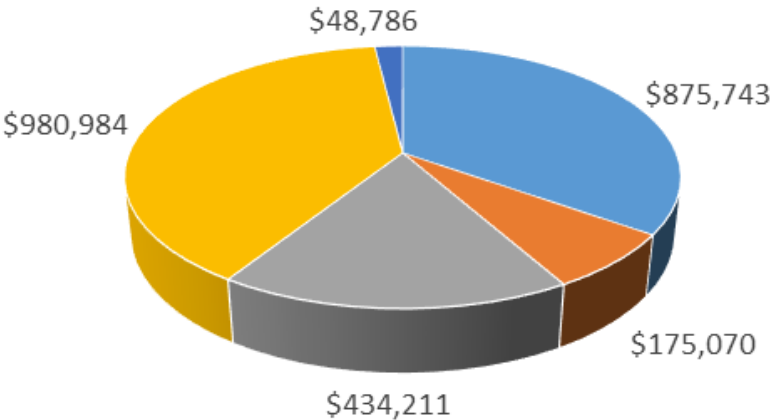
**KEY:**

- Subsidized Health Services**
- Financial Assistance**
- Health Education**
- Community Health**
- Cash Contributions**

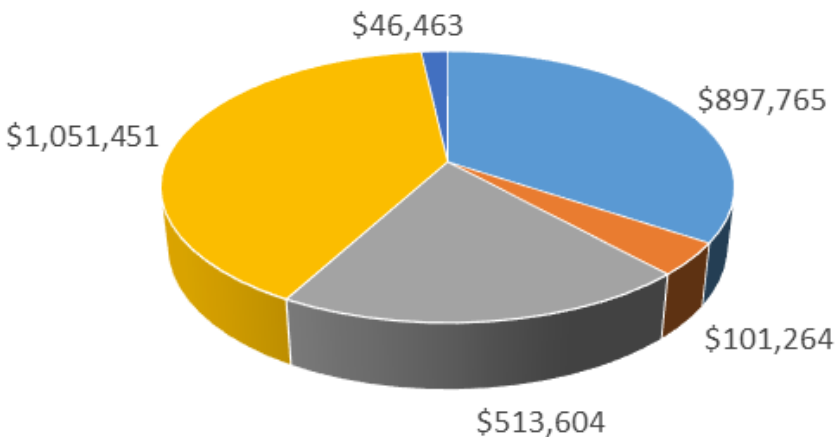
Total for 2016 = \$3,288,303.



Total for 2015 = \$2,514,794.

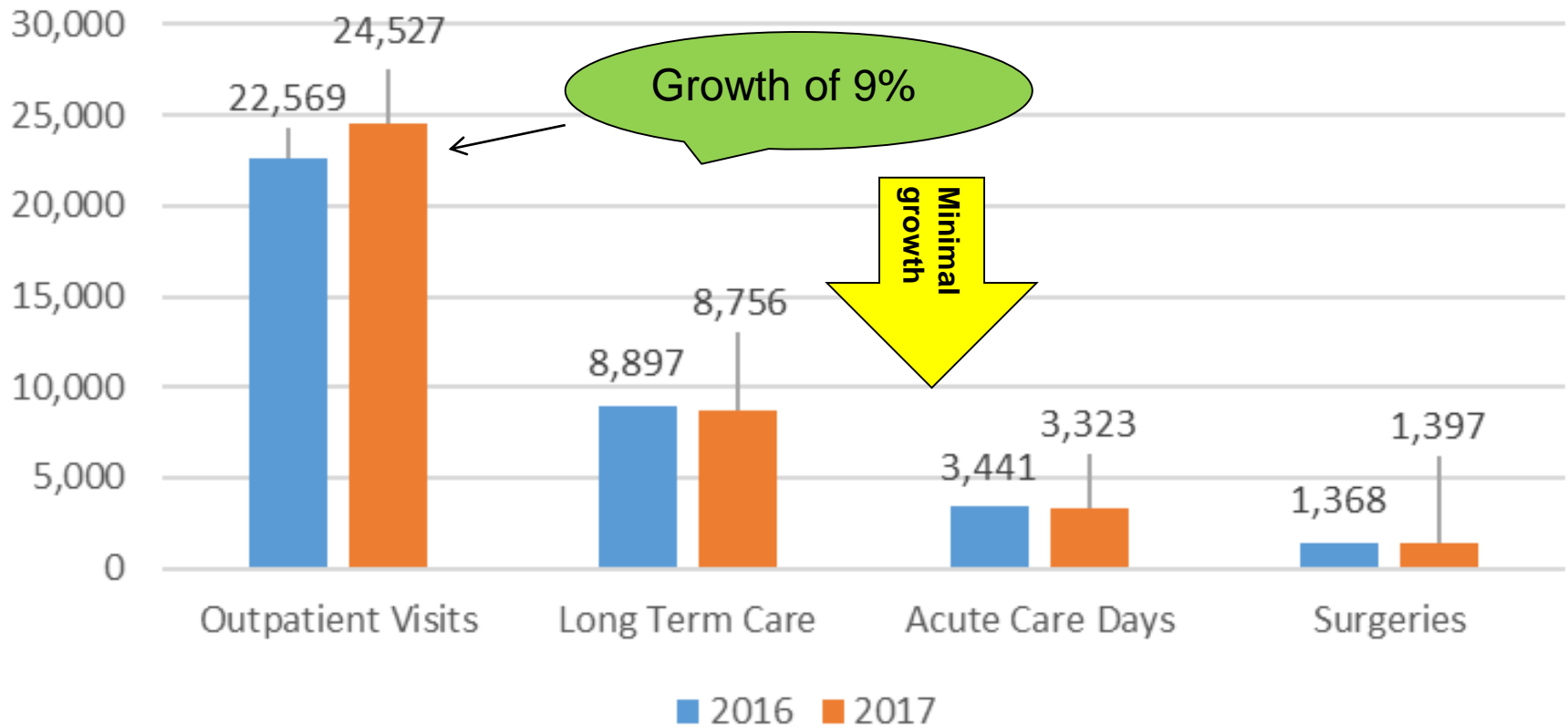


Total for 2014 = \$2,595,547.

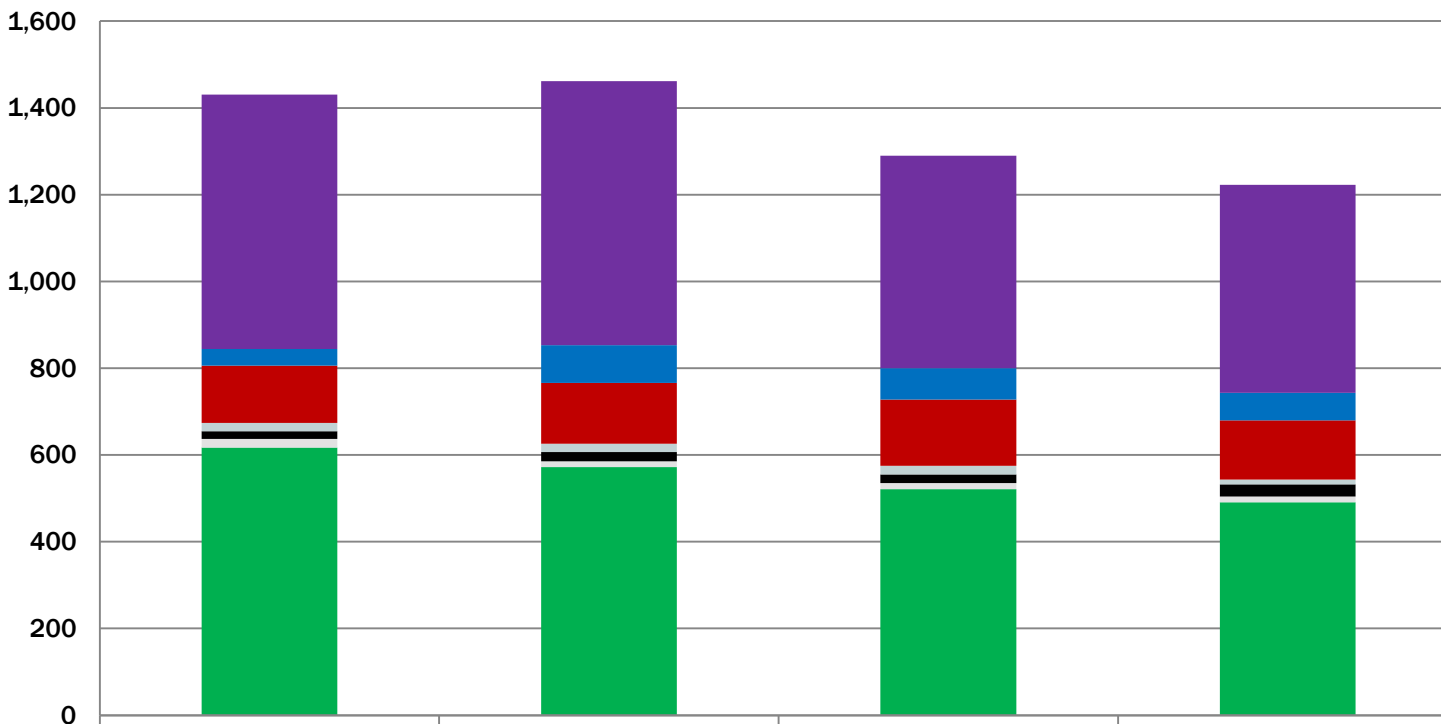


# Hospital Volume

Key Statistics YTD Fiscal Year May 2016 vs 2017



## South Peninsula Hospital Inpatient Discharges excluding Long Term Care

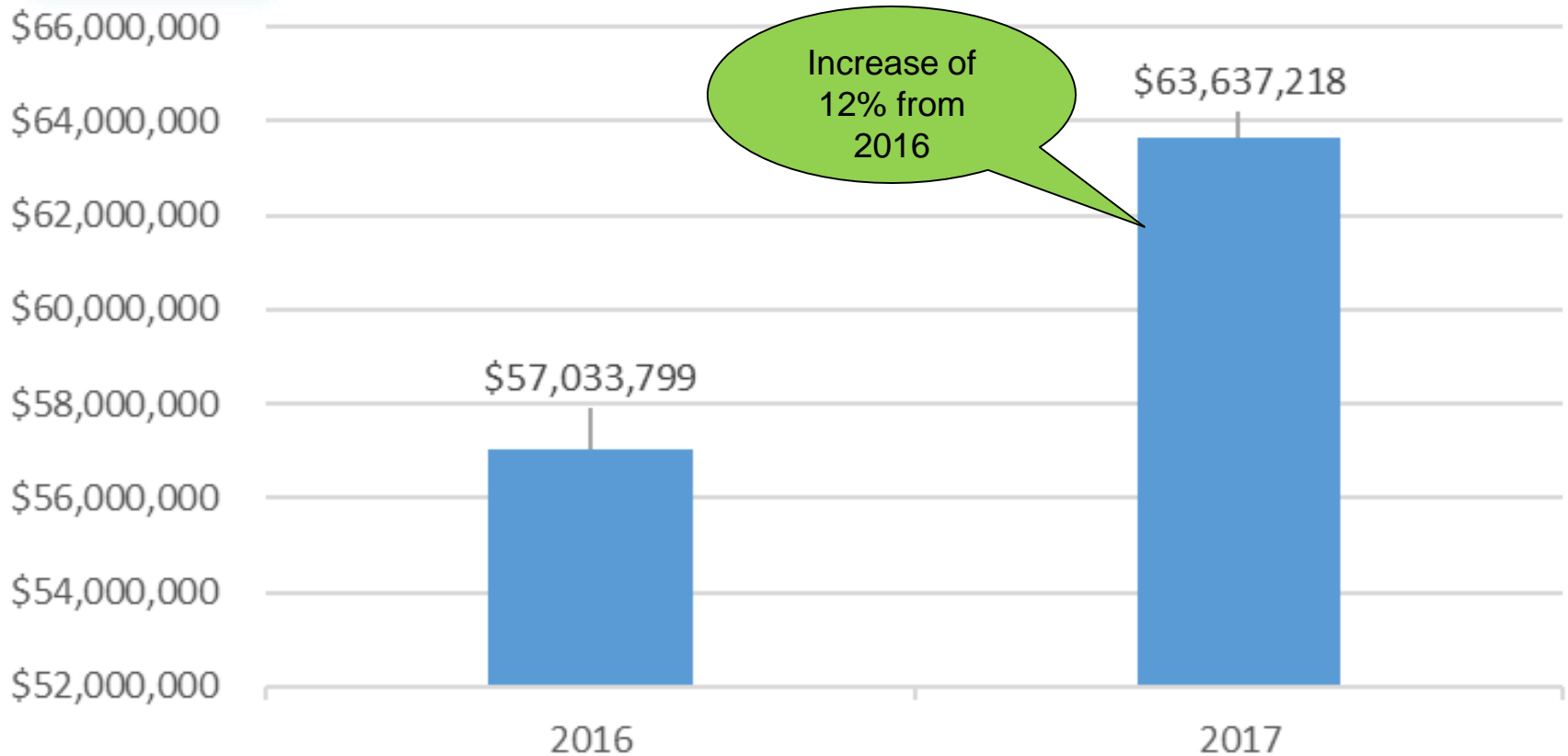


	2014	2015	2016	2017 thru May
Observation	587	609	490	480
Swingbed	38	87	72	63
Obstretic	132	140	153	137
Peds	19	19	20	11
Step-Down	18	22	20	28
ICU	20	13	14	13
Acute Care	617	572	521	491



bergen.com

## Net Patient Revenue YTD Fiscal Year May 2016 vs 2017

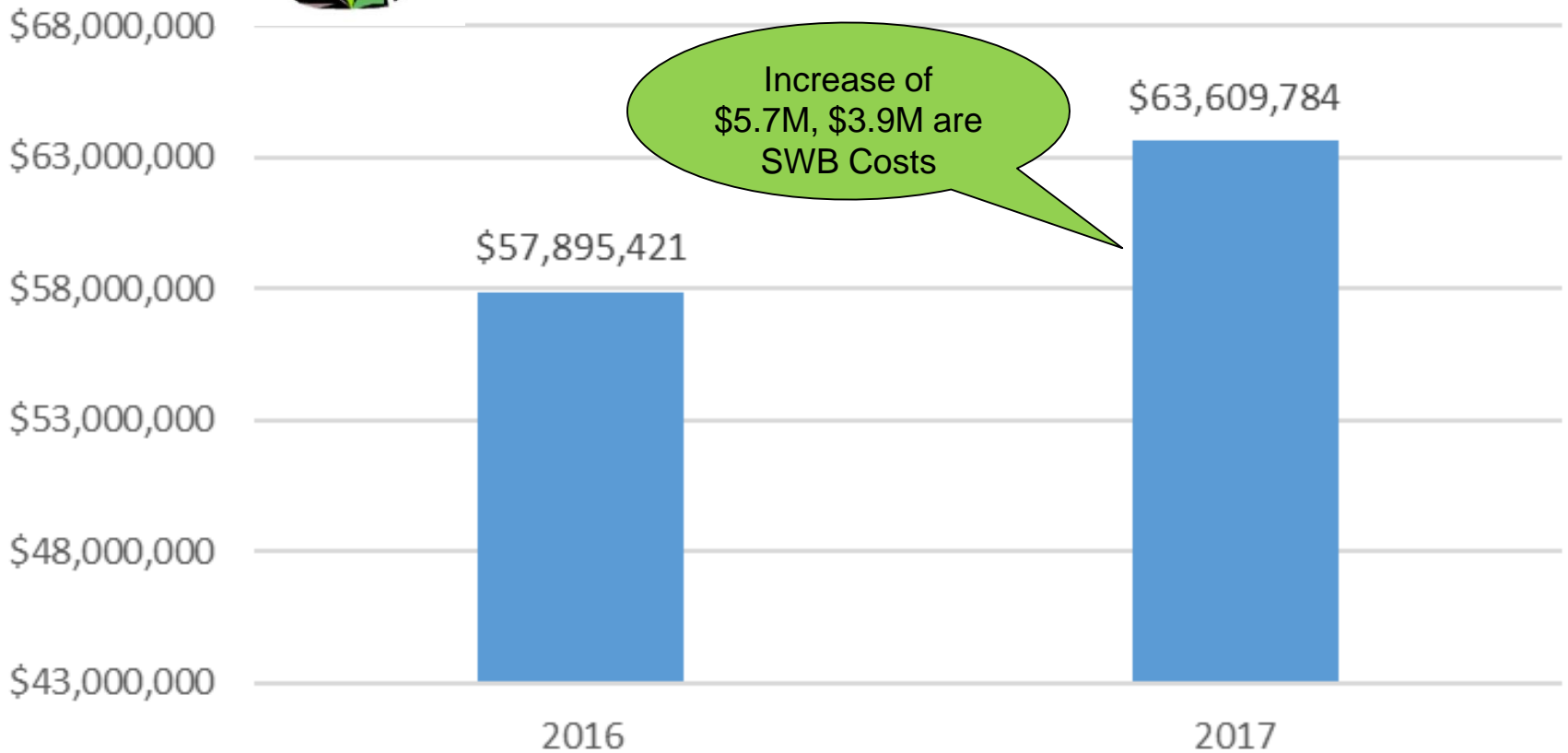






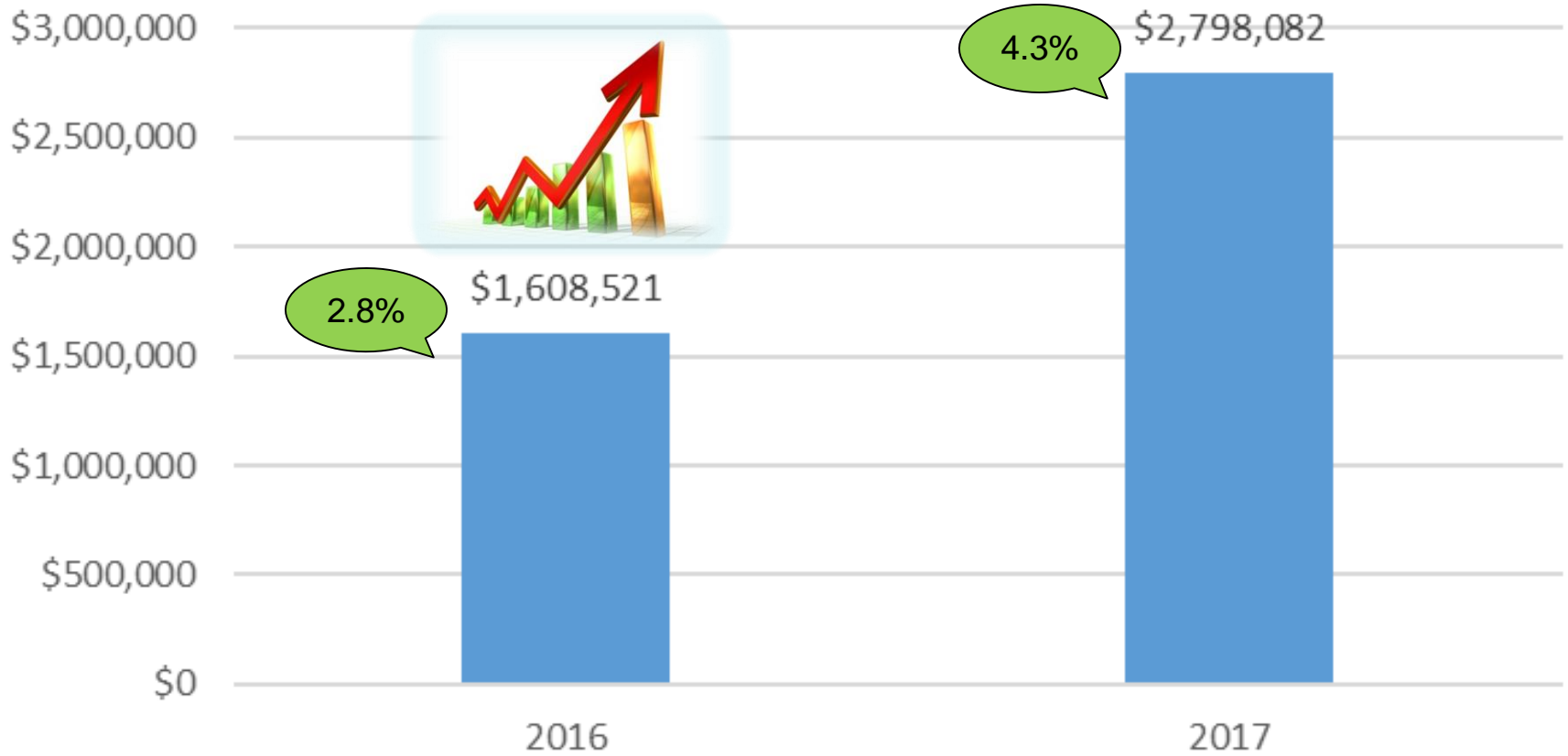
## Operating Expenses

YTD Fiscal Year May 2016 vs 2017



# Total Net Income

## YTD Fiscal Year May 2016 vs 2017



# South Peninsula Hospital, Inc.

Questions?



South  
Peninsula  
Hospital