

## **E. NEW BUSINESS**

- 5. Ordinance 2024-25:  
Amending KPB 21.18.025 to address adoptions and deletions of anadromous waters within the South District of the KPB 21.18 Appendix that have been identified in the "Atlas and Catalog of Waters Important for Spawning, Rearing, or Migration of Anadromous Fish" published by the Alaska Department of Fish and Game.**

# Kenai Peninsula Borough

## Planning Department

---

### MEMORANDUM

**TO:** Brent Johnson, Assembly President  
Members, KPB Assembly

**THRU:** Peter A. Micciche, Mayor *AM*  
Robert Ruffner, Planning Director *RR*

**FROM:** Samantha Lopez, River Center Manager *SL*

**DATE:** August 6, 2024

**SUBJECT:** Ordinance 2024- 25 , Amending KPB 21.18.025 to address adoptions and deletions of anadromous waters within the South District of the KPB 21.18 Appendix that have been identified in the "Atlas and Catalog of Waters Important for Spawning, Rearing, or Migration of Anadromous Fish" published by the Alaska Department of Fish and Game (Mayor)

---

The Kenai Peninsula Borough (“KPB”) is home to vital watersheds that our salmon require to spawn, rear, and grow in. Maintaining watershed connectivity via riparian habitat buffers along anadromous waterbodies is one crucial tool that has proven to aid in sustaining the Kenai Peninsula’s salmon populations. It is important that these buffers are developed in ways that allow property owners to freely recreate while also maintaining a healthy riparian habitat that benefits our salmon.

The Alaska Department of Fish and Game’s (“ADFG”) maintains the “Atlas and Catalog of Waters Important for Spawning, Rearing, or Migration of Anadromous Fish” (“Catalog”), and makes annual additions and deletions based on data observed in the field. In 2014, the KPB opted to maintain its own list of anadromous waters, known as the KPB 21.18 Appendix, which is categorized into three geographical districts: South, West, and North. This ordinance addresses the additions and deletions within the South District.

KPB 21.18.030(D) requires that the River Center review ADFG’s additions & deletions to the Catalog every three years, and present those changes to the Assembly. After a thorough review of those changes, the River Center identified the majority of changes as extensions of waterbodies already listed the KPB 21.18 Appendix, with only a few new waterbodies.

Your consideration is appreciated.

Introduced by: Mayor  
Date: 08/06/24  
Hearing: 09/03/24  
Action:  
Vote:

**KENAI PENINSULA BOROUGH  
ORDINANCE 2024-25**

**AN ORDINANCE AMENDING KPB 21.18.025 TO ADDRESS ADOPTIONS AND DELETIONS OF ANADROMOUS WATERS WITHIN THE SOUTH DISTRICT OF THE KPB 21.18 APPENDIX THAT HAVE BEEN IDENTIFIED IN THE "ATLAS AND CATALOG OF WATERS IMPORTANT FOR SPAWNING, REARING, OR MIGRATION OF ANADROMOUS FISH" PUBLISHED BY THE ALASKA DEPARTMENT OF FISH AND GAME**

- WHEREAS,** the Kenai Peninsula Borough (KPB) is home to vital watersheds that our salmon require to spawn, rear, and grow in; and
- WHEREAS,** maintaining watershed connectivity via riparian habitat buffers along anadromous waterbodies is one crucial tool that has proven to aid in sustaining the Kenai Peninsula’s salmon populations; and
- WHEREAS,** Goal 2, Objective D, Strategy 2 of the 2019 KPB Comprehensive Plan calls for the identification and protection of critical natural systems of the KPB, its rivers, watersheds, floodplains and fish and wildlife habitats and resources, specifically through KPB 21.18; and
- WHEREAS,** the Alaska Department of Fish and Game (ADFG) has jurisdiction over anadromous water and maintains the "Atlas and Catalog of Waters Important for the Spawning, Rearing, or Migration of Anadromous Fish" (Catalog); and
- WHEREAS,** KPB 21.18.030(D) requires that ADFG’s additions and deletions to the Catalog be reviewed every three years; and
- WHEREAS,** certain waters in the Catalog do not have sufficient ADFG documentation to verify their anadromous status and should not be regulated by KPB Chapter 21.18; and
- WHEREAS,** direct mail notice of this ordinance as required by KPB 21.04.020 was sent to impacted property owners; and
- WHEREAS,** the Planning Commission at its regularly scheduled meeting of August 12, 2024 recommended \_\_\_\_\_;

**NOW, THEREFORE, BE IT ORDAINED BY THE ASSEMBLY OF THE KENAI PENINSULA BOROUGH:**

**SECTION 1.** That KPB 21.18.025 is hereby amended as follows:

**21.18.025. Application.**

A. The following anadromous waters, as identified in the "Atlas and Catalog of Waters Important for Spawning, Rearing, or Migration of Anadromous Fish" published by the Alaska Department of Fish and Game (ADF&G) and listed in the KPB 21.18 Appendix adopted by the assembly and incorporated herein by reference, are subject to this chapter:

[1. KENAI RIVER DISTRICT ANADROMOUS WATERS MADE SUBJECT TO THIS CHAPTER ON MAY 15, 1996.]

[2. MAJOR WATERS DISTRICT ANADROMOUS WATERS MADE SUBJECT TO THIS CHAPTER ON MAY 16, 2000.]

[3]1. West District anadromous waters made subject to this Chapter beginning January 1, 2014.

[4]2. North District anadromous waters made subject to this Chapter beginning January 1, 2014.

a. Including the Kenai River, formerly known as the Kenai River District, made subject to this chapter on May 15, 1996.

b. Including various major waterbodies identified within the KPB 21.18 Appendix, formerly included in the Major Waters District, made subject to this chapter on May 16, 2000.

[5]3. South District anadromous waters made subject to this Chapter beginning January 1, 2014.

a. Including various major waterbodies identified within the KPB 21.18 Appendix, formerly included in the Major Waters District, made subject to this chapter on May 16, 2000.

b. Additional substantiated waterbodies identified in the KPB 21.18 Appendix made subject to this chapter on October 1, 2024.

**SECTION 2.** That this ordinance shall be effective immediately.

**ENACTED BY THE ASSEMBLY OF THE KENAI PENINSULA BOROUGH THIS \* DAY OF \*, 2024.**

\_\_\_\_\_  
Brent Johnson, Assembly President

ATTEST:

\_\_\_\_\_  
Michele Turner, CMC, Acting Borough Clerk

Yes:

No:

Absent:

**KPB 21.18 Appendix: South District**

**Proposed Updates**

AWC Number	Name	Tributary To	Salt Water Terminus	Date Adopted/Proposed	
1	231-20-10330	Unknown	Aialik Peninula	January 1, 2014	
2	231-20-10337	Unknown	Aialik Peninula	January 1, 2014	
3	232-10-10250	Unknown	Nuka Passage	January 1, 2014	
4	232-10-10330	*Unknown (397)		October 1, 2024	
5	232-10-10330-0010	*Unknown lake (1264)		October 1, 2024	
6	232-10-10330-2015	*West Fork Petrof River		October 1, 2024	
7	232-10-10330-2015	*West Fork Petrof River		October 1, 2024	
8	232-10-10330-2015	West Fork Petrof River		October 1, 2024	
9	232-10-10340	Unknown	Tonsina Bay	January 1, 2014	
10	232-10-10342	Unknown	Tonsina Bay	January 1, 2014	
11	232-10-10350	Unknown	Front Point	January 1, 2014	
12	232-15-10350	Unknown	Home Cove, Nuka Island	January 1, 2014	
13	232-15-10360	Unknown	Home Cove, Nuka Island	January 1, 2014	
14	232-22-10060	Unknown	North Arm, Nuka Bay	January 1, 2014	
15	232-22-10064	Unknown	North Arm, Nuka Bay	January 1, 2014	
16	232-22-10070	Unknown	Pilot Harbor, North Arm, Nuka Bay	January 1, 2014	
17	232-22-10077	Unknown	North Arm, Nuka Bay	January 1, 2014	
18	232-22-10081	Unknown	North Arm, Nuka Bay	January 1, 2014	
19	232-22-10082	Unknown	North Arm, Nuka Bay	January 1, 2014	
20	232-22-10092	Unknown	North Arm, Nuka Bay	January 1, 2014	
21	232-22-10130	Nuka River	Beauty Bay	January 1, 2014	
22	232-22-10140	Nuka Delta	Beauty Bay	January 1, 2014	
23	232-22-10145	Ferrum Creek	Beauty Bay	January 1, 2014	
24	232-22-10158	Shelter Cove Creek	Shelter Cove, Beauty Bay	January 1, 2014	
25	232-22-10215	Unknown	Yalik Bay, Nuka Bay	January 1, 2014	
26	232-23-10100	Unknown	East Arm, McCarty Fjord	January 1, 2014	
27	232-23-10100-0010	Delight Lake	Delight Creek	January 1, 2014	
28	232-23-10120	*Unknown (207)		October 1, 2024	
29	232-23-10120-0010	*Unknown lake (112)		October 1, 2024	
30	232-23-10245	Unknown	East Arm, McCarty Fjord	January 1, 2014	
31	232-23-10256	Unknown	James Lagoon	East Arm, McCarty Fjord	January 1, 2014
32	232-23-10257	Unknown	James Lagoon	East Arm, McCarty Fjord	January 1, 2014
33	232-23-10258	Unknown	James Lagoon	East Arm, McCarty Fjord	January 1, 2014
34	232-23-10259	Unknown	James Lagoon	East Arm, McCarty Fjord	January 1, 2014
35	232-23-10260	Unknown	East Arm, McCarty Fjord	January 1, 2014	
36	232-23-10261	Unknown	James Lagoon	East Arm, McCarty Fjord	January 1, 2014
37	232-23-10261-2002	Unknown	232-23-10261	January 1, 2014	
38	232-23-10261-2009	Unknown	232-23-10261	January 1, 2014	
39	232-23-10261-2009-3010	Unknown	232-23-10261-2009	January 1, 2014	
40	232-23-10290	Unknown	East Arm, McCarty Fjord	January 1, 2014	
41	232-23-10390	Unknown	East Arm, McCarty Fjord	January 1, 2014	
42	232-23-10390-0010	Unknown	232-23-10390	January 1, 2014	
43	232-23-10390-0020	Unknown	232-23-10390	January 1, 2014	
44	232-30-10195	Unknown	Sandy Bay	January 1, 2014	
45	232-30-10200	Unknown	Cup Cove, Harris Bay	January 1, 2014	
46	232-30-10215	Unknown	Harris Bay	January 1, 2014	
47	232-30-10215-0010	Unknown	Harris Bay via Trib	January 1, 2014	
48	232-30-10220	Unknown	Harris Bay	January 1, 2014	
49	232-30-10226	Unknown	Northwestern Lagoon, Harris Bay	January 1, 2014	
50	232-30-10230	Unknown	Northwestern Lagoon, Harris Bay	January 1, 2014	
51	232-30-10244	Boulder Creek	Northwestern Fiord, Harris Bay	January 1, 2014	
52	232-30-10244-0010	Unknown	Boulder Creek	January 1, 2014	
53	232-30-10244-0020	Unknown	Boulder Creek	January 1, 2014	
54	232-30-10244-0030	Unknown	Boulder Creek	January 1, 2014	
55	232-30-10244-0040	Unknown	Boulder Creek	January 1, 2014	
56	232-30-10247	Unknown	Northwestern Fiord, Harris Bay	January 1, 2014	
57	232-30-10250	Unknown	Northwestern Fiord, Harris Bay	January 1, 2014	
58	232-30-10255	Unknown	Northwestern Fiord, Harris Bay	January 1, 2014	
59	232-30-10270	Unknown	Paguna Arm, Two Arm Bay	January 1, 2014	
60	232-30-10272	Unknown	Paguna Arm, Two Arm Bay	January 1, 2014	
61	232-30-10273	Crescent Beach Pond	Harris Bay	January 1, 2014	
62	232-30-10273-2007	Unknown	Crescent Beach Pond	January 1, 2014	

**KPB 21.18 Appendix: South District**

**Proposed Updates**

63	232-30-10273-2007-3012	Unknown	232-30-10273-2007	January 1, 2014
64	232-30-10273-2020	Unknown	Crescent Beach Pond	January 1, 2014
65	232-30-10273-2024	Unknown	Crescent Beach Pond	January 1, 2014
66	232-30-10275	Unknown	Paguna Arm, Two Arm Bay	January 1, 2014
67	232-30-10340	Unknown	Taroka Arm, Two Arm Bay	January 1, 2014
68	232-30-10350	Unknown	Taroka Arm, Two Arm Bay	January 1, 2014
69	232-30-10355	Unknown	Taroka Arm, Two Arm Bay	January 1, 2014
70	232-30-10375	Unknown	Taroka Arm, Two Arm Bay	January 1, 2014
71	232-30-10375-0010	Unknown	232-30-10375	January 1, 2014
72	232-30-10420	Unknown	Thunder Bay	January 1, 2014
73	232-30-10425	Unknown	Thunder Bay	January 1, 2014
74	232-30-10435	Unknown	Thunder Bay	January 1, 2014
75	232-40-10130	Unknown	Aialik Bay	January 1, 2014
76	232-40-10140	Unknown	Aialik Bay	January 1, 2014
77	232-40-10140-0010	Unknown	232-40-10140	January 1, 2014
78	232-40-10145	Unknown	Aialik Bay	January 1, 2014
79	232-40-10177	Unknown	Aialik Bay	January 1, 2014
80	232-40-10182	Unknown	Aialik Bay	January 1, 2014
81	232-40-10230	Unknown	Aialik Bay	January 1, 2014
82	232-40-10230-0010	Unknown	232-40-10230	January 1, 2014
83	232-40-10250	Unknown	Holgate Arm, Aialik Bay	January 1, 2014
84	232-40-10254	Unknown	Holgate Arm, Aialik Bay	January 1, 2014
85	232-40-10280	Unknown	Quicksand Cove, Aialik Bay	January 1, 2014
86	232-40-10280-2007	Unknown	232-40-10280	January 1, 2014
87	241-11-10730	Seldovia River		October 1, 2024
88	241-11-10730	Seldovia River		May 16, 2000
89	241-11-10740	Unknown	Seldovia Bay	January 1, 2014
90	241-11-10740-2010	Unknown	241-11-10740	January 1, 2014
91	241-11-10770-2010	Unknown	241-11-10740	January 1, 2014
92	241-11-10800	Barabara Creek	Kachemak Bay	January 1, 2014
93	241-14-10510	Humpy Creek	Kachemak Bay	January 1, 2014
94	241-14-10510-2011	Unknown	Humpy Creek	January 1, 2014
95	241-14-10600	Martin River	Kachemak Bay	January 1, 2014
96	241-14-10600-0010	Unknown	Fox Creek, Kachemak Bay	January 1, 2014
97	241-14-10608	*Unknown (1211)		October 1, 2024
98	241-14-10608-2003	*Unknown (1212)		October 1, 2024
99	241-14-10610	Battle Creek	Kachemak Bay	January 1, 2014
100	241-14-10610-2011	Unknown	Battle Creek	January 1, 2014
101	241-14-10625	Unknown	Kachemak Bay	January 1, 2014
102	241-14-10625-2003	*Unknown (1209)		October 1, 2024
103	241-14-10625-2004	*Unknown (1210)		October 1, 2024
104	241-14-10625-2006	Fox Farm Creek	Bradley River	January 1, 2014
105	241-14-10625-2010	Bradley River		May 16, 2000
106	241-14-10630	Sheep Creek	Kachemak Bay	January 1, 2014
107	241-14-10630-2045	Unknown	Sheep Creek	January 1, 2014
108	241-14-10645	Fox River		October 1, 2024
109	241-14-10645	Fox River		October 1, 2024
110	241-14-10645	Fox River		October 1, 2024
111	241-14-10645	Fox River		May 16, 2000
112	241-14-10645-2019	Homesteader Creek		October 1, 2024
113	241-14-10645-2023	Powerline Creek		October 1, 2024
114	241-14-10645-2031	No Name Bog Creek		October 1, 2024
115	241-14-10645-2031-3002	*Unknown (1227)		October 1, 2024
116	241-14-10645-2058	Cache Creek		October 1, 2024
117	241-14-10645-2060	Clearwater Slough	Fox River	January 1, 2014
118	241-14-10645-2060-3004	Unknown	Clearwater Slough	January 1, 2014
119	241-14-10645-2060-3010	Clearwater Lake Fork	Clearwater Slough	January 1, 2014
120	241-14-10645-2071	Two Log Creek	Fox River	January 1, 2014
121	241-14-10645-2081	Bog Creek	Fox River	January 1, 2014
122	241-14-10645-2101	Nikolai Creek	Fox River	January 1, 2014
123	241-14-10645-2129	Windy Creek		October 1, 2024
124	241-14-10645-2131	Unknown	Nikolai Creek, South	January 1, 2014
125	241-14-10646	Fox River Outlet Braid		October 1, 2024
126	241-14-10646	Unknown	Kachemak Bay	January 1, 2014
127	241-14-10646-2009	*Unknown (1224)		October 1, 2024
128	241-14-10646-2011	*Unknown (1225)		October 1, 2024
129	241-14-10646-2013	*Unknown (1226)		October 1, 2024
130	241-14-10658	Unknown	Kachemak Bay	January 1, 2014

**KPB 21.18 Appendix: South District**

**Proposed Updates**

131	241-14-10660	Fox Creek		Kachemak Bay	January 1, 2014
132	241-14-10660-0010	Caribou Lake	Fox Creek, Kachemak Bay		January 1, 2014
133	241-14-10660-2003	Moose Creek			October 1, 2024
134	241-14-10664	Swift Creek			October 1, 2024
135	241-15-10340	*Slough of Wosnesenski River			October 1, 2024
136	241-15-10340	Wosnesenski River		Neptune Bay	January 1, 2014
137	241-15-10340-2009	Unknown	Wosnesenski River		January 1, 2014
138	241-15-10340-2020	*Unknown (1214)			October 1, 2024
139	241-15-10340-2020-3004	*Unknown (1213)			October 1, 2024
140	241-15-10340-2020-3004-4000	*Hazel Creek			October 1, 2024
141	0010	*Unknown lake (1266)			October 1, 2024
142	241-15-10340-2501	*Unknown (469)			October 1, 2024
143	241-15-10340-2501	Unknown	Wosnesenski River		January 1, 2014
144	241-15-10345	Stonehocker Creek		China Poot Bay	January 1, 2014
145	241-15-10350	Silver Creek		China Poot Bay	January 1, 2014
146	241-15-10370	Unknown		China Poot Bay	January 1, 2014
147	241-16-10040	Jakolof Creek		Jakolof Bay	January 1, 2014
148	241-16-10040-2010	*Unknown (467)			October 1, 2024
149	241-16-10040-2013	Unknown	Jakolof Creek		January 1, 2014
150	241-16-10040-2013-0010	Unknown	241-16-10040-2013		January 1, 2014
151	241-16-10040-2013-3009	*Unknown (1216)			October 1, 2024
152	241-16-10040-2013-3009	Unknown	241-16-10040-2013		January 1, 2014
153	241-16-10040-2013-3009-4008	Unknown	241-16-10040-2013-3009		January 1, 2014
154	241-16-10040-2013-3025	*Unknown (1217)			October 1, 2024
155	241-16-10040-2013-3025	Unknown	Jakolof Creek		January 1, 2014
156	241-16-10040-2013-3033	*Unknown (1218)			October 1, 2024
157	241-16-10064	*Unknown (1215)			October 1, 2024
158	241-16-10090	Unknown		Tutka Bay Lagoon	January 1, 2014
159	241-16-10120	*Unknown (1221)			October 1, 2024
160	241-16-10130	Unknown		Tutka Bay	January 1, 2014
161	241-16-10130-2010	Unknown	241-16-10130		January 1, 2014
162	241-16-10136	*Unknown (1219)			October 1, 2024
163	241-16-10136-2004	*Unknown (1220)			October 1, 2024
164	241-16-10245	Unknown		Sadie Cove	January 1, 2014
165	241-20-10530	Unknown		Port Graham	January 1, 2014
166	241-20-10550	Unknown	at head of Port Graham	Port Graham	January 1, 2014
167	241-20-10550-2009	Unknown	241-20-10550		January 1, 2014
168	241-20-10550-2009-0010	Unknown	241-20-10550-2009		January 1, 2014
169	241-20-10550-2014	Unknown	241-20-10550		January 1, 2014
170	241-20-10550-2015	Unknown	241-20-10550		January 1, 2014
171	241-20-10550-2017	Unknown	241-20-10550		January 1, 2014
172	241-20-10550-2018	Unknown	241-20-10550		January 1, 2014
173	241-20-10550-2018-3010	Unknown	241-20-10550-2018		January 1, 2014
174	241-20-10550-2019	Unknown	241-20-10550		January 1, 2014
175	241-20-10550-2020	Unknown	241-20-10550		January 1, 2014
176	241-20-10550-2021	Unknown	241-20-10550		January 1, 2014
177	241-20-10550-2022	Unknown	241-20-10550		January 1, 2014
178	241-20-10550-2023	Unknown	241-20-10550		January 1, 2014
179	241-20-10550-2024	Unknown	241-20-10550		January 1, 2014
180	241-20-10550-2024-3012	Unknown	241-20-10550-2024		January 1, 2014
181	241-20-10550-2040	*Unknown (1223)			October 1, 2024
182	241-20-10550-2040	Unknown	241-20-10550		January 1, 2014
183	241-20-10550-2048	*Unknown (1222)			October 1, 2024
184	241-20-10550-2048	Unknown	241-20-10550		January 1, 2014
185	241-20-10560	Unknown		Port Graham	January 1, 2014
186	241-20-10560-2014	Unknown	241-20-10560		January 1, 2014
187	241-20-10570	Unknown		Port Graham	January 1, 2014
188	241-20-10600	Unknown		Selenie Lagoon, Port Graham	January 1, 2014
189	241-20-10650	Unknown		Kachemak Bay	January 1, 2014
190	241-30-10375	Unknown		Cook Inlet	January 1, 2014
191	241-30-10400	Unknown		Cook Inlet	January 1, 2014
192	241-30-10500	English Bay River			May 16, 2000
193	241-30-10500-0010	Unknown	English Bay River		January 1, 2014
194	241-30-10500-0020	Unknown	English Bay River		January 1, 2014
195	241-30-10500-0030	Unknown	English Bay River		January 1, 2014



**KPB 21.18 Appendix: South District**

**Proposed Updates**

196	241-30-10500-2009	Unknown	English Bay River	January 1, 2014
197	241-30-10500-2012	Unknown	English Bay River	January 1, 2014
198	241-30-10500-2014	Unknown	English Bay River	January 1, 2014
199	241-30-10500-2018	Unknown	English Bay River	January 1, 2014
200	241-30-10500-2031	Unknown	English Bay River	January 1, 2014
201	241-30-10500-2039	Unknown	English Bay River	January 1, 2014
202	241-30-10500-2051	Unknown	English Bay River	January 1, 2014
203	241-30-10500-2061	Unknown	English Bay River	January 1, 2014
204	241-30-10500-2071	Unknown	English Bay River	January 1, 2014
205	241-40-10297	Unknown	Koyuktolik Bay	January 1, 2014
206	241-40-10299	Unknown	Koyuktolik Bay	January 1, 2014
207	241-40-10300	Unknown	Koyuktolik Bay	January 1, 2014
208	241-40-10300-2002	Unknown	241-40-10300	January 1, 2014
209	241-40-10300-2004	Unknown	241-40-10300	January 1, 2014
210	241-40-10300-2007	Unknown	241-40-10300	January 1, 2014
211	241-40-10300-2010	Unknown	241-40-10300	January 1, 2014
212	241-40-10300-2010-3001	Unknown	241-40-10300-2010	January 1, 2014
213	241-40-10300-2012	Unknown	241-40-10300	January 1, 2014
214	241-40-10300-2020	Unknown	241-40-10300	January 1, 2014
215	241-40-10300-2020-3005	Unknown	241-40-10300-2020	January 1, 2014
216	241-40-10309	Unknown	Koyuktolik Bay	January 1, 2014
217	241-40-10320	<b>Dogfish Lagoon Right Hand Crk</b>		<b>October 1, 2024</b>
218	241-40-10320	Unknown	Koyuktolik Bay	January 1, 2014
219	241-40-10325	<b>Dogfish Lagoon Left Hand Creek</b>		<b>October 1, 2024</b>
220	241-40-10325	Unknown	Koyuktolik Bay	January 1, 2014
221	242-10-10196	Perl Island Stream	Chugach Passage	January 1, 2014
222	242-10-10200	Unknown	Chugach Passage	January 1, 2014
223	242-10-10200-0010	Unknown	242-10-10200	January 1, 2014
224	242-10-10200-2003	Unknown	242-10-10200	January 1, 2014
225	242-10-10200-2003-0010	Unknown	242-10-10200-2003	January 1, 2014
226	242-10-10200-2003-3008	Unknown	242-10-10200-2003	January 1, 2014
227	242-10-10200-2003-3010	Unknown	242-10-10200-2003	January 1, 2014
228	242-10-10200-2003-3011	Unknown	242-10-10200-2003	January 1, 2014
229	242-10-10200-2026	Unknown	242-10-10200	January 1, 2014
230	242-10-10200-2034	Unknown	242-10-10200	January 1, 2014
231	242-10-10220	<b>*Port Chatham Lagoon Creek</b>		<b>October 1, 2024</b>
232	242-10-10220	Unknown	Port Chatham	January 1, 2014
233	242-10-10221	Unknown	Port Chatham	January 1, 2014
234	242-10-10221-2009	Unknown	242-10-10221	January 1, 2014
235	242-10-10230	Unknown	Port Chatham	January 1, 2014
236	242-10-10230-2003	Unknown	242-10-10230	January 1, 2014
237	242-10-10230-2011	Unknown	242-10-10230	January 1, 2014
238	242-10-10230-2014	Unknown	242-10-10230	January 1, 2014
239	242-10-10230-2014-3003	Unknown	242-10-10230-2014	January 1, 2014
240	242-10-10230-2021	Unknown	242-10-10230	January 1, 2014
241	242-10-10230-2029	Unknown	242-10-10230	January 1, 2014
242	242-10-10240	<b>*Port Chatham Middle Creek</b>		<b>October 1, 2024</b>
243	242-10-10240	Unknown	Port Chatham	January 1, 2014
244	242-10-10249	Unknown	Port Chatham	January 1, 2014
245	242-10-10261	Unknown	Chrome Baay, Port Chatham	January 1, 2014
246	242-10-10270	<b>Elizabeth Creek</b>		<b>October 1, 2024</b>
247	242-10-10270-0010	<b>*Unknown lake (1267)</b>		<b>October 1, 2024</b>
248	242-20-10170	Unknown	Chugach Bay	January 1, 2014
249	242-20-10190	Unknown	Chugach Bay	January 1, 2014
250	242-31-10080	Unknown	Port Dick	January 1, 2014
251	242-31-10114	Unknown	Rocky Bay	January 1, 2014
252	242-31-10115	Unknown	Rocky Bay	January 1, 2014
253	242-31-10116	Unknown	Rocky Bay	January 1, 2014
254	242-31-10117	Unknown	Rocky Bay	January 1, 2014
255	242-31-10119	Unknown	Rocky Bay	January 1, 2014
256	242-31-10119-2010	Unknown	242-31-10119	January 1, 2014
257	242-31-10119-2010-3005	Unknown	242-31-10119-2010	January 1, 2014
258	242-31-10120	Rocky River	Rocky Bay	January 1, 2014
259	242-31-10120-2149	Unknown	Rocky River	January 1, 2014
260	242-31-10120-2155	Unknown	Rocky River	January 1, 2014
261	242-31-10120-2155-3038	Unknown	242-31-10120-2155	January 1, 2014
262	242-31-10120-2155-3040	Unknown	242-31-10120-2155	January 1, 2014

**KPB 21.18 Appendix: South District**

**Proposed Updates**

263	242-31-10120-2155-3048	Unknown	242-31-10120-2155	January 1, 2014
264	242-31-10120-2159	Unknown	Rocky River	January 1, 2014
265	242-31-10120-2160	Unknown	Rocky River	January 1, 2014
266	242-31-10120-2160-0010	Unknown	242-31-10120-2160	January 1, 2014
267	242-31-10120-2251	Unknown	Rocky River	January 1, 2014
268	242-31-10120-2272	Unknown	Rocky River	January 1, 2014
269	242-31-10120-2272-3007	Unknown	242-31-10120-2272	January 1, 2014
270	242-31-10120-2282	Unknown	Rocky River	January 1, 2014
271	242-31-10122	Unknown	Rocky Bay	January 1, 2014
272	242-31-10125	Unknown	Rocky Bay	January 1, 2014
273	242-31-10130	Unknown	Picnic Harbor, Rocky Bay	January 1, 2014
274	242-32-10140	Unknown	Rocky Bay	January 1, 2014
275	242-32-10150	Unknown	Windy Bay	January 1, 2014
276	242-32-10155	Unknown	Windy Bay	January 1, 2014
277	242-32-10160	Unknown	Windy Bay	January 1, 2014
278	242-32-10160-2007	Unknown	242-32-10160	January 1, 2014
279	242-32-10170	Unknown	Windy Bay	January 1, 2014
280	242-32-10170-2015	Unknown	242-32-10170	January 1, 2014
281	242-32-10170-2024	Unknown	242-32-10170	January 1, 2014
282	242-32-10170-2037	Unknown	242-32-10170	January 1, 2014
283	242-32-10170-2045	Unknown	242-32-10170	January 1, 2014
284	242-32-10175	Unknown	Windy Bay	January 1, 2014
285	242-32-10180	Unknown	Windy Bay	January 1, 2014
286	242-32-10182	Unknown	Windy Bay	January 1, 2014
287	242-32-10183	Unknown	Windy Bay	January 1, 2014
288	242-32-10185	Unknown	Windy Bay	January 1, 2014
289	242-32-10186	Unknown	Windy Bay	January 1, 2014
290	242-42-10430	Island Creek	West Arm Port dick	January 1, 2014
291	242-42-10430-2003	*Island Creek Left Fork		October 1, 2024
292	242-42-10440	Unknown	West Arm Port Dick	January 1, 2014
293	242-42-10442	Unknown	West Arm Port Dick	January 1, 2014
294	242-42-10450	Slide Creek	West Arm Port Dick	January 1, 2014
295	242-42-10460	Port Dick Creek	West Arm Port Dick	January 1, 2014
296	242-42-10460-2010	Port Dick Creek	Port Dick Creek	January 1, 2014
297	242-43-10400	Unknown	Taylor Bay, Port Dick	January 1, 2014
298	242-43-10410	Unknown	Taylor Bay, Port Dick	January 1, 2014
299	242-43-10418	Unknown	Taylor Bay, Port Dick	January 1, 2014
300	242-43-10420	Unknown	Taylor Bay, Port Dick	January 1, 2014
301	244-10-10010	Anchor River		October 1, 2024
302	244-10-10010	Anchor River		October 1, 2024
303	244-10-10010	Anchor River		May 16, 2000
304	244-10-10010-2003	*Unknown (1202)		October 1, 2024
305	244-10-10010-2004	*Unknown (1203)		October 1, 2024
306	244-10-10010-2004-3011	*Unknown (1204)		October 1, 2024
307	244-10-10010-2005	*Unknown (1207)		October 1, 2024
308	244-10-10010-2006	*Unknown (1205)		October 1, 2024
309	244-10-10010-2009	*Unknown (1206)		October 1, 2024
310	244-10-10010-2011	North Fork Anchor River		May 16, 2000
311	244-10-10010-2011-3008	*Unknown (1196)		October 1, 2024
312	244-10-10010-2011-3008	Unknown	Anchor River North Fork	January 1, 2014
313	244-10-10010-2011-3023	*Unknown (1193)		October 1, 2024
314	244-10-10010-2011-3023	Unknown	Anchor River North Fork	January 1, 2014
315	244-10-10010-2011-3027	*Unknown (1194)		October 1, 2024
316	244-10-10010-2011-3027	Unknown	Anchor River North Fork	January 1, 2014
317	244-10-10010-2011-3031	Chakok River		October 1, 2024
318	244-10-10010-2011-3031	Chakok River	Anchor River North fork	January 1, 2014
319	244-10-10010-2011-3031-4016	Unknown	Chakok River	January 1, 2014
320	244-10-10010-2011-3031-4022	Unknown	Chakok River	January 1, 2014
	244-10-10010-2011-3031-4022		244-10-10010-2011-3031-4	
321	-5030	Unknown	022	January 1, 2014
322	244-10-10010-2011-3031-4030	*Unknown (1191)		October 1, 2024
323	244-10-10010-2011-3031-4030	Unknown	Chakok River	January 1, 2014
324	244-10-10010-2011-3031-4034	Unknown	Chakok River	January 1, 2014

**KPB 21.18 Appendix: South District**

**Proposed Updates**

325	244-10-10010-2011-3031-4036	Unknown	Chakok River	January 1, 2014
326	244-10-10010-2011-3031-4038	Unknown	Chakok River	January 1, 2014
	244-10-10010-2011-3031-4038		244-10-10010-2011-3031-4	
327	-5021	Unknown	038	January 1, 2014
	244-10-10010-2011-3031-4038		244-10-10010-2011-3031-4	
328	-5029	Unknown	038	January 1, 2014
	244-10-10010-2011-3031-4038		244-10-10010-2011-3031-4	
329	-5033	Unknown	038	January 1, 2014
	244-10-10010-2011-3031-4038		244-10-10010-2011-3031-4	
330	-5033-6008	Unknown	038-5033	January 1, 2014
331	244-10-10010-2011-3035	*Unknown (1195)		October 1, 2024
332	244-10-10010-2011-3071	North Fork Anchor River	Anchor River North Fork	January 1, 2014
333	244-10-10010-2011-3071-4080	Unknown	Anchor River North Fork	January 1, 2014
334	244-10-10010-2021	Unknown	Anchor River	January 1, 2014
335	244-10-10010-2021-3009	*Unknown (1201)		October 1, 2024
336	244-10-10010-2021-3029	Unknown	Two Moose Creek	January 1, 2014
337	244-10-10010-2025	*Unknown (1197)		October 1, 2024
338	244-10-10010-2025	Unknown	Anchor River	January 1, 2014
339	244-10-10010-2025-3011	*Unknown (1198)		October 1, 2024
340	244-10-10010-2025-3011	Unknown	244-10-10010-2025	January 1, 2014
341	244-10-10010-2027	Unknown	Anchor River	January 1, 2014
342	244-10-10010-2027-3002	Unknown	244-10-10010-2027	January 1, 2014
343	244-10-10010-2031	*Unknown (1199)		October 1, 2024
344	244-10-10010-2031-3004	*Unknown (1200)		October 1, 2024
345	244-10-10010-2088	Ruby Creek		October 1, 2024
346	244-10-10010-2088	Ruby Creek	Anchor River	January 1, 2014
347	244-10-10010-2090	*Telephone Creek		October 1, 2024
348	244-10-10010-2090	Unknown	Anchor River	January 1, 2014
349	244-10-10010-2100	Twitter Creek		October 1, 2024
350	244-10-10010-2100	Twitter Creek	Anchor River	January 1, 2014
351	244-10-10010-2100-3011	Bridge Creek	Anchor River	January 1, 2014
352	244-10-10010-2103	Unknown	Anchor River	January 1, 2014
353	244-10-10010-2122	South Beaver Creek	Anchor River	January 1, 2014
354	244-10-10010-2125	Unknown	Anchor River	January 1, 2014
355	244-10-10010-2146	Unknown	Anchor River	January 1, 2014
356	244-10-10010-2150	Beaver Creek	Anchor River	January 1, 2014
357	244-10-10010-2150-3009	Unknown	Beaver Creek	January 1, 2014
358	244-10-10010-2150-3041	*Unknown (1208)		October 1, 2024
359	244-10-10010-2150-3041	Unknown	Beaver Creek	January 1, 2014
360	244-10-10010-2150-3048	Unknown	Beaver Creek	January 1, 2014
361	244-10-10010-2193	Unknown	Anchor River	January 1, 2014
362	244-10-10010-2201	Unknown	Anchor River	January 1, 2014
363	244-10-10010-2201-3021	Unknown	244-10-10010-2201	January 1, 2014
364	244-10-10010-2202	Unknown	Anchor River	January 1, 2014
365	244-10-10010-2206	Unknown	Anchor River	January 1, 2014
366	244-10-10010-2209	Unknown	Anchor River	January 1, 2014
367	244-10-10010-2210	Unknown	Anchor River	January 1, 2014
368	244-10-10010-2211	Unknown	Anchor River	January 1, 2014
369	244-10-10010-2217	Unknown	Anchor River	January 1, 2014
370	244-10-10010-2220	Unknown	Anchor River	January 1, 2014
371	244-10-10010-2228	Anchor River		May 16, 2000
372	244-10-10050	Stariski Creek		May 16, 2000
373	244-10-10050-2012	Unknown	Stariski Creek	January 1, 2014
374	244-10-10050-2014	*Unknown (1190)		October 1, 2024
375	244-10-10050-2016	*Unknown (1189)		October 1, 2024
376	244-10-10050-2016	Unknown	244-10-10050-2012	January 1, 2014
377	244-10-10050-2040	Unknown	244-10-10050-2012	January 1, 2014
378	244-10-10050-2040-3006	*Unknown (1188)		October 1, 2024
379	244-10-10050-2040-3006	Unknown	244-10-10050-2040	January 1, 2014
380	244-10-10050-2049	*Unknown (1186)		October 1, 2024
381	244-10-10050-2050	*Unknown (1187)		October 1, 2024
382	244-10-10050-2050	Unknown	244-10-10050-2012	January 1, 2014
383	244-10-10050-2054	*Pepper Road Creek		October 1, 2024
384	244-10-10050-2060	Unknown	244-10-10050-2012	January 1, 2014
385	244-10-10050-2063	*Unknown (1184)		October 1, 2024
386	244-10-10050-2068	*Unknown (1185)		October 1, 2024

**KPB 21.18 Appendix: South District**

**Proposed Updates**

387	244-10-10050-2089	Unknown	244-10-10050-2012	January 1, 2014
388	244-10-10050-2089-3007	Unknown	244-10-10050-2089	January 1, 2014
389	244-10-10050-2089-3015	*Unknown (1182)		October 1, 2024
390	244-10-10050-2089-3016	*Unknown (1183)		October 1, 2024
391	244-10-10050-2300	Unknown	244-10-10050-2012	January 1, 2014
392	244-10-10050-2600	Unknown	244-10-10050-2012	January 1, 2014
393	244-20-10090	Ninilchik River		May 16, 2000
394	244-20-10090-2003	Unknown	244-10-10050-2012	January 1, 2014
395	244-20-10090-2020	*Unknown (1173)		October 1, 2024
396	244-20-10090-2026	*Unknown (1172)		October 1, 2024
397	244-20-10090-2026	Unknown	244-10-10050-2012	January 1, 2014
398	244-20-10090-2030	Unknown	244-10-10050-2012	January 1, 2014
399	244-20-10090-2030-3015	Unknown	244-20-10090-2030	January 1, 2014
400	244-20-10090-2030-3019	*Unknown (1179)		October 1, 2024
401	244-20-10090-2030-3019	Unknown	244-20-10090-2030	January 1, 2014
402	244-20-10090-2030-3030	Unknown	244-20-10090-2030	January 1, 2014
403	244-20-10090-2030-3032	Unknown	244-20-10090-2030	January 1, 2014
404	244-20-10090-2030-3032-4005	Unknown	244-20-10090-2030-3032	January 1, 2014
405	244-20-10090-2030-3034	Unknown	244-20-10090-2030	January 1, 2014
406	244-20-10090-2030-3036	Unknown	244-20-10090-2030	January 1, 2014
407	244-20-10090-2040	Unknown	244-10-10050-2012	January 1, 2014
408	244-20-10090-2041	Unknown	244-10-10050-2012	January 1, 2014
409	244-20-10090-2046	Unknown	244-10-10050-2012	January 1, 2014
410	244-20-10090-2057	Unknown	244-10-10050-2012	January 1, 2014
411	244-20-10090-2070	Unknown	244-10-10050-2012	January 1, 2014
412	244-20-10090-2093	*Unknown (1171)		October 1, 2024
413	244-20-10090-2096	Unknown	244-10-10050-2012	January 1, 2014
414	244-20-10100	Deep Creek		May 16, 2000
415	244-20-10100-2010	Calm Creek	Deep Creek	January 1, 2014
416	244-20-10100-2010-3028	*Unknown (1176)		October 1, 2024
417	244-20-10100-2010-3038	*Unknown (1177)		October 1, 2024
418	244-20-10100-2010-3041	Unknown	Clam Creek	January 1, 2014
419	244-20-10100-2019	Silver Salmon Creek	Deep Creek	January 1, 2014
420	244-20-10100-2019-3011	*Unknown (1174)		October 1, 2024
421	244-20-10100-2019-3018	*Unknown (1180)		October 1, 2024
422	244-20-10100-2019-3018	Unknown	Silver Salmon Creek	January 1, 2014
423	244-20-10100-2019-3018-4009	Unknown	244-20-10100-2019-3018	January 1, 2014
424	244-20-10100-2019-3022	*Unknown (1178)		October 1, 2024
425	244-20-10100-2019-3040	Unknown	Silver Salmon Creek	January 1, 2014
426	244-20-10100-2022	*Unknown (1175)		October 1, 2024
427	244-20-10100-2030	South Fork Deep Creek	Deep Creek	January 1, 2014
428	244-20-10100-2030-3032	Unknown	Deep Creek South Fork	January 1, 2014
429	244-20-10100-2030-3051	Unknown	Deep Creek South Fork	January 1, 2014
430	244-20-10100-2030-3071	Unknown	Deep Creek South Fork	January 1, 2014
431	244-20-10100-2030-3091	Unknown	Deep Creek South Fork	January 1, 2014
432	244-20-10100-2039	Unknown	Deep Creek	January 1, 2014
433	244-20-10100-2045	North Fork Deep Creek	Deep Creek	January 1, 2014
434	244-20-10100-2045-3001	North Fork Deep Creek	Deep Creek North Fork	January 1, 2014
435	244-20-10100-2045-3016	Unknown	Deep Creek North Fork	January 1, 2014
436	244-20-10100-2065	Cytex Creek	Deep Creek	January 1, 2014
437	244-20-10100-2070	Unknown	Cytex Creek	January 1, 2014
438	244-20-10100-2070-3042	Unknown	Cytex Creek	January 1, 2014
439	244-20-10100-2080	*Unknown (1181)		October 1, 2024
440	244-30-10050	Kasilof River		May 16, 2000
441	244-30-10050-0010	Tustumena Lake	Kasilof River	January 1, 2014
442	244-30-10050-2015	Coal Creek	Kasilof River	January 1, 2014
443	244-30-10050-2015-3011	*Unknown (1166)		October 1, 2024
444	244-30-10050-2018	*Unknown (98)		October 1, 2024
445	244-30-10050-2018	Unknown	Kasilof River	January 1, 2014
446	244-30-10050-2020	*Unknown (1167)		October 1, 2024
447	244-30-10050-2024	Crooked Creek	Kasilof River	January 1, 2014
448	244-30-10050-2024-3004	*Unknown (1168)		October 1, 2024
449	244-30-10050-2024-3044	Unknown	Crooked Creek	January 1, 2014
450	244-30-10050-2024-3044-0010	Unknown	244-30-10050-2024-3044	January 1, 2014
451	244-30-10050-2024-3058	Unknown	Crooked Creek	January 1, 2014
452	244-30-10050-2026	Unknown	Kasilof River	January 1, 2014

**KPB 21.18 Appendix: South District****Proposed Updates**

453	244-30-10050-2027	*Unknown (1169)		October 1, 2024
454	244-30-10050-2027	Unknown	Kasilof River	January 1, 2014
455	244-30-10050-2027-0010	Pollard Lake	Kasilof River via trib	January 1, 2014
456	244-30-10050-2027-0020	*Unknown lake (1265)		October 1, 2024
457	244-30-10050-2058	*Unknown (1170)		October 1, 2024
458	244-30-10050-2059	Shantatalik Creek	Tustumena Lake	January 1, 2014
459	244-30-10050-2060	Nikolai Creek	Tustumena Lake	January 1, 2014
460	244-30-10050-2070	Fox Creek	Tustumena Lake	January 1, 2014
461	244-30-10050-2075	Bear Creek	Tustumena Lake	January 1, 2014
462	244-30-10050-2099	Moose Creek	Tustumena Lake	January 1, 2014
463	244-30-10050-2115	Indian Creek	Tustumena Lake	January 1, 2014
464	244-30-10050-2121	Glacier Creek	Tustumena Lake	January 1, 2014
465	244-30-10050-2127	Seepage Creek	Tustumena Lake	January 1, 2014
466	244-30-10050-2134	Crystal Creek	Devils Bay, Tustumena Lake	January 1, 2014
467	244-30-10050-2135	Clear Creek	Tustumena Lake	January 1, 2014
468	244-30-10050-2136	Unknown	Tustumena Lake	January 1, 2014
469	244-30-10050-2137	Unknown	Tustumena Lake	January 1, 2014






### Legend

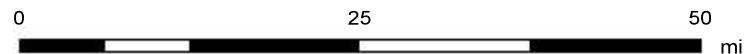
#### Regulatory Zoning

##### KPB 21.18 Anadromous Waters

-  Managed
-  Unsubstantiated
-  Exempt

#### Proposed Changes

-  Managed (removed)
-  Proposed (new)
-  Proposed (re-substantiation)



NOTE: Every reasonable effort has been made to ensure the accuracy of these data. However, by accepting this material, you agree that the Kenai Peninsula Borough assumes no liability of any kind arising from the use of this data. The data are provided without warranty of any kind, either expressed or implied, including but not limited to time, money or goodwill arising from the use, operation or modification of the data. In using these data, you further agree to indemnify, defend, and hold harmless Kenai Peninsula Borough for any and all liability of any nature arising from the lack of accuracy or correctness of the data, or use of the data.



Legend

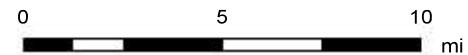
Regulatory Zoning

KPB 21.18 Anadromous Waters

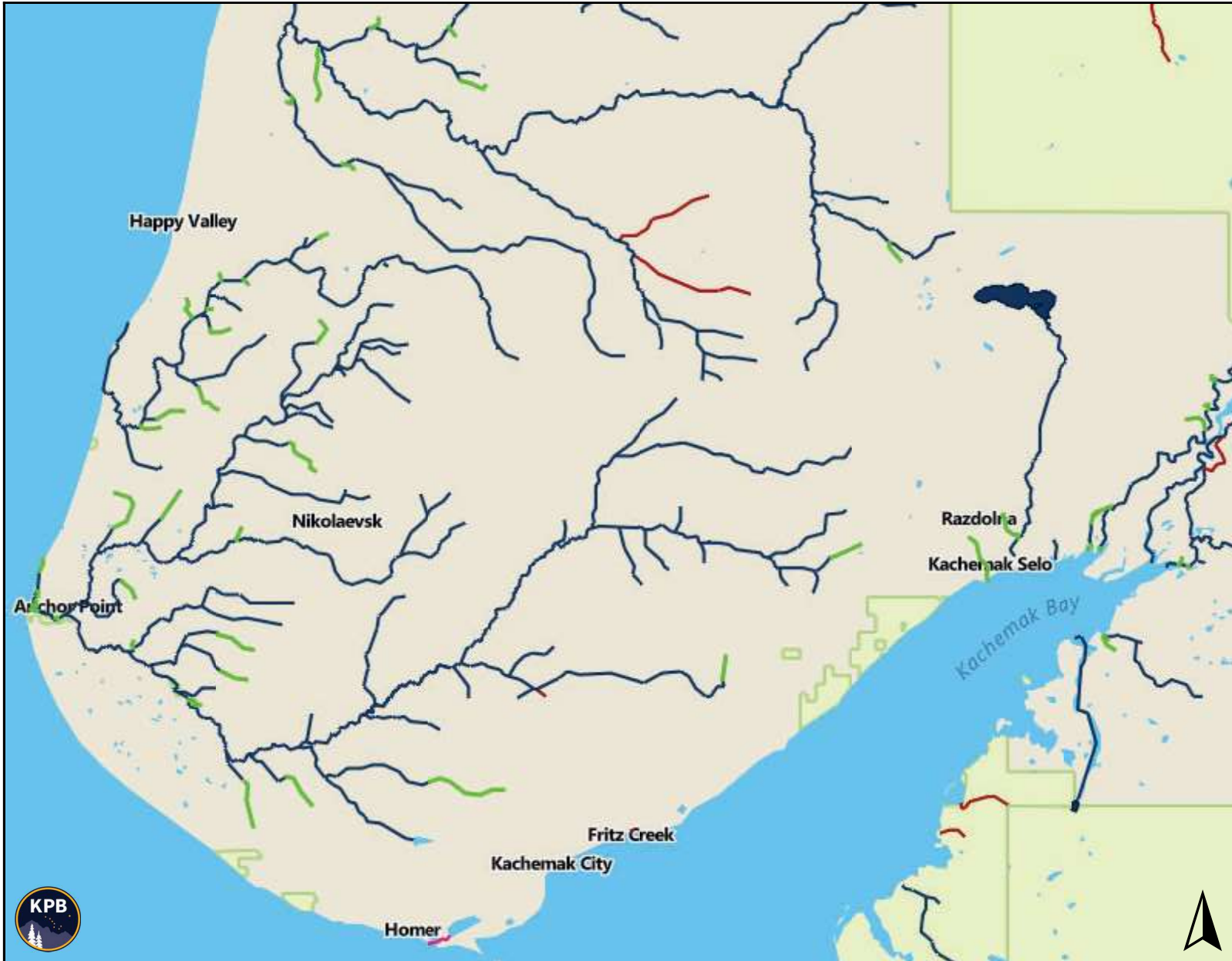
- Managed
- Unsubstantiated
- Exempt

Proposed Changes

- Managed (removed)
- Proposed (new)
- Proposed (re-substantiation)





NOTE: Every reasonable effort has been made to ensure the accuracy of these data. However, by accepting this material, you agree that the Kenai Peninsula Borough assumes no liability of any kind arising from the use of this data. The data are provided without warranty of any kind, either expressed or implied, including but not limited to time, money or goodwill arising from the use, operation or modification of the data. In using these data, you further agree to indemnify, defend, and hold harmless Kenai Peninsula Borough for any and all liability of any nature arising from the lack of accuracy or correctness of the data, or use of the data.






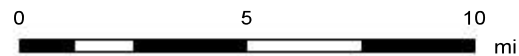
Legend

Regulatory Zoning  
KPB 21.18 Anadromous Waters

-  Managed
-  Unsubstantiated
-  Exempt

Proposed Changes

-  Managed (removed)
-  Proposed (new)
-  Proposed (re-substantiation)



NOTE: Every reasonable effort has been made to ensure the accuracy of these data. However, by accepting this material, you agree that the Kenai Peninsula Borough assumes no liability of any kind arising from the use of this data. The data are provided without warranty of any kind, either expressed or implied, including but not limited to time, money or goodwill arising from the use, operation or modification of the data. In using these data, you further agree to indemnify, defend, and hold harmless Kenai Peninsula Borough for any and all liability of any nature arising from the lack of accuracy or correctness of the data, or use of the data.





Legend

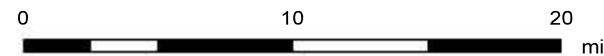
Regulatory Zoning

KPB 21.18 Anadromous Waters

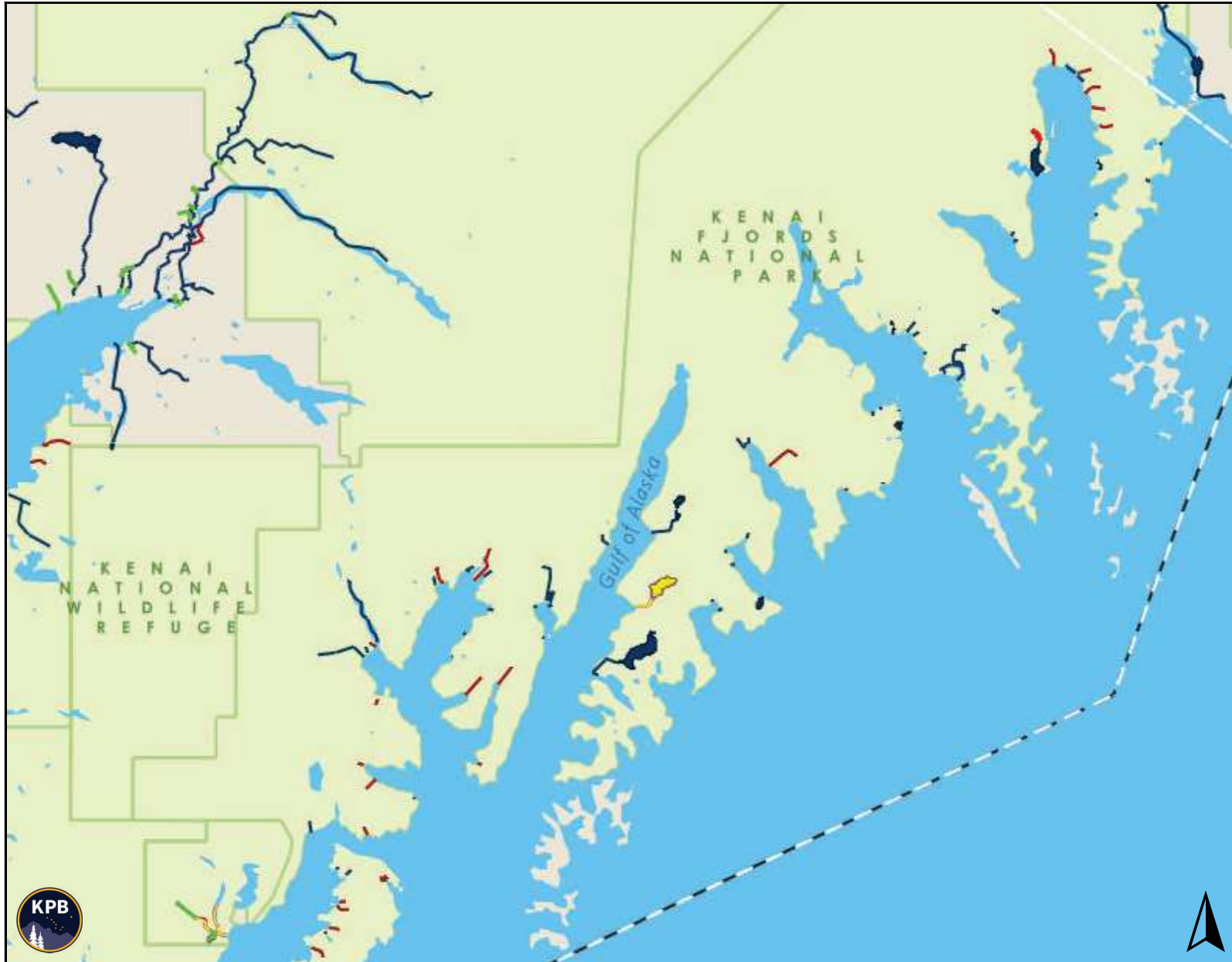
- Managed
- Unsubstantiated
- Exempt

Proposed Changes

- Managed (removed)
- Proposed (new)
- Proposed (re-substantiation)



NOTE: Every reasonable effort has been made to ensure the accuracy of these data. However, by accepting this material, you agree that the Kenai Peninsula Borough assumes no liability of any kind arising from the use of this data. The data are provided without warranty of any kind, either expressed or implied, including but not limited to time, money or goodwill arising from the use, operation or modification of the data. In using these data, you further agree to indemnify, defend, and hold harmless Kenai Peninsula Borough for any and all liability of any nature arising from the lack of accuracy or correctness of the data, or use of the data.



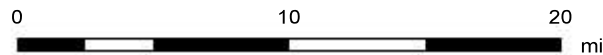
Legend

Regulatory Zoning  
KPB 21.18 Anadromous Waters

- Managed
- Unsubstantiated
- Exempt

Proposed Changes

- Managed (removed)
- Proposed (new)
- Proposed (re-substantiation)



NOTE: Every reasonable effort has been made to ensure the accuracy of these data. However, by accepting this material, you agree that the Kenai Peninsula Borough assumes no liability of any kind arising from the use of this data. The data are provided without warranty of any kind, either expressed or implied, including but not limited to time, money or goodwill arising from the use, operation or modification of the data. In using these data, you further agree to indemnify, defend, and hold harmless Kenai Peninsula Borough for any and all liability of any nature arising from the lack of accuracy or correctness of the data, or use of the data.