

2015 Annual Report



Kenai Peninsula College
UNIVERSITY of ALASKA ANCHORAGE

DIRECTOR'S WELCOME



KPC continues to be a robust institution and better serves our region every year because of our dedicated faculty and staff who do so much to provide students with quality education and training. But, it takes more than that.

We could not do all these wonderful things without the public's support. This ranges from our state legislators to the Kenai Peninsula Borough mayor and assembly, and the towns and villages that consider us "their" college (and we're glad they do). The continuing support from our neighbors is ever present on our campuses and extension sites, and the various communities we serve, including Anchorage. Because of this support, KPC has strong enrollments, increasing graduation and retention rates, and the percentage of our students graduating in high demand career fields continues to increase. We also continue to see increasing numbers of rural and Alaska Native students and

veteran students that choose KPC.

The state of Alaska is facing a fiscal crisis and funding for the university has been reduced the last two years and we expect that trend to continue for another 2-3 years. We are strategically planning for these reductions and while KPC may look a bit different in the coming years we will continue to serve you, our stakeholders and customers, in the outstanding way we have done for the last 51 years.

Over the last few years we've seen new buildings and/or renovations at the Kenai River Campus, Kachemak Bay Campus and Anchorage Extension Site. Due to the state's fiscal condition, we will not be seeing such major changes during the foreseeable future. However, while physical infrastructure is important, it is the resources inside the buildings that make the difference and are the key to our success.

You will read about all the accomplishments of our faculty, staff and students in the following pages. It is quite a volume so take your time and learn about all the wonderful things your college is doing, in large part due to your support. Now turn the page and learn about what we've done over the past year.

A handwritten signature in black ink that reads "Gary Turner". The signature is fluid and cursive.

Gary Turner
KPC Director/CEO



CONTENT

NEW FACES AT KPC	5
COLLABORATING WITH SCHOOL DISTRICTS	6
FACULTY AND STAFF ACCOMPLISHMENTS	10
STUDENTS MAKING A DIFFERENCE...MAKING A DIFFERENCE FOR STUDENTS	16
WORKING WITH BUSINESS, INDUSTRY AND ORGANIZATIONS	22
WORKING WITH THE COMMUNITY AND THE STATE	26
KENAI PENINSULA BOROUGH FUNDING GIVING/DONATIONS	29
NOTABLE GRANTS AND DONATIONS	30



New Faces at KPC



Drew Baker
KPC veteran services coordinator



Royce Bird
KRC financial aid clerk



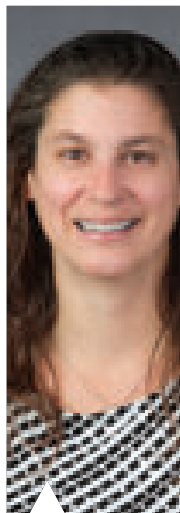
Sarah Frick
KPC educational technology team lead



Sandie Gilliland
KRC process technology coordinator



Erling Hofseth
ABE outreach coordinator



Ana Monyahan
UAA/KPC assistant professor of nursing



Anecia O'Carroll
KRC faculty office manager



Kathi Overpeck
KPC financial aid coordinator



Audrey Standerfer
KRC student health clinic nurse



Joe Thornton
KRC workforce development training coordinator



Shauna Thornton
KRC student union advisor



Rebecca Weaver
KRC assistant professor of instrumentation



Hugh Winston
KRC math specialist



KPC lost a much-loved employee when Pam Ward, KRC maintenance service worker III, passed away on May 12. She will be greatly missed.

A young woman with blonde hair, wearing a bright green cable-knit sweater, is focused on a task in a laboratory or classroom. She is leaning over a dark, reflective table. On the table, there is a white, porous biological specimen, possibly a skull or a piece of coral, which she is examining with a blue-handled tool. In the background, another person is partially visible, wearing a grey sweater and a dark jacket. The lighting is soft and focused on the woman and her work.

COLLABORATING WITH SCHOOL DISTRICTS

KPC has worked closely with the Kenai Peninsula Borough School District to offer dual-credit JumpStart classes to high school seniors. The program offers highly subsidized tuition rates for eligible students and is made possible by one-tenth mill property tax administered by the Kenai Peninsula Borough. This year, in order to expand the reach of the program, high school juniors were eligible for JumpStart tuition.

A record 220 students from Kenai Peninsula Borough School District high schools registered for KPC courses during the fall 2014 semester, almost doubling the previous year's registration of 113. The increase was primarily attributed to the JumpStart program being expanded to high school juniors for the first time. JumpStart enables students to pay \$55/credit for subsidized tuition versus the regular rate of \$174/credit. JumpStart students can take up to six credits per semester as a result of a one-tenth mill levy on Kenai Peninsula Borough property taxes that has been in place since 1991.

KRC Residence Life hosted the KPBSD high school counselor quarterly meeting in September.

The KRC Learning Center secured a new memorandum of understanding with Project GRAD to continue to coordinate outreach work to Tyonek and Ninilchik through a collaborative project entitled Project Access.

KRC financial aid personnel participated in a campus-based tour for more than 200 ninth grade students from Soldotna Prep Sept. 8-9. Students were provided grade/age-appropriate college financial preparation/information packets and packets were distributed to teachers with additional educator-specific information.



John Pollock, KPC student services director, and Krista Timlin, KRC career and community

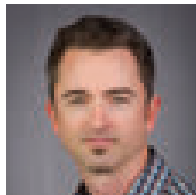
engagement center programs manager, along with the Career Day planning team hosted the 24th KPC Career Day on Jan. 30. The career exploration event was attended by more than 350 high school students from Kenai Central High, Soldotna High,

Nikiski High, River City Academy, Kenai Alternative High, Ninilchik High, Nikolaevsk School, Cook Inlet Academy, Connections and IDEA home school programs - along with KPC students and a handful of adult community members interested in changing careers. Seventy-four presenters provided information about 60 careers and 39 exhibitors from 22 organizations presented information about job opportunities, career development and preparation resources they offer. Forty-five KPC volunteers helped make Career Day successful.



Jeffrey Laube, KRC assistant professor of process technology, traveled in

Barrow in January to attend and present at the two-day North Slope Borough School District Career Expo. This event provided small workshops from industry representatives and educators. The Alaska Process Industries Careers Consortium funded the trip.



Toby Long, KRC assistant professor of chemistry, taught General Chemistry II as a community

engaged course in the spring semester. The students worked in conjunction with the KPBSD and Richard Webb, KPC instructional designer, to develop chemistry-based games. The effort, known as gamification, is intended to engage high school and JumpStart chemistry students on a different level. There was a student meet and greet on Jan. 22; eleven chemistry students from KPBSD joined KRC students to brainstorm ideas and gather input on the project. The games that

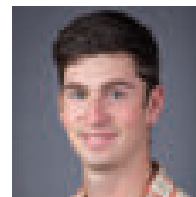
were developed focused on learning difficult concepts encountered in first-year chemistry.



KRC Residence Life hosted six Taste of College programs during the academic year,

up from just one in the previous year. Two programs were hosted for Project GRAD, one for Ninilchik High School, two for EXCEL (Kuspuk School District) and one for Russian Old Believers.

As part of the Kuspuk EXCEL Mini-Bridging Camp, the KRC Residence Hall hosted students from ten different Kuskokwim River villages to participate in a variety of activities that included visiting the Challenger Learning Center, developing life skills, learning to write a resume, practice job interviews, teambuilding exercises and career exploration. The students were from villages including Stony River, Chuathbaluk, Crooked Creek, Kalskag, Aniak, Emmonak, Marshall, Pilot Station, Alakanuk and Sheldon Point. Many of the students who participated in the program stated they did not want to go home and wanted to stay and attend KRC.



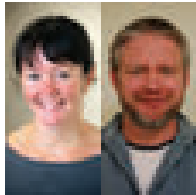
Sandie Gilliland, KRC process technology coordinator, along with Martha Pec, representative

from the Alaska Process Industry Careers Consortium, traveled to Naknek and Dillingham for two career fairs at the local schools. They presented information about working as process operators or instrument technicians. They highlighted KPC's process technology and

industrial process instrumentation programs as well as KRC facilities and residence hall. They brought a mobile process simulator module to provide a visual demonstration at the booth.

Clair Kochis, KRC assistant professor of mathematics, was invited to mentor Denise Trujillo, Anchorage School District iSchool team coordinator, so that Trujillo can assist ASD online math instructors with improving student success in online mathematics classes.

A scholarship for 2016-2017 Resurrection Bay Extension Site JumpStart students is being sponsored by Seward PTSA and funded by the Seward Community Foundation. Jackie Marshall, RBES coordinator, assisted in developing the scholarship and promoting it to students.



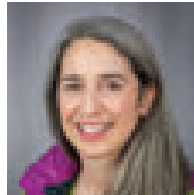
During the KCHS Job Shadow Day, Andrea Anderson, KRC assistant professor of

English, and Andy Veh, KRC associate professor of physics and math, hosted three students interested in careers as college English professors, astronomers and physicists. Another student, interested in becoming a potter, was hosted by Jean Steele, former KRC adjunct faculty, at the Kenai Fine Arts Center. Krista Timlin, KRC career and community engagement center programs manager, worked with the job shadow committee to place students at KRC, arrange transportation and accompany them at the luncheon at the end of the program.

The annual Project GRAD Summer Institute was held June 1-12 at KBC. Thirty high school students from Nanwalek, Voznesenka, Nikolaevsk,

Razdolna, Port Graham, Tyonek and Nilnilchik attended a variety of classes and field studies experiences organized by Project Grad and KBC Student Services staff.

Bettina Kipp Lavea, KRC associate professor of counseling, presented information regarding the high school student waiver process and the JumpStart program to groups of local high school students.



Jackie Marshall, RBES coordinator, collaborated with Kurt Simonsen, Alaska

Commission on Postsecondary Education College and Career Guide, on various projects at Seward High School.



Tiffany Haller, Seldovia High School basketball coach, contacted KPC advancement

with a mutually beneficial proposal. In anticipation of their annual regional invitational basketball tournament, Haller asked if the college would supply KPC-themed lanyards for the players and coaches ID badges. In return, KPC could place a full-color KPC promotional ad on the back cover of the tournament program and a full-color, full-page ad in the 2015 yearbook. Haller's son, currently a senior, received a UA Scholar's scholarship that he will use at KRC next year. KPC Student Services provided 100 lanyards and advancement produced the ads.

A photograph of two young men in a laboratory or workshop. They are both wearing white hard hats with a logo on the front. The man in the foreground is wearing a blue zip-up hoodie and glasses, smiling at the camera. He is holding a blue tool or component. The man in the background is wearing a dark jacket and glasses, looking towards the camera. The background is slightly blurred, showing an 'EXIT' sign and some equipment.

FIND YOUR PLACE

With the addition of the KRC residence hall, students from all over Alaska and the Lower 48 are finding their place at KPC. At the Kachemak Bay Campus, the Semester by the Bay program is drawing college students from other colleges and universities to study the unique marine environments of Kachemak and Resurrection Bays.

A photograph of two women in white lab coats working in a laboratory. The woman on the left is wearing glasses and has blue safety goggles around her neck. She is pointing at a document on a table. The woman on the right is looking at the document. The background is a blurred laboratory environment.

FACULTY & STAFF ACCOMPLISHMENTS

Dedicated faculty and staff who go out of their way to assist students are hallmarks of Kenai Peninsula College. Students are the motivating force for employees to deliver the highest level of customer service possible. Maintaining a culture of lifelong learning and continual process improvement keeps KPC moving in a positive direction.



Mike Hawfield, KBC associate professor of history and political science, was appointed by

Gov. Parnell to the Alaska Historical Commission. The commission advises the governor and legislature on Alaska's history and prehistory matters, oversees the historic preservation plan and performs many other functions related to state historical sites.

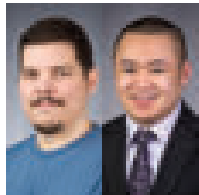
international peer-reviewed publication for physicians, nurses, social workers, attorneys, risk managers and ethicists.



Scott Downing, KRC assistant professor of English, attended the 2014

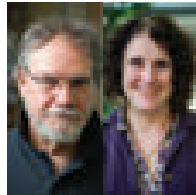
Assessment Institute Oct. 19-21. The institute is the oldest and largest event focused exclusively on outcomes assessment in higher education.

Freeburg Art Gallery. It featured photographs taken at the Dachau concentration camp in Germany. Fred Kiel, a German language interpreter and intelligence officer for the 42nd Division, answered questions about Dachau at the show's opening reception. After the closing of the exhibit, Kashi and David Wartinbee, KRC professor of biology, delivered a large piece from the show to the Jewish Museum in Anchorage.



Rob Lewis and Spring Sibayan, KRC IT technicians, attended a two day advanced Extron Training

in Anchorage.



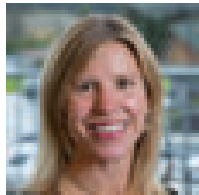
Mike Hawfield, KBC associate professor of history and political science, and Jane Haigh,

KRC assistant professor of history, attended the Alaska Historical Society/Museums Alaska meeting Oct. 2-5 in Seward. Haigh met with curators and staff of the state library and museum about exhibits planned for the new Alaska State Museum in Juneau. Haigh is a subject area specialist on the Gold Rush and on women in Alaska history.



Richard Webb, KPC instructional designer, presented at the Schools of the Future

Conference Nov. 7-8 in Honolulu, Hawaii. His presentation was entitled, "Towards an Ecology of Play: Gamifying Education." He also provided an overview of best practices in the use of gamification and games in education explaining how both are being used in two KPC classes, CS 109 (taught by Webb) and ACCT 201, taught by Tom Dalrymple, KRC assistant professor of accounting.



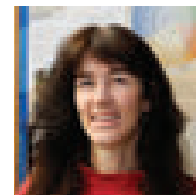
Debbie Boege-Tobin, KBC associate professor of biology, attended the national Animal

Behavior Society conference at Princeton University in July. Along with Rachel Rooney, KBC/UAA biology major, she presented a poster with accompanying video footage described as: "95 CM Coastal Northern River Otter (*Lontra canadensis*) Behavior and Olfactory Communication at a Latrine Site - RC Rooney, DD Boege-Tobin - University of Alaska Anchorage-KPC-KBC."



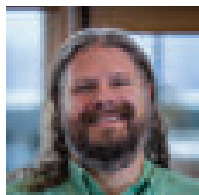
Alan Boraas, KRC professor of anthropology, led students from the Rise of Civilization

course and KRC staff members on an hour-long walk through Dena'ina culture and history on KRC property along the Kenai River.



Catherine Knott, KBC assistant professor of anthropology, networked with a group of

African language specialists and translators who are helping to translate Ebola prevention materials into multiple West African languages. A KBC student volunteered to translate some materials into Krio, used in Sierra Leone, for Translators Without Borders. Knott also presented a public lecture to 23 students and community members on "Ebola in West Africa: The Cultural, Political, and Economic Context."



Brian Partridge, KBC associate professor of psychology, had a paper published in the Healthcare

Ethics Committee Forum Journal entitled "Adolescent Pediatric Decision-Making: A Critical Reconsideration in the Light of the Data." The journal is an



Joe Kashi, local photographer and KPC Council member, presented a solo show

called "Fleeting Images" in the fall semester at KRC's Gary L.

FACULTY AND STAFF ACCOMPLISHMENTS



Dean Sundmark, KBC advisor, attended the National Association of Academic

Advisors (NACADA) Conference in October.



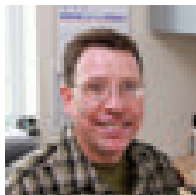
Leslie Byrd, KRC residence life coordinator, attended the Northwest Association of College and

University Housing Officers pre-conference board meeting in Salem, Oregon, where she was provided with more information for the 2016 regional conference. While the 2016 conference will be held in Anchorage, KRC is the host conference school.



Diane Taylor, KRC Learning Center director, served on a Northwest Commission on Colleges and

Universities accreditation team and did a site visit to Weber State University in Ogden, Utah.



Jeffrey Laube, KRC assistant professor of process technology, led a roundtable discussion at

the National Institute for Staff and Organizational Development's 37th annual International Conference on Teaching and Leadership Excellence Conference in Austin, Texas. The conference focused on community colleges and Laube spoke on "Connecting Education and Jobs."

Ken Waldman, KBC marine biology adjunct faculty, co-authored an article, "Stable Isotope Analysis of Vertebrae

Reveals Ontogenetic Changes in Habitat in an Endothermic Pelagic Shark," that was published in the Proceedings of the Royal Society B: Biological Sciences.

Tim Mullet, a KRC adjunct faculty member who teaches Fundamentals of Biology, was awarded his Ph.D. in biology from UAF.



Janice High, KRC associate professor of English, was chosen to serve on the selection committee for

the 2015 CIEE International Faculty Development Summer Seminar because of her international experience and studies. The committee chose one UAA faculty member to study in one of 19 countries around the world.



Paula Martin, KPC assistant director for academic affairs, served on the negotiations

team for the University of Alaska negotiations with the University of Alaska Federation of Teachers faculty union. The parties negotiated a contract that was ratified by faculty members and accepted by the UA Board of Regents.



Cam Choy, KRC associate professor of art, was one of 21 Notre Dame alumni sculptors to be

featured in "Notre Dame Alumni: Sculptors and Professors," a full color book that showcases the artists' work.

Steve Horn, KRC assistant professor of business, was

honored by the Soldotna Chamber of Commerce as the 2014 Volunteer of the Year.



Tom Dalrymple, KRC assistant professor of accounting and business and industry co-chair, gave a

presentation on gamification to the UAA Faculty Senate's sub-committee on research and creative activity at the Anchorage campus. The centerpiece of the presentation was the unveiling of the most recent two-transaction, 3-D version of the Abbaco. The 3-D version is the physical counterpart to the virtual, interactive, online model that won the College of Business and Public Policy's Innovation in Teaching and Learning award last year. The online version was produced with the assistance of Richard Webb, KPC instructional designer, and Jake Peterson of Designori, LLC. Dalrymple created his 3-D versions for the purpose of teaching visually impaired students accounting by touch. Dalrymple will present both versions of the Abbaco at the American Accounting Association's Annual Conference this fall in Chicago.

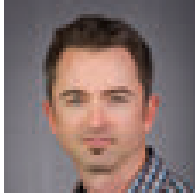


Paul Landen, KRC associate professor of psychology and KRC faculty-in-residence at

the KRC Residence Hall, attended the National Institute on the Teaching of Psychology, Jan. 3-6 in St. Petersburg, Florida. He presented on the faculty-in-residence program at the conference.

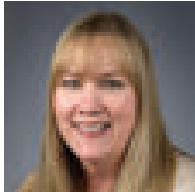
Scott Downing, KRC assistant professor of English, was selected by the UAA Office of Academic Affairs to attend the Association of American

Colleges and Universities General Education and Assessment Conference in Kansas City. The conference, titled "From Mission to Action to Evidence: Empowering and Inclusive General Education Programs," focused on moving toward meaningful cultures of assessment.



Toby Long, KRC assistant professor of chemistry, was elected to the advisory board for the

Challenger Learning Center in Kenai. He was also asked to chair the awards committee at the northwest regional meeting for the American Chemical Society in Anchorage in March 2016.



Sue Lee, KRC Student Services assistant, won a logo redesign contest for the Pacific Rim

Conference on English Studies. The UAA Department of English organizes the conference and facilitated the logo redesign contest. Lee won a gift certificate to the UAA Bookstore.



Susan Mircovich, KRC assistant professor of chemistry, and Suzanne Buie, Kodiak College

assistant professor of health science, provided a one-day faculty workshop entitled, "How to Teach Science Online," in May at Pueblo Community College in Colorado (all expenses paid).



The Friends of the Homer Library Board of Directors presented Michael

Hawfield, KBC associate professor of history and political science, with the 2015 Lifelong Learner Award. Hawfield was the guest of honor at the Celebration of Lifelong Learning held April 4 at the library. He has served on both KBBI radio and Hospice of Homer boards, and is currently serving on the boards of the Alaska Historical Society and the Friends of the McNeil River Brown Bear Sanctuary.



Steve Horn, KRC assistant professor of business, was certified as a Quality Matters Master

Reviewer.



Christina Stuive, KRC assistant professor of counseling, was awarded the 2015

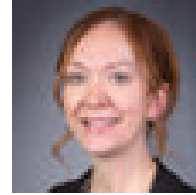
Outstanding Alumni Award for the Mu Beta Chapter of Chi Sigma Iota. The award was established to recognize an outstanding counselor in the counseling profession.

Toby Long, KRC assistant professor of chemistry, was accepted as a 2015-2017 UAA Technology Fellow. During this two-year fellowship, he will work with cohort members to implement use of open education resources in the classroom.

Scott Downing, KRC assistant professor of English, and Kathleen Voge, UAA College of Business faculty, presented a workshop on the use of ePortfolios in program

assessment as part of the UAA Academic Assessment Spring Workshop series on April 3 in Anchorage.

Richard Webb, KPC instructional designer, was recertified as a Quality Matters Master Reviewer.



Sarah Frick, KPC lead instructional designer, was certified as a Quality Matters Coordinator,

Course Review Manager.

Susan Mircovich, KRC assistant professor of chemistry, earned the Recognition of Mastery in Online Science Labs designation from the Online Learning Consortium.



Terri Cowart, KRC Learning Center instructor, was selected to be a presenter at the Community

College National Center for Community Engagement (CCNCCE) conference in Scottsdale, Arizona. Her presentation, "Necessary Education Technology and Skills (NETS)," described the workshop she developed at KRC, which will be offered again in the fall. The workshop assists current or future students with understanding how to prepare and enroll in college, training programs, and/or enter high-demand career areas. The class was created as part of a state project called Oregon Pathways for Adult Basic Skills Transition to Education and Work Initiative and from seminar topics taught in the Guidance A150 course.

Diane Taylor, KRC Learning Center director, served as a co-leader and steering committee member at the UAA National

FACULTY AND STAFF ACCOMPLISHMENTS

Coalition Building Institute's Retreat at the UAA Anchorage campus in May.

Sharon Christopher, KRC AmeriCorps member, coordinated a volunteer appreciation gathering to honor all of the KRC Learning Center's community volunteers in May. She also served with other representatives from the community on the allocation committee for Kenai Peninsula United Way.

Jeffrey Laube, KRC assistant professor of process technology, had his industrial petrochemical process course certified for meeting the rigorous standards of the national Quality Matters rubric. Laube now has had four of his courses certified by Quality Matters.



Janice High, KRC assistant professor of English, had her Communication A111 course certified for

meeting the Quality Matters Peer Review Certification program.

KPC eLearning Week, held May 11-15, presented seven workshops for seven faculty and staff that focused on everything from course design to multimedia tools. Some workshops were live, some were video-conferenced to KBC and some were offered online via web conferencing.



Carol Swartz, KBC director, facilitated and helped plan the May 26 Homer visit of His Majesty (HM),

the King of Norway. She initially toured the ambassador of Norway, consul and staff around Homer and arranged their visit to Tutka Bay Lodge during an

afternoon. Swartz then arranged for two local U.S. Fish and Wildlife Service and Kachemak Bay Research Reserve researchers to discuss the impact of climate change on Kachemak Bay with the King. Swartz accompanied the Norwegian group, the Homer mayor and 14 others from the press and security to Tutka Bay Lodge for lunch and discussion on the local impacts of climate change. At his invitation, Swartz attended HM's and others' presentations regarding "The U.S. and Norway in the Quest for Arctic Knowledge" at the Alaska World Affairs Council luncheon in Anchorage.

Sondra Shaginoff-Stuart, KPC rural and native student services coordinator, attended the UA Indigenous Studies Gathering May 11-12. Staff and faculty from throughout the UA system were in attendance. The conference, the first of its kind, brought together the different native and rural programs' support staff to streamline ideas and gain insights into what is working. They continue to collaborate.

Christina Stuve, KRC assistant professor of counseling, served on the UAA undergraduate academic board subcommittee for curriculum workflow and participated in a faculty-facilitated student discussion of death and suicide at residence halls.

Bettina Kipp Lavea, KRC associate professor of counseling, served on the UAA university college task force.

Diane Hirshberg, president of the UAA faculty senate, visited KRC on Oct. 10 to meet with faculty from both campuses (via video-conference to KBC). It was the first visit the faculty senate president had made to KPC since 2002.



Dave Atcheson, KRC evening coordinator and adjunct instructor, conducted numerous

readings and book signing events in Alaska and the Lower 48 showcasing his latest book, "Dead Reckoning: Navigating a Life on the Last Frontier, Courting Tragedy on Its High Seas." Atcheson is also the author of "Fishing Alaska's Kenai Peninsula: A Complete Angler's Guide" and "Hidden Alaska: Bristol Bay and Beyond."

Andy Pfeiffer and Richard Webb, KPC educational technology team members, co-organized and attended the Serious Fun: An Educational Games Gathering conference on April 17 in Anchorage, which was attended by more than 100 UAA faculty and staff.

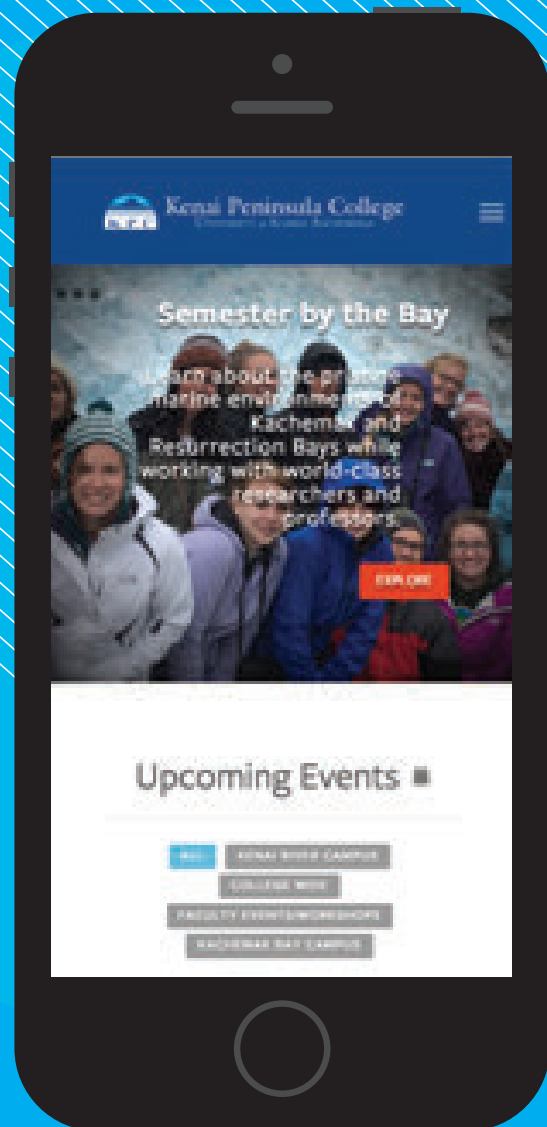
Paul Landen, KRC associate professor of psychology, presented a workshop, "Respecting Sexual Diversity," at Central Peninsula Hospital in Soldotna. The workshop was offered for continuing education units as part of the hospital's behavioral health series and was attended by more than 45 people.

Andy Pfeiffer, KPC educational technology specialist, and Spring Sibayan, KRC IT specialist, attended Cisco's Technology Summit on Oct. 30 in Anchorage. They attended presentations on the newest technologies and how they can be used within current systems. In between sessions, they connected with vendors specializing in network security, telecommunications and videoconferencing.

New Website Optimized for All Devices

Suzie Kendrick, KPC advancement programs manager, Jesse Graves, KPC webmaster, and Hannah Parker, KPC advancement assistant, created a new KPC website from the ground up with no outside contractor assistance. The user-friendly site, created within an open source content management system, is optimized to be a mobile first, responsive design that can be viewed on all devices with limited degradation to the users' experience.


www.kpc.alaska.edu





STUDENTS MAKING A DIFFERENCE... MAKING A DIFFERENCE FOR STUDENTS

Being a small college, students form close bonds both personally and intellectually. Often student cohorts form within academic disciplines providing support to one another as they move toward earning their degrees. Helping one another and in turn, reinforcing difficult concepts to each other is a powerful tool KPC students leverage every day.



KPC provides the framework for students to achieve whatever goal they set for themselves. With a student body ranging from 15-80 years old, every classroom discussion brings forward a wide-range of opinions and experiences.

Spaces within the KRC Brockel building used by the art department, Learning Center and the library were assessed for current and future needs. Initial project approval was received and Architects Alaska was hired to provide design team services for the space renewal. Site visits and meetings with users were held in the fall. Actual renovation is dependent on future funding.



KBC's Semester by the Bay program attracted 10 full time students last fall from the University

of North Carolina and University of California. Students took classes in marine mammal biology, marine biology, ornithology, ichthyology, and also participated in internships (10-20 hours a week) with area partnering agencies that helped provide housing. During their first field studies trip on Kachemak Bay, they observed a humpback whale, sea otters and a coastal river otter haul out. Their internship projects included marine mammal skeletal articulations (harbor seals, Steller sea lion, a young killer whale, and sea otters), plankton identification, sea otter foraging ecology and live/dead otter responses, including necropsies. They also articulated a beluga whale. These activities were coordinated by Debbie Boege-Tobin, KBC associate professor of biology.

KRC facilities staff upgraded lighting fixtures on campus buildings to LED fixtures over the summer. The bulk of the exterior lighting has now been changed to more energy efficient LED fixtures. Recording video cameras were added to vehicular entrances.

All computers in the KRC Riverview commons were replaced during the summer with new Dell all-in-one computers greatly reducing wire clutter and providing more work area.

KRC IT and facilities staff installed new security cameras outside of the CTEC building. Rob Lewis, KRC IT technician, worked with the vendor to fine tune the entire security camera system.

KRC IT services replaced all the computers in computer lab (Ward room 117) and replaced older monitors. The computers that were removed will be repurposed around campus as needed and any that remain will be offered for sale to students during the fall semester.

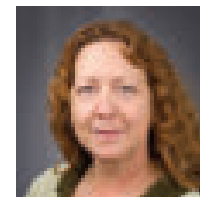
KRC IT services installed ceiling microphones in all video conference classrooms to replace table microphones, resulting in improved sound quality for video-conferenced classes.

Erays Plumbing and Heating of Homer completed the conversion of the oil burners to natural gas burners in KBC's Bayview and Pioneer Halls.

Earhart Roofing of Anchorage replaced the roof on the KRC Goodrich building.

Christoph Barmetler, KRC Congress-Bundestag Youth Exchange (CBYX) student, returned to Germany in July 2015. While attending KRC, Barmetler contributed 40 hours of civic engagement including activities such as tutoring, serving lunch at the Food Bank and assisting with fundraisers. He also worked part-time in the KRC facilities department. The program was supported by Liz Solomon and Joe Williams, as the host family who graciously welcomed Barmetler into their home for the year.

166 veteran students, across all academic programs and VA educational benefit chapters, attended classes at KPC. This represented a 30 percent increase from the previous fall, with 67 of those students pursuing a degree or certification. Of those, 20 were enrolled in the process technology program, 15 in occupational safety and health, and 14 in the associate of arts program. The remaining categories of veteran students are pursuing instrumentation, paramedic technology, welding and business areas of study. These veteran students were enrolled in 1,216 course credits, an average of 7.3 credits per student. The 99 remaining guest veteran students were enrolled in classes at KPC in pursuit of educational objectives at other UA campuses. KPC's guest veteran student population currently consists of 86 students from UAA's Anchorage campus, eight from Mat-Su College, two from Kodiak College, two from UAF and one from UAS.



Kathy Becher, nurse practitioner and KRC student health clinic coordinator, attended the

Alaska Nurse Practitioner Association Conference in September. Becher learned new screening and treatment ideas, collaborated with other practitioners and updated referral sources for Anchorage specialties in an effort to provide the best care for KPC students.

During the fall 2014 semester, there were 227 students who self-identified as Alaskan Native/American Indian students. Sondra Shaginoff-Stuart, KPC native and rural student services coordinator, assisted 75 of them, as well as other students, with advising, scholarships and tuition assistance.

More than 30 KBC students received flu shots administered by KBC nursing students. The effort was sponsored by the KBC Student Association and vaccines were provided by the Student Health Clinic located at KRC.

The Damon Memorial Fund Council had their annual meeting in October. The committee voted to award two full-year scholarships, capped at 13 credits/semester, and provide \$2,000 to the Anna Goodrich Humanities Program to support the KPC Showcase series during fiscal year 2016. There was \$804,855 in the foundation endowment fund in fiscal year 2014. College Council members Hal Smalley, general representative, and Mike Frost, financial services representative, serve on the foundation committee as required in the administrative agreement.

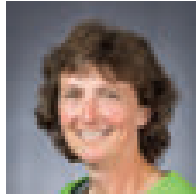
Maximum enrollments for many KPC classes were increased by two students, effective in the spring semester, in an effort to increase tuition revenue. Writing-intensive English and communication courses and classes being held in rooms unable to accommodate additional students were not included in the enrollment increases. During the previous year, many faculty had increased their maximums by up to five additional students. Courses that had already increased maximum enrollments were not affected.



KBC nursing and CNA students volunteered at the Homer Health Fair on Nov. 1 staffing

two booths, providing health information and blood pressure measurements. More than 1,300 people attended the event. During the screening process, seven individuals were referred

to physicians for hypertension and one to South Peninsula Hospital's emergency room. Student recruitment materials for nursing and CNA classes were made available to the public.



Tammy Farrell, KRC assistant professor of process technology, developed the

Process Technology Club at KRC in October. Farrell implemented ideas gained from a summer course taken at Bellingham Technical College, in Washington. The purpose of the club is to facilitate communication between instructors, students and local industry professionals to better prepare students for current industry positions. Experts in the field are invited to make presentations, provide demonstrations, and/or challenge students with actual everyday problems that occur in the field, while emphasizing the need for education and effective workforce preparation.

KRC professors were treated to a faculty appreciation tea/luncheon on Nov. 7. Phi Theta Kappa Honor Society, the largest and oldest honor society for students in two-year colleges, hosted the lunch to recognize all the effort KRC faculty provides each semester. PTK members appreciate the wide variety of instructional opportunities at KRC and the emphasis on academic excellence that the faculty promotes.

KPC's financial aid and advancement departments implemented an "Attitude, Gratitude" project focusing on raising awareness among scholarship recipients about the importance of thanking donors. Scholarship recipients are strongly encouraged to reach out to donors with a letter reflecting

the importance of receiving a scholarship and how it has contributed to achieving their educational goals.

Four members of the UAA Confucius Institute traveled to KRC: Fen Chen, culture program coordinator and instructor; Linlin Lu, instructor and cultural event planner; Ming Lu, co-director; and Annie Zeng, co-director. Min Lu was a guest speaker in Dr. Paul Landen's eastern philosophy class and the team presented an overview of Confucius Institute programs in the KRC Residence Hall's multipurpose room. The event was open to the public.

Owen Brewer, KRC process technology student, was named as the student representative to the newly formed Tesoro Alaska Refinery Community Advisory Panel. The CAP serves as an interface between the management of the facility and local citizens. The goal is for the public to have a better understanding of refinery operations and plans and for the corporate owners and operators of the refinery to better understand community concerns. Brewer, who grew up in Nikiski, has worked as a contractor in Tesoro's lab, as a roustabout in the field, and holds a degree in zoology.



A new free e-portfolio platform is now available for all KPC faculty,

students and alumni to build e-portfolios to use for a variety of purposes (e.g. employment). A number of KPC faculty and the educational technology team have worked together to implement the service.

English as a Second Language (ESL) classes continue to be offered in the KRC Learning Center. Students can join small groups, attend classes or receive

one-on-one tutoring. Sara Hadfield, one of several KRC ESL instructors, reported that several ESL students have moved on from the program; three students enrolled in preparatory English and one student enrolled in introduction to composition. One student began the KRC EMT program. Another student had completed CNA training and now works at Heritage Place in Soldotna, and another had started the CNA program.

SkillsUSA is a career and technical student organization that focuses on leadership, technical, vocational and employability skills. Alex Clark, a welding student in his second semester at KBC, and also a Homer High School student, finished third in a welding competition during the Kenai Peninsula SkillsUSA event. Larry Staehle, KBC adjunct welding instructor, indicated that the competition features students enrolled in the Kenai Peninsula Borough School District. Regional winners move on to the state competition and, if successful, on to the national competition.

Maria Kulikov, a KBC JumpStart student, who also serves as the student representative on the KPBSD School Board, was honored by Haven House as Homer's Young Woman of Distinction. She was also a finalist in the statewide poetry slam contest.



KBC's Kids2College program culminated on April 17 when eighteen fifth and sixth

graders from Chapman School and fifty-three sixth graders from West Homer Elementary came to campus. Kim Frost, KBC Student and Enrollment Services manager, organized the event so that students participated in six

lessons designed to increase early college awareness and discover what they can do to prepare for college. Students also learned about financial aid and how post-secondary education can help expand future job options.

Eugene Rohl, KRC assistant professor of mathematics, and a 1982 Air Force Academy graduate, began Air Force Academy Liaison Officer training during the spring semester. As an ALO, he will conduct outreach programs on the Kenai Peninsula, perform candidate interviews and help prospective cadets through the admissions process. He can also provide counseling for the Air Force Reserve Officer Training Corps commissioning program.



Dorothy Gray and Andrea Anderson, KRC

assistant professors of English, partnered to increase membership in the KRC chapter of Phi Theta Kappa. Their efforts resulted in membership growing to more than 40 students. Thanks to the chapter's fundraising efforts, PTK offered a \$500 scholarship to a chapter member for fall semester.



The Kachemak Bay Campus Student Association and Kim Frost, their staff advisor, coordinated

activities during the last two weeks of the spring semester, including two game nights and a movie presentation, provided two lunches from local restaurants and shoulder massages during finals week, co-hosted the student art show, hosted the commencement reception and provided an end-of-year student barbecue in the parking lot, with grilled halibut and chicken tacos catered by a local restaurant.

KPC collaborated with Kodiak College and UAA Anchorage campus to purchase a DocSoft server that will help streamline captioning of course videos.



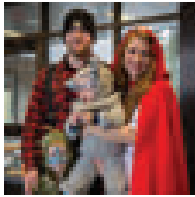
KPC purchased a video hosting and streaming

solution called Kaltura. The platform offers a YouTube-like experience for video management and ties into the Blackboard learning management system. The Kaltura system was put into production during the summer semester with training available for faculty prior to the fall semester.

KRC Counseling and Advising, in conjunction with Student Services, hosted another Set Up for Success freshman orientation event in early fall. Students received essential information, including sessions on Blackboard, UAOnline, DegreeWorks, student Webmail and Financial Aid.

In order to increase retention, Veterans Administration funds for each veteran enrollment certification submitted are being re-invested to improve the quality of veteran students' experiences at KPC. The veteran student lounge now has a coffee bar and light snacks. The students can enjoy a quiet, inviting place to study or relax between classes.

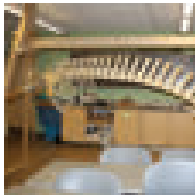
The KPC Rural and Native Student Services office assisted students with rides to the Dena'ina Wellness Center in Kenai for routine checkups and a few non-life threatening emergency visits. For KRC rural students, it is important to explore outdoor opportunities in the local area. Sondra Shaginoff-Stuart, coordinator of the program, facilitated a berry picking field trip, butchering a seal for the local tribe and attending a Native foods event.



During the last week of October, the KRC Student Union held a Spirit Week that culminated with

Halloween. Themes for each day included the following: Monday: zombie day; Tuesday: celebration of the Latin holiday known as Day of the Dead; Wednesday: heroes versus villains; and Thursday: animated movie day. On Halloween, the KRCSU participated in the Kenai Boys and Girls Club's "Trunk or Treat," with assistance from the KPC paramedic program.

A pilot program was implemented during the fall semester to increase access to electronics courses for process technology students at KPC's Anchorage Extension Site. This program was designed to deliver the course content lectures via distance and Blackboard, with KPC faculty taking the hands-on labs to the students in Anchorage each month.



KBC held a celebration in December when the fully articulated Stejneger's beaked whale

skeleton was completed. Twelve students worked on the project during the past year. The culmination of the three-year process was the hoisting and hanging of the whale skeleton in KBC's Learning Resource Center.



November was Alaska Native/ Native American Heritage Month. Sondra Shaginoff-

Stuart, KPC rural and native student services coordinator, and the KRC Learning Center scheduled events on every

Thursday during the month. Events included a fry bread social, artist demonstration with Rochelle Adams (Gwich'in artist), language gathering and beading lessons in the Dena'ina language, and a presentation of the movie, "This May be the Last Time." The events were supported by a grant from the UAA Diversity Action Council, funding from the KPC Showcase and the Multicultural Consortium. Collaboration with many different KRC departments and the Kenaitze Tribe was instrumental to the events' success.

The KBC Student Association collected more than 200 pounds of food donations for the Homer Food Pantry.

The KRC Student Union hosted a student/community holiday party in December attended by more than 100 guests. Students, faculty, staff and the community enjoyed photos with Santa, hot cocoa and cookies. Tom Dalrymple, KRC assistant professor of accounting, played the role of Santa.

KRC Residence Life staff began planning and preparing to complete a CAS (Council for the Advancement of Standards in Higher Education) Assessment of the residence life program. This is a self-study to identify what's being done well and what needs to be improved. Information collected from the self-study will be utilized to develop a strategic plan and to ensure that the residence life program is consistent with KPC's strategic plan. The assessment will take place during the upcoming academic year.

KRC's Gary L. Freeburg Art Gallery hosted "Rarefied Light," the long-running annual juried exhibit of Alaskan photographic artists. The Freeburg Gallery is one of three venues in the state that hosts the exhibition. Alisah

Kress, a KRC art student, was one of 69 photographers chosen from 500 applicants statewide to participate in the show.



The Alaska Native Oratory Society (AkNOS) regional event was hosted in April in the KRC

Brockel Commons. The public event was organized by the KRC Learning Center and KPC's Rural and Native Student Services office. Jack Dalton, storyteller and playwright, was the event's master of ceremonies. This was the seventh year the event was held on campus. Participants included students from KRC, Alaska Christian College and community members. The event was featured in both the Peninsula Clarion and Redoubt Reporter newspapers.

The KRC Student Union, in conjunction with the UA Coalition of Student Leaders, embarked on a statewide postcard campaign that netted more than 150 post cards of support for the University budget. The cards were delivered during one of the KRCSU's many testimonies to the legislature in regard to the University of Alaska budget.



WORKING WITH BUSINESS, INDUSTRY AND ORGANIZATIONS

KPC prides itself on listening to what business and industry groups want in terms of current and future workforce needs. Many KPC faculty have had previous employment in the private sector and they bring those practical experiences into the classroom to help students apply concepts to the real world.

Members of the Resource Development Council toured KRC's CTEC training facilities. Tom Dalrymple, KRC assistant professor of accounting, and Henry Haney, KRC assistant professor of process technology, led two groups through the electronics, instrumentation and simulator labs. They also provided a demonstration of Simtronics, the process simulation software being used in KPC's process technology program.



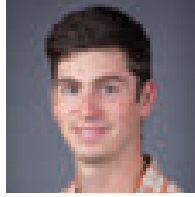
Jeffrey Laube, KRC assistant professor of process technology, attended the North American

Process Technology Alliance (NAPTA) conference where he accepted a plaque acknowledging a three-year endorsement of KPC's programs as meeting their highest standards. The UAF CTC process technology program also received the endorsement. KPC and UAF are now among 22 colleges across North America that are NAPTA endorsed to teach process technology.

Laube also presented a workshop to 200 educator and industry trainers on developing process technology training at the Instructor Skills Conference. At prior conferences, Laube has provided workshops entitled, "Distance Education in Process Technology Courses" and "Developing Hybrid Process Technology Troubleshooting Courses."

Jeffrey Laube, KRC assistant professor of process technology, conducted a four-hour Agrium facility tour for PRT students from both AES and KRC in September. Of the 22 students that attended, eight were women (the highest number of women to attend an Agrium tour to date).

About a third of the students in attendance came from AES. Robert Goerdts, KRC resident advisor, arranged car-pooling from the KRC Residence Hall.



Sandie Gilliland, KRC process technology program coordinator, arranged for Tabetha Toloff,

Alyeska Pipeline Human Resources representative, to meet with KRC students on Sept. 8. Alyeska had posted a number of pipeline technician positions and Toloff explained the application process. Alyeska supplied pizza and offered tips on building effective resumes.

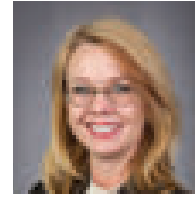


Carol Swartz, KBC director, met with the Homer Marine Trades Network to form an

education advisory group to plan and offer new non-credit marine technology and vessel repair training during the spring 2015 semester. The City of Homer passed a resolution in support of the new Alaska Maritime Workforce Development Plan.

KBC offered a 32-hour, non-credit aluminum fabrication class, in partnership with Bay Welding (donating time/materials), with eight participants over two weekends in November.

Gov. Parnell appointed Phillip Galloway, of Wasilla, to the Alaska Safety Advisory Council, which promotes safety to reduce accidental injury and death. Galloway was an adjunct faculty member in KPC's Occupational Safety and Health degree program and taught at AES. Galloway is the director of loss control at ARECA Insurance Exchange/Alaska Power Association.



Rebecca Weaver, KRC assistant professor of industrial process

instrumentation, and Allen Houtz, retired KRC professor of industrial process instrumentation, presented a certificate course on control loop tuning strategies on April 1-2 at the 17th Arctic ISA Exhibit and Symposium in Anchorage.

Jeffrey Laube, KRC assistant professor of process technology, presented "Impacts of Success: The Renaissance Continues," at the Industry Outlook Forum.



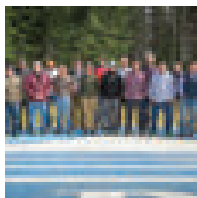
The Alaska Support Industry Alliance held their monthly meeting on March 20 at

KRC. The Alliance represents more than 50,000 Alaskan workers as a nonprofit trade association of more than 500 businesses, organizations and individuals that provide products and services to the oil, gas and mining industries. The goal of the meeting was to provide networking opportunities for students and prospective employers.

Cook Inlet Energy hosted a daylong tour of their West MacArthur River Unit Production Facility and their Kustatan onshore support facility for the Osprey Platform for five KPC process technology students and one instructor. CIE provided a chartered flight from Nikiski to their Trading Bay production facilities. The tour helped students get an idea of what it is like to work in a remote production facility.

The KRC Instrumentation and Electronics Club attended the 2015 Shell Instrumentation Student Games, a collaborative competition between students from schools across western Canada and the United States. During this weekend event, mixed teams completed a series of four instrumentation/automation tasks. Task areas ranged from on-line flow measurement calibration, control valve maintenance and calibration, electrical circuit design and soldering, online process control and DCS DeltaV programming and control.

KRC hosted a booth at the 14th annual Kenai Peninsula Job and Career Fair held March 25 at the Old Carrs Mall in Kenai. Almost 700 job and career seekers attended the fair, including 119 high school students. More than 70 visitors stopped by the KPC booth (staffed by 12 rotating staff and faculty volunteers) asking about KPC degree and certificate programs or specific courses in preparation for new careers, retraining or to upgrade skills. Some visitors also inquired about becoming adjunct instructors or joining a temporary staff pool.



The Kenai River Guide Academy completed its 33rd class on May 1 and has graduated 717 students since

the program began in March 2006.

The KRC Career and Community Engagement Center (CCEC) developed a partnership with the Alaska State Troopers' Soldotna Post to help prospective local candidates succeed as Alaska State Trooper and Wildlife Trooper applicants and new hires. Lt. Dane Gilmore, AST's deputy commander, and Krista Timlin, CCEC programs manager, met with four KPC students to

strategize next steps for each of them in their career plan/process. Gilmore followed up with two additional students who could not attend the Sept. 26 meeting.

The KRC Learning Center continued to collaborate with Alaska Christian College, Amundsen Educational Center, Alaska Division of Vocational Rehabilitation, Kenaitze Indian Tribe, Alaska Division of Public Assistance, LOVE, Inc. and the Independent Living Center. Additional collaborations included UAA Alaska Native Studies, UAA Women's Studies and the UAA Confucius Institute.

Sandie Gilliland, KRC process technology coordinator, hosted representatives from BlueCrest Energy LLC and Tesoro for lunch and tours of the KRC Career and Technical Education Center and Residence Hall on Jan. 29-30.

KRC was the venue for the U.S. Veterans Administration's quarterly town hall meeting on the peninsula that was attended by 20 veterans. The VA plans to continue to use KRC as their venue for future meetings.

The KRC Student Union and KRC Showcase partnered with community members from the League of Women Voters, Kenai River Watershed Forum, Cook Inletkeeper and other concerned community members, for a Climate Change in Our Backyard event attended by more than 108 people on March 28. Scientists from around the peninsula discussed topics ranging from water temperature to fish habitat. The Mayor's Forum included representatives from Seward, Kenai, Soldotna and Homer, as well as Kenai Peninsula Borough Mayor Mike Navarre.

Find your
place at
KPC.



A man in a dark suit and patterned tie is speaking at a wooden podium. The podium features a logo with a mountain and water scene above the letters 'KPC'. The background is a large window with a view of trees.

WORKING WITH THE COMMUNITY AND THE STATE

KPC embraces the concept of service-learning and many faculty members incorporate components into their course curriculums that help students understand the connection between what they are learning and how it can be applied outside the classroom. This kind of innovation has far-reaching benefits for both students and our communities.



Because the borough, school district and the college all had their beginnings in 1964, the

organizations collaborated on a shared celebration of the fiftieth anniversary benchmark. Sharing resources and working together is something the groups have done since their inceptions. The fiftieth anniversary community celebration was held on Aug. 14 at KRC in Soldotna. More than 500 people attended a free barbecue, enjoyed live entertainment, presentations, historical photo displays, tours and children's activities.



Alaska State Sen. Peter Micciche, representing District O, presented Jean Brockel, former

KPC adjunct music faculty and wife of KPC's founding Director Clayton Brockel, with a legislative proclamation recognizing the college's milestone occasion.



Volunteers from all three organizations contributed to the historic event with KPB's Brenda

Ahlberg (left), KPC's Suzie Kendrick (middle) and KPBSD's Pegge Erkeneff (right) teaming up to coordinate the anniversary celebration.



The nationally known Kachemak Bay Writers' Conference, organized and coordinated by

KBC staff and faculty, was held June 12-16 with more than 130 participants. In its fourteenth year, there was a

post-conference poetry workshop June 16-18 at Tutka Bay Lodge and 25 high school students attended a pre-conference young writers' workshop on June 12.



U.S. Sen. Lisa Murkowski visited KRC on April 3, held a town hall type meeting in the Riverview

commons and received tours of the Career and Technical Education Center and Residence Hall.

The KRC Student Union (KRCSU) built a float and participated in the annual Christmas Comes to Kenai parade. Mackenzie McGee, KRCSU student representative and Shauna Thornton, KRCSU advisor, were quoted by the Peninsula Clarion about why it's important for the college to participate.



Last August, Tom Dalrymple, KRC assistant professor of accounting, held a three-day

Alaskan Commemorative Coin Show at the Kenai Peninsula Fair in Ninilchik. The 250-piece collection spanned the years from statehood through the centennial (1958- 1967) and included examples from Nikiski, Soldotna, Tustumena, Seward, Moose Pass, Anchor Point, Seldovia, Homer and more. The commemorative coins drew a lot of interest and provided the opportunity for Dalrymple to highlight the advantages of attending KPC in Homer, Seward, Soldotna or Anchorage.

As part of UAA's celebration of National Hispanic Month, KRC hosted a public showing of the documentary "Latinos Beyond Reel: Challenging a Media

Stereotype." The film was shown in beginning and intermediate Spanish classes, in partnership with Instructor Eva Canedo.

Sen. Mark Begich visited KRC on Oct. 21 and toured the Career and Technical Education Center and the renovated paramedic and nursing labs. Begich also addressed students, faculty and staff in an open forum.

Carol Swartz, KBC director, was invited by the Homer Public Library to serve on a panel to discuss KBC's business and entrepreneurship resources, classes and workshops.

More than 100 people attended KRC's fall health fair, taking advantage of low-cost blood tests and other health screenings. Ana Monyahan, KPC/UAA assistant professor of nursing, and her nursing students volunteered to measure blood pressures, provide biometric and vision screenings and provide phlebotomy services. Ten local health care vendors provided health information regarding their services in the community.



Jane Haigh, KRC assistant professor of history, gave a talk about Alaskan pioneer Fannie

Quigley's Kantishna gardens at the Central Peninsula Garden Club meeting in December. Quigley was a pioneer mining woman who lived in the remote Kantishna mining district, now at the end of Denali Park Road, for 40 years. She was famous for her enormous gardens, grown under very challenging conditions, and for her hunting, trapping and mining activities.

KPC was represented at the First Alaskans Institute Elders and Youth Conference in October at the Dena'ina Convention Center

in Anchorage with a mission to recruit students and raise awareness about the college. Two students pursuing welding certificates, Paul Pingayak from Hooper Bay and Michael Kanuk from Napakiak and Kipnik, shared their KPC experiences with attendees. Sondra Shaginoff-Stuart, KRC rural and native student services coordinator, and Sandie Gilliland, process technology program coordinator, provided staff support at the event.



KPC also had a high-profile booth at the Alaskan Federation of Natives Convention

following the Elders and Youth Conference. In addition to the students attending the youth conference, Zoia Kernak, a human services major from Tuntutuliak, also volunteered. Chris Stuive, KRC assistant professor of counseling, and Don Eide, KRC IT technician, shared the booth duties and promoted the college. For the first time, KRC Residence Life coordinated a day trip for KRC students to attend the convention.

Five KPC faculty and one staff member were selected as service-learning scholars for spring 2015. Cam Choy, KRC associate professor of art, and Steve Horn, KRC assistant professor of business, were selected as faculty fellows; Terri Cowart, KRC ABE/GED instructor, served as a faculty researcher; and Paul Landen, KRC associate professor of psychology, Scott Downing, KRC assistant professor of English, and Christina Stuive, KRC assistant professor of counseling, were selected as faculty mentors. Each faculty fellow and researcher received a \$750 stipend to attend a workshop series on service-learning pedagogy, for either

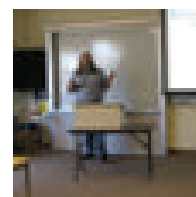
incorporating service-learning activities into at least one course within a year's time or for preparing a formal conference presentation/paper on a service-learning theory/practice topic, and for meeting with their mentor. The faculty mentors received a \$500 stipend for participating in the workshop series, and mentoring faculty fellows. The theme of the program was inclusive learning. The spring program was co-facilitated by Stuive and Krista Timlin, KRC career and community engagement center programs manager.

Project Homeless Connect took place on Jan. 29. The KRC human services class, taught by Diane Taylor, adjunct faculty and KRC Learning Center director, supported the event as part of a service learning component to the class. Students assisted with intake, served as escorts, assisted with the clothing and café, and helped where needed. A table was staffed by Erling Hofseth, ABE outreach coordinator, who shared information about ABE classes, GED opportunities, KPC degree programs and how to get started in college.

As part of the Homer Art and Culture Alliance, KBC was one of the winners at the 2015 Annual Arts Awards, as announced by the Homer Council on the Arts (HCOA). The awards were presented at HCOA's annual meeting in January. The Homer Arts and Culture Alliance, formed in 2012, were recognized by HCOA for its arts leadership and advocacy work. The alliance consists of KBC, HCOA, Bunnell Street Arts Center, Pratt Museum and Pier One Theatre.

A Winter Concert of Traditional Irish Music was presented by the KRC Multicultural Consortium, the KPC Showcase and the KRC Student Union. The free event was attended by students, staff and the public, with nearly 200 in attendance.

Debbie Boege-Tobin, KBC associate professor of biology, received \$1,500 for ongoing community research efforts in her Fundamentals of Biology II lab course. This involves an annual data collection survey of the intertidal zone organisms of Kasitsna and Jakalof Bays, and the sampling of needles of healthy and spruce-bark beetle infected trees uphill from the Kasitsna Bay Lab, and on the north side of Kachemak Bay in the Homer Demonstration Forest. These efforts are part of an ecological assessment of Kachemak Bay.



Brian Partridge, KBC associate professor of psychology, presented and coordinated an April lecture

entitled, "Heroin Hits Homer: The Science of Heroin." Partridge collaborated with three Homer-area healthcare professionals to prepare the lecture that was attended by more than 80 people.

Sondra Shaginoff-Stuart, KPC native and rural student services coordinator, and Chris Stuive, KRC assistant professor of counseling, attended the Kenaitze First Fish of the Year celebration. The annual event was well attended by tribal leadership and guests from across Cook Inlet. Shaginoff-Stuart and Stuive were able to connect with community members and discuss programs for students in an informal setting.

Kenai Peninsula Borough Funding



The Kenai Peninsula Borough provided KPC with \$697,159 in 2015 for a variety of programs and positions.

In 1990, Peninsula voters approved up to 1/10th mill of property taxes paid to the borough could be directed to the college. KPC has received more than \$9.5 million from the borough in the last 23 years.

Giving/Donations

Periodic reminders are sent to staff, faculty and the College Council, reminding them that supporting student scholarships and campus funds helps ensure that KPC remains a college of first choice. Thanks to the generous employees and the College Council, KPC's 2015 Momentum Campaign was very successful, with 45 employees and College Council members participating, to raise \$9,500. The UA Foundation provided a community campus development grant that provided matching funds for all new donations and any amount that exceeded the previous year's donation. Almost \$2,500 was eligible for the foundation grant bringing the total amount raised to approximately \$12,000.

KPC's internal fundraiser, the Momentum Campaign, accepts donations throughout the academic year but kicks off in earnest during the spring semester.

Fundraising for the KBC Mary Epperson Student Support and Scholarship Endowment began in December with a bulk and direct mailing campaign that was funded by a UA Foundation community campus development grant. Four mass mailings were sent to businesses, the general public and friends of KBC. Two events were organized and held at area restaurants that provided discounts on space rental and food. Since the campaign began, \$12,000 was raised from the effort toward the \$25,000 endowment goal, bringing the total of the fund to approximately \$15,000.

KRC's EMT program was awarded \$18,870 by the Denali Commission for the purchase of a pediatric, high fidelity simulator (Sim Man Jr.). These simulators are used for certification in emergency pediatric care (PALS, PEARS and PEPP). This equipment will also be used by the UAA/KPC nursing program and other allied health programs.

Notable Grants and Donations

UA SW AND UAA FOR PROGRAM SUPPORT

UA SW Workforce Funding (TVEP) – PMED Ambulance Simulator	\$42,000
UA SW Workforce Funding (TVEP) –PRT Simview AV Equipment	\$24,000
UA SW Workforce Funding (TVEP) – Workforce Dev. Coordinator	\$42,600
UAA Nursing Program Support, KRC	\$12,000
UAA Nursing Program Support, KBC	\$12,000
UAA Academic Affairs - Assessment Funding	\$6,500
UAA Diversified Action Council – Program Support	\$1,375
UAA Academic Innovations and eLearning	\$500

NEW/EXTENDED GRANT AWARDS

NPS Lake Clark	\$60,992
Paramedic Program – Denali Commission	\$18,870

CONTINUING GRANT AWARDS

Kenai Peninsula Borough	\$697,159
Kenai Peninsula Project GRAD – Kachemak Bay Campus	\$8,750
Kenai Peninsula Project GRAD – Kenai River Campus	\$9,000
Alaska Dept of Labor Adult Basic Education	\$183,854
Alaska Dept of Labor WIA – Youth Job Training Program	\$80,000
EPSCoR IV: South Central Test Case	\$42,887

KPC DONATIONS - UA FOUNDATION

BP Process Technology Fund- Gas Lift Trainer	\$30,000
UA Foundation Community Campus Development	\$11,000
Kachemak Bay Campus Conference Support	
Individual Donations	\$19,500
Corporate: First National Bank	\$6,000
Homer Bookstore	\$800
Foundations: Usibelli Foundation	\$750
Alaska Professional Communicators	\$150
ASCA	\$4,750
Alaska's Promise – ConocoPhillips/BP	\$5,000
Kenai Campus Support Fund	\$4,275
AES Support Fund	\$200
KPC General Scholarship	\$29
KPC Faculty Scholarship	\$1,385
KRC Staff Scholarship	\$2,895
Kachemak Bay Campus Scholarship	\$750
KPC College Council Scholarship	\$900
Alaska Christian College Scholarship	\$700
Riemann Memorial Scholarship	\$490
Joseph Kashi and Terese Kashi Science and Technology Scholarship	\$1,510
Gary L. Freeburg Gallery	\$500
KPC Literacy Program (Read to Your Baby)-Kenai River Rotary	\$1,500
Mary Epperson Endowment Fund	\$14,850
Tim Jolley Memorial Scholarship	\$2,370
Brockel Family Scholarship Fund	\$100
Leo Rhode Charitable Trust	\$9,294

Kenai River Campus

156 College Rd.
Soldotna, Alaska 99669
1 (877) 262-0330
iyinfo@kpc.alaska.edu

Kachemak Bay Campus

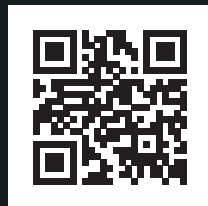
533 East Pioneer Ave.
Homer, Alaska 99603
1 (907) 235-7743
kbcinfo@kpc.alaska.edu

Anchorage Extension Site

3901 Old Seward Highway
Anchorage, Alaska 99503
1 (907) 786-6421

Resurrection Bay Extension Site

P.O. Box 1049
Seward, Alaska 99664
1 (907) 224-2285



www.kpc.alaska.edu
