



# **KPB ASSEMBLY**

## **2024 Quarterly**

# **PRESENTATION**

**Kenai Peninsula Economic  
Development District**

June 4, 2024

# 2021-2026 COMPREHENSIVE ECONOMIC DEVELOPMENT STRATEGY



## TECHNOLOGY AND CONNECTIVITY

- Focus and prioritize the expansion and pursuance of broadband infrastructure funding and projects Borough wide
- Reliable, affordable internet access



## WORKFORCE & HUMAN CAPITAL

- Industry partnerships and VOC-tech Programs
- Attract, retain, and train a qualified workforce; development of marketing tools



## INFRASTRUCTURE & LAND USE

- Industry-focused infrastructure
- Stability and resiliency in transportation infrastructure
- Mitigation/responsible use of lands



## BUSINESS CLIMATE AND ENTREPRENEURSHIP

- Communication, relationship cultivation and management amongst business sector participants, community leadership and chambers



## REGIONAL PARTNERSHIPS

- Coordinate with municipalities, communities, and non-profits, and industry leaders and investors

**FY24 KPEDD**  
**PROJECTS AND DELIVERABLES**

**REGIONAL COORDINATION,  
BUSINESS RESOURCE  
SUPPORT AND FACILITATOR  
ROLE**

Workforce Development initiatives, skill building, certification pursuance and programing; knowledge sharing Coordinate and facilitate Network of complimentary industries and participants

**KPEDD 's Lunch and Learn Series**

- Meet Your Neighborhood Lender**
- Connect with a Local Accountant: Small Business Strategies for 2025 Tax year**
- Business Resources on the Peninsula: AKMEP, SBDC, USDA and KPEDD**
- FALL: Granting and Revolving Loan Fund Programs**

**DATA LIBRARY  
PROGRAM, GIS DATA  
PLATFORM, DEVELOPMENT  
& WEBSITE REDESIGN**

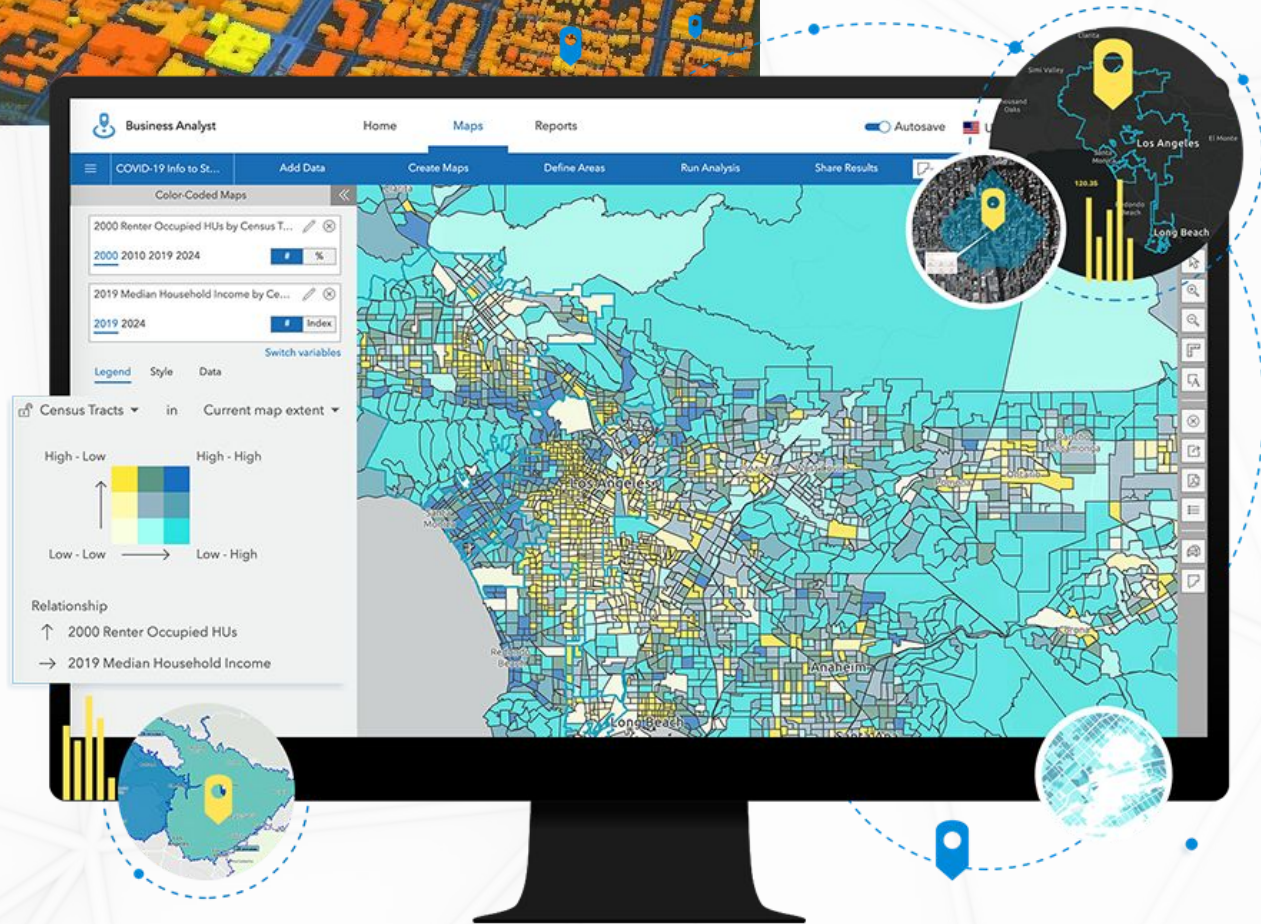
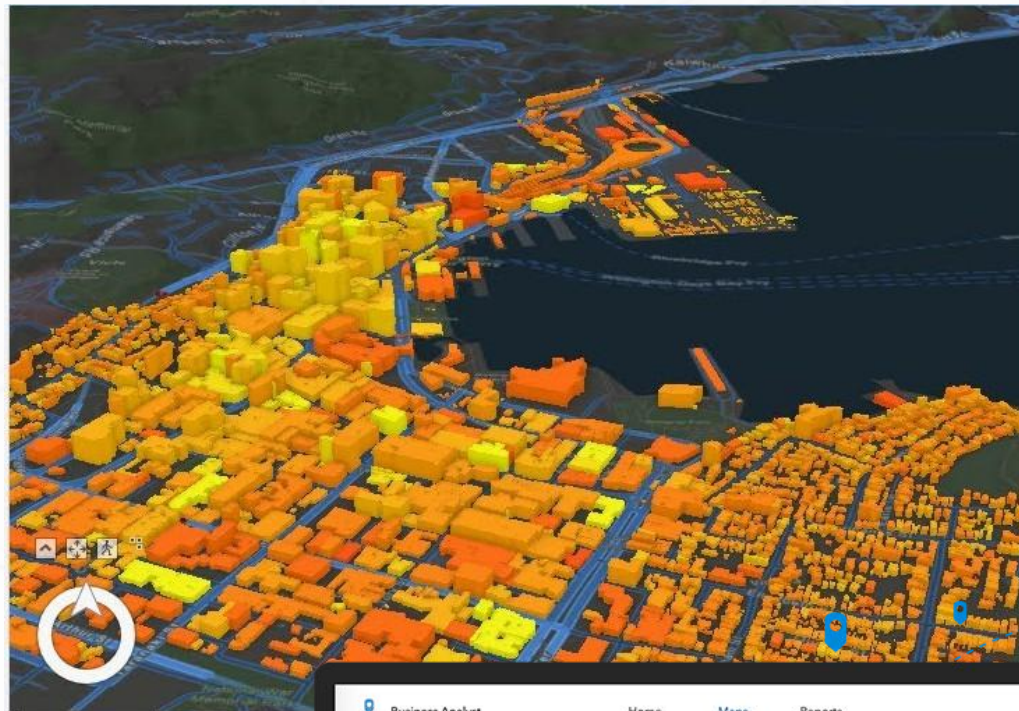
DataFY Software acquisition creates a direct pathway community specific visitor profile data. Access to relevant regional data will enable users identify aspects of their business activities and develop concentrated, deliberate effective marketing efforts.

ARC GIS Data will include up-to-date information on transportation service routes, service coverage, infrastructure development, workforce location data, housing, land use and tourism-related travel origins and destinations.

**KPEDD WILL CONTINUE  
TO ENGAGE,  
CONTRIBUTE AND  
COLLABORATE**

**Continued Active Participation in**

- Alaska Mariculture Cluster
- Alaska Arctic Energy Ambassador Program
- Alaska Business Education Compact
- KPBSD Career and Technical Advisory Committee
- Hosting KPEDD Industry Overview Forum 2025 (Seward)
- Kenai Peninsula Comprehensive Economic Strategy 2025 Planning Process
- Transportation, Housing, Childcare Infrastructure



KPEDD New and Refreshed  
Website Elements

[www.kpedd.org](http://www.kpedd.org)

[kenaipeninsulaworkforce.org](http://kenaipeninsulaworkforce.org)



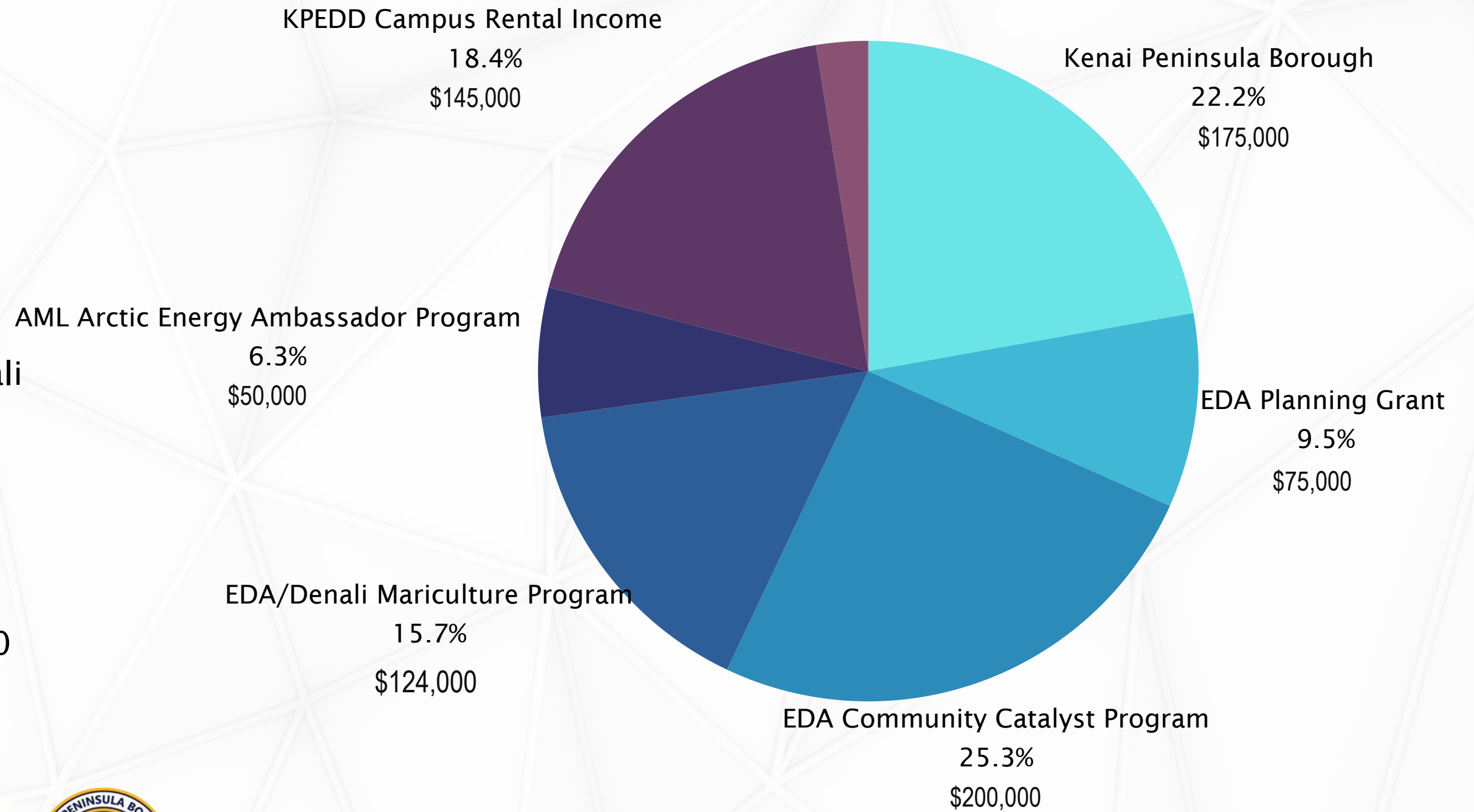
# KPEDD FY25 Budget Highlights and Utilization

FY25 Kenai Peninsula Assembly Budget  
Requested Amount  
**\$175,000**

Borough Funds will be utilized to leverage \$225,000 in FY25 in Federal Funds through EDA Community Catalyst Program and the EDA CEDS Planning Program.

KPEDD's FY25 Anticipated Operating Budget includes

- Business Rental Revenues from KPEDD Campus: \$145,000
- Alaska Mariculture Cluster via EDA and Denali Commission (through 2026): \$124,000 annually
- Department of Energy Arctic Energy Ambassador Program via AML: \$50,000 annually
- EDA Community Catalyst Program: \$200,000
- EDA CEDS Planning Grant: \$75,000
- Kenai Peninsula Borough: \$175,000



***THANK YOU***



***Cassidi Cameron, Executive  
Director Kenai Peninsula Economic  
Development***

***District  
Cassidi@kpedd.or***

***g (907)283-3335***

***Ext 2***