

Eastern Peninsula Highway Emergency Service Area

FY2025 Proposed Budget



Background Information

- Coordinate Fire & Emergency Medical Services within the highway corridor.

Mileposts 8.5 – 75 Seward Highway

Mileposts 37 - 58 Sterling Highway

Mileposts 0 - 13 Hope Highway

- Funding by PILT

- Contracted Staff of .5

	BCFSA	EPHESA
Chief	.75 FTE	.25 FTE
Fire Technician	.75 FTE	.25FTE

- Primary Agencies who provide the service in EPHESA

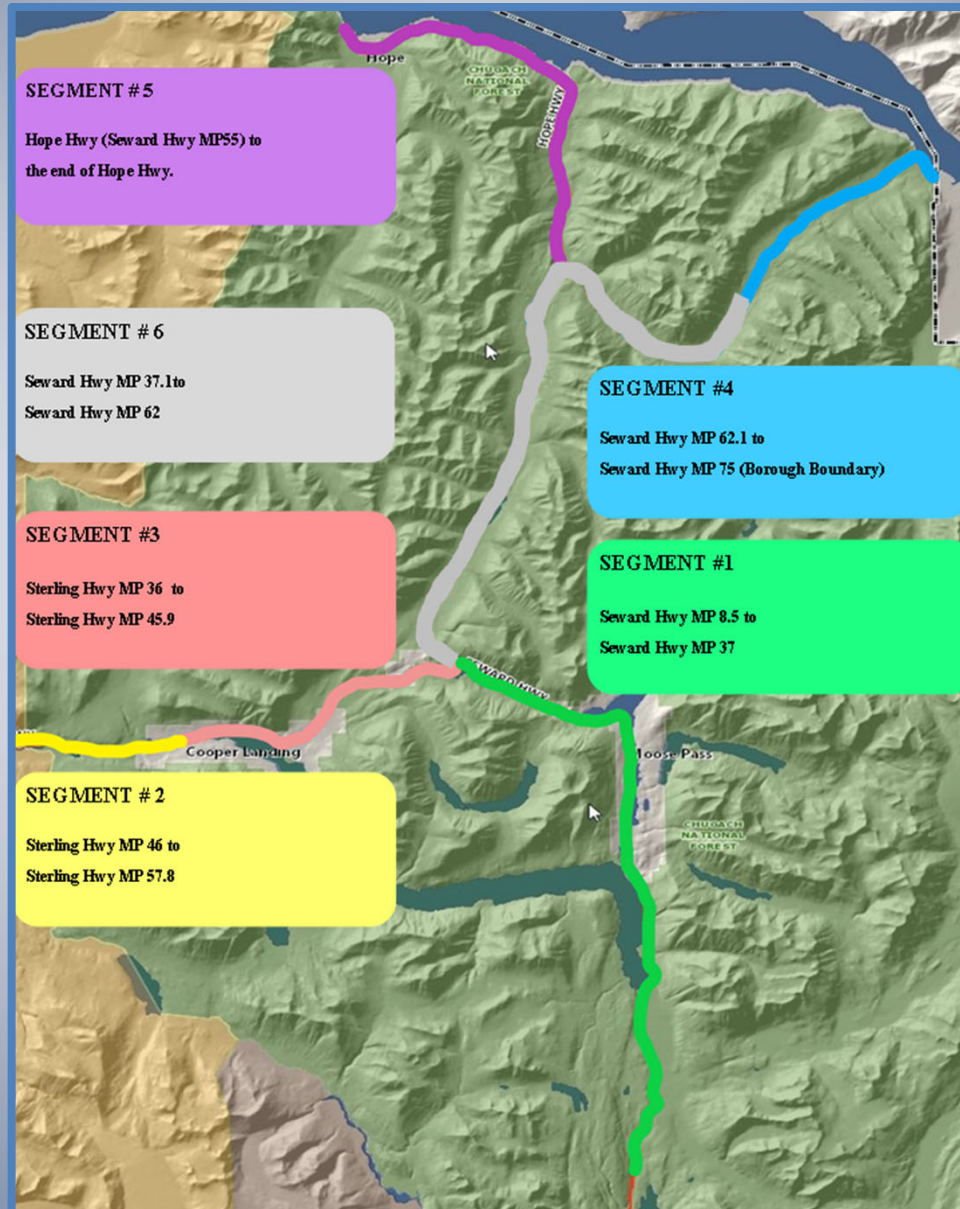
Cooper Landing Emergency Services

Hope Sunrise Emergency Services

Moose Pass Fire Company

Seward Volunteer Ambulance Service

EPHESA Segment Map



Level 1 Stipend: Single Response

Eastern Peninsula Highway Emergency Service Area <i>Mission: To Provide Rapid Emergency Response that provides Initial EMS, Ground Transport, and Fire/Rescue Extrication services to the EASTERN PENINSULA HIGHWAY EMERGENCY SERVICE AREA.</i>	
1st RESPONDER RESPONSE REQUIREMENTS and PERFORMANCE STIPEND	
a. TASK & PURPOSE: Provide rapid emergency response that provides Initial BLS Care and Scene Management.	b. APARATUS: * Capable of Carrying Personnel to the Scene with BLS Equipment.
c. PERSONNEL: & TRAINING: * 2 Total - Certified ETT Responders, Preferably EMT I Responders. * Annual Emergency Vehicle Operations Training. * ICS 100, 200, 700, 800.	d. EQUIPMENT: * Trauma Bag * Patient Stabilization * Oxygen Delivery * Communications - two way communications radio with department and ALMR frequencies.
STIPEND PER CALL: \$300	CANCEL ENROUTE: \$100
GROUND TRANSPORT RESPONSE REQUIREMENTS and PERFORMANCE STIPEND	
a. TASK & PURPOSE: Provide Ground Transport Service that assumes patient care and transport to an appropriate patient care facility or higher level of care.	b. APARATUS: * One (1) Certified State of Alaska Ground Transport Ambulance.
c. PERSONNEL: & TRAINING: * 2 Total - 1 Certified EMT I/Basic Responder and 1 Driver, Preferably ETT. * Meet Level I Extrication Guidelines. * Annual Emergency Vehicle Operations Training. * ICS 100, 200, 700, 800.	d. EQUIPMENT: * All equipment & supplies to meet State of AK BLS Ground Transport Ambulance. * Communications - two way communications radio with department and ALMR frequencies.
STIPEND PER CALL: \$600	CANCEL ENROUTE: \$100
FIRE/RESCUE EXTRICATION RESPONSE REQUIREMENTS and PERFORMANCE STIPEND	
a. TASK & PURPOSE: To provide fire protection and/or suppression support and vehicle extrication within the EPHESA.	b. APARATUS: * Structure Engine Type 1 or 2 * Wildland Engine Type 6
c. PERSONNEL & TRAINING: * 2 Total - 1 Certified EMT I/Basic Responder and/or Certified Firefighter I State of Alaska Responder and 1 Driver, Preferably ETT. * Must meet Level I & Level II Extrication Guidelines. * Annual Emergency Vehicle Operations Training. * Four (4) hours per quarter Fire/Extrication training * Every two (2) years, Extrication training using actual equipment used by Agency. * ICS 100, 200, 700, 800.	d. EQUIPMENT: * Stabilization kit, blocking & cribbing. * Scene lighting . * Fire Suppression system (charged lines) * Extrication equipment. * Standard PPE. * Traffic control. * Communications - two way communications radio with department and ALMR frequencies.
STIPEND PER CALL: \$800.00	CANCEL ENROUTE: \$100

Level 2 Stipend: Full Response

Eastern Peninsula Highway Emergency Service Area <i>Mission: To Provide Rapid Emergency Response that provides Initial EMS, Ground Transport, and Fire/Rescue Extrication services to the EASTERN PENINSULA HIGHWAY EMERGENCY SERVICE AREA.</i>	
INITIAL CALL FOR SERVICE	COMMAND OFFICER
Initial call for service fee shall be charged for call out of the Fire Department. After the first hour hourly rates for each piece of fire apparatus shall be charged in accordance with the following:	Command Officer will coordinate crew efforts, ensure the safety of the firefighters and EMS personnel, assess the incident priorities and determine the strategy and tactics that will be used.
INITIAL CALL OUT FEE: \$600	COMMAND VEHICLE FEE PER HOUR: \$200
GROUND TRANSPORT (Ambulance) RESPONSE REQUIREMENTS	
a. TASK & PURPOSE: Provide Ground Transport Service that assumes patient care and transport to an appropriate patient care facility or higher level of care.	b. APARATUS: * One (1) Certified State of Alaska Ground Transport Ambulance.
c. PERSONNEL & TRAINING: * 2 Total - 1 Certified EMT I/Basic Responder and 1 Driver, Preferably ETT. * Meet Level I Extrication Guidelines. * Annual Emergency Vehicle Operations Training. * ICS 100, 200, 700, 800.	d. EQUIPMENT: * All equipment & supplies to meet State of AK BLS Ground Transport Ambulance. * Communications - two way communications radio with department and ALMR frequencies.
AMBULANCE NON TRANSPORT FEE PER HOUR: \$300	Ambulance Transport fee will be reimbursed by patient
FIRE/RESCUE EXTRICATION RESPONSE REQUIREMENTS	
a. TASK & PURPOSE: To provide fire protection and/or suppression support and vehicle extrication within the EPHESA.	b. APARATUS: * Engine * Heavy Rescue * Ladder Truck * Tender * Brush Truck
c. PERSONNEL & TRAINING: * 2 Total - 1 Certified EMT I/Basic Responder and/or Certified Firefighter I State of Alaska Responder and 1 Driver, Preferably ETT * Must meet Level I & Level II Extrication Guidelines * Annual Emergency Vehicle Operations Training * Four (4) hours per quarter Fire/Extrication training * Every two (2) years, Extrication training using actual equipment used by Agency * ICS 100, 200, 700, 800.	d. EQUIPMENT: * Stabilization kit, blocking & cribbing. * Scene lighting . * Fire Suppression system (charged lines) * Extrication equipment. * Standard PPE. * Traffic control. * Communications - two way communications radio with department and ALMR frequencies.
APPARATUS FEE PER HOUR: \$300	

Level 3 Response Time Stipend

Eastern Peninsula Highway Emergency Service Area

Mission: To Provide Rapid Emergency Response that provides Initial EMS, Ground Transport, and Fire/Rescue Extrication services to the EASTERN PENINSULA HIGHWAY EMERGENCY SERVICE AREA.

BENCHMARK

15 minutes from Dispatch to Enroute with Apparatus in addition to providing the requirements of Level 1 Response

Maximum Potential Stipend

\$5,000

Results from two years of Performance Measure

- **Objective**

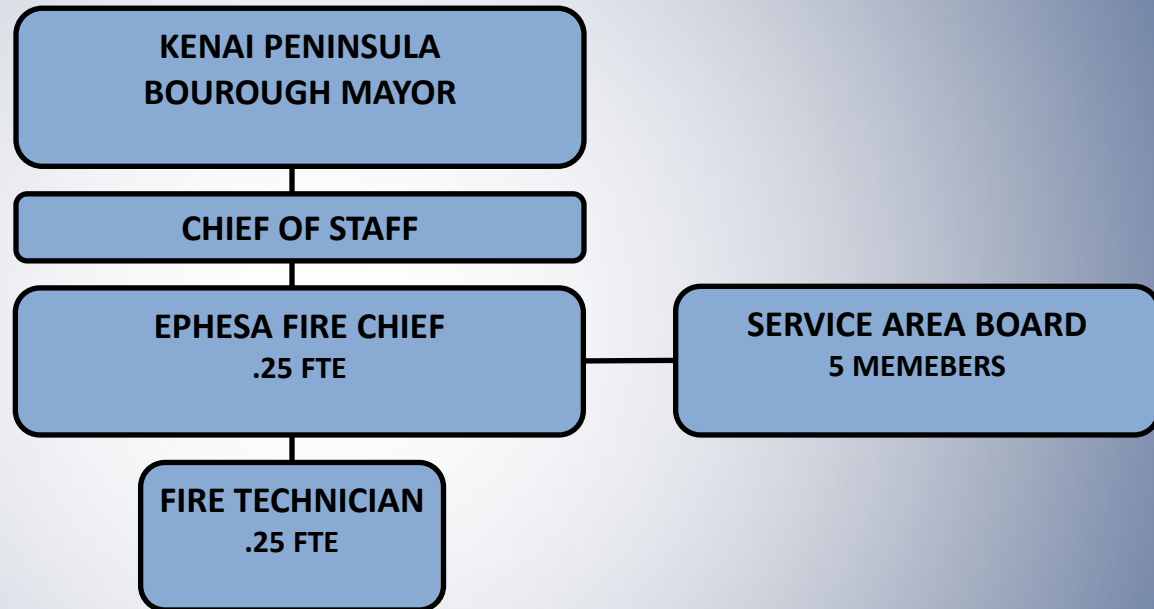
Calculate average time from Dispatch to Enroute with Apparatus.

Will assist with Awarding of Segment Response Priorities.

Additional Performance Stipend.

Enroute Times	Cooper Landing		Moose Pass		Hope		SVAC	
	FY23	FY24	FY23	FY24	FY23	FY24	FY23	FY24
Dispatch to Enroute Average	3 min 33 sec	5 min 21 sec	18 min 32 sec	13 min 29 sec	10 min 0 sec	No Calls	4 min 18 sec	12 min 0 sec

Organization Chart



FY2024 Key Accomplishments

- Received Extrication Equipment.
- 100% Success for Time Stipend

FY2025 Objectives and Budget Highlights

- Address the reduction of the wattage at ALMR Sites.
 - Continue to incentivize reduced response times.
- Provide funding for ETT/EMT I Bridge, Extrication, & Fire Courses to Primary Participating Agencies.
 - Purchase Vehicle Fire Trainer and Haul Trailer.
 - Provide funding match for Legislative Request.

Expenditure Summary

	FY2024 Original Budget	FY2025 Proposed Budget	Change
Personnel (Reflected in Contract Services)	\$0	\$0	\$0
Supplies	1,893	1,893	0
Services	329,955	326,938	-3,017
Capital Outlay	0	20,000	20,000
Transfers	8,834	9,143	309
Interdepartmental Charges	8,517	8,949	432
Totals	\$349,199	\$366,923	\$17,724
			5.08%

Significant Budgetary Items

Vehicle Fire Trainer w/ Trailer

Long Term Issues and Concerns

- Poor Communications along the Service Area.
- Providing consistent, coordinated responses.
- Restricted maintenance along the Seward and Hope Highway.