



# South Peninsula Hospital Report

Prepared for

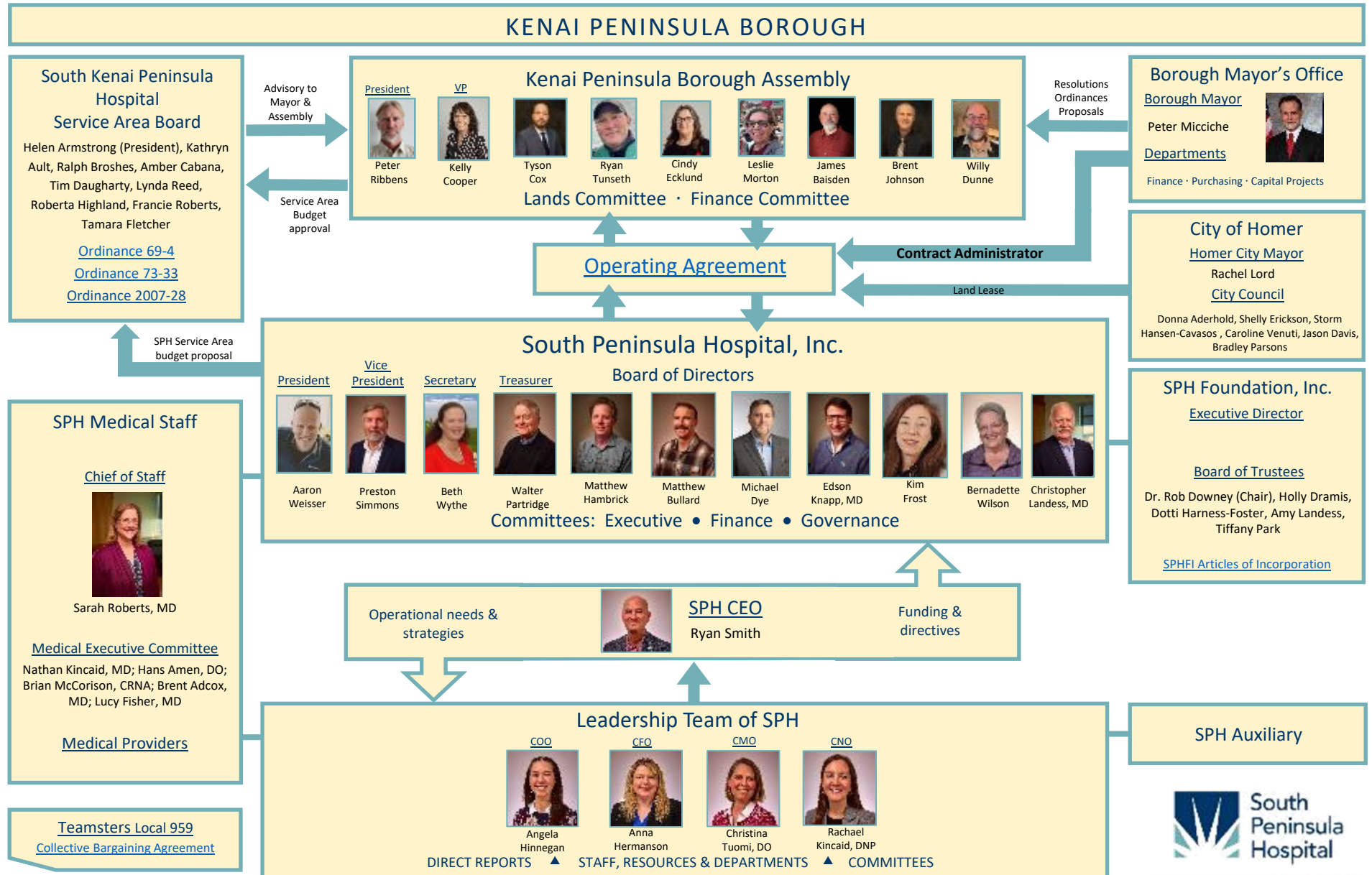
Kenai Peninsula Borough Assembly

May 6, 2025

*South Peninsula Hospital is the healthcare provider of choice,  
with a dynamic and dedicated team committed to service excellence.*



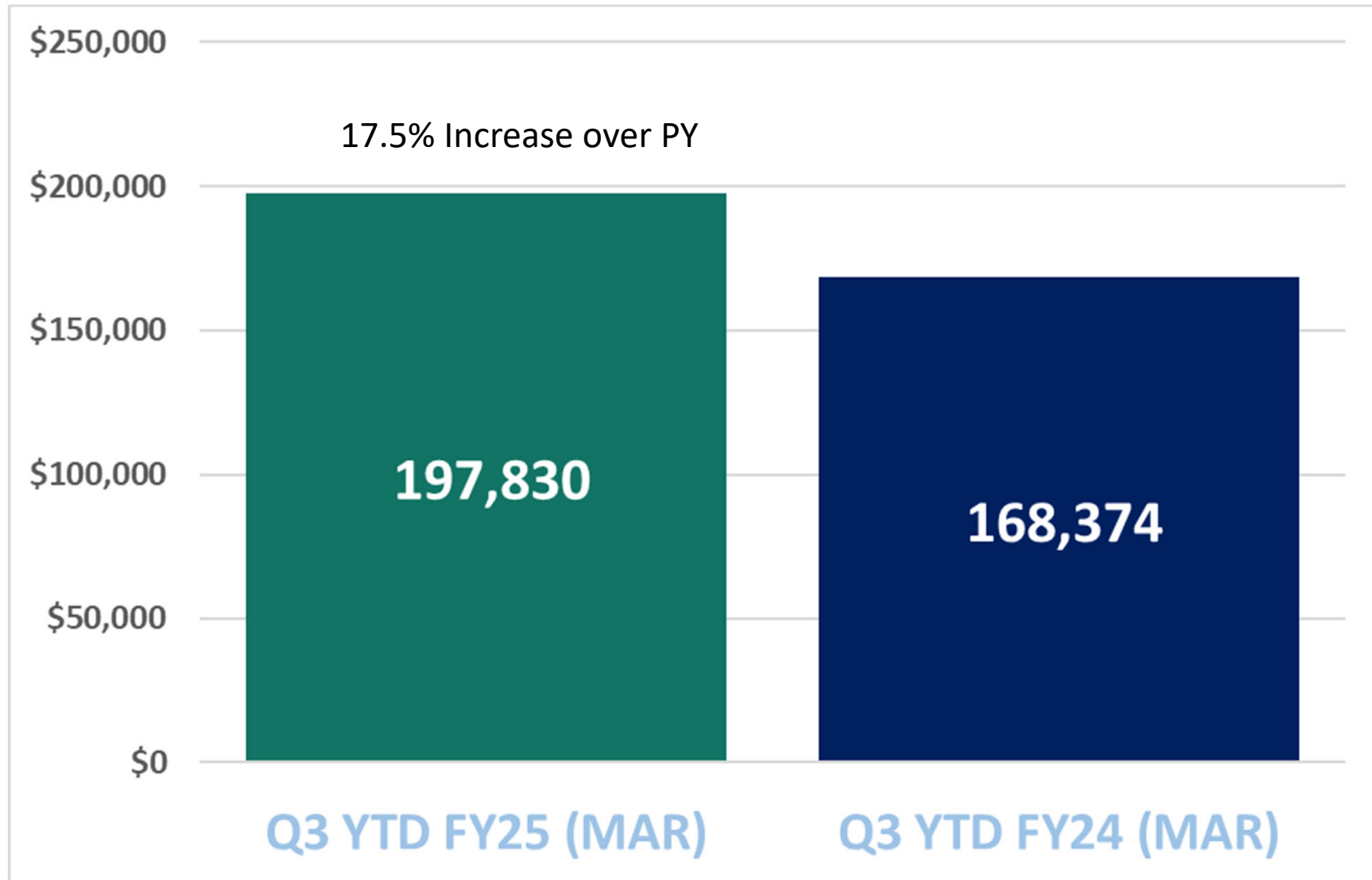
# SOUTH PENINSULA HOSPITAL OWNERSHIP AND GOVERNANCE



Questions or concerns with care? Call South Peninsula Hospital (907) 235-0389 or Alaska State Health Facilities Licensing & Certification (907) 334-2483

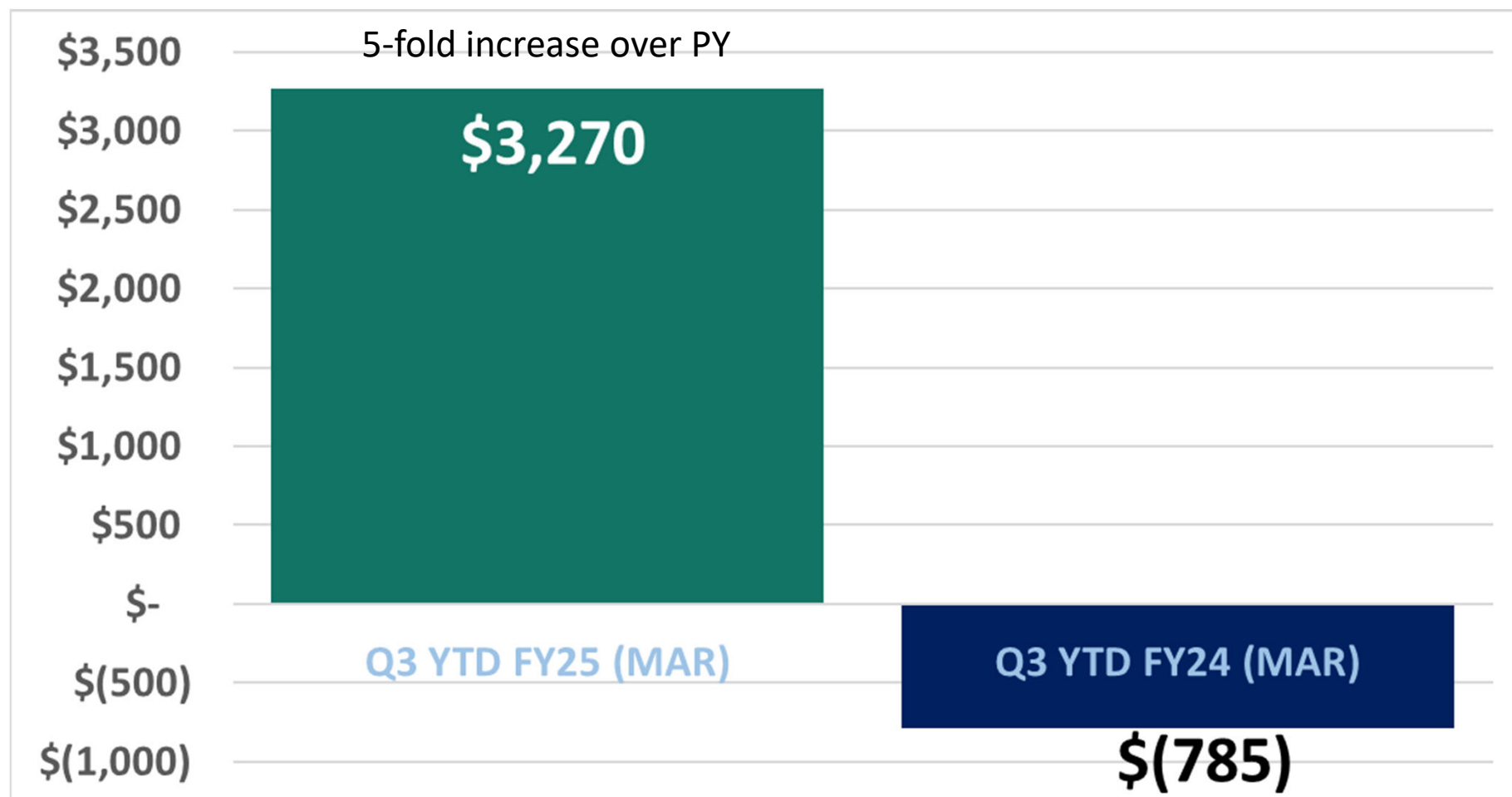
# Gross Patient Revenue-Q3 YTD FY25

(in thousands)



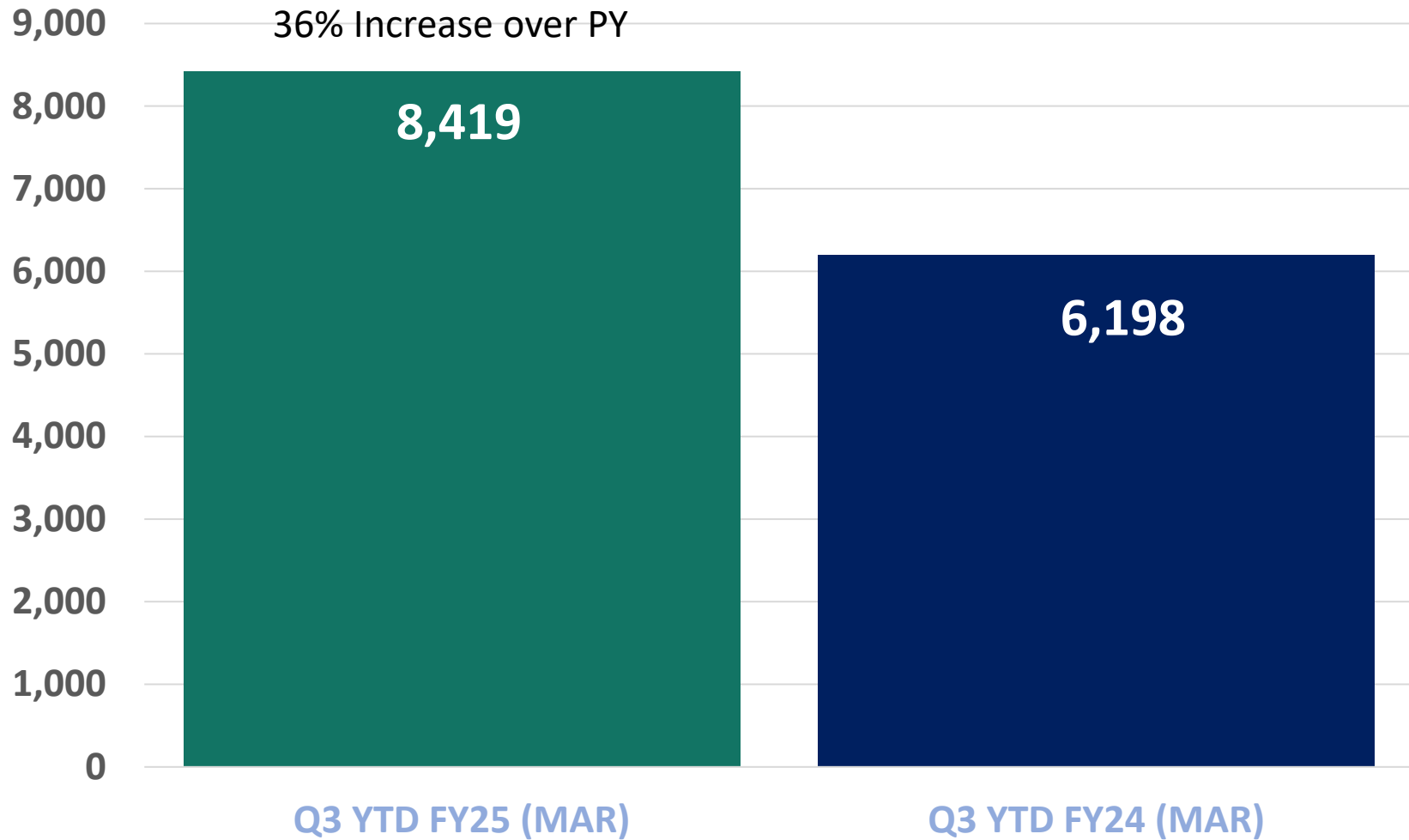
# Operating Income-Q3 YTD FY25

(in thousands)



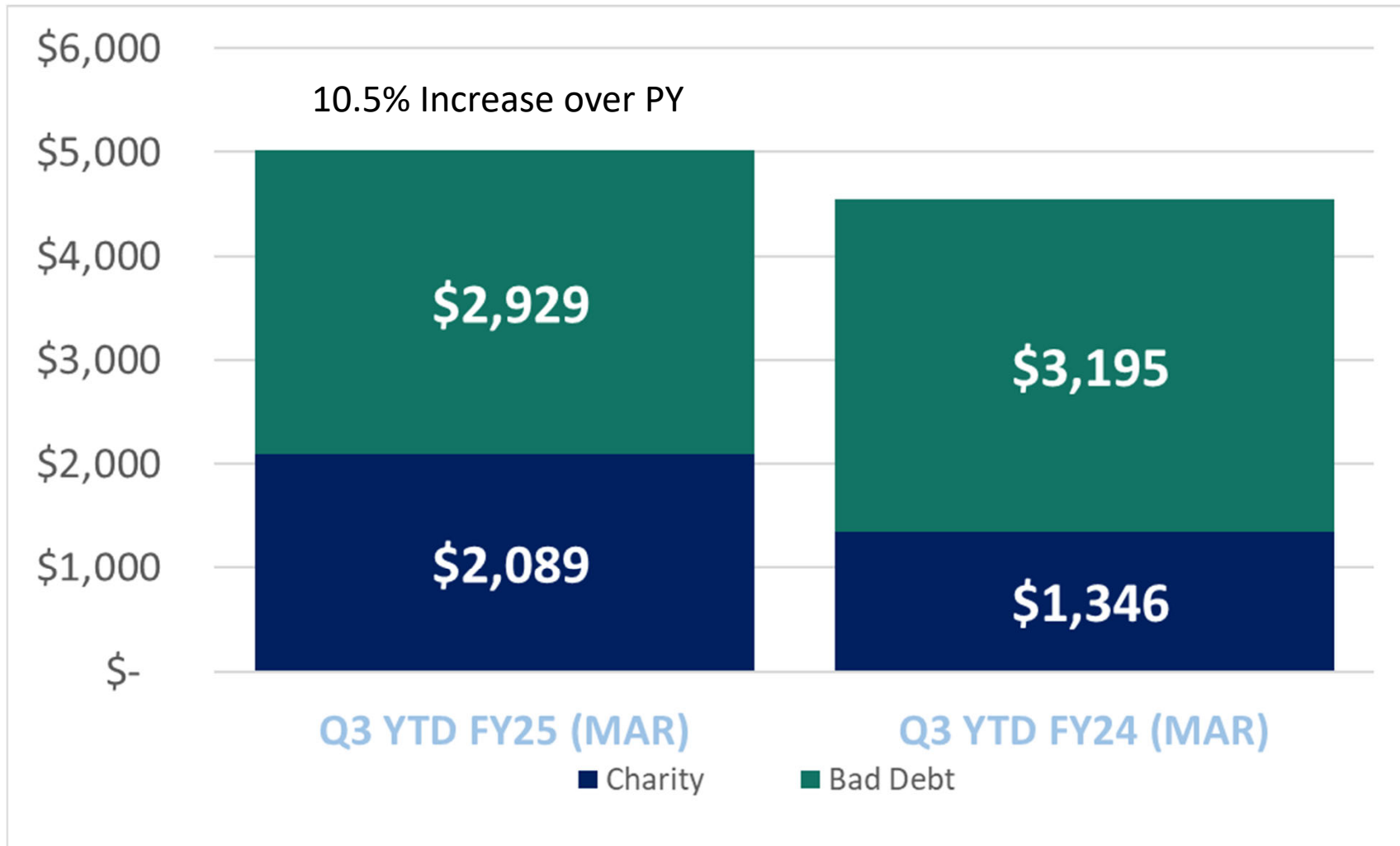
# Net Income-Q3 YTD FY25

(in thousands)

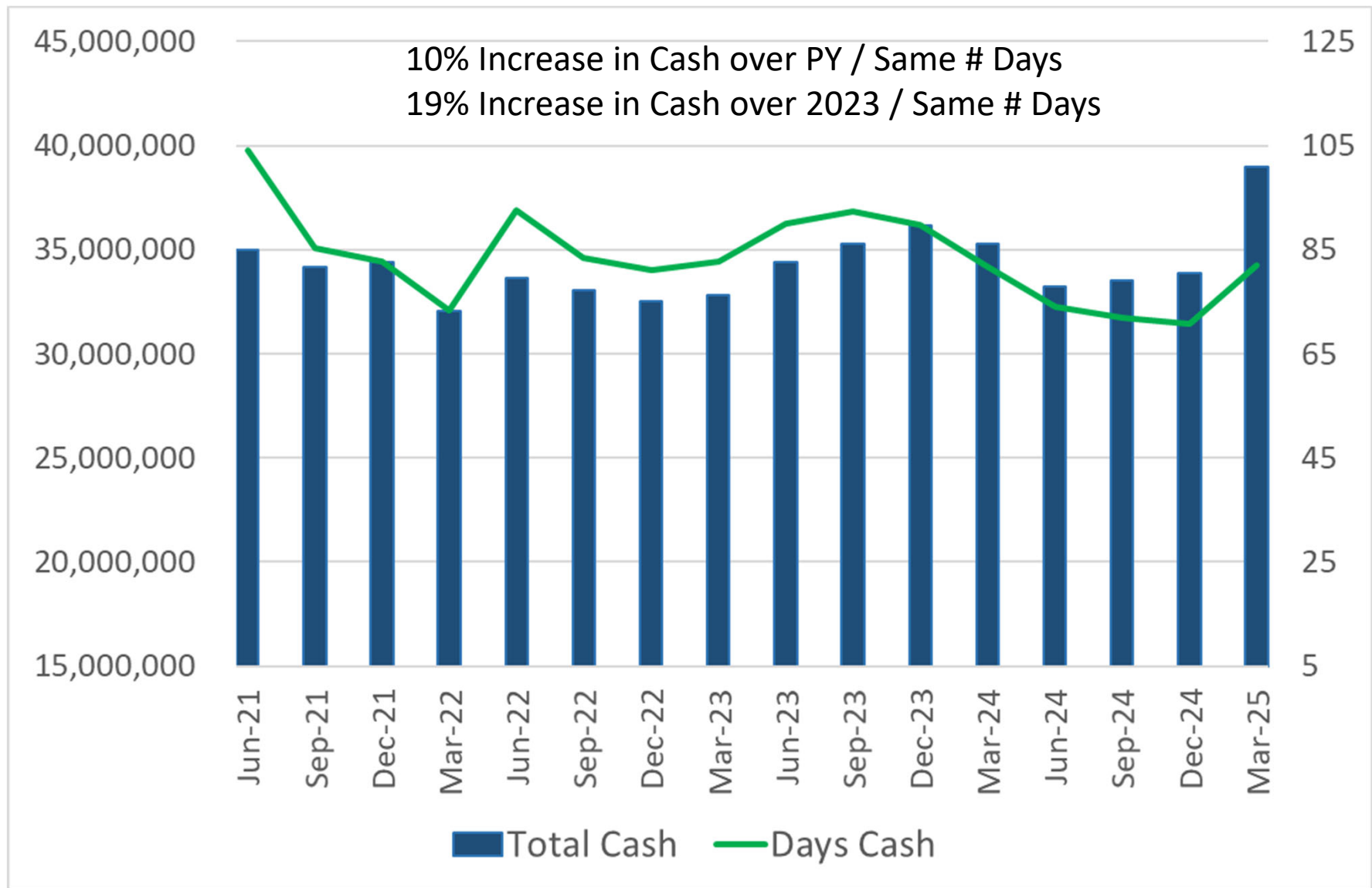


# Charity Care & Bad Debt-Q3 YTD FY25

(in thousands)



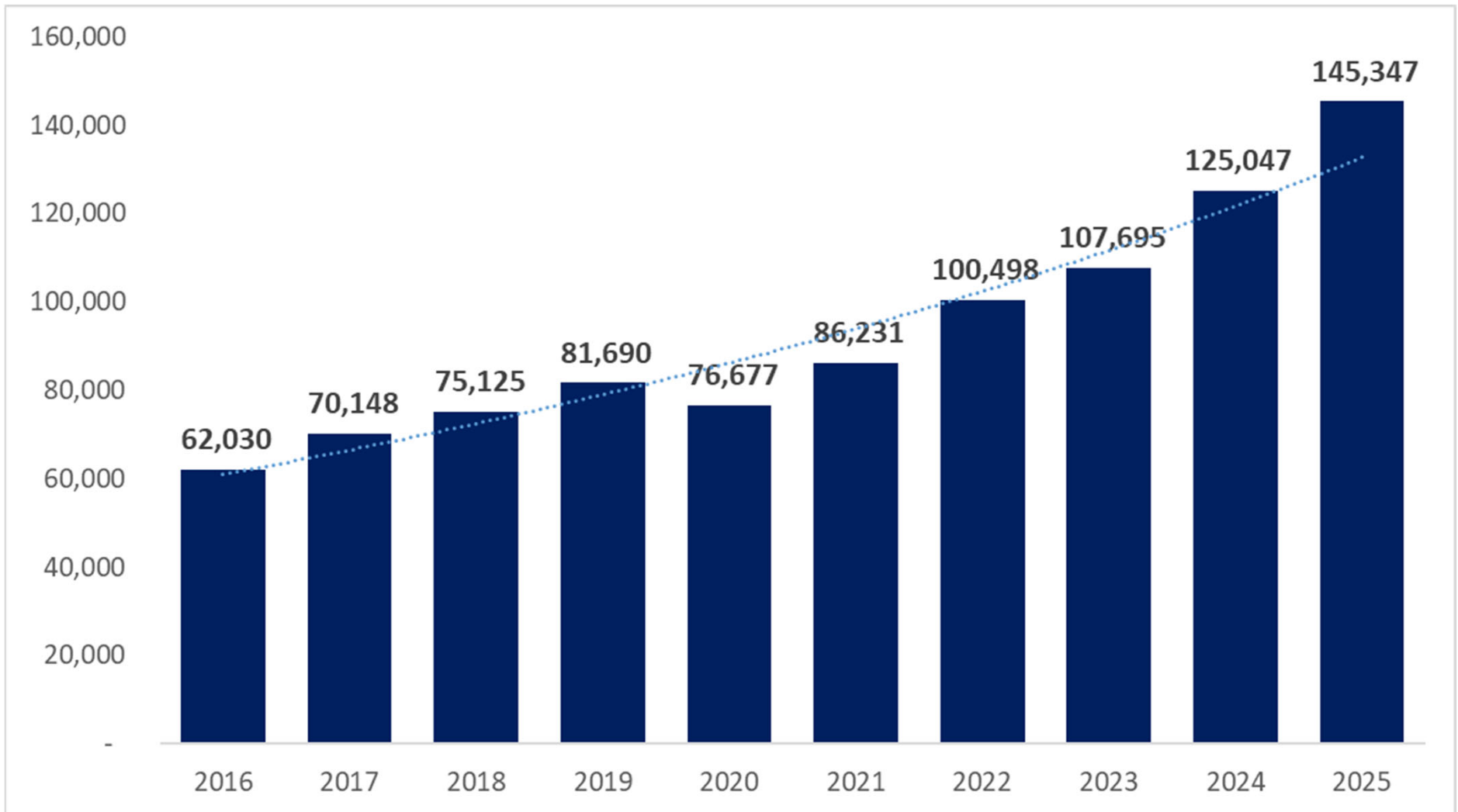
# Days Cash on Hand



# Total Operating Revenue

(in thousands)

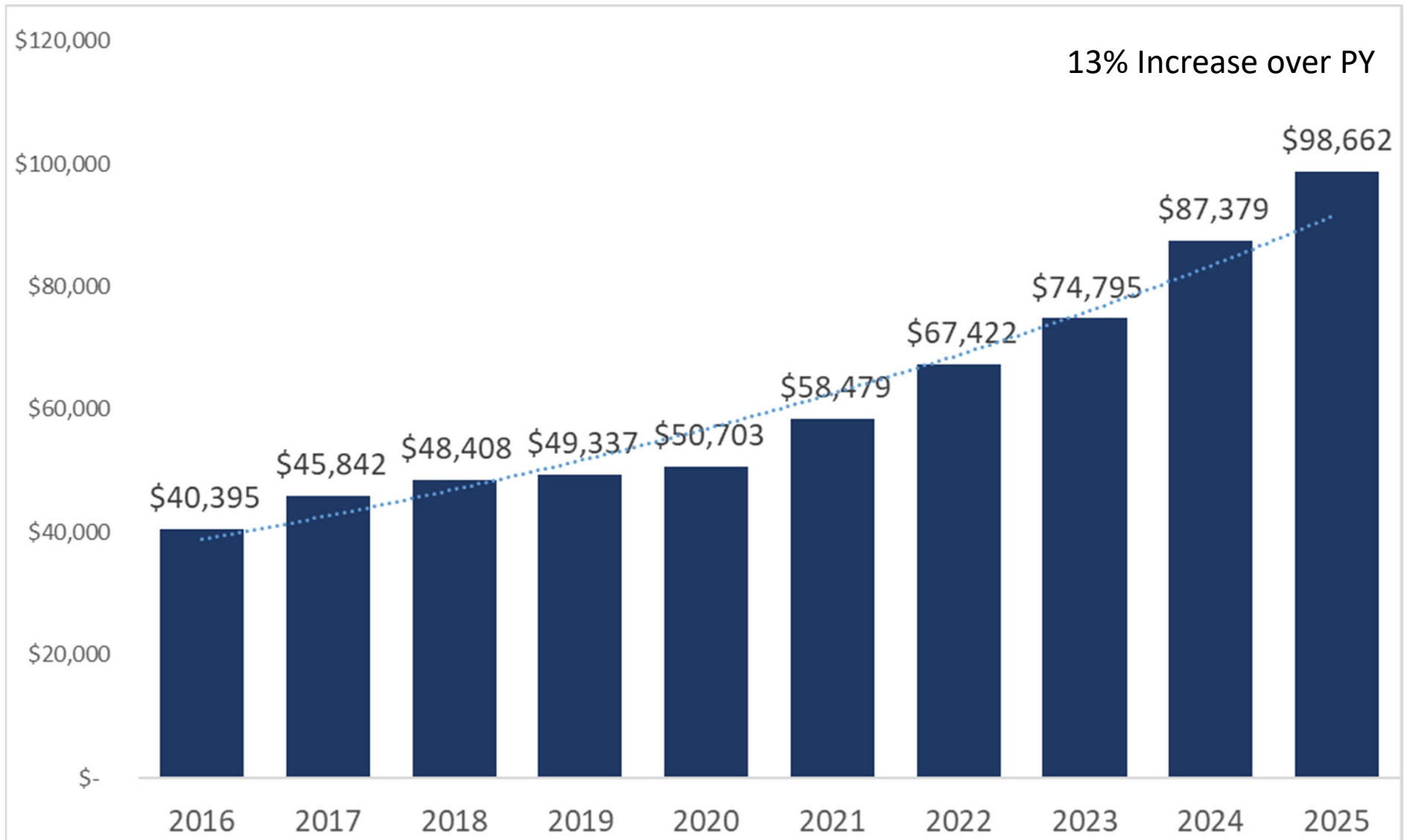
16% Increase over PY





# Salaries Wages & Benefits

(in thousands)



# Housing Project Update

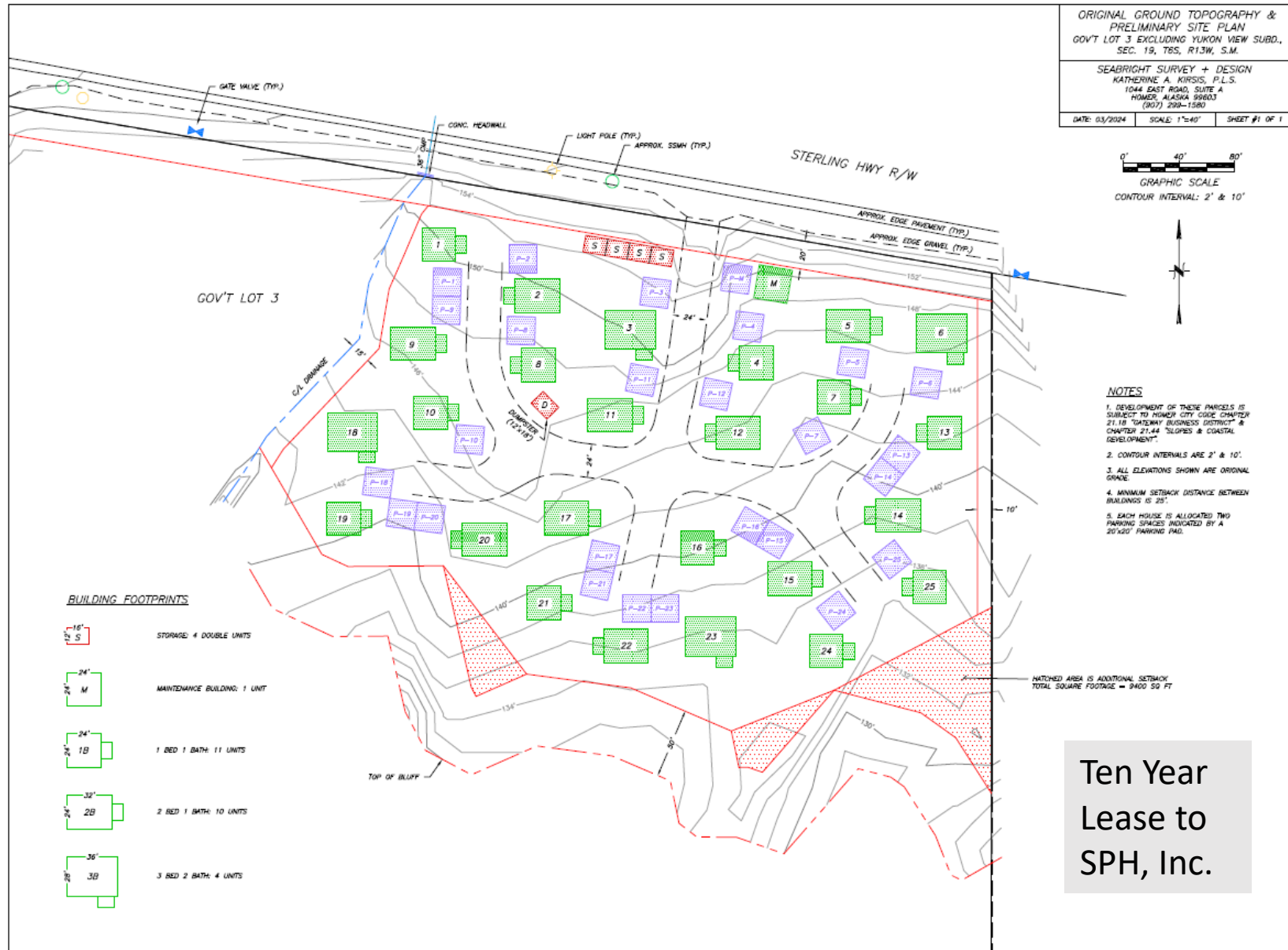
## Timeline for SPH Housing Project

- April 2024 - Begin Wetlands Delineation
- April 2024 - Begin Site Design/Layout/Engineering
- May 2024 - Begin CUP Permit from City of Homer
- May 2024 - SWPPP, DAP, BMP, Water and Sewer, SWP, Driveway Permits
- August/Sept 2024 - Begin Installing Utilities, Driveways, Parking
- April 2025 - Begin Construction on 25 Rental Units
- April 1<sup>st</sup> 2026 - Phase One Completed (13 Rental Units)
- July 1<sup>st</sup> 2026 – Phase Two Completed (12 Rental Units)
- Gantt Chart will be supplied to SPH before construction begins

**Update - Hope to Break Ground in May!**



# Housing Project – Site Concept



Ten Year  
Lease to  
SPH, Inc.

# Childcare Update

Anticipated construction completion – July 2025

## Complete

Interior framing

Electrical and plumbing

Family Handbooks and Manuals

Classroom furniture has arrived



## Funding

\$1.3 million grant from the American Rescue Plan Act / Coronavirus Response & Relief

Several smaller grants (Rasmuson/AHHA)

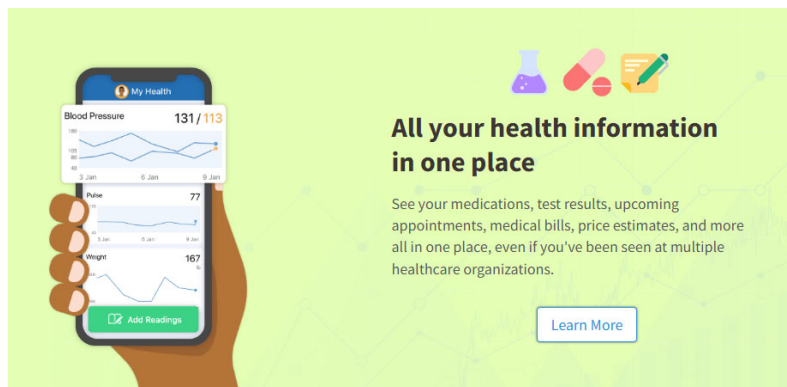
Hundreds in Foundation donations

Applied for \$800 thousand in additional funding from Thread



# EPIC Update

- Total Spend \$1.56M/\$7M Approved (\$5M by June)
- “Sage” Intact ERP implemented & live
- “Envi” Materials Management March Go Live
- Compatible Equipment Replacement Near Completion
- Multiple Active Workgroups/Online Training
- EPIC Go Live August 9-11





# Relocation of Services

- Rehabilitation Svcs – Lake Street
- Behavioral Health Svcs – Clinic flooded Oct 2024/ non-recoverable
- SPH Seaside Women's Health – OB/GYN & Midwifery combining June 2025
- Dermatology & Plastic Surgery – will reopen in a larger space on Fairview



# Welcome to SPH!



**Lauren Dorsey-Spitz, DO – Pediatrics (May/June 2025)**

Joining the team at Homer Medical Center

Medical School: University of Minnesota, Minneapolis



**Jenna Aird, M.D. – Dermatology (2025)**

Opening a new Dermatology Clinic out of the Renew Clinic

Hometown: Homer, Alaska

Medical School: Creighton Medical School,

Residency: Mayo Clinic College of Medicine and Science



**Gregory Aird, M.D. – Diagnostic Radiology (2025)**

Joining Dr. Knapp as a full-time employed Radiologist

Medical School: Creighton University School of Medicine,

Residency: Mayo Clinic College of Medicine and Science



**Ian Lawrence, M.D. – Internal Medicine-Pediatrics (2025)**

Joining the hospitalist team

Medical School: University of Colorado School of Medicine

Residency: University of Colorado School of Medicine, Internal Medicine-Pediatrics Residency

Training Program



# South Peninsula Hospital Cares

A graphic for the Financial Assistance Program at South Peninsula Hospital. It features a light blue background with a dark blue wave at the bottom. The title 'Financial Assistance Program' is in a mix of script and bold sans-serif fonts. The South Peninsula Hospital logo is in the top right. A central teal circle contains the text 'What Is Covered?'. To the left, a list of 'Included Services' is preceded by checkmarks.

*Financial*  
**Assistance Program**

South Peninsula Hospital

Financial Assistance offers a percentage discount off the remaining balance owed by eligible patients.

**Included Services**

- ✓ Homer Medical & Family Care Clinic
- ✓ Specialty Clinics & Rehabilitation
- ✓ Surgical Procedures & Emergency Care
- ✓ Radiology & Laboratory Services
- ✓ Functional Medicine & Sleep Lab
- ✓ Most medically necessary services

**What Is Covered?**

Financial Assistance covers medically necessary services and provides discounts as high as 100% off your balance.

**Sliding Scale for:**  
Households up to  
350% of the FPG

**Medical  
Indigence:** Total  
balance exceeds  
20% of household  
income

<https://www.sphosp.org/for-patients/financial-assistance/>

Call one of our Financial Counselors for more information: (907)235-0994





## Follow up to projects in failed bond proposition

- Buildings – Strategic properties being reviewed by KPB, Current Strategy continue leasing key properties
- Infusion Department Relocation / Pharmacy Upgrade & Relocation
  - Infusion Clinic/Pharm design to resume – regulatory; 65% designed; searching for funding
- Temporary Backup and New Relocated Generator/power plant
  - \$5 million Congressional discretionary allocation via DHSS/HRSA
  - Taking Contractor solicitations through July
  - Construction: late 2025 – early 2027



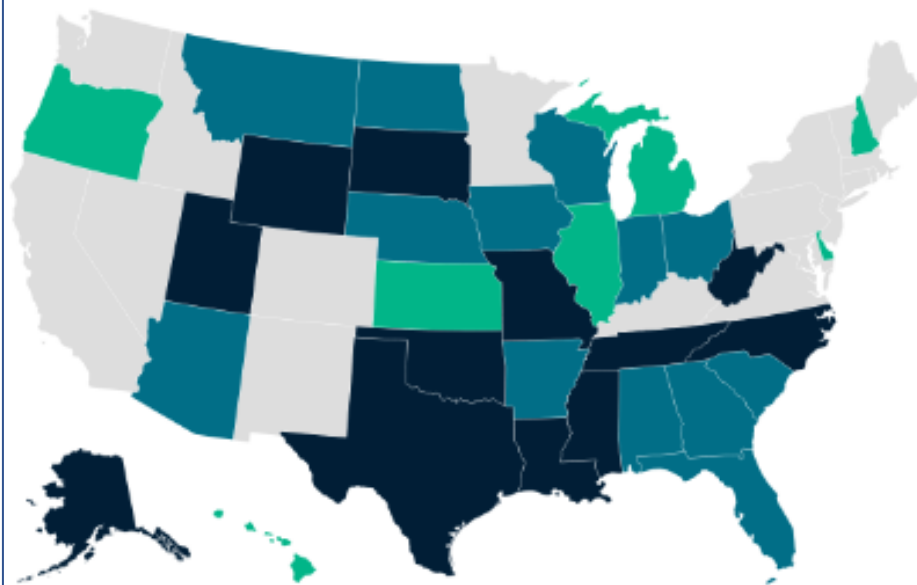
# Monitoring the Political Landscape – Healthcare Uncertainty

## Among States Using HealthCare.gov, on Average, Premium Payments Would At Least Double in 12 States If Enhanced Subsidies Expire

Percent Change in Premium Payments Without Inflation Reduction Act Subsidies Among HealthCare.gov Consumers Receiving APTC, 2024

Percent Change Dollar Change

Less than 80% 80% - 99% 100% or more



## How major cuts to Medicaid could be 'catastrophic,' even for Alaskans with private insurance

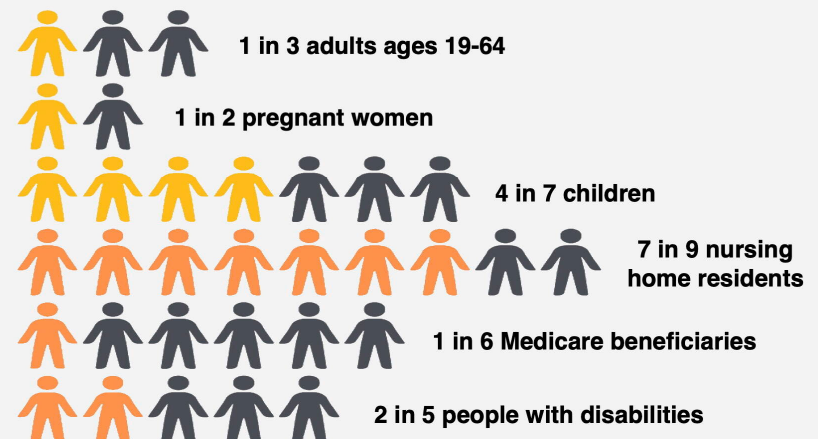
Alaska Public Media | By Rachel Cassandra, Liz Ruskin  
Published March 11, 2025 at 11:05 AM AKDT

▶ LISTEN • 5:51



Alaskans protest potential federal and state funding cuts March 4, 2025 in Anchorage.

## Medicaid coverage in Alaska







## What's Next?

- Community Public Relations Outreach
- Community Health Survey has started
  - Started in April – 300 Responses Received
- Board of Directors Strategic Planning Retreat held April 26<sup>th</sup>-27<sup>th</sup>



Thank you

QUESTIONS?



*South Peninsula Hospital is the healthcare provider of choice,  
with a dynamic and dedicated team committed to service excellence.*

