



South
Peninsula
Hospital

South Peninsula Hospital Report

Prepared for

Kenai Peninsula Borough Mayor and Assembly

May 5, 2026

*South Peninsula Hospital is the healthcare provider of choice,
with a dynamic and dedicated team committed to service excellence.*

SOUTH PENINSULA HOSPITAL OWNERSHIP AND GOVERNANCE

KENAI PENINSULA BOROUGH

South Kenai Peninsula Hospital Service Area Board

Helen Armstrong (President), Amber Cabana, Lynda Reed, Francie Roberts, Tamara Fletcher, Erin Workman, Catriona Reynolds, Brandy Zollars, Storm Hansen

[Ordinance 69-4](#)
[Ordinance 73-33](#)
[Ordinance 2007-28](#)

Advisory to Mayor & Assembly

Service Area Budget approval

SPH Service Area budget proposal

Kenai Peninsula Borough Assembly

President  Ryan Tunseth, Kenai	VP  Kelly Cooper, Homer	 Lenora Niesen, Nikiski	 Scott Griebel, Kalifornsky	 Cindy Ecklund, East Peninsula	 Sargeant Truesdell, Soldotna	 Dale Eicher, Sterling	 Michael W. Hicks, Central	 Willy Dunne, South Peninsula
--	---	---	---	--	---	--	--	---

Lands Committee • Finance Committee

Resolutions
Ordinances
Proposals

Borough Mayor's Office

Borough Mayor
Peter Micciche

Departments
Finance • Purchasing • Capital Projects

City of Homer Homer City Mayor

Rachel Lord
City Council
Donna Aderhold, Shelly Erickson, Storm Hansen, Caroline Venuti, Jason Davis, Bradley Parsons

SPH Foundation, Inc.

Board of Trustees
Dr. Rob Downey (Chair), Holly Dramis, Dotti Harness-Foster, Amy Landess, Tiffany Park, Matthew Hambrick, Helen Armstrong, Beth Wythe

[SPHFI Articles of Incorporation](#)

Operating Agreement

Contract Administrator

Land Lease

South Peninsula Hospital, Inc.

Board of Directors

President  Aaron Weissner	Vice President  Preston Simmons	Secretary  Beth Wythe	Treasurer  Michael Dye	 Christopher Landess, MD	 Matthew Bullard	 Jim Anderson	 Edson Knapp, MD	 Kim Frost	 Bernadette Wilson	 Ken Ciccoli
---	---	---	--	--	--	--	--	--	--	--

Committees: Executive • Finance • Governance

SPH Medical Staff

Chief of Staff



Sarah Roberts, MD

Medical Executive Committee

Nathan Kincaid, MD; Hans Amen, DO; Brian McCorison, CRNA; Brent Adcox, MD; Lucy Fisher, MD; Giulia Tortora, MD

Medical Providers

[Teamsters Local 959](#)
[Collective Bargaining Agreement](#)

Operational needs & strategies



SPH CEO

Ryan Smith

Funding & directives

Leadership Team of SPH

COO  Rachael Kincaid, DNP	CFO  Anna Hermanson	CMO  Christina Tuomi, DO	CNO  Amber Gall, RN
---	---	---	---

DIRECT REPORTS ▲ STAFF, RESOURCES & DEPARTMENTS ▲ COMMITTEES

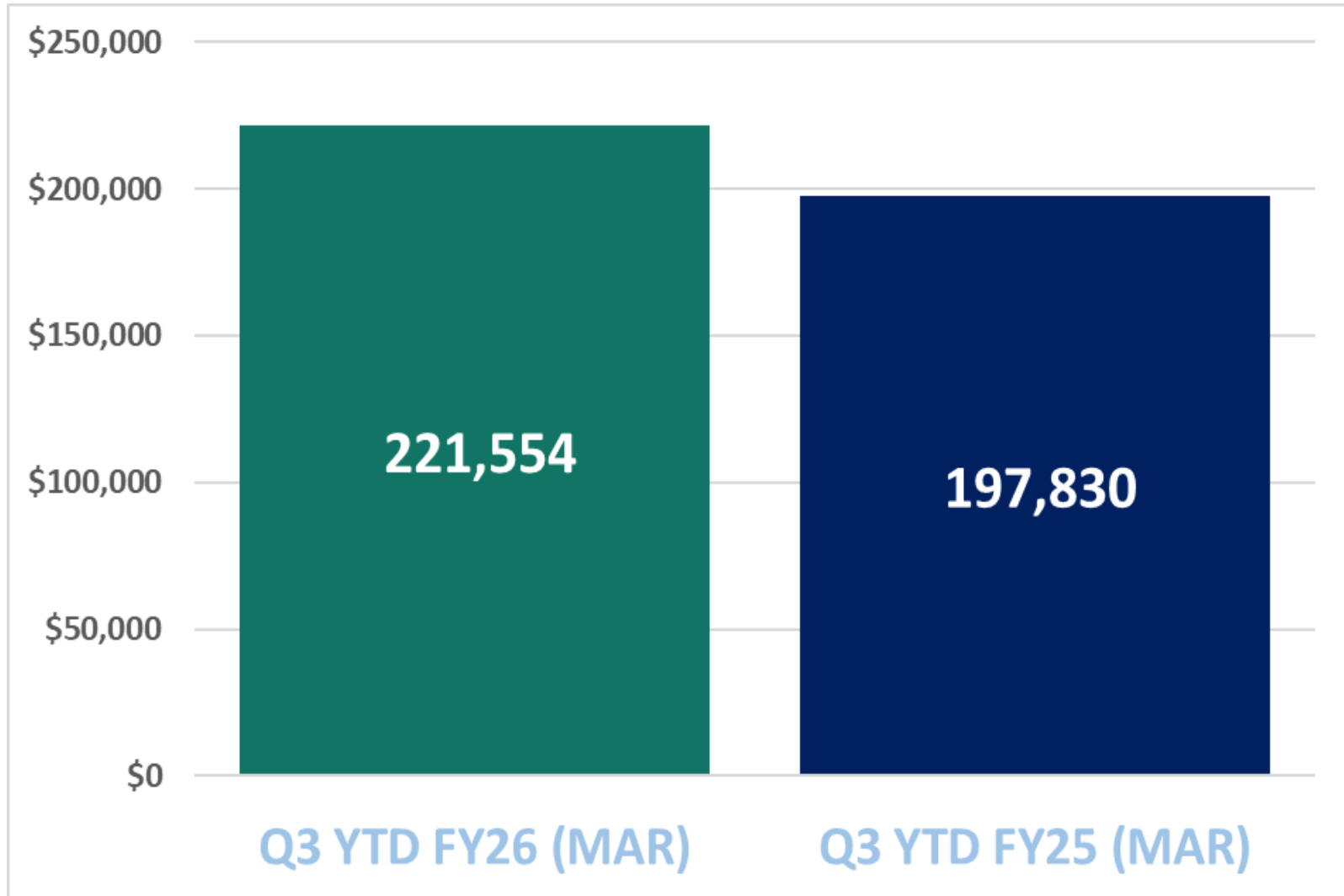
SPH Auxiliary



Gross Patient Revenue-Q3 YTD FY26

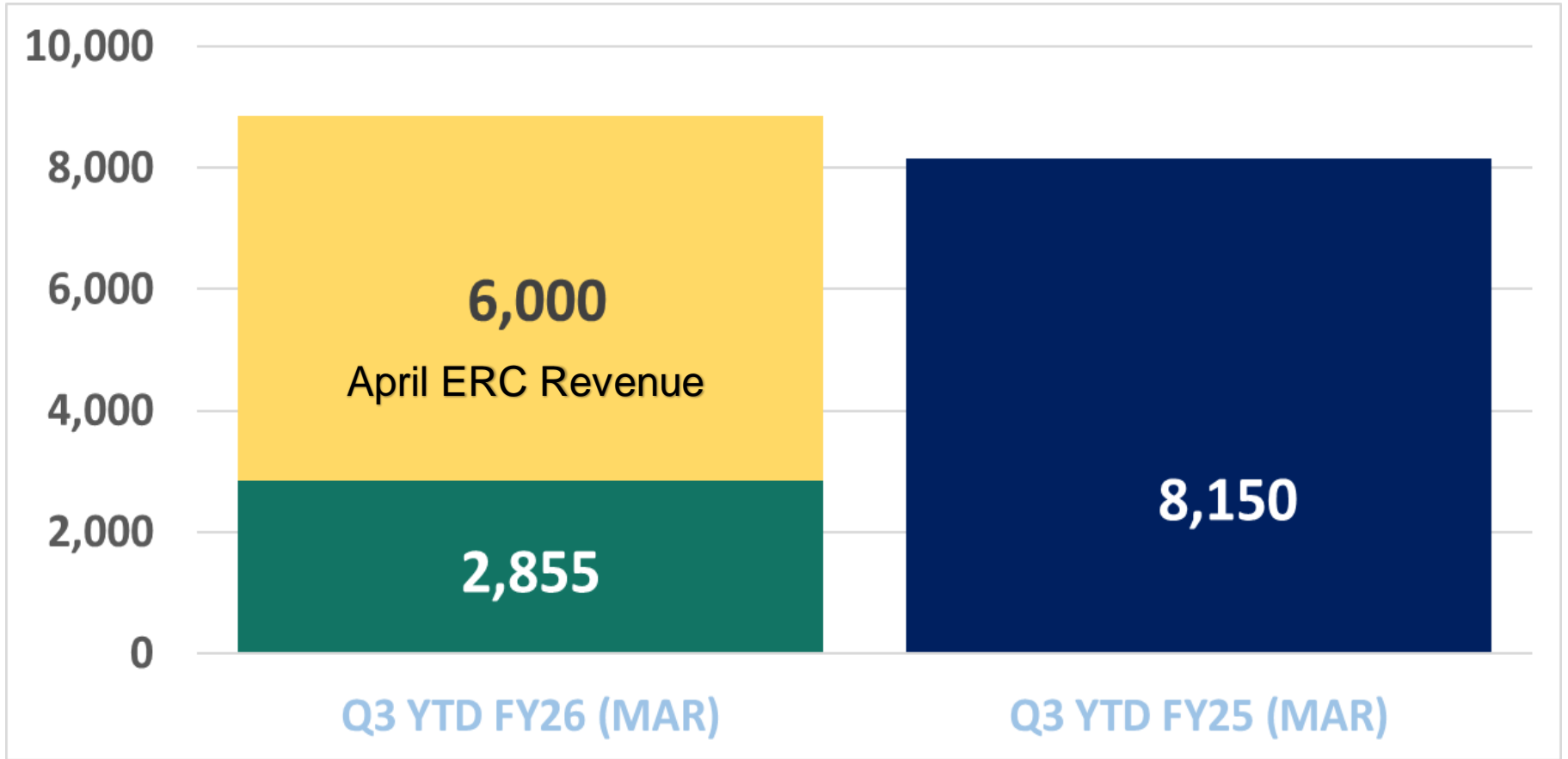
(in thousands)

12% Increase over PY



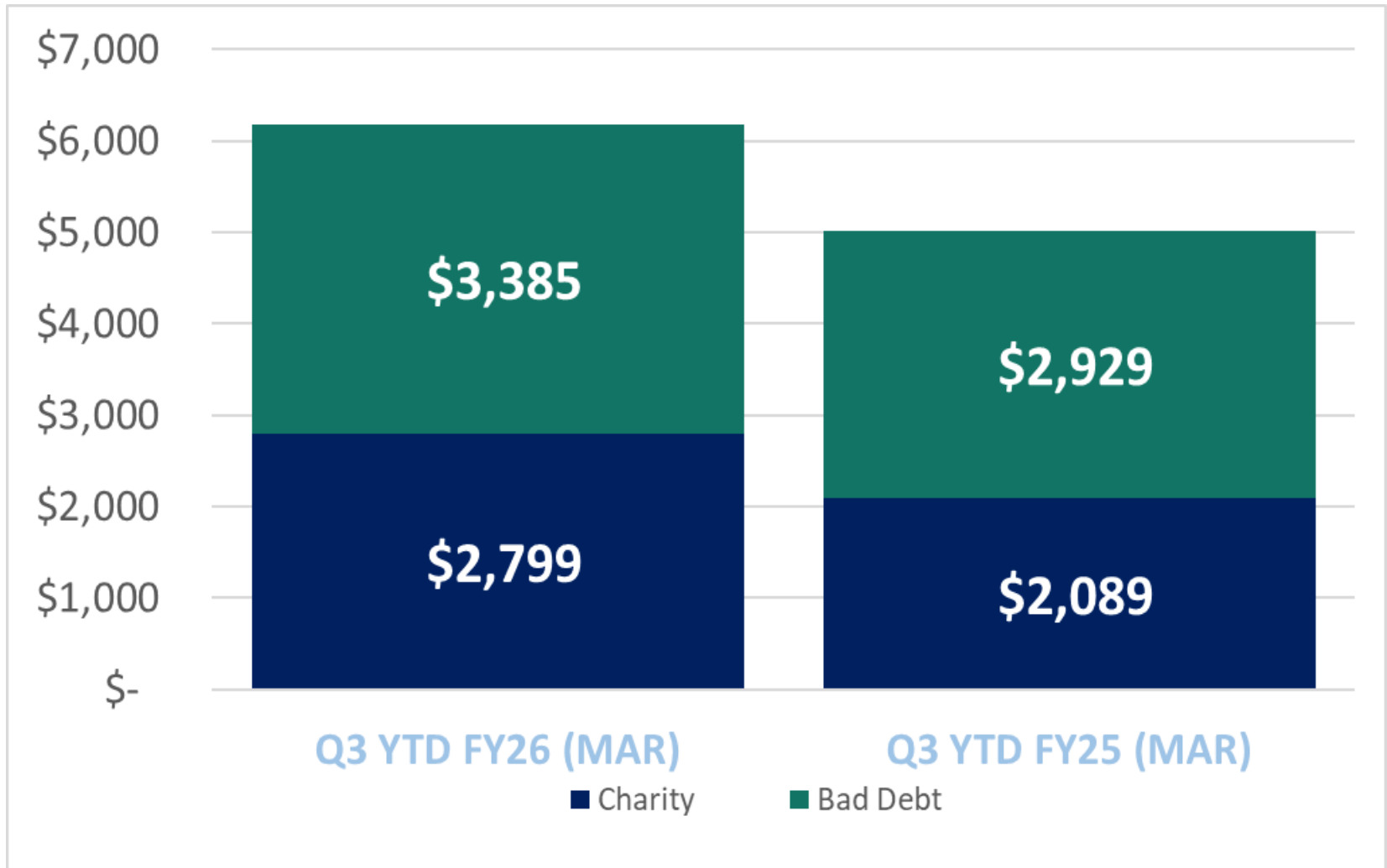
Net Income-Q3 YTD FY26

(in thousands)



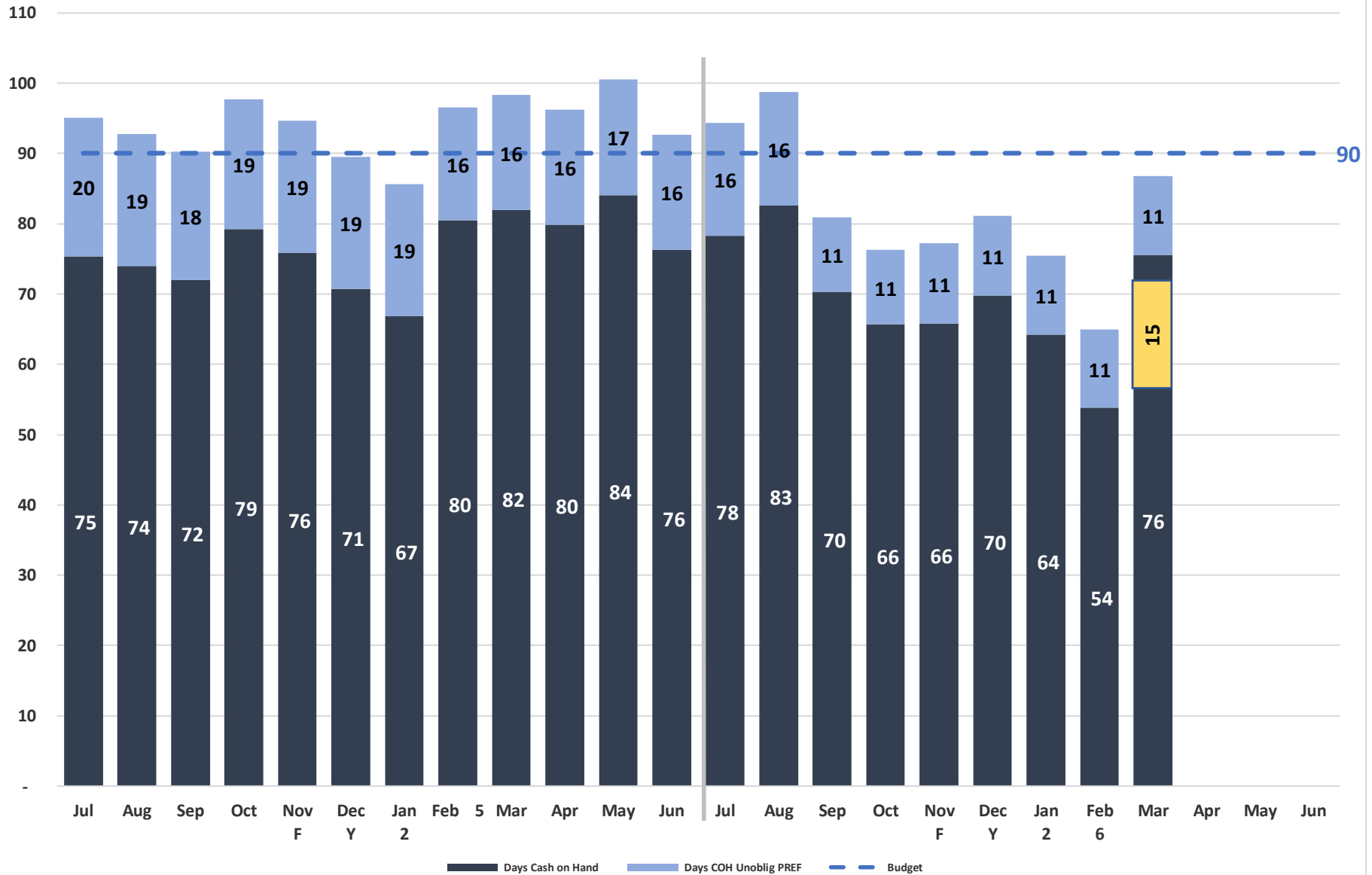
Charity Care & Bad Debt-Q3 YTD FY26

(in thousands)



Days Cash On Hand

SPH Operating Cash & Unobligated PREF / (Operating Expenses YTD / Number of Days)





Supporting the

FUTURE NEEDS OF THE COMMUNITY

UPDATE

Update critical infrastructure to ensure sustainability

WHAT

Replacement of generator plant and other aging systems

WHY

Replacing and relocating the generator plant opens additional usable space in the hospital, while installing a new, more efficient generator **enhances** reliability and **ensures** uninterrupted power. Numerous other aging systems are at or beyond their functional use and expensive to maintain.

WHEN

Year 1

COST

\$5 million

FUNDING

Congressional funds

MAXIMIZE

Finish existing space & investments to expand our care

WHAT

Finish out shelled space to relocate and expand pharmacy and infusion clinic, as approved by the Alaska Certificate of Need program

WHY

By **completing** the hospital's unfinished 11,000-square-foot lower level, we can provide more comfortable, timely care to an increasing number of patients, while also meeting modern health and safety standards.

WHEN

Year 2

COST

\$7 million

FUNDING

Plant Replacement and Expansion Fund (PREF) and loans

GROW

Acquire real estate for hospital campus expansion

WHAT

Acquire nearby buildings and/or land to expand hospital campus

WHY

These purchases will allow us to **consolidate** services and continue to meet the needs of our community.

WHEN

As available

COST

Variable based on available properties

FUNDING

PREF and operational revenue

CONSOLIDATE

Consolidate clinics to improve patient experience & reduce costs

WHAT

Build a medical office building and urgent care clinic

WHY

A new medical office building will streamline access to care by consolidating our offices, reducing the need for patients to navigate multiple locations and **improving patient experience.**

WHEN

Year 3

COST

\$15 - \$20 million

FUNDING

General obligation bonds



77%

think hospital services and facilities need to increase to meet future community needs.

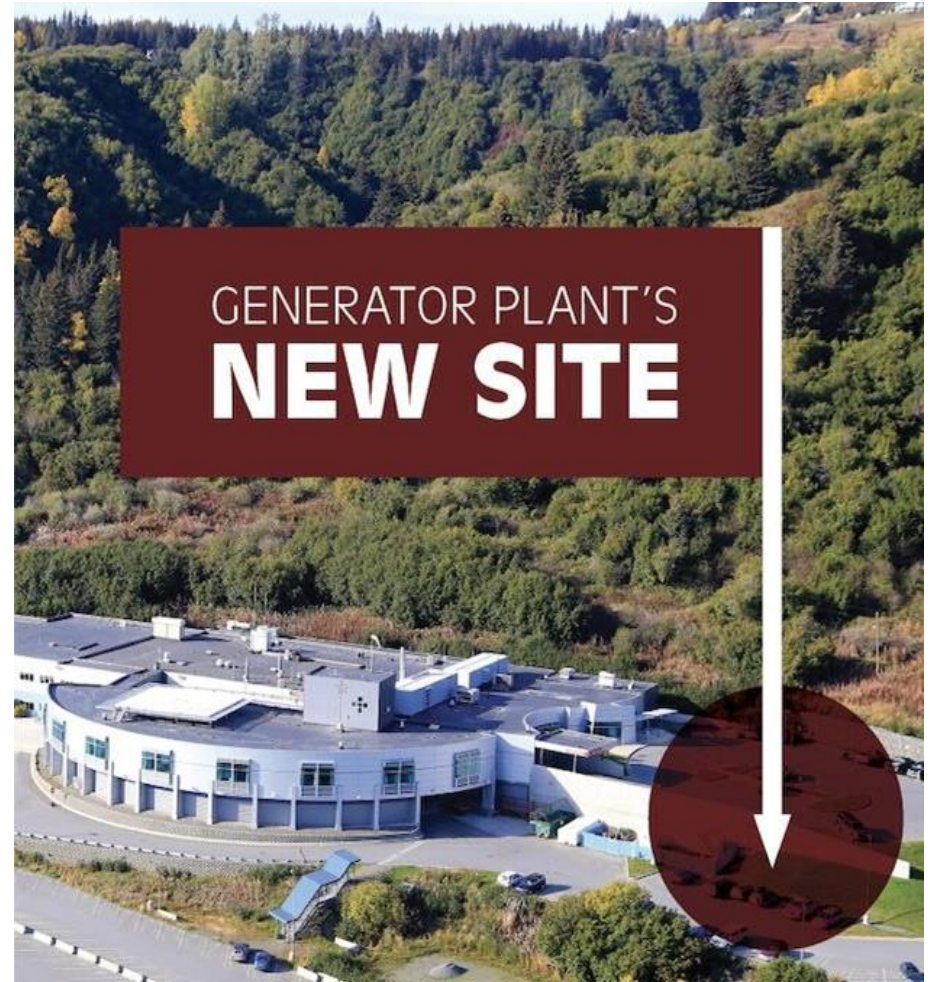
84%

said they would consider supporting a bond.

UPDATE

Upgrade critical infrastructure to ensure sustainability

Nearly 70 of the hospital's mechanical systems are outdated and require immediate replacement.



MAXIMIZE

Finish existing space & investments to expand our care

Complete unfinished 11,000-square-foot lower level to relocate and expand pharmacy and infusion clinic



Feedback from previous community conversations in Homer and Anchor Point in November

Continue growing local healthcare specialists

Concerns about high prices – Urgent Care Options

Concerns about buildings: buying buildings; who owns buildings; value of buildings

Appreciation for great care

Board of Directors - elections vs appointment – in area vs out of area

Questions about Senior Care for the future

Kudos for wellness offerings (SPARC walks, Wellness Wednesdays, Health Fair, etc)

All feedback is at www.sphosp.org/about/strategic-plan

New Service Line Providers



Frederick Freeman, MD – ENT

*Full-time ENT joining the Specialty Clinic
Coming May 2026*



Teresa Thompson, DNP

*Nurse Practitioner specializing in ENT
Coming May 2026 - will work primarily in Soldotna*



Kara Zimmerman, PA

*PA specializing in Urgent Care
Coming May 2026*

Rural Health Transformation Program Basics



The RHTP is a **one-time, five-year \$50 billion federal initiative** to catalyze rural health care delivery transformation and improve access and health outcomes across the country.



Alaska submitted application for funding, November 2025.



The Centers for Medicare and Medicaid Services (CMS) awarded Alaska **\$272 million** to allocate between Jan and Oct 2026.

5

Examples of Restrictions:

No new construction * Cannot pay for a patient's care, transport or lodging * Cannot replace existing funding

SPH Letters of Interest Submitted 3/11/26

- Phase 1 or Phase 1 & 2 of Certificate of Need Project – Pharmacy & Infusion
- Long Term Care Lift System
- Kitchen Updates
- Cardiopulmonary Rehab Service Line Launch
- Davinci Surgical Robot
- HVAC System Replacement
- AI Scribe
- Automated Medication Dispensing System
- Care Coordinator for Call Center
- Digital Signage
- Housing Coordinator
- Collaborative Managed Medicaid Demonstration with CPH & Moda
- Collaborative Physician Residency Program with Cordova & Petersburg

New SPH Website

Call (907) 235-8101 or View Phone Directory

South Peninsula Hospital

Campus Map & Locations | Calendar | Pay A Bill | Search

MyChart PATIENT PORTAL

FIND A PROVIDER | CLINICS & DEPARTMENTS | PATIENTS & VISITORS | HEALTH & WELLNESS | ABOUT US | CONTACT


Homer Medical Center

4204 Bartlett Street, Homer, Alaska • (907) 235-8586

Family Practice/Primary Care • Pediatrics • Medicare Wellness • Chronic Disease Management • Osteopathic Manipulative Treatment • Wound Care • Occupational Health • Allergy Treatment • Medication Management

Homer Medical Center is a family medical clinic providing comprehensive primary and urgent care for patients of all ages, from infants to seniors. Our mission is to provide personalized, respectful and evidence-based effective care to all our patients. We also collaborate closely with **Seaside Women's Care** for midwifery and OB/GYN services and with **Serene Waters Mental Health** for behavioral health.

Our physicians and nurse practitioners bring extensive education, training, and experience in



South Peninsula Hospital

Homer Medical Center

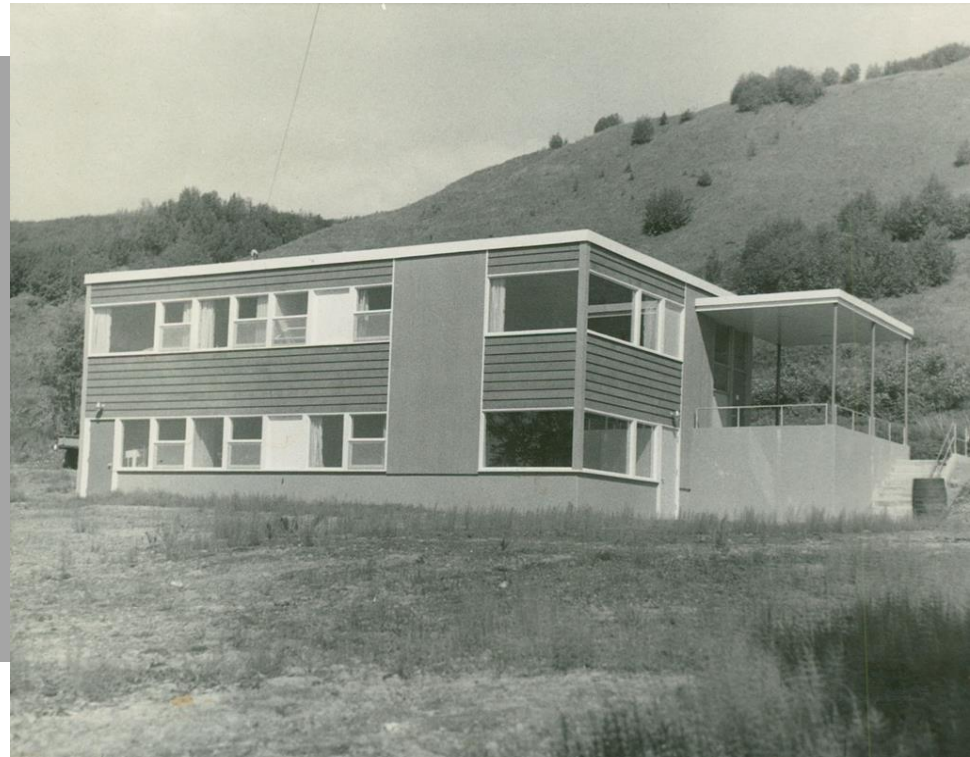
<https://sphosp.tundratechnologies.com/providers>

<https://sphosp.tundratechnologies.com/departments/homer-medical-center>

WE'RE TURNING 70!

OUR MISSION, YESTERDAY AND TODAY:

Promote community health and wellness by providing personalized, high quality, locally coordinated healthcare.



South Peninsula Hospital circa 1956

Thank you

QUESTIONS?



*South Peninsula Hospital is the healthcare provider of choice,
with a dynamic and dedicated team committed to service excellence.*