

South Peninsula Hospital, Inc.

**Quarterly Report
May 15, 2018**

Prepared for the
**Kenai Peninsula Borough
Assembly and Administration**

News from SPH

- Master Facilities Assessment
- FY 2019 Budget development
- Strategic Planning
- Collaboration with CPH
- Emergency Dept: Evident EMR



MFA Overview

- The Campus
- Our Facilities
 - Age of Hospital
- Environmental Surroundings
- Floor Plans
- Patient Care vs. Support Services
- Parking
- Challenges & Opportunities





South
Peninsula
Hospital

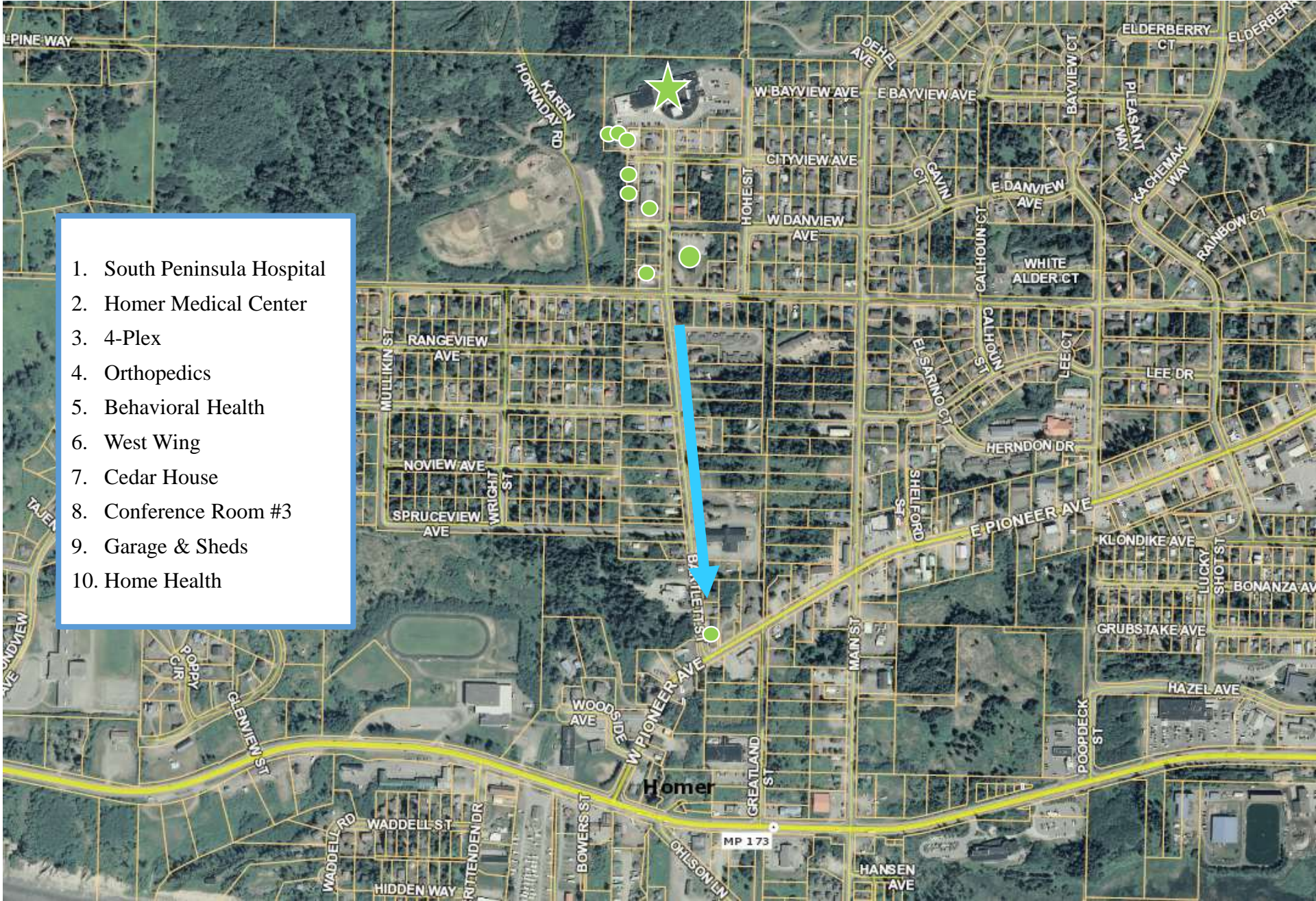




© A.C. productions

All Facility Locations

- 1. South Peninsula Hospital
- 2. Homer Medical Center
- 3. 4-Plex
- 4. Orthopedics
- 5. Behavioral Health
- 6. West Wing
- 7. Cedar House
- 8. Conference Room #3
- 9. Garage & Sheds
- 10. Home Health

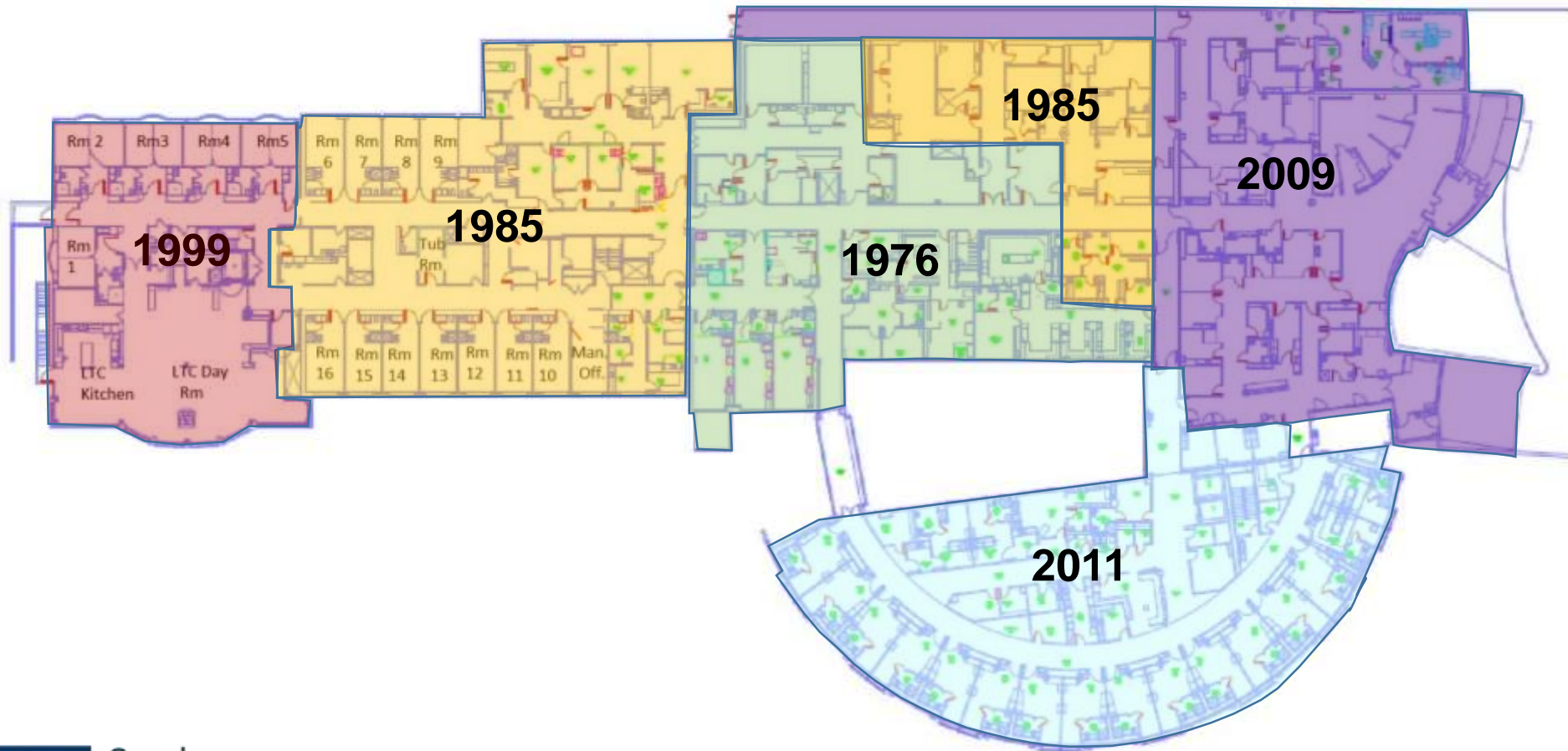


Owned vs. Leased (and Home Health is leased)

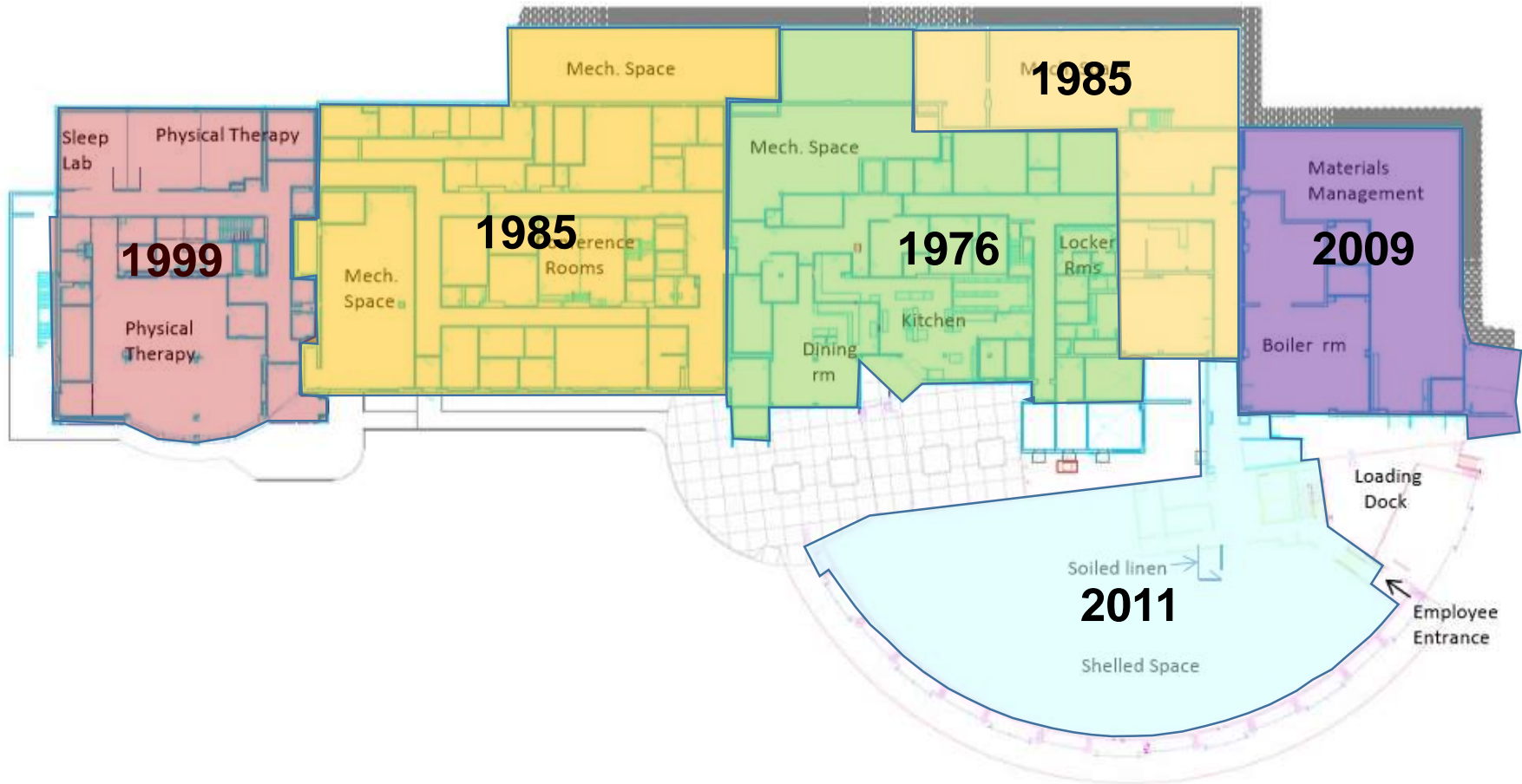
Owned ●
Leased ●



Second Floor Age of Areas



First Floor Age of Areas

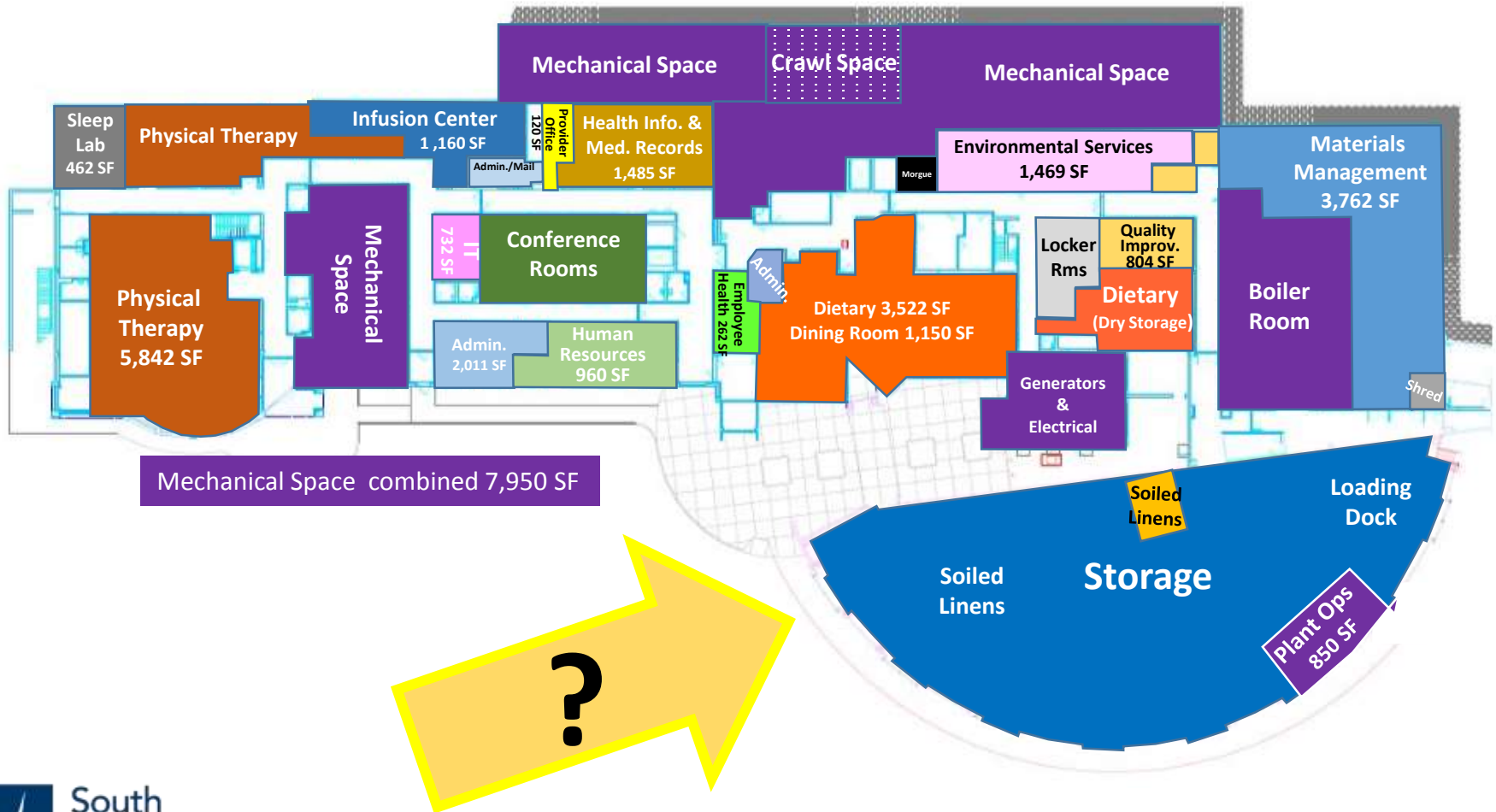


South Peninsula Hospital

- 4300 Bartlett St.
- 106,225 SF
- 1976/1985/1999/2009/2011

Plans by: RIM Architects

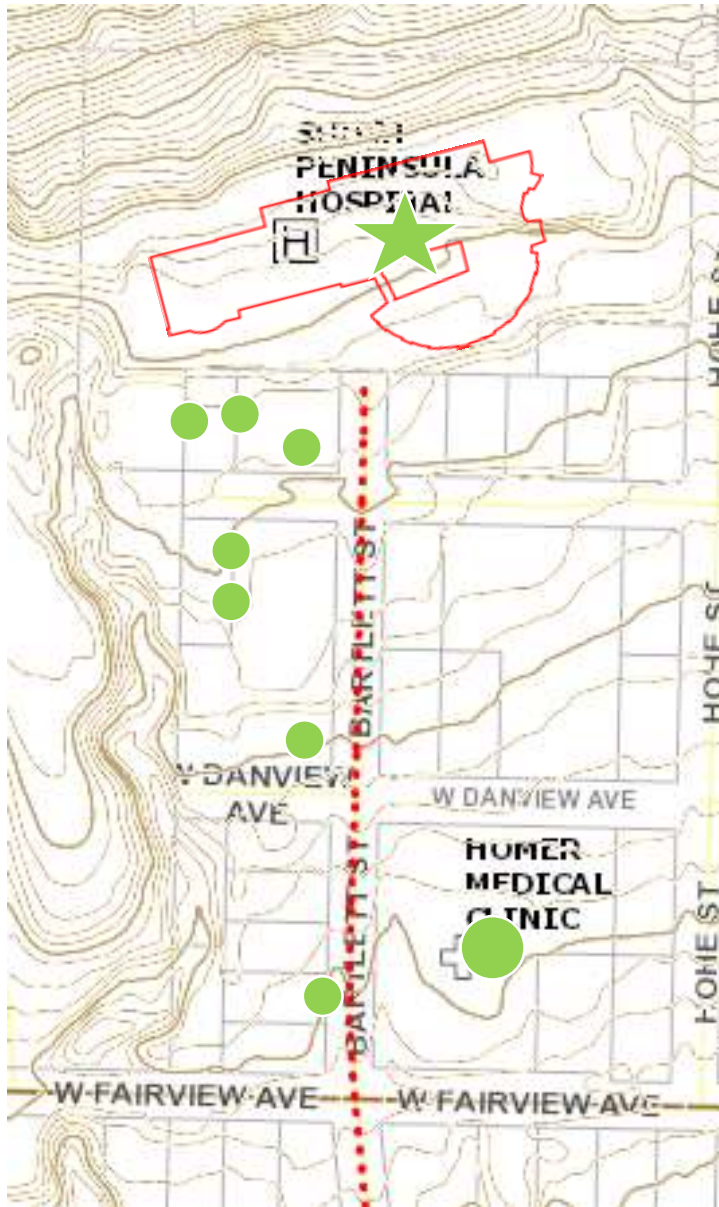
First Floor











Homer Medical Center

- 4136 Bartlett St.
- 10,520 SF
- 1985/2017
- Owned



Homer Medical Center Open House





South
Peninsula
Hospital



Sharing Space
Orange Box

Local National Organic
Partnership
Working to protect
our food and
the land we love





News from SPH

- Master Facilities Assessment
- FY 2019 Budget development
- Strategic Planning
- Collaboration with CPH
- Emergency Dept: Evident EMR

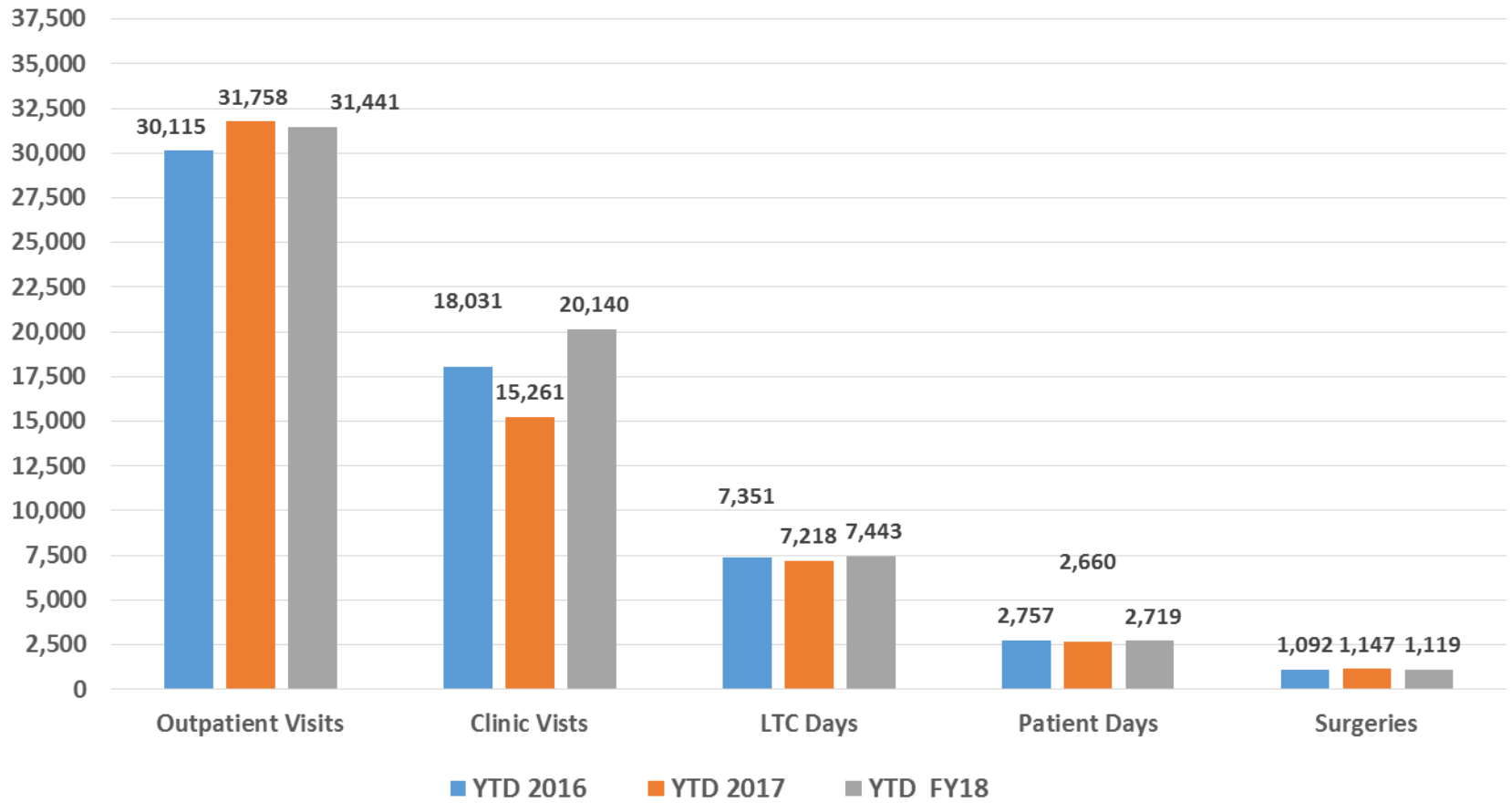


Financial Performance Overview

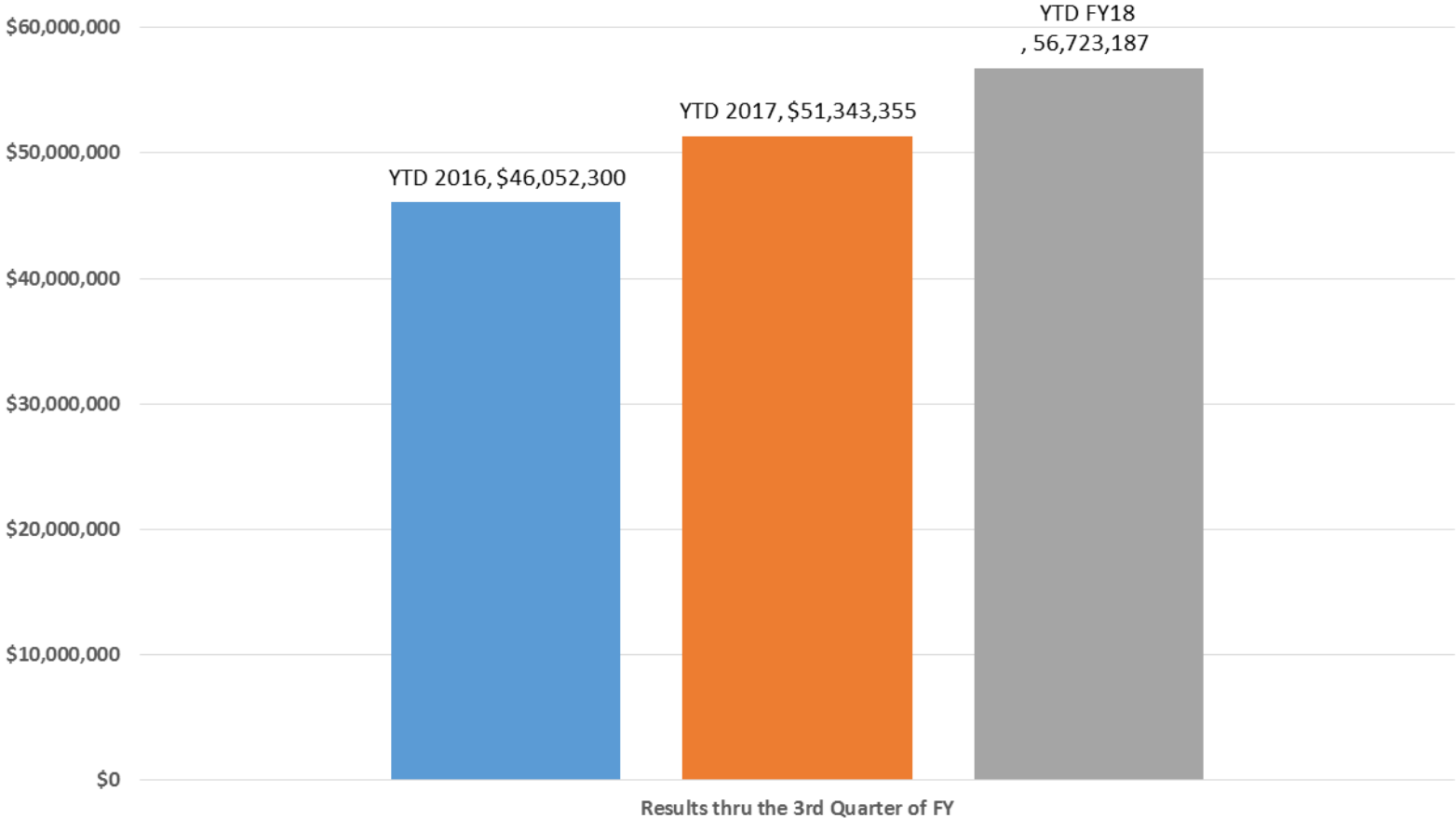


Patient/Resident Volumes

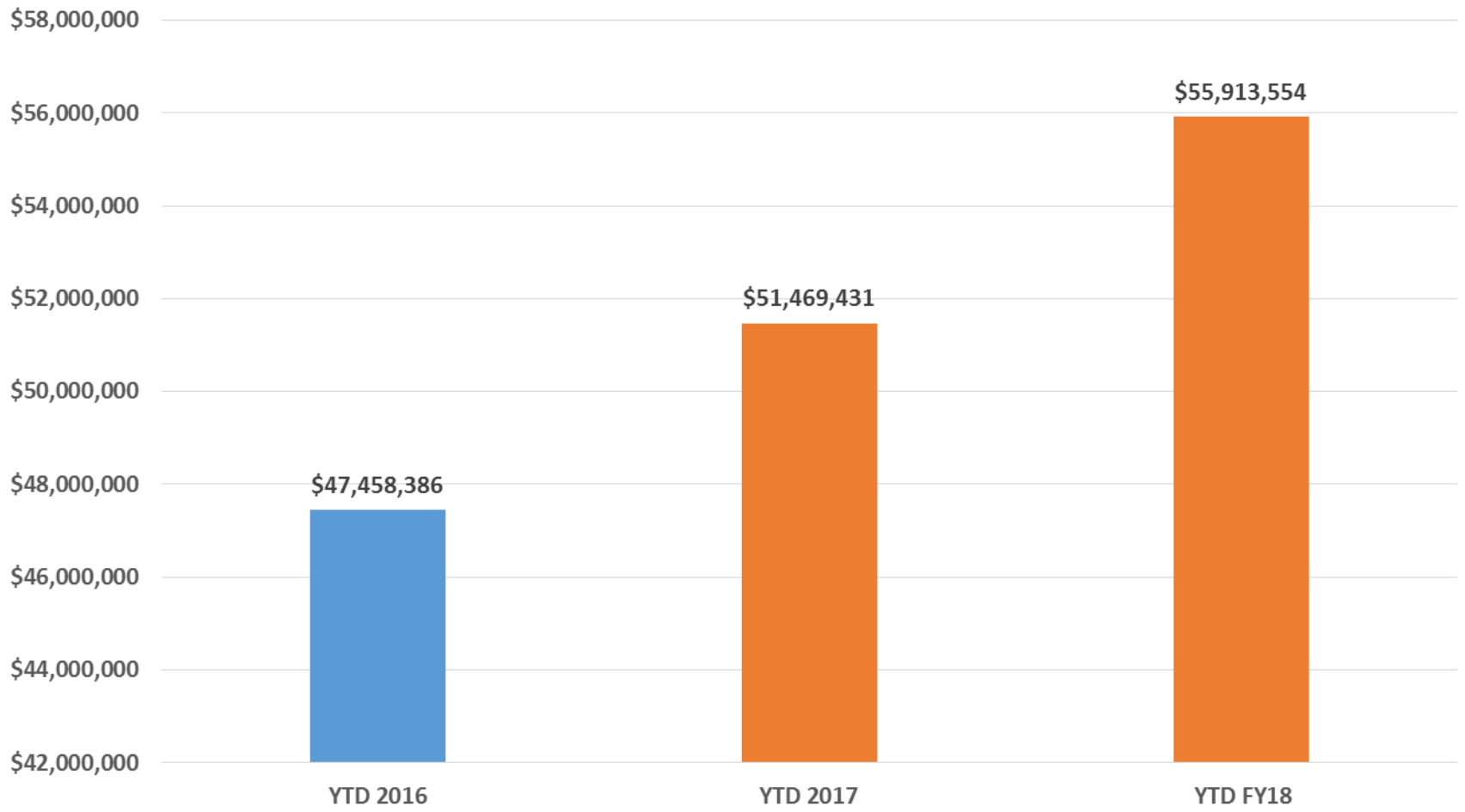
Key Statistics YTD Thru Mar 31 FY16 -FY017 - FY18



Net Patient Services Revenue YTD Fiscal Year 2016 - 2017- 2018

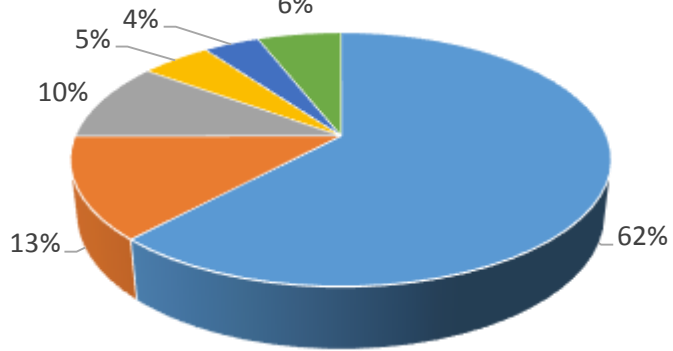


Operating Expenses YTD Fiscal Year Dec 2016 - 2017 - Q1 FY18

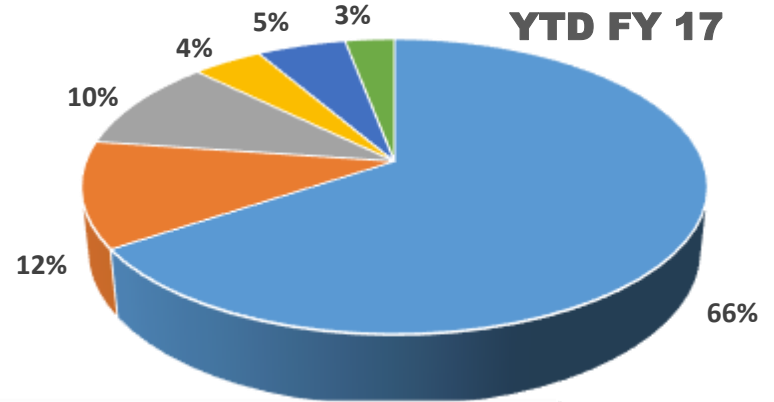


Operating Expenses

YTD FY 2016



YTD FY 17



YTD 2018

Salaries-Wages-Ben

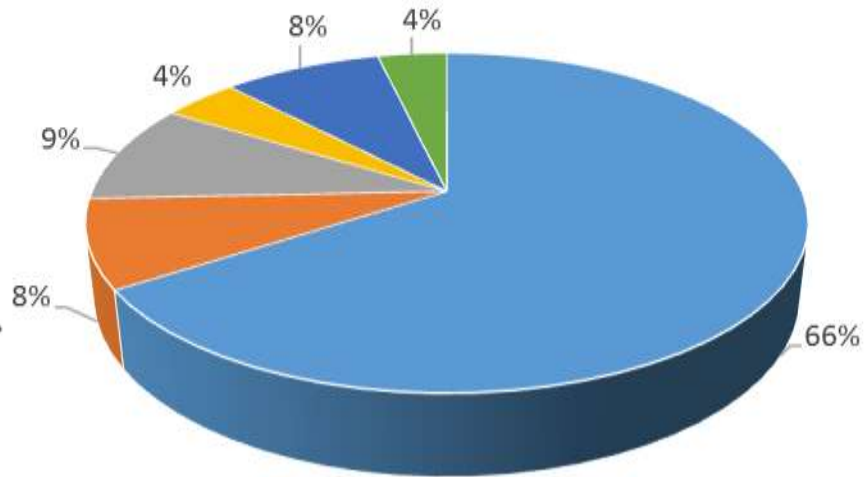
Prof. Fees/Contract Labor

Supplies

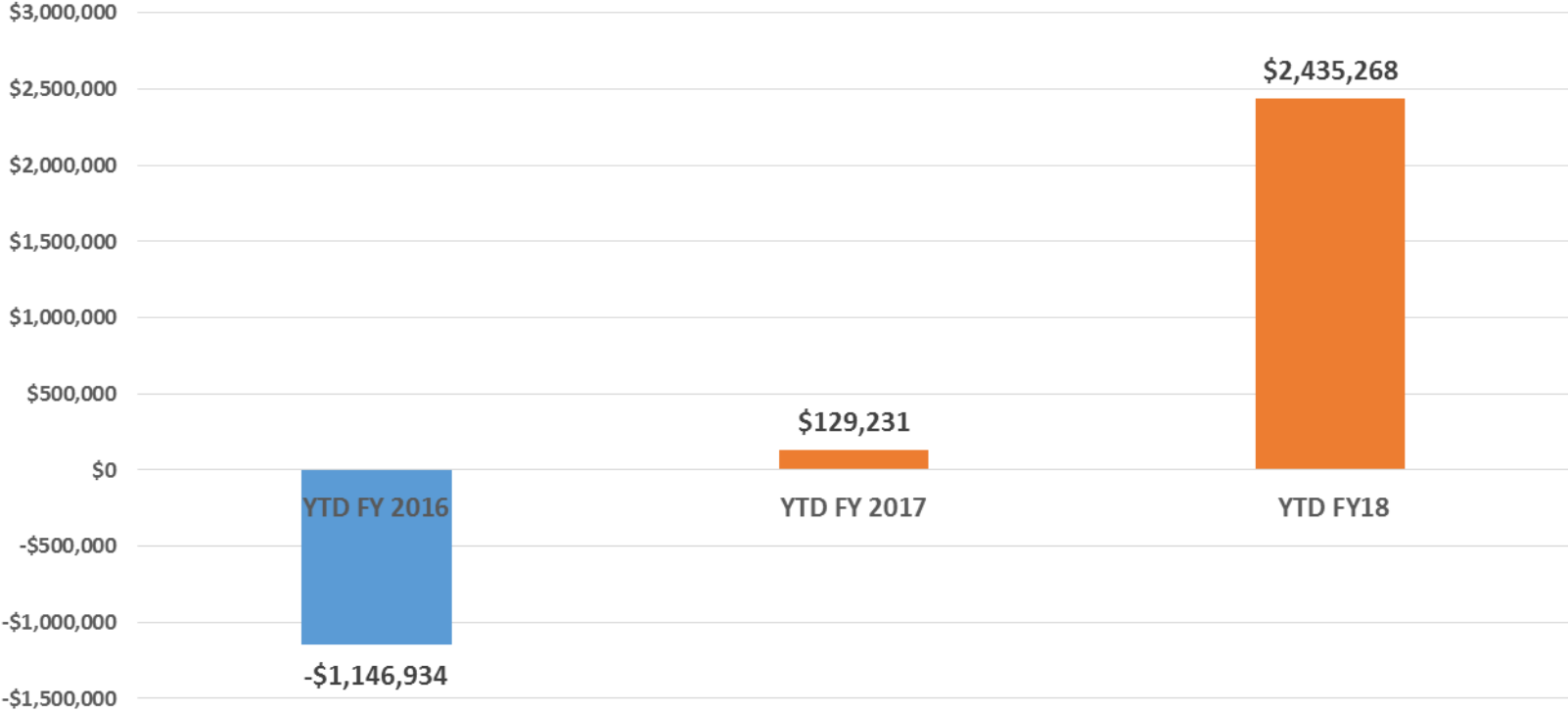
Depreciation

Facility/Related Exp.

Other



**Excess of Revenues over Expenses
Results thru 3rd Quarter
YTD FY- 2016-2017- 2018**



South Peninsula Hospital, Inc.

**Quarterly Report
May 15, 2018**

Prepared for the
**Kenai Peninsula Borough
Assembly and Administration**