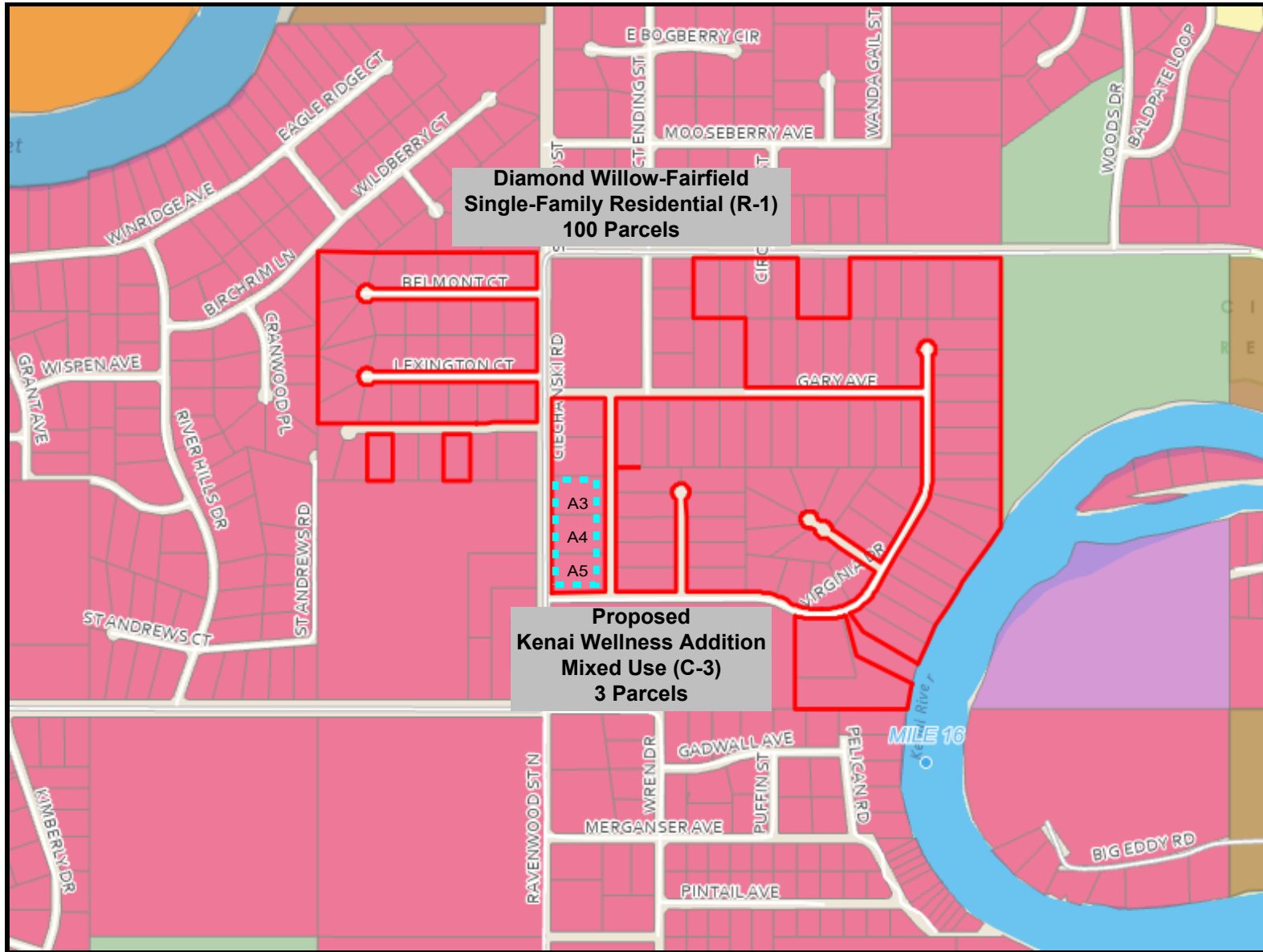




Local Option Zoning District (LOZD), Proposed Rezone, Diamond Willow - Kenai Wellness Estates Addition, Mixed Use (C-3)



Map created on Monday, September 16, 2024



The information depicted hereon is for a graphical representation only of best available sources. The Kenai Peninsula Borough assumes no responsibility for any errors on this map.