



SPH Quarterly Report

Prepared for

The Kenai Peninsula Borough
Assembly and Administration

February 7, 2023

South Peninsula Hospital is the healthcare provider of choice, with a dynamic and dedicated team committed to service excellence.

SOUTH PENINSULA HOSPITAL OWNERSHIP AND GOVERNANCE

KENAI PENINSULA BOROUGH

South Kenai Peninsula Hospital Service Area Board

Kathryn Ault, Helen Armstrong, Ralph Broshes, Amber Cabana, Tim Daugharty, Willy Dunne, Roberta Highland, Judith Lund, Tim Whip
[Ordinance 69-4](#)
[Ordinance 73-3](#)
[Ordinance 2013-31](#)



Kenai Peninsula Borough Assembly

Lands Committee • Finance Committee

Borough Mayor's Office

Borough Mayor
 Mike Navarre (interim)
Departments
 Finance
 Purchasing
 Capital Projects

Operating Agreement

City of Homer

Homer City Mayor
 Ken Castner

City Council
 Donna Aderhold, Shelly Erickson, Storm Hansen-Cavazos, Caroline Venuti, Rachel Lord, Jason Davis

South Peninsula Hospital, Inc.

Board of Directors



Committees: Executive • Finance • Governance

SPH Foundation, Inc.

Executive Director

Jeffrey Eide

Board of Trustees

Clyde Boyer, Kelly Cooper, Angie Newby, Dottie Harness-Foster, Judith Lund, Holly Dramis, Amy Landess

[SPHFI Articles of Incorporation](#)

SPH Medical Staff

Chief of Staff



Christopher Landess, MD

Medical Executive Committee

Sarah Roberts, MD; Christy Martinez, MD; Cherie Ingles, MD; Brent Adcox, MD; Julie McCarron, CNM, ANP; Paula Godfrey, DO

Medical Providers

Teamsters

Local 959

[Collective Bargaining Agreement](#)

Operational needs & strategies



SPH CEO

Ryan Smith

Funding & directives

Leadership Team of SPH



DIRECT REPORTS ▲ STAFF, RESOURCES & DEPARTMENTS ▲ COMMITTEES

SPH Auxiliary

South Peninsula Hospital Board of Directors Officers 2023



Kelly Cooper
President



Aaron Weisser
Vice President



Walter Partridge
Treasurer



Julie Woodworth
Secretary

South Peninsula Hospital Medical Staff Leaders 2023



Christopher Landess, MD
Chief of Staff



Sarah Roberts, MD
Vice Chief of Staff



Christy Martinez, MD
Credentials Chair



Paula Godfrey, DO
Peer Review Cmte Chair



Cherie Ingles, MD
MEC Member-at-Large



Brent Adcox, MD
MEC Member-at-Large



Julie McCarron, CNM
MEC APP Member-at-Large

Medical Staff

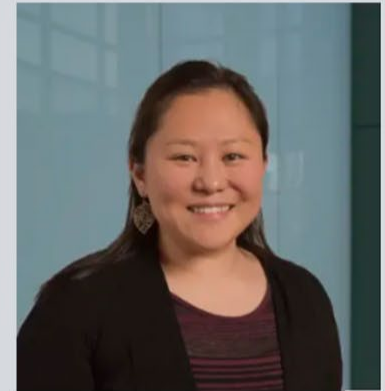
COMING SOON!



Ragina
Lancaster, DO
Family Medicine



Emma Mayfield, DO
Homer Medical Center



Kira Bendixen, DO
Hospitalist

NEW ED PHYSICIANS



Dr. Erin Murphy



Dr. Jesse Wray



Dr. Billy Oley

South Peninsula Hospital New Leadership



Anna Hermanson
CFO

Capital Updates

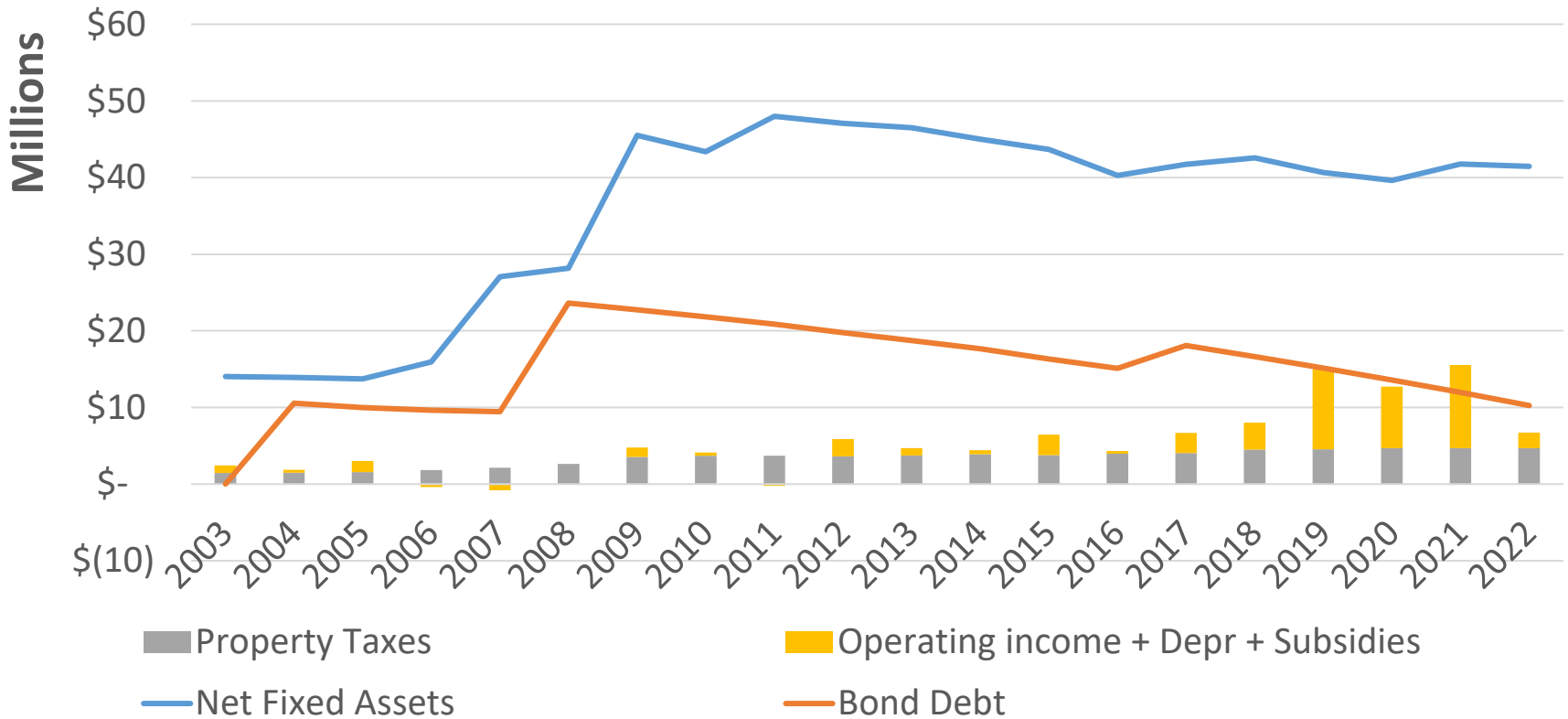
- Infrastructure Project
 - Federal Congressional Priorities List for the Kenai Peninsula Borough
- Certificate of Need
 - Pharmacy, Infusion, Nuclear Medicine
 - Feb 15 & 16 on site kick off with Architects Alaska
- 2024 Capital Budget
- Facility Master Plan



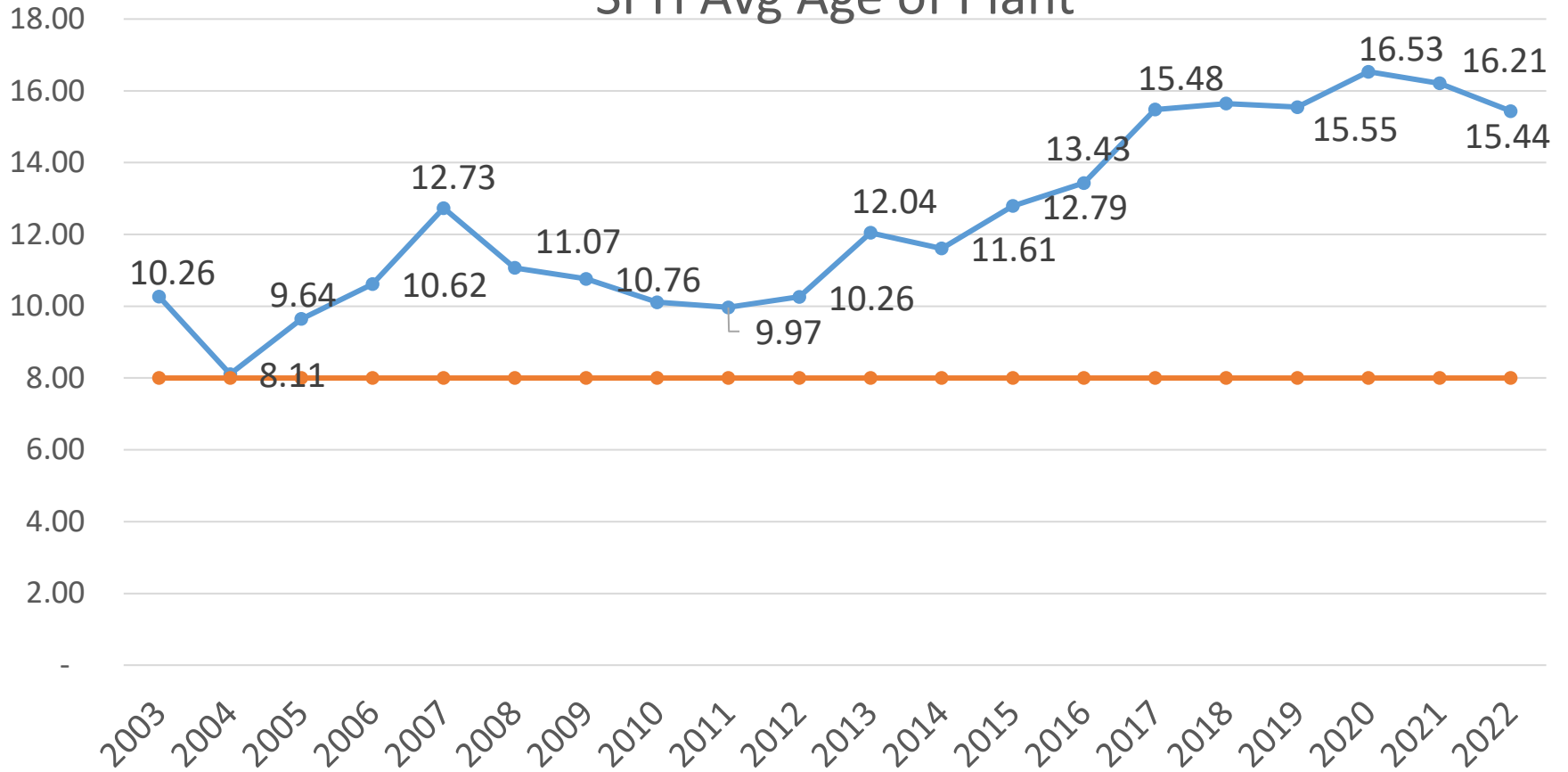
South
Peninsula
Hospital

Infrastructure and Deferred Maintenance Report

SPH Ability to Replace Major Infrastructure with Property Taxes + Operating Income

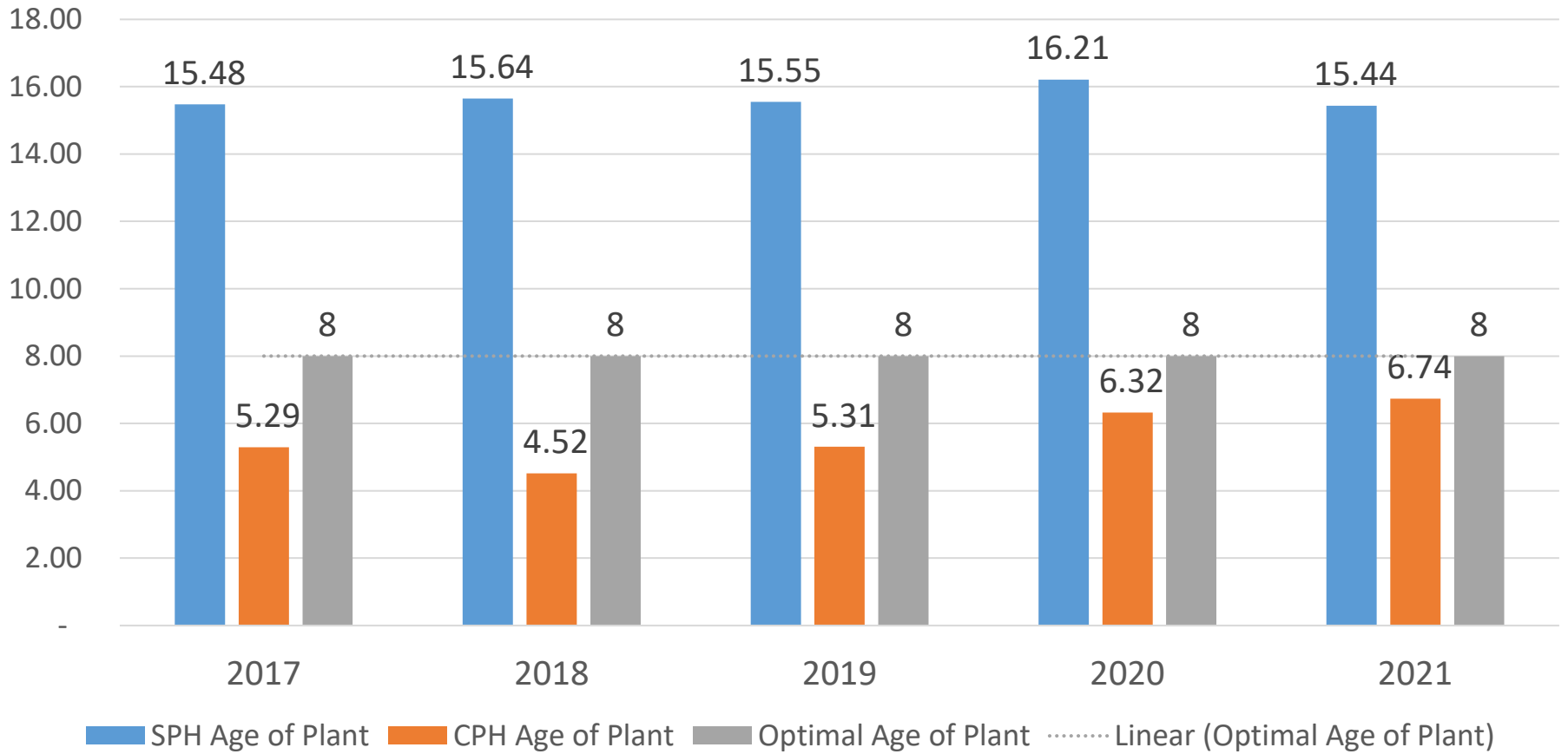


SPH Avg Age of Plant



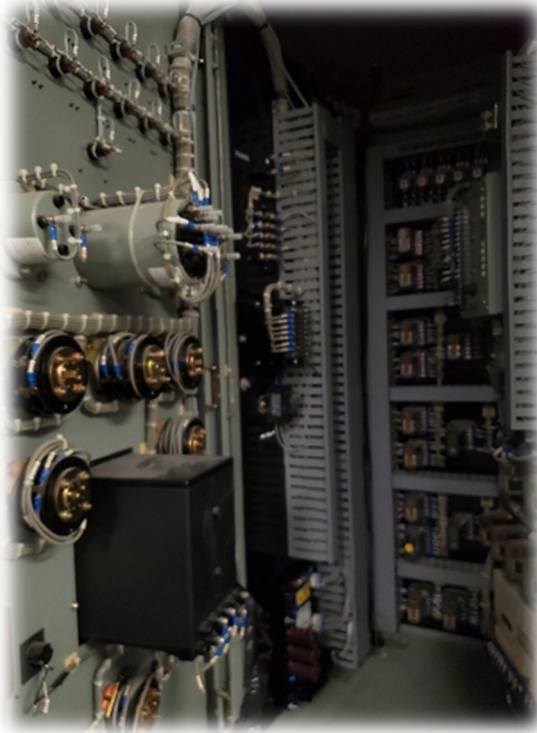
*Optimal age of plant for US Healthcare institutions is 8 years. SPH age of plant is considered “High” per national data comparisons.

KPB Hospital Comparative - Average Age of Plant





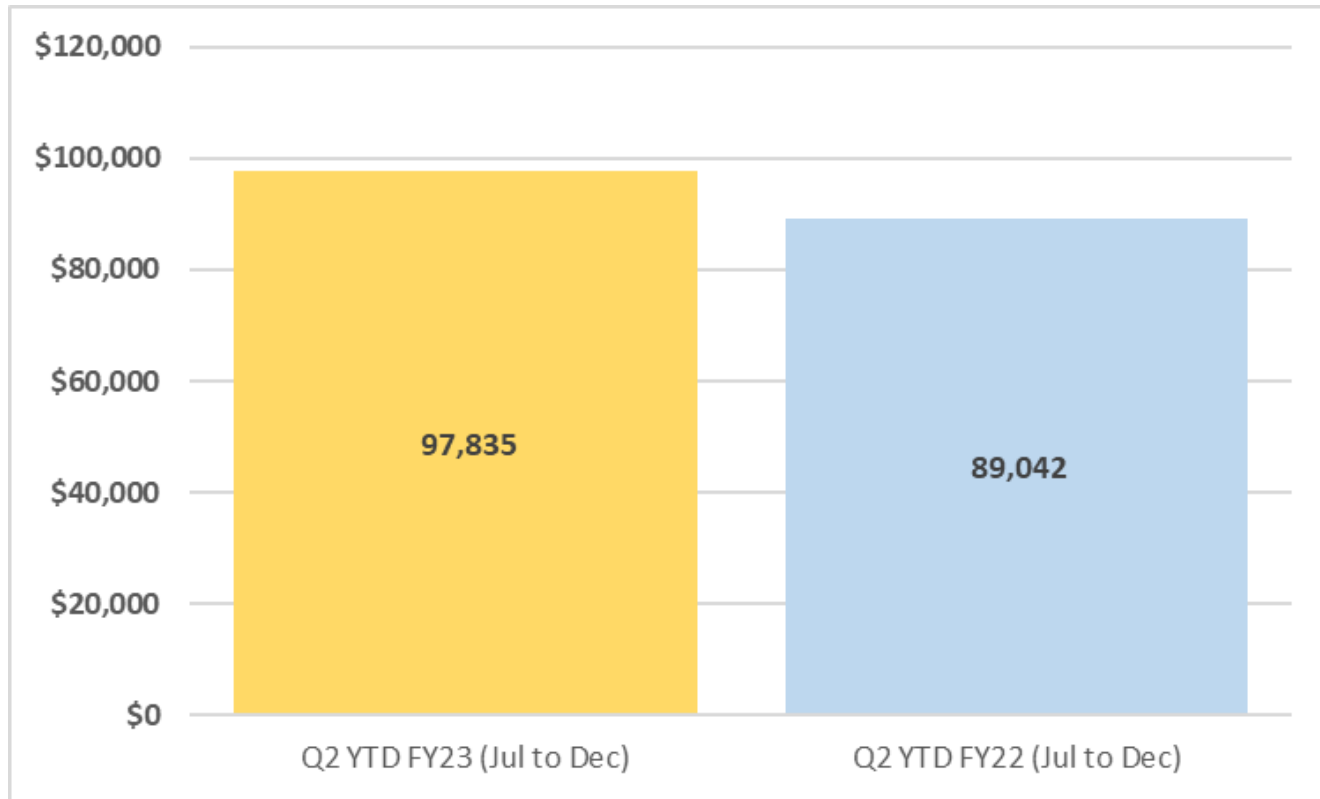




Second Quarter YTD FY 2023
(July 2022 – December 2022)
Financial Results
Unaudited

Gross Patient Revenue-Q2 YTD FY23

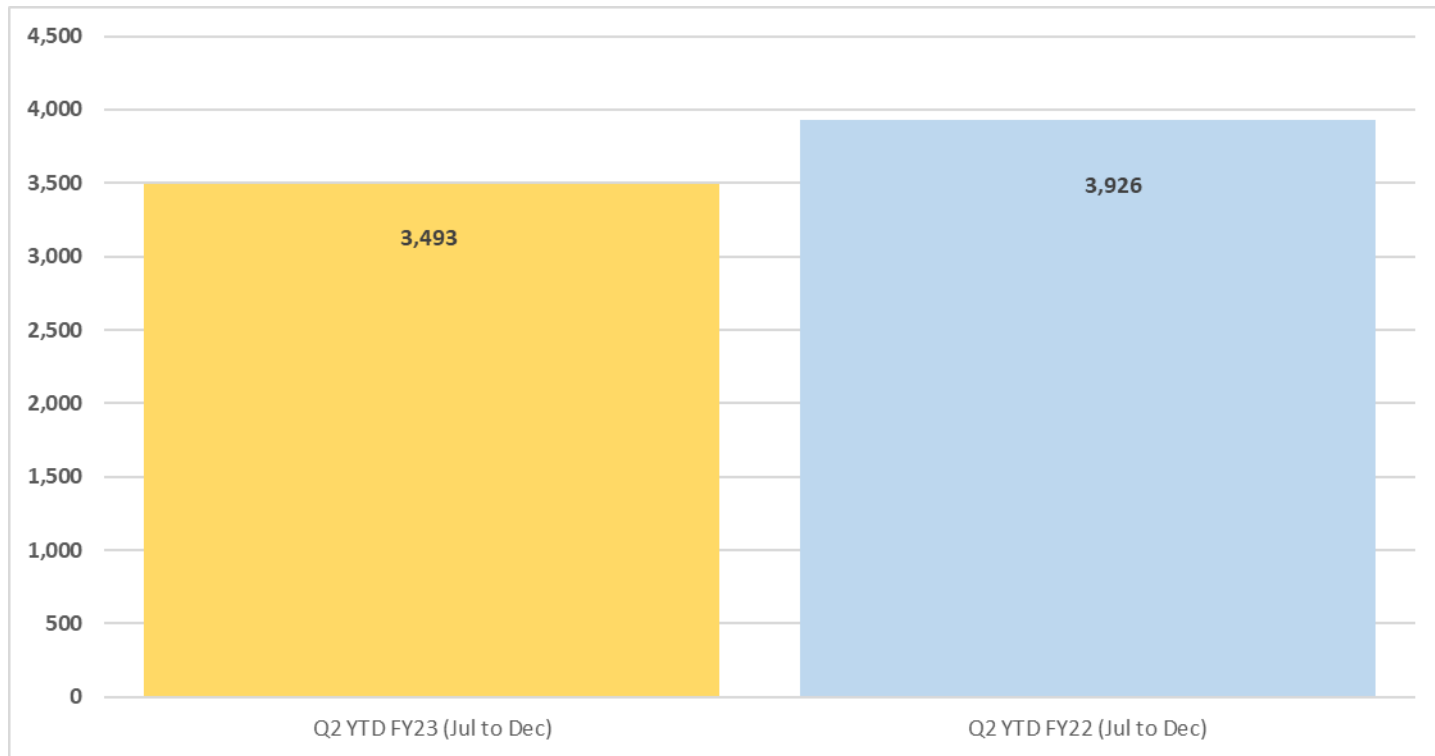
(in thousands)



South Peninsula Hospital is the healthcare provider of choice, with a dynamic and dedicated team committed to service excellence.

Net Income-Q2 YTD FY23

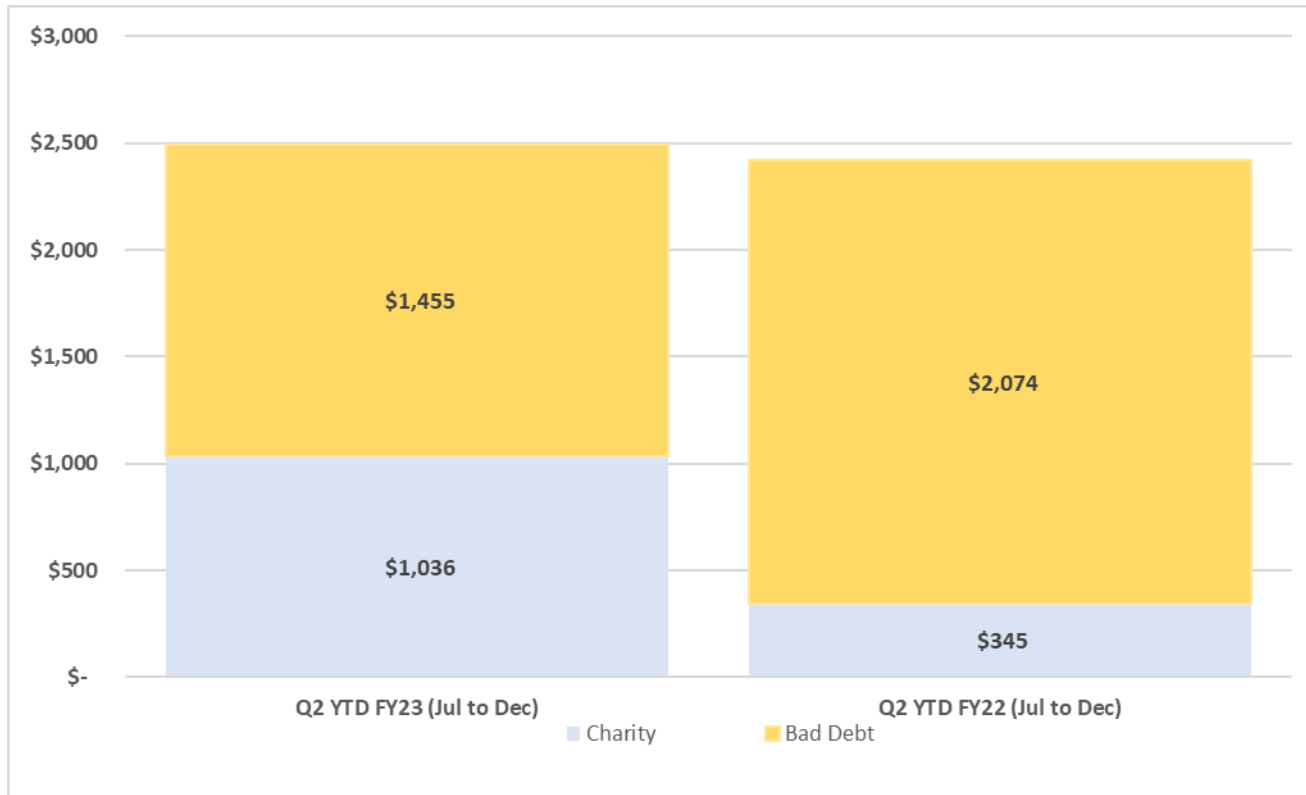
(in thousands)



South Peninsula Hospital is the healthcare provider of choice, with a dynamic and dedicated team committed to service excellence.

Charity Care & Bad Debt-Q2 YTD FY23

(in thousands)



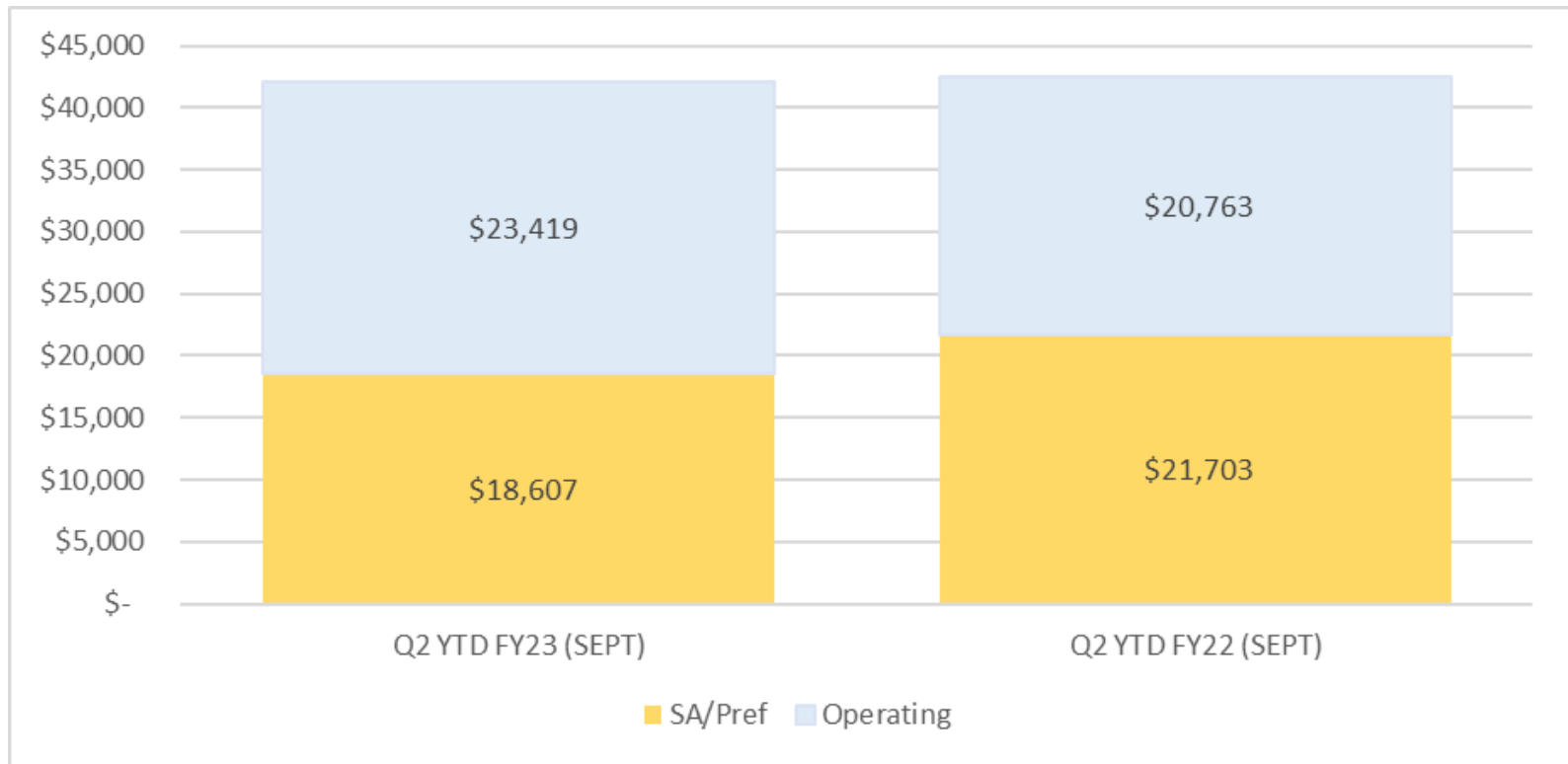
Community Benefit

South Peninsula Hospital is the healthcare provider of choice, with a dynamic and dedicated team committed to service excellence.

Cash & Cash Equivalents-Q2 YTD FY23

Operating Cash, SA Cash, PREF

(in thousands)



Updates

- Nurse Licensure Compact



Nurse Licensure Compact (NLC)

- Union Contract Negotiations



**South
Peninsula
Hospital**



**Teamsters
Local 959**

Homeless Community Resource Connect



Need Assistance?
HOUSING ♦ FOOD ♦ BASIC NEEDS

Community Resource Connect
Tuesday, January 31 ♦ 11am-3pm

IN HOMER
 SPARC
 600 Sterling Hwy.
 next to Homer Middle School

AND

IN ANCHOR POINT
 Anchor Point Food Pantry
 34361 Old Sterling Hwy.
 next to Anchor River Inn Store

Free supplies: Emergency Gear, Backpacks, Comfort Packs, Laundry/ Shower/Clothing Vouchers, Food to Go, Sleeping Bags, Hygiene Kits

Get connected to: Over 20 local vendors offering resources related to housing, food, employment info, health care and mental health information, free health screenings, and more!

FREE LOCAL TRANSPORTATION TO AND FROM BOTH LOCATIONS!
 In Homer: call (907) 399-8008 ♦ In Anchor Point: Call (907) 299-2188

Community Resource Connect is a free 1-day community resource event for anyone experiencing homelessness or who is at risk of homelessness, and anyone in need of resources.

All are welcome and eligible to attend this one day, in-person event!

Join the **PUBLIC Facebook group Community Resource Connect** for updates!

Resources at each location may vary. Part of Kenai Peninsula Project Homeless Connect, whose mission is to help those who are experiencing or at risk for homelessness achieve stability.

HOMER COMMUNITY RESOURCE CONNECT