



South
Peninsula
Hospital

SPH Quarterly Report

Prepared for

The Kenai Peninsula Borough Assembly and Administration

August 15, 2023

South Peninsula Hospital is the healthcare provider of choice, with a dynamic and dedicated team committed to service excellence.



SOUTH PENINSULA HOSPITAL OWNERSHIP AND GOVERNANCE

KENAI PENINSULA BOROUGH

South Kenai Peninsula Hospital Service Area Board

Kathryn Ault, Helen Armstrong, Ralph Broshes, Amber Cabana, Tim Daugharty, Willy Dunne, Roberta Highland, Judith Lund, Tim Whip

[Ordinance 69-4](#)
[Ordinance 73-33](#)
[Ordinance 2013-31](#)

Advisory to Mayor & Assembly

Service Area Budget approval

SPH Service Area budget proposal

Kenai Peninsula Borough Assembly



Lands Committee · Finance Committee

Resolutions Ordinances Proposals

Borough Mayor's Office

Borough Mayor
Peter Micciche

Departments
Finance · Purchasing · Capital Projects

City of Homer

Homer City Mayor
Ken Castner
City Council

Donna Aderhold, Shelly Erickson, Storm Hansen-Cavasos, Caroline Venuti, Rachel Lord, Jason Davis

SPH Foundation, Inc.

Executive Director

Jeffrey Eide

Board of Trustees

Clyde Boyer, Kelly Cooper, Angie Newby, Dottie Harness-Foster, Judith Lund, Holly Dramis, Amy Landess

[SPHFI Articles of Incorporation](#)

Operating Agreement

Contract Administrator

Land Lease

South Peninsula Hospital, Inc.



Committees: Executive • Finance • Governance

SPH Medical Staff

Chief of Staff



Christopher Landess, MD

Medical Executive Committee

Sarah Roberts, MD; Christy Martinez, MD; Cherie Inglis, MD; Brent Adcox, MD; Julie McCarron, CNM, ANP; Paula Godfrey, DO

Medical Providers

Teamsters Local 959

[Collective Bargaining Agreement](#)

Operational needs & strategies

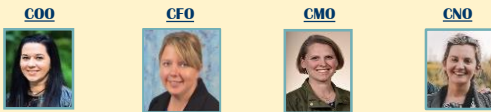


SPH CEO

Ryan Smith

Funding & directives

Leadership Team of SPH



Angela Hinnegan, Anna Hermanson, Christina Tuomi, DNP, Rachael Kincaid, DNP

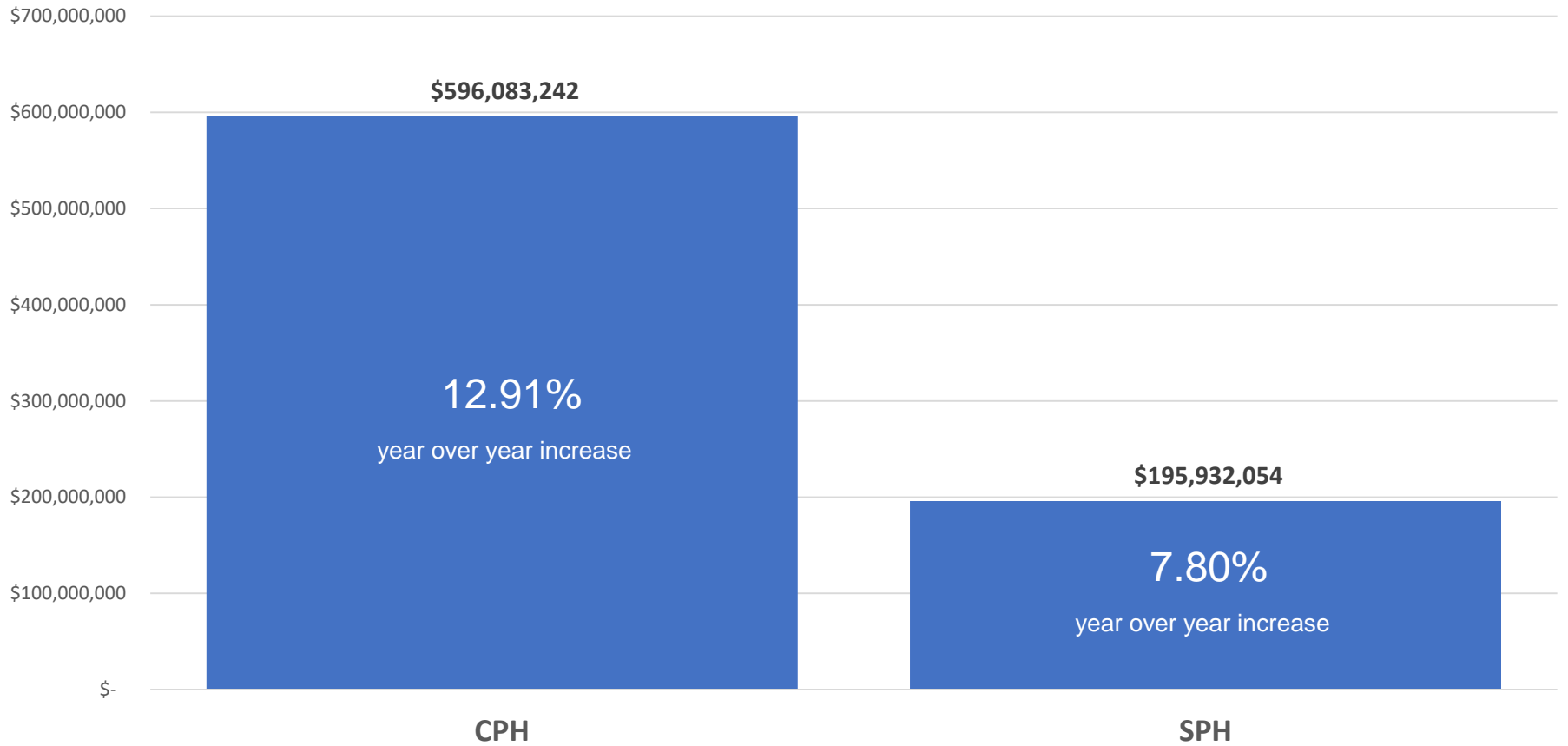
SPH Auxiliary



DIRECT REPORTS ▲ STAFF, RESOURCES & DEPARTMENTS ▲ COMMITTEES

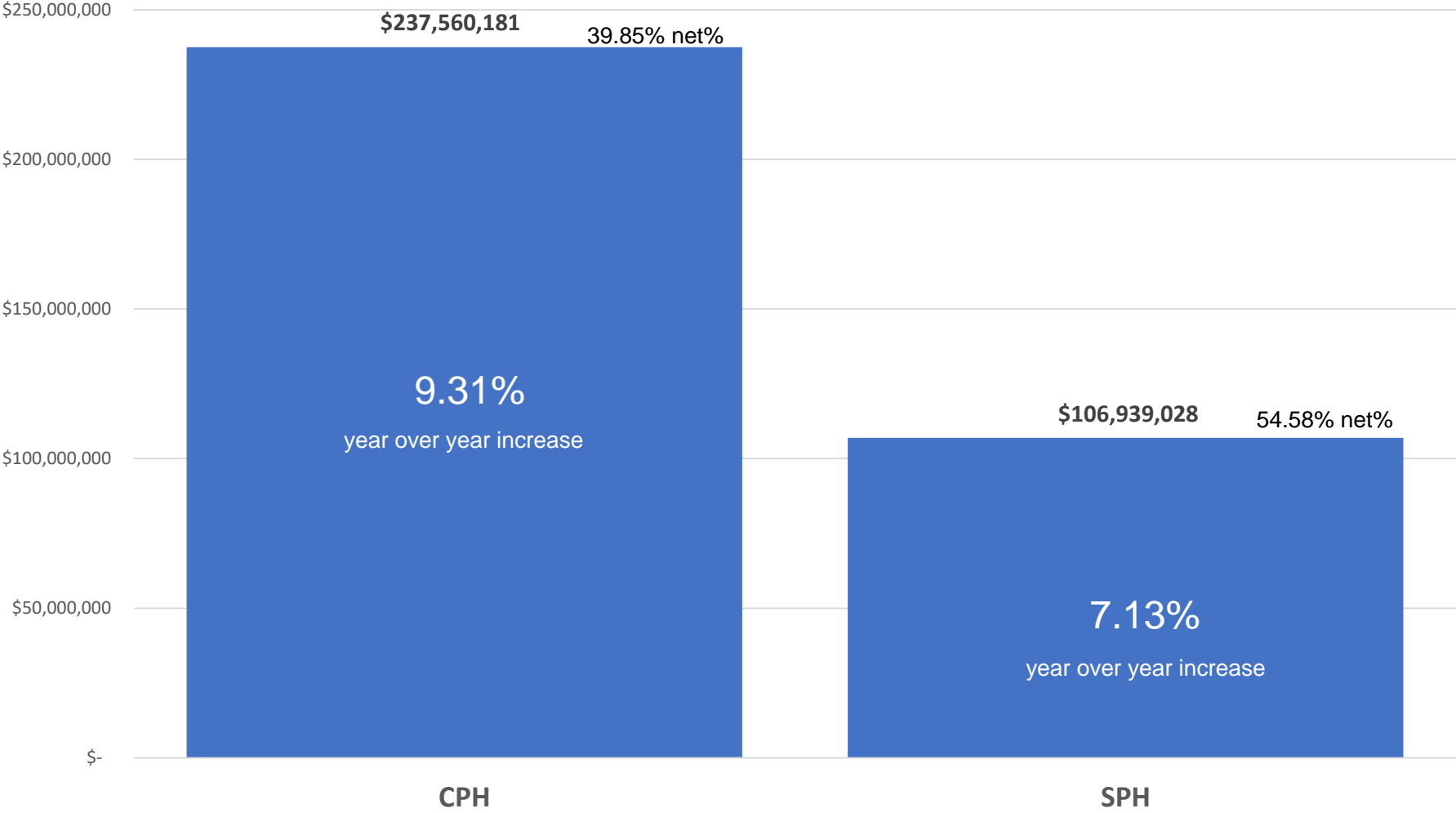
FY23 YTD Gross Patient Revenue

CPH – SPH Comparison



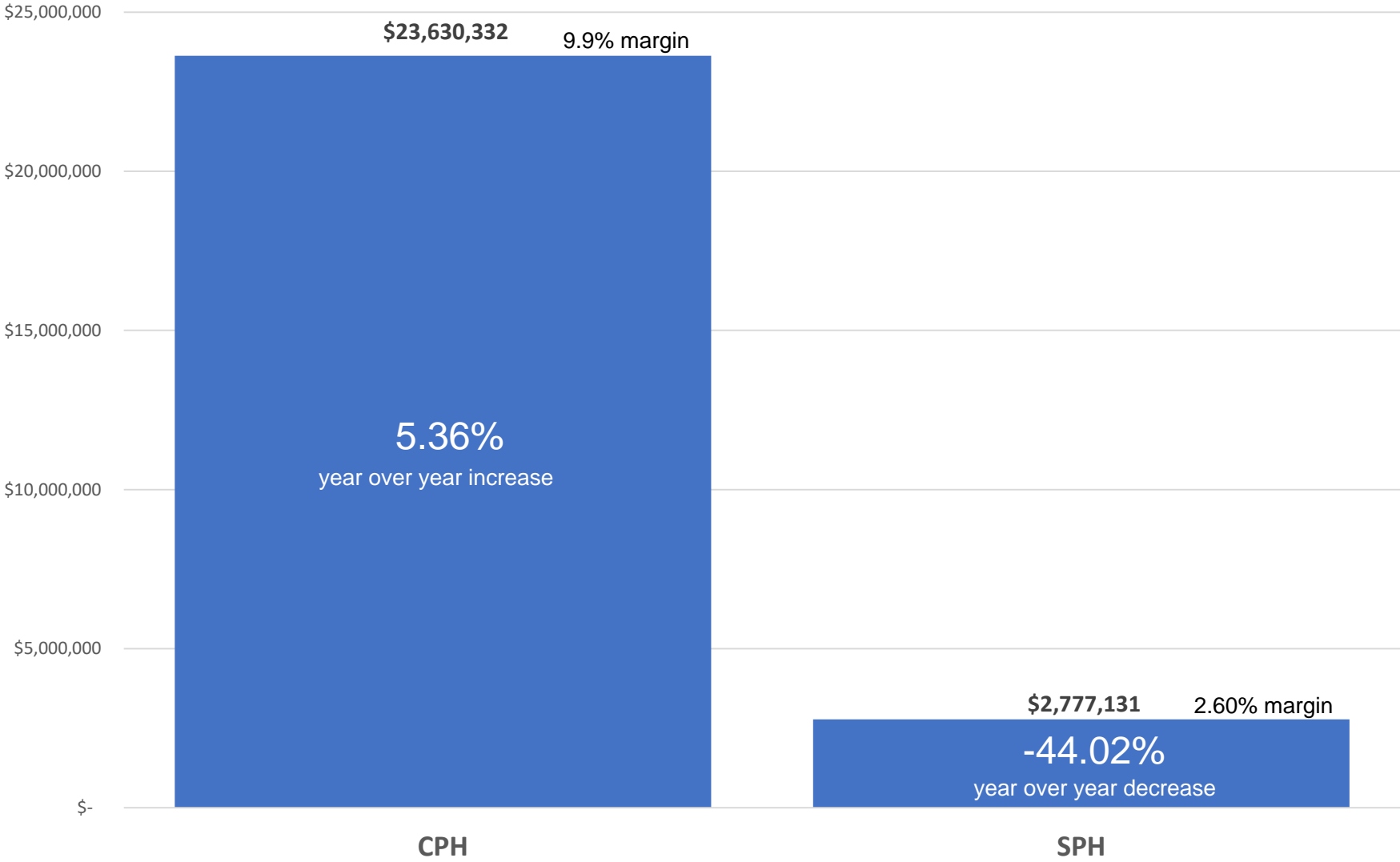
FY23 YTD Net Patient Revenue

CPH – SPH Comparison

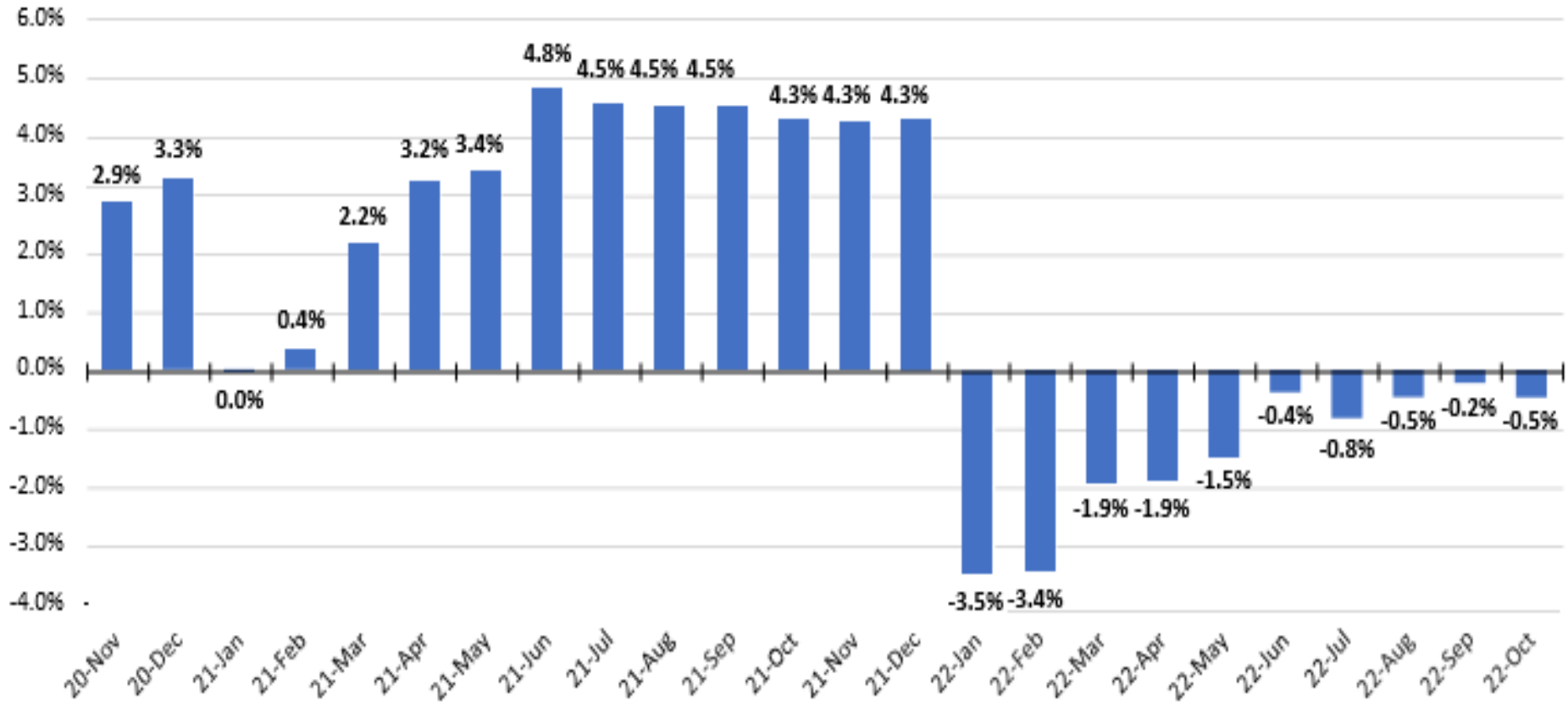


FY23 YTD Net Income

CPH – SPH Comparison



The core of the current hospital disarray: a broken relationship between revenue & expenses

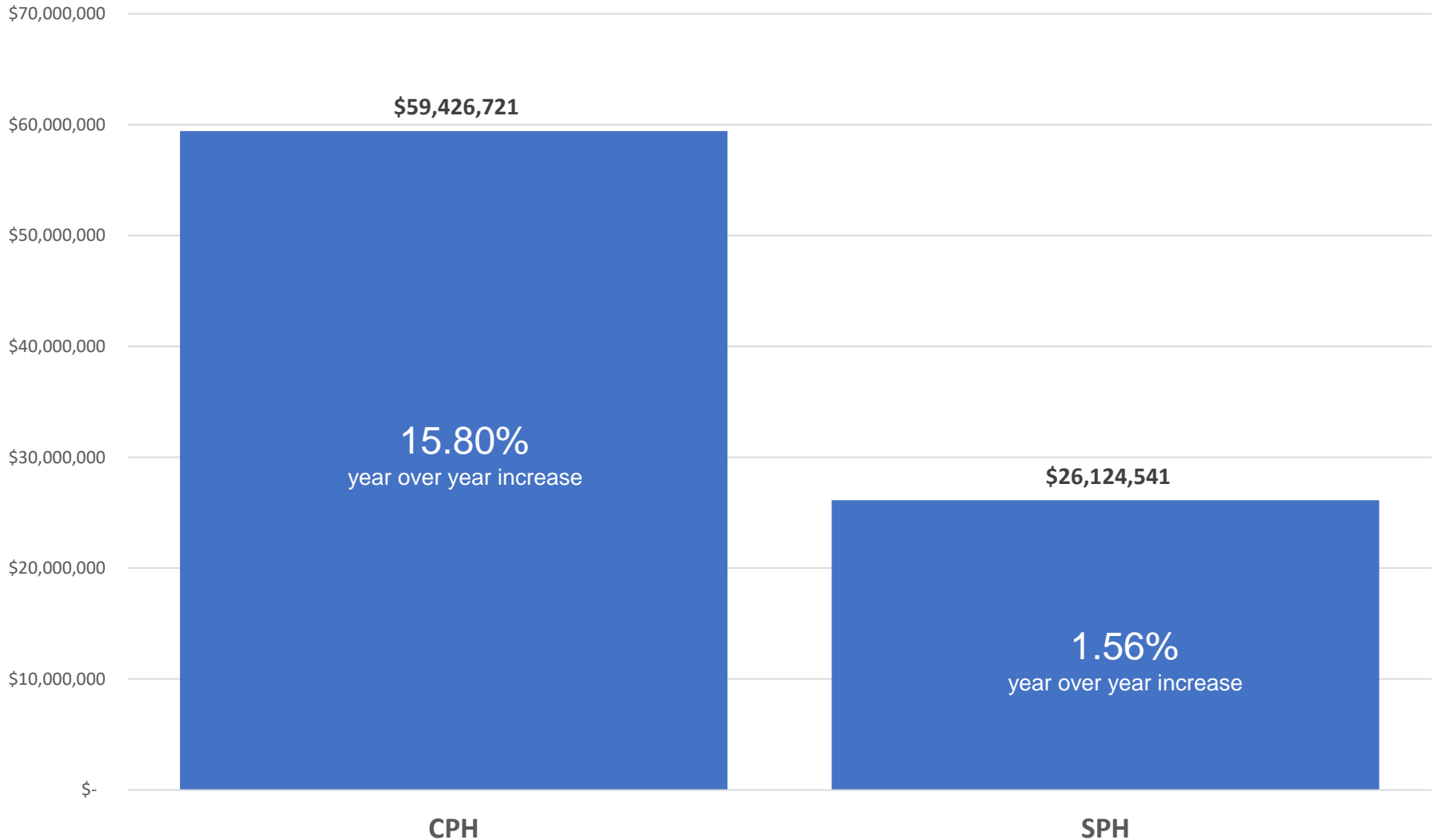


Hospital operating margins are down 31% compared with pre-pandemic levels.

* Note: The Kaufman Hall Hospital Operating Margin and Operating Margin Index is composed of the national median of our dataset adjusted for allocations to hospitals from corporate, physician, and other entities.

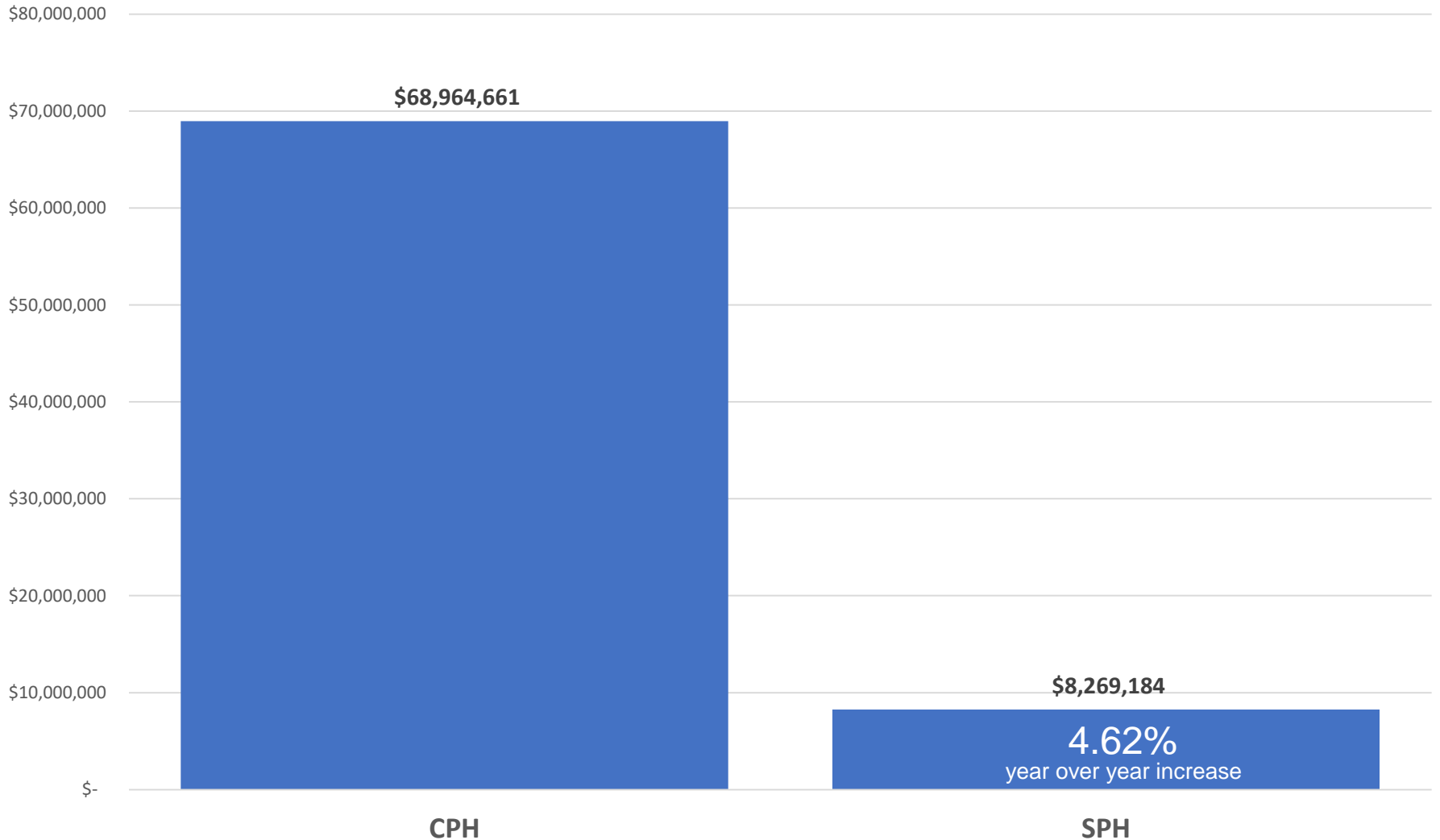
FY23 Cash & Cash Equivalents

CPH – SPH Comparison



FY23 Plant Replacement & Expansion Fund

CPH – SPH Comparison



Major Projects in Progress

Project Name	Status
1985 Hospital Roof Repairs	<i>KPB: Completed</i>
203 W. Pioneer Roof Repair	<i>KPB: In Progress</i>
LTC HVAC System	<i>KPB: RFP awarded, Project not started</i>
Generator Upgrades	<i>SPH: RFP awarded, Project begins Nov.</i>
Nuclear Medicine / Pharmacy Upgrades / Infusion Co-location	<i>SPH: Certificate of Need submitted 7/21</i>
Infrastructure Repair/Replacement Design	<i>KPB: RFP Scope under review</i>



Legislative Priority Projects

Emergency Power Plant Relocation and Improvement	\$4.5M
HVAC Improvements Hospital wide	\$2.5M
Parking and Patient Access Improvements	\$2.5M

**August 1st Clarion Article – Lisa Murkowski identified \$5M for South Peninsula Hospital Renovations has been voted out of Senate Appropriations Committee.*



Capital / Program Grant Projects

Grant Program	Description of Grant Request
Community Innovation \$1.3M (SOA – CCPO) – AWARDED	<i>Licensed Childcare Facility Amount TBD</i>
A. 203 W. Pioneer Ave B. 4201 Bartlett St. 1 st Floor	<i>Owned Space Renovation Lease Space Renovation</i>
C. 4300 Bartlett St. 1 st Floor D. 4014 Lake St. 1 st Floor	<i>Owned Space Renovation Lease Space Renovation</i>



Welcome to SPH!



Hans Amen, DO – Homer Medical Center, Family Medicine

Dr. Amen mostly grew up in Idaho and went to college at Idaho State University before attending medical school at North Texas Health Science Center. Most importantly...



Ragina Lancaster, DO – Homer Medical Center, Family Medicine

Ragina Lancaster, DO, is board certified in Family Medicine and OMT.

She is particularly interested in geriatric medicine and chronic pain management, but excited to care across all age groups and conditions.

Dr. Lancaster moved to Homer in 2023 with her husband, Jeremiah, and two children, Aubrey and James, and a German shepherd dog. Jeremiah and Ragina enjoy hiking, camping, tide pooling, and being on the water, and the fishing and hunting opportunities Alaska offers.



Welcome to SPH!



Pam Williams, DO South Peninsula Obstetrics and Gynecology

Pam joins SPH from Anchorage where she was a Hospitalist at Prov.

She is in Homer 10d a month and is working to transition here permanently.



Susan Jackson, FNP – General Surgery

Susan joined the General Surgery team in June from Denver. She has been living in Homer with her husband for over a year working remotely and building a home.

She worked in internal medicine ICU and geriatrics before spending the next 18yrs in the Surgery department.

Susan always enjoyed nursing both as an RN and FNP as it gives her a chance to meet interesting people and assist them with what they are going through.



Christine Pratt, PA – Family Care Clinic

Not a new face to us, but a new location! Christine has transitioned back to family medicine, her passion. The Family Care Clinic is so happy to have her.



Welcome to SPH!



Jaclyn Housley, FNP –Peak Neurology, Sleep Medicine

Jaclyn is a board-certified Family Nurse Practitioner who received her master's degree from Spring Arbor University, Michigan. She has held an interest in promoting healthy sleep, diet, and exercise in the community as a provider.



Jimin Hwang, APRN, ANP–Peak Neurology, Sleep Medicine

Jimin (pronounced Gee-min) is a transplant to Alaska from Seoul, Korea. She is a board-certified Family Nurse Practitioner who received her master's degree from the University of Alaska Anchorage. She quickly grew her interest in sleep medicine, an essential component of health promotion.



Chris Kowalski, MD – Specialty Clinic, ENT

Dr. Kowalski earned his medical degree from the University of Iowa College of Medicine in 2013 after graduating with honors from the University of Wisconsin. He completed his residency in Otolaryngology – Head & Neck Surgery at the University of Iowa in Iowa City, Iowa, in 2018. Dr. Kowalski is trained and practices in all aspects of otolaryngology including sinus surgery, otologic surgery, and pediatric otolaryngology for our patients from Anchorage, Wasilla, Palmer, and surrounding areas.

Currently practicing for ACCENT in Anchorage and will be at SPH in clinic and surgery.

Welcome to SPH! – *signed letters of intent*



Ian Wisecarver M.D. – Integrated Plastic Surgery

Hometown: New Orleans

Undergraduate: Louisiana State University

Medical School: Louisiana State University

Residency: UT Southwestern Medical Center (Integrated Plastic Surgery)



Jenna Aird, M.D. – Dermatology

Hometown: Homer, Alaska

Medical school: Creighton Medical School, Omaha, Nebraska



Gregory Aird, M.D. – Radiology

Hometown: Lake Forest, CA

Medical school: Creighton University School of Medicine

About me: I enjoy reading, cycling, hiking, and cooking with my wife. I also enjoy reading and writing poetry, birdwatching, and gardening.



Community Connection

Homer Steps Challenge – over 700 individuals participated on 70 teams. →

Awareness in Action – Community education on staying safe in social settings



2023 Community Health Needs Assessment completed with MAPP Health Coalition

← Cuddlecot Donation to the Family Birthing Center



Congratulations!



Front Line Outstanding Performance Award
SPH Long Term Care C.N.A. program

Paton Award (40+ years of medical service)
Paul Eneboe, MD

Celebrating Nurses Awards 2023
Providence Alaska and Alaska
Hospital & Healthcare Association
Kim Greer, RN

Medicare Compare 5 Star Rating
SPH Long Term Care

