



CPGH, Inc. Quarterly Report

Prepared for

The Kenai Peninsula Borough
Assembly and Administration

May 7, 2019



- Presentation Items

- Finance Report (Unaudited-Draft)

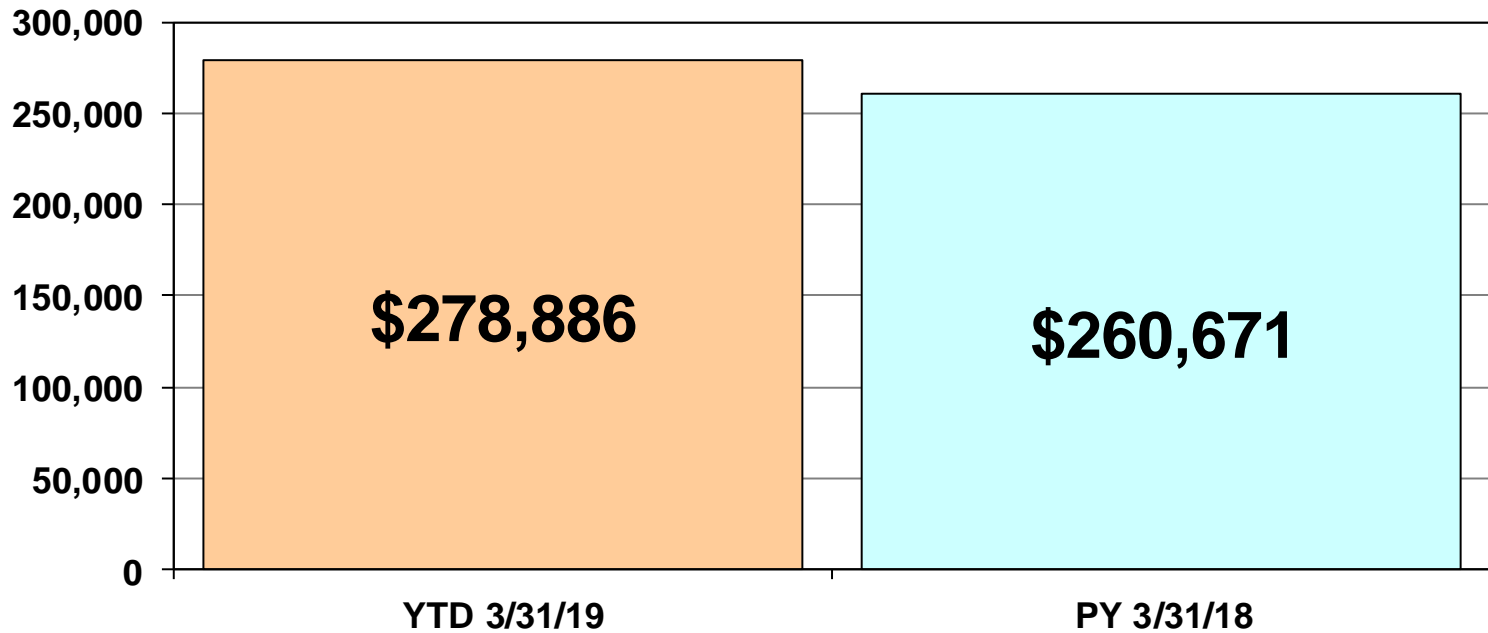
- CPH Provider Update

- What happens to all those PREF \$s?



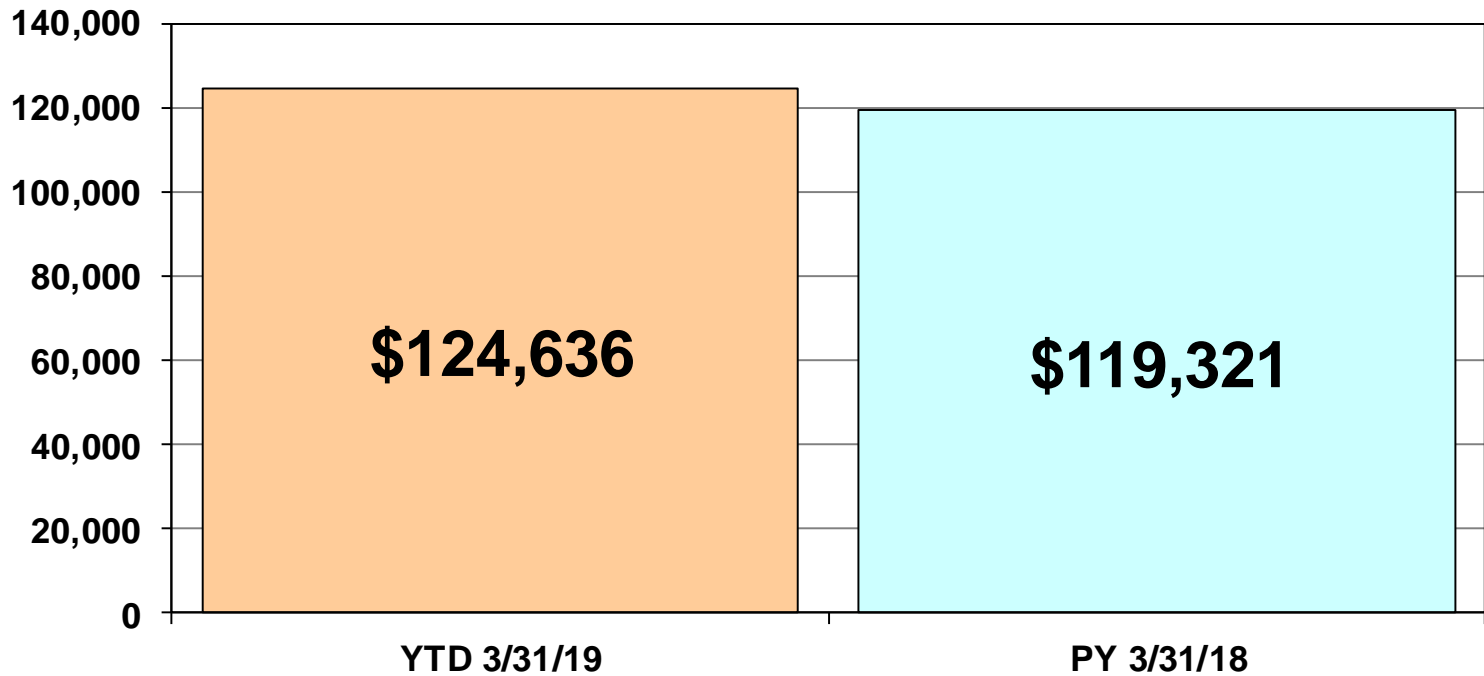
Gross Patient Revenue – FY2019 (Est.)

(in thousands)



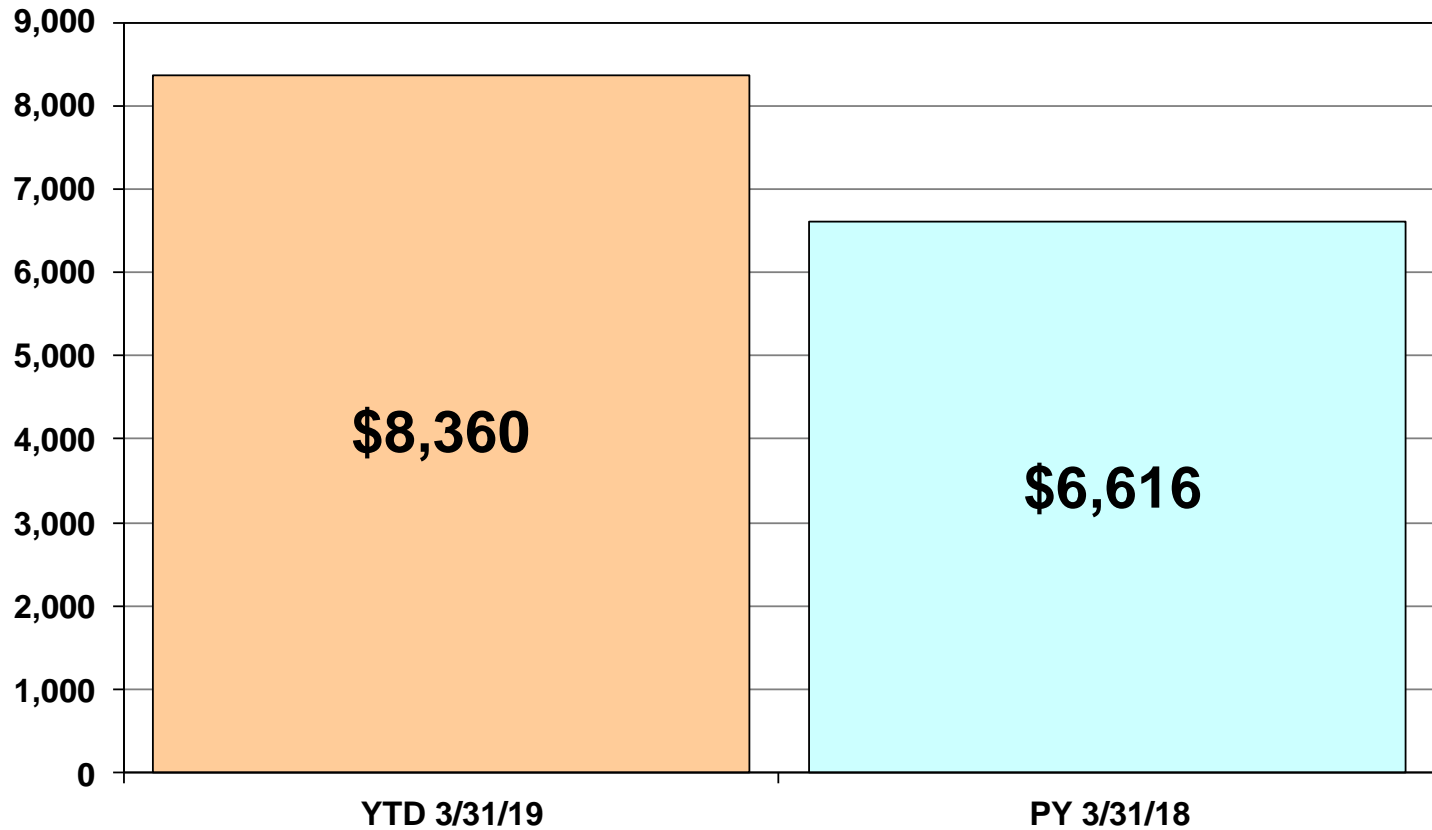
Net Patient Revenue – FY2019 (Est.)

(in thousands)



Net Income – FY2019 (Est.)

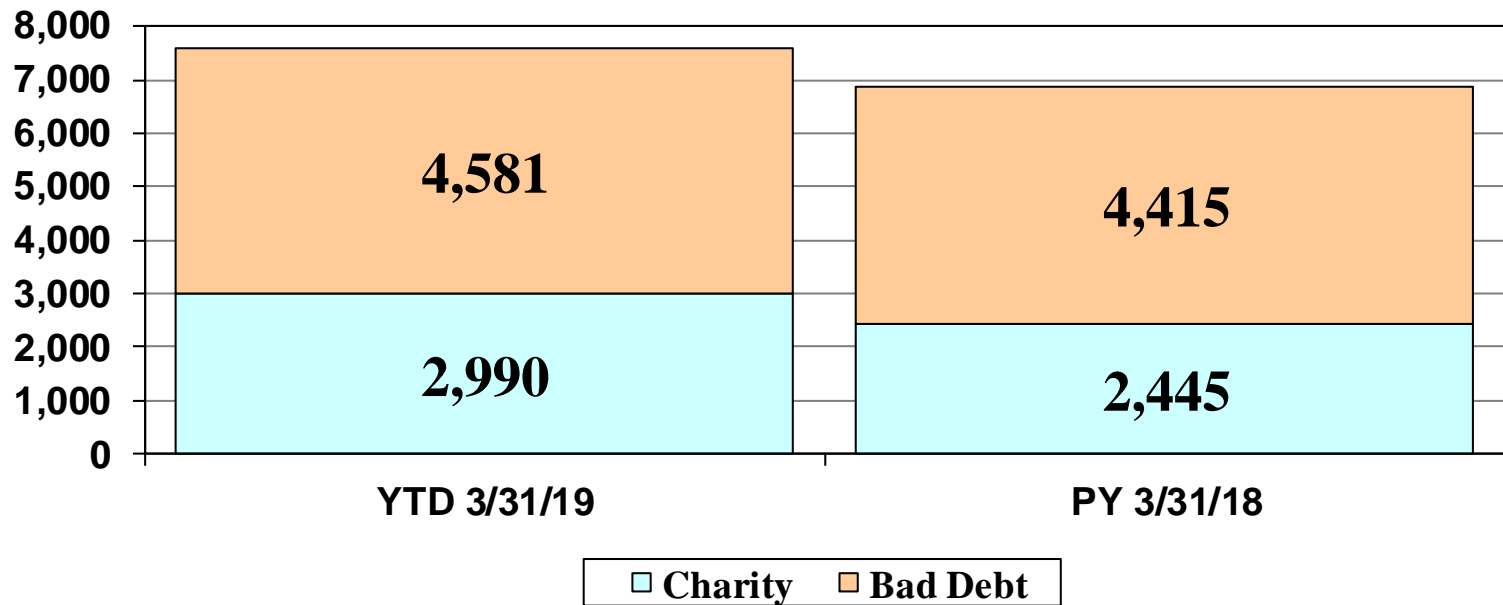
(in thousands)



Charity Care & Bad Debt

FY2019

(in thousands)

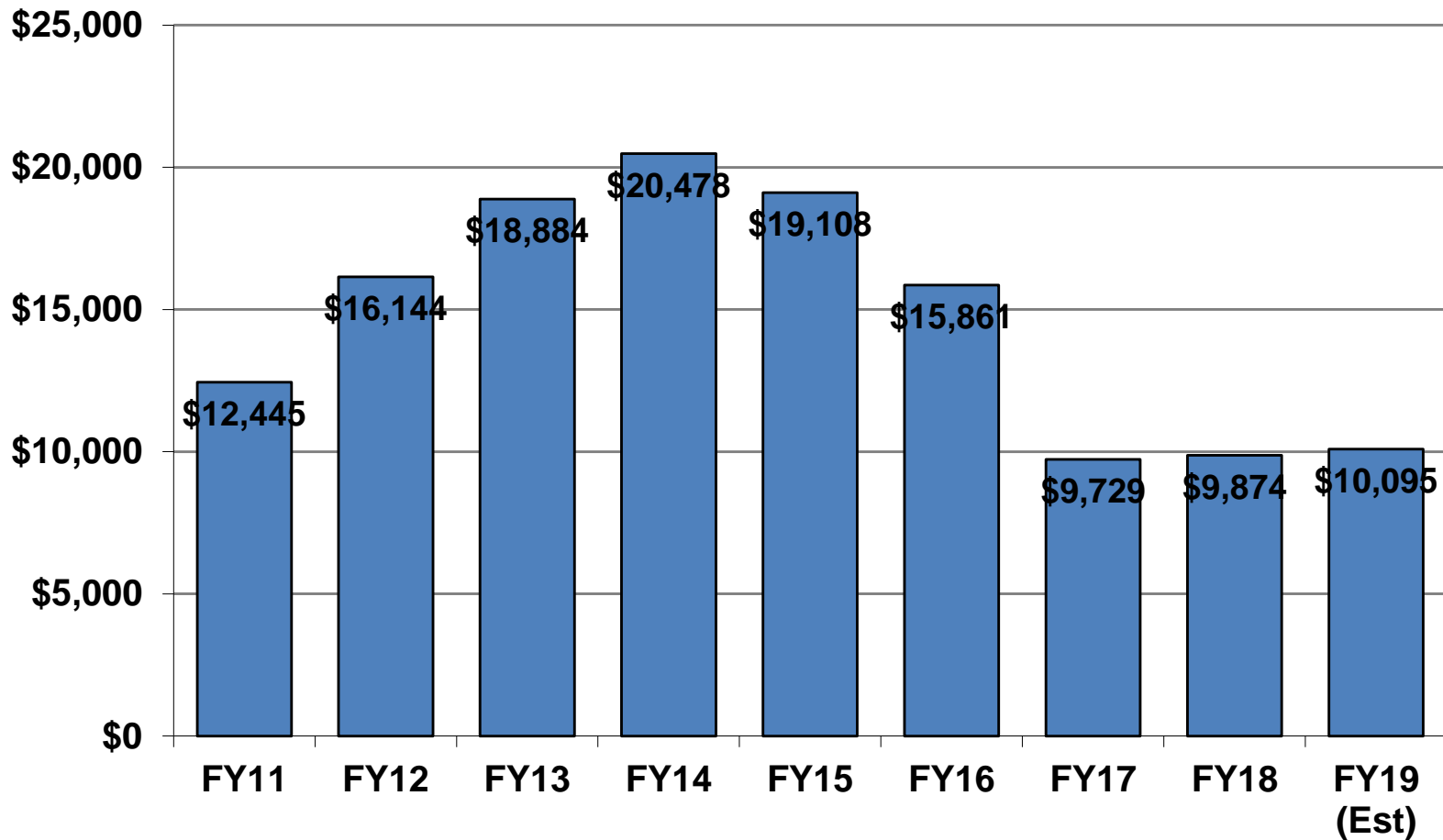


Community Benefit



Uncompensated Care Trend

(Charity & Bad Debt, in thousands)



Charity Care & Bad Debt FY 2019

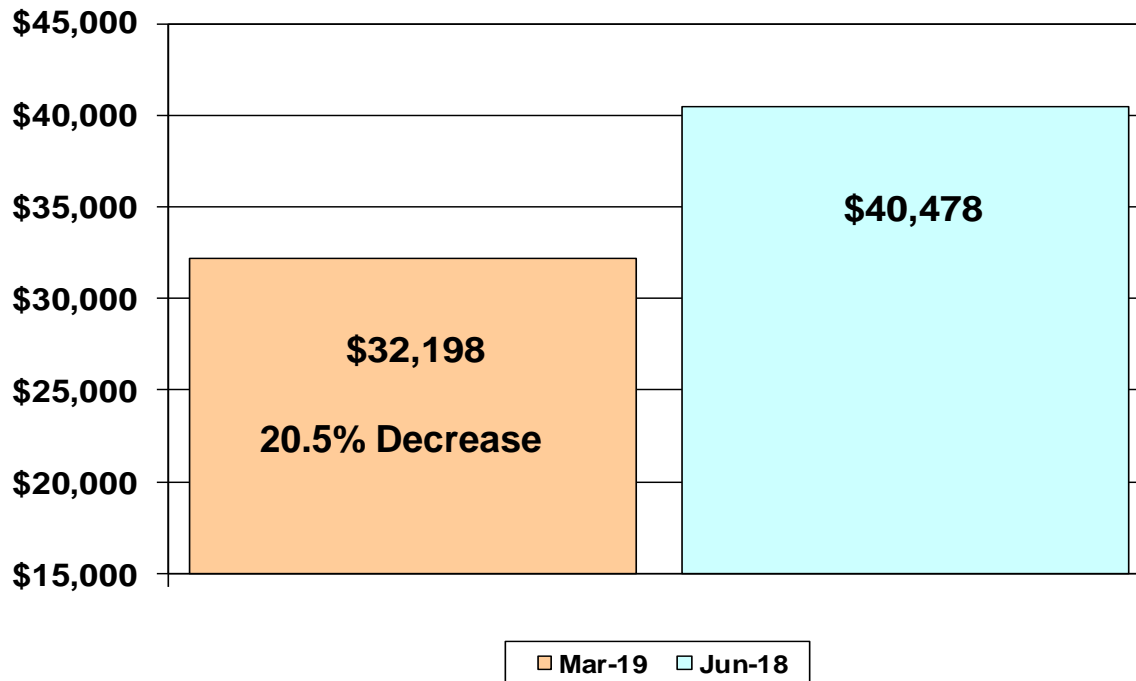
- \$7.6 Million in uncompensated care provided to community members YTD.
- Financial Assistance Program Brochure available at the following website
 - <http://www.cpgh.org/workfiles/CPH%20FinancialAssistBrochure-12-10lr.pdf>



Cash & Cash Equivalents

FY2019

(in thousands)



Total of \$23.6M transferred out of Operating beyond normal business through 3/31/19. This includes:

- \$3.5M in 2011 Refunding Bond Payments (paid from Plant Replacement Fund)
- \$4.5M in 2014/15/16 Series Bond/Escrow Payments
- \$15.6M in Cash Transfers to Plant Replacement



Transfers to Plant Replacement & Expansion Fund

- PREF Acct. Balance at 3/31/2019 – \$40,651,755
- Days Operating Cash on Hand at 3/31/2019 – 81.73 days (estimate only—unaudited)
- Amount transferred as of 3/31/2019 – \$15,600,862
- No transfers pending



Central Peninsula Surgical Associates



Dr. David King – Joins CPH Surgical Associates
(Begins June 1st)

Dr. Greg Hough – Joins CPH Surgical Associates
(Begins September 1st)



Central Peninsula Bone & Joint



Dr. Michael Reyes – Departing August 1st
Fellowship Trained in Joint Replacement

Dr. Mark Hammerberg Begins September 1st
Fellowship Trained in Joint Replacement and Trauma



da Vinci Xi[®] Surgical System



On Display at Health Fair 3/23/19
Community Members Tested Their Skills!

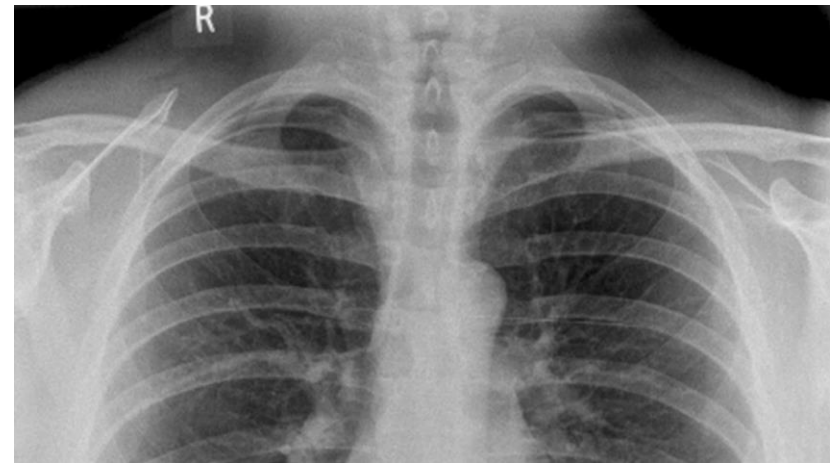
Over 60 Cases Completed Using Robot
By Dr. Lattin and Dr. King





PHASE IV

Radiology Remodel / Expansion



Radiology Waiting Room / Reception Desk



© Ken Graham Photography.com

CPH Phase IV – Radiology Expansion



Fluoroscopy



© Ken Graham Photography.com

CPH Phase IV – Radiology Expansion



Spec CT



CPH Phase IV – Radiology Expansion



CT Scan



© Ken Graham Photography.com

CPH Phase IV – Radiology Expansion



MRI



CPH Phase IV – Radiology Expansion





PHASE V

River Tower



Hip Joint Replacement



Knee Joint Replacement



Main Entrance – Radiation Oncology



CPH Phase V – River Tower



State-of-the-Art Technology. State-of-the-Heart Care.



River Tower Lobby



CPH Phase V – River Tower



Linear Accelerator



CPH Phase V – River Tower





CPH Phase V – River Tower



MRI



CPH Phase V – River Tower



Oncology / Infusion Center



CPH Phase V – River Tower

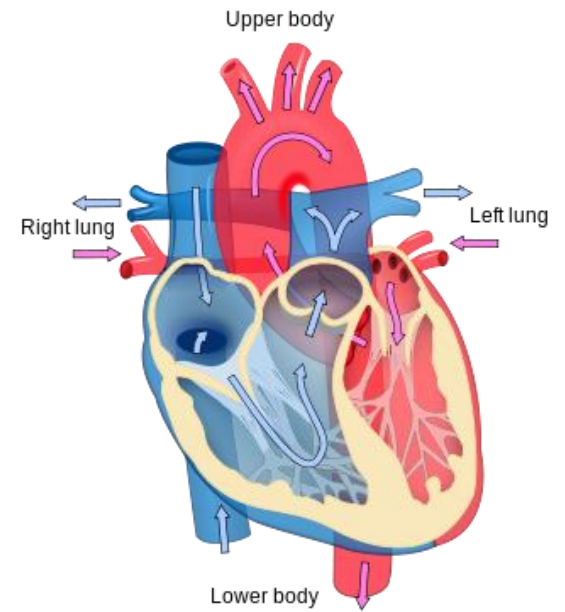


Endoscopy Suites



CPH Phase V – River Tower





PHASE VI

OB / Cath Lab Project





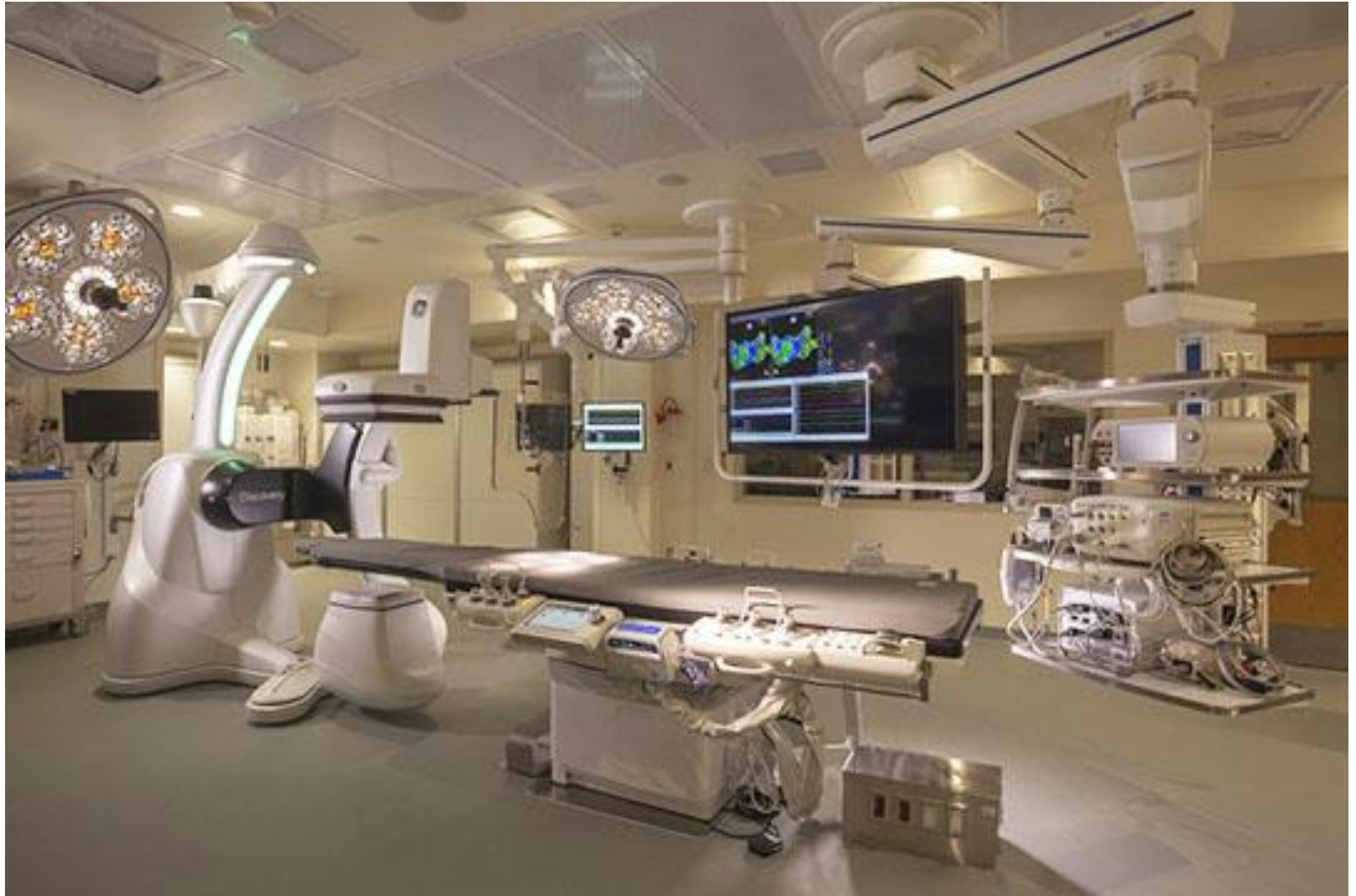
PHASE VI OB / CATH LAB PROJECT



State-of-the-Art Technology. State-of-the-Heart Care.

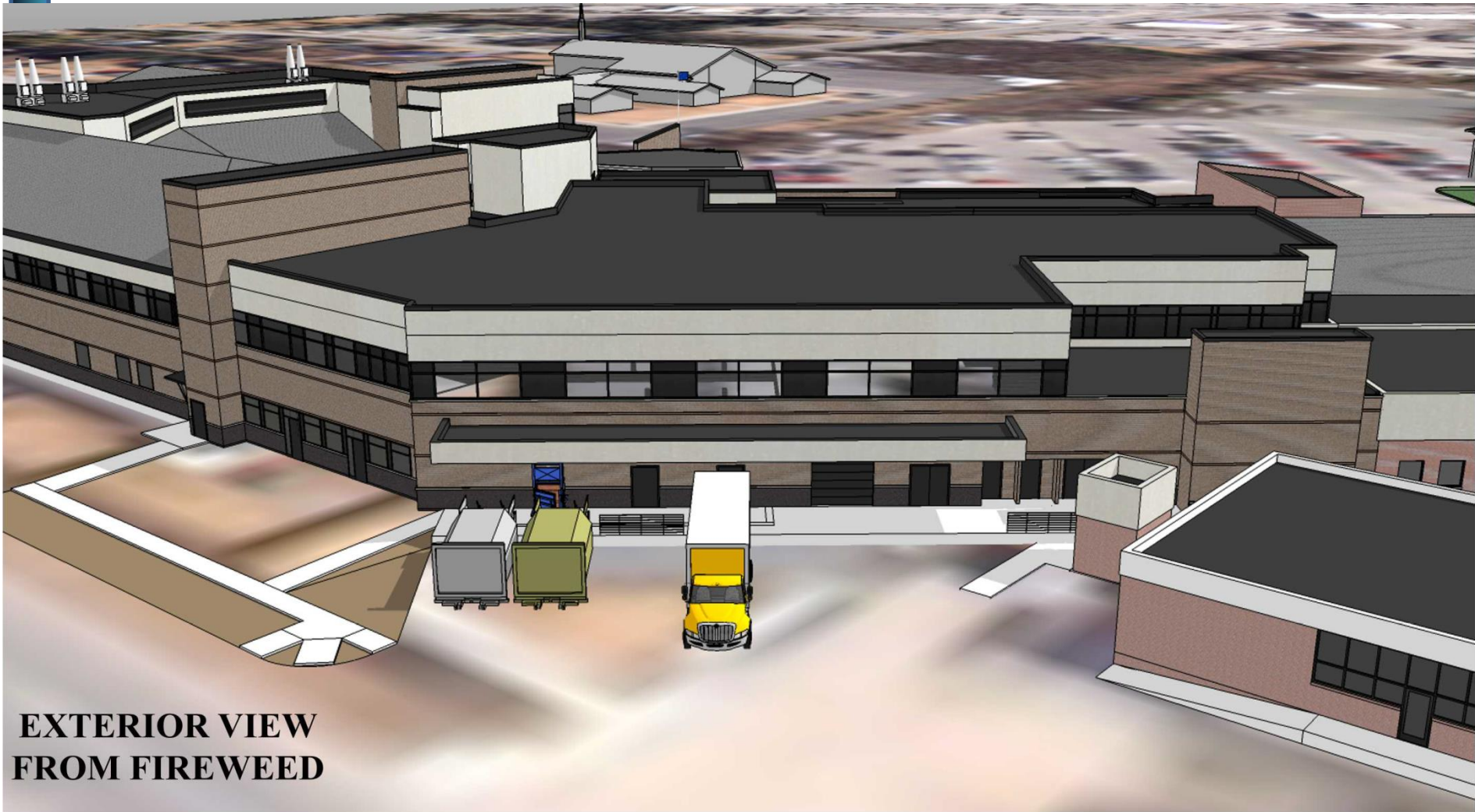


Cath Lab (example)



PHASE VI OB / CATH LAB PROJECT





**EXTERIOR VIEW
FROM FIREWEED**



PHASE VI OB / CATH LAB PROJECT

State-of-the-Art Technology. State-of-the-Heart Care.



- Thank you Assembly Members

QUESTIONS?

