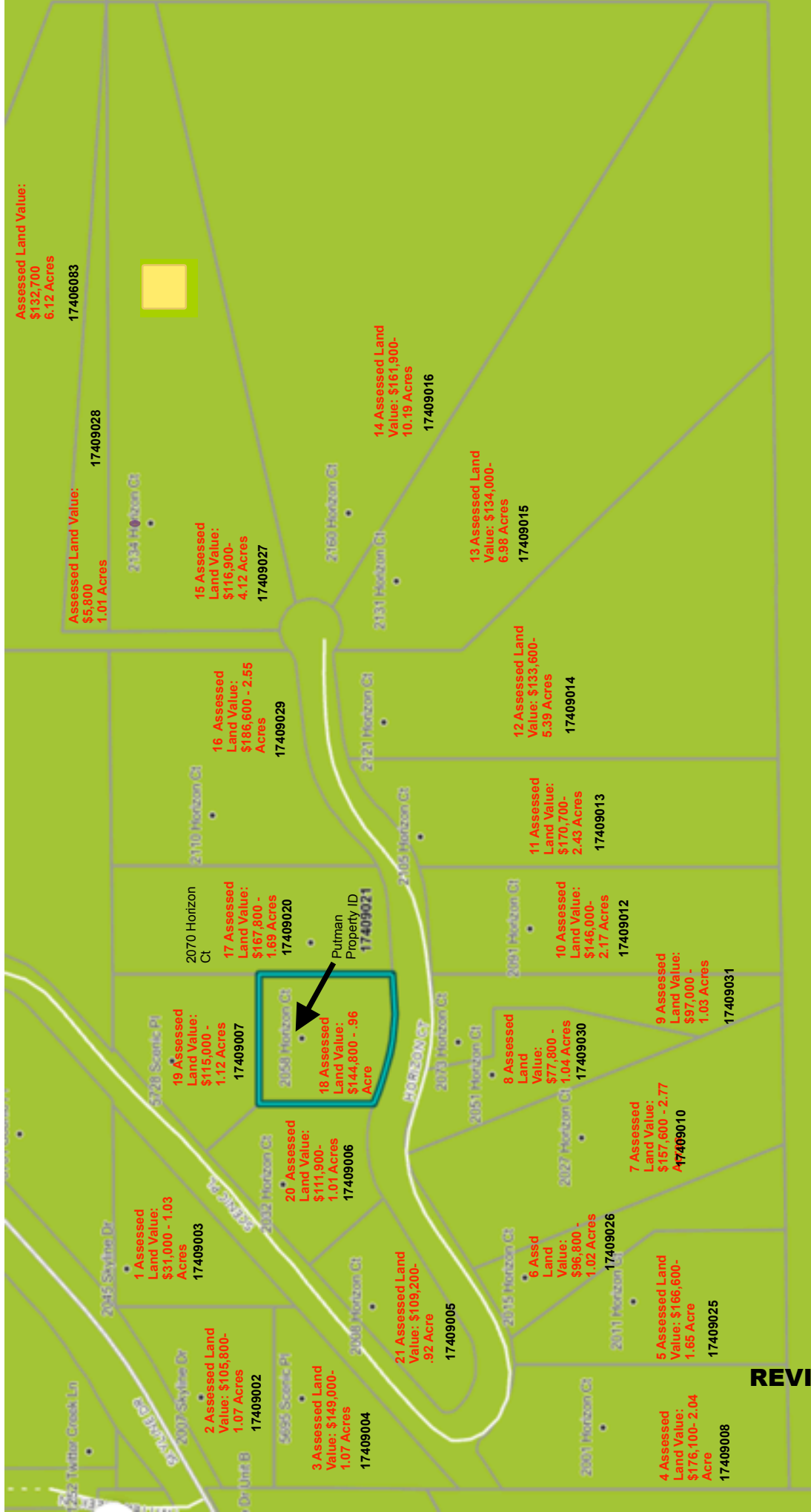


Horizon Court Land Values

Note: Numbers 1-21 were assigned to lots in order to reference the chart below's information



**Neighborhood Land Valuations per Acre
(cents are rounded down to nearest \$1)**

1	\$30,097		17409003
2	\$98,878		17409002
3	\$139,252		17409004
4	\$86,323		17409008
5	\$100,969		17409025
6	\$94,901		17409026
7	\$56,895		17409010
8	\$74,807		17409030
9	\$94,174		17409031
10	\$67,281		17409012
11	\$70,246		17409013
12	\$24,786		17409014
13	\$19,197		17409015
14	\$15,888		17409016
15	\$28,373		17409027
16	\$73,176		17409029
17	\$99,289	Lot on E border of 18	17409020
18	\$150,833	Highest \$ per acre on Horizon Ct/Scenic Pl	17409021
19	\$102,678	Lot on N border of 18	17409007
20	\$110,792	Lot on W border of 18	17409006
21	\$118,695		17409005