

*Leadership to
Foster, Enhance and
Promote Economic
Development*

KPEDD Project Update

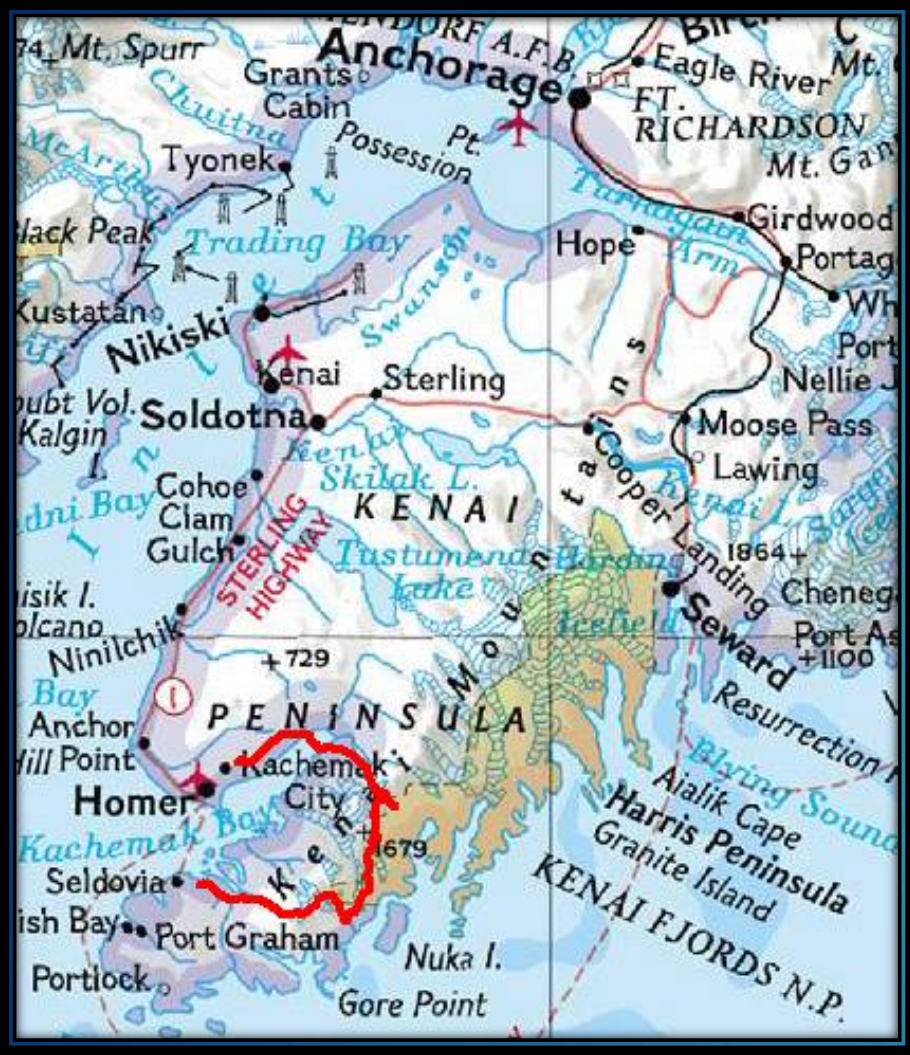
TIM DILLON, EXECUTIVE DIRECTOR

WWW.KPEDD.ORG

907-283-3335

Who We Are

- 501 (C) 4 Regional Economic Development Organization
- Independent 13 Seat Diverse Regional Board of Directors
- Current Contracts Include EDA, Denali Commission, Manufacturing Extension Program & Kenai Peninsula Borough
- Partnerships With Federal, State & Local Communities





Kenai Peninsula Borough Comprehensive Economic Development Strategy 2019



Kenai Peninsula Economic
Development District



In Partnership with the University of
Alaska Center for Economic Development



Regional Partnerships

- Build ties to industry associations and communities
- Coordinate region-wide economic development with communities

Infrastructure and Technology

- Industry focused infrastructure
- Transportation infrastructure
- Expanded broadband access

Workforce and Human Capital

- Industry partnerships and voc-tech
- Workforce attraction and retention

Business Climate and Entrepreneurship

- Strengthen existing businesses through business retention and expansion
- Promote responsible development
- Develop entrepreneurial ecosystem

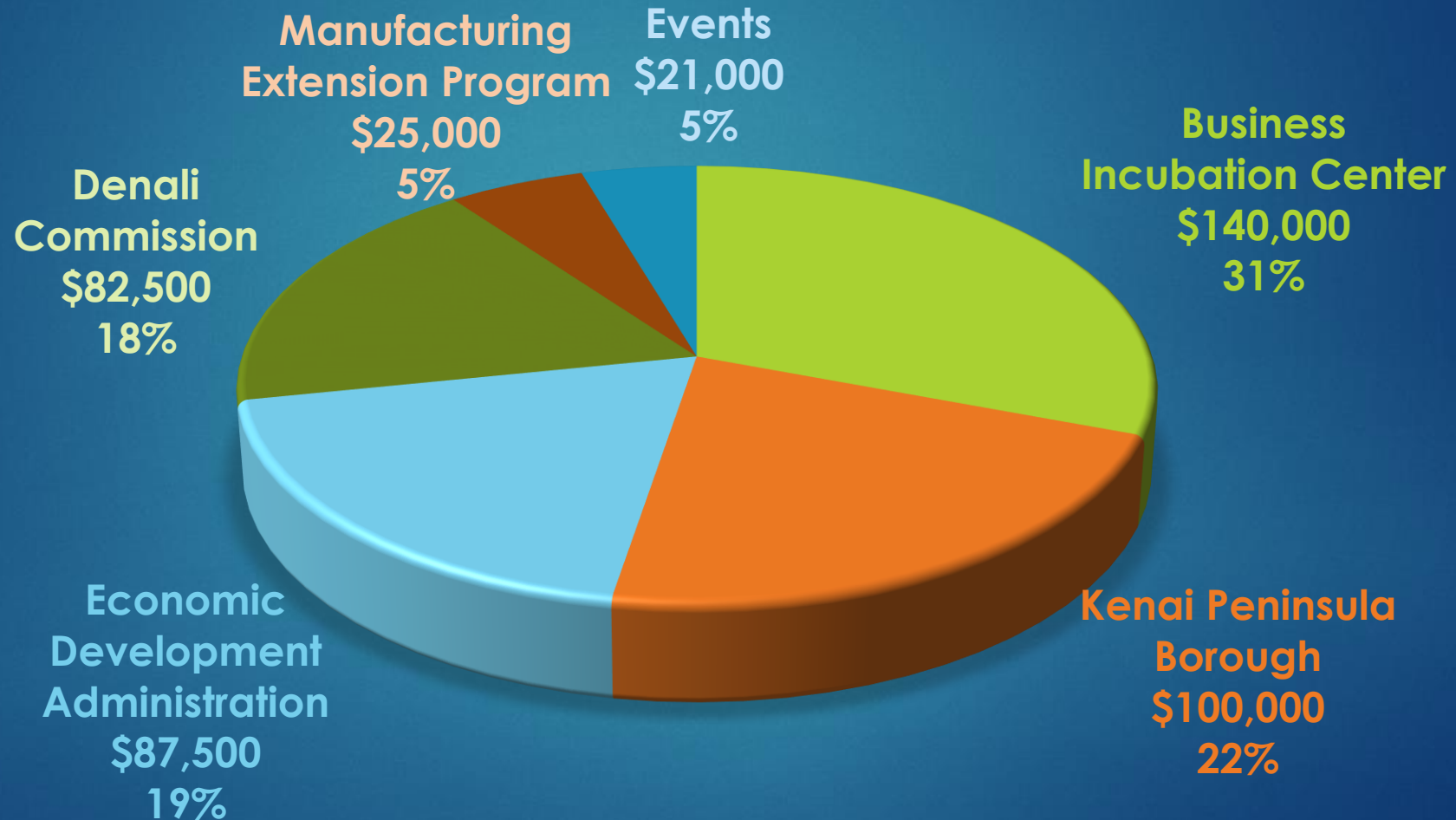
Quality of Place

- Develop Kenai Peninsula "brand" for residents, visitors, and businesses
- Promote expansion of recreational amenities and public access

Knowledge Creation and Dissemination

- Track and report economic and demographic trends
- Seek new venues to publicize findings

FY 2021 Funding Sources





DENALI COMMISSION

PARTNERING TO DEVELOP ALASKA'S
BASIC INFRASTRUCTURE

Noatak

Photograph by Quantum Spatial

[HOME](#)

[ABOUT US ▾](#)

[STRATEGIC PLAN](#)

[WORK PLANS](#)

[PROGRAMS ▾](#)

[FUNDING REQUESTS](#)

[GRANTS](#)

[FINANCE ▾](#)

[CAREERS](#)

DENALI COMMISSION STORY

Introduced by Congress in 1998, the Denali Commission is an independent federal agency designed to provide critical utilities, infrastructure, and economic support throughout Alaska. With the creation of the Denali Commission, Congress acknowledged the need for increased inter-agency cooperation and focus on Alaska's remote communities.

Alaska Counts

2020 Census

A white outline map of the state of Alaska is positioned below the 'Alaska Counts' text. An orange graphic element, consisting of a horizontal line that turns downward into a V-shape, is placed over the map, with the '2020 Census' text positioned to its right.

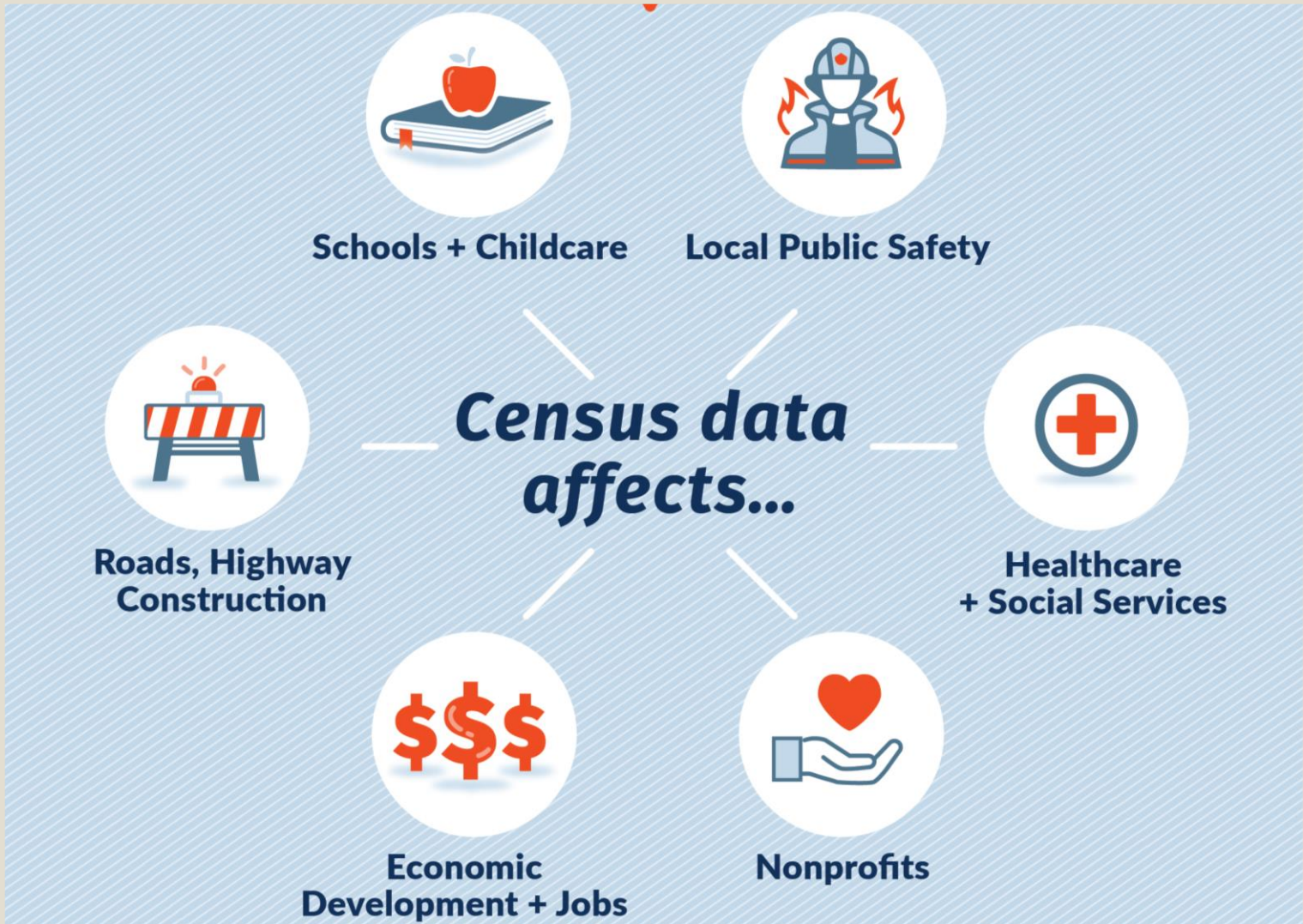
2020 U.S. Census:
Every Alaskan Counts

Alaska's 2010 census participation Rate: 65%

The lowest in the nation

In 2020, Alaska will again be one of the hardest states to count





- Federal spending comprises 21.8% of state GDP.
- Non-profits receive 18% of the \$3.2 billion in direct federal funding.

Share 5 Essential Messages:

Help people understand that the Census:



Is confidential

Legal protections prevent Census Bureau staff from sharing personal data with any other person or agency



Is important

The census affects every Alaska community by determining funding for everything from roads and airports to schools and health care



Is easy to complete

*10 questions +
10 minutes =
10 years of funding*

online, by mail or by phone.



4

Will invite you to respond March 2020

March mailing

April 1 Census Day

*If no response, census workers will follow up
with additional mail or in person.*

*People in more remote areas of the southern Kenai will
get hand-delivered census materials at their homes.*

**Census workers can disregard no trespassing
signs! (but will leave if asked)**



5

Asks simple questions

Number of people living at address

Name, gender, age, ethnicity of each

Do residents own or rent

Phone number (if follow up is needed)

No citizenship question!



Next Industry Outlook Forum

January 6th 2021 in
Kenai





*Leadership to
enhance, foster and
promote economic
development*

Tim Dillon
Executive Director
907-242-9709
Tim@KPEDD.org