

Cook Inlet Aquaculture Association

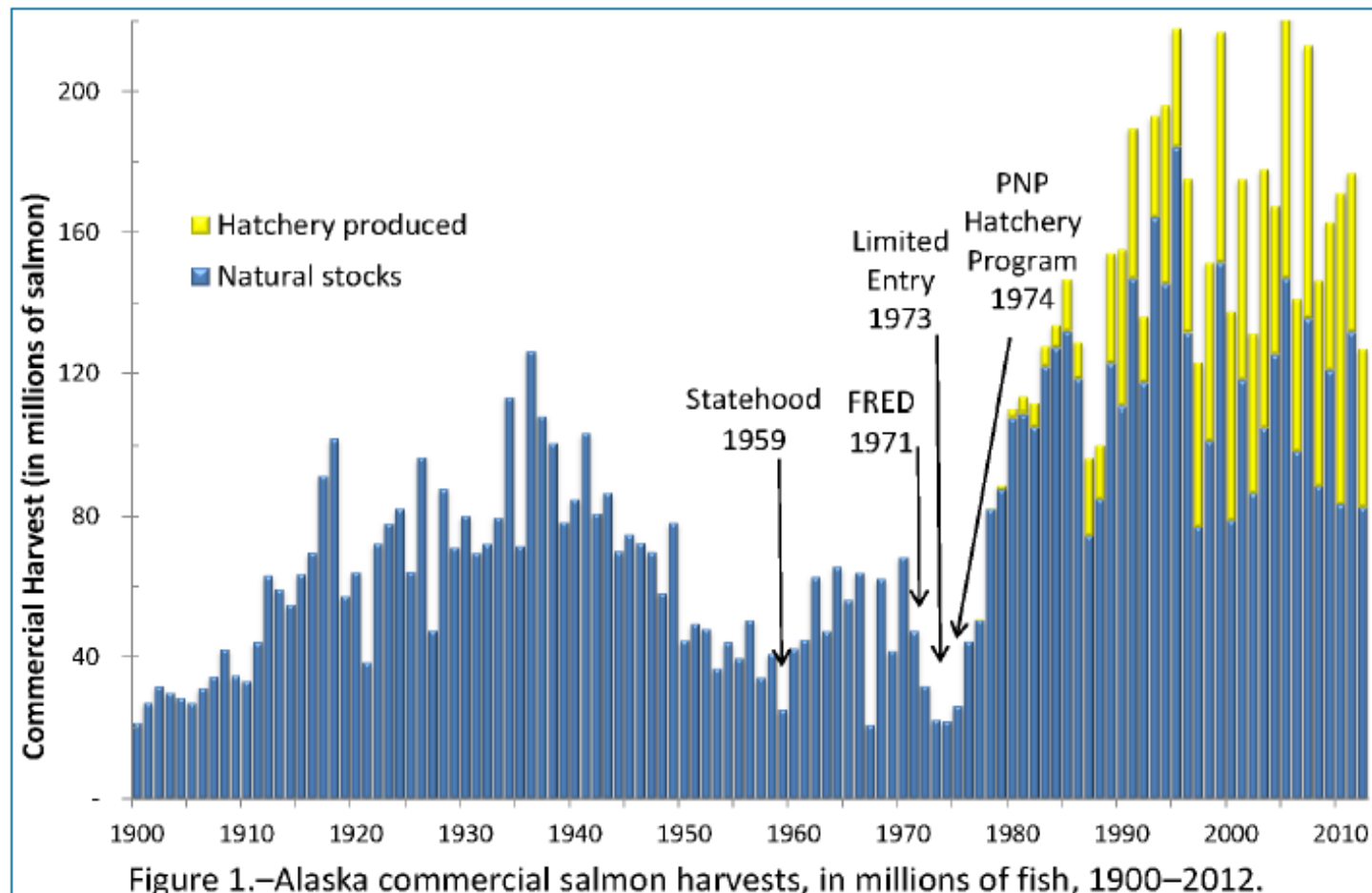
A non-profit 501(c)(3) corporation established
in 1976

Gary Fandrei, Executive Director



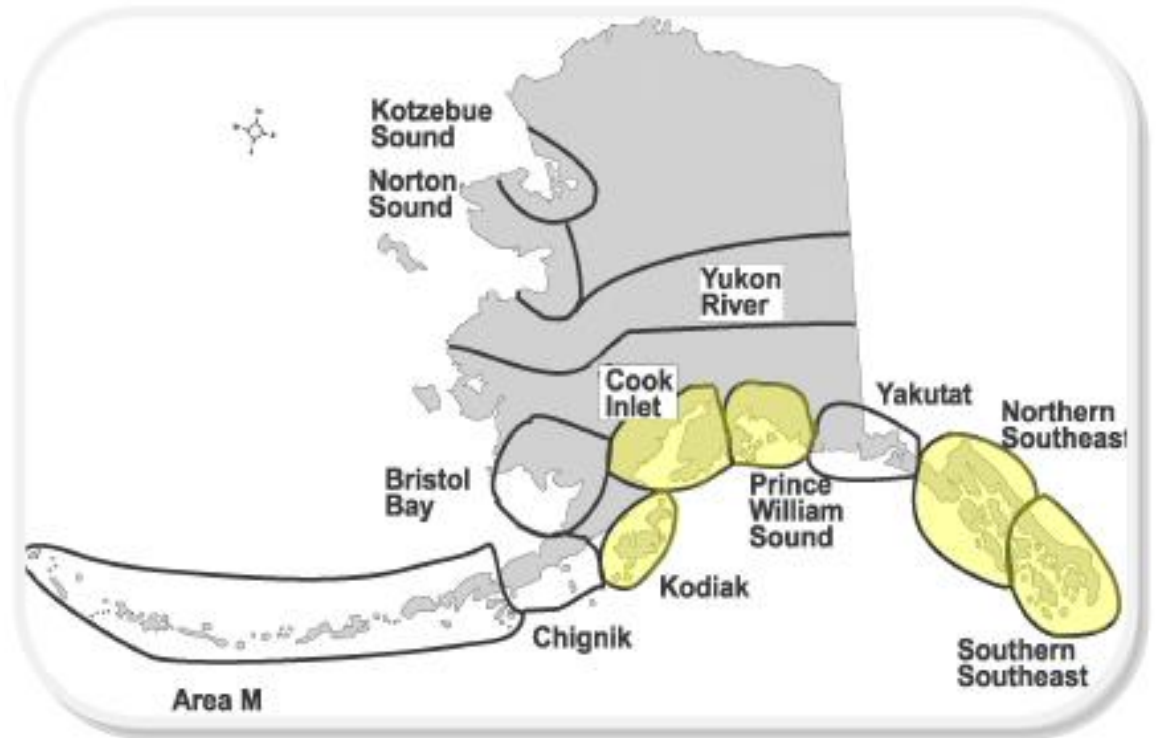
Alaska's Salmon Enhancement

- Produces salmon for common property fisheries and creates economic opportunity
- Reduces pressure on wild salmon stocks



Government and Private Efforts to Rebuild Salmon Stocks

- 5 regional aquaculture associations with active hatchery operations
- Approximately 29 PNP hatcheries



CIAA Funding

Primarily funded by:

- 2% salmon enhancement tax
- Cost recovery licensing
- Contract fish production
- Grants



CIAA facilities and projects

- Rehabilitate depressed populations
- Take advantage of unused rearing habitat
- Produce more salmon for people
- Take pressure off wild stocks of salmon



Trail Lakes Hatchery

- Hatchery leased from State of Alaska
- 4 full-time staff
- 9-12 MM sockeye and .5 MM coho annually
- Annual budget \$1.3 MM +



Tutka Bay Lagoon Hatchery



- Hatchery leased from State of Alaska
- 3 full-time staff
- 125 MM pink salmon annually
- Annual budget \$1.5 MM +



Port Graham Hatchery

- **CIAA owned**
- **3 full-time staff**
- **84 MM pink salmon annually**
- **Annual budget \$1.1 MM +**



Annual Production Cycle

- Enumeration and gamete collection
- Fertilization
- Incubation
- Rearing
- Release

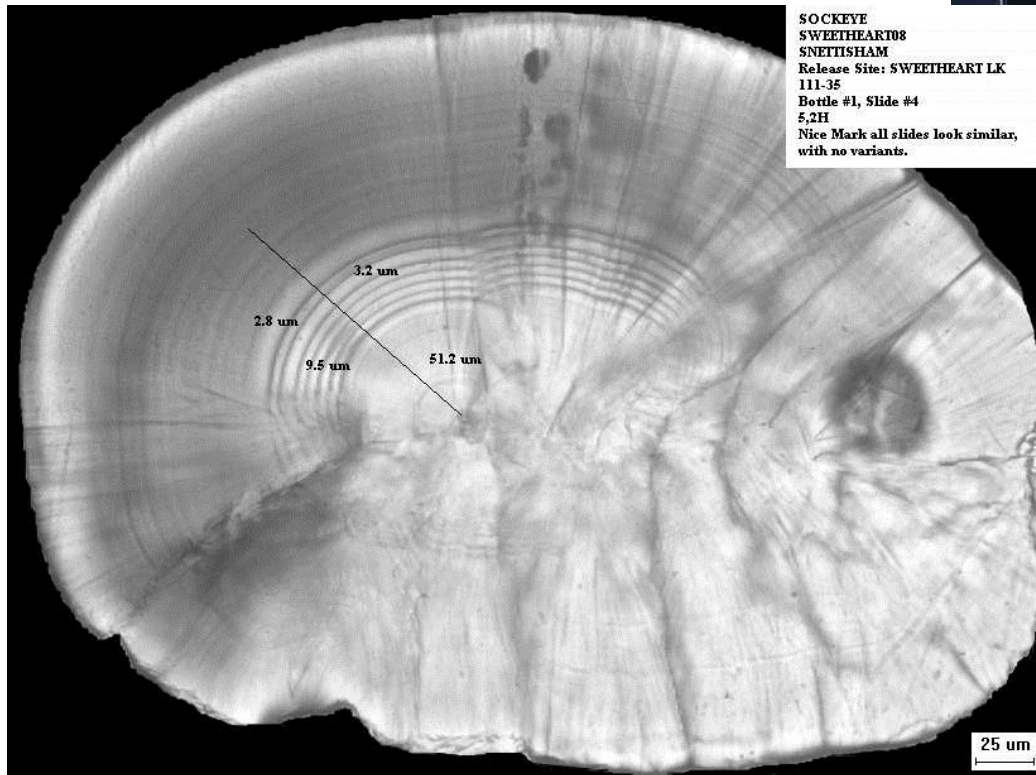


Egg bags are disinfected inside the fertilization and incubation module



Evaluation & Monitoring

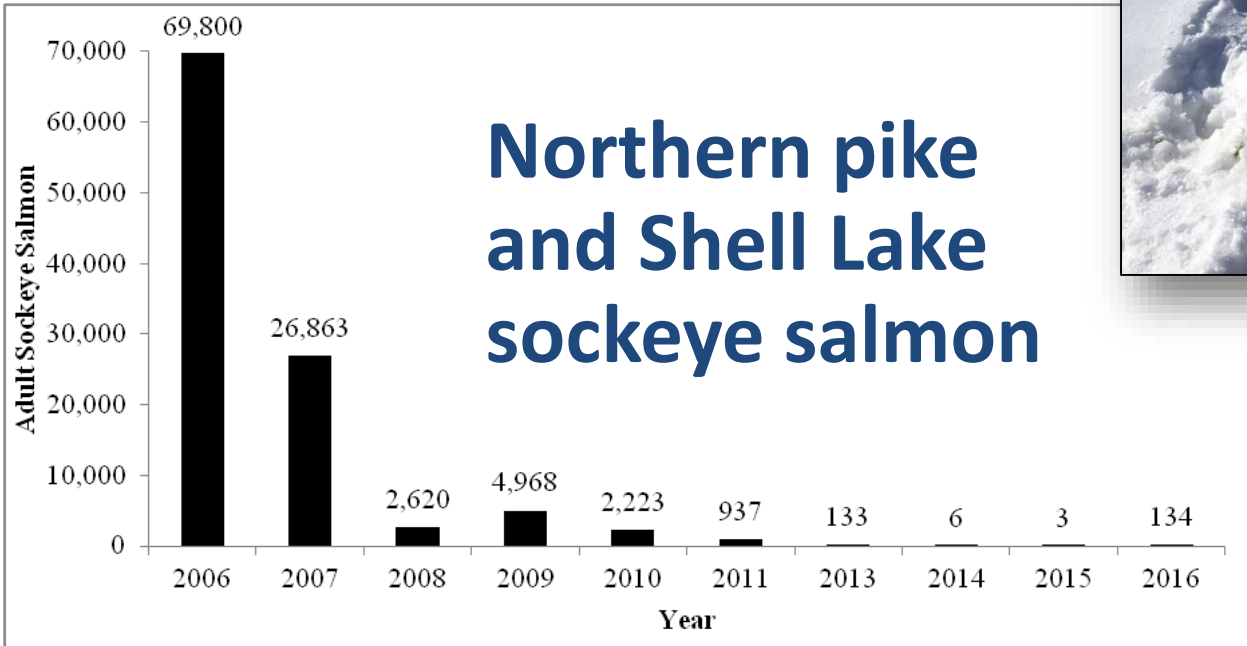
Limnology



SOCKEYE
SWEETHEART08
SNETTISHAM
Release Site: SWEETHEART LK
111-35
Bottle #1, Slide #4
5,2H
Nice Mark all slides look similar,
with no variants.

**Thermal marking:
Snettisham
Hatchery thermal
mark on Sockeye
*5, 2H***

Invasive Species



Gary Fandrei

gfandrei@ciaanet.org

www.ciaanet.org

www.facebook.com/CIAA1976

