

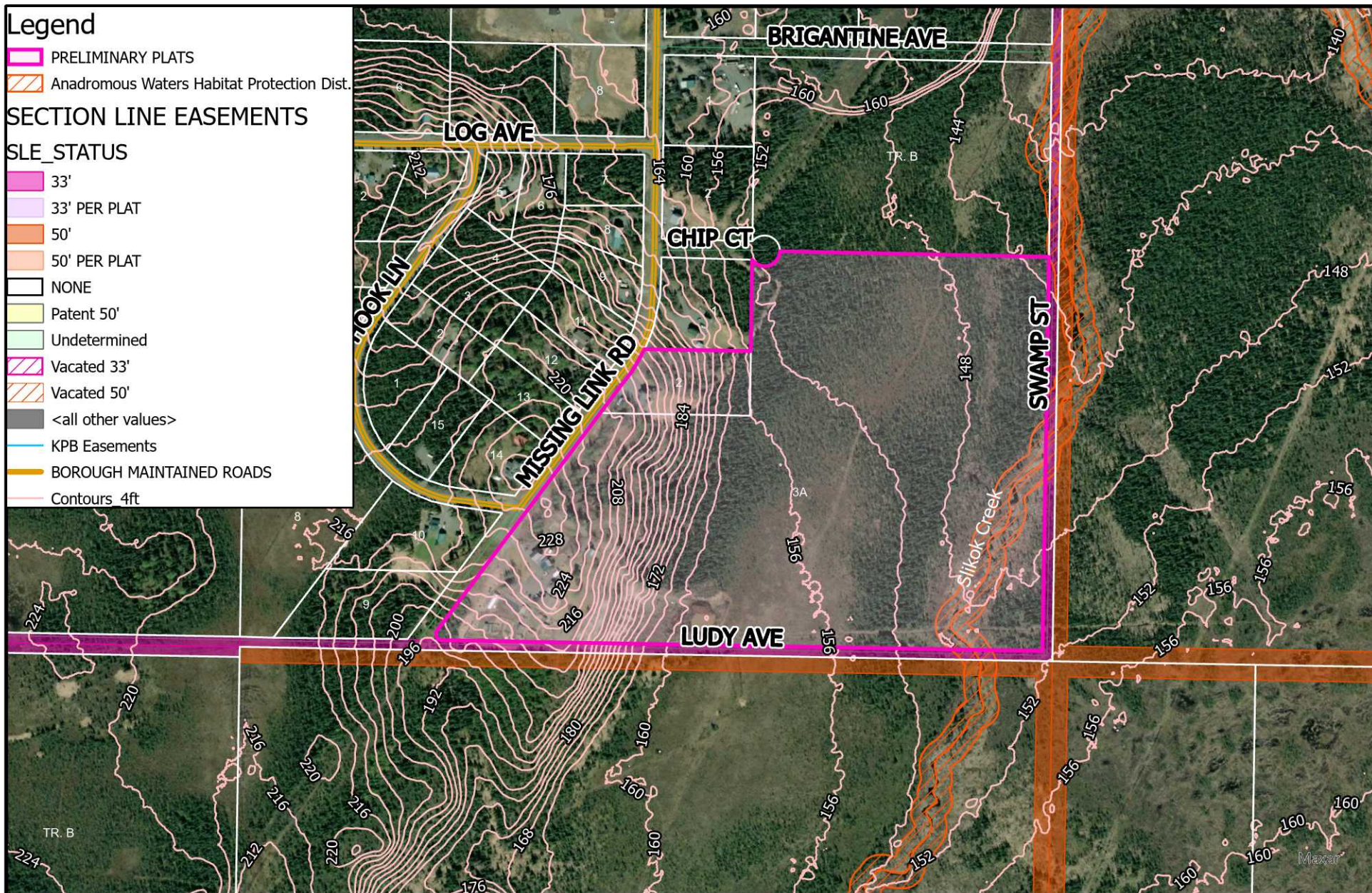
Legend

- PRELIMINARY PLATS
- Anadromous Waters Habitat Protection Dist.

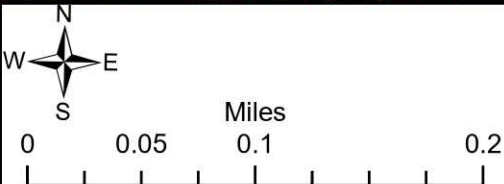
SECTION LINE EASEMENTS

SLE_STATUS

- 33'
- 33' PER PLAT
- 50'
- 50' PER PLAT
- NONE
- Patent 50'
- Undetermined
- Vacated 33'
- Vacated 50'
- <all other values>
- KPB Easements
- BOROUGH MAINTAINED ROADS
- Contours 4ft



The information depicted hereon is for a graphical representation only of best available sources. The Kenai Peninsula Borough assumes no responsibility for any errors on this map.



AERIAL IMAGERY 2018

CONTOURS, ANADROMOUS WATERS AND
SECTION LINE EASEMENTS

Date: 5/28/2021
1:50 PM
Scott Huff
Platting Manager