

STATE OF ALASKA DEPARTMENT OF TRANSPORTATION & PUBLIC FACILITIES

RECORD OF SURVEY RIGHT OF WAY BASE MAP

SEWARD HIGHWAY: M.P. 25.5 – 36 TRAIL RIVER TO STERLING WYE, REHABILITATION PROJECT No. 0311(031) / Z546590000

SPECIAL GENERAL NOTE:
SUBDIVISION NAMES PLAT NUMBERS, AND DEPICTION OF PROPERTIES ADJACENT TO THE RIGHT OF WAY SHOWN HEREON WERE GENERATED AT THE TIME OF INITIAL PLAN DEVELOPMENT, JULY 1, 2015. THIS PLAN SET DOES NOT NECESSARILY REFLECT THE CURRENT PROPERTY STATUS AT THE TIME OF THE RECORDING OF THIS DOCUMENT.

HORIZONTAL CONTROL STATEMENT

Coordinate System:

This project is located entirely within the SEWARD-1(2011) Adjustment, a local surface plane coordinate system developed by the Alaska Department of Transportation. SEWARD-1(2011) extends from the City of Seward to milepost 36 of the Seward Highway.

Basis of Coordinates:

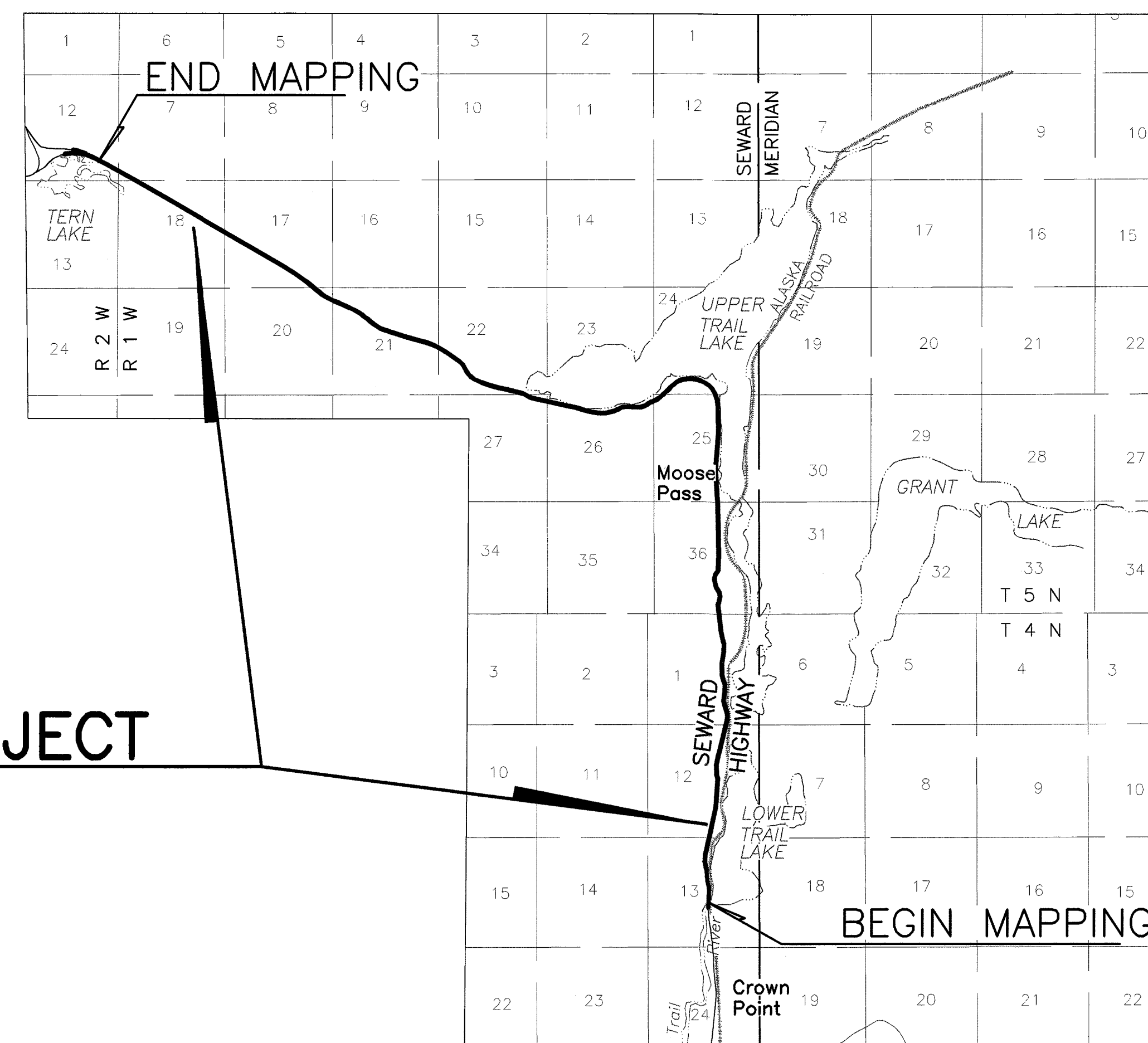
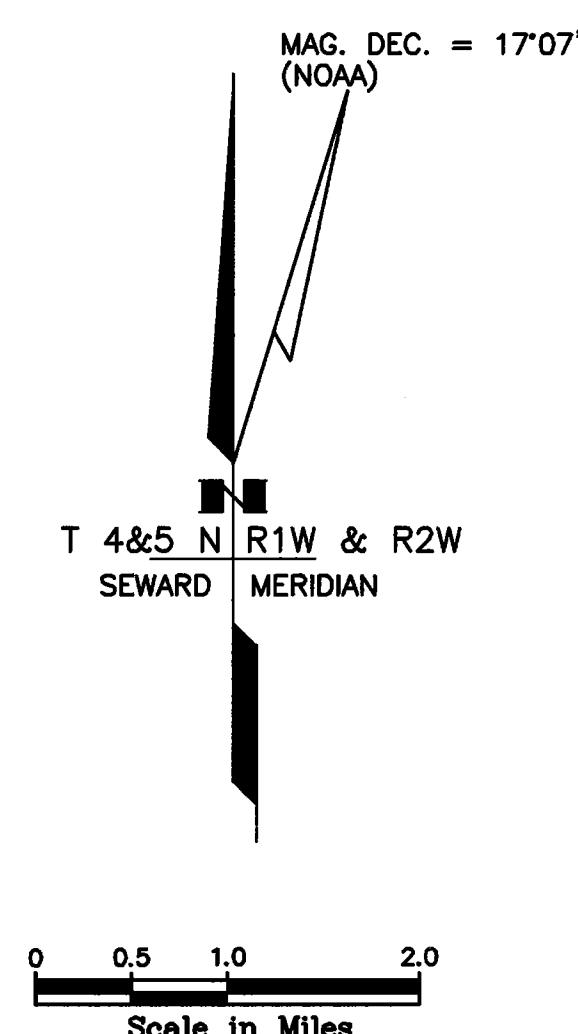
Basis of Coordinates is AK DOT&PF GPS 4, a brass disc set in the highway shoulder near the Moose Pass Fire Station. Said station has SEWARD-1(2011) coordinates of 403,144.4643 North, and 113,452.8528 East.

Basis of Bearings:

Basis of Bearings is a local plane bearing between AK DOT&PF GPS 4 and AK DOT&PF GPS 49, a brass disc set on the south side of Lawing Airport. AK DOT&PF GPS 49 bears S 01° 18' 44" E a distance of 30031.0300' U.S. Survey Feet from AK DOT&PF GPS 4. AK DOT&PF GPS 49 has SEWARD-1(2011) coordinates of 373,121.3105 North, and 114,140.6005 East.

Translation Parameters:

To convert local SEWARD-1(2011) coordinates to NAD83(2011) Alaska State Plane Zone 4, U.S. Foot coordinates, translate using +1,968,731.7053 feet North, +1,640,593.7557 feet East, and scale using 0.9998991189.



SPECIAL PLAT NOTE:

THIS DOCUMENT DEPICTS AND DEFINES A PORTION OF THE SEWARD HIGHWAY CORRIDOR OPERATED AS A SEGMENT OF THE ALASKA STATE HIGHWAY SYSTEM BY THE ALASKA DEPARTMENT OF TRANSPORTATION & PUBLIC FACILITIES (AK DOT&PF) IN CONFORMANCE WITH STATE STATUTE AND CODE. THE MAPPING IS CURRENT AS OF DECEMBER 31, 2018. THIS CORRIDOR IS SUBJECT TO CHANGE WITH ANY SUBSEQUENT STATE PROJECTS OR ADJACENT PLATTING ACTIONS.

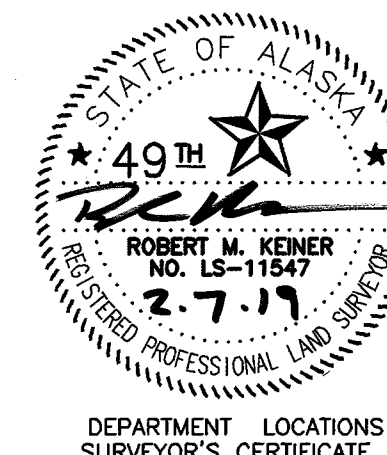
DEPARTMENT LOCATIONS SURVEYOR'S CERTIFICATE

I HEREBY CERTIFY THAT I AM A PROFESSIONAL LAND SURVEYOR REGISTERED IN THE STATE OF ALASKA AND THAT ALL RIGHT-OF-WAY CENTERLINE MONUMENT LOCATIONS HAVE BEEN ESTABLISHED AS INDICATED ON THE RIGHT-OF-WAY PLANS. ALL EXISTING FOUND SUBDIVISION MONUMENTS, PROPERTY CORNERS AND SECTION LINE MONUMENTATION AS INDICATED ON THE RIGHT-OF-WAY PLANS HAVE BEEN REFERENCED TO PROJECT SURVEY CONTROLS BY ME OR UNDER MY SUPERVISION.

DATE 2-7-19 REGISTRATION NUMBER LS-11547

ROBERT M. KEINER

STATE OF ALASKA
DEPARTMENT OF TRANSPORTATION
& PUBLIC FACILITIES
4111 AVIATION AVE.
ANCH., AK 99502
(907) 269-0700



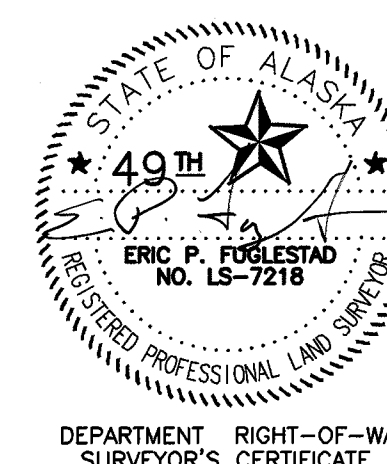
DEPARTMENT RIGHT-OF-WAY SURVEYOR'S CERTIFICATE

I HEREBY CERTIFY THAT I AM A PROFESSIONAL LAND SURVEYOR REGISTERED IN THE STATE OF ALASKA AND THAT THIS PLAT WAS MADE BY ME OR UNDER MY SUPERVISION. THIS PLAT WAS BASED UPON THE MONUMENTS RECOVERED DURING THE DEPARTMENT'S LOCATIONS SURVEY FOR THIS PROJECT.

DATE 2/7/19 REGISTRATION NUMBER LS-7218

ERIC P. FUGLESTAD

STATE OF ALASKA
DEPARTMENT OF TRANSPORTATION
& PUBLIC FACILITIES
4111 AVIATION AVE.
ANCH., AK 99502
(907) 269-0700



DEPARTMENT OF
TRANSPORTATION & PUBLIC FACILITIES

APPROVED FEBRUARY 19, 2019
Date

REGIONAL CHIEF R/W AGENT

RECORD OF SURVEY

THIS SURVEY DOES NOT CONSTITUTE A SUBDIVISION AS DEFINED BY AS 40.15.900(5)(A).

LOCATED WITHIN

PARTIALLY SURVEYED SECTIONS 1, 12, & 13
TOWNSHIP 4 NORTH, RANGE 1 WEST,

AND

PROTRACTED SECTIONS 7, 17, 18, 20, & 21
PARTIALLY SURVEYED SECTIONS

22, 24, 25, 26, 27, & 36

TOWNSHIP 5 NORTH, RANGE 1 WEST,

AND

PROTRACTED SECTION 12
TOWNSHIP 5 NORTH, RANGE 2 WEST

SEWARD MERIDIAN, ALASKA

STATE BUSINESS – NO FEE

Seward Recording District

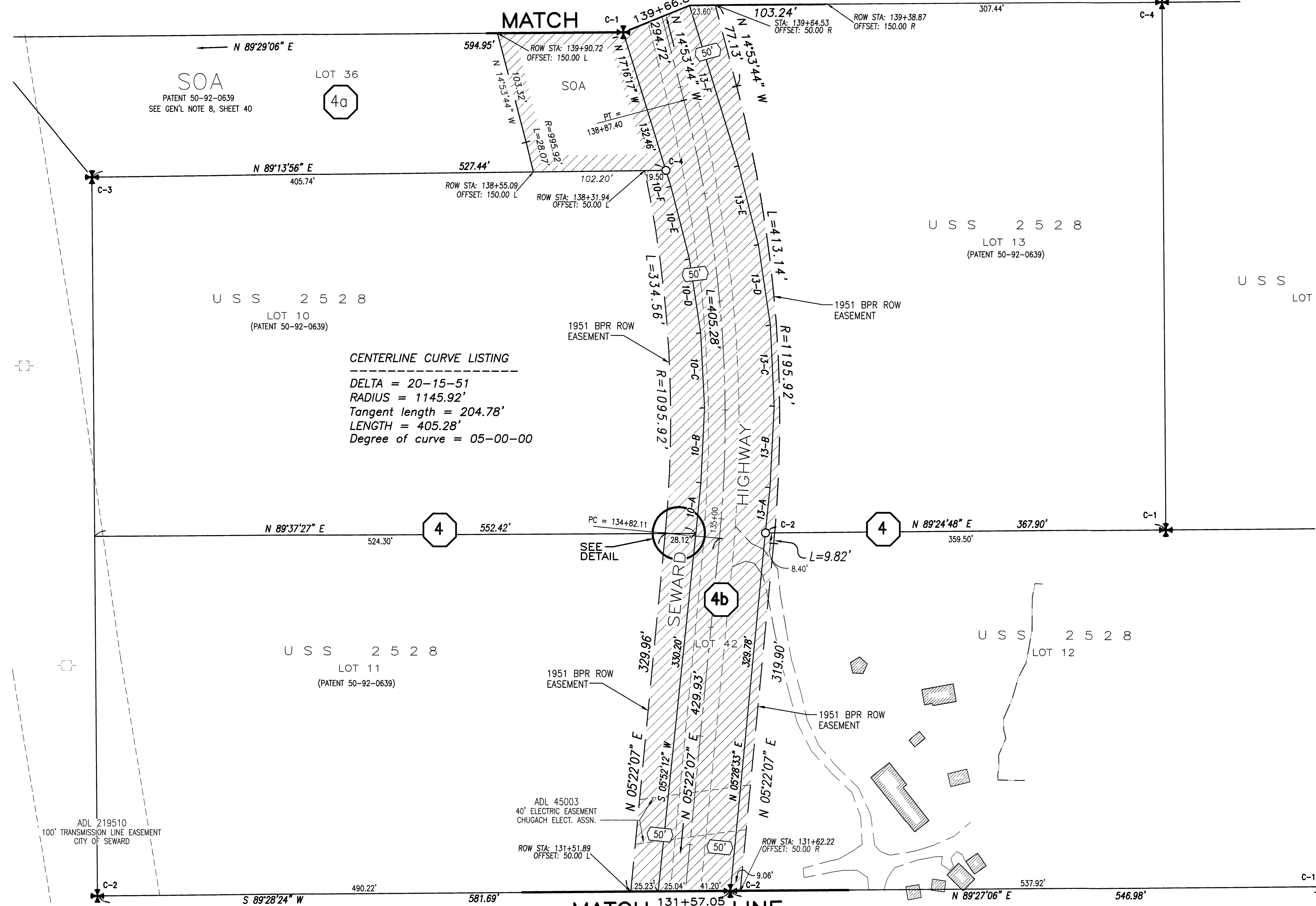
VICINITY MAP

U.S.G.S. QUAD. SEWARD (B-7) & (C-7), ALASKA, 1994

1" = 1 MILE

Seward Recording District PL 2019-2

SHEET 14
LINE

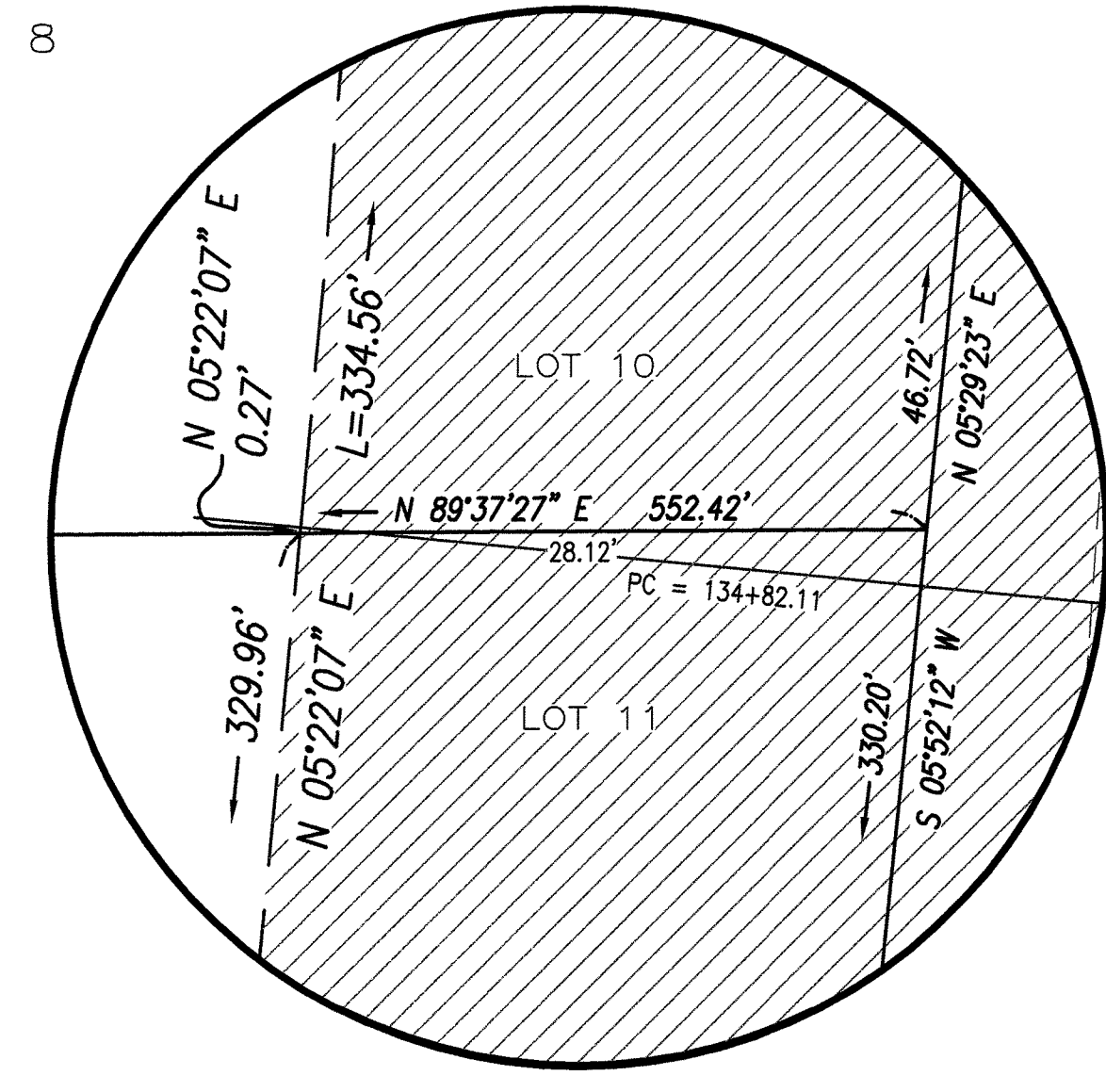


LINE TABLE - LOT 10, USS 2528

LINE	DIRECTION	DISTANCE
10-A	N 05°29'23" E	46.72'
10-B	N 02°38'23" E	68.75'
10-C	N 03°03'37" W	68.75'
10-D	N 08°45'37" W	68.75'
10-E	N 14°27'37" W	68.75'
10-F	N 17°16'37" W	15.35'

LINE TABLE - LOT 13, USS 2528

LINE	DIRECTION	DISTANCE
13-A	N 05°39'13" E	41.93'
13-B	N 02°48'13" E	74.62'
13-C	N 02°53'47" W	74.62'
13-D	N 08°35'47" W	74.62'
13-E	N 14°17'47" W	74.62'
13-F	N 17°06'47" W	153.87'



DETAIL
SCALE: NONE

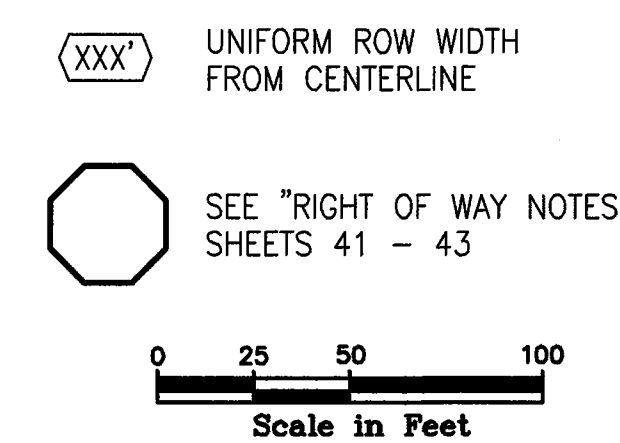
T 4 N R 1 W
S. M.
SEC. 1

ROW PLAN NOTE
THESE PLANS ARE TO BE USED FOR THE ESTABLISHMENT OF THE HIGHWAY RIGHT OF WAY LIMITS ONLY. THESE DRAWINGS ARE NOT TO BE USED FOR ESTABLISHING ADJOINING PROPERTY LINES OR CORNERS.

RIGHT-OF-WAY (ROW) STATIONING NOTES

1. THE STATIONING SHOWN HEREIN HAS BEEN ESTABLISHED SOLELY FOR THE PURPOSE OF LOCATING AND DEFINING THE ROW OF THE SEWARD HIGHWAY, MP 25.5 - 36. THIS STATIONING DOES NOT CORRESPOND TO ANY PREVIOUS MAPPING OR PROJECTS FOR THIS SECTION OF THE HIGHWAY.

2. STATIONS AND OFFSETS SHOWN HEREIN ARE TO COMPUTED ROW LOCATIONS. SEE MONUMENT SUMMARY SHEETS FOR POSITIONS OF RECOVERED CORNER MONUMENTS.



DATE	REVISIONS	BY

STATE OF ALASKA
DEPARTMENT OF TRANSPORTATION
&
PUBLIC FACILITIES
RECORD OF SURVEY
RIGHT OF WAY BASE MAP
PROJECT No. 0311(031) / Z546590000
SEWARD HIGHWAY: MP 25.5 - 36
TRAIL RIVER TO STERLING WYE, REHABILITATION

DRAWN epf	DATE JAN. 2019	SCALE 1" = 50'
CHECKED RVK	DATE Oct. 2017	SHEET 13 OF 51