

Officially Filed

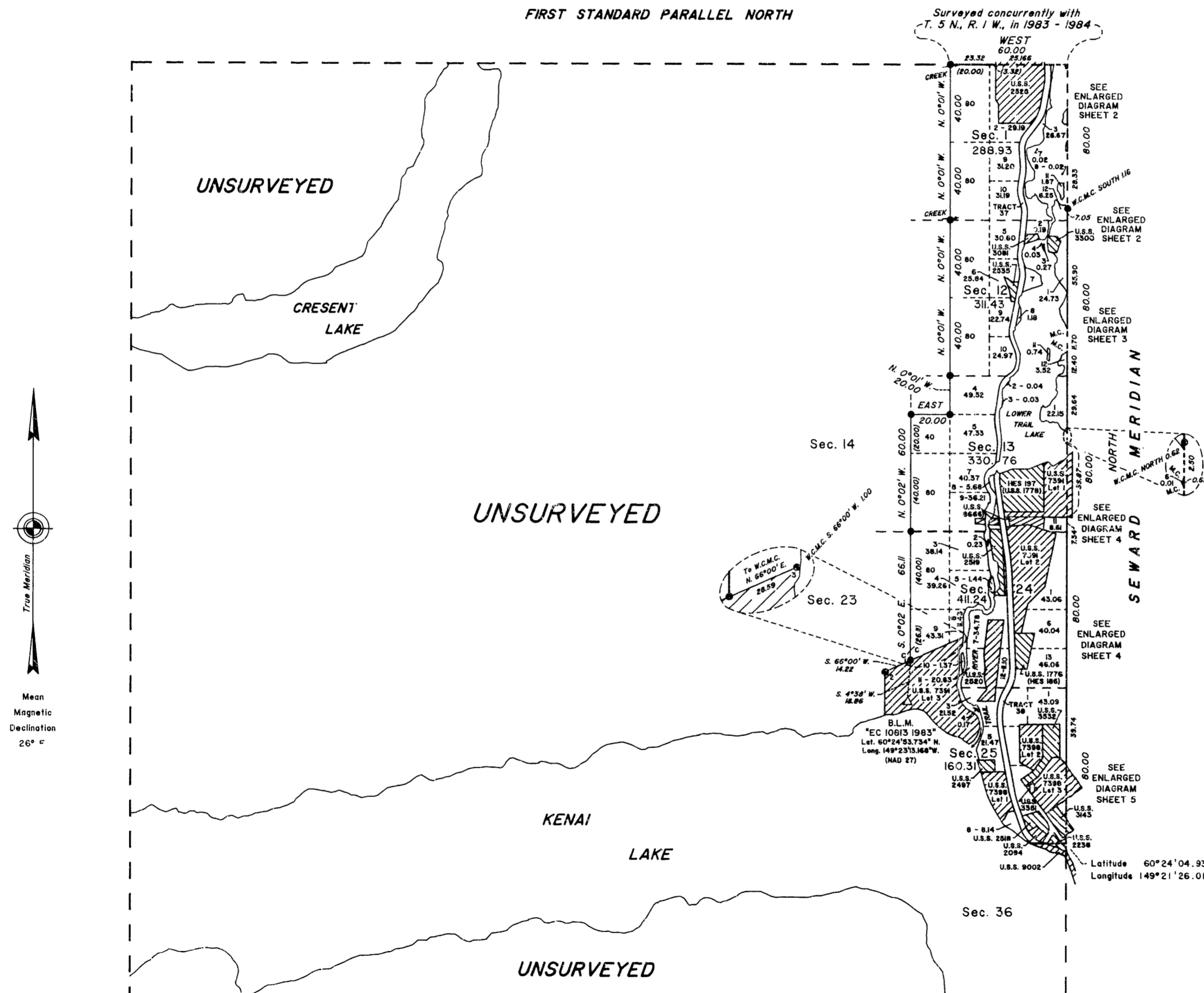
ORIGINAL

DATE NOVEMBER 6, 1990

Sheet 1 of 5 Sheets

TOWNSHIP 4 NORTH, RANGE 1 WEST, OF THE SEWARD MERIDIAN, ALASKA

FIRST STANDARD PARALLEL NORTH



The history of surveys is contained in the field notes.

This plat and the field notes represent the survey of a portion of the Seward Meridian through a portion of Township 4 North between Range 1 East and Range 1 West, a portion of the subdivisional lines, and Tracts 37 and 38; the retracement of portions of U.S. Survey Nos. 1776, 1778, 2094, 2518, 2528, 2535, 3081, 7391, and 7398; the dependent resurvey of a portion of U.S. Survey No. 2519; and the survey of a portion of the meanders of Township 4 North, Range 1 West, Seward Meridian, Alaska. A portion of the subdivisional lines were surveyed by protraction as shown on this plat.

This survey was executed by William H. Twenhofel, Cadastral Surveyor, May 23, 1983, through August 16, 1986, in accordance with the specifications set forth in the Manual of Surveying Instructions, 1973; Special Instructions for Group No. 408, Alaska, dated January 3, 1983, approved April 26, 1983, and Supplemental Special Instructions dated April 29, 1987, approved April 30, 1987; and Assignment Instructions dated April 14, 1983.

Parcels shown on this plat identify submerged land within the Alaska Railroad right-of-way.

The hydrography shown on this plat was obtained by the Auto-Surveyor method.

Acceptance of this survey does not purport to transfer any interest in submerged lands to which the State of Alaska is entitled under the Equal Footing Doctrine and Section 6(m) of the Alaska Statehood Act, P.L. 85-508, notwithstanding the use, location, or absence of meander lines to depict water bodies.

UNITED STATES DEPARTMENT OF THE INTERIOR
BUREAU OF LAND MANAGEMENT
Anchorage, Alaska

This plat is strictly conformable to the approved field notes, and the survey, having been correctly executed in accordance with the requirements of law and the regulations of this Bureau, is hereby accepted.

For the Director

Robert H. Anderson 29 October 1990
Date

Deputy State Director for Cadastral Survey,
Alaska