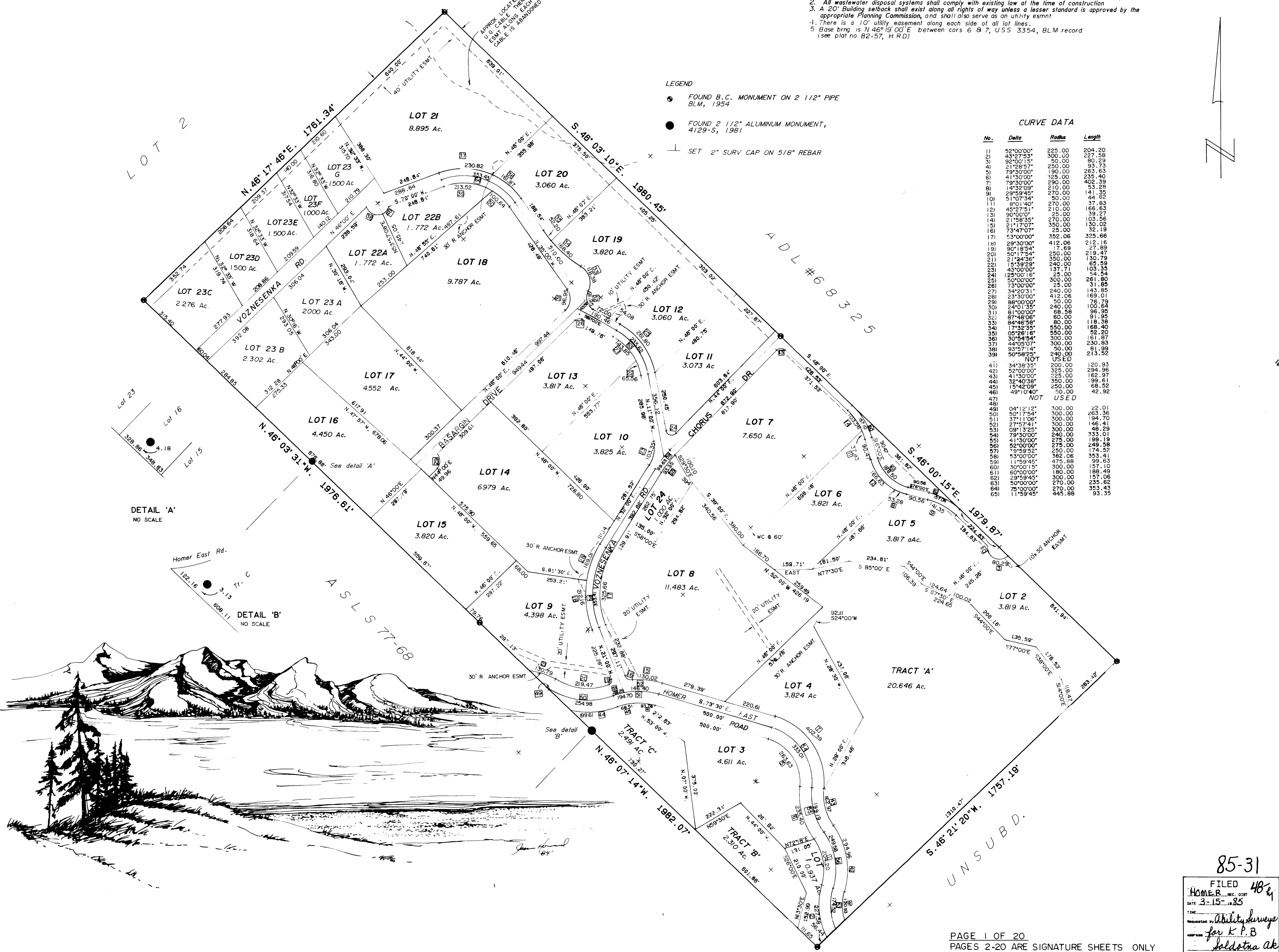


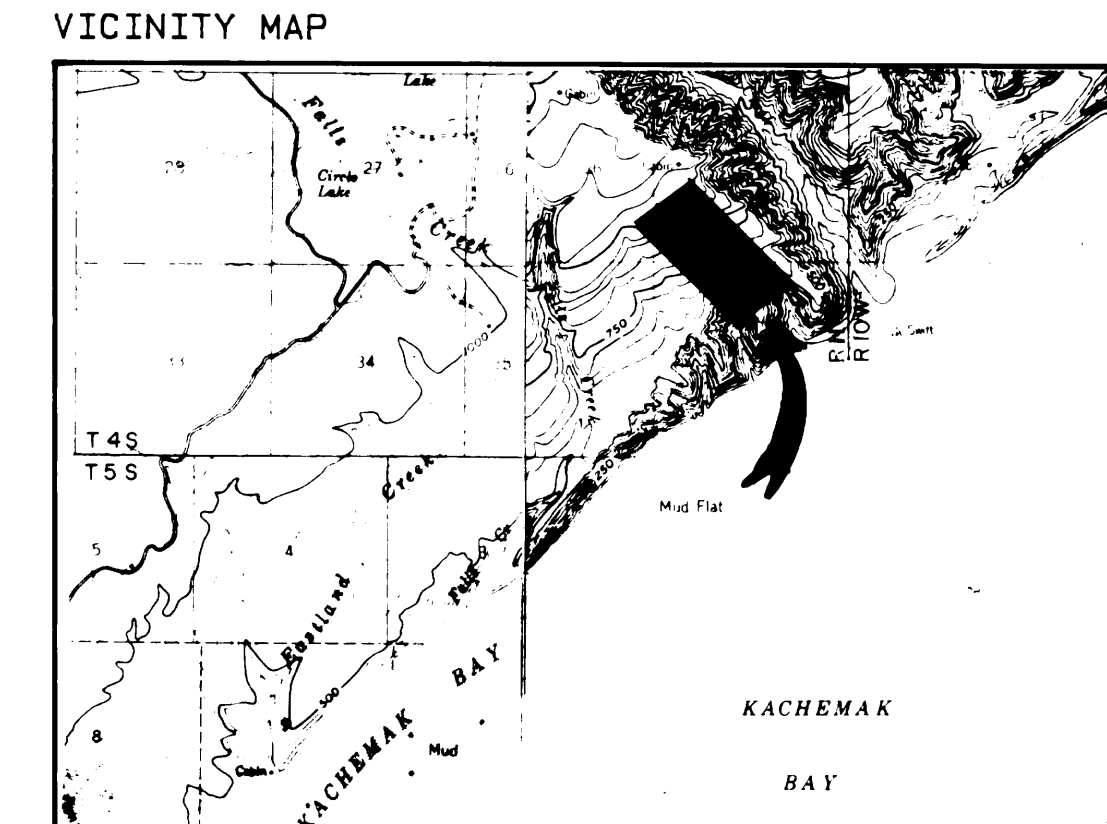
NOTE: See Resolution 2021-18



SEE SHEETS 2 THROUGH 20 FOR OWNERSHIP

**SURVEYORS CERTIFICATE**  
The undersigned registered surveyor hereby certify that a land survey has been completed by me or under my direct supervision. I declare that the corners and monuments have been located and established as shown and that the information shown hereon is true and correct to the best of my knowledge and belief.  
*[Signature]* 2-27-85  
Date  
Jerry A. Anderson RLS # 3686-S

**PLAT APPROVAL**  
This plat was approved by the Kenai Peninsula Borough Planning Commission at the meeting of August 14, 1984.  
Kenai Peninsula Borough  
*[Signature]*  
By \_\_\_\_\_  
Authorized Official



DATE JULY 1984	
SCALE 1" = 200'	
DRAWN BY J.A.A.	
FLD. BK. No 157	
JOB No. 1631	
<b>VOZNESENKA</b> A subdivision of Lot 1, USS 3354 Within the SW 1/4 S 25 and the NW 1/4 S 36 Twp 45, Rge 11W, S.M. ALASKA (Protracted) On the North Shore of Kachemak Bay Ctng. 159.8816 Ac. m/l	
<b>ABILITY SURVEYS</b> Jerry Anderson RLS Box 378 Homer Alaska	

85-31  
FILED  
HOMER REC. DEPT.  
DATE 3-15-85  
TIME  
Requested by Ability Surveys  
for K.P.B.  
Soldotna Ak