

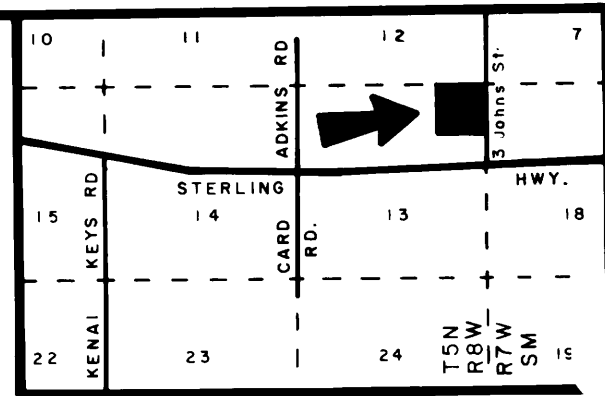
PLAT APPROVAL

This plat was approved by the Kenai Peninsula Borough Planning Commission at the meeting of April 22, 1985. KENAI PENINSULA BOROUGH BY John Smith

CON - JON SUBDIVISION

LOCATED IN NE1/4 NE1/4 SEC. 13, T5N, R8W, S.M., AK. SCALE 1"=100' AREA = 39.866 AC. 4-8-85

BY JOHN SMITH AND CONNIE FAIPEAS STAR RT. 2 BOX 297 STERLING, AK. 99672



VICINITY 1"=1 mi. MAP

LEGEND

- + - 1939 brass cap mon. by G.L.O., found
- - 1971 brass cap mon. by 237-S, found
- - 1985 aluminum mon. by 268-S, set
- - 1/2" x 2' rerod set

NOTE

A building setback of 20' from street r.o.w.'s is required unless a lesser standard is approved by a resolution of the appropriate planning commission. Building setback line to be limit of utility easements along streets.

OWNERS' CERTIFICATE & DEDICATION

We hereby certify that we are the owners of the property shown and described hereon, and that we hereby adopt this plan of subdivision, and dedicate all r.o.w.'s to public use, and grant all easements to uses shown.

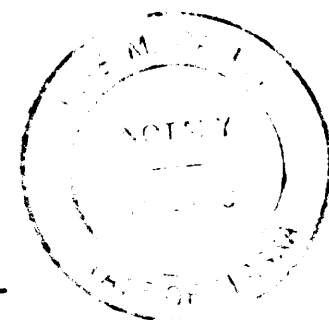
John Smith
John Smith
Connie Faipeas by Attorney John Smith
Connie Faipeas

NOTARY CERTIFICATE

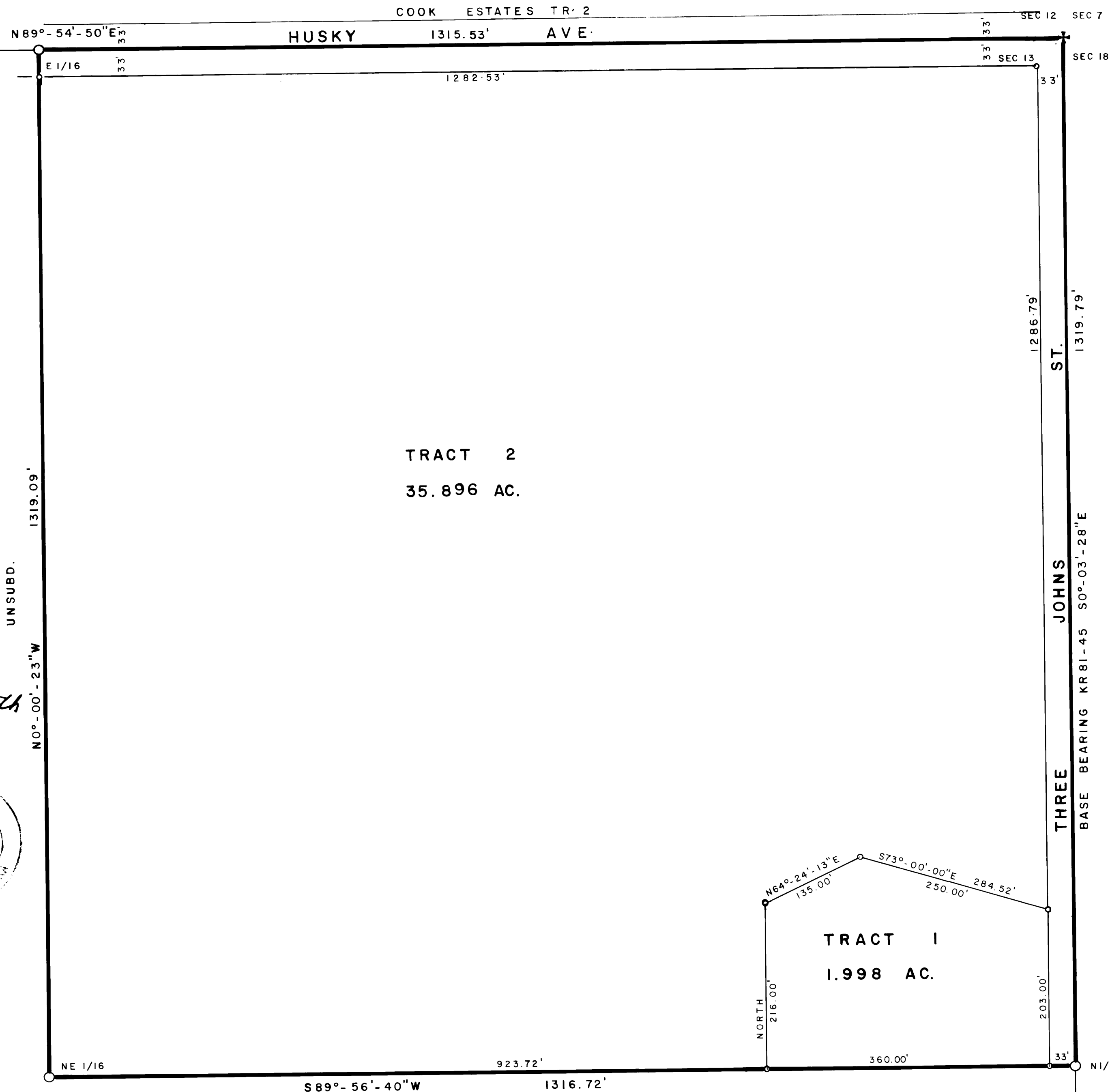
Subscribed and sworn to before me this 8th day of April, 1985.

Jane M. Gabler
NOTARY FOR ALASKA for John Smith and Connie Faipeas

My commission expires Sept. 13, 1985



95-77
10-
Kenai
5/10 85
1121 P
Henning Johnson
Clam Gulch
99568



CERTIFICATE OF APPROVAL BY THE ALASKA DEPARTMENT OF ENVIRONMENTAL CONSERVATION
This subdivision has been reviewed in accordance with 18AAC72.063 and is approved, subject to any noted modifications.
Leo Buchholz EFO 26 April 85
SIGNATURE TITLE



Box 27 Clam Gulch, Ak. 99568