



# WESTERN EMERGENCY SERVICES



Western  
Emergency  
Service  
Area (WESA)

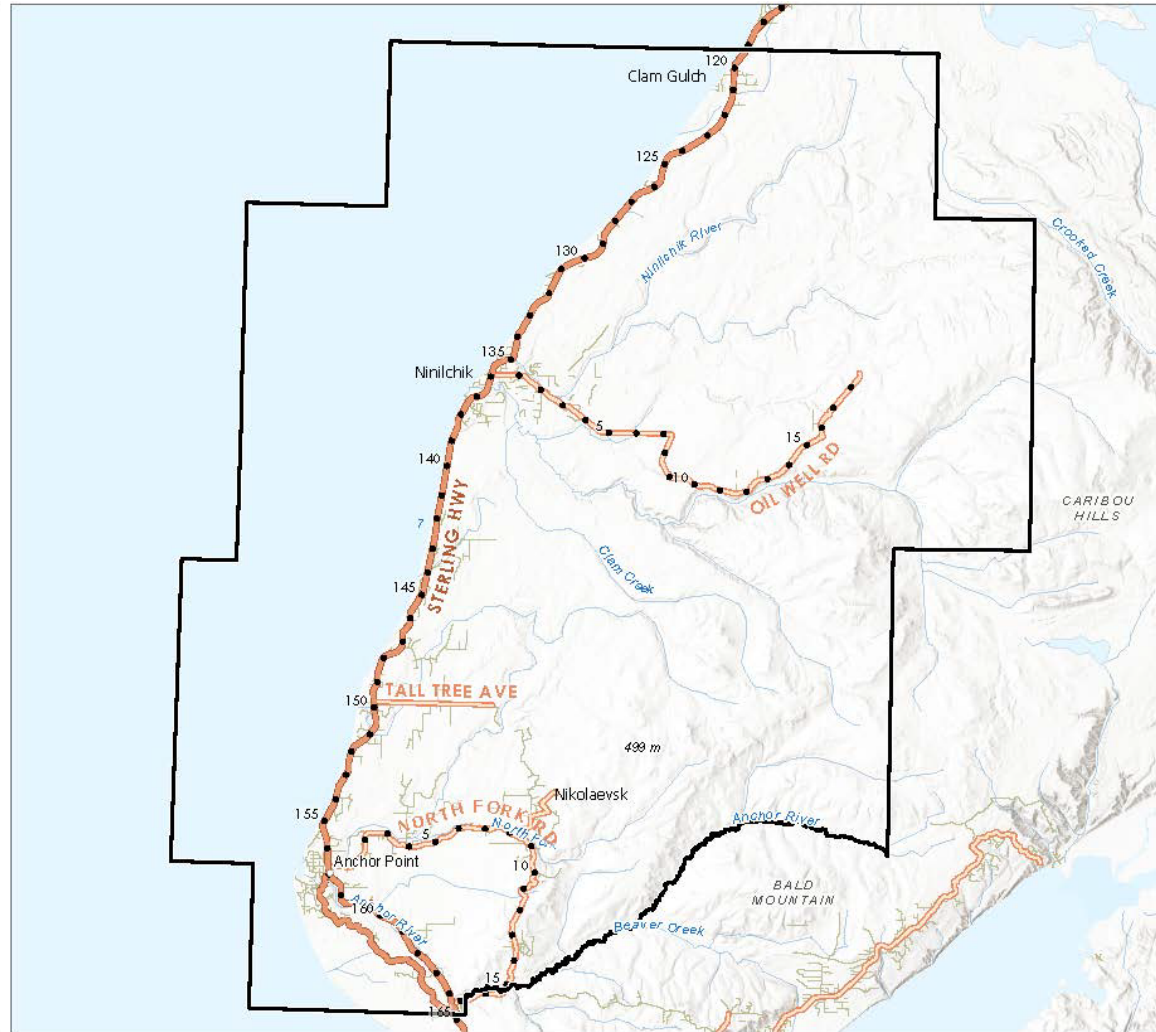
Map Date: 1/4/2021

State Highway  
Major Road  
Minor Road



0 1 2 Miles

The information  
depicted herein is for  
a graphical  
representation only of  
best available sources.  
The Kenai Peninsula  
Borough assumes no  
responsibility for any  
errors on this map.



# WESTERN EMERGENCY SERVICES

- 826 Square Miles
  - Anchor Point
    - Ninilchik
  - Happy Valley
    - Nikolaevsk
    - Clam Gulch
  - Caribou Hills



# WESTERN EMERGENCY SERVICES

45 Miles of the Sterling Highway

Old Sterling Highway

North Fork Road

Oil Well Road

Population of 4,043

ISO Rating 5/5Y



# WESTERN EMERGENCY SERVICES

## 3 Fire Stations

- ▶ Ninilchik - Station 1
- ▶ Anchor Point - Station 3
- ▶ Nikolaevsk - Station 4
- ▶ Emergency Water Fill Site in Happy Valley at Resch Road (MP 147 Sterling Highway). Future site for Station 2.





# APPARATUS



- 4 ENGINES
- 2 RESCUE TRUCKS
- 1 LADDER TRUCK
- 5 TANKERS
- 2 BRUSH TRUCKS
- 5 AMBULANCES
- 3 COMMAND VEHICLES
- 6 UTILITY VEHICLES
- 2 UTV's
- 1 SNOW MACHINE



# SERVICE AREA STAFFING

## Ten Fulltime Paid Employees

Chief, Deputy Chief, Assistant Chief,

5 Firefighter/ EMT 3 / Paramedics

1 Firefighter Technician and 1 Mechanic

## 40 Volunteer Responders

All active volunteers are certified  
Firefighters / EMTs / Paramedics



# FY22 Accomplishments

- Completed the first full fiscal year of operating the expanded Western Emergency Service Area.
- Reduced response times from dispatch to en route by 76% resulting in more than 80% of all calls being responded to in under one minute.
- Increased EMS level of service for all career line staff to AEMT or paramedic





# FY22 Accomplishments

- Replaced 4 cardiac monitor defibrillators to standardize all six monitors between stations.
- Replaced all self-contained breathing apparatus and compressors/fill stations to be NFPA compliant and remain interoperable with the surrounding agency.
- Acquired surplus engine, tanker, and rescue truck to replace outdated and unsafe apparatus.



# FY22 Accomplishments

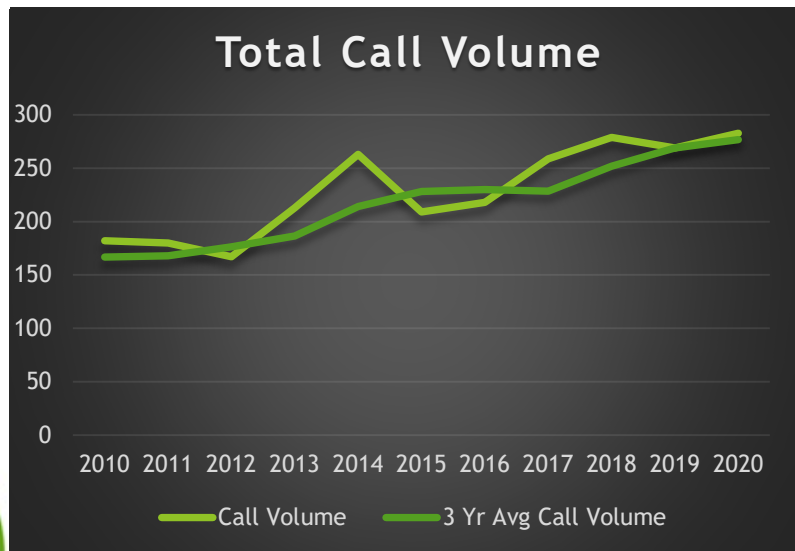
- Completion of the service areas first Fire Apparatus Driver Operator course for state certification.
- Completed construction of water fill site capital project at Resch Road to cut water shuttle times in half for fire suppression in Happy Valley.



# Major Long Term Issues and Concerns:

- Continued volunteer recruitment and retention.

Since 2010  
65% Increase in call volume  
63% reduction in volunteer response since  
2010



# Major Long Term Issues and Concerns:

- Continued training of current volunteers and newly recruited members.
- Obtaining funds to replacement plan for aging apparatus and utility vehicles.
- Construction of a new station in Happy Valley to address a 10-mile stretch along the Sterling Highway in between Ninilchik and Anchor Point that are not within 5 miles of a station.





# Major Long Term Issues and Concerns:

- Obtaining funding for the renovation and expansion of Station 3 in Anchor Point.
- Meeting minimum staffing requirement of 2 per station, to continue decreased response times.
- Secure funding for live-fire training facility within the service area.



# FY2023 New Initiatives:

- Purchase building currently leased to house ladder truck and land adjacent to the Anchor Point station for future expansion.
- Review all existing incident preplans and, complete new preplans for all commercial properties in the newly expanded service area.
- Implement and promote a Knox rapid access system for commercial properties and businesses.



# FY2023 New Initiatives:

- Purchase response/plow vehicle to provide access for other apparatus on emergency scenes.
- Purchase heavy-duty mobile truck lift to increase the capabilities of the service area mechanic.



# FY23 Budget Detail Changes

- Personnel increased \$77,926
- Supplies decreased \$2,334
- Services decreased \$42,663





# FY23 Budget Detail Changes

- **48515 Medical Equipment.** Decreased by \$41,196 due to one time purchases in FY22
- **48710 Minor Office Equipment.** 2 computers (\$1,300 each), 4 monitors (\$350 ea.) per 5 year scheduled replacement plan, 7 iPads for CAD interface (\$900 each), communication equipment replacement for items that become damaged beyond repair (\$3,000).
- **48720 Minor Office Furniture.** Reduced to zero, one time purchase in FY22.



# FY23 Budget Detail Changes

- **48750 Minor Medical Equipment.** Four video laryngoscopes (\$3,300 each), miscellaneous medical equipment that may become damaged during use (\$1,000).
- **48755 Minor Recreational Equipment.** Reduced to zero, one time purchase in FY22.



# FY23 Budget Detail Changes

- **48760 Minor Fire Fighting Equipment.** 8 sets of new turnout gear, helmets, boots, gloves and other related PPE per 10 year replacement plan (\$36,500), VFA grant matching funds (\$500), air lifting bags (\$9,000), master stream monitor (\$5,000), rope rescue equipment (\$8,500), positive pressure ventilation fans (\$8,000), thermal imaging cameras (\$14,000), portable scene lights (\$2,800), cutoff saws (\$4,000), vehicle stabilization & lifting struts (\$7,000) and miscellaneous minor fire equipment that may become damaged during use (\$3,500) All items except for turnout replacements are one time purchases.



# FY23 Capital Projects

- **Radio Replacement-** \$220,000 to replace 8 portable radios and all mobile radios in apparatus, utility vehicles and at the stations. The existing radios will soon require upgrades to remain functional with ALMR. These radios are outdated and do not have the capability to be upgraded so they will all require replacement.





# FY23 Capital Projects

- **Utility Vehicle Replacement** - \$60,000 will be used at Station 1 for emergency response and for transportation of members between stations for training. This vehicle will also be equipped with a plow in the event one is required to provide access for other responding emergency apparatus.



# FY23 Capital Projects

- **Mobile Heavy Duty Truck Lift-** \$65,000 mobile heavy duty truck lifts will be used by the service area mechanic to perform repairs and maintenance on apparatus that currently cannot be performed.





Questions?

