

DESK PACKET

(ITEMS THAT CAME IN AFTER MEETING PACKET WAS POSTED)

**KPB 21.18 ANADROMOUS WATERS HABITAT PROTECTION
ANNUAL REVIEW**

KPB 21.18 ANADROMOUS WATERS HABITAT PROTECTION ANNUAL REVIEW

River Center Manager

Samantha Lopez

October 10, 2022



K-Beach Elementary
Kenai Watershed Forum's
Adopt-a-Stream Program, 2002

DONALD E. GILMAN RIVER CENTER

The Donald E. Gilman River Center is a multi-agency permitting and education center.

We house several permitting agencies, streamlining the permitting process:

- KPB Planning & Zoning
- KPB Floodplain Management
- KPB Habitat Management
- ADFG Habitat
- ADNR – State Parks

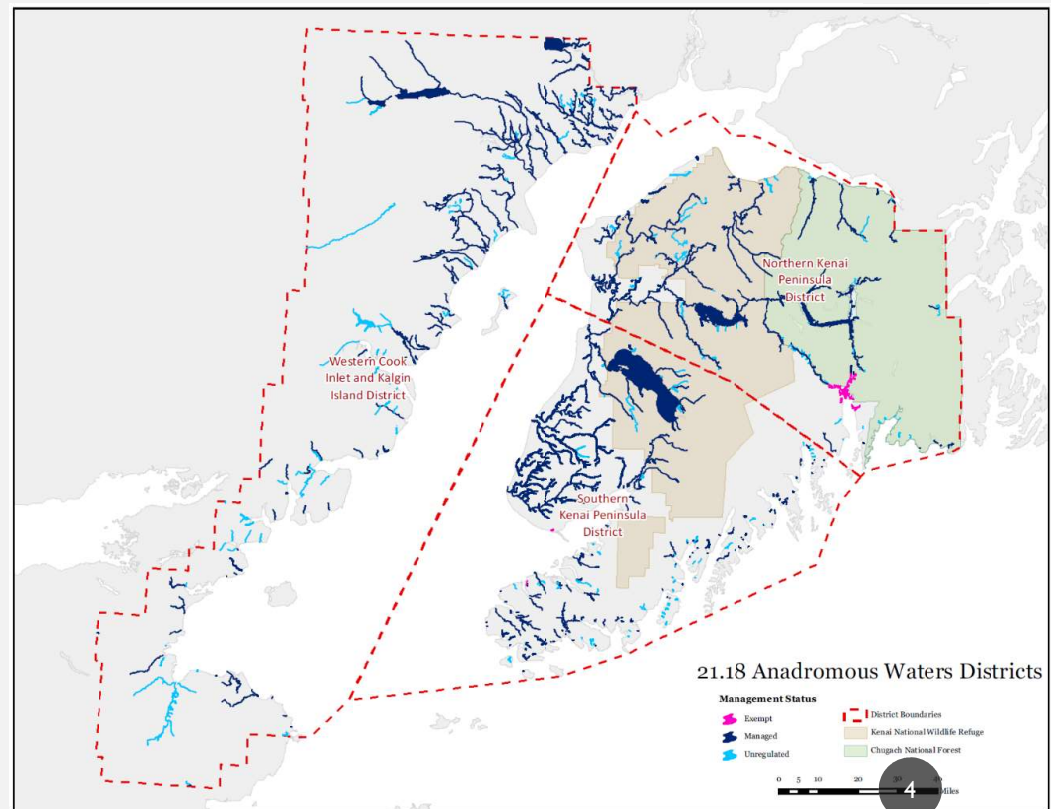


KPB 21.18 ANADROMOUS WATERS

Habitat Protection District

“all lands within 50 horizontal feet of anadromous water bodies”

- 793 waterbodies
- 2,337 miles of streams & rivers
- 70 lakes
- Over 28,000 acres



WHAT DO YOU NEED A PERMIT FOR?

Permit Needed

- Bank Restoration
 - Spruce Tree Revetments
 - Root Wads
 - Brush Layering
 - Elevated, light-penetrating walkways (ELP's)
 - Tree Cutting
- General Construction
 - Permanent structures, filling, grading
- Infrastructure
 - Culverts, bridges, roads

No Permit Needed

- Vegetation Maintenance
 - Trimming, pruning
 - Planting native vegetation
 - Removing naturally downed trees
- Maintenance of prior-existing uses
- Removing derelict structures
- Flagpoles

RESTORATION PROJECTS



INFRASTRUCTURE PROJECTS



RIP RAP

- Impervious surfaces are not allowable
 - Accelerates erosion
 - Can damage adjoining properties
 - Provide significantly less fish habitat
- When do we allow rip rap?
 - Public Infrastructure
 - Transportation (highways, railroads)
 - Utilities (power stations)
 - i.e. for the protection of essential public services



THE PURPOSE OF KPB 21.18

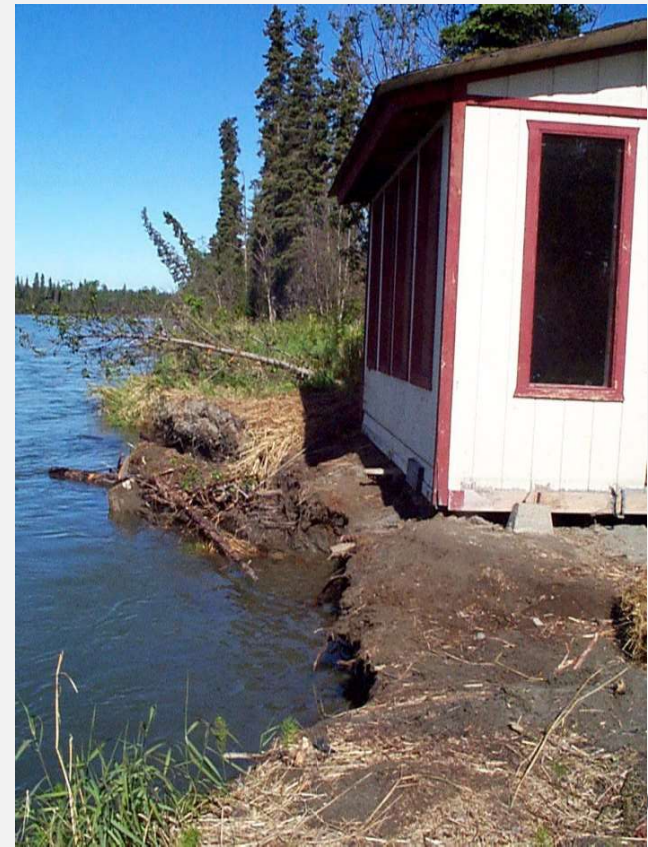


THE PURPOSE OF KPB 21.18



Before & after restoration

THE PURPOSE OF KPB 21.18



TYPES OF PERMITS

Permit Types

- Tree Cutting Permits
 - Same day – counter, email, etc.
- Staff Permits
 - New projects
 - Prior existing uses
 - Emergency authorizations
- Conditional Use Permits

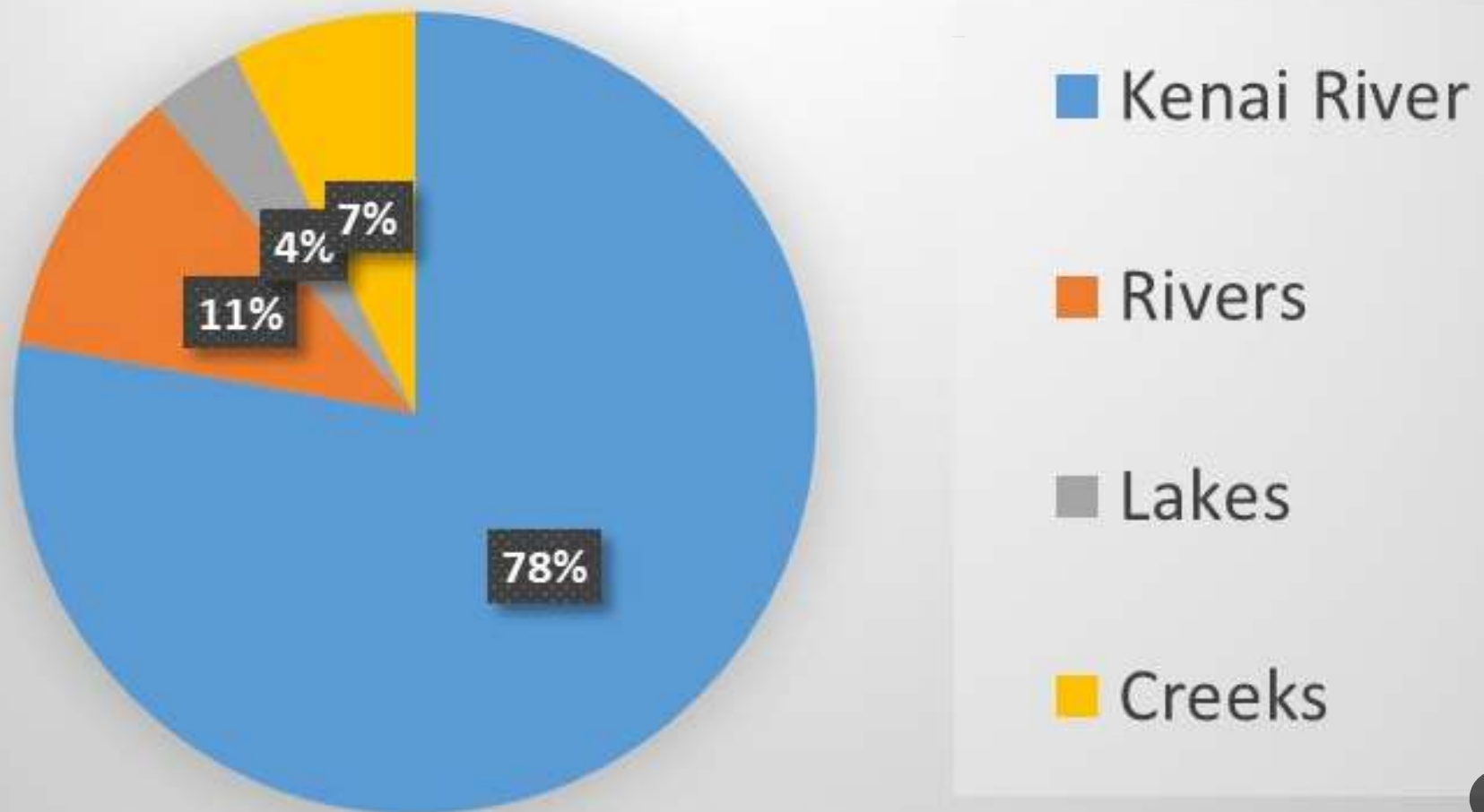
Conditional Use Permits

- Issued by the KPB Planning Commission
 - Fish cleaning stations
 - Fences
 - Signs
 - Public facilities and infrastructure
 - Wells and waterlines
 - ADA structures
 - Boat launches*

HPD Permits Issued



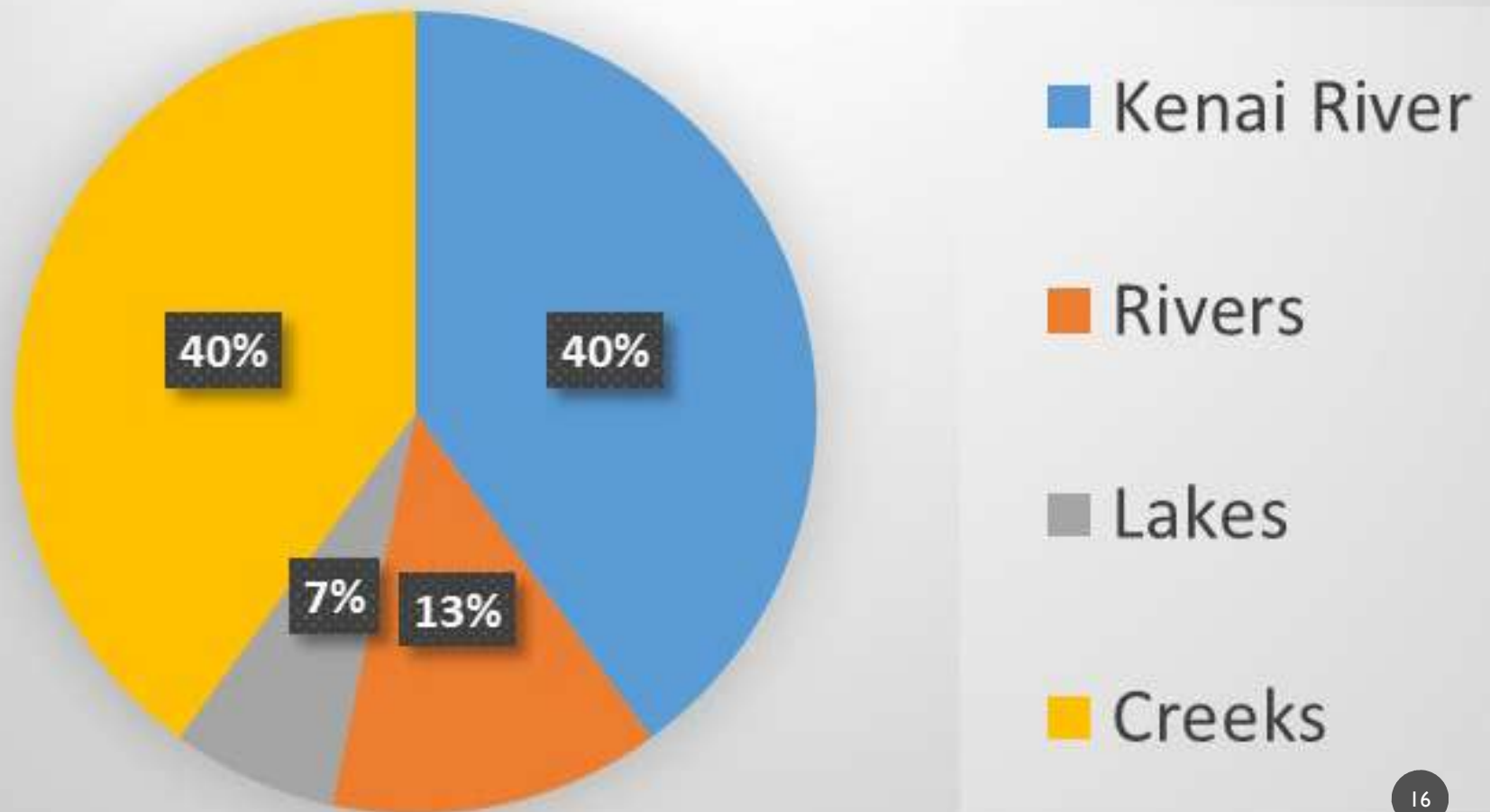
Staff Permits by Waterbody



Conditional Use Permits Over Time



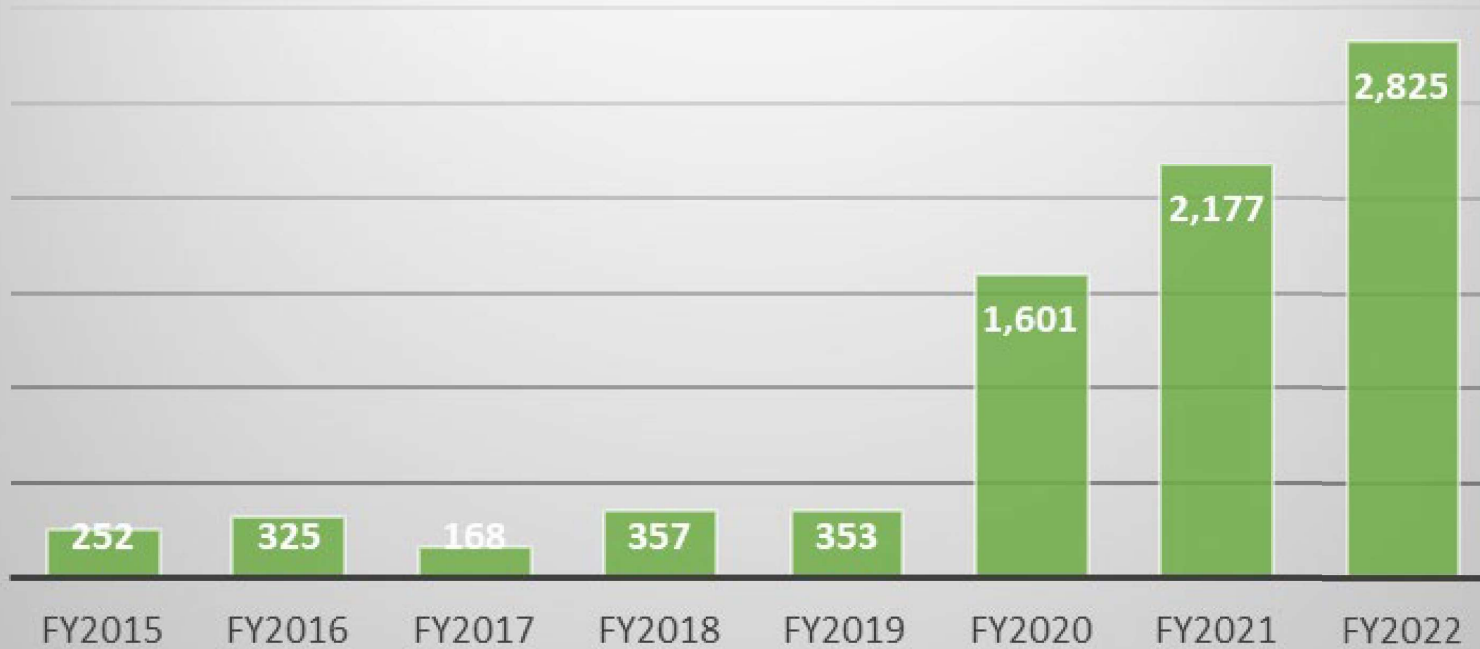
Conditional Use Permits by Waterbody



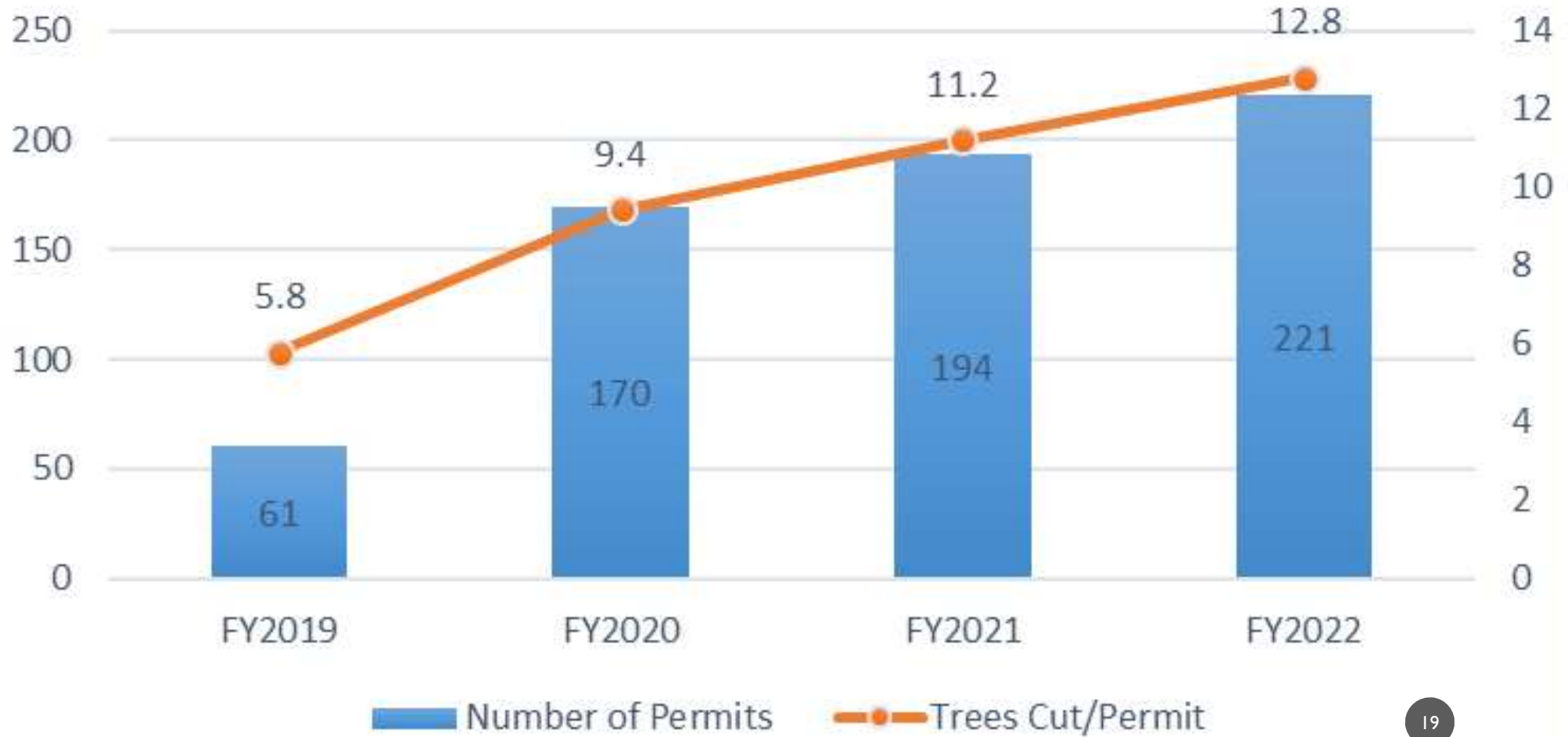
Habitat Tax Credits Issued



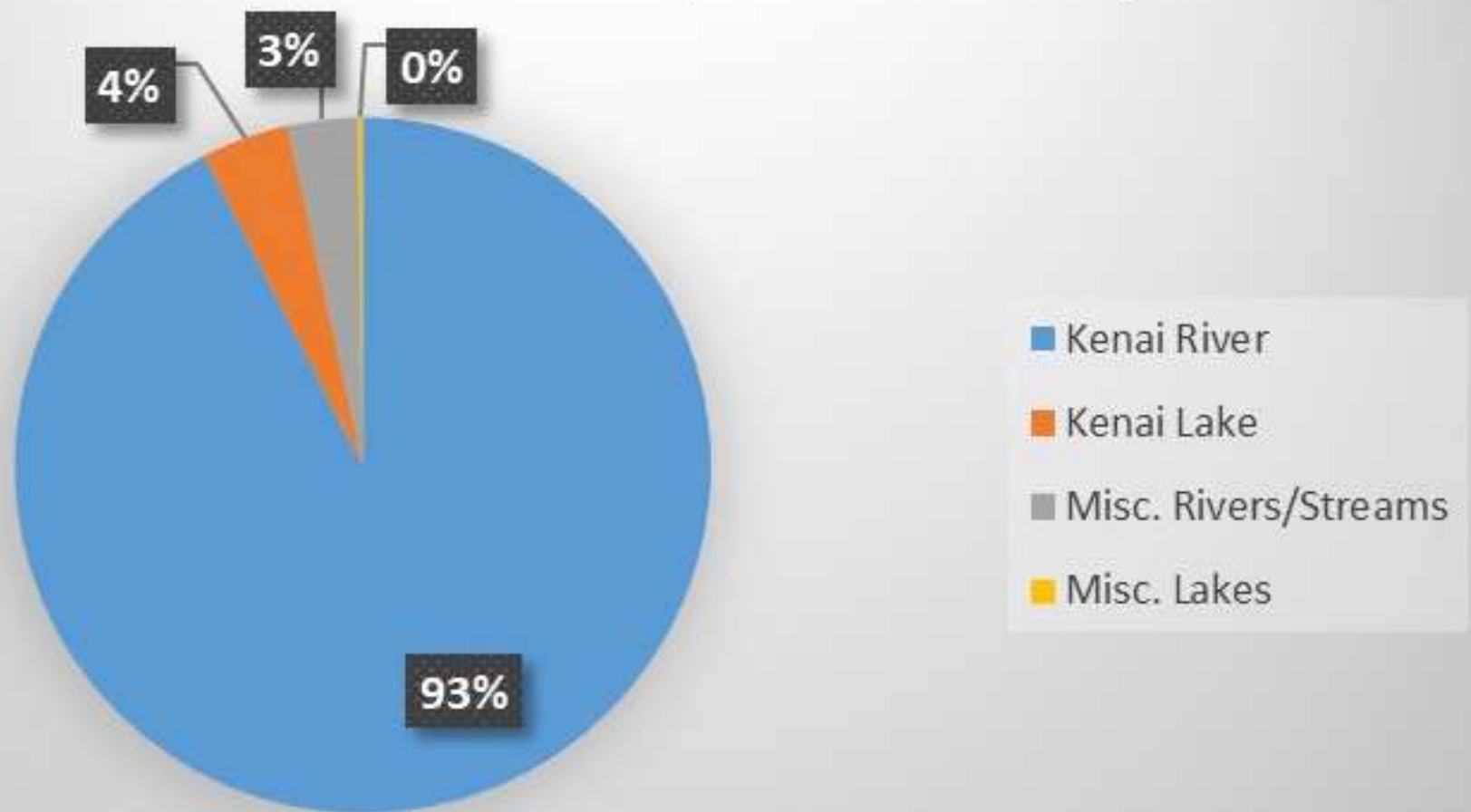
Trees Cut in the 50' Habitat Protection District



Tree Cutting by FY



FY22 Trees Cut by Waterbody



LOOKING FORWARD

- Spruce Bark Beetle Outbreak
 - Trees cut within 50' HPD have increased 10x
 - Public Outreach
 - Agency Coordination
 - KPB Land Management's Spruce Bark Beetle Mitigation Plan
 - OEM's Community Wildfire Protection Plan
- Address additions/deletions to the ADFG Anadromous Waters Catalog
- Habitat Conversion



HABITAT CONVERSION



Pre-1959



2022



COMMENTS/QUESTIONS