



**KENAI PENINSULA BOROUGH PLANNING COMMISSION  
RESOLUTION 2022-47  
SELDOVIA RECORDING DISTRICT**

Vacate the entire 20-foot-wide utility easement centered along the shown overhead powerline within Lot 2A-1, Seldovia Townsite East Addition 2006 Replat (SL 2007-3), granted by Seldovia Townsite East Addition 2006 Replat (SL 2007-3); within SW1/4 SW1/4 Section 32, Township 8 South, Range 14 West, Seward Meridian, Alaska, within the Kenai Peninsula Borough. KPB File 2022-148V

WHEREAS, Jennifer Watson of Anchorage, Alaska requested the vacation of the 20-foot-wide utility easement centered on an overhead powerline located on Lot 2A-1, Seldovia Townsite East Addition 2006 Replat (SL 2007-3), granted by Seldovia Townsite East Addition 2006 Replat (SL 2007-3) and;

WHEREAS, per KPB 20.30.060(A) – Easements – Requirements, the planning commission may require easements it determines necessary for the benefit of the public. Such easements include, but are not limited to, lateral support (slope) easements, drainage easements for ditching or protection of a drainage, and utility easements. Required easements do not need to be for road purposes.

WHEREAS, affected utility companies provided written non-objection to the proposed vacation; and

WHEREAS, per the petition, the easement is not in use by any utility companies; and

WHEREAS, the proposed vacation will not deny utility easement(s) to surrounding properties; and

WHEREAS, on October 24, 2022, the Kenai Peninsula Borough Planning Commission considered the background information, all comments received, and recommendations from KPB Planning Department staff regarding the proposed vacation; and

WHEREAS, the Planning Commission has found that vacating the utility easement will not be detrimental to the public interest; and

WHEREAS, 20.65.070 of the Kenai Peninsula Borough Code of Ordinances authorizes the Planning Commission to accomplish vacations by Resolution.

NOW, THEREFORE, BE IT RESOLVED BY THE PLANNING COMMISSION OF THE KENAI PENINSULA BOROUGH:

Section 1. 20-foot-wide utility easement centered on an overhead powerline located on Lot 2A-1, Seldovia Townsite East Addition 2006 Replat (SL 2007-3), granted by Seldovia Townsite East Addition 2006 Replat (SL 2007-3), is hereby vacated.

Section 2. That an exhibit drawing or as built survey, prepared by a licensed surveyor, showing the location of the portion of the utility easement being vacated be attached to, and made a part of this resolution, becoming Page 2 of 2.

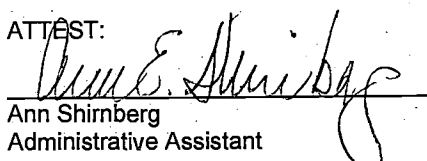
Section 3. That this resolution is eligible for recording upon being signed by the Planning Commission chairperson and will be deemed void if not recorded within 90 days of adoption.

Section 4. That this Resolution becomes effective upon being properly recorded with petitioner being responsible for payment of recording fee.

ADOPTED BY THE PLANNING COMMISSION OF THE KENAI PENINSULA BOROUGH ON THIS 24<sup>TH</sup> DAY OF OCTOBER 2022.

  
Jeremy Brantley, Chairperson  
Planning Commission

ATTEST:

  
Ann Shirnberg  
Administrative Assistant

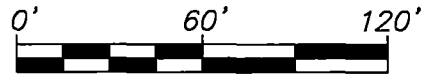
Return to:  
Kenai Peninsula Borough Planning Department  
144 North Binkley Street  
Soldotna, Alaska 99669

# EXHIBIT "A"

## UTILITY EASEMENT VACATION

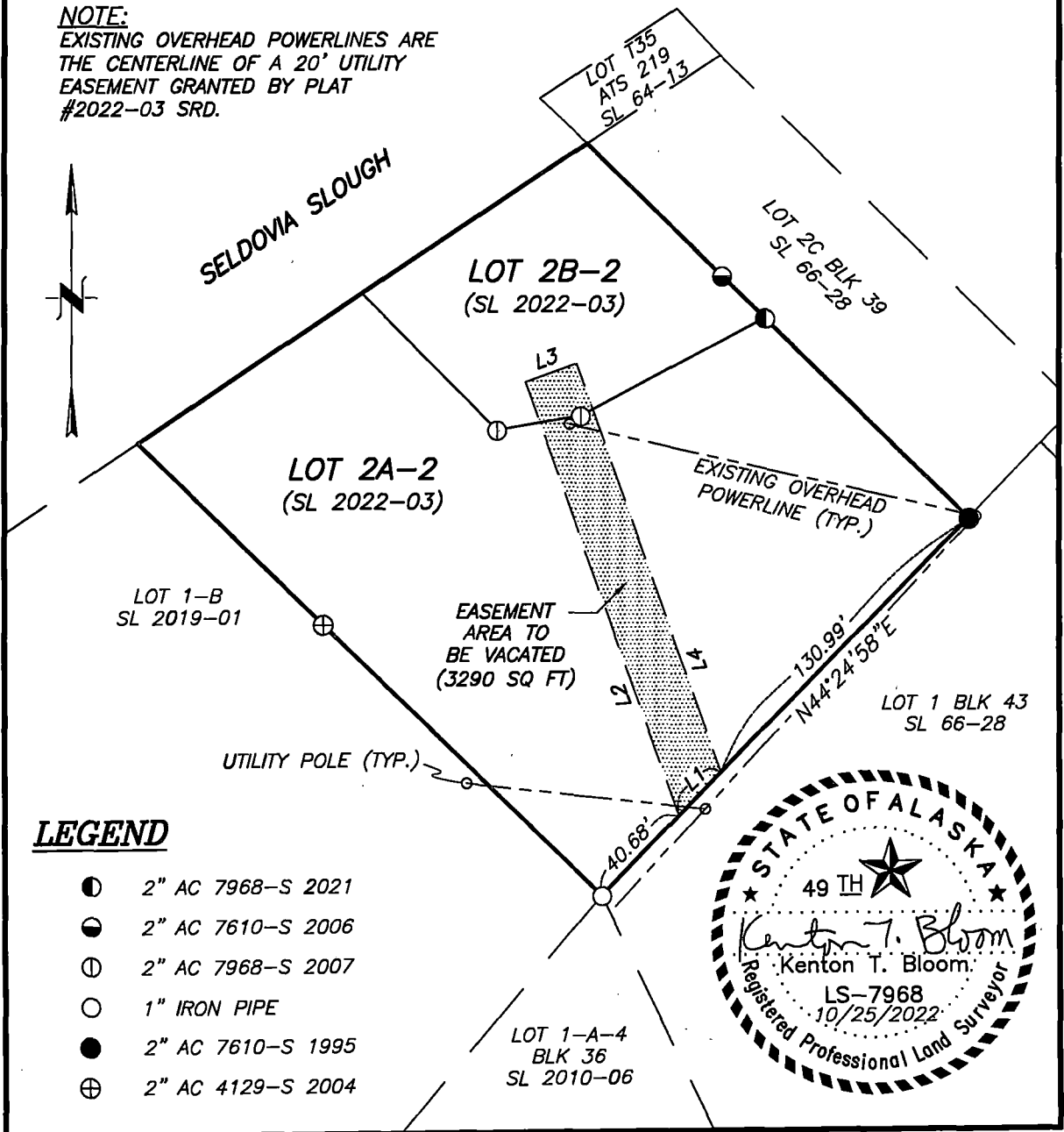
### SHEET 1 OF 1

| LINE TABLE |         |             |
|------------|---------|-------------|
| LINE #     | LENGTH  | BEARING     |
| L1         | 22.30'  | N44°24'58"E |
| L2         | 169.43' | N19°20'54"W |
| L3         | 20.00'  | S70°39'06"W |
| L4         | 159.58' | N19°20'54"W |



GRAPHIC SCALE

**NOTE:**  
 EXISTING OVERHEAD POWERLINES ARE THE CENTERLINE OF A 20' UTILITY EASEMENT GRANTED BY PLAT #2022-03 SRD.



**LEGEND**

- ⊙ 2" AC 7968-S 2021
- 2" AC 7610-S 2006
- ⊕ 2" AC 7968-S 2007
- 1" IRON PIPE
- 2" AC 7610-S 1995
- ⊕ 2" AC 4129-S 2004

