

*Kenai Public Health Updates  
October 10, 2023*

*Respiratory Viruses*

*Docket*

*AK Chronic Disease Brief Report 2023*

*Fresh Start*

*OD Map*



# Fall 2023 Vaccines Overview

Immunization	What are the options?	Who is eligible?	How well do they work?	When should I get it?
<b>Flu</b>	A shot or nasal spray that targets 4 strains of seasonal flu	≥6 months	Typically reduces the risk of going to the doctor by 40-60%. Early reports from 2023 Southern Hemisphere reduced risk of hospitalizations by 52%.	October is ideal, as vaccine protection wanes over a season.
<b>High-dose flu</b>	Contains four times the antigen as standard dose flu vaccines	≥65 years	more effective than standard dose at reducing cases of flu and flu-related complications	October is ideal, as vaccine protection wanes over a season.
<b>COVID</b>	Updated monovalent 2023-2024 vaccine formula, targeting XBB - an Omicron subvariant.  - mRNA options: Moderna, Pfizer  - protein option: Novavax (will be available when approved by FDA)	≥6 months	last fall the COVID vaccine provided 40-60% additional effectiveness against severe disease	Eligible >2 months after previous COVID vaccine; suggested to wait 3 months after infection  For protection against severe infection, get it anytime.  For protection against infection, it's best to get it before a wave, which is challenging to predict.
<b>RSV for older adults</b>	GSK and Pfizer; they are very similar vaccines	≥60 years, with conversation with health care provider	82-86% efficacy against severe disease	Whenever available, no need to juggle timing.
<b>RSV during pregnancy</b>	FDA has approved Pfizer vaccine; awaiting ACIP (meeting 9/22) recommendation & CDC approval	Pregnant people (protection is passed to baby in first 6 months of life)	82% efficacy in preventing hospitalization in first 3 months of baby's life. 69% efficacy after 6 months.	When approved, receive during 32-36 weeks of pregnancy.
<b>RSV antibody for infants</b>	Nirsevimab (monoclonal antibody) from AstraZeneca.	All infants <8 months and high-risk infants 8-19 months	Reduces risk of hospitalization and health care visits by around 80%.	As soon as available (October). Protection lasts at least 4-6 months.



## Flu Snapshot 2022-2023

Week 36: September 3, 2023 – September 9, 2023

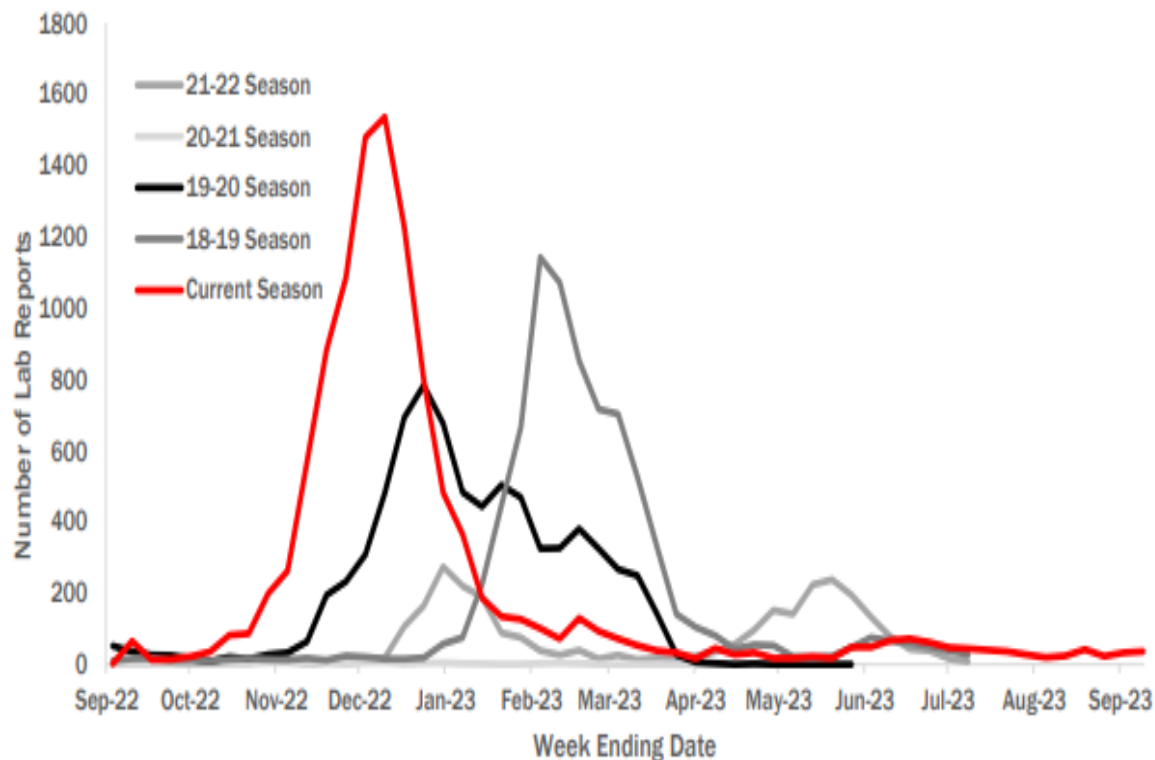


Figure Four: Lab-confirmed flu types

There are two types of flu virus, **Influenza A** and **Influenza B**. Influenza A typically peaks earlier and causes more illness than Influenza B. The current cases we are still seeing are primarily Type A.

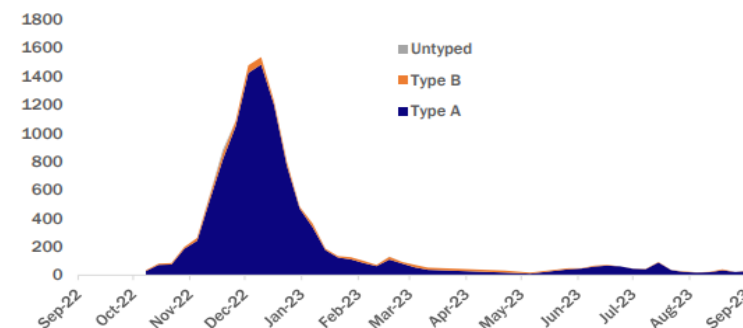


Figure Five: Influenza-like illness (syndromic surveillance)



**Note:** ILI data are reported to CDC's ILINet program by a mixture of primary care providers and emergency departments. This graph shows the proportion of visits where the patient had influenza-like illness out of all visits to the reporting healthcare facility.

Updated 9/12/2023



# A FLU VACCINE CAN TAKE FLU FROM



TO *mild*



Kenai Public Health Center has vaccine available...

- > 6 months of age
- > 65 years of age – High Dose
- Call Kenai Public Health to schedule an appointment
- Everyone is eligible.
- Recommended September – October.

## Flu Vaccine

### What can it do?

Reduce the risk of severe flu-related illness by 40%-60%.

### Who is eligible?

Everyone ages 6 months and older.

### When to get immunized:

Fall, ideally by the end of October.

For more information, consult your healthcare provider.

[https://public.govdelivery.com/accounts/AKDHSS/subscriber/new?topic\\_id=AKDHSS\\_134](https://public.govdelivery.com/accounts/AKDHSS/subscriber/new?topic_id=AKDHSS_134)

#FIGHT FLU





# Respiratory Syncytial Virus.. RSV

Respiratory virus causes seasonal epidemics nationally

RSV is a common respiratory virus causing mild cold-like symptoms but can also affect the lungs.

Those at increased risk for serious illness include infants, older adults  
- RSV is the most common cause of bronchiolitis and pneumonia in children less than 1.

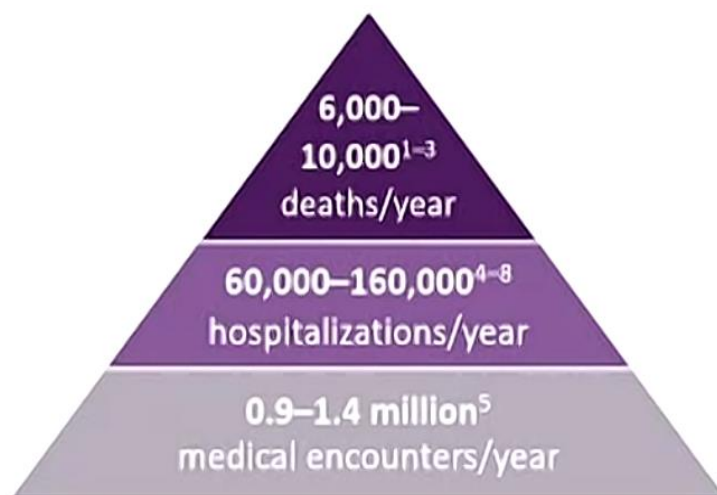
Each  
U.S. O  
Aged  
than  
RSV is  
Assoc  
With.

1.5<sup>3</sup>  
MILLION

520<sup>3</sup>  
THOUSAND

## RSV Causes Substantial Disease in Older Adults

nt



**RSV**  
Adults aged ≥65 years



**Flu**  
Adults aged ≥65 years

1. <https://www.cdc.gov/flu/about/diseases/seasonal/2019-2020.html>
2. <https://www.cdc.gov/flu/about/diseases/seasonal/2019-2020.html>
3. <https://www.cdc.gov/flu/about/diseases/seasonal/2019-2020.html>
4. <https://www.cdc.gov/flu/about/diseases/seasonal/2019-2020.html>
5. <https://www.cdc.gov/flu/about/diseases/seasonal/2019-2020.html>

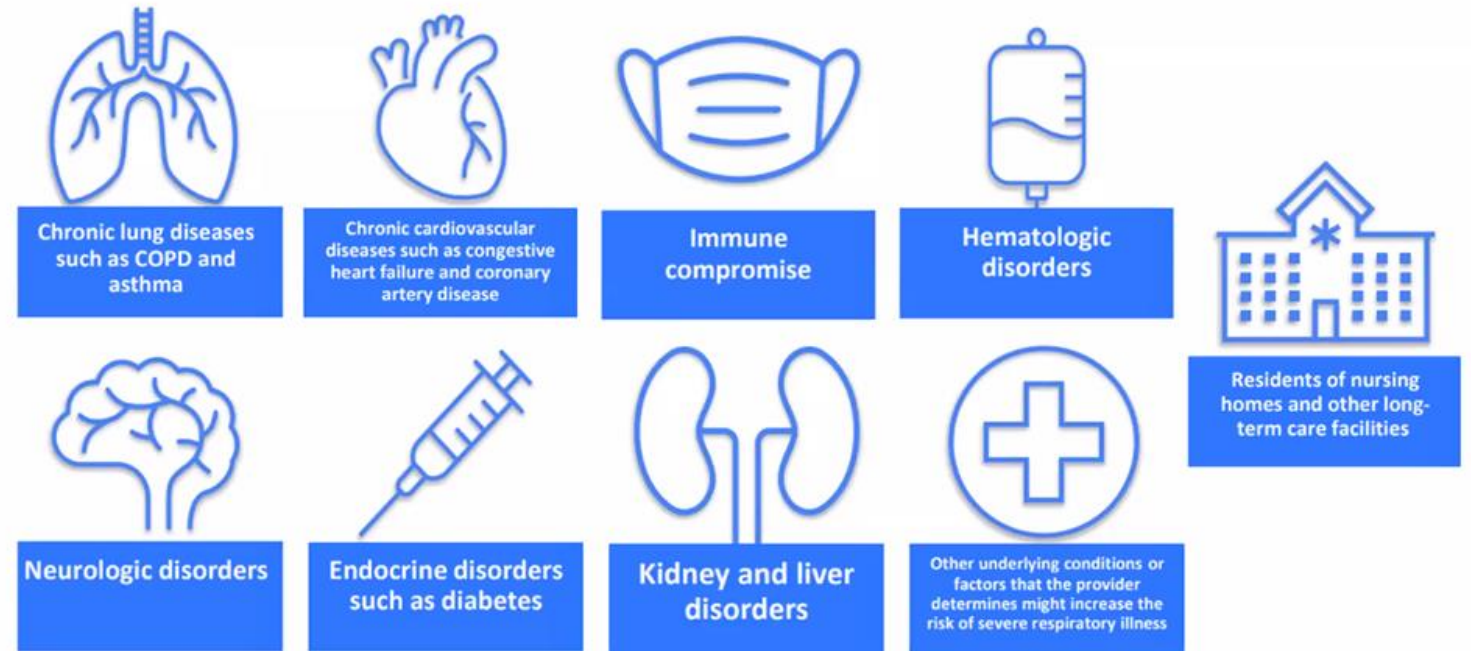
6. <https://www.cdc.gov/flu/about/diseases/seasonal/2019-2020.html>
7. <https://www.cdc.gov/flu/about/diseases/seasonal/2019-2020.html>
8. <https://www.cdc.gov/flu/about/diseases/seasonal/2019-2020.html>
9. <https://www.cdc.gov/flu/about/diseases/seasonal/2019-2020.html>

- Adults at higher risk of RSV disease include people with:

Vaccination is recommended

- Individuals greater than 60... based on shared clinic decision-making is recommended
- During pregnancy Week 32-36
- Infants – Monoclonal antibody

Kenai Public Health expects availability in the near future.



## RSV Immunizations

Abrysvo & Arexvy Vaccines  
Adult



MD Under  
Construction



SCDM

Vaccine indicated for active immunization for the prevention of lower respiratory tract disease (LRTD) caused by respiratory syncytial virus (RSV) in:

### ABRYSVO

Bivalent  
Pfizer

- Individuals 60 years of age and older.
- Pregnant individuals at 32 through 36 weeks gestational age to protect infants from birth through 6 months of age.

### AREXVY

Recombinant  
GSK

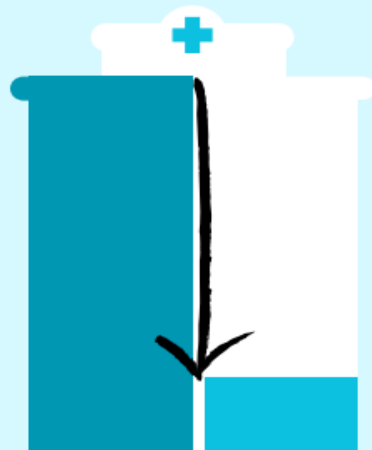
- Individuals 60 years of age and older.



Immunization is recommended just prior to or during the RSV season



WHAT IF  
WE HAD  
**80%  
LESS**  
INFANTS  
WITH RSV  
IN HOSPITALS  
AND CLINICS?



**Nirsevimab (Beyfortus) is a one-shot monoclonal antibody that helps protect infants against severe RSV.** In clinical trials, one dose resulted in a 79% decrease in children needing to seek medical care for RSV (any doctor visit), an 80% decrease in hospitalizations, and a 90% decrease in ICU admissions for the duration of the RSV season (around 5 months).

**Nirsevimab will be available for infants aged 7 months and younger beginning this fall.**

Some children aged 8-19 months will also be eligible, including:

- those with severe immunocompromise
- Alaska Native children
- others at increased risk of severe RSV\*

Side effects in clinical trials were minimal and comparable to other vaccines. No severe allergic reactions were reported. Like all vaccines, nirsevimab should be given in a setting equipped to manage severe allergic reactions.

\*Children with chronic lung disease of prematurity who required medical support (chronic corticosteroid therapy, diuretic therapy, or supplemental oxygen) any time during the 6-month period before the start of the second RSV season, children who are severely immunocompromised, children with cystic fibrosis who have manifestations of severe lung disease (previous hospitalization for pulmonary exacerbation in the first year of life or abnormalities on chest imaging that persist when stable) or have weight-for-length that is <10th percentile, and American Indian and Alaska Native children (note that this is a new group for whom second-season prophylaxis is recommended).



# Covid-19 Vaccine *Monovalent*

- Variant XBB1.5
  - Available for children > 6 months and adults
- Available at Kenai Public Health Center in the near future
  - Pfizer 5 through 11 years
  - Pfizer 12+
  - Moderna 12+
  - Moderna 6M-11YR (on order)
  - Available at local pharmacies
  - Bridge program for the uninsured

<https://www.vaccines.gov/>

*The time to  
Vaccinate is  
now...*

**Vaccinations are the most effective tools to safeguard against severe disease.**

- **COVID-19 Vaccine:** Updated COVID-19 vaccine recommended by CDC for all persons 6 months and older. Immunocompromised people may receive additional doses.
- **Flu Vaccine:** Recommended for persons 6 months and older; people 65 and older should get a higher dose, recombinant, or adjuvanted flu vaccine.
- **RSV Vaccine for Older Adults:** Adults 60 and older with hematologic disorders like sickle cell disease may benefit from RSV vaccination.
- **RSV Immunization to Protect Infants during RSV Season:**
  - **Maternal RSV vaccination** at 32-36 weeks of gestation.
  - OR -----
  - **Nirsevimab** (RSV immunization)
    - Infants younger than 8 months during – or entering – RSV season.
    - Some children 8 through 19 months with increased risk for severe RSV.

<https://vimeo.com/645821861>

# Alaska Bridge Access Program...

Partnered with CDC

## Where can someone get a no-cost COVID-19 vaccine through the Bridge Access Program?

**Local health providers**  
partnered with state and  
local health departments



**HRSA-supported health centers** partnered with  
state and local  
immunization programs



Select **pharmacies:**

**CVS, Walgreens,  
and eTrueNorth**



Visit [vaccines.gov](https://www.vaccines.gov) to find a provider  
that offers no-cost COVID-19 vaccines  
through the Bridge Access Program.



**Community events or pop-up sites with these groups**

# DOCKET...

- At your fingertips
  - A new APP you can download to your phone
  - Direct access to your Alaska VakTrak Immunization record
    - Share official vaccination record..
      - School
      - Physician
      - Travel



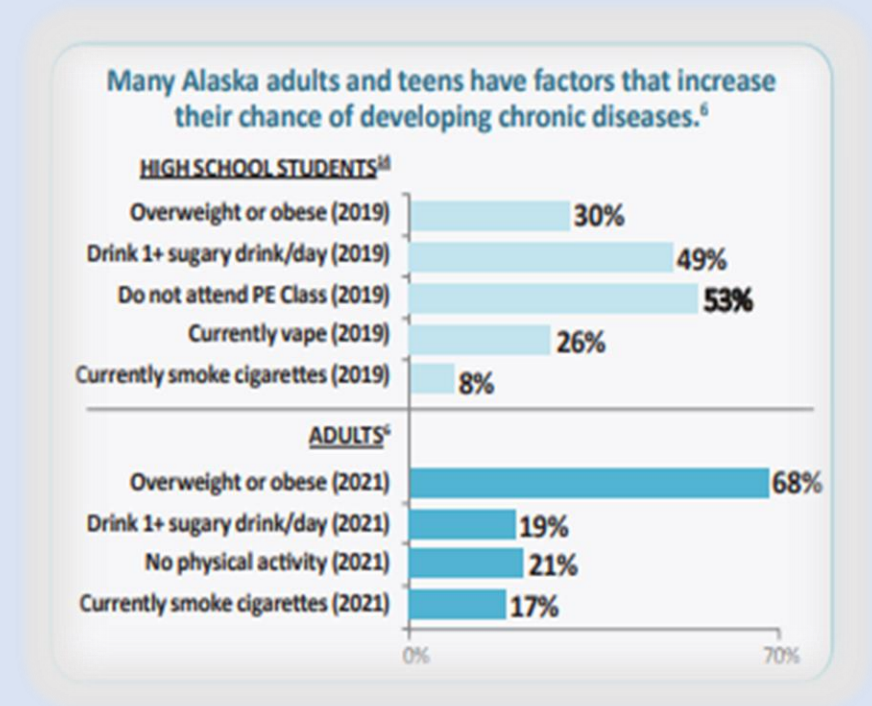
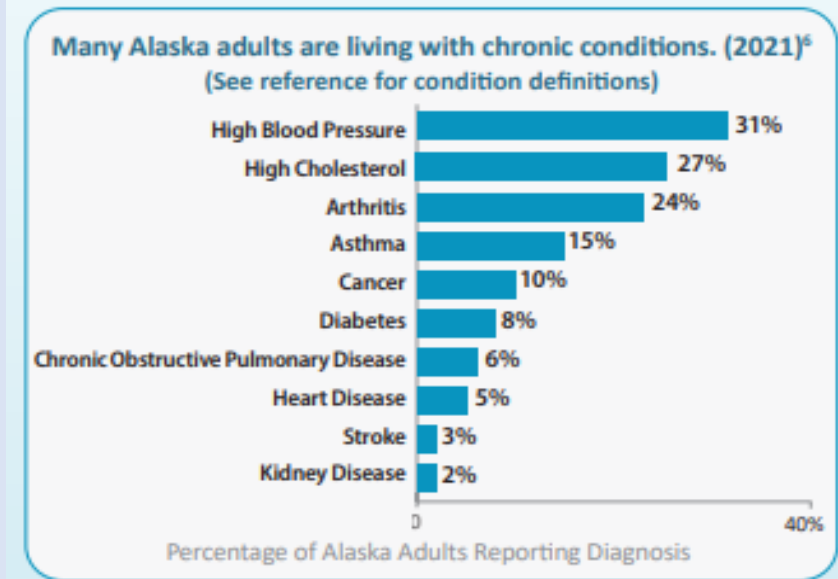


# Alaska Chronic Disease Facts

## 2023 Brief Reports Highlights

### Chronic diseases

- *Most common and costly health problems*
- *Preventable*  
*Ex. Obesity, cancer, heart disease, diabetes, dementia*
- *Shorter life expectancy*
- *In 2021 there were 1,421 “excess deaths” in Alaska due to Covid-19.*



# Fresh Start

Are you ready for change...

<https://health.alaska.gov/dph/Chronic/Pages/freshstart/default.aspx>

<https://health.alaska.gov/dph/Chronic/Pages/freshstart/default.aspx>

[alaska.gov/](https://health.alaska.gov/dph/Chronic/Pages/freshstart/default.aspx)

## What can we do....

- Individual level
  - Be an active participant in your health
    - Physical exercise,
    - Follow a healthy diet
    - Avoid Tobacco (educate on vaping)
    - Avoid sugary drinks
    - Sign up for *Fresh Start*....



Free Programs for Better Health

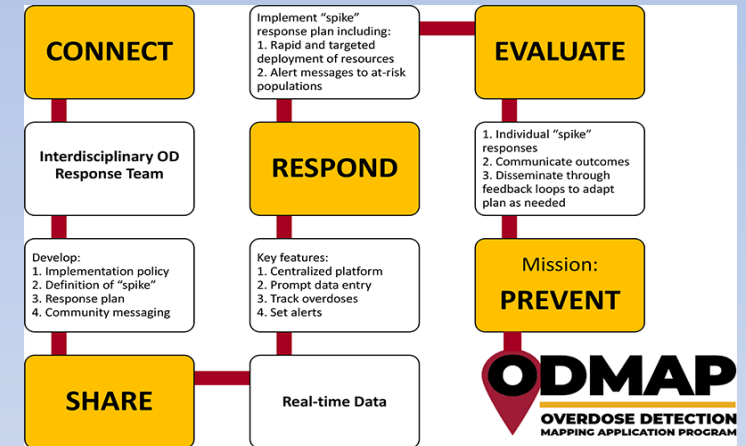
doh.freshstart@alaska.gov



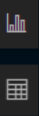
# ODMAP

## Overdose Mapping and Application Program

- Developed by HIDTA public health analysts  
(High Intensity Drug Trafficking Area)
- A system designed to provide real time data to relevant stakeholders regarding overdoses in the community.
- Provides Spike Response Framework



- Spike alerts can be set-up to notify an agency by email, if the total overdoses in an area exceeds a pre-determined threshold within a 24-hour period.
- Spike alerts can be established for an agency's own county, as well as nearby or neighboring counties.
- By establishing spike alerts for nearby counties, the program can serve as an early warning feature; if a spike in overdoses occurs in a neighboring area, officials can anticipate a spike in their area and prepare.



Apply Filters Heatmap: Off Clear Filters

Fatal?

☐ Both Fatal and Non-Fatal

☐ Fatal

☐ Non-Fatal

Naloxone Administered?

☐ Show All Naloxone Incidents

☐ Yes

☐ No

☐ Administration Unknown

Select ZIP Codes

Primary Suspected Drug is any of:

Please note that primary suspected drug is an optional field and is not always entered in Level 1. Suspected drugs are based on field reports and not on official toxicology.

Select Agency

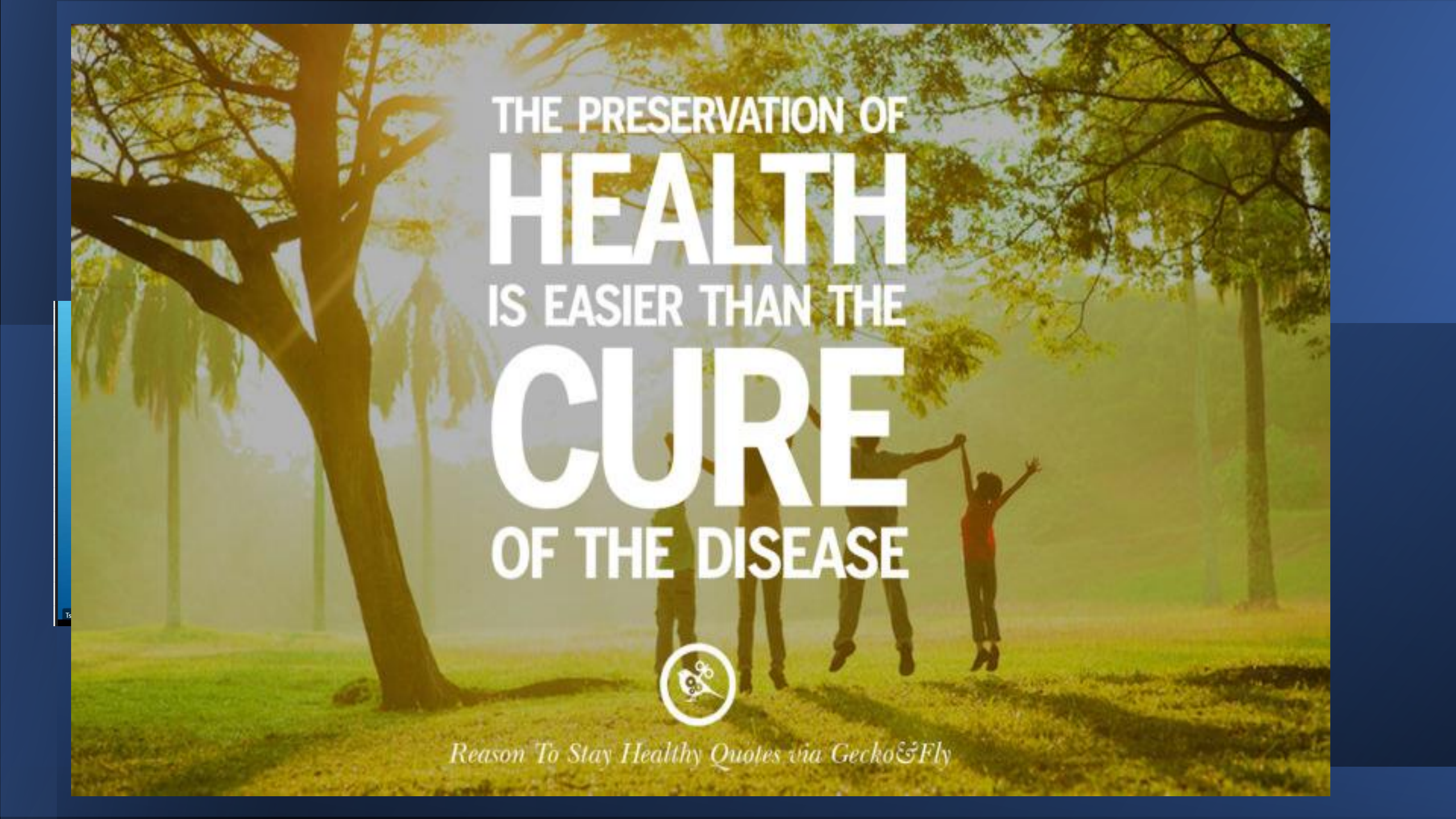
Zoom to

Suspected Overdose 6/25/2023, 1:45 AM

Incident Type	Fatal: No Naloxone
Incident Date/Time	6/25/2023, 1:45 AM
OD_GUID	{E85DAAB0-5551-4072-850E-2F2FD88DC281}
County	Kenai Peninsula
State	AK
Zip Code	99669
Agency Name	Alaska HIDTA
Police District	
Case Number	AK23064730

Total Suspected Overdoses:	89
Suspected Fatal Overdoses:	2
Naloxone:	6



A group of people are jumping in a grassy park area. A large, leafy tree is on the left side of the frame. The background is a soft-focus view of a park with more trees. The entire image has a warm, golden-yellow tint. Overlaid on the center is a quote in white text.

THE PRESERVATION OF  
**HEALTH**  
IS EASIER THAN THE  
**CURE**  
OF THE DISEASE



*Reason To Stay Healthy Quotes via Gecko & Fly*