

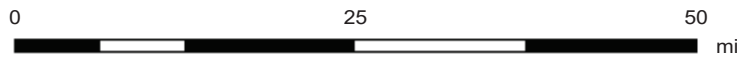
Legend

Regulatory Zoning KPB 21.18 Anadromous Waters

- Managed
- Unsubstantiated
- Exempt

Proposed Changes

- Managed (removed)
- Proposed (new)
- Proposed (re-substantiation)



NOTE: Every reasonable effort has been made to ensure the accuracy of these data. However, by accepting this material, you agree that the Kenai Peninsula Borough assumes no liability of any kind arising from the use of this data. The data are provided without warranty of any kind, either expressed or implied, including but not limited to time, money or goodwill arising from the use, operation or modification of the data. In using these data, you further agree to indemnify, defend, and hold harmless Kenai Peninsula Borough for any and all liability of any nature arising from the lack of accuracy or correctness of the data, or use of the data.






Legend

Regulatory Zoning

KPB 21.18 Anadromous Waters

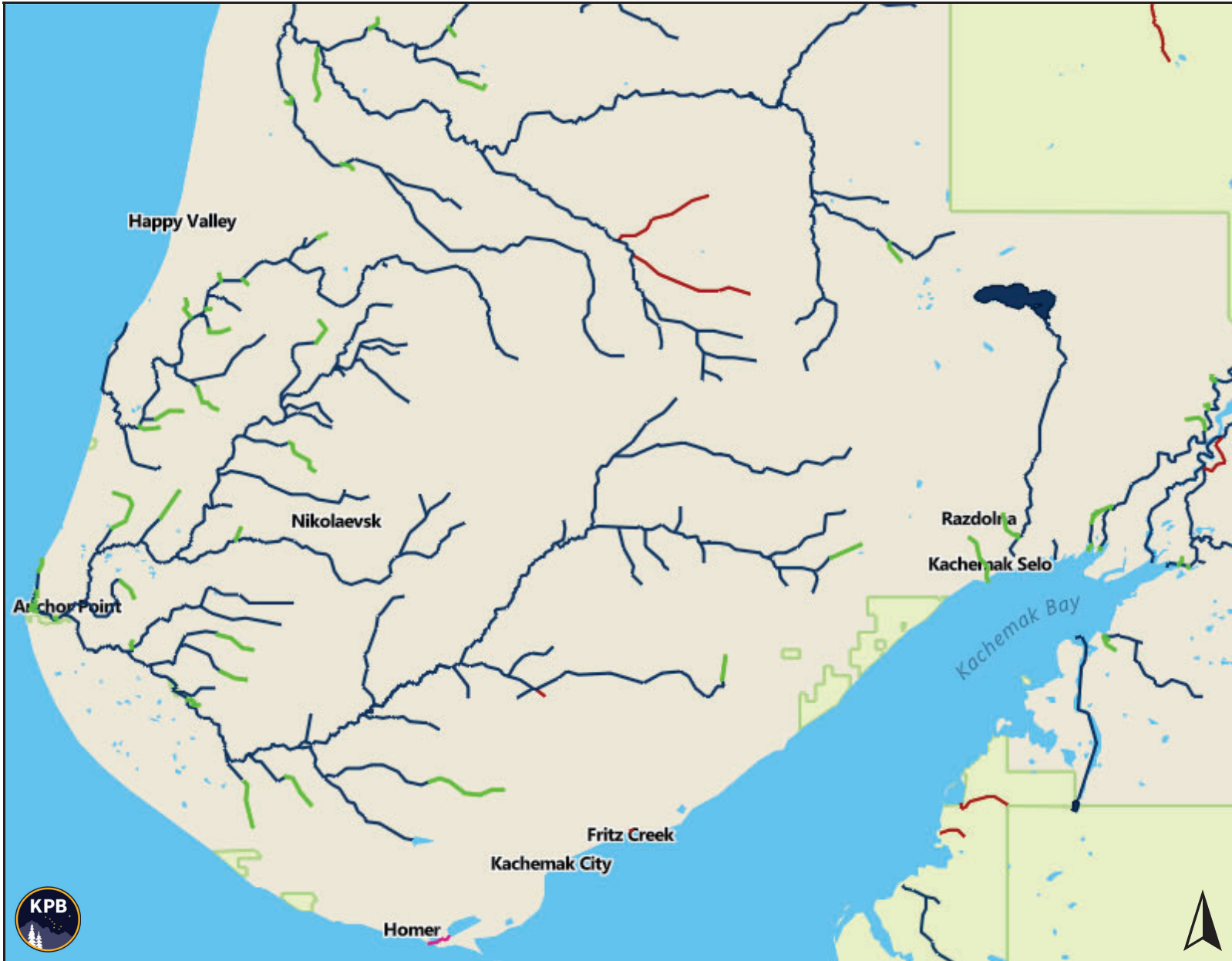
-  Managed
-  Unsubstantiated
-  Exempt

Proposed Changes

-  Managed (removed)
-  Proposed (new)
-  Proposed (re-substantiation)



NOTE: Every reasonable effort has been made to ensure the accuracy of these data. However, by accepting this material, you agree that the Kenai Peninsula Borough assumes no liability of any kind arising from the use of this data. The data are provided without warranty of any kind, either expressed or implied, including but not limited to time, money or goodwill arising from the use, operation or modification of the data. In using these data, you further agree to indemnify, defend, and hold harmless Kenai Peninsula Borough for any and all liability of any nature arising from the lack of accuracy or correctness of the data, or use of the data.






Legend

Regulatory Zoning
KPB 21.18 Anadromous Waters

-  Managed
-  Unsubstantiated
-  Exempt

Proposed Changes

-  Managed (removed)
-  Proposed (new)
-  Proposed (re-substantiation)



NOTE: Every reasonable effort has been made to ensure the accuracy of these data. However, by accepting this material, you agree that the Kenai Peninsula Borough assumes no liability of any kind arising from the use of this data. The data are provided without warranty of any kind, either expressed or implied, including but not limited to time, money or goodwill arising from the use, operation or modification of the data. In using these data, you further agree to indemnify, defend, and hold harmless Kenai Peninsula Borough for any and all liability of any nature arising from the lack of accuracy or correctness of the data, or use of the data.



Legend

Regulatory Zoning

KPB 21.18 Anadromous Waters

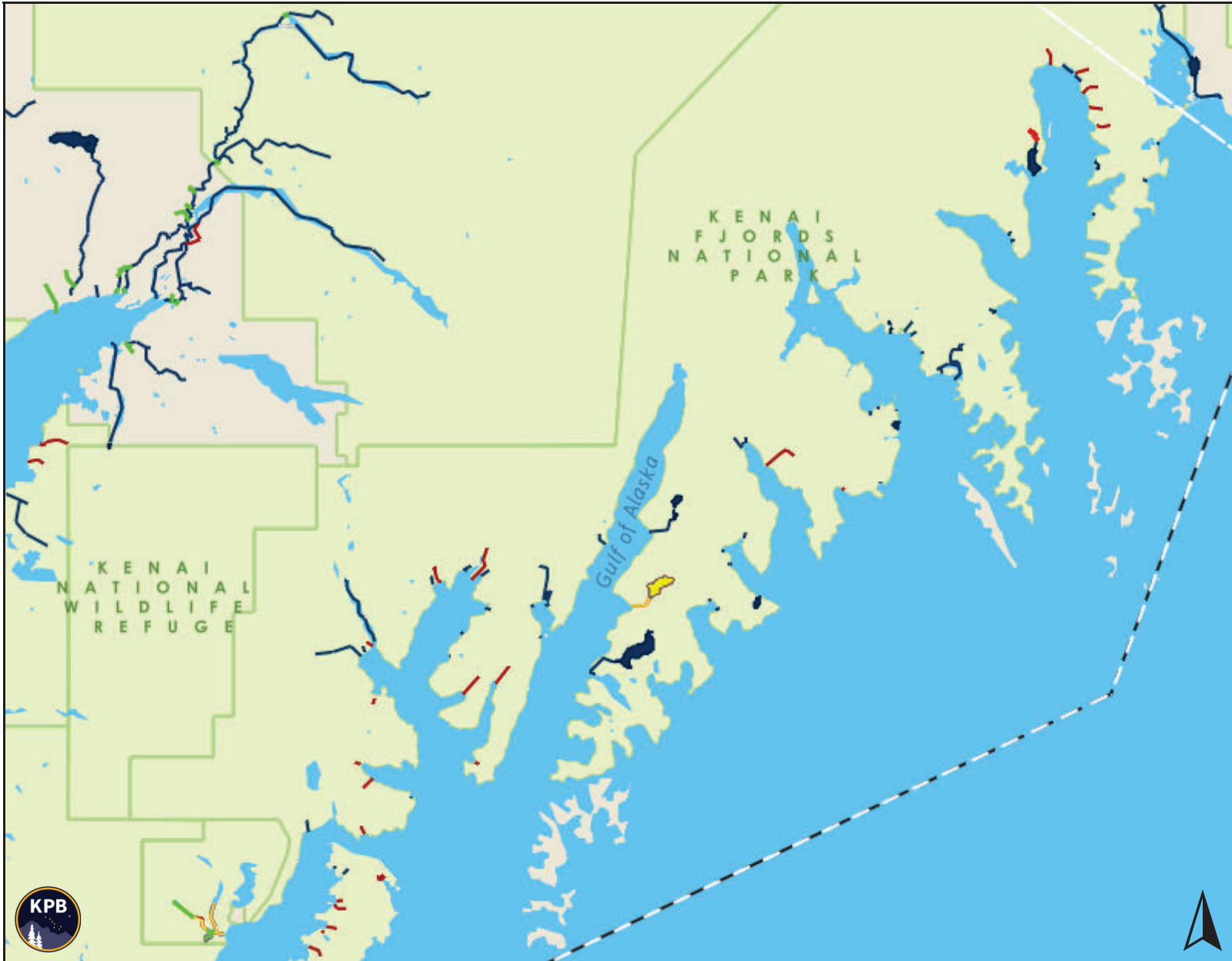
- Managed
- Unsubstantiated
- Exempt

Proposed Changes

- Managed (removed)
- Proposed (new)
- Proposed (re-substantiation)



NOTE: Every reasonable effort has been made to ensure the accuracy of these data. However, by accepting this material, you agree that the Kenai Peninsula Borough assumes no liability of any kind arising from the use of this data. The data are provided without warranty of any kind, either expressed or implied, including but not limited to time, money or goodwill arising from the use, operation or modification of the data. In using these data, you further agree to indemnify, defend, and hold harmless Kenai Peninsula Borough for any and all liability of any nature arising from the lack of accuracy or correctness of the data, or use of the data.



Legend

Regulatory Zoning
KPB 21.18 Anadromous Waters

- Managed
- Unsubstantiated
- Exempt

Proposed Changes

- Managed (removed)
- Proposed (new)
- Proposed (re-substantiation)



NOTE: Every reasonable effort has been made to ensure the accuracy of these data. However, by accepting this material, you agree that the Kenai Peninsula Borough assumes no liability of any kind arising from the use of this data. The data are provided without warranty of any kind, either expressed or implied, including but not limited to time, money or goodwill arising from the use, operation or modification of the data. In using these data, you further agree to indemnify, defend, and hold harmless Kenai Peninsula Borough for any and all liability of any nature arising from the lack of accuracy or correctness of the data, or use of the data.