

City of
Soldotna

RECREATION AND TRAILS

MASTER PLAN

City of Soldotna Recreation & Trails

MASTER PLAN

January 2014

Prepared For:



City of Soldotna
Department of Parks and Recreation



Prepared By:



CASEY PLANNING & DESIGN
Landscape Architecture on the Kenai Peninsula
Soldotna, Alaska

and



Anderson Land Planning
Sitka, Alaska

**CITY OF SOLDOTNA
RECREATION AND TRAILS MASTER PLAN**

January 8, 2014

**Adopted by Ordinance xxxx
Xx xx, 2014**

Prepared by

**Casey Planning & Design
Anderson Land Planning**

for the

**City of Soldotna
Parks and Recreation Department**

ACKNOWLEDGEMENTS

City Administration and Staff

Dr. Nels Anderson	Mayor, City of Soldotna
Mark Dixon	City Manager
Andrew Carmichael	Director, Department of Parks and Recreation
Carmen Triana	Assistant Director, Department of Parks and Recreation
Stephanie Queen	Director, Department of Planning & Community Development
Scott Sundberg	Manager, Maintenance Department, City of Soldotna
Kyle Kornelis	Director, Department of Public Works

Steering Committee

Nancy Eoff	Soldotna City Council
Marilyn Kebschull	Soldotna Planning & Zoning Commission
Penny Vadla	Soldotna Parks & Recreation Advisory Board
Dana Cannava	Soldotna Parks & Recreation Advisory Board
Shawn Hutchings	Community Citizen
Guy Hayes	Community Citizen
Charalambos Asimakopoulos	Community Citizen

City Council

John Czarnecki	Meggean Bos
Brenda Hartman	Paul Whitney
Dale Bagley	Linda Murphy
Regina Daniels	
Nancy Eoff	Keith Baxter
Pete Sprague	

Planning & Zoning Commission

Colleen Denbrock	Chair
Brandon Foster	
Meggean Bos	
Marilyn Kebschull	
Paul Whitney	
Stephanie Kobylarz	
Darren Bearup	

Parks & Recreation Advisory Board

Dana Cannava	Chair
Penny Vadla	
Irma Peterson	
Jim Delker	
Darren Bearup	

Consultants

Nancy Casey	Casey Planning & Design	Soldotna, AK
Monique Anderson	Anderson Land Planning,	Sitka, AK
Mark Blanning	Winco-Corthell-Bryson	Kenai, AK
Gary Greenberg	Alaska Map Company	Kenai, AK

ACKNOWLEDGEMENTS

Stakeholder Organizations

NAME	ORGANIZATION
Hans Rinke	AK D.N.R. Division of Forestry
Jack Blackwell	AK D.N.R. Division of Parks
Brian Gabriel	AK Department of Transportation
Pat & Myrna Cowen	Birch Ridge Golf Course
Kim Lea	Boys & Girls Club
Rick Northey	Caribou Hills Cabin Hoppers
Jan Johnson	Central Peninsula Hospital
Lee Young	Connections
Connie Hocker	Friends of Aspen Dog Park
Mandy Bernard	Kachemak Heritage Land Trust
Janet Schmidt	Kenai National Wildlife Refuge
Andy Loranger	Kenai National Wildlife Refuge
John Morton	Kenai National Wildlife Refuge
Max Best	Kenai Peninsula Borough Planning/Environmental
John Czarnecki	Kenai Peninsula Borough Planning/Environmental
Alan Borass	Kenai Peninsula College
Gary Turner	Kenai Peninsula College
Clint Hagel	Kenai Peninsula Hockey Association
Jimmy Love	Kenai Peninsula Soccer Club
Mike Fenton	Kenai River Professional Guide Association
Ricky Gease	Kenai River Sportfish Association
Jocelyn O'Conner	Kenai Watershed Forum
Mindy Morning	Peninsula Sled Dog & Racing Association
Jill St. Clair Garnett	Peninsula Sled Dog & Racing Association
Suzanne Applebee	Pony Club of America
John Pothast	Redoubt Elementary School
Scott Sundberg	Rusty Blades
Jason Kempf	Rusty Blades
Michelle Graves	Soldotna Chamber of Commerce
Terry Diamond	Soldotna Elementary School
Suzanne Applebee	Soldotna Equestrian Association
Matt Johnson	Soldotna High School Sports
Jerry Holmgard	Soldotna Little League
Guy Hayes	Soldotna Little league
Mo Sanders	Soldotna Montessori
Marcus Mueller	Soldotna Rotary
Matthew Pyhala	Soldotna Rotary
Carmen Triana	Room User Groups
Krista & Josh Schooley	The Tribe
John Mohorcich	Tsalteshi Trails Association
Bill Holt	Tsalteshi Trails Association
Adam Reimer	Tsalteshi Trails Association

Individual Stakeholders

Amy Adcox	Dawni Giugler	Steve Manley	Kellie Trolz
Gaeden Anes	Rob Guenther	Ryley McAtee	Penny Vadla
David Barlow	Tracy Hedlund-Smith	Debbie Michael	Tristan Warner
Andrew Barlow	Shelby Henderson	Mitch Michaud	Jan Wallace
Dale Bagley	Sara Hondel	Mindy Morning	Joel Williams
Jenny Beyer	Carrie Howard	Peggy Mullen	Jeff Williams
Hunter bourgeois	Linda Hutchings	Marge Mullen	Jennifer Yeoman
Dana Cannava	Becky Hutchinson	Morgan Nelson	
Mike Crawford	Abi Jalhits	Brodi Perkins	
John Czarnecki	Tristan Jenkins	Isaac Rodman	
Victoria Denison	Barb Jewel	Lela Rosin	
Kristi Edwards	Donny Joachom	Jacob Schooley	
Danica Farrar	Balyar Joachom	Matthew Smith	
Lacie Farrar	Kathy Keira & Bailey	Pete Spraque	
Marcus Forkner	Sara Klobucor	Jason Steadman	

TABLE OF CONTENTS

Acknowledgments

Chapter 1 – Introduction

<i>Mission & Vision, Setting & History</i>	1
<i>Previous Plans</i>	2
<i>Plan Components, Community Involvement Summary</i>	3

Chapter 2 – Inventory: State of Soldotna Park System

<i>Parks, Trails and Recreation in Soldotna Today</i>	4
<i>Quick Facts</i>	4
<i>Overview</i>	5
<i>Site and Facility Assessment</i>	6
<i>Program Assessment</i>	8
<i>Funding Picture</i>	9

Chapter 3 –Community Needs

<i>Methodology</i>	10
<i>Public Survey and Teen Survey Results</i>	11
<i>Demographics Analysis</i>	16
<i>Recreation Trends Analysis</i>	17
<i>Summary Conclusions for Recreation Trends</i>	20
<i>Park Classification Overview</i>	21
<i>Level of Service Standards</i>	22
<i>Key Findings</i>	24

Chapter 4 – Soldotna Park System Recommendations

<i>Methodology</i>	26
<i>Guiding Principles</i>	27
<i>Recommendations - OPERATIONAL</i>	30
<i>Recommendations - CAPITAL IMPROVEMENTS: PARKS & FACILITIES</i>	33
<i>Recommendations - CAPITAL IMPROVEMENTS: PEDESTRIAN CONNECTIVITY</i>	37

Chapter 5 – Facility Profiles

<i>Park Profiles</i>	40
<i>Schools and other Facilities</i>	59
<i>Trail Profiles</i>	64

Chapter 6 – Implementation

<i>5 Year Strategic Action Plan</i>	70
<i>Implementation Prioritization – IMMEDIATE</i>	71
<i>Implementation Prioritization – SHORT TERM</i>	73
<i>Implementation Prioritization – MID TERM</i>	75

TABLE OF CONTENTS

Maps

Soldotna Recreation and Trails Master Plan - Overall Plan Map

Soldotna Recreation and Trails Master Plan - Core Area Map

Appendix

A: Recreation Inventory Table

B: Stakeholder Roadshow Notes

C: Recreation Survey Summary

D: Steering Committee Notes

E: GIS data model

Chapter 1 - Introduction

Mission and Vision

The mission at the City of Soldotna Parks and Recreation Department is:

“to create and operate a diverse parks and recreation program which provides superior recreation, leisure and community services to enrich the quality of life and promote public well being for residents and visitors alike.”

The **City of Soldotna Recreation and Trails Master Plan** builds on this mission and sets out a framework for clear action for what residents have said are their priorities. This collective vision for Soldotna centers on a quality recreation and parks system for the future through:

The Kenai River—a strong recognition of the value of and access to the Kenai River as a core component of the Soldotna park system, including trails, fishing and camping;

Year Round Activity—recognition that Soldotna residents pride themselves on embracing winter with strong interests in more outdoor orientated winter activities like family skating, walking, skiing and snowshoeing.

Flexibility—a need for a flexible system to respond to the new economic growth and retain families with children.

Variety—the desire for the system to continue to offer the variety of choices, both within the city and in the region, for recreational activities of all types, for all ages and abilities, and in all weather conditions.

Setting & History

Soldotna is located on the Kenai River in the central part of the Kenai Peninsula and has a rich cultural history dating back over 1000 years, including Alaska Native settlements, Russian immigrants, homesteaders, road and bridge builders, oil workers, and tourists.

Today, the City of Soldotna is home to 4,200 residents, the Kenai River Campus of the University of Alaska’s Kenai Peninsula College, a growing medical district, and an airport, all within city limits.

Parks & Recreation is a public service that has provided a variety of neighborhood parks, campgrounds, trails, river access, ball fields, a rodeo grounds and a sports center for 30 years. The greater Soldotna community actively participates in outdoor recreation year-round, with more and more opportunities available each year.



Figure 1. City of Soldotna location on the Kenai Peninsula

Previous Plans

Thirty years of steady improvements have provided a balanced mix of recreation opportunities inside and beyond city limits. Residents have worked together to produce several plans for the growth of Soldotna with the most recent documents pertinent to this Master Plan as follows:

- *Mainstreet Alaska*, Soldotna 1995
- *Soldotna Trails and Walkways Plan*, 1996
- *Roads & Trails Master Plan*, 2001
- *Envision Soldotna 2030, Comprehensive Plan*, 2011



Figure 2. City of Soldotna Comprehensive Plan

Many goals and recommendations of the planning documents have been accomplished and have resulted in a growing, healthy culture of recreation in the Soldotna area community. With the addition of each of these major recreation facilities such as the Unity Trail, the Soldotna Sports Center, and the Tsalteshi Trails system, came a growth in use and activity.

Comprehensive Plan Parks and Recreation Goals

Soldotna's Comprehensive Plan, *Envision Soldotna 2030*, adopted May 2011, provides the building blocks for this current effort of recreation and trails planning through many of its community goals:

1. Develop a Recreation Master Plan for Soldotna that evaluates demand, inventories and documents available recreation resources, establishes a level of service (LOS), and develops a list of recommended improvements to meet the LOS for each type of recreation opportunity and facility.
2. Evaluate the potential for a connected greenway trail system that spans the City, from Slikok Creek to Centennial Park, to Soldotna Creek Park, to Swiftwater Park and beyond.
3. Provide for critical connections and missing links as identified in the 2001 Roads and Trails Master Plan.
4. Consider expanding the Adopt-a-Park program to include adoption of trails for maintenance by volunteer groups and other organizations in order to support street and trail cleaning and maintenance in all seasons.
5. Consider the expansion of boardwalks along the river as proposed in the 2001 Roads and Trails Master Plan.
6. Consider the potential for a snow machine corridor or recreation area within the city.
7. Incorporate recreation facilities into the City's economy.
8. Encourage the use of school facilities during the off-season to provide for activities such as summer community programs, adult recreation and outdoor education.
9. Encourage residents to use the existing City parks.
10. Invest in outreach and improvements geared toward youth

Economic Development - "Identify opportunities and plan for the Kenai River to play a prominent role in the expansion of economic development opportunities..." and "Encourage development of off-season tourism based on outdoor recreation."

Neighborhood - "Encourage active neighborhoods that incorporate activities for people of all ages", "Provide for increased connectivity throughout Soldotna for both vehicular and non-motorized access."

Environment - "Evaluate the carrying capacity of the Kenai River to determine whether expanded boardwalk facilities can be supported, and what their impact would be."

Arts, Education and Culture - "Encourage rotating local art displays in public areas, such as Soldotna Creek Park, City Hall, the library and other parks."

Transportation - "Improve connectivity to the surrounding communities." "Address the safety and efficiency of non-motorized circulation near and across the Sterling Highway and the Kenai Spur Highway."

Introduction

MASTER PLAN

Master Plan Components

The scope of this Master Plan includes all City of Soldotna parks, recreation areas, trails and streets, as well as recreation facilities owned by others, including some located outside city limits. In an effort to improve collaboration, maximize resources, and remain competitive, this plan includes the community's vision and recommendations for all recreation facilities, regardless of ownership. Recommendations address facilities, operations, funding, programming and partnerships.

Plan Components & Function

Chapter 2	State of the Soldotna Parks System	The physical inventory of the existing park system and programs provided to the community as well as an existing funding picture.
Chapter 3	Community Needs	Needs of the community including demographic projections, recreation trends and recommended levels of service (LOS).
Chapter 4	Recommendations	Community vision and goals including guiding principles, short & long term objectives and policies required to implement the Plan.
Chapter 5	Facility Profiles	A profile of the history, physical components, and recommendations by park or facility.
Chapter 6	Implementation	Identifies strategic actions the City of Soldotna should take in the first five years to begin implementing the <i>Soldotna Recreation and Trails Master Plan</i> .

Community Involvement Summary

Development of this plan included an extensive public process. A Steering Committee was developed to help oversee the process with guidance also from the Parks and Recreation Advisory Commission. Specifically, the public involvement process included:

Public Open House Events: Events provided for the public to ask questions, discuss issues, and provide input in an informal setting.

Recreation Round-Up: Large public event to celebrate recreation and build enthusiasm for the project. Attendees included over 500 people, the majority families and children.

Stakeholder 'Roadshow': Meetings, phone calls, presentations and discussions with stakeholders over a long period of time.

Steering Committee Meetings: 10-person Steering Committee times to review and comment on the Master Plan.

Surveys: A public on-line survey was completed by volunteers over the course of 5 weeks. A Teen Survey was completed by nearly all students in 7-12 grades.

Presentations: Several updates and presentations were given to the Parks & Recreation Advisory Commission, Planning & Zoning Commission, City Council, Soldotna Rotary, and the Soldotna Chamber of Commerce.



Figure 3. Recreation Roundup Flyer

Chapter 2 - Inventory State of Soldotna Park System

Parks, Trails and Recreation in Soldotna Today

There are 14 parks and facilities on a total of 464 acres and over 50 miles of sidewalks and trails owned and maintained by the City of Soldotna. This system includes neighborhood, community and special use parks (e.g. campgrounds), as well as a major recreation destination - the Soldotna Sports Center. Additionally, Soldotna boasts a skateboard park, two large regional campgrounds, nearly two miles of elevated boardwalks along the Kenai River, and the 15 mile Unity Trail.

The City of Soldotna is an outdoor recreation hub of the Kenai Peninsula and annually attracts tourists to the world famous Kenai River. Many of the city parks provide critical access to the river with facilities such as boat launches, campgrounds, elevated boardwalks and river stairs. In addition to outdoor adventure, Soldotna has traditional children's parks, ball fields and picnic areas that serve residents. Overall, the Soldotna is an active community that appreciates high quality park and recreation sites, facilities and services.

Quick Facts

The City of Soldotna manages and maintains 14 parks and recreation sites, totaling 464 acres; nearly 20 miles of trails and boardwalks; and approximately 2 miles of landscaping in city road rights-of-way.

- The recreation assets of the City of Soldotna also include many significant amenities within the community such as the Soldotna Sports Center/Ice Arena, Centennial and Swiftwater Campgrounds, Soldotna Creek Park and Soldotna Community Memorial Park.
- The parks, trails and recreation sites are financially supported by the City of Soldotna, which has just over 4,000 residents. These assets serve the greater Soldotna area (including Kalifornsky, Kasilof, Kenai, Ridgeway, Soldotna and Sterling) with a total estimated population of 27,301. (*U.S. Census Bureau, 2010*)
- The summer tourist season contributes heavily to park use bringing travelers to Soldotna, primarily for fishing on the world famous Kenai River which is accessible via many of the city parks. The two city-owned campgrounds served over 6,000 nights of camping and launched over 1,300 boats in the peak season of July 2010. (*Popular Annual Financial Report, City of Soldotna, FY2011*)
- The Parks and Recreation Department within the City of Soldotna is responsible for the operations of the recreation system and had an annual operating budget of \$1.35 million in fiscal year 2012. (*City of Soldotna Fiscal Year 2014 Operating Budget*)
- The average city budget expenditure amounts to approximately \$325/per city resident for parks and recreation. However, many city facilities were designed to serve the greater Soldotna area so the average expenditure can be adjusted to \$50 per person to more accurately reflect the situation.

Overview of the Existing City of Soldotna Recreation and Trails System

General Fiscal Year 2013	City of Soldotna
Total Full-Time Employees (part time 9 - 15 employees)	8
Total Parks and Facilities	14
Total Park Acreage	464.5
Total Trail, Bike Lane & Sidewalk Mileage	52.6
Average Annual P&R Budget Allocation per city resident/Greater area*	\$ 325/\$50
Acres of City Park Land per 1,000 Residents	111.5 acres
Acres of City Park Land per 1,000 Residents <u>including</u> School grounds	150 acres
Acres of City Park Land per 1,000 Residents of the Greater Soldotna Area***	17 acres

City of Soldotna Parks	Qty	Acreage
Neighborhood Use Parks	5	17.1
Community Use Parks	3	38.6
Special Use Parks	5	305.8
Open Space Areas	1	103
Total City Parks	14	464.5
School	6	160.1
Total Parks in Soldotna	20	624.6



Figure 4. Soldotna Skatepark

City of Soldotna Trails	Qty	Mileage
Multi-Use Paved Trails		15.1
Natural Surface Trails		2.0
Boardwalks		2.3
River Access Stairs	52	
Total Trails		19.1
Bike Lanes		13.5
Sidewalks		20
Total Trails, Bike Lanes & Sidewalks		52.6

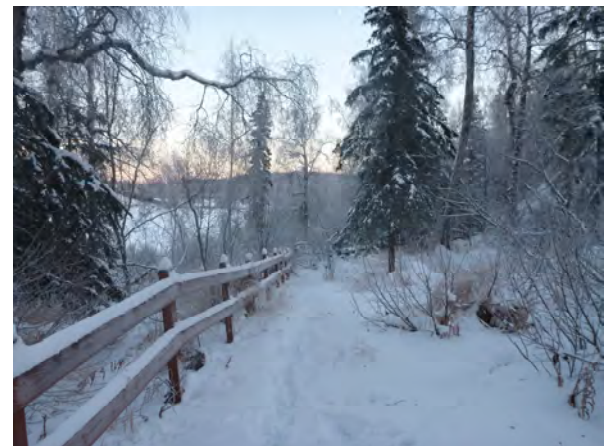


Figure 5. Centennial Park trail in winter

Table 1. Overview of existing Soldotna Recreation & Trails System

* Fiscal Year 2012 Parks & Recreation Fund Annual Budget is \$1,353,726

** City of Soldotna population estimate is 4,163 (2010 U.S. Census Bureau)

*** Greater Soldotna Area population estimate is 27,301 (2010 U.S. Census Bureau) This number includes the communities of Kalifornsky, Kasilof, Kenai, Ridgeway, Soldotna and Sterling

Inventory

MASTER PLAN

Site and Facility Assessment

From January through April 2013, the Consultant Team performed an assessment of the sites and facilities of the City of Soldotna. These assessments establish a base-line understanding and reference point of the existing conditions of sites and facilities in the system from which recommendations of the *Soldotna Recreation and Trails Master Plan* can be developed.

Methodology

The condition of facilities and assets evaluated and assessed by the Consultant Team are noted in the profile sheets associated with each park in Chapter 5 - Facility Profiles. Conditions were rated using a differential scale of excellent, good, fair, or poor. A description of conditions that are attributed to each of these assessment findings are provided in the next table.

Scale of Conditions	
Assessment Finding	General Description
EXCELLENT	Facilities/amenities are in excellent condition and feature little or no maintenance problems noted. Facilities do not feature any major design issues that contribute to diminished use or maintenance.
GOOD	Facilities/amenities are in good condition and feature only minor maintenance problems. Generally, most maintenance issues appear to be the result of age and /or heavy use. Facilities may only feature minor design issues that contribute to diminished use or maintenance (i.e. drainage, utilities, etc.)
FAIR	Facilities/amenities are in fair condition and indicate ongoing maintenance problems. Generally, most maintenance issues with these facilities appear to be the result of age and heavy use. Some maintenance issues may be compounding over time due to being deferred because of budget and/or resource limitations. Facilities may only feature minor design issues that contribute to diminished use or maintenance.
POOR	Facilities/amenities are in poor condition and clearly show ongoing maintenance problems that ultimately may result in suspended use for repair/replacement. Maintenance issues with these facilities are the result of age and heavy use, and generally compounding over time due to deferred maintenance. Facilities may feature major design issues that contribute to diminished use or maintenance (i.e. structural, etc.)



Figure 6. Condition rating 'Excellent' sample



Figure 7. Condition rating 'Good' sample



Figure 8. Condition rating 'Fair' sample

City of Soldotna Site and Asset Inventory Summary

14 sites were assessed by the Consultant Team and a summary of the analysis of their condition is presented in the table below. These sites and amenities are detailed further in Chapter 5, Facility Profiles.

Neighborhood Use Parks	Size (acres)	Condition	Description
Aspen Park	2.1	Fair	Wooded area with older playground in cold, shady area.
Farnsworth Park	1.2	Excellent	New playground. Other amenities in good condition.
Karen Street Park	6.7	Fair / Good	Heavily used Skate Park is aging, needs improvements. BMX track is new.
Riverview Park	2.4	Good	Improvements are older, but in good condition.
Sunrise Park	4.6	Good	Large open lawn in good condition.
Community Use Parks	Acres	Condition	Description
ARC Lake Park	22.3	Good	Lightly used picnic area and trails in wooded area on lake.
Parker Park	2.7	Excellent	New facility, well maintained lawn and trails.
Soldotna Creek Park	13.6	Excellent	A mixture of some older and many newly constructed facilities
Special Use Parks / Facilities	Acres	Condition	Description
Soldotna Sports Center, Rodeo Grounds & Ball fields	55.6	Fair / Good	Sports center needs upgrades. Parking, ball fields and rodeo grounds maintained in good condition.
Centennial Park	121.2	Fair / Good	Heavily used campground and fishing area with a mix of old and new facilities.
Soldotna Community Memorial Park	17	Excellent	New facility
Swiftwater Campground	60	Fair	Heavily used campground and fishing area in need of new facilities and stream bank restoration.
Rotary Park (leased)	52	Good	Heavily used fishing area with many boardwalks and fish stairs in good condition. Some trampling of vegetation along bank.
Natural Resource Parks	Acres	Condition	Description
West Redoubt Open Space	103	Undeveloped	Wooded, minor topography. Informal trails and fishing areas.
Amenities	Qty	Condition	Description
Baseball/Softball Fields	8	Good	Maintained by Soldotna Little League
Boat Launch	3	Good	Heavily used and upgraded regularly
Campgrounds	2	Fair - Good	Campgrounds / fishing areas see very heavy use and are vulnerable to trampling
Playgrounds	4	Fair - Excel	A mix of older and newer playground facilities, well maintained
Pavilions	5	Good	2 older pavilions and 3 new pavilions currently under construction
Picnic Areas	5	Good	Most are good. The Soldotna Creek Park picnic area is overgrown with trees
Restrooms	4	Fair	More restrooms and maintenance are needed
Open Fields (multi-use)	3	Good	Heavily used and well maintained
Outdoor Ice Rink	1	Fair	Showing age, needs renovation and a cover to be most beneficial
Skateboard park	1	Fair	Existing equipment in need of repairs or replacement
River Access (Stairs)	52	Excellent	High quality, aluminum facilities
Trails & Walkways	Miles	Condition	Description
Sidewalks	20	Fair - Good	A mix of old and new facilities
Multi-Use Trails (separated)	15.1	Good - Excel	Includes State DOT Unity Trail which is heavily used
Natural Surface Trails	2.0	Good	Gravel trails in wooded areas are in good condition
River Access (boardwalks)	2.3	Excellent	Some old wooden boardwalks. Many new aluminum or wood boardwalks in great condition.
Bicycle Lanes	13.5	Excellent	Heavily used by all types of pedestrians. Striping is well maintained on streets

Table 2. Site and Asset Inventory Summary

Program Assessment

The City of Soldotna plays an integral role in offering recreation programs and services to the community, including many partnership programs with the Kenai Peninsula School District (KPBSD) and several local organizations and agencies.

As a result of an active resident population, the prominence of families with children, the presence of local and successful sports programs and user groups within Soldotna are an indication that recreation programs are well received. Multiple benefits and constraints were identified based on information obtained from youth and adult sport program organizers, as well as site and facilities assessments performed by the consultant team.

Recreation Programs in Soldotna	
Opportunities	Constraints
Active population - Blend of families and adult enthusiasts	Field conditions - limited growing season for turf; winter conditions limit use; limited activities for youth who are not in sports programs.
Adequate facilities and land base within Soldotna and directly adjacent	Lack of awareness of amenities available. Lack a collective location about events, classes and activities.
Active user groups and associations	Year-Round opportunities to be social and active both indoors and out of doors.

City of Soldotna Programs

- Learn to Skate
- Community Schools Classes (128 offered classes in 2011-2012) Most classes are hosted at KPBSD facilities. Coursework includes sports, health & wellness, technology and personal development.
- Peninsula Winter Games - Annual event with sporting competitions, and celebration of winter
- Special Park Events (Stories-in-the Park, Snowshoe in the City)
- Open Family Skates at the Sports Center

Partnership Programs

The City of Soldotna acts as a host for recreation programs organized by partner sports associations and user groups. The programs are varied and successful with the following being most prominent:

- Hockey - High School and KPHA (Kenai Peninsula Hockey Association) & Kenai River Brown Bears Junior "A" Hockey
- Soccer - Middle School, High School, Boys & Girls Club, Comp Soccer
- Football - High School, Pop Warner Football
- Baseball/Softball/T-Ball - Soldotna Little League, Legions, High School Sports
- Skatepark/BMX Programs & Events (The Tribe)
- Rodeo and Riding Programs and Events - Soldotna Equestrian Association
- Dog Mushing - Peninsula Sled Dog Racing Association
- Large Events at Soldotna Sports Center - Peninsula Winter Games, Trade Shows, Fundraisers, Skating Shows, Circus
- Watershed Education - Kenai Watershed Forum and KPBSD
- Park Events - Progress Days, Kenai River Festival
- Races - Running, skiing, triathlon events - KPBSD, City of Kenai, City of Soldotna, Tsalteshi Trails Association

Independent Programs & Facilities

- Races & Events, Trail Maintenance, Youth Ski Program - (Tsalteshi Trails Association); Unity Trail—State DOT
- Golf - (Birch Ridge Golf Course)
- Hiking, Skiing, Snowshoeing, Educational Classes (Kenai Wildlife Refuge and City of Soldotna)
- Swimming - High School Swim Team and Silver Salmon

Funding Picture

Core Services of the Soldotna Parks and Recreation Department

The City of Soldotna offers a wide array of parks and recreation service options including health and wellness, civic corridor landscaping, and park and facility stewardship. Funding for these services is through a combination of revenue and the general city budget.



Funding Facts

- The City of Soldotna is aligned with national trends in the allocation of resources towards parks and recreation services.
- Residents of the City of Soldotna are getting a good value for recreation services with only 25 cents of each dollar spent on parks and recreation being funded by property tax.
- \$'s spent on maintaining parkland is relatively low compared to national averages. At this time the city is performing minimal maintenance in parks in winter.

Figure 9. Core Services of the City of Soldotna

Existing Parks and Recreation Department Budget (FY2012 Actual)

General Features	City of Soldotna FY12 Actual	NRPA Average*	Comparison Description
Total Parks & Recreation Operating Expenditures	\$1,353,726	\$390,051 Low \$1,136,424 Median \$2,217,927 Upper	Population under 500/sq mile (Soldotna =563)
Total Parks and Recreation Operating Budget as Percent of City's Total Budget	8.6%		
Average Expenditure per person for parks and recreation in the City/Greater Area	\$325/\$50		
% of Parks & Recreation Operating Budget from Programs, Class & Entry fees (also see revenue by category below)	56%	64.6%	Overall average
Total Maintenance & Operations Expenditures as % of total budget	41%	36.5%	Overall average
Total Operating Expense per Acre of maintained parkland (excludes West Redoubt Park & Soldotna Sports Center)	\$473	\$3,840 Low \$5,236 Median \$6,558 Upper	Budget \$0.5-1 million Population <20,000 Park Acres 251-1,000
Total Salaries & Benefits Expenditures as % of total budget	59%	56%	Overall average
Total # of Full Time Employees	8	8.94 by budget size 7.45 by pop size 24.90 by acres	Budget \$0.5-1 million Population <20,000 Park Acres 251-1,000
Total # of Part Time Employees	8-14	15 Low 20 Median 90 Upper	Budget \$0.5-1 million Population <20,000 Park Acres 251-1,000

*NRPA Average is compiled from cities similar in population, budget and parkland acres

Category Description	Revenue	Expenditures	Revenue %
Soldotna Sports Center	\$439,131	\$804,348	55%
Campgrounds	\$277,633	\$242,319	115%
Parks	\$27,499	\$236,095	13%
Community Schools	\$16,691	\$70,964	24%

Table 3. Budget Comparisons Summary

Sources: Parks and Recreation Fund Recap, City of Soldotna Fiscal Year 2014 Operating Budget
2012 National Park and Recreation Database, National Recreation and Park Association

Chapter 3 - Community Needs

Methodology

This chapter summarizes the park and program needs for the City of Soldotna. These needs are based upon industry best practices, consultant team experience in the field, and, most importantly, from community guidance about recreation needs for the City of Soldotna. Multiple types of data and information were synthesized for the purpose of developing KEY FINDINGS, GUIDING PRINCIPALS, and providing RECOMMENDATIONS for: Level of Service (LOS) standards, facility improvements, operations & management, and programs that will guide the progress of recreation and trails for the next 20 years. Following are the significant components of the community needs analysis:

- Prevailing local, statewide and national trends
- Technical analysis to determine equitability and accessibility of parks, trails, and recreation sites
- Community input milestones:

Public Open House #1	January 17, 2013. The first Public Open House informed attendees of the project schedule and allowed them to provide their initial thoughts and suggestions.
Recreation Round-Up	January 19, 2013. Large public kickoff event at the Soldotna Sports Center to celebrate its 30th Birthday and recognize all of the recreation opportunities that are available in the Soldotna area. More than 400 people attended the event and enjoyed free skating, games, information booths and food.
Stakeholder Road Show	February - April 2013. Consultants contacted, met and spoke with over 40 user groups, stakeholders and individuals at least once to interview them and obtain specific information about their needs and concerns regarding recreation and trail facilities and programs in Soldotna.
Steering Committee	A Steering Committee was formed to provide guidance to the Consultants at each phase of Master Plan development. They met a total of 6 times throughout the project.
Surveys	February, 2013. An online survey was made available to recreation user groups in the greater Soldotna area for one month. The over 575 individuals completed the survey, although it was not distributed randomly and is not considered statistically valid. April, 2013. A teen survey was provided to Soldotna area middle and high schools regarding teen facilities and programs. All 7-12 grade students were given a survey, making this a statistically valid survey.
Public Open House #2	April 18, 2013. The second Public Open House displayed maps of the recommended trail and recreation facility projects and also provided a hand-out of Chapter 4, outlining the recommendations for facilities, operations, and programs. Approximately 30 people attended and provided their feedback in the form of comments and votes for project importance.
Presentations	Presentations to several organizations, boards, commissions and the City Council throughout the planning process.

Public Survey & Teen Survey Results

Public Survey

A Soldotna *Community Recreation and Trails Survey* was conducted from January-March 2013, with the purpose to generate a better understanding of current recreation use and to help establish priorities for the future development of parks, trails and recreation facilities, and programs of the City. The survey was hosted through *Survey Monkey*, a national web-based survey company. A unique IP address was needed to fill in the survey online. Information about the survey was distributed widely throughout Soldotna through a variety of print, social media, direct contacts with user groups, news articles and a well attended 'Recreation Roundup'.

The goal was to receive a minimum of 400 completed survey and this was exceeded with 580 completed surveys. It is important to note that the survey targeted recreation users and was not structured as a random, statistically-viable survey. Also note that respondents could be from outside the city limit. The survey included contributing recreation facilities that are not necessarily city-owned in order to understand a more comprehensive picture of local recreation habits. The following results are selected to share general attitudes towards the needs and priorities of park and recreation opportunities in the City of Soldotna.

Teen Survey

The online survey showed a very low turn-out in the 13-17 year old age group. With teen facilities being a significant topic of discussion in the community, the need for feedback on teen-related needs and interests was very important. Therefore, a second survey was written for distribution to 7-12 grade students in Soldotna and focused on a few teen-related questions regarding activities and interests for that age-group.

Soldotna Middle School, Soldotna High School, Skyview High School and Cook Inlet Academy were invited to participate in the survey. SMS, SoHi, and Skyview all provided returned surveys completed by most of their students. With nearly 500 surveys returned, the teen survey provided statistically valid results.

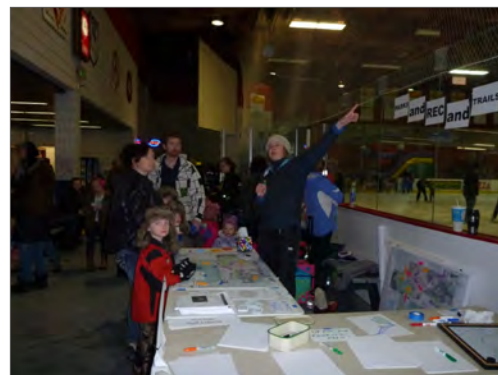


Figure 10. Recreation Roundup Survey Booth



Figure 11. Recreation Roundup Dreams

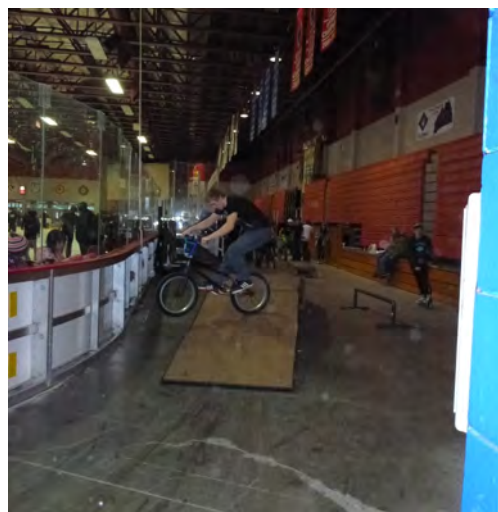


Figure 12. Recreation Roundup BMX Booth & Exhibition

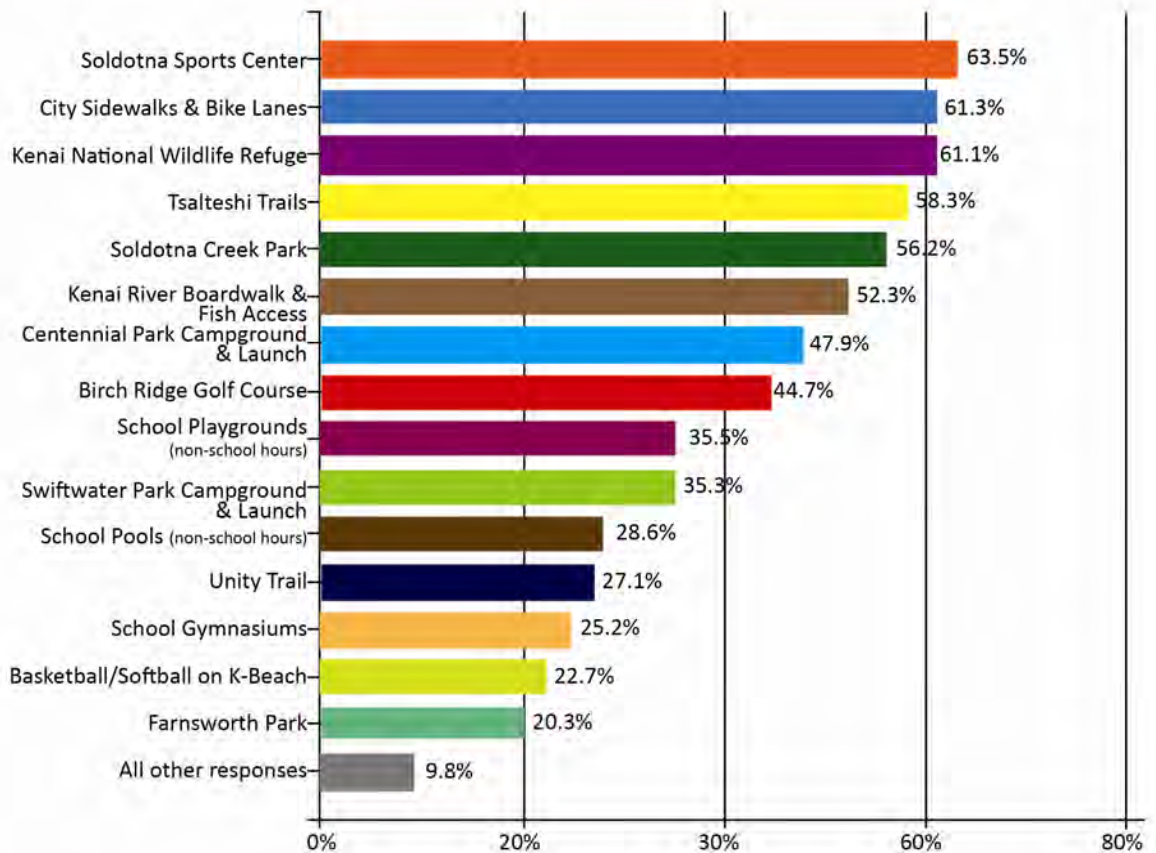
Visitation

The top five most commonly visited amenities in the past 12 months as indicated by respondents are the Soldotna Sports Center (64%), Kenai Wildlife Refuge (61%), City sidewalks and bike lanes (61%), Tsalteshi Trails (58%), and Soldotna Creek Park (56%).

Question 1.

Which Soldotna recreation areas or facilities did you or members of your household use in 2012? Please select all that apply.

(by percentage of respondents, multiple choices could be made)



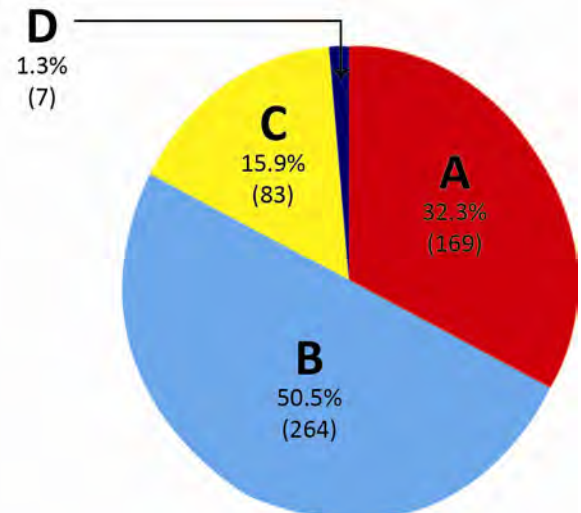
Satisfaction

Soldotna residents seem satisfied with the quality of city parks and recreation facilities with over eighty percent (80%) of respondents indicating the overall quality of their experiences as an 'A' or a 'B' letter grade.

Question 5.

How would you grade the overall quality of your experiences at Soldotna recreation areas and facilities?

(by % of respondents)



Program/Activity Participation

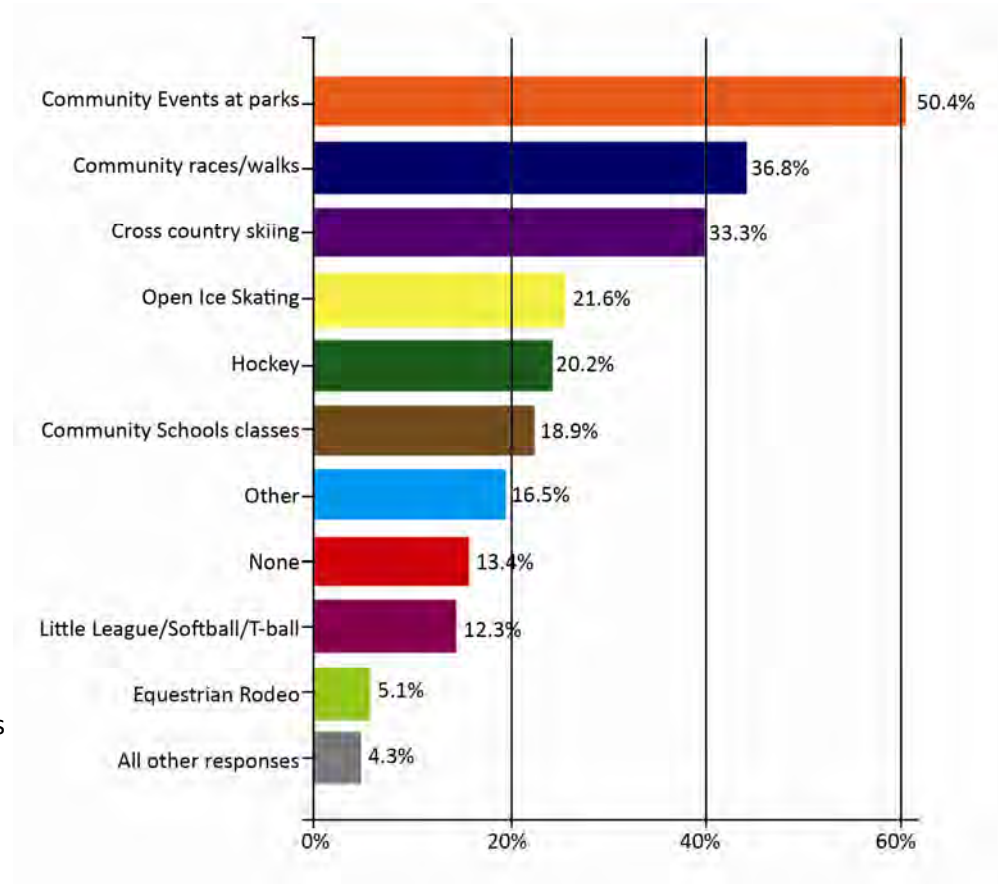
- The top three organized programs that respondents selected are community events at parks (50%), community races/walks (37%) and cross country skiing (33%).
- Open ice skating (22%) and hockey (20%) are the next most popular organized programs.
- 'Other' responses included a variety of programs with the top five specified as: Golf tournaments, soccer, swimming, dog mushing, and gym sports (gymnastics, volleyball, fitness classes, etc)

Question 8.

Please select the organized programs or events that you or members of your household participated in for 2012.

Select all that apply.

(by % of respondents, multiple choices could be made)



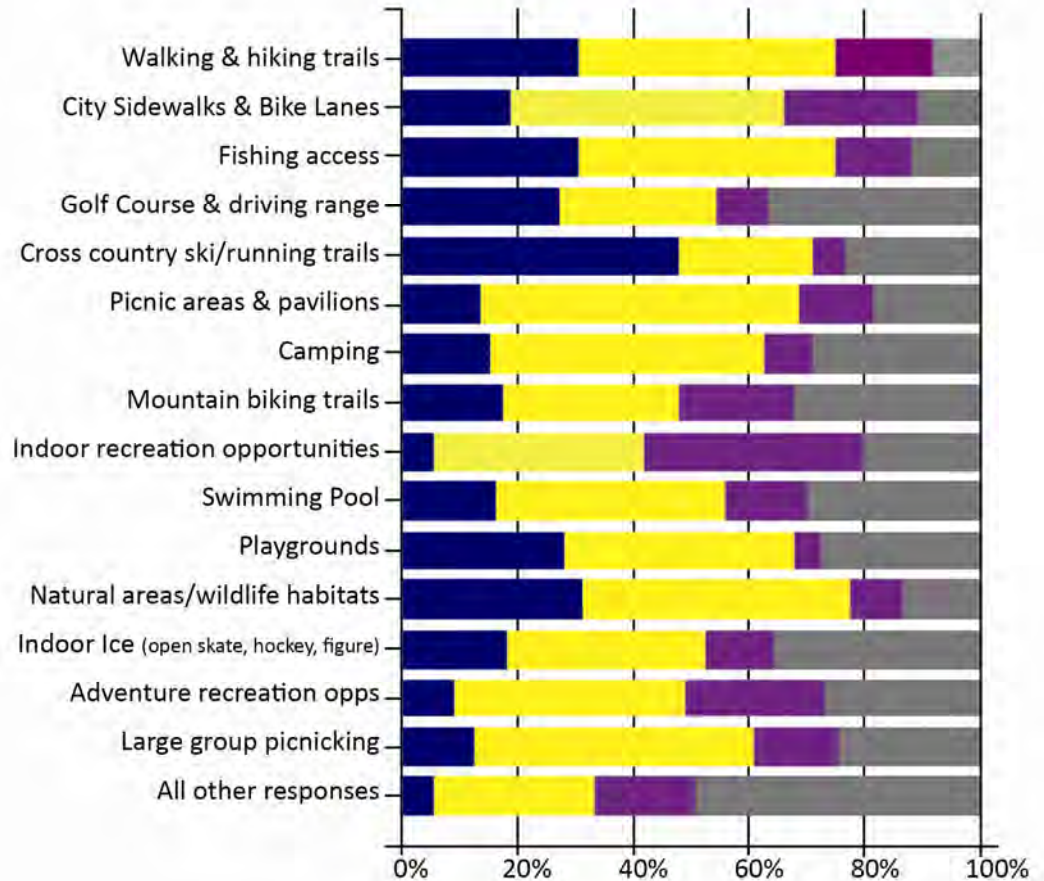
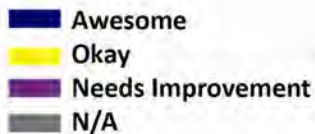
Recreational Needs

- Many households feel their recreational facility needs are well met according to the survey responses, with greatest met needs being cross country skiing/running trails (48%), natural/wildlife habitat (31%), walking/hiking trails (31%), fishing access (30%), and playgrounds (28%).
- The greatest recreational facilities needed to improve include indoor recreation opportunities (38%), adventure recreation opportunities (24%), sidewalks and bike lanes (24%) and mountain biking (20%).
- Popular needs written in the 'other' responses include:
 - covered outdoor ice,
 - indoor activities (child opportunities, soccer, track etc.),
 - dog park,
 - public golf course (and disc golf),
 - maintained tennis courts, and
 - lighted ski trails.

Question 9.

How well does the City of Soldotna meet yours and your family's overall need for the following recreation services?

(by % of respondents)



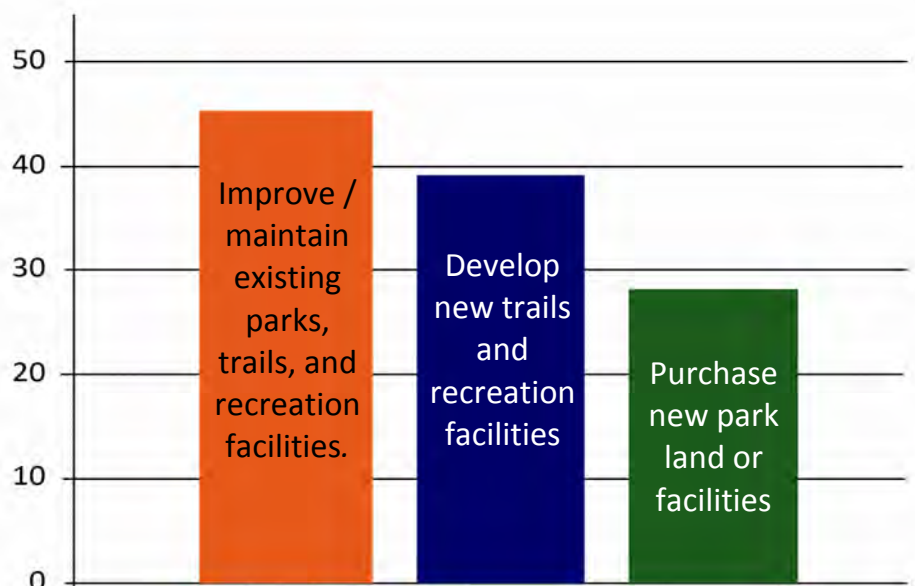
Funding Support/Priorities

Overall, respondents indicated they were most supportive of improving/maintaining existing parks, trails and facilities than they were of developing new trails and facilities or acquiring additional park lands and open space.

Question 14.

How would you allocate \$100 among various Soldotna trails, open space, parks and recreation facilities?

(average value by number of respondents)



Teen Survey Questions

Teen Survey Results

1. If you were to hang out at the Soldotna Sports Center for a few hours, which would you like?
(Air hockey, ping pong, basketball, games/cards, indoor turf, concessions skate park, vending machines, TV/couches/tables, shinny hockey, weights/fitness, outdoor patio/fire place, other...)

- | | |
|-------|-----------------------------|
| # 1 | TV / couches / tables |
| #2 | Basketball |
| #3 | Outdoor Patio / fire pit |
| #4 | Indoor Turf |
| #5 | Weights / Fitness Equipment |
| Other | Volleyball |

2. If there were new clubs or event, which would you be interested in?
(Ski bus to Alyeska, Mountain biking, rock climbing, BMX training, live music/DJ/dances, open mic/talent show, indoor gym/turf games, other.....)

- | | |
|-----|--------------------|
| # 1 | Gym |
| #2 | Music / Dance |
| #3 | Rock Climbing |
| #4 | Ski bus to Alyeska |

3. What time of day and days of the week would you want a place to hang out?

Generally, most teens are looking for somewhere to go and something to do after school and on Saturdays.

4. If there wasn't anything going on at school, would you have a way to get to the Sports Center? If not, would it help to have an afterschool shuttle?

There was a strong indication that students would use a shuttle bus going to the Sports Center after school, especially Middle School students, who don't have as much access to transportation.

5. How often would you hang out at school or the sports center if new activities and option were available?

Responses indicate that many student would spend a lot of time at a new venue or participating in new activities after school and on the weekends.

6. What other ideas do you have?

Responses focused on the desire for a fun, safe, comfortable place to hang out.

Demographic Trends Analysis

The City recently completed a Comprehensive Plan *Envision Soldotna 2030*. Demographic information from that report has been synthesized for this planning document. This analysis provides a basic understanding of the population trends of the City of Soldotna with a summary of characteristics of interest for this project.

- The City of Soldotna is centrally located on the Kenai Peninsula. The Greater Soldotna Area (including Kalifornsky, Kasilof, Kenai, Ridgeway, Soldotna and Sterling) accounted for over 35% of the total Borough population in 2009. Four out of five residents of this Greater Soldotna Area live outside the city limits.
- The total population of the City of Soldotna was estimated at 4,021 in 2009, an increase of 7% over the 2000 census population estimate. Growth is estimated to continue at a rate of just under 1% annually over the next 20 years with projected population in 2030 in the range of 4,674.
- The City of Soldotna population has increased significantly over its history (in 1960 there were 332 residents) but the City's boundaries have changed little, resulting in Soldotna having a high population density compared to other mid-sized cities. Soldotna is geographically limited unless annexation efforts occur in the future.
- The City of Soldotna is currently a relatively young population compared to other small cities and town around the United States, with a median age of 36.7 years and nearly 30% of the total population under 18 years of age.
- However, the composition of the City's population is aging with an increase of the percentage of the population over 65 years of age and a decrease of those under five years of age.
- And, with the City's growing college and health care industry, the Soldotna area will attract more and more students, retirees and professionals to the area.

Demographic Profile of the City of Soldotna

Total Population	
Total population in 2010	4,163
Population growth since 2000	7%
Projected annual growth rate	<1%
Projected growth by 2030	4,674
Additional Data	
Median household income in 2010	\$46,548
Median home value in 2010 (owner-occupied units with a mortgage)	\$183,800
Per capita income in 2010	\$28,559
Median Age in 2010	36.7

Households and Families	
Total households in 2010	1,720
Average household size	2.38
Household growth since 2000	17.5%
Projected annual growth rate	<1.5%
Projected households by 2030	2,322
Total households with families in 2010	1,054
Average family size	3.02
Family growth since 2000	8.5%
Projected annual growth rate	<1%
Projected families by 2030	1,233

Table 4. Demographic Profile of the City of Soldotna
Source: U.S. Census Bureau, 2000, 2010

Recreation Trends Analysis

Soldotna is the central hub of the Kenai Peninsula, considered 'Alaska's Play-ground' for all of Alaska. Soldotna borders the Kenai National Wildlife Refuge and other nearby state park lands that are rich in wildlife and of course is home to one of the best know salmon fisheries in the world - the Kenai River. The parks and facilities of the City of Soldotna provide traditional family and school-orientated recreation opportunities such as baseball fields, playgrounds, hockey arenas and picnic areas as well as tourism driven facilities. A unique recreation feature is the infrastructure related to the world class salmon fishing of the Kenai River which include extensive elevated boardwalks, access stairs, boat launches and campgrounds. Bordering the City, large public lands provide much of the lands and facilities geared toward outdoor, nature-based activities. The following recreation trends analysis provides a basic overview of the prevailing recreation trends statewide and nationally that are most relevant to the City of Soldotna.



Figure 13. Soldotna Sports Center hosts 'Learn to Skate' programs as well as league hockey programs.

RECREATION TRENDS SUMMARY

The City of Soldotna is a relatively young population compared to other US small cities with a median age of 36.7 years and nearly 30% of the total population under 18 years of age.

Facilities, amenities and programs that appeal to all age groups is critically important to serve the aging population as well as young professionals (20's-30's) and their future families.

Residents support an increase of winter family recreational activities to stay active year-round

Desire for high quality indoor recreation venue with flexibility for multiple sports and fitness opportunities

Residents support teen programs and activities

**36.7
years**

48.9%

In 2009, nearly 50% of Americans ages six and older participated in outdoor recreation, a slight increase from 2008.



'Active' lifestyle choices are in demand for retirees 65 and older.



Freshwater, salt-water or fly fishing is the top 'most popular outdoor activity' for Americans ages six and older.



Millennials (born 1978-2003) have pioneered adventure sports and these new options have contributed to a decline in the more traditional "bat & ball" sports.

'Fun' is a motivating factor for participating in outdoor activities for the youth age group (6-17).



Outdoor Recreation Trends in Alaska

Alaska is a state rich in outdoor recreation resources boasting 322 million acres of public lands available for recreation with 168 million acres, or 46% of Alaska, managed specifically for wildland recreation. While there is considerable demand for traditional sports in urban Alaska, most residents in smaller communities such as the City of Soldotna enjoy outdoor recreation such as fishing and trail sports as a part of their daily lives. The following summary of current trends in Alaska focuses on the recreational activities that are more prominent throughout the State and that are most relevant to the facilities and services of the City of Soldotna. The data for recreational trends in Alaska has been taken from the 2009-2014 *Statewide Comprehensive Outdoor Recreation Plan (SCORP)* completed by the Alaska Department of Natural Resources.

Participation Preferences

The Alaska SCORP report featured findings about recreation preferences and participation in outdoor recreation. The ten most popular outdoor recreation activities based on participation and the top ten favorite activities by preference and gender are illustrated in the Figures below. These findings were taken from the statewide surveys, interview and focus groups conducted in association with the Alaska SCORP study.

Table 5. Top 10 Most Popular Outdoor Recreation Activities

Source: Statewide Comprehensive Outdoor Recreation Plan (SCORP) completed by the Alaska Department of Natural Resources, 2009-2014

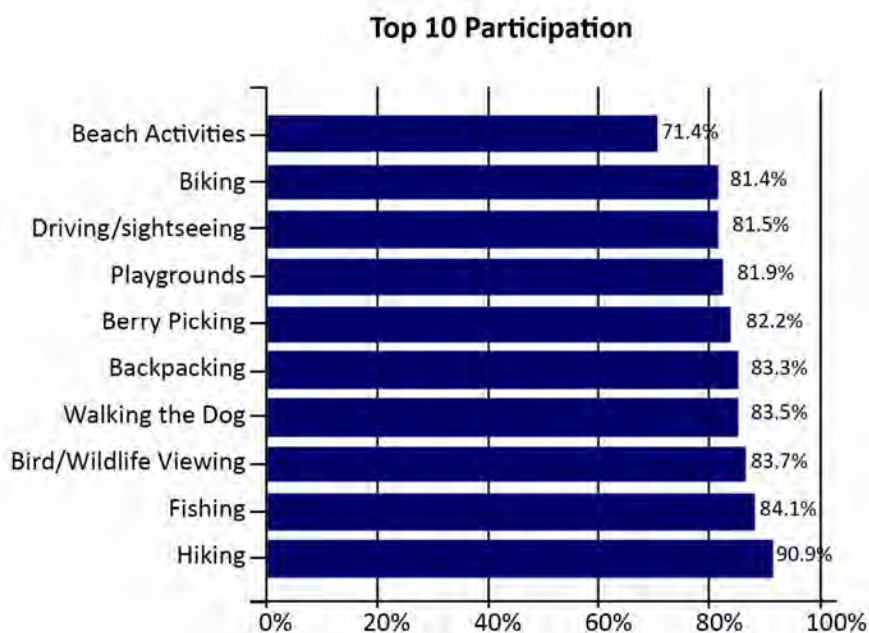
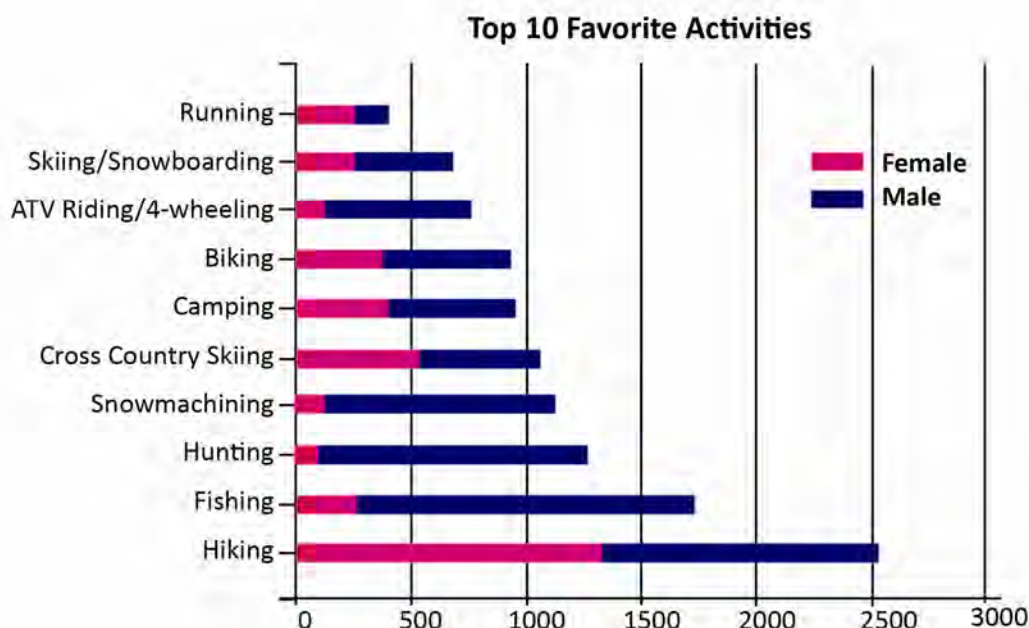


Table 6. Top 10 Favorite Activities

Source: Statewide Comprehensive Outdoor Recreation Plan (SCORP) completed by the Alaska Department of Natural Resources, 2009-2014



Wildland and Community Recreation

A major part of the 'Alaskan lifestyle' is love of the outdoor life. Alaskans participate in wildland recreation at twice the rate of the rest of the country. (Alaska SCORP, 2009) Wildland recreation in Alaska and specifically the Soldotna area includes fishing, hunting, skiing, snow machining, bird watching, rafting, power boating and dog mushing. While Alaska contains a generous supply of public land, access can be difficult or limited by land ownership, geography and distance; hence community recreation in urban areas such as the City of Soldotna are equally important. The 2009 Alaska SCORP report stated:

"Community recreation fills a very different niche for Alaskans and plays an important role in serving daily recreation needs. Community recreation is often family or school-oriented and includes a wide spectrum of activities... Community recreation plays an important role in Alaska's urban areas. It is especially meaningful in smaller and rural communities where leisure time programs are in short supply."

National Outdoor Recreation Trends

Decades of statistics have gathered recreation trends in participation and evolution of new forms of activities enjoyed by Americans. The most recent of these updated reports was from the National Survey on Recreation and the Environment (NSRE) in 2003-2004. Participation in 37 outdoor recreation activities were evaluated and those with greatest relevance to Soldotna are presented in the table below.

Activity	Participation (millions)	Percent of Population
Trail, Street, or Road Activities	188.2	88.3
Traditional Social Activities	171.8	80.6
Viewing and Photographing Activities	157.5	73.9
Viewing and Learning Activities	143.4	67.3
Outdoor Adventure Activities	118.7	55.7

Table 7. National Outdoor Recreation Activity Participation (selected)

Source: National Survey on Recreation and the Environment, USDA Forest Service, 2003-04. Participation measured in millions of people & % of total US population.

Nature-Based Outdoor Recreation

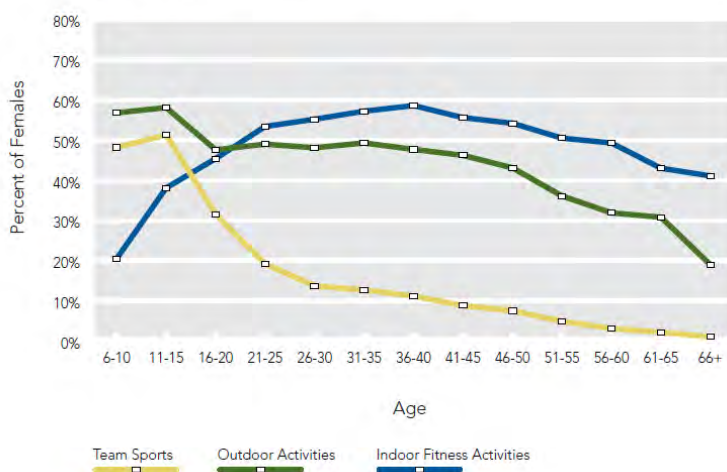
The recently completed *Outdoor Recreation Participation Report 2010* conducted by the Outdoor Industry Foundation shares an informative picture of the large participation and growth increase in outdoor recreation. The report focuses on outdoor, non-traditional sports and activities that are a part of the nationwide emphasis to 'Go outside and play'. This is in contrast to the many park and recreation agencies whose facilities and programs are more geared for traditional team sports. Key findings relevant to the City of Soldotna are:

- Nearly 50% of Americans aged six and older participated in outdoor recreation in 2009, a slight increase from 2008. 67% of these participants were 25 years or older.
- The study continues to track an overall downward slide in outdoor recreation among 6 to 12 year olds.
- Most youth are introduced to outdoor activities by parents, friends, family and relatives. As they age, of course, friends gain an increasingly influential role.
- Participation in team sports and higher cost 'destination activities' was generally down in 2009.
- Americans get outside most often to go running, jogging and trail running, making an average of 88 outings per runner in 2009, and fishing is the most popular activity based on participation rate.

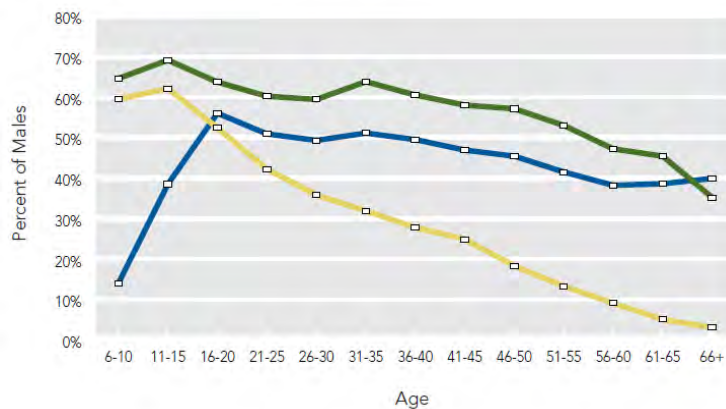
Summary Conclusions on Recreation Trends for Soldotna

- The City of Soldotna must continue a slow and steady growth and evolution of park and recreation facilities and services to meet the needs of a steadily growing population within Soldotna and the Greater Area.
- Facilities, amenities and programs that appeal to all age groups is critically important to serve the aging population as well as young professionals (20's-30's) and their future families.
- Facilities, amenities and programs that appeal to families are important in Soldotna as the majority of households in the City are families.
- Residents in Soldotna have a typical household income profile, yet live in an area that likely has experienced cost of living increases over the last 10 years higher than income growth. This indicates that there is capacity to pay more to support additional programs and services, however the acceptable threshold is limited.
- 'Active' Lifestyle—Retirees sixty-five and older are one of the largest emerging markets and demand is high for active recreation opportunities for well into their senior years.
- Youth (Age 6-17) - Although participation in outdoor activities is higher among youth than in any other group, as they age, their priorities change and frequency of participation begins to drop. 'Fun' is a motivating factor for participating in outdoor activities in this age group.
- Adventure sports—Millennials (born 1978-2003) have pioneered adventure and extreme sports and these new options have contributed to a general decline in the more traditional “bat & ball” sports.
- Team Sports— The top 5 team sports are basketball, football, soccer, baseball and volleyball.
- Indoor Recreation Activities - Outdoor recreation activity generally drops off with age and is replaced by more gym-based activities.
- Gender - The participation rate in recreation varies among different age groups and by gender. These trends help determine which areas of focus and categories of recreation are going to appeal to different age segments by gender among residents of Soldotna.

Life Cycle of Participation, Females
Ages 6 and Older



Life Cycle of Participation, Males
Ages 6 and Older



Tables 8-9. Life Cycle of Recreation Participation, by Gender
Source: Outdoor Industry Foundation - Outdoor Recreation Participation Report, 2010

Park and Trail Classifications

A universally accepted approach for classifying and measuring parkland need originated with the National Recreation and Parks Association (NRPA) in the 1980's. The inventory of existing parks and facilities in the City of Soldotna were categorized into five (5) classifications adapted from the NRPA *Parks, Recreation, Open Space and Greenways Guidelines*. The benefits of this system are multiple:

- providing a systematic way to maintain a balanced system of parks, natural open space and a wide range of recreational opportunities while avoiding overuse of parklands and facilities;
- helping to promote equal distribution of parkland and recreational facilities from one area to another;
- providing a systematic means to approach park acquisition and development;
- allowing incremental and orderly improvement to the park and recreation system;
- building community trust, support and cooperation; and
- allowing flexibility to meet changing community use.

Classification Overview Table

	General Description	Location Criteria	Size Criteria
Neighborhood Use Parks	Neighborhood Parks are the basic unit of the park system and the recreational focus of the neighborhood. Should be easily accessible by adjacent neighborhoods, typically serving residents who live within 1 mile radius. Focus is on informal and passive recreation activities.	1/4 - 1/2 mile distance and uninterrupted by non-residential roads & other physical barriers	5-10 acres is optimal.
Community Use Parks	Community Parks serve multiple neighborhoods, generally within a 3-5 mile radius. Focus is on meeting community-based recreational needs, as well as preserving unique landscapes and open spaces. A mixture of passive and active outdoor recreational activities.	Determined by quality and suitability of the site; serves multiple neighborhoods from a .5 to 5 mile distance.	As needed for desired uses. Approx. 10-50 acres.
Special Use Areas	Special Use Parks serve the larger region (multiple communities). Offer traditional as well as specialized facilities that are intended to produce revenue to assist in off-setting costs.	Located to allow access from the greater region	As needed.
Open Space Areas	Open space areas are recreation or natural areas which can include a habitat preservation purpose. Areas can incorporate diverse recreational opportunities such as multi-use trails, historical resources and fishing areas.	Resource availability and opportunity	variable
School Parks	School sites can fulfill space requirements for various classes of parks.	KPBSD property	variable
Multi-Use Paved Trails	Paved trail designed for multiple use (pedestrian, bicycling, skiing), typically illuminated.	Recreational or non-motorized commuting	variable
Natural Surface Trails	Improved trail surface in a natural setting	Interior park systems	variable
Boardwalks	Constructed walkway to protect sensitive soils/habitat	As needed	variable
Bicycle Lanes	Designated & striped portion of the roadway for bike use.	Designated road corridors	variable
Sidewalks	Concrete walkway along a road corridor or in a park.	Designated roads & parks	variable

Table 10. Park and Trail Classifications

Level of Service Standards

This master plan recommends Level of Service (LOS) standards that reflect the current methodology recommended by the NRPA and projects future parkland needs to achieve reasonable and prudent standards for parks and amenities in Soldotna over the next 20 years. The LOS standards provide a guideline for the Parks and Recreation Department to plan and build facilities needed to provide a balanced and equitable distribution throughout the community. The application of these LOS standards is directly impacted by Soldotna's land supply, tax base and willingness to fund, as well as recreation demand. Flexibility has been built into the process with a range between minimum level and preferred level of services, and these need to be adjusted (potentially every 5 years) to reflect changing trends in recreation use. Ultimately, the Soldotna community must reach a consensus on what is required to maintain the quality of life for the community based upon the reality of local economic conditions and other factors.

Park Needs Summary

The analysis and projections of future parkland needs are based upon current NRPA standards but also reflect Soldotna's unique situation of serving the Greater Soldotna Area as well as an intensive tourism market for Kenai River access. It is important to remember that these standards are based on a variety of methodologies that are subjective in nature and ultimately, the City of Soldotna must reach a consensus as to how much parkland and facilities are needed to maintain the desired quality of life and that are affordable by the community.

Recreation Needs Summary

NRPA also offers standards for a variety of recreation facility types. If a deficit exists, the community might logically prioritize funding to create or enhance parks and facilities to relieve the facility deficit. The creation of the following standards helps promote equal distribution, an opportunity to view components within an overall context with measures for success and allows incremental improvements to the system.



City of Soldotna Recreation and Trails System LOS Recommendations

Facility Type	Total Qty	Current City of Soldotna LOS Standards (2013)				Min. Recommended NRPA LOS Standards			Recommended City of Soldotna LOS Standards Range (2014-2023)		
		City*	Greater Area**								
Neighborhood Use Parks (NU)	17.1	4.1	0.6	Acres per	1,000	2	Acres per	1,000	2-6	Acres per	1,000
Community Use Parks (CU)	38.6	9.3	1.4	Acres per	1,000	5	Acres per	1,000	5-15	Acres per	1,000
Special Use Parks (SU)	305.8	73.4	11.2	Acres per	1,000	5	Acres per	1,000	5-15	Acres per	**1,000
Open Space Areas (OS)	103	24.7	3.7	Acres per	1,000	2	Acres per	1,000	2-5	Acres per	**1,000
Paved Multi-Use Trails	15.1	3.6	0.5	Miles per	1,000	-	Miles per	1,000	5-15	Miles per	1,000
Natural Surface Trails	2.0	0.5	0.0	Miles per	1,000	-	Miles per	1,000	1-3	Miles per	1,000
Boardwalks	2.3	0.6	0.1	Miles per	1,000	-	Miles per	1,000	.5-1.5	Miles per	1,000
Sidewalks	20	4.8	0.7	Miles per	1,000	-	Miles per	1,000	6-10	Miles per	1,000
Bike Lanes	13.5	3.2	0.5	Miles per	1,000	-	Miles per	1,000	3.5-7	Miles per	1,000
Total Park Acreage	464.5	111.5	17	Acres per	1,000	10	Acres per	1,000	15-20	Acres per	**1,000
Park-Schools (SP)	160.1	38.5	5.8	Acres per	1,000	-					
Total Park Acreage with Schools	624.6	150	22.8	Acres per	1,000	10	Acres per	1,000			
Recreation Facilities:											
Baseball/Softball	8	1.9		per	1,000	1	per	5,000	1.5 - 2.5	per	1,000
Boat Launch	3	0.7		per	1,000				0.7 - 1	per	1,000
Campgrounds	2	0.5		per	1,000				0.5 - 0.7	per	1,000
Dog Park	0 acres	0.0		per	1,000				0.15 - 0.5	per	1,000
Playgrounds	4	1.0		per	1,000				1-3	per	1,000
Pavilions	2	0.5		per	1,000				1.2 - 1.5	per	1,000
Picnic Areas	5	1.2		per	1,000				1.2 - 2	per	1,000
Restrooms	4	0.3		per	Park				.8 - 1.2	per	park
Open Fields (Multi-Use)	3	0.7		per	1,000	1	per	1,000	1 - 2	per	1,000
Outdoor Ice Rink	1	0.2		per	1,000				0.5 - 1	per	1,000
Skateboard park	9000 s.f.	2000 s.f.		per	1,000				3000 - 5000	per	1,000
Sports Center/Ice Arena	1	0.2		per	1,000				0.2 - 0.5	per	1,000

Table 11. City of Soldotna Level-of-Service Recommendations



Figure 16. Cold weather doesn't stop us!!
Photo credit: Sheila Best



Figure 17. Regional running race held at Tsalteshi Trails.
Photo credit: Sheila Best



Figure 18. Winter conditions on a river boardwalk.
More winter walking opportunities are desired.

Key Findings of Community Outreach

ACTIVE, SOCIAL AND AMBITIOUS COMMUNITY

Residents of the greater Soldotna area are socially and physically active year-round, indoors and out-of-doors. Their needs and activities are wide ranging, spanning all age groups and demographics. Community races and large events are cornerstone activities. Avid recreation users and local sports teams, who compete with Anchorage area teams, aspire to having more recreation amenities and options, especially during inclement weather.

CITY RECREATION AND TRAIL OPPORTUNITIES ARE VALUED

Soldotna has developed a diverse and comprehensive system of parks and athletic facilities that have met the needs of the community for many years. Residents utilize all of the existing facilities, are thankful for what is provided and appreciate the City's efforts to meet their needs. Soldotna's system of sidewalks, bike lanes and trails has steadily grown, but is in need of additional facilities and connections to meet growing needs and interests.

KENAI RIVER IS A PIVOTAL NATURAL FEATURE

The Kenai River is the most valuable natural asset in our community; the Kenai River is our identity. Access for fishing has improved immensely in the last 10 years. Viewing the Kenai River and recreating near it are important opportunities for both residents and visitors.

PRIVATE OR OTHER NON-CITY RECREATION FACILITIES ARE VERY IMPORTANT

The local golf course, ski trails, mushing trails, and hiking trails are all very popular destinations for tourists and residents, year-round. Strong relationships between the City, the Borough, the Kenai National Wildlife Refuge, the Alaska Department of Natural Resources, Kenai Peninsula College, and non-profit organizations are key to a strong recreation system.

MAINTENANCE MAKES A DIFFERENCE

There are management and maintenance challenges due to heavy seasonal use, winter conditions, and aging equipment. Several recreation facilities at the schools have ceased being maintained over the last 10 years, but the community wants to see them kept up and maintained for their intended uses, specifically; outdoor ice rinks and tennis courts. Sidewalks are used year round by many residents going to work, school, or shopping. They are also used for exercise, however; winter maintenance of the sidewalks is not reliable nor sufficient to meet the community's needs. Residents would like the campground parks open during winter months with plowing or grooming of the access roads and trails, for walking and skiing.

SEASONAL VISITORS

Summer research shows that visitors are most abundant during peak fishing season in July. Campgrounds are overflowing, fishing areas are often trampled, restrooms and fish cleaning stations are at a premium, and traffic is slow. The large festivals and race events are well attended and the facilities are able to withstand the heavy use without excessive damage. Tourist requests focus on providing more of the basics such as showers, restrooms, potable water, and parking space. They also appreciate safe pedestrian crossings and routes through town.

Key Findings of Community Outreach

IMPROVE PEDESTRIAN SAFETY AND CONNECTIVITY

Soldotna has two highways passing through the middle of town, as well as a large river. Safe *and* comfortable crossings for pedestrians are very challenging. Residents want to walk, run and bicycle between home, school, work and shopping destinations on well-maintained, comfortable and safe pedestrian walkways or trails, at all times of the year. Many streets have sidewalks at back of curb, but the separation is not enough to feel safe and comfortable along the Sterling and Spur highways. Additional trail corridors are needed to provide pedestrian connections and options between destinations, especially along the Sterling Highway, to Kenai Peninsula College, and to Fred Meyer.

CARING COMMUNITY

The greater Soldotna community has a strong sense of commitment to the health of the Kenai River and the people who live and have lived in the area. They care deeply about the history of the community, habitat protection, education, economic stability, and quality of life. Managing and educating the tens of thousands of visitors takes time and effort, but is a goal of Soldotna area residents. Getting out, especially during winter months and seeing friends and neighbors is critical to the health and sustainability of the community. This community vision is achievable with the right combination of facilities, operations, programs and partnerships.

PARK DISTRIBUTION AND VARIETY

Most residential neighborhoods have a local playground and/or park within reasonable distance. Other than neighborhoods just beyond city limits, little park infill is needed to bring Soldotna up to standards for neighborhood parks. There are several special use parks in Soldotna, as well, including a skate park, campgrounds, ball-fields, rodeo grounds, open space, community park, an indoor sports center with an ice rink, and a state park.

REGIONAL CONNECTIVITY IS CRITICAL

Soldotna has many regional destinations within or near city limits, such as the Kenai National Wildlife Refuge, Tsateshi Trails, Kenai Peninsula College, Soldotna Creek Park, and others. Community events, such as races and festivals, are increasing in popularity. As the community grows more active and healthy it is critical to provide pedestrian connectivity within and between destinations, some of which may be challenging or expensive. Safe and comfortable pedestrian amenities are especially needed along the Sterling Highway from Skyview High School to the Golf Course and beyond.

AWARENESS OF FACILITIES AND OPPORTUNITIES IS NEEDED

Many residents admitted to a lack of awareness of the amenities and opportunities available. A single source for information related to all recreation areas, events, classes, and other opportunities is needed to assist residents and visitor. Increased collaboration between the school district, the hospital, the city, and other organizations could help provide a comprehensive and successful outreach tool. Local residents would like their community to be known for its “recreation culture” and for its outstanding recreation opportunities.



Figure 19. Pedestrians enjoying the bicycle lane along West Redoubt Ave.



Figure 20. Entrance sign for the Soldotna Community Memorial Park (cemetery).

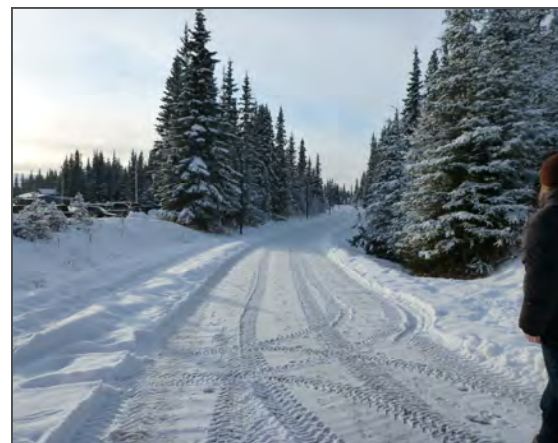


Figure 21. Maintained winter multi-use trail.

Chapter 4 - Recommendations

Methodology

Six strategies have been expressed by the community to serve as the basis for future action and decision-making for the City of Soldotna's recreation facilities and trails. These strategies are the product of a comprehensive and on-going public engagement process. In the following pages, these guiding principles are described in detail along with strategies, long and short-term actions, and policies necessary to implement the Master Plan. These strategies are not in priority order and should be considered equal value.



Figure 22. Master Plan Methodology

Guiding Principles

- 1 Honor the Kenai River.** Provide opportunities for people to be connected to the Kenai River visually, emotionally and physically and to respect the value natural resources have to our community and to all who have lived here before us.
- 2 Activate Recreation Facilities.** Increase the availability of existing infrastructure through changes in programming, maintenance, operations, and partnerships
- 3 Balanced Services for Neighborhoods, Community and Visitors.** Provide a balanced mix of services and facilities to meet the wide ranging needs of the local residents, the greater Soldotna Community and the season needs of tourists.
- 4 Improve Pedestrian Access and Connections.** Add or improve pedestrian facilities to provide more safe and comfortable connections between destinations in town, and beyond.
- 5 Partnerships.** Develop working relationships between local, state and federal government, non-profit organizations, clubs, and private businesses to meet the community's goals in the most efficient and effective manner possible.
- 6 Regional Economic Engines.** Respect and support all of our community assets and destinations, including recreation facilities, as important to a high quality of life and as revenue generators for Soldotna.

GUIDING PRINCIPLE #1

Principle

Honor the Kenai River

Provide opportunities for people to be connected to the Kenai River visually, emotionally and physically and to respect the value natural resources have to our community and to all who have lived here before us.

Strategies

1. Continue to protect the shoreline habitat of the Kenai River through enforcement, thoughtful planning, and functional infrastructure.
2. Promote facilities and activities that provide opportunities for residents and visitors to enjoy and appreciate the health and beauty of the river.
3. Provide a mix of opportunities for residents and visitors to learn about natural and cultural features of the Kenai River and how to help protect it for future generations.
4. Foster the health and beauty of all of Soldotna's natural resources, including the urban forest.



River walkway and access stairs at Soldotna Creek Park

GUIDING PRINCIPLE #2

Principle

Activate Recreation Facilities

Increase the availability of existing infrastructure through changes in programming, maintenance, operations, and partnerships.

Strategies

1. Increase maintenance and operations to expand the usability of existing facilities, both in quality and quantity of availability.
2. Expand programming opportunities of existing facilities to make more use of existing infrastructure.
3. Promote partnerships that will foster the expanded use of all available facilities, including non-City infrastructure.
4. Support increased funding for staff and equipment that is needed to provide more recreation opportunities for more people, more days of the year.



Strong support for indoor recreation opportunities

GUIDING PRINCIPLE #3

Principle

Balanced Services for Neighborhoods, Community and Visitors

Provide a balanced mix of services and facilities to meet the wide ranging needs of the local residents, the greater Soldotna Community and the season needs of tourists.



Wednesday Market at Soldotna Creek Park

Strategies

1. Continue to provide nearby neighborhood parks for everyday outdoor recreation needs of Soldotna residents.
2. Provide facilities and programs that can accommodate large events and specific recreation types for the greater Soldotna community.
3. Manage parks to accommodate peak season use without disrupting the ability for local residents to access and enjoy recreation facilities.
4. Diversify recreation opportunities as needed to adapt to changing demographics and recreation trends.
5. Provide more recreation opportunities during winter months.



Redoubt Elementary playground

GUIDING PRINCIPLE #4

Principle

Improve Pedestrian Access and Connections

Add or improve pedestrian facilities to provide more safe and comfortable connections between destinations in town, and beyond.



Teenagers walking along West Redoubt Avenue

Strategies

1. Continue improving the variety, availability and safety of pedestrian options in Soldotna.
2. Encourage and accommodate more use of pedestrian facilities.
3. Support the construction of regional trail amenities that will help meet the growing need for commuting and recreational trail facilities.



Multi-purpose trail along the Sterling Highway

GUIDING PRINCIPLE #5

Principle

Partnerships

Develop working relationships between local, state and federal government, non-profit organizations, clubs, private businesses in an effort to meet the community's goals in efficiently and effectively.



Summer BBQ at Karen Street Park, hosted by The Tribe

Strategies

1. Develop policies and agreements with the Kenai Peninsula Borough and the KPB School District to develop management and maintenance partnerships to achieve the community's recreation needs efficiently and effectively.
2. Form a multi-agency, multi-organization team to collectively promote, and provide for recreation opportunities and facilities to residents and visitors in the Soldotna area.
3. Encourage all forms of private-public partnerships that can assist with the performance and affordability of recreation facilities and programs in the greater Soldotna area.



Race event at Tsalteshi Trails, sponsored by Skinny Raven Sports.
Photo Credit: Sheila Best

GUIDING PRINCIPLE #6

Principle

Regional Economic Engines

Respect and support all of our community assets and destinations, including recreation facilities, as important quality of life and as revenue generators for Soldotna.



Kenai River Festival at Soldotna Creek Park

Strategies

1. Provide recreation facilities that will encourage economic growth and strengthen the economic viability of the community by attracting new residents, visitors, students and businesses.
2. Establish goals for providing and maintaining recreation resources to ensure high quality of life for residents and a high quality experiences for visitors.
3. Support relationships with the local economic drivers, such as the hospital/medical district, schools, Kenai Peninsula College, and others.
4. Maintain a role in the protection and enhancement of the Kenai River as a building block of the local lifestyle and economy.



Successful day of fishing at Rotary Park

Operational Recommendations

1. Maintenance

- A. Obtain resources to maintain interior park trails for walking, snowshoeing, skiing during the winter.
- B. Increase staffing during peak tourist season to keep restrooms and trash receptacles clean.
- C. Obtain equipment and staff for maintaining Ice trails / rink at Soldotna Creek Park and outdoor ice at ARC Lake. Concentrate on preparing the ice prior to peak use times, such as weekends.
- D. Improve the method and frequency of clearing snow, ice and gravel from sidewalks and trails along roadways.
- E. Maintain or form new partnerships with organizations or agencies to share maintenance duties: KPBSD, DOT, DNR, Boys and Girls Club, KPHA, Soldotna Little League, etc. Specifically outdoor ice, basketball courts, and tennis courts.
- F. Develop maintenance standards for all Parks & Recreation facilities to include natural habitat assessment and protection criteria specifically aimed at properties and activities along the Kenai River.

2. Partnerships

- A. Schedule semi-annual meetings with DOT to review and discuss projects on the horizon in the Soldotna area.
- B. Work cooperatively with Soldotna Police Department, KWF Stream Watch Program and the DNR to educate the public on environmental issues and to enforce rules and regulation during fishing season.
- C. Continue to assist the Peninsula Sled Dog & Racing Association with the maintenance of their trail head and support their efforts to raise money for additional improvements at that location. Provide a short term lease agreement for their use of the property.
- D. Assist the Soldotna Rotary Club and Kenai Peninsula Borough with site selection and design of a community garden.
- E. Pursue options for relocating the Equestrian Association and Rodeo grounds prior to supporting a long term lease and construction of indoor arena. Facilitate discussions between the Soldotna Equestrian Association and the Kenai Peninsula Borough to include the Equestrian / Rodeo operations in the Matti's Farm proposal.
- F. Coordinate with the Soldotna Chamber of Commerce and other organizations to host an annual winter carnival and/or holiday market at Soldotna Creek Park.
- G. Continue support of the Tsalteshi Trails Association through city grants.
- H. Sterling Highway Trail - Separated multi-use paved trail along Sterling Highway from Devin Drive to Solid Rock Road.
 - i. Coordinate with AK DOT to include the separated trail in new highway design and construction.
 - ii. Partner with the Borough and other organizations to advocate for the trail - (lobby senators, representatives)
- I. Strengthen relationship with the Borough, School District, Kenai Watershed Forum, Tsalteshi Trails Association, KNWR, Kenai Peninsula College, Boys & Girls Club, and other organizations to provide more effective maintenance and to optimize recreation opportunities.
- J. Coordinate with Kenai Peninsula Borough to lease their land for KPBSD recreational uses, such as trail development and a future base ball field, on the wooded property west of Redoubt Elementary.
- K. Establish a "Park Ambassador" program to provide a positive community interaction with tourist destinations.

3. Programming

- A. Develop a central website/bulletin board for city and partner organization recreation opportunities.
- B. Facility Rentals - Expand offerings to include rental of outdoor ice, dog park, and other facilities.

Operational Recommendations (continued)

- C. Skate Park & BMX - Continue to partner with The Tribe to offer competitions, clinics, and events.
- D. Community Races, Celebrations and Events - Continue partnerships for year-round community activities.
- E. Community Schools - continue to expand the variety and frequency of classes, and to cluster course times.
- F. Community Garden - Operate a garden plot lease program on Borough Property.
- G. Community Schools - coordinate with KPBSD to provide more activities for teenagers after school and on the week-ends.
- H. Learn to Skate - Expand to include outdoor venues for classes, shows and events. ("Holiday on Ice")
- I. Continue low-cost introductory programs that introduce individuals and families to a variety of indoor and outdoor recreation activities.
- J. Grow the Campground Ambassadors program with support from a new Volunteer Coordinator position.

4. Property and Easements

- A. Work with private land owners to secure trail easements through Birch Ridge Golf Course property.
- B. Work with land owners to secure trail easements through private property between Devin Drive and Soldotna Avenue and for routes between Pioneer Street ROW and Lingonberry Lane and East Redoubt (Fred Meyer entrance)
- C. Identify a location for future playground in the neighborhood on the northeast side of the Kenai Spur Highway.
- D. Investigate the acquisition of parcels west of Karen Street Park for Brownfield reclamation and park expansion.
- E. Support the purchase of the parcel west of Soldotna Creek Park for public or semi-public use, with pedestrian connectivity.
- F. Develop site selection criteria to acquire property for public recreational uses, such as along the Kenai River to fill the gaps in the river trail corridor between Swiftwater Campground and Kenai Peninsula College.
- G. Identify property for a future playground in northwest section of Soldotna.

5. Funding

- A. Kenai Peninsula Borough - request additional funding for education needs such as maintenance of school-related sports facilities and community schools teen programs.
- B. User Fees - Review existing fee structure and adopt new user fee system that identifies basic services and establishes an activity-based costing system for all City of Soldotna facilities. Consideration should be given to including seasonal and tiered rates as well as resident rates.
- C. Kenai Peninsula Borough - work with the borough to create a Central Peninsula Recreation Service Area to provide operations funding for the expanded Soldotna Sports Center.
- D. City of Soldotna - Pursue alternate sources of revenue for capital improvement projects, as needed, such as sales tax increase with a sunset clause or a general obligation bond.
- E. GRANTS: Continue to seek grants (state, federal, oil companies, etc) for capital projects and for reclamation of contaminated parcels for park use (Karen Street Park). See specific facility recommendations in this chapter and in Chapter 5 - Facility Profiles.



Damaged habitat along the bank of the Kenai River

Operational Recommendations (continued)

6. Staff

- A. Convert several seasonal positions into FTE positions or create new year round positions to cover enhanced winter maintenance.
- B. Create a 'Handyman' Term Contract RFP for small repairs and minor construction to augment staff capacity.
- C. Create an Events / Volunteer Coordinator position to maximize volunteer support.
- D. Assign a "Program Manager" to oversee all Parks & Recreation programs.
- E. Evaluate the potential of a 'Youth Works' Program for a first time job experience for teens in parks.
- F. Create a Trails Specialist / Grant Coordinator position to leverage trail funding (design / construction / maintenance)



Figure 23. City of Soldotna Parks & Recreation Staff

7. Pedestrian Routes / Signage

- A. Establish policies relating to bicycle route designation and signage.
- B. Designate an in-town route for the Unity Trail along Riverview, Kobuk and Knight Drive. Provide signage.
- C. Designate a route between Swiftwater Campground and Birch Ridge Golf Course. Provide signage.
- D. Designate a route between Soldotna Creek Park and Swiftwater Campground. Construct links and provide signage.

8. Park Design Standards

- A. Develop design standards for trails, signage, lighting, benches, memorials, structures, trash receptacles and other amenities.
- B. Incorporate a design review process, with clear phasing and community input milestones into all park design projects.

9. Leases

- A. Develop a short term lease agreement with the Peninsula Sled Dog & Racing Association for the use of City property for their trailhead.
- B. Investigate Lease/Purchase of Birch Ridge Golf Course.

10. Natural Resource Management

- A. Partner with Kenai Watershed Forum, Soldotna Chamber of Commerce and KPBSD to sponsor an annual Arbor Day celebration and to work toward 'TreeCity USA' designation.
- B. Upgrade and continue to conduct annual habitat assessment and management effort for park property to address urban forestry, riparian habitat, and other natural resource issues or concerns.
- C. Continue annual update of TreeWorks database and implementation of Urban Forestry Program.

Capital Improvement Recommendations - Parks & Facilities

11. *ARC Lake Park*

- A. Provide additional park amenities as needed to accommodate increased use year round, such as picnic facilities, trash cans, rest rooms, benches and signs.
- B. Design and construct a multi-use trail system inside ARC Lake Park and adjacent to trails in the KNWR.

12. *Aspen Park*

- A. Allocate funds for tree thinning at the playground
- B. Allocate funds to construct a dog park as approved by the Parks & Recreation Advisory Board and partner with “Friends of Aspen Dog Park” to establish operational policies and provide additional Dog Park amenities.
- C. Upgrade and expand the playground and parking area.

13. *Centennial Park*

- A. Provide sewer and water to Centennial Park for restrooms and showers.
- B. Allocate funds to design and construct a trail and stairs connecting the existing boardwalk up the hill to the Soldotna Sports Center, in accordance with the Sports Center Master Plan.
- C. Develop a Master Plan for operations, maintenance and facility improvements in the Park. Considerations to include: enforcement of fishing rules, site circulation, traffic control, amenities, utility infrastructure, etc.
- D. Conduct a planning process for potential additional Fish Access Stairs.

14. *Farnsworth Park*

15. *Karen Street Park*

- A. Provide a restroom during summer months.
- B. Re-designate the park as a community use park and appropriate funds for a Master Plan and for Phase I Development (skate park expansion and cover).
- C. Develop a Master Plan for Karen Street Park to include: expanded and covered skate park area, BMX track, playground, pavilion, paved game area for basketball & four-square, ball wall, restrooms, large lawn area, trail connections, and other amenities.
- D. Fund and construct Phase I, as determined in Master Plan.
- E. Sell any parcels identified for liquidation in the Master Plan; use proceeds to fund capital improvements.
- F. Pursue the acquisition of the two adjacent parcels and grant funding for clean-up and reclamation as large lawn areas and additions to Karen Street Park.
- G. Appropriate funds for the design development and construction of Phase II Karen Street Park development.



Figure 24. Good times at Karen Street Park Skate Park

Capital Improvement Recommendations - Parks & Facilities (continued)

16. *Parker Park*

- A. Construct / Install gazebo. Consider adding benches and a fitness kiosk along the trail.
- B. Maintain trails during the winter.
- C. Work with Public Works to be able to safely close off the street for larger community events/weddings.

17. *Riverview Park*

- A. Provide a restroom during summer months.

18. *Rotary Park*

- A. Pave parking lot, install automated pay station.
- B. Improve enforcement of parking fees and fishing regulations
- C. Improve trail facilities to prevent damage to riparian vegetation.

19. *Soldotna Creek Park*

- A. Construct Phase II Improvements to include Band Shell / Pavilions, trails, lighting, landscaping, plaza, restrooms, a rose garden, and paving on the parking lots.
- B. Allocate funding for design and purchase of park information and interpretive signage.



Figure 25. A beautiful September afternoon on the lawn at Soldotna Creek Park

20. *Soldotna Community Memorial Park*

- A. Work with adjacent land owners to identify trail connections from neighborhoods to the river trail.
- B. Design and construct a pavilion as shown in conceptual design.
- C. Continue memorial plaque program and construct additional islands for the memorial walk, as needed.

21. *Soldotna Regional Sports Complex - Renovation and Expansion*

- A. Install speed humps along driveways between parking lots and ball fields.
- B. Pave the driveway to the Rodeo Grounds, from the Sports Complex entrance driveway.
- C. Install stop signs on bike trail at ball field entrances.
- D. Seek funding to renovate and expand the Soldotna Sports Center in accordance with the Master Plan, addressing the following needs and concerns:
 - i. Repairs and upgrades to mechanical, electrical and structural components;
 - ii. Teen Center tenant space with separate entrance, office, game room and TV lounge areas for teens;
 - iii. Large multi-purpose area (field house) for recreational and social events, classes, and other needs. Uses include: basketball, volleyball, soccer (turf), skate park equipment, batting cage, elevated track, and other uses.
 - iv. New public entrance with lobby, administration offices, public information counter, concessions, and tenants;
 - v. Expanded conference rooms, with restrooms, storage and a larger kitchen;
 - vi. Outdoor patio, sitting area;
 - vii. Expanded parking and trail access to Centennial Park.

Capital Improvement Recommendations - Parks & Facilities (continued)

- E. Funding - Determine viable funding sources for Sports Center construction and ongoing annual maintenance and operations, such as grants, state or borough funding, and/or increased taxation.
- F. Design Development & Construction of Sports Center upgrades and expansion as determined in Master Plan
- G. Develop a Master Plan for the overall site circulation and land use for the area including the Sports Complex, Ball Fields, Centennial Park, Rodeo Grounds and Soldotna Historical Society.

22. Sunrise Park

- A. Provide a restroom during summer months.
- B. Allocate funding to develop a Master Plan to consider adding to the perimeter of the large lawn area: a lighted loop trail, a small playground, picnic facilities, and parking.
- C. Construct new facilities as per the approved Master Plan.

23. Swiftwater Campground

- A. Construct campground expansion area as planned.
- B. Initiate a planning process to assess stream bank conditions, restore and protect bank habitat and to add boardwalks and fish stairs, as necessary.
- C. Prepare a Trails Plan to incorporate a multi-use trail within the campground.

24. West Redoubt Open Space

- A. Establish a park design task force to include the City of Soldotna, AK DNR Parks, AK DNR Fish and Game, Kenai Peninsula College (anthropology), Kenaitze Indian Tribe, Soldotna Historical Society, and the residential neighborhood with the following responsibilities:
 - i. Name the park / open space / recreation area;
 - ii. Review and assist, as needed, with design and location of new facilities;
 - iii. Identify funding, select a planner to produce a Master Development Plan, and provide review/approval authority for the open space plan.
- B. Prepare a Master Development Plan for the open space, based on the Conceptual Plan, including open space management criteria and an implementation phasing plan for each of the following components: rail and trailhead design, cultural interpretive facility design, fishing access plan, parking lot size and location, implementation phasing, and law enforcement.
 - i. Law enforcement for fishing areas;
 - ii. Cultural interpretive facilities/trail;
 - iii. Neighborhood connection trails to local streets and trail heads;
 - iv. Small parking lot at West Redoubt trail head;
 - v. Trail head at end of Riverview;
 - vi. Looped and tiered single-track hiking / biking / skiing trails;
 - vii. River access / habitat protection at the existing fishing area (boardwalk and stairs);
 - viii. Trail connection to Pedestrian Bridge
- C. Allocate funding for open space development, according to the approved Master Development Plan.



Figure 26. Mountain biking is popular in the Soldotna area.
Photo credit: Sheila Best

Capital Improvement Recommendations - Parks & Facilities (continued)

25. *West Redoubt Pedestrian Bridge to the College*

- A. Form a team of project advocates including residents, Kenai Peninsula College, City of Soldotna, Kenai Peninsula Borough to prepare an action plan for the funding, design and construction of a pedestrian bridge between West Redoubt and College Road, including city utilities and emergency vehicle access.
- B. Preliminary Bridge Site Assessment: Include location study, structural options, City water utility connections, environmental requirements, community issues, and construction costs.
- C. Coordinate with state and borough to advocate for and obtain funding for design development and construction of a bridge to carry pedestrians, emergency vehicles, and utility pipes.
- D. Identify funding for all bridge design phases. Begin Conceptual Design and Environmental Permitting. Obtain all necessary approvals and community support for the bridge.
- E. Design Development
- F. Raise funds and construct a pedestrian / utility / emergency vehicle bridge over the Kenai River to Kenai Peninsula College.

26. *New Neighborhood Park for NW Soldotna*

- A. Acquire 1 - 3 acres of land within .3 mile radius of Knight Drive and Kobuk Street, inside or just outside City limits, for a new neighborhood park to serve residents in that area of Soldotna as well as those in the neighborhood north of Knight Drive, outside city limits.
- B. Allocate funds to develop a Master Plan for the new neighborhood park, to include a parking lot, a playground, picnic amenities, and a lawn area.
- C. Allocate funds for design and construction of Phase I Development.



Figure 27. Community Playground at Soldotna Creek Park

Capital Improvement Recommendations - Pedestrian Connectivity

27. Highway Facilities and Crossings

- A. K-Beach Crossing: provide a safe pedestrian crossing of Kalifornsky Beach Road at the Soldotna Sports Center
 - i. Meeting with DOT - communicate issues and recommendations for safety improvements at this location.
 - ii. Work with AK DOT to identify funding and to schedule the installation of a pedestrian crossing with a traffic control light at the Soldotna Sports Center entrance.
 - iii. Support advocacy for this, and other traffic and pedestrian safety improvements at this location.
 - iv. Design and construct trail connections to Tsateshi trail head and to the Soldotna Sports Center in conjunction with the Sports Center and Centennial Park Campground circulation improvements effort.
- B. Sterling Highway Tunnel: provide a crossing under the Sterling Highway @ Tsateshi Trails and KNWR
 - i. Support KNWR and TTA coordinate with AK DOT to conduct a preliminary engineering assessment for a pedestrian tunnel crossing.
 - ii. Support KNWR and TTA to secure funding for the design and construction of the tunnel.
- C. Sterling and Kenai Spur Highway Intersection: Crossing the Sterling Highway and navigating around the Y.
 - i. Acquire trail easements for separated trail connections between Devin Drive and Soldotna Avenue.
 - ii. Pursue acquisition of trail easements on east side of the Sterling Hwy between Mullen Court and E. Redoubt.
 - iii. Secure funding for the design and construction of multi-use paved trails within trail easements.
- D. Sterling Highway: Pedestrian improvements
 - i. Advocate for AK DOT to include design and construction of a separated multi-use paved trail along the north side of the Sterling Highway from Devon Drive to Solid Rock Road, at a minimum.
 - ii. Advocate for the design and construction of a separated (or wider) trail along the south side of the Sterling Highway between the Kenai River Bridge and Fred Meyer.
 - iii. Construct sections of the improved facility as funding and space are made available.
 - iv. Advocate for the design and construction of a multi-use trail to the new middle school location (Skyview).

28. Sidewalks

- A. West Redoubt: Allocate funding for sidewalk extensions to the end of West Redoubt.
- B. Corral Street: Allocate funding to construct sidewalks along the north sides (or both) of Corral Street, between Soldotna High School and Binkley Street.
- C. Knight Drive: Allocate funding to construct sidewalks along both sides of Knight Drive
- D. Shady Lane: Allocate funding for construction of sidewalk on north side.
- E. Devin Drive: Allocate funding for a sidewalk along the north side of Devin Drive, east of the Sterling Highway.
- F. Beluga Avenue:
 - i. Allocate funding for a sidewalk along the north side of Beluga from S Sterling Street to Kobuk Avenue.
 - ii. Allocate funding for sidewalks along the north side of Beluga between Binkley Street and Birch Street.
- G. Riverview Avenue:
 - i. Allocate funding for a sidewalk along the north side of Riverview between Binkley and Fireweed Street.
 - ii. Allocate funding for a sidewalk along the north side of Riverview between Kobuk and S Sterling Street.
- H. West Little:
 - i. Allocate funding for a sidewalk along the north side of Little Avenue between Binkley and Henrich Streets.
 - ii. Allocate funding for a sidewalk along the north side of Little Avenue between O'Neill Street and Kobuk.

Capital Improvement Recommendations - Pedestrian Connectivity (continued)

29. Multi-Use Community Connectors

A. Boardwalks and Fish Stairs-

- i. Construct a boardwalk connecting the existing Visitor Center to the Centennial Park boardwalks.

B. South Fireweed Pedestrian Connections

- i. Design and construct paved trail in the Fireweed ROW between Redoubt Avenue and Riverview Avenue.
- ii. Design and construct a paved trail in the Little Avenue ROW between O'Neill and Henrich Streets
- iii. Design and construct a paved trail in the Fireweed ROW between Riverview and Kobuk.
- iv. Design and construct a paved trail in the Riverview Avenue ROW between Fireweed and Stacy Drive

C. Wilson Lane Multi-Use Trail

- i. Redesign road to include bike lanes or a separated multi-use trail on the south side of the street between Kobuk and Binkley.
- ii. Secure funding to reconstruct the road and/or construct the trail.
- iii. Work with property owners to acquire an easement to extend the Wilson Lane trail from Kobuk to Riverside.
- iv. Allocate funding to design and construct the Wilson Lane Trail extension to Riverside Drive.

D. Foothill Road - Allocate funding to design and construct a multi-use paved trail in the Foothill Road ROW between E Marydale Avenue and Kenai Avenue, in accordance with the Karen Street Park Master Plan.

E. Riverside Drive

- i. Allocate funding to design and construct a separated multi-use paved trail on the east side of the Riverside Drive ROW, between the Sterling Highway and Kobuk Street.
- ii. Designate Riverside Drive as a "Unity Trail" route through Soldotna.

F. School Access - Connectivity Improvements to the Schools

- i. Encourage and support the Kenai Peninsula School District to construct a paved trail for safe pedestrian connectivity along the east edge of school property from Redoubt Avenue to Marydale Avenue, with pedestrian connections to Sunrise Avenue, Arlington Avenue, Corral Street, and to each school.

- ii. Pursue trail easements between the school trail and Katmai Avenue, Rockwell Avenue and Vine Avenue.

- iii. Coordinate with the Kenai Peninsula Borough to identify the best route for a trail between Shady Lane and Soldotna Elementary School, via Barbara Erickson Street ROW and/or KPB property.

- iv. Allocate funding to assist with design and construction of Barbara Erickson Street trail.

- v. Work with land owner to provide future pedestrian access between West Riverview Avenue (near Daisy Lane) and Rose Garland Road.



Figure 28. West Redoubt Avenue is very busy after school

Capital Improvement Recommendations - Pedestrian Connectivity (continued)

- G. Aspen Park Connector Trail - design and construct a trail between Aspen Park and Columbine Street in the existing ROW off the northwest corner of the park.
- H. River Park Connectivity Trails:
 - i. Require land owners to provide a trail easement between the Pioneer Street ROW and the Mullen Drive pedestrian easement.
 - ii. Allocate funding for the design and construction of a trail from the Soldotna Creek Park Pavilion through Soldotna Creek Park (south of the Kenai Watershed Forum), through the Pioneer Street ROW, and east to the Mullen Drive Trail. Provide "River Route" signs from Soldotna Creek Park to Swiftwater Park via Lingonberry Lane.
 - iii. Work with land owner to identify a trail easement to connect the end of Binkley Circle to Birch Place (Soldotna Creek Park trail loop) as an alternate route for pedestrians (not traveling along the Sterling or the boardwalk).
 - iv. Pursue public trail opportunities near the Kenai River between Soldotna Creek Park and the Bridge.
- I. Funny River Road:
 - i. Require future road design projects to include a paved shoulder and a separated pedestrian trail along Funny River Road within City limits.
 - ii. In partnership with the Kenai National Wildlife Refuge, obtain funding for a multi-use gravel trail located generally along north border of the refuge between Ski Hill Road (trail head) and Funny River Road (trail head).
- J. Birch Ridge Trails:
 - i. Work with land owner to plat trail easements for multi-use pedestrian connections between the North Point Street ROW and Boundary Street ROW, Long Drive, and the Sterling Highway ROW or On Par Lane via State of Alaska Division of Forestry property.
 - ii. Allocate funding to design and build natural surface trails in these easements.
- K. Karen Street Park Pedestrian Connections:
 - i. Allocate funding for design and construction of bike lanes or a separated multi-use trail on Marydale between Kenai Spur Highway and Foothill Road with connection to Karen Street Park according to the Master Plan.
 - ii. Park Avenue extension - Seek to acquire a trail easement for pedestrian connectivity to Karen Street Park from the Park Avenue intersection eastward to park property.
- L. Knight Drive:
 - i. Add bicycle lanes along both sides of Knight Drive.



Figure 29. Popular multi-use paved trail near Soldotna High School

Chapter 5 - Facility Profiles

FACILITY PROFILES

<u>ARC Lake Park</u>	<u>41</u>
<u>Aspen Park</u>	<u>42</u>
<u>Centennial Park</u>	<u>43</u>
<u>Farnsworth Park</u>	<u>45</u>
<u>Karen Street Park</u>	<u>46</u>
<u>Parker Park</u>	<u>48</u>
<u>Riverview Park</u>	<u>49</u>
<u>Rotary Park</u>	<u>50</u>
<u>Soldotna Creek Park</u>	<u>51</u>
<u>Soldotna Community Memorial Park</u>	<u>53</u>
<u>Soldotna Sports Center</u>	<u>54</u>
<u>Sunrise Park</u>	<u>56</u>
<u>Swiftwater Campground</u>	<u>57</u>
<u>West Redoubt Open Space</u>	<u>58</u>



Other Facilities: Soldotna Historical Society, Peninsula Sled Dog Racing Association Trail Head

School Facilities: Soldotna High School, Skyview High School, Soldotna Middle School, Soldotna Elementary School, Soldotna Montessori Charter School, Redoubt Elementary School, K-Beach Elementary School

<u>Multi-Use Paved Trails</u>	<u>64</u>
<u>Natural Surface Trails</u>	<u>66</u>
<u>River Access</u>	<u>67</u>
<u>Bicycle Lanes and Routes</u>	<u>68</u>
<u>Sidewalks</u>	<u>69</u>

A.R.C. LAKE PARK

MASTER PLAN



COMMUNITY FINDINGS

The trails at A.R.C. Lake Park are groomed during the winter to connect skiers to the Tsalteshi Trail system and into the Kenai National Wildlife Refuge. The community requests restrooms, trail improvements and additional multi-use trails in the park for year-round use.

Residents are excited to have maintained ice on the lake, but would like more predictable and reliable skating conditions, especially for weekend use.

RECOMMENDATIONS

FACILITIES - Establish a natural surface multi-use trail system between the parking lot and the refuge, via the north side of A.R.C. Lake. Provide additional trash cans, picnic tables, benches, and a rest room.

OPERATIONS - Continue maintaining ice rink. Establish an ice treatment schedule to prepare the ice for weekend use and scheduled events.

PROGRAMMING - Allow the park to be utilized and/or rented for scheduled skating lessons, broom ball games, private gatherings, and other social events during winter months.

STATISTICS

A.R.C. Lake Park

Sterling Highway

Classification: Community Park

Deeded: 1973

Size: 22.25 Acres

Parking: Informal gravel parking area

Lake Access: yes

Outdoor Ice: Lake is plowed and watered for informal outdoor ice.

HISTORY & DESCRIPTION:

A.R.C. Lake Park was named after the Alaska Road Commission and was developed as a park in the early 1980's.

It is a City of Soldotna out-holding located 1.5 miles south of Soldotna, between the Sterling Highway and A.R.C. Lake.

The entrance drive, off the Sterling Highway, leads into the gravel parking lot near the lake edge. Trails connect the parking area to adjacent trail systems in the KNWR and Tsalteshi Trail system.

During winter 2012-2013, the City of Soldotna maintained an ice rink on the lake and provided a burn barrel for the open public.

ASPEN PARK

MASTER PLAN



STATISTICS

Aspen Park

335 North Aspen Drive

Classification: Neighborhood Park

Size: 2.13 Acres

Wooded Area: Mostly wooded, with informal walking paths to adjacent areas.

Playground: circa 1980

Picnic Tables: several

Benches: several

Parking: 3 spaces

HISTORY & DESCRIPTION:

Aspen Park is located in a multi-family residential neighborhood, with commercial development to the east. It is a primarily wooded park containing a small playground, walking paths, several picnic tables, a well house and a small cleared area previously used for sand volleyball.

COMMUNITY FINDINGS

The Aspen Park playground is heavily used by the neighborhood, but its location in a cold, dark, wooded area makes it less pleasant than other playgrounds.

Existing footpaths and picnic tables throughout the wooded area of the park are also used by neighborhood residents.

In 2011, Friends of Aspen Dog Park partnered with Sorptomist International to develop a dog park design and to raise money for its construction. The dog park design includes a fenced area in the southern half of Aspen Park with walking paths, benches, trails, lights, water source, parking, and a gated staging area at the entrance. The layout of the dog area allows for walking paths around the outer edges of the park. The community has expressed there is a strong need for a fenced dog park in Soldotna, and support this location. Many dog owners and groups would also like such an area than can be rented for dog exercising, training, or socializing events.

RECOMMENDATIONS

FACILITIES

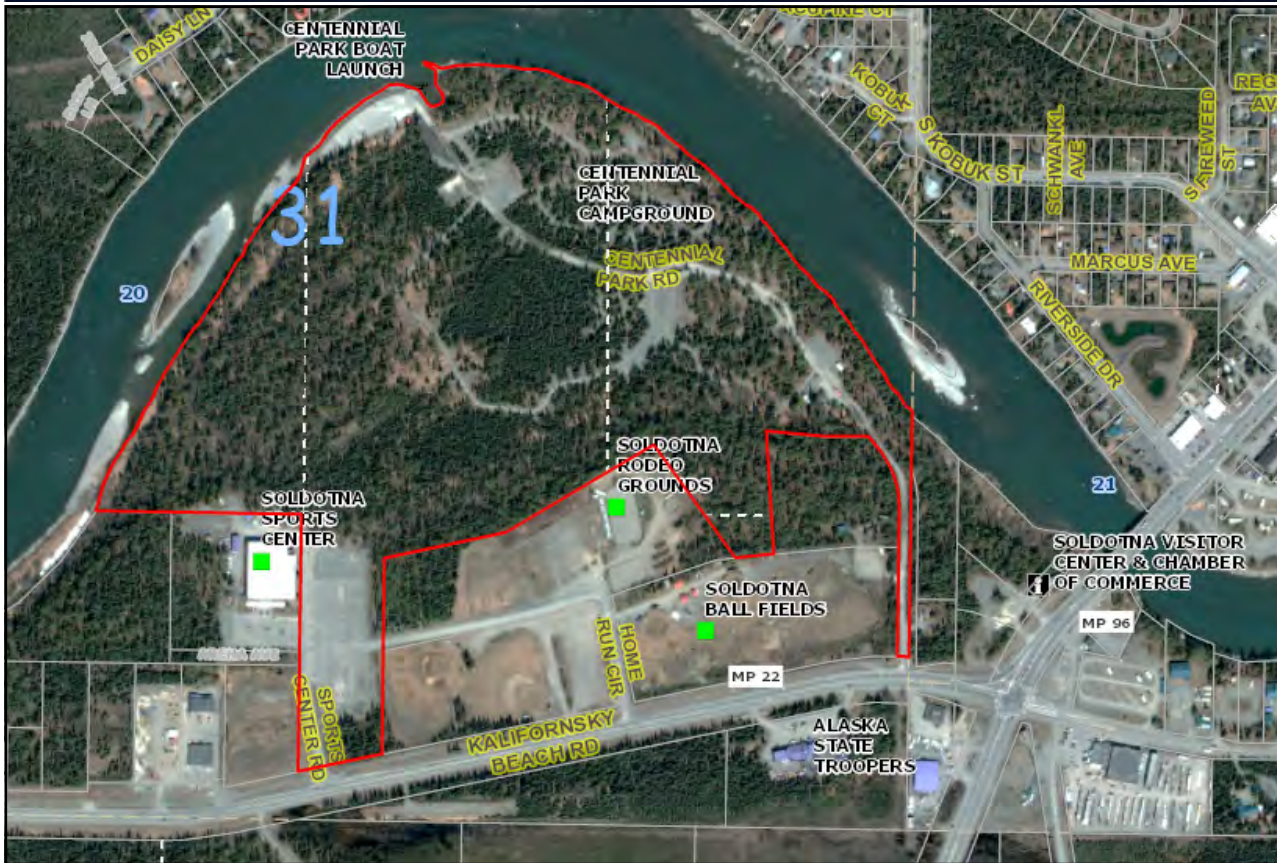
- Provide funding to construct a fenced dog park and parking lot, generally as shown in the proposed dog park site plan prepared by "Friends of Aspen Dog Park".
- Provide funding to upgrade and expand the playground.
- Provide a restroom near the playground.

OPERATIONS - Thin trees to allow more sunlight into the playground area.

PROGRAMMING - Provide for set rental times at the dog park for use by individuals or groups that need a controlled space for their dog(s).

CENTENNIAL PARK

MASTER PLAN



CENTENNIAL PARK CAMPGROUND

349 Centennial Park Road

Classification: Special Use Park

Deeded: 1966

Size: 121.2 Acres

Campsites: 250+

River Access: 25 sets of stairs to the river, (2) 85 l.f. fishing platforms, (one universally accessible)

Fish Cleaning: 40 foot long 8-station cleaning station with lighting and running water, built in 2012.

Boat Launch: 2

Restrooms: 1

Pavilion: 1

Parking: One large paved parking area and two gravel parking areas.

Walking Paths: 6000+ L.F. boardwalks and gravel paths, in addition to the campground drives.

HISTORY & DESCRIPTION:

Centennial Park is a bit of “wilderness in the city”. It is a very large wooded park with over a mile of frontage on the Kenai River and separated from the adjacent sports center by a steep wooded slope. The campground was first built in the early 1980’s, was expanded to include boat launch and additional campsites throughout the 80’s. New restrooms and fish cleaning stations were provided in 2011. Fish stairs and boardwalks were re-designed and installed in _____, improving habitat protection along the river.

During fishing season, the park is overflowing with visitors, but during the shoulder seasons, many locals use it for camp-

COMMUNITY FINDINGS

Centennial Park Campground is a beautiful park that is quiet 10 months of the year but enjoyed by residents year round. During peak fishing season, the campground is packed and busy with fish-related activities. At this time there are never enough fish cleaning stations or rest rooms.

Additional facilities and maintenance are needed such as: fish cleaning stations, fish stairs downstream of existing stairs, showers, restrooms, and trail connections to adjacent areas such as the Visitor Center and the Sports Center.

Safety is a concern with the location of the park entrance on K-Beach Road, so close to the Sterling Highway intersection.

Habitat protection is a concern during peak fishing season. Foot traffic along the vegetated banks causes trampling and erosion. Fishing

Residents want more opportunities for outdoor recreation during the “off-season”, such as additional trails and winter grooming of the road and trail system. The community supports a trail connection from Centennial Trail to the Sports Center and requested both stairs and a hill traverse.

RECOMMENDATIONS

FACILITIES

- Construct boardwalk connecting to the Soldotna Visitor Center boardwalk.
- Assess stream bank habitat downstream of fish stairs and add stairs if needed and as appropriate.
- Relocate and redesign the entrance drive to improve safety at K-Beach Road. Consider an alternate route that utilizes a controlled intersection at the Soldotna Sports Complex entrance and traverses the hill behind the rodeo grounds.
- Construct a trail connection from the end of Centennial Trail to the Sports Center, providing both stairs and hill traverse routes up the slope. Provide full loop connection to the Historical Society and to the entrance drive for pedestrians.
- Provide public water / sewer to at least 50% of the camp sites. Provide flush toilets and coin operated showers.
- Pave the main driveway through the campground.
- Develop a long term plan for pedestrian and automobile circulation to the campground, including additional trail loops within the park.

OPERATIONS

- Increase peak season maintenance and fishing regulations.
- Provide trail grooming during winter.
- Establish a new rate structure for campground fees for peak, shoulder and off-season use.
- Develop a Master Plan for operations, maintenance and facilities improvements in the Park. Considerations to include: enforcement of fishing rules, habitat protection and restoration, site circulation, traffic control, fish waste management.

PROGRAMMING

- Offer classes and events in the park during the off-season.

FARNSWORTH PARK

MASTER PLAN



COMMUNITY FINDINGS

Farnsworth is classified as a neighborhood park, but also functions as a destination for the greater Soldotna area. The pavilion is frequently used for birthday parties and other gatherings.

The location, setting and available facilities are all contributing factors to its popularity.

Many of the user groups who rent the pavilion ask if there is power available.

STATISTICS

Birch Street

Classification: Neighborhood Park

Size: 1.237 Acres

Playground: 2011

Benches: 3

Deeded: 1972, from Dolly Farnsworth

Open Fields: 1

Pavilion: 1

Parking: Paved parking lot with 12 spaces

Restrooms: 1

Picnic Tables: 4

HISTORY & DESCRIPTION

Farnsworth Park is centrally located in a sunny warm setting, surrounded by mixed use. The original parking, pavilion and playground were constructed in the mid 1980's.

The playground equipment was replaced in 2010. The parking lot, trails, benches, pavilion and restrooms are in good shape.

RECOMMENDATIONS

Continue to maintain and operate the park with cleaning, up-keep and maintenance as needed to address the heavy seasonal use associated with its location and popularity.



Picnic pavilion and playground at Farnsworth Park

KAREN STREET PARK

MASTER PLAN



BMX track at Karen Street Park

STATISTICS

Karen Street Park

245 Karen Street

Classification: Neighborhood Park

Size: 2.82 Acres, total 6.68 Acres (11 Parcels)

Skate Park: Paved, fenced, built in 2002

BMX Track: Designed & Built 2012

Parking: Informal gravel

HISTORY & DESCRIPTION:

Karen Street Park is composed of several parcels purchased or obtained by the City of Soldotna for recreation use. At one time (1999-2003) there was a sledding hill at this location.

In 2000, a paved, fenced skate park was designed and constructed. The City of Soldotna hosts a popular annual competition at the skate park. Skate park ramps and boxes are heavily used by BMX bikes and scooters.

BMX track was designed and constructed in 2012-2013.

The City of Soldotna stores snow on the park property.

KAREN STREET PARK

MASTER PLAN

COMMUNITY FINDINGS

The Skate Park is primarily used by a responsible, enthusiastic group of BMX bike and scooter riders. The age range and number of riders is increasing as the popularity of the sport grows. With this growth, a larger paved area and a wider selection of equipment is needed, especially for competitions.

There is interest in the skate park community to create a rider development program and raise money for improvements at the park.

The equipment is unsafe when it is wet making it unusable many days of the year. A cover would greatly extend the availability of this facility. Some equipment is showing wear and needs repair or replacement.

Safety rules, such as “no glass” need enforcement. Surveillance equipment to monitor or deter occasional poor behavior was suggested. The single use and location of this park make it difficult to monitor behavior.

A playground is needed for the neighborhood on this side of the highway. Additional facilities at Karen Street Park would increase and diversify park use.

An “active”, more programmed community park for kids and young adults is needed in Soldotna. The size and location of Karen Street Park is compatible with the level of activity and noise that a community park creates.

RECOMMENDATIONS

FACILITIES

- Assist with completion of the BMX track.
- Investigate opportunities to acquire and clean up adjacent contaminated parcels for use as open space at Karen Street Park.
- Skate Park: Expand the pavement area, add new equipment and construct a cover over the skate park, using clear roof material. Repair or replace existing equipment, as needed. Coordinate with user groups when designing skate park facilities.
- Provide restrooms during summer months.
- Add parking, trail, picnic area, basketball court, a playground, benches, an open lawn area, and a restroom.

OPERATIONS

- Change the classification of Karen Street Park to “Community Use”.
- Develop a Master Plan for Karen Street Park to include additional facilities such as a playground, a trail to the adjacent neighborhood, parking, rest room, basketball hoop, ball wall, and a large lawn area (soccer field) Funding considerations can include selling some of the parcels.

PROGRAMMING

- Continue to sponsor an annual skate park competition in partnership with The Tribe.
- Partner with The Tribe to support rider development training programs and classes and to provide indoor skate park events during winter months.
- Partner with The Tribe and the Fairbanks BMX club to prepare the BMX track and offer a qualifying BMX event in Soldotna.



Karen Street Skate Park

PARKER PARK

MASTER PLAN



STATISTICS

Parker Park

145 West Park Avenue

Classification: Community
Park

Deeded: DATE

Size: 2.69 Acres

Walking Paths: Paved

Dog Bag Dispensers:

Trash Receptacles:

HISTORY & DESCRIPTION:

Parker Park is located adjacent to Soldotna Senior Center.

It was deeded to the City of Soldotna by Soldotna Senior Center. The park was designed and partially constructed in 1990??

COMMUNITY FINDINGS

Parker Park offers a quiet reflective space for strolling, eating lunch from your parked car, walking a dog, or resting on a bench. The trail system is maintained during the winter months. Facilities for specific programmed uses are not the intended use for this park. Other than a gazebo for special events, the park is seen a passive use area.

Many people park in the on-street parking spaces to eat lunch, talk on the phone, or simply enjoy the view of the park while on a break during the day.

The original plans for Parker Park included a gazebo for weddings and other private events.

RECOMMENDATIONS

FACILITIES

- Construct Gazebo as per park design.
- Provide one fitness kiosk along the existing trail, away from main gathering area.

OPERATIONS

- Maintain trails during the winter for walking.
- Public and private facility scheduling and rentals
- Cooperate with the Soldotna Senior Center to determine the best use of Parker Park in the decades to come.

PROGRAMMING

- Promote partnerships with the City of Soldotna, the Soldotna Senior Center and Central Peninsula Hospital for fitness and health classes and programs that utilize parks and trails.

RIVERVIEW PARK

MASTER PLAN

STATISTICS

Riverview Park

345 West Riverview Avenue

Classification: Neighborhood Park

Deeded: 1971

Size: 2.4 Acres (8 parcels)

Playground: circa 1985

Parking Area: Paved, 2 spaces

Wooded Area: There are picnic tables along a natural surface path that connects the playground area to the animal shelter and to Kobuk Street.

HISTORY & DESCRIPTION: This park is wooded, with a small playground, parking spaces, bicycle rack, benches, with picnic tables and trash receptacles. It is located along a quiet residential street and enjoys light to moderate use by the local neighborhood.

Some of the wooden benches and picnic tables are deteriorating and in need of replacement.



COMMUNITY FINDINGS

The playground is primarily used by neighborhood families.

Local residents enjoy walking through the woods and sitting at the picnic tables.

RECOMMENDATIONS

FACILITIES

- Upgrade or resurface trails as needed to allow for more use, year round.
- Upgrade and expand playground
- Provide restroom
- Replace or repair aging picnic tables and benches.



Picnic Areas along wooded path



Existing playground at Riverview Park.

ROTARY PARK

MASTER PLAN



STATISTICS

Rotary Park

884 Funny River Road

Classification: Special Use, leased by City

Leased: since mid 1990's

Size: 52 Acres

River Access Stairs: 2

Boardwalk: 650 l.f.

Parking: Gravel parking lot for ~40 vehicles

HISTORY & DESCRIPTION:

Natural area along the Kenai River.

Mid 1990's - Parking area and original 600 ft boardwalk were constructed.

1997 - Upper area fish access improvements

2004 - Lower area fish access improvements.

COMMUNITY FINDINGS

Rotary Park is a leased parcel located along the Kenai River and used for fishing access. It is a wooded area with a steep bank to the river edge.

This area is very popular during peak fishing season. The parking, trails, stairs, fish access, fish cleaning facilities meet the needs of the user groups.

The grassy banks are often used for day camping and show wear to the natural habitat. Designated areas would help provide for this need without causing damage to vegetation and soils.

RECOMMENDATIONS

FACILITIES

- Pave the parking lot and install automated pay station

OPERATIONS

- Improve fishing enforcement and bank trampling
- Conduct annual habitat assessment - provide access restrictions and restoration as needed to maintain natural habitat.

SOLDOTNA CREEK PARK

MASTER PLAN



Picnic Areas along wooded path



Accessible boardwalk to the Kenai River

STATISTICS

Soldotna Creek Park

44149 Sterling Highway

Classification: Community Park Size: 13.62 Acres

Deeded: 1980, Alaska Department of Transportation

River Access: 2,300 l.f. boardwalk, 300 l.f. accessible ramp, 12 river access stairs

Open Grass Fields: 1 large lawn area Restrooms: 1, year round

Playground: 2011

Band Shell / Stage: 1

Pavilions: 3

Picnic Tables: 6

Walking Paths: YES

Benches: several

Parking: Paved parking for 80-100 vehicles

HISTORY & DESCRIPTION:

Soldotna Creek Park was originally the 6 acre wooded portion on the east side of the park , while the 8 acre parcel on the west was owned and operated by the State of Alaska Department of Transportation as a material storage site. In 1980, DOT deeded the parcel to the City of Soldotna and it was capped with topsoil and seeded as a large open lawn. A parking area was added and it became known as DOT Park. In 2007, the City of Soldotna developed a Conceptual Plan for combining the DOT parcel with the existing Soldotna Creek Park parcel to become one large community park.

A new playground, parking lot, drop off area and a new entrance were built in 2010, after a land exchange provided more park frontage along the Sterling Highway.

One large band shell, two picnic pavilions, a Veteran's Memorial, permanent rest rooms, trails, lighting and landscaping were constructed in 2013.

COMMUNITY FINDINGS

Residents and visitors to the Soldotna area love the Kenai River. Soldotna Creek Park provides a valuable connection to the river for everyone to enjoy it's beauty and bounty.

Community input shows that large community events held at Soldotna Creek Park are very popular with the residents of the greater Soldotna area. Live music is an important component of these festivals. A large pavilion with a stage would be used for live music events throughout the summer and would also provide a venue for larger family gatherings, such as weddings.

People appreciate having a large open lawn available for a variety of events and activities, such as festivals, markets, playing Frisbee, running dogs, family gatherings, games and other activities.

RECOMMENDATIONS

FACILITIES

- Provide a new park entrance sign, interpretive signs, landscaping and a small gazebo, as per plans.
- Thin the trees in the older picnic area to provide more light and warmth.
- Design and construct a trail to connect the main park loop trail with the Pioneer Street ROW through the woods south of the Kenai Watershed Forum.

OPERATIONS

- Increase funding to ensure there are the resources and equipment necessary to provide a good quality lawn area, attractive landscape beds at the entrance, and a photogenic rose garden.
- Adjust equipment and personnel funding to provide for an ice rink / ice trail, and trail grooming during winter months.
- Provide for education and enforcement of fishing regulations and stream bank habitat protection rules.
- Offer support for the purchase of adjacent property for public and/or quasi public use. Assist with site planning to minimize the potential for added fishing pressure to this area of the Kenai River.

PROGRAMMING

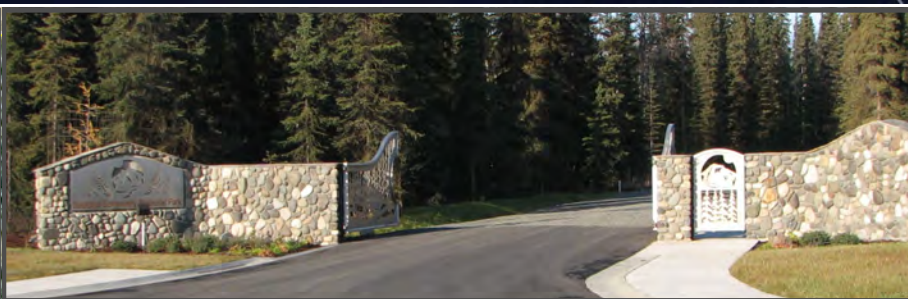
- Continue to partner with other organizations to host winter events, festivals, markets at Soldotna Creek Park.



New picnic shelter at Soldotna Creek Park.

SOLDOTNA COMMUNITY MEMORIAL PARK

MASTER PLAN



Entrance gate at Soldotna Community Memorial Park

COMMUNITY FINDINGS

The community enjoys walking and driving through Soldotna Community Memorial Park all months of the year. They appreciate the look and feel of the park and its role as a beautiful community park as well as a cemetery.

Residents consider this an important community asset and are proud of their ability to overcome adversity and find a location and design that is agreeable to the whole community.

STATISTICS

Soldotna Community Memorial Park
West Redoubt Avenue

Classification: Special Use

Deeded: 2010

Size: 17 Acres

Walking Paths: 1000 L.F. Gravel Footpaths

Benches: 1

Maintenance Building: 1

HISTORY & DESCRIPTION:

Soldotna began looking for a cemetery location in the 1990s. Controversy kept the city making progress until 2011 when the West Redoubt site was selected and a design task force was created to ensure neighborhood support.

Soldotna Community Memorial Park was constructed during the summer of 2011.

RECOMMENDATIONS

FACILITIES

- Coordinate with adjacent land owners to provide trail connections to adjacent neighborhoods and trail facilities, such as the Marydale multi-use trail.
- Design and construct a pavilion as per approved conceptual design.
- Construct additional islands along the memorial walk as needed to accommodate memorial plaques.
- Design and construct additional burial grounds, columbaria, and trails as needed to meet community needs.

OPERATIONS

- Continue the memorial plaque purchase program. Plow the loop driveway through the park during winter months.

PROGRAMMING

- Encourage and support private and public events at Memorial Park. Unless serious issues arise, continue to allow year round pedestrian and vehicular access through the park.

SOLDOTNA REGIONAL SPORTS COMPLEX

MASTER PLAN



Soldotna Regional Sports Complex.

SOLDOTNA REGIONAL SPORTS COMPLEX

Kalifornsky Beach Road

Classification: Special Use Facility Deeded: Constructed in 1983

Sports Center Building: 53,000 S.F. Building (1983), 8.711 Acres

Indoor Ice: Olympic Size Rink with bleachers, seating capacity: 2,200. Outdoor Ice: Boards & Warming room

Conference Rooms: 4,280 s.f.

Office Space: 3,000 s.f.

Retail Tenant Space: 700 s.f.

Restrooms: 4

Racquetball Courts: 2

Locker Rooms: (2) locker rooms, (4) team rooms, (1) 700 s.f. dry team room / breakout room

Parking: Large, paved parking area and medium gravel parking area.

HISTORY & DESCRIPTION:

The Soldotna Sports Center was constructed in 1982 to provide an indoor ice arena, large event space, conference rooms and other sports amenities for the central peninsula.

Figure Skating, High School hockey, the Kenai Peninsula Hockey Association, the Rusty Blades, and the Kenai River Brown Bears Junior A Hockey Team all utilized the ice facilities at the Sports Center.

The conference rooms can be divided into 3 separate areas. A kitchen facility is located adjacent to the conference rooms.

COMMUNITY FINDINGS

The Soldotna Sports Center is the most frequented recreation facility in Soldotna, and is heavily used for hockey, figure skating, parties, fundraisers, and area wide trade shows, all year round.

Community input shows that it no longer meets recreation or conference room needs for the greater Soldotna area, and that the aging facility is in need of repair and expansion to adapt to growth and changing demographics.

With an increase in competitive sports and healthier, more active lifestyles, places for indoor recreation are in high demand, especially during the long winter months. Young families, older residents, athletes and teens are all looking for places and facilities to help them stay active.

The conference room proximity to the ice arena is incompatible and undesirable for some events and user groups who desire a facility with its own rest room facilities and entrance. Hockey event noise and odors can also affect the ambiance of the conference room space. The kitchen facility is inadequate for most user groups and needs to be expanded.

RECOMMENDATIONS

FACILITIES

- Renovate and expand the Soldotna Regional Sports Complex building to include: a public lobby/information/meeting space; a lounge/game room for community use; a kitchen & small event area; an outdoor patio; a flexible, multi-purpose indoor recreation space that accommodates walking/running, soccer/baseball/track practice, portable skate park equipment, fitness training, and large events. Maintain the current level of conference room space until conference facilities are provided elsewhere in Soldotna, at which time, a new use can be incorporated into the former conference room area. The Master Plan should also consider pedestrian connectivity to and from the building.
- Develop an overall site Master Plan for improved site circulation, parking, access and egress, pedestrian safety, and connectivity to adjacent areas such as Tsalteshi Trails, the Unity Trail, ball fields, rodeo grounds and Centennial Park. Explore options to re-route the entrance to Centennial Park via a controlled intersection at the Sports Complex entrance.

OPERATIONS

- Prepare a circulation assessment of vehicular ingress and egress patterns to improve safety during the summer months and improve traffic efficiency after large events.
- Increase funding for maintenance and janitorial services.
- Continue to house Parks and Recreation offices at this location.
- Add staff, as necessary, to support the new facility and programming.
- Funding - Advocate for establishing a Borough Recreation Service Area to support operations and maintenance of facilities that serve the greater Soldotna area.
- Funding - Incorporate a user fee structure or membership program for use of the new, expanded sports center.

PROGRAMMING

- Ice Rink - Continue to partner with Kenai River Brown Bears, KPHA, KPBSD, Rusty Blades, and other hockey organizations to provide ice time for practices, games, and training clinics.
- Community Schools: continue to expand and improve the course offerings.
- With new facility, expand coordination with KPBSD, CPGH, Kenai Peninsula College, Boys and Girls Club, KPHA, and other local organizations to offer classes and events at the Sports Complex.

SUNRISE PARK

MASTER PLAN



RECOMMENDATIONS

FACILITIES

- Design and construct a multi-purpose loop trail around the perimeter of the lawn with connections to Sunrise and Emerald Avenues, as shown in the Master Plan.
- Small playground with picnic facilities as shown in Master Plan.
- Parking and restroom near playground, perhaps in the SW corner of the park, as shown in Master Plan.

OPERATIONS

- In cooperation with the neighborhood and user groups, develop a Master Plan for the long term vision for this park.

Sunrise Park

332 West Sunrise Ave

Classification: Neighborhood Park

Deeded:

Size: 4.59 Acres

Open Grass Fields: 1 large lawn area

Parking: Informal along street

HISTORY & DESCRIPTION:

Sunrise Park is a large courtyard style park in a residential neighborhood. One side of the park abuts Sunrise Avenue. The other three sides border the rear lot lines of single family and multi-family housing.

The park includes a very large open lawn area, trees on the perimeter, a fence along Sunrise Avenue, and a baseball backstop in the Northeast corner.

Single family residential homes surround the park on 3 sides and multi-family borders the park to the south.

COMMUNITY FINDINGS

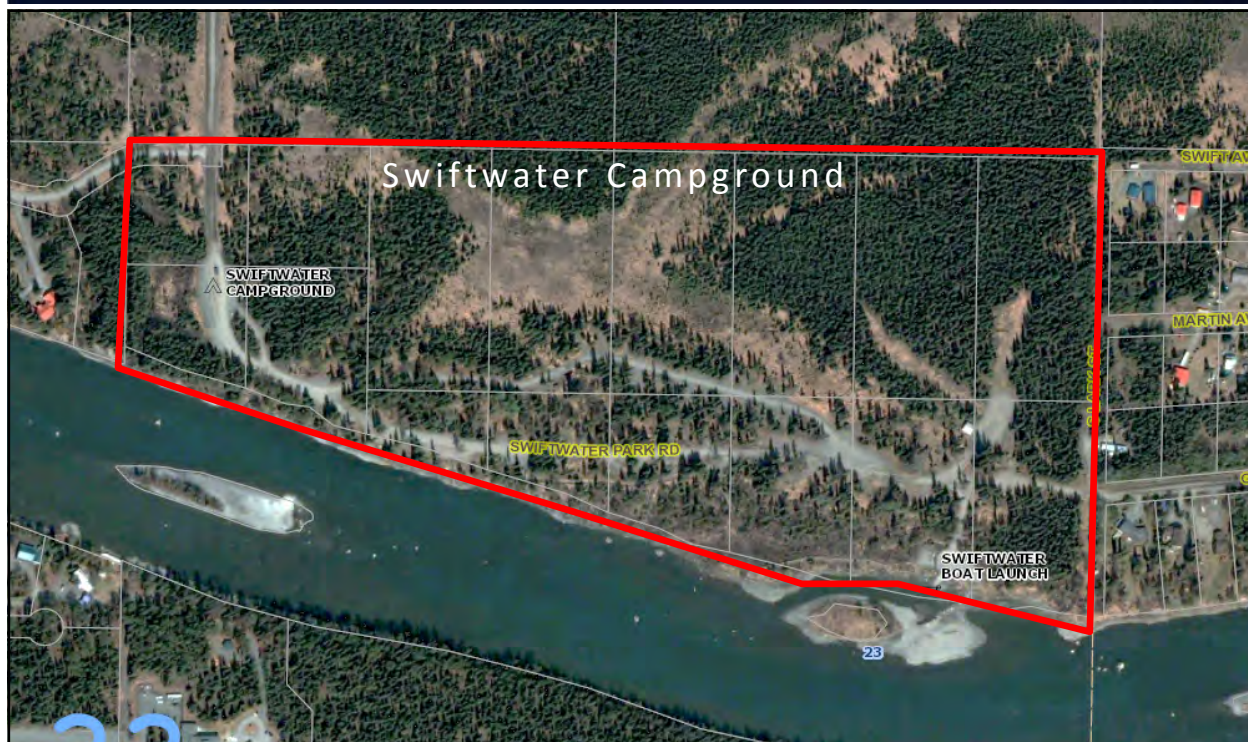
The community uses this lawn area for general neighborhood activities such as kite flying, Frisbee throwing, and general running around. It is also used by local teams for soccer, baseball, and Lacrosse practice.

There is no parking lot at the park. Cars park on the lawn along the north boundary of the park.

The neighborhood would like a restroom, picnic area, a small parking area, and a small playground at the park.

SWIFTWATER CAMPGROUND

MASTER PLAN



COMMUNITY FINDINGS

Residents would like to be able to hike, ski or snowshoe around in our parks during the winter.

More fish access is needed to keep people from trampling the shore during peak fishing season.

Run for the Kenai foot race is routed through Swiftwater Park.

RECOMMENDATIONS

FACILITIES

- Construct additional campground loops in the NE corner of the park, as designed.
- Bank restoration and new fish access stairs (2-3) and boardwalks along the Kenai River.

OPERATIONS

- Open the park to walking or skiing during the winter. Plow or groom the entrance drive.

PROGRAMMING

- Continue to allow races through the park. Promote the use of the park during the off-season.

STATISTICS

675 Swiftwater Park Road

Classification: Special Use Deeded: 1971

Size: 16 parcels = 59.88 Acres 2 island parcels
= .62 Acres

Campground: 40

Boat Launch: 1

River Access Stairs: 6

Pavilion: 1

Elevated Fish Walks: 400 ft

Restrooms: 1

Parking: Two gravel parking areas

Walking Paths: Boardwalks and trails.

HISTORY & DESCRIPTION:

Wooded campground and fishing with frontage along the Kenai River.

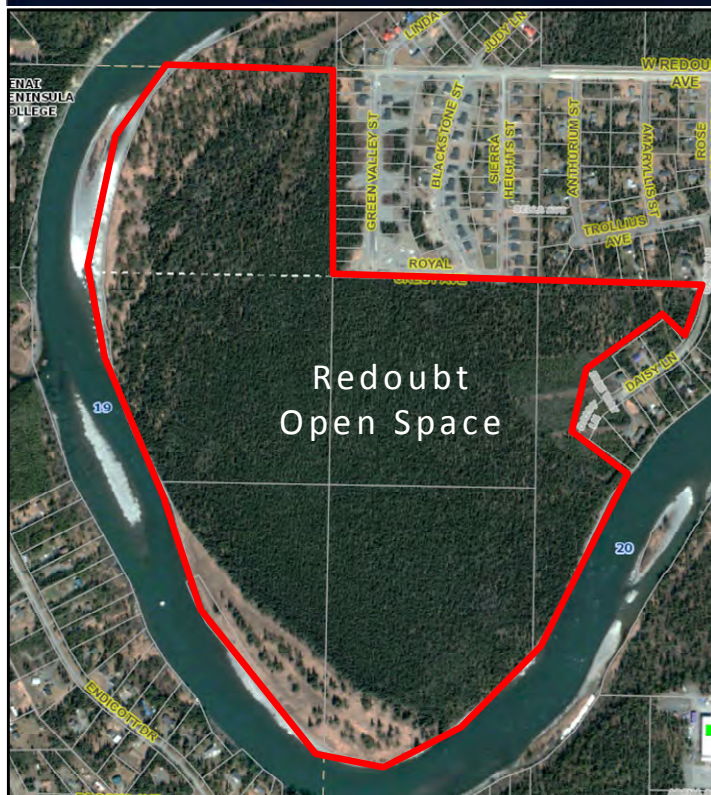
1980's - Campground and boat launch

Late 1990's - early 2000's - Bank restoration and fish access.

2002 - 20 campsites added.

REDOUBT OPEN SPACE

MASTER PLAN



STATISTICS

Redoubt Open Space

West Redoubt Avenue

Classification: Special Use Park

Deeded: 1985

Size: City of Soldotna: 103.21 Ac res
Acres

AK DNR: 110.87

Wooded Area: Information walking paths

Parking: Unofficial parking in Redoubt Avenue ROW

HISTORY & DESCRIPTION:

This beautiful wooded area was originally home to Alaska Natives who lived along the Kenai River thousands of years ago. It still contains informal paths that have provided routes between Soldotna neighborhoods and the river for many years. One small area of the river bank is open to fishing and is accessed by boat or by foot via this parcel.

A timber "buck rail" fence was installed around the cultural

COMMUNITY FINDINGS

Many runners, including school cross-country teams, use the existing trails in this park. Residents of the adjacent neighborhoods walk the trails to enjoy the woods or access the fishing area.

More and more people are driving to the end of West Redoubt, parking and walking in to fish for Sockeyes along the Kenai River.

This park contains important cultural and natural features that need protection and provide great opportunities for interpretive facilities.

Adding facilities, such as a parking area and trails, needs to carefully consider impacts to the neighborhoods and the sensitive natural and cultural resources in this area.

Community input shows that there is a need for more variety in the trails, that single track mountain bike trails and simple hiking trails are desired within the city limits.

RECOMMENDATIONS

FACILITIES

- Cultural interpretive trails and signage.
- Recreation and neighborhood connectivity trails, trail heads, signage and parking.
- Fishing access infrastructure and habitat protection.

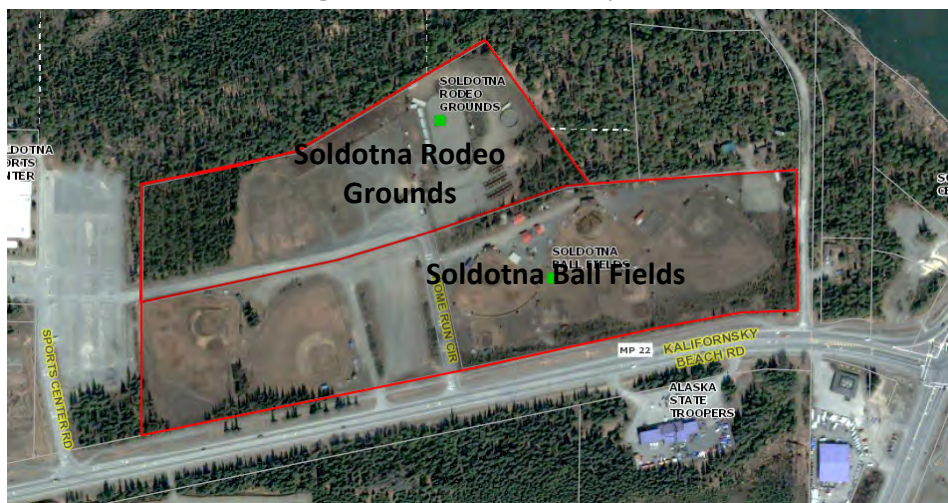
OPERATIONS

- Enforce fishing regulations to protect stream bank habitat.
- In coordination with Kenai Peninsula College, the Kenaitze Indian Tribe, AK DNR, and the Kenai Peninsula Borough, Soldotna Historical Society, develop a **Master Plan** for both City of Soldotna and DNR parcels to include: trails for neighborhood connectivity, tiered trails for recreation, cultural / interpretive trails, parking, trail heads and habitat protection in fishing areas (enforcement and infrastructure).

PROGRAMMING

- Educational programs and classes on history, culture, and natural resources.

Soldotna Little League & Soldotna Equestrian Association



DESCRIPTION, HISTORY & COMMUNITY FINDINGS

Soldotna Equestrian Association and Rodeo Grounds

The Soldotna Rodeo Grounds obtained a lease to use City of Soldotna property and constructed the rodeo grounds over the course of several years.

The Soldotna Equestrian Association, with the help of the Kenai Peninsula Borough, looked for a place to relocate in 2002, with no success. They have developed a master plan for their property and are working to secure funding for an indoor arena. They are requesting a new long term (30-year) lease to help with the grant process.

Traffic control and access need improvement. A turn lane and paved entrance would improve safety for entering the site, especially for horse trailers. Public Water and Sewer service to the site would save money for both the Soldotna Little League and the Soldotna Equestrian Association. The equestrian and rodeo grounds are in need of additional space and facilities to meet the growing needs of the three main user groups: Rodeo, 4-H, and others.

The association maintains a cooperative relationship with Soldotna Little League. Reducing pedestrian and vehicular conflicts is very important, especially during the busy summer months. Speed control along the driveways is always an issue and would be even more important if additional traffic were routed through the ball field area.

Soldotna Little League and Ball Fields

The 8 Ball fields and existing parking areas meet the needs of the Soldotna Little League, High School baseball, and other local user groups. A mutually agreeable parking agreement is needed to ensure parking for Field 3, adjacent to the Soldotna Historical Society.

There are concerns with the safety of pedestrians, especially children crossing Home Run Circle and west bound bicyclists on the Unity Trail. Dog droppings are a problem at the ball fields. Dust from the parking lot is an issue.

An indoor turf facility is needed for off-season training. Public Water and Sewer service to the site would save money for the Soldotna Little League .

RECOMMENDATIONS

FACILITIES

- Pave the driveway to the rodeo grounds.
- Install speed humps on Home Run Circle during summer season.
- Install public sewer and water to the end of Home Run Circle with stubs to the Rodeo Grounds and to Soldotna Little League.

OPERATIONS

- Assist and support identification of new location for rodeo / equestrian facility.
- Provide a new long-term lease agreement for Soldotna Equestrian Association if new location is not identified by 2015.

OTHER FACILITIES

MASTER PLAN

SOLDOTNA HISTORICAL SOCIETY



DESCRIPTION & COMMUNITY FINDINGS

The Historical Society sees many visitors during peak tourist season, most of whom walk or drive over from the Visitor Center. Local students also visit the historic cabin on school field trips.

Parking conflicts occur when ball games fill up the parking lot and there are no spaces left for visitors. The historical society needs six spaces reserved for their visitors at all times.

A trail loop around the cabins, through the woods and connecting to other trails nearby would be used by visitors.

RECOMMENDATIONS

FACILITIES

- Include a loop trail with connections to other areas of Centennial Park and the Kenai River Trail when planning future pedestrian connections in the Centennial Park area.

OPERATIONS

- Facilitate coordination between Soldotna Little League and the Soldotna Historical Society to resolve conflicts with parking.

DOG MUSHING TRAILHEAD



DESCRIPTION &

COMMUNITY FINDINGS

The Peninsula Sled Dog Racing Association and other skijourers and mushers use this parking lot trailhead for access to the mushing trails in the Refuge. Roughly ten full-time mushers and ten recreational mushers use the trailhead.

The City of Soldotna provides plowing, but doesn't get to it right away.

A trail map and general use information sign is needed at the trail head, as there are safety issues on these trails, such as direction of travel.

The PSDRA would also like a lockable storage building, a sign for the donation pole, a port-a-potty, a trail map, a trail head lease agreement, and official designation of the mushing trails to ensure dog mushing will always be the priority for these

RECOMMENDATIONS

OPERATIONS

- Continue to assist the Peninsula Sled Dog Racing Association with winter maintenance at the trail head.
- Consider providing funding assistance to establish a formal trail head at this location.
- Work with the PSDRA to develop a formal agreement for long term use of the property as a dog mushing trail head.
- Support an official designation of the trails as "mushing trails".

SCHOOL FACILITIES

MASTER PLAN

Soldotna Elementary School

Location: East Park Avenue
Classification: School Park
Components: 2 Playgrounds: lower and upper level age
Sledding Hill
Ice rink - not maintained
Open grass fields

Redoubt Elementary School

Location: West Redoubt Avenue
Classification: School Park
Components: 2 Playgrounds: lower / upper level age groups
Picnic pavilion
Sledding Hill



COMMUNITY FINDINGS & RECOMMENDATIONS

Parking and vehicular circulation are an issue at this school, particularly during student drop-off, pick-up times and for school events. Cars waiting to enter the parking lot back up along Park Avenue all the way to the Kenai Spur Highway.

The outdoor skating rink was maintained for public skating until a few years ago. Students and residents would enjoy a maintained ice rink at this location again.

Lawn areas are used for sports teams' practices.

Pedestrian access from the neighborhoods to the south needs improvement. Sidewalks in the immediate vicinity of the school should have sidewalks.

COMMUNITY FINDINGS & RECOMMENDATIONS

The playground and picnic pavilion are a popular destinations for the surrounding neighborhoods, year-round.

Open lawns are heavily used for school and other organizations' sports teams' practices and games.

Encourage partnerships that help utilize school facilities during non-school times.

SCHOOL FACILITIES

MASTER PLAN



Soldotna Middle School

<u>Location:</u>	West Redoubt Avenue
<u>Classification:</u>	School Park
<u>Components:</u>	Open grass fields Two gymnasiums
<u>Programming:</u>	Home of Soldotna Community Schools classes. Beginning in 2014 this school will house 9th grade

Soldotna High School

<u>Location:</u>	West Marydale Avenue
<u>Classification:</u>	School Park
<u>Components:</u>	Open grass fields Pool Gymnasium Auditorium Tennis Courts New Track / Turf Football Field

RECOMMENDATIONS

FACILITIES - Provide designated, paved and lighted pedestrian routes for students walking between Soldotna Middle School and Soldotna High School, as well as from adjacent neighborhoods.

Work with the Kenai Peninsula Borough to plan additional running and skiing trails on the property NW of the Marydale Trail and in the wooded parcel west of Redoubt Elementary.

Provide a community trail connection from the Marydale Trail to the existing trails in Memorial Park via KPB property west of Redoubt Elementary.

Consider constructing additional sports fields at this location, such as a baseball or softball field on the borough property west of Redoubt Elementary.

OPERATIONS - Coordinate with Kenai Peninsula Borough to identify additional borough funding sources to assist with the construction and maintenance of recreation facilities at the schools.

PROGRAMMING - Continue to work cooperatively with the school district to open school facilities to the community for after hours recreation and education; continue to expand the reach of the Community Schools program.

COMMUNITY FINDINGS

The trails in the woods west of Soldotna High School are used by the High School running and ski teams as well as the neighborhood. User groups would like to extend the trail system into the NW corner of the school property and into the Kenai Peninsula Borough property west of Redoubt Elementary.

The Middle School and High School running and skiing teams would like the convenience of nearby trails for training.

SCHOOL FACILITIES

MASTER PLAN



Skyview High School (Future Middle School)

Location: Sterling Highway, South of Soldotna

Classification: School Park

Components:

Open grass fields	Pool
Track / Football Field	Auditorium
Hockey boards	Gymnasium
Ski / running trails	Tennis Courts
Rock Climbing Wall	

Programming:

Beginning in 2014, this school will become Soldotna Middle

K-Beach Elementary School

Location: East Poppy Lane

Classification: School Park

Components:

Open grass fields
Gymnasium
Playground

COMMUNITY FINDINGS & RECOMMENDATIONS

The Soldotna community frequently uses the sledding hill, trails, and pool at this school. Large public events are held at this location, in partnership with the Tsalteshi Trails association and other organizations. Parking and circulation are excellent for large events.

Pedestrian access to the school needs improvement. A safe, comfortable trail into Soldotna should be included in development plans for Ski Hill Road and/or the Sterling Highway.

The school facility contains the only rock climbing wall in the area and local residents would more opportunities for public access to the climbing facility, as well as the pool. Open swim and lap swim times are in demand.

A separated trail is needed for students walking or biking into town.

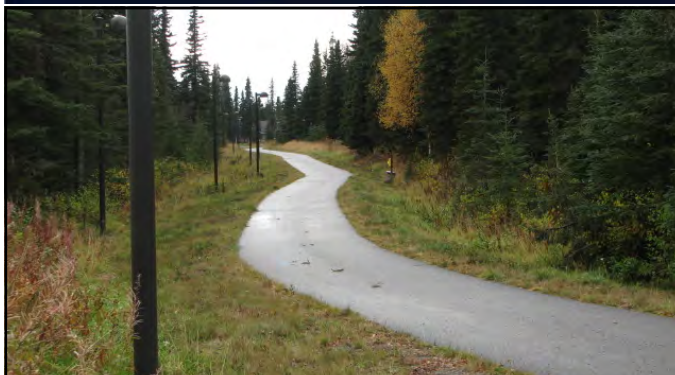
COMMUNITY FINDINGS & RECOMMENDATIONS

School children and local residents use the multi-use trail along East Poppy Lane, the school playground and the open lawn areas.

There are informal trails in the woods connecting the school to College Drive.

MULTI-USE PAVED TRAILS

MASTER PLAN



STATISTICS

Multi-Use Paved Trails

Existing Facility Locations

- **Marydale to Redoubt** - paved, with lights. Constructed 2002
- **Unity Trail** - Separated paved trail along the North side of Kalifornsky Beach Road from the Sterling Highway Bridge to Bridge Access Road. Constructed 2000
- **Parker Park** - Paved loop trail through Parker

COMMUNITY FINDINGS

Construction of the Unity Trail, more than 10 years ago, had unexpected results. Its widespread popularity has changed the way the community recreates and views recreation infrastructure in the greater Soldotna area.

Multiple annual community races are held on the Unity Trail, literally unifying the runners and leaders of Kenai and Soldotna for common goals.

Trail users span all segments of the population and are seen using trails year-round.

The community sees the benefits and changes that have come from having this type of amenity and is asking for more trails; more regional connections to Soldotna, such as on the Sterling Highway, in the town center, and to destinations in the outskirts or beyond Soldotna.

RECOMMENDATIONS

FACILITIES

- Identify a route and construct a paved multi-use trail from Soldotna Avenue to Devin Drive outside the highway ROW. Work with landowners to secure access easements as necessary to provide at least one east-west connection in this area.
- Work with DOT to provide a paved trail and **pedestrian crossing** from the Soldotna Sports Center to Tsalteshi Trail parking lot, across Kalifornsky Beach Road.
- Work with DOT to provide a paved trail along the Sterling Highway, connecting Skyview to K-Beach.
- Coordinate with DOT, KPC, ACC and KPBSD to construct a paved multi-use trail along **East Poppy Lane** from K-Beach Elementary to College Drive.
- Coordinate with KPC to secure funding for a paved multi-use trail along College **Drive** to K-Beach Road.
- Support Kenai National Wildlife Refuge in their goal to construct a separated multi-use trail parallel to **Ski Hill Road**.
- Design and construct a paved multi-use trail in the **Foothill Road** ROW from Kenai Avenue to East Marydale Avenue, via Karen Street Park, as per Master Plan.
- Construct a trail between Soldotna Creek Park and Lingonberry Lane via Pioneer Street ROW and the **Mullen Drive** easement.
- Coordinate with AD DOT to include a paved separated trail on at least one side of the **Sterling Highway** between Devin Drive and Boundary Avenue.

RECOMMENDATIONS (continued)

FACILITIES

- Design and construct a separated trail along the **Mackey Lake Road** from the Sterling Highway to National Avenue.
- Provide a multi-use paved trail from **West Redoubt to College Drive** via pedestrian bridge across the Kenai River.
- Construct a trail in the **Little Avenue** ROW between S Henrich and O'Neill Streets.
- Construct a trail in the **Riverview Avenue** ROW between S Fireweed and Stacy Drive.
- Construct a trail in the **S Fireweed** ROW between West Redoubt and Riverview and between Riverview and Kobuk.
- Re-design and construct a separated (or much wider) paved trail on the south side of the **Sterling Highway**, between the bridge and Birch Place.
- Re-design and construct a separated (or much wider) paved trail on the east side of the **Kenai Spur Highway**, between Park Avenue and Devin Drive.
- Work with AK DOT to re-design and construct a separated (or much wider) paved trail along **Funny River Road**.
- Construct a separated trail in the S Sterling ROW between Riverview and Redoubt.
- Encourage land owner to provide a pedestrian access easement from Daisy Lane (off Riverview) to Rose Garland Road and from Trollius Avenue to Rose Garland.
- Encourage land owners to provide pedestrian access easements for connections between Ridgewood Drive and Knight Drive and from N Brentwood to Knight Drive.
- Explore opportunities for a trail connection between Mullen Court and East Redoubt at Fred Meyer entrance.

OPERATIONS

- Increase maintenance funding to improve snow removal efforts on all multi-use paved trails.

PROGRAMMING

- Continue to support community events and races on our local trail facilities.



NATURAL SURFACE TRAILS

MASTER PLAN



STATISTICS

Multi-Use Paved Trails

Existing Facility Locations

- **Memorial Park** - a gravel loop trail overlooking the Kenai River and connecting to the cemetery and existing neighborhoods.
- **Centennial Park** - Several campground trails looping around inside Centennial Park.
- **Soldotna Creek Park** - Gravel trails connect the parking lot to fishing boardwalks and picnic areas.
- **Slikok Creek Park** - this State Park has gravel trails connecting the parking lot to the Kenai River via stairs, bridges and boardwalks. The Boyd-Shafer Trail connects the Slikok Creek Park parking lot to Kenai River Campus.
- **Swiftwater Park** -
- **Rotary Park** -
- **Informal / Historic Trails** - Many informal trails existing throughout Soldotna, created over time by casual use, but never maintained or improved for official use. Such paths existing behind Fred Meyer, along utility corridors, in undeveloped Rights-of-Way, in wooded areas of parks and open space, and on private property.

COMMUNITY FINDINGS

The Soldotna area needs more casual natural surface multi-use trails. Residents enjoy walking, biking, snow-shoeing and skiing in a natural setting.

Community input showed that residents support the development of single-track trail systems in our existing parks and in undeveloped open spaces in town, such as the woods near Soldotna High School, the West Redoubt open space, Centennial Park, Swiftwater Park, and Memorial Park.

Natural surface trails can serve many uses; as casual neighborhood connections, as peaceful walking paths and as recreation facilities, year round.

For now, trails can accommodate a wide range of uses and there is no need to designate or manage uses until conflicts begin to surface.

RECOMMENDATIONS

West Redoubt Park - Design and construct a multi-purpose natural surface trail to connect neighborhood streets via the Redoubt Park open space. Connections should include West Riverview Avenue, Royal Crest Avenue, and West Redoubt Avenue. Design a tiered system of loop trails off the main community connector trail, constructing in phases, for multi-purpose use, year-round. Design an interpretive trail loop or trail spur at the archeological site, in conjunction with KPC and local native tribal organizations. Provide a natural surface trail connecting a small parking area at West Redoubt to fish access facility on the Kenai River.

Soldotna Creek Corridor - Acquire easements to connect East Redoubt to the Sterling Highway, via private and DNR Forestry parcels.

East Redoubt to Sterling Highway via Birch Ridge Golf Course - Work with property owners to identify public access easements for future trails between Creekside Avenue / North Point Street and Boundary Street, Long Drive, and On Par Lane via private and State owned parcels.

Birch Ridge Golf Course - Work with the owners of Birch Ridge Golf Course to plat pedestrian access easements for trail connections between Creekside Avenue and Boundary Street, and from Creekside to Long Drive, and from Creekside to On Par Lane via State Division of Forestry property and other private property owners.

Kenai National Wildlife Refuge - Support their efforts to construct a trail on the northern border of the refuge property to provide a connection between the Sterling Highway and Funny River Road (east of the airport).

Arc Lake - Add trails, with connections to adjacent trail facilities in the refuge and at Tsalteshi.

PROGRAMMING - Continue to support community events and races on our local trail facilities.

RIVER ACCESS (Boardwalks and Stairs)

MASTER PLAN



STATISTICS

Soldotna Creek Park	Centennial Park
Swiftwater Park	Soldotna Visitor Center
Rotary Park	West Redoubt Open Space

COMMUNITY FINDINGS

During peak fishing season, people will trample the natural river edges if they need to get more elbow room for fishing. Boardwalks and stairs provide anglers a safe and environmentally responsible way to access fishing areas. More stairs and boardwalks prevent habitat destruction from occurring during these peak times.

When fishing is hot, people are fishing, regardless of whether or not there are facilities. Enforcement is needed to keep people from leaving the fishing facilities and walking on the river bank. The boardwalks and stairs provided by the City of Soldotna are very durable and functional.

Managing for a healthy river bank is very important to maintaining a healthy Kenai River. Where fishing is popular, it is common to have trampling of nearby vegetation where people have walked or rested on the ground. Protective walking surfaces are expensive, but critical to the protection of river habitat. Annual evaluations are needed to help identify problem areas and provide improvement strategies.

RECOMMENDATIONS

FACILITIES

- Continue to provide and maintain the most durable, effective fish access facilities.
- CENTENNIAL PARK: Add (1-3) sets of fish stairs down stream from existing facilities as per multi-agency planning effort. Construct barriers as needed to prevent pedestrians from trampling the habitat along the river.
- SWIFTWATER PARK: Restore the river bank and add fish access facilities as decided during multi-agency planning effort.
- ROTARY PARK: Add a barrier as needed to prevent pedestrians from trampling river banks at Rotary Park.
- WEST REDOUBT: Construct boardwalk and stairs for fishing access in the West Redoubt Open Space prior to upgrading trail facilities in that area.

OPERATIONS

- Enforce fishing rules and regulations to prevent habitat damage.
- Monitor fishing areas to encourage and educate anglers about safe and responsible fishing.

PROGRAMMING

- Continue to support local efforts such as Stream Watch to offer education about the Kenai River.

BICYCLE LANES and ROUTES

MASTER PLAN



STATISTICS

Length: 3.2 Miles

Width: 5 feet, plus gutter

History & Description:

Bicycle lanes were first included in street designs in Soldotna in the early 1990's. The lanes are on both sides of the streets and are striped with a white line and bicycle symbols.

COMMUNITY FINDINGS

Bicycle lanes are used by commuters, kids, and pedestrians on foot. They add an extra separation from automobile traffic on the collector streets which is valuable many months of the year. When sidewalks are too icy or not clear of snow, walkers use the bike lanes.

Kobuk Avenue is used by runners and bikers as a connection through Soldotna when using the Unity Trail. The bicycle lane offers a safe quiet alternative to the Kenai Spur and Sterling Highway routes.

RECOMMENDATIONS

FACILITIES

- Design and install universal signage for bicycle or pedestrian routes.
- Provide striped bicycle lanes to the end of West Redoubt.
- Provide striped bicycle lanes on Marydale, east of the Kenai Spur Highway.
- Provide bicycle lanes along Riverview Drive, between Binkley and West Redoubt Open Space.

OPERATIONS

- Maintain striping in the bicycle lanes

PROGRAMMING

- Designate Kobuk Avenue as the Unity Trail Route through Soldotna, connecting to the Unity Trail via Big Eddy Road.
- Stripe and/or Sign to designate bicycle routes:

Lingonberry Lane

Swiftwater Park Road

Griffin Avenue

Jay Street

East Redoubt

Riverview Drive

Foothill Road

Riverside Drive

Wilson Lane

Marydale: connect to Karen Street Park

- Utilize designated routes for local races and events.

SIDEWALKS

MASTER PLAN



FACILITIES

The Kenai Spur and Sterling Highways have an 18" wide colored concrete separation area between the curb and the 8 foot wide sidewalk.

Collector streets and residential streets have 4-5 foot wide sidewalks at back of curb.



COMMUNITY FINDINGS

Community input shows that many residents rely on sidewalks to get to school, work and shopping as well as for exercise. Winter and spring weather conditions make sidewalks very difficult to maintain to a level that is safe and comfortable to pedestrians.

Separated sidewalks feel more comfortable and offer distance to protect pedestrians from automobile splashing. However, separated sidewalks are most costly to construct and maintain.

Better sidewalk conditions would encourage more walking in the community, year-round.

RECOMMENDATIONS

FACILITIES

- When redesigned, provide wider or separated sidewalk facilities along Redoubt , Marydale , Kobuk, Binkley, and Park.

- Add sidewalks along:

Shady Lane

Corral Street (Binkley to Schools)

Beluga Avenue

West Redoubt (to the end)

Aspen Drive

Riverview Avenue

Knight Drive

Devon Drive

W. Little Avenue

OPERATIONS

- Work with street maintenance department to improve the type of sidewalk maintenance and the priority ranking for clearing sidewalks in the highest use areas, such as near schools, shopping and other popular destinations.
- Adjust funding and maintenance methods and equipment as needed to elevated the priority for improved conditions on sidewalks.

PROGRAMMING

- Coordinate with the school district and other user groups to identify critical places and times for priority snow removal on sidewalks.

Chapter 6 - Implementation

5 YEAR Strategic Action Plan

The City of Soldotna's parks, recreation, trails and facility system can preserve community values and enhance residents' quality of life. This chapter identifies strategic actions the City should take immediately and in the next two to five years to begin the successful implementation of this **City of Soldotna Recreation and Trails Master Plan**. These actions will ensure that the overall system can meet the stated goals of residents well into the future.

The following **Strategic Action Plan** outlines a systematic and realistic approach to implementation of the most achievable, urgent and desired tasks of the Plan. The plan also offers a timeline for implementing and identifies the type of action required as well as the responsible party. These implementation tables address actions to be taken over the next five years, at which point, the City can evaluate their accomplishments and their priorities and produce a new 5-year implementation schedule.

IMMEDIATE IMPLEMENTATION (during F.Y. 2014)

- Projects already approved and funded for FY2014
- Action items that are urgent and don't require funding or administrative approval
- Coordination efforts that are required prior to funding or implementing other upcoming tasks
- Operational changes that don't require additional funding, only changes in methodology.

SHORT TERM IMPLEMENTATION (during F.Y. 2015-2016)

- Projects or action items that may be in the conversation at this time but have not been fully approved or funded.
- Tasks that require staff time that are important, but not urgent.
- Tasks or projects that are very important, but require time and money to set in motion

MID-TERM IMPLEMENTATION (during F.Y. 2017-2018)

- These tasks are primarily capital improvements that are important to the community, but took time and money to set in motion.
- Planning projects for future capital improvements
- Tasks or steps that are a part of very large, long-term projects that require many steps or phases.

Immediate Implementation FY 2014

Type of Action	#	Task	Ref Page #	Responsible Org / Agency / Dept
Funding	1.A	Provide resources for winter trail maintenance in parks	30	City of Soldotna - Parks & Recreation
Funding	1.B	Increase staffing for campground maintenance	30	City of Soldotna - Parks & Recreation
Funding	1.C	Provide resources for more outdoor ice trails and social ice rinks	30	City of Soldotna - Parks & Recreation
Admin/Coordination	2.A	AK DOT & PF - Schedule / arrange for semi-annual meetings	30	City of Soldotna - Administration
Admin/Coordination	2.B	Work with Soldotna Police, Stream Watch, and DNR to enforce fishing / habitat rules and regulations along the Kenai River.	30	City of Soldotna - Administration / Police Department / State AK DNR / KWF
Admin/Coordination	2.C	Continue and improve partnership with PSDRA	30	City of Soldotna - Administration
Admin/Coordination	2.D	Community Garden - Support the site selection & development. Operate a rental program.	30	Soldotna Parks & Recreation, KPB Planning, Soldotna Rotary
Admin/Coordination	2.E	Support efforts to relocate Rodeo / Equestrian Facility	30	City of Soldotna - Administration, KPB
Admin/Coordination	2.F	Coordinate to plan a Winter Carnival	30	Sold. Parks & Rec, Chamber of Commerce
Funding	2.G	Continue support of Tsalteshi Trails Association	30	City of Soldotna - Administration
Admin/Coordination	2.H	Sterling Highway Multi-Purpose Trail	30	State of Alaska
Admin/Coordination	3.A	Develop recreation information distribution method	30	City of Soldotna - P&R with other groups
Admin/Coordination	3.B	Facility Rentals - Expand rental opportunities at parks	30	City of Soldotna - Parks & Recreation
Admin/Coordination	3.C	Continue partnership with The Tribe for Skate Park Events	31	City of Soldotna - Admin / Parks & Rec
Admin/Coordination	3.D	Continue support for large events, races, & celebrations	31	City of Soldotna, Chamber of Commerce, Kenai Watershed Forum, Rotary, etc.
Admin/Coordination	3.E	Community Schools - Continue expansion of opportunities	31	City of Soldotna - Parks & Recreation
Admin/Coordination	3.F	Community Garden - Operate rental program	31	City of Soldotna - Parks & Recreation
Admin/Coordination	4.A	Trail Easements - through Birch Ridge Golf Course	31	City of Soldotna - Admin / Parks & Rec
Admin/Coordination	4.B	Trail Easements - Between Fred Meyer and Soldotna Avenue.	31	City of Soldotna - Admin / Parks & Rec
Funding	4.C	New playground location in Farnsworth neighborhood.	31	City of Soldotna - Parks & Recreation
Admin/Coordination	4.D	Investigate parcels adjacent to Karen Street Park	31	City of Soldotna - Admin
Funding	4.E	Support parcel purchase west of Soldotna Creek Park	31	City of Soldotna - Admin
Admin/Coordination	5.A	KPB - request funding support for education programs	31	City of Soldotna - Admin / Parks & Rec
Admin / Coord	10.B	Upgrade habitat assessment process and continue TreeWorks updates	32	City of Soldotna - Parks & Rec

Immediate Implementation FY 2014

Type of Action	#	Task	Ref Page #	Responsible Organization / Agency / Department
Funding	12.A	Aspen Park - Allocate funds for tree thinning at playground	33	City of Soldotna - Admin / Parks & Rec
Admin/Coordination	15.A	Karen Street Park - Assist with BMX track completion	33	City of Soldotna - Parks & Recreation
Implementation	16.A	Parker Park - Install gazebo	34	City of Soldotna - Park & Recreation
Implementation	19.A	Soldotna Creek Park - Phase II Construction	34	City of Soldotna - Public Works
Planning / Permits	21.D	Soldotna Sports Center Master Plan (renovation/expansion)	34	City of Soldotna - Admin / Parks & Rec
Funding	21.E	Soldotna Sports Center - Identify funding for construction	35	City of Soldotna - Admin
Implementation	22.A	Restroom at Sunrise Park	35	City of Soldotna - Admin / Park & Rec
Implementation	23.A	Swiftwater Campground - expansion of camping facilities	35	City of Soldotna Park & Recreation
Admin/Coordination	24.A	West Redoubt Open Space - Establish task force	35	City - Admin / P & R, KPC, Kenaitze, DNR
Admin/Coordination	27.A	K-Beach Pedestrian Crossing - Discuss with DOT	37	City of Soldotna - Admin / Parks & Rec
Admin/Coordination	27.D	Sterling Highway Pedestrian Facility - Discuss with DOT	37	City of Soldotna - Admin
Implementation	29.A	Boardwalk link from Visitor Center to Centennial Park	38	City of Soldotna Park & Recreation
Admin/Coordination	29.H	Funny River Road pedestrian amenities - Discuss with DOT	38	City of Soldotna - Admin

Short Term Implementation FY 2015-2016

Type of Action	#	Task	Ref Page #	Responsible Organization / Agency / Department
Funding	1.D	Improve winter maintenance on sidewalks	30	Soldotna Maintenance Department
Admin/Coordination	1.E	Partnerships for improved maintenance on all facilities	30	KPDS, DOT, DNR, KPHA, etc.
Admin/Coordination	1.F	Parks & Recreation Maintenance Standards	30	Soldotna - Parks & Recreation
Admin/Coordination	2.H	Sterling Highway Trail - Team with others to advocate	30	
Admin/Coordination	2.J	Pursue KPB land lease (recreation) west of Redoubt Elem.	30	KPB, KPBSD, City of Soldotna Planning
Admin/Coordination	3.G	Partnerships for more recreation programming	31	
Admin/Coordination	3.G	Community Schools - Partner with KPBSD for teen programs	31	City of Soldotna – Parks & Rec., KPBSD
Admin/Coordination	3.H	Learn to Skate - expand the program to outdoor ice/events	31	
Admin/Coordination	4.B	Trail Easements - Devin Drive to Soldotna Avenue	31	City of Soldotna - Admin.
Admin/Coordination	4.B	Trail Easements - Pioneer Street ROW to Lingonberry Lane	31	City of Soldotna - Admin.
Admin/Coordination	4.E	Site Selection Criteria - land purchases along Kenai River	31	City of Soldotna - Admin.
Admin/Coordination	4.D	Property Acquisition - Pursue “brownfield” parcels near Karen Street Park for reclamation as parkland	31	City of Soldotna - Admin. / Parks & Rec.
Admin/Coordination	5.C	Pursue KPB Recreation Service Area for Sports Center operations and maintenance	31	City of Soldotna - Admin.
Admin/Coordination	5.D	Investigate taxation and grant funding sources for capital improvements / operations / maintenance of facilities	31	City of Soldotna - Admin.
Admin/Coordination	6.B	Staff - Handyman contract	32	City of Soldotna – Parks & Recreation
Admin/Coordination	6.A	Staff increases to cover winter maintenance increases	32	City of Soldotna – Parks & Recreation
Admin/Coordination	6.D	Staff - Program Manager position	32	City of Soldotna – Parks & Recreation
Admin/Coordination	7.A	Bicycle routes - policies for signage and route designation	32	
Admin/Coordination	8.A	Develop design standards for City parks	32	City of Soldotna – Parks & Recreation
Admin/Coordination	8.B	Establish design review process for all park projects	32	City of Soldotna – Parks & Recreation
Admin/Coordination	10.A	Arbor Day Celebration and ‘TreeCity USA’	32	City of Soldotna, Chamber of Commerce, KPBSD, Kenai Watershed Forum

Short Term Implementation FY 2015-2016

Type of Action	#	Task	Ref Page #	Responsible Organization / Agency / Department
Implementation	11.A	ARC Lake Park - provide restroom and other amenities	33	City of Soldotna – Parks & Recreation
Funding / Implement	12.B	Aspen Park - Allocate funding for dog park	33	City of Soldotna - Parks & Rec
Funding	13.A	Centennial Park Sewer and Water, restrooms and showers	33	City of Soldotna - Public Works / P & R
Funding / Implement	13.B	Centennial Park - design and construct trail to Sports Center	33	City of Soldotna – Parks & Recreation
Funding	13.C	Centennial Park - Master Plan	33	City of Soldotna – Parks & Recreation
Funding / Implement	15.A	Karen Street Park - Restroom	33	City of Soldotna – Parks & Recreation
Funding	15.B	Karen Street Park - Allocate funding for MP & Phase I Const.	33	City of Soldotna – Parks & Recreation
Funding / Implement	18.A 18.B	Rotary Park - Pave parking, install pay station, enforcement	34	City of Soldotna – Parks & Recreation
Funding	19.B	Soldotna Creek Park - funding for signage	34	City of Soldotna – Parks & Recreation
Implementation	21.A 21.C	Soldotna Sports Center - Pedestrian safety at ball fields	34	City of Soldotna Park & Recreation
Funding	21.B	Soldotna Sports Center - Pave driveway to Rodeo Grounds	34	City of Soldotna - Parks & Recreation
Funding / Implement	21.F	Soldotna Sports Center - Design Dvpmt/ Construction	35	City of Soldotna – Public Works / P & R
Admin / Coordination	21.B	Plan for river bank restoration / access improvements	35	City of Soldotna – Parks & Recreation, KPB, KWF
Funding	24.B	West Redoubt Open Space - Master Plan & funding	35	City of Soldotna – Parks & Recreation
Admin/Coordination	25.A	West Redoubt PEDESTRIAN BRIDGE - Advocacy Team	36	City of Soldotna, KPC, KPB
Funding / Implement	25.B	West Redoubt PEDESTRIAN BRIDGE - Preliminary Bridge Site Assessment	36	City of Soldotna, KPC, KPB
Admin/Coordination	27.A.ii	K-Beach Crossing - DOT coordination, schedule, funding	37	City of Soldotna Admin / DOT
Funding / Implement	28.A/B	Sidewalks - funding for West Redoubt, Knight Drive & Corral Street	37	City of Soldotna - Public Works
Funding / Implement	28.D	Sidewalks - funding for Shady Lane	37	City of Soldotna - Public Works
Funding / Implement	29.B.i	Trails - Funding for South Fireweed Trail– segment 1	38	City of Soldotna - Public Works
Funding / Implement	29.E.i	Riverview Drive Trail - funding and construction	38	City of Soldotna - Public Works
Admin/Coordination	29.H.iii	Binkley Circle to Birch Place Trail Easement	38	City of Soldotna - Admin. / Parks & Rec.
Admin/Coordination	29.I.ii	Funny River Alternative Trail - partner with Kenai NWR to build trail between Ski Hill Road and Funny River Road	38	City of Soldotna - Admin. / Parks & Rec. / Kenai NWR

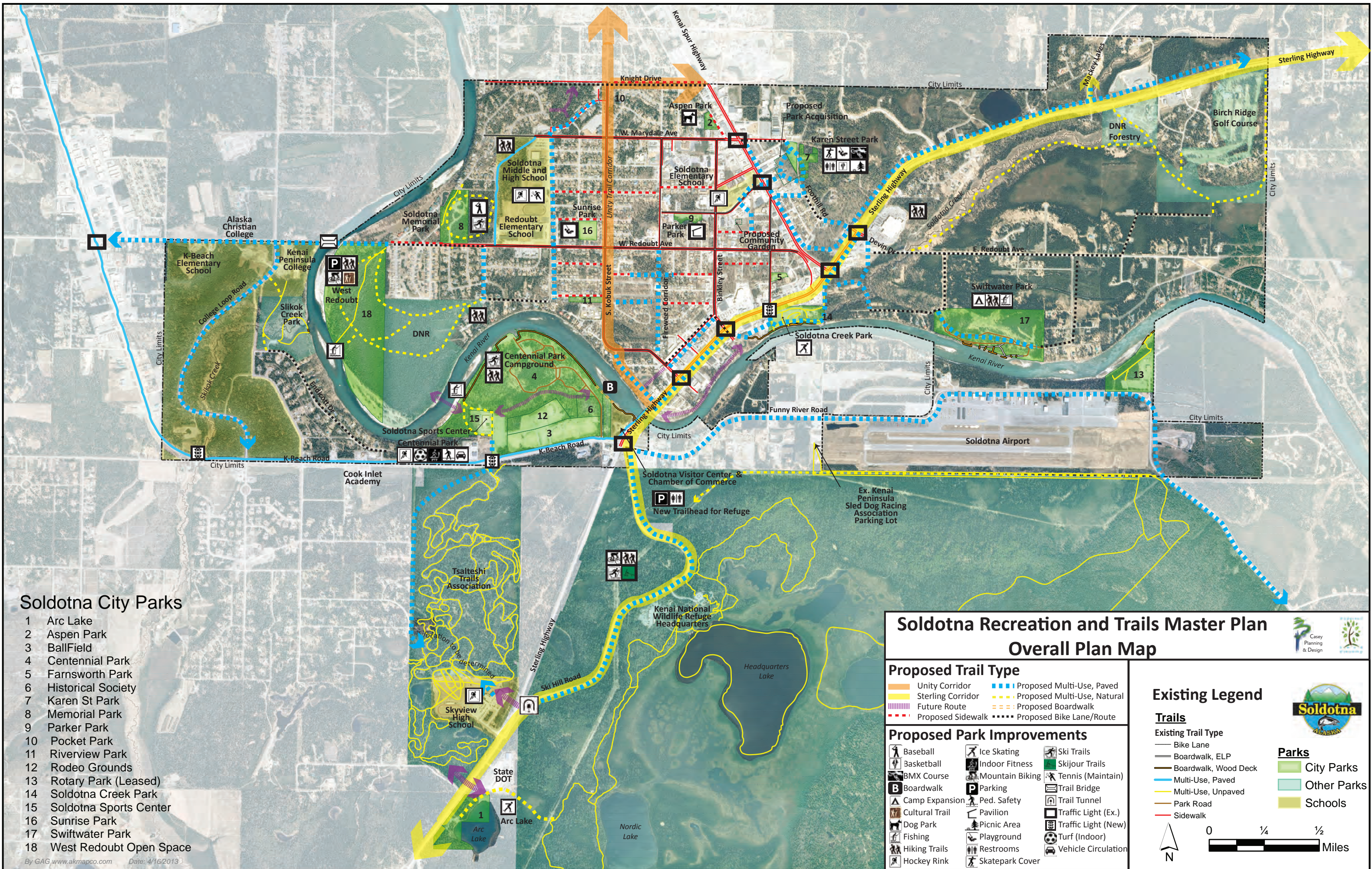
Mid Term Implementation FY 2017-2018

Type of Action	#	Task	Ref Page #	Responsible Organization / Agency / Department
Admin/Coordination & Funding	4.G	New Neighborhood Park - Identify and acquire property in neighborhoods not meeting Soldotna's LOS standards	31	City of Soldotna Parks & Rec
Admin/Coordination	6.C	Staff - Events and Volunteer Coordinator	32	City of Soldotna Parks & Rec
Implementation	6.E	Staff - Offer Youth Ambassadors Program for teens	32	City of Soldotna Parks & Rec
Funding	6.F	Staff - Include a Trails Specialist	32	City of Soldotna Parks & Rec
Admin/Coordination	7.B	Designate through-town route for the Unity Trail - signage	32	City of Soldotna Parks & Rec
Admin/Coordination	7.C	Designate route between Soldotna Creek Park & Swiftwater Park - provide signage	32	City of Soldotna Parks & Recreation
Funding	11.B	ARC Lake Park - Allocate funding for additional trails	33	City of Soldotna - Admin / P & R
Funding	13.D	Centennial Park - Add fish stairs as needed	33	City of Soldotna Parks & Rec
Implementation	15.E	Karen Street Park - Sell parcels as directed by Master Plan	33	City of Soldotna - Admin
Funding	15.C	Karen Street Park - Develop a Master Plan	33	City of Soldotna - Parks & Rec
Funding	15.D	Karen Street Park - Phase I: Expand and Cover Skate Park	33	City of Soldotna - Parks & Rec
Funding	21.G	Soldotna Sports Center - Funding for overall Master Plan	35	City of Soldotna - Admin
Implementation	23.B	Swiftwater Campground - Bank restoration and fish access	35	City of Soldotna Parks & Rec
Funding	24.C	West Redoubt Open Space - Funding for Phase I Construct.	35	City of Soldotna - Admin
Funding	25.B	West Redoubt PEDESTRIAN BRIDGE - Complete a Preliminary Bridge Site Assessment.	36	City of Soldotna, KPC, KPB, Bridge Advocacy Team
Admin/Coordination	25.C	West Redoubt PEDESTRIAN BRIDGE - Coordinated bridge design and construction funding effort.	36	City of Soldotna, KPC, KPB, Bridge Advocacy Team
Funding	26.A	NW Neighborhood Park - Acquire land	36	City of Soldotna - Admin / P & R
Admin/Coordination	27.A.iii	K-Beach Crossing - Continue Advocacy	37	City of Soldotna, Tsalteshi Trails, KPB, KPBSD, etc
Funding /Implement	27.C.iii	Trails - Fund and build trails in easements to Devin Drive	37	City of Soldotna - Public Works
Funding /Implement	28.G.i	Sidewalks - Fund & Construct on Riverview Avenue	37	City of Soldotna - Public Works
Funding /Implement	29.B.ii	Trails - Fund trails in Little Avenue ROW	38	City of Soldotna - Public Works
Funding /Implement	29.B.iv	Trails - Fund Trails in the Riverview ROW	38	City of Soldotna - Public Works
Funding	29.C.i	Trails - Design & construct Wilson Avenue facility	38	City of Soldotna - Public Works
Funding	29.D.i	Foothill ROW - Design & Construct trail to Karen Street Park	38	City of Soldotna - Public Works / Parks & Rec
Funding	29.E.i	Allocate funding for Riverview multi-use trail	38	City of Soldotna
Admin / Coordination	29.F.ii	School Access - Easements and trails from E-W Streets	39	City of Soldotna, KPBSD
Funding	29.H.ii	River Park Trail - Construct Trail to Pioneer and Lingonberry	39	City of Soldotna

Maps

Map 1: City of Soldotna Recreation and Trails System - Map shows existing park locations and trails types, including on other lands that are used as parks under various land use agreements.

Map 2: City of Soldotna Core Area Plan - Enlargement map for the business core area.



Soldotna City Parks

- 1 Arc Lake
- 2 Aspen Park
- 3 BallField
- 4 Centennial Park
- 5 Farnsworth Park
- 6 Historical Society
- 7 Karen St Park
- 8 Memorial Park
- 9 Parker Park
- 10 Pocket Park
- 11 Riverview Park
- 12 Rodeo Grounds
- 13 Rotary Park (Leased)
- 14 Soldotna Creek Park
- 15 Soldotna Sports Center
- 16 Sunrise Park
- 17 Swiftwater Park
- 18 West Redoubt Open Space

**Soldotna Recreation and Trails Master Plan
Overall Plan Map**

Proposed Trail Type

- Unity Corridor
- Sterling Corridor
- Future Route
- Proposed Sidewalk
- Proposed Multi-Use, Paved
- Proposed Multi-Use, Natural
- Proposed Boardwalk
- Proposed Bike Lane/Route

Proposed Park Improvements

Baseball	Ice Skating	Ski Trails
Basketball	Indoor Fitness	Skijour Trails
BMX Course	Mountain Biking	Tennis (Maintain)
Boardwalk	Parking	Trail Bridge
Camp Expansion	Ped. Safety	Trail Tunnel
Cultural Trail	Pavilion	Traffic Light (Ex.)
Dog Park	Picnic Area	Traffic Light (New)
Fishing	Playground	Turf (Indoor)
Hiking Trails	Restrooms	Vehicle Circulation
Hockey Rink	Skatepark Cover	

Existing Legend

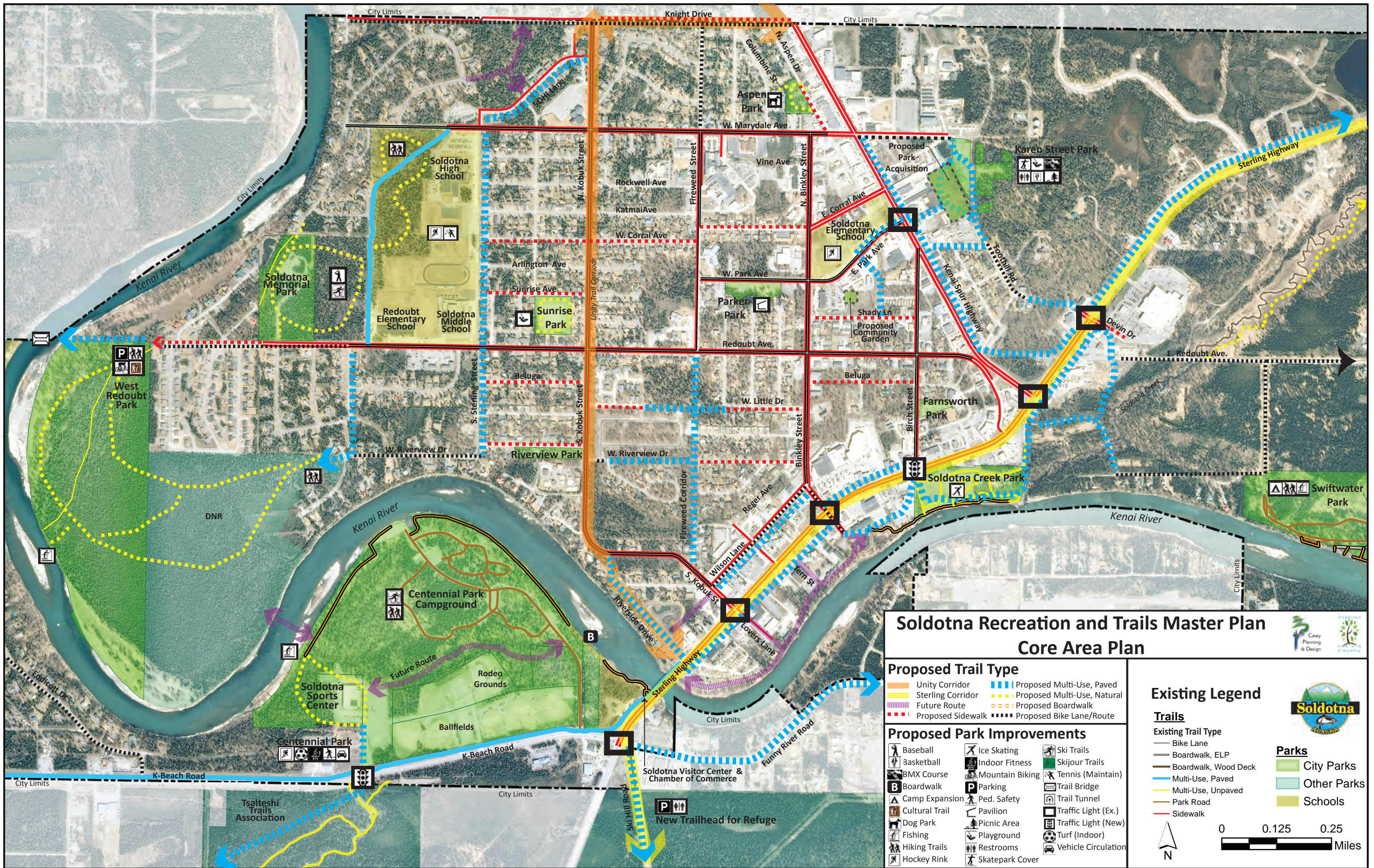
Trails

- Existing Trail Type
- Bike Lane
- Boardwalk, ELP
- Boardwalk, Wood Deck
- Multi-Use, Paved
- Multi-Use, Unpaved
- Park Road
- Sidewalk

Parks

- City Parks
- Other Parks
- Schools

Scale: 0 1/4 1/2 Miles



Appendix

Appendix A: Recreation Inventory Table

Appendix B: Stakeholder Roadshow Notes

Appendix C: Recreation Survey Summary

Appendix D: Steering Committee Notes

Appendix E: GIS data model