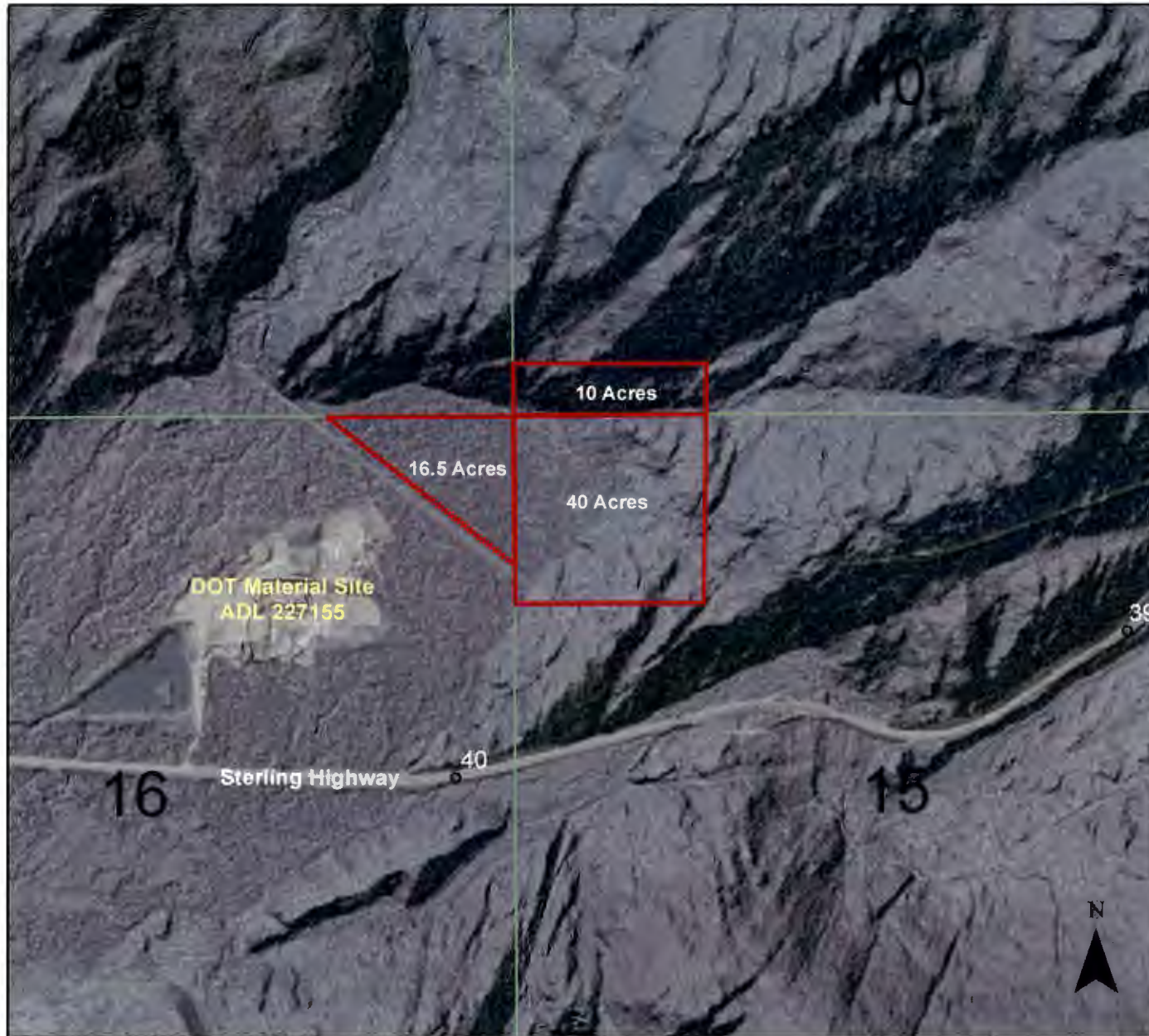




Classification of Land to Accomodate Future Location of the Cooper Landing Gun Club



KS 5/19/17

0 1,000 2,000 4,000 Feet

Proposed Classification

-  Recreational
-  Section Lines

Mile 40 Sterling Highway (Daves Creek)
Sections 10,15,16, T5N, R2W
Approved Municipal Entitlement Land
(KPB Management Authority)
66.5 Acres

Vicinity Map

