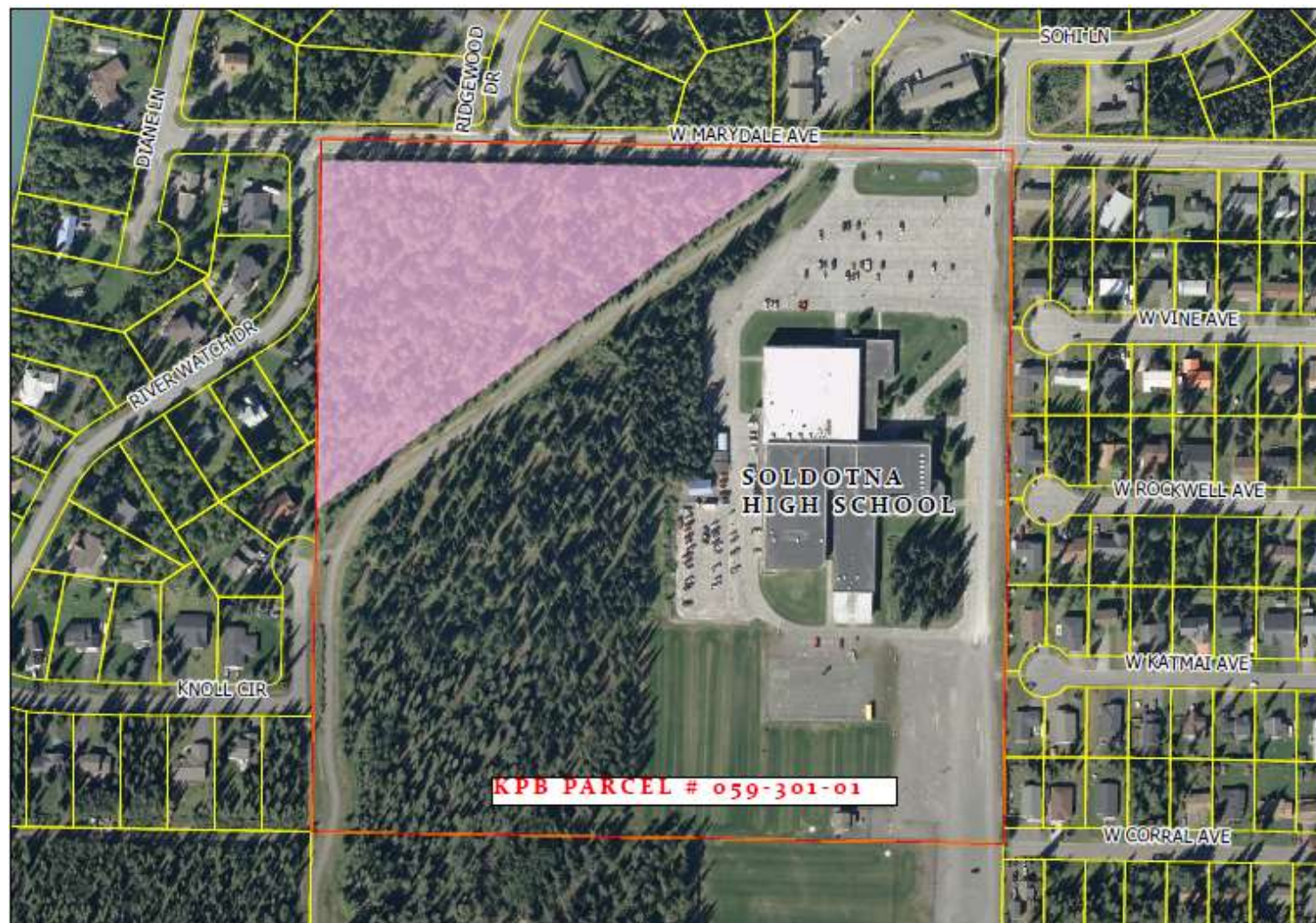


姉妹都市庭園散策路



Shimai Toshi Garden Trails



- PARCELS
- SUBJECT KPBS PARCEL
- CTMA AREA

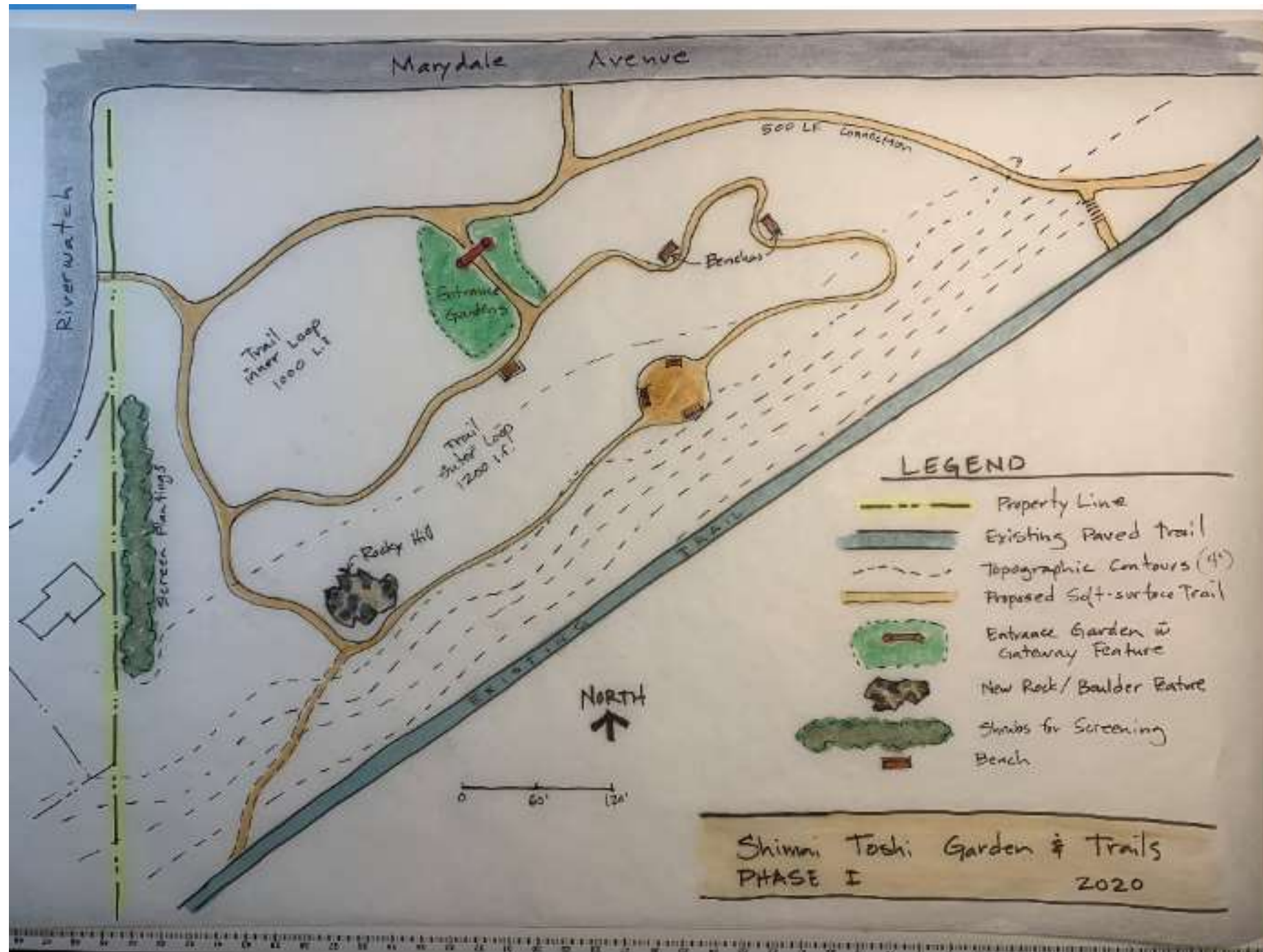
EXHIBIT A

0 75 150 300 450 600 Feet











## Phase 1 major components

---

- Entrance
- Peace Crane
- Rotunda
- Trails
- Mountain



Entrance Gate  
Doors: 8 feet high x 6 feet wide

Base 15 feet  
Base to Peak 12 feet



# Peace Crane

- Community members gathered to assist in assembling the sculpture at Soldotna Public Library and Kenai Community Library.
- Christina Demetro, sculptor, also went into Soldotna Elementary School, Sterling Elementary School, Mountain View Elementary, Skyview Middle School, K-Beach Elementary, and Soldotna High School to hold sculpting, Haiku, and music workshops surrounding the Peace Crane and Shimai Toshi Garden Trails.
- Focus is to have as much community involvement in the creation of this sculpture to give a sense of ownership to all.

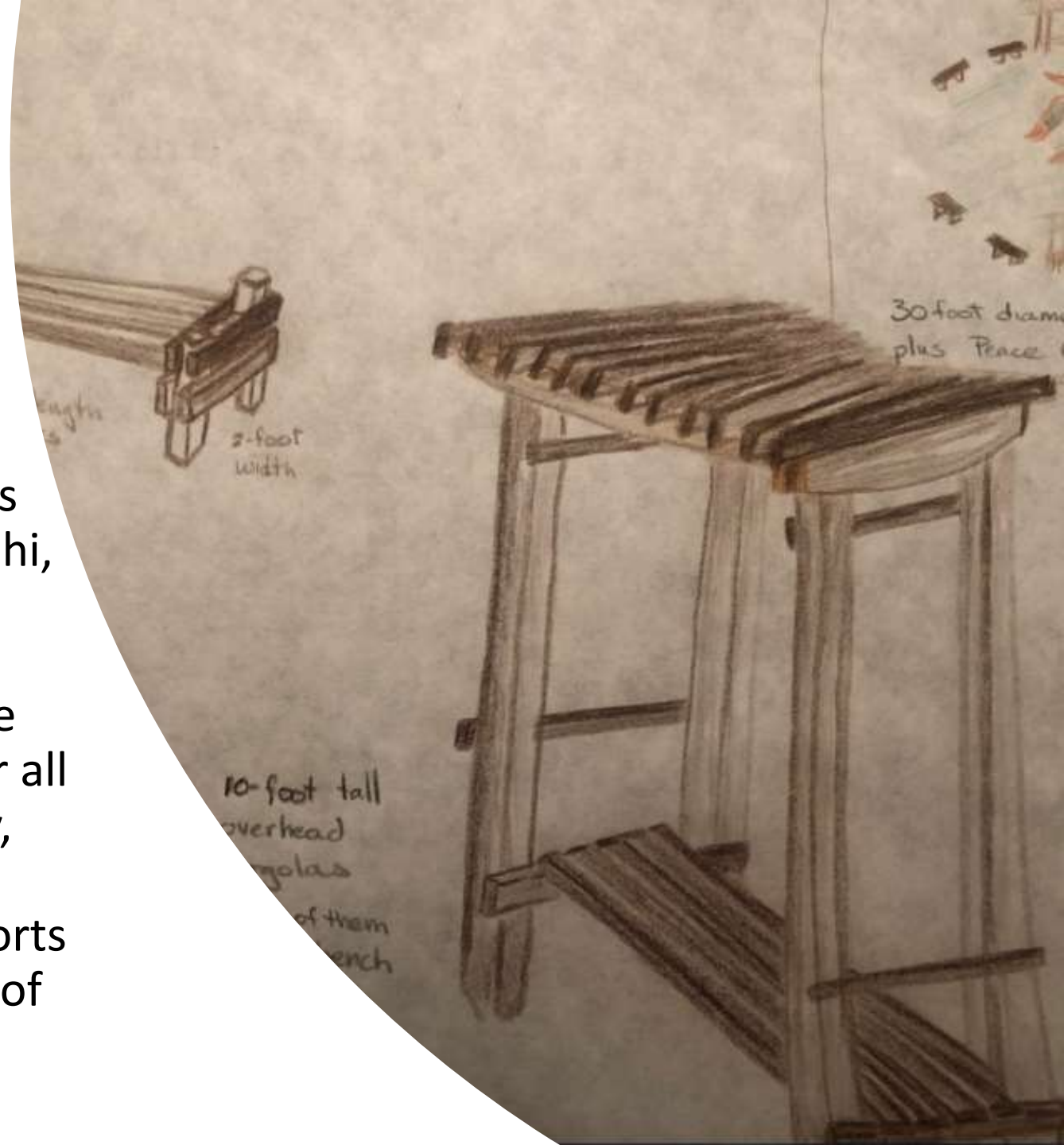




# Rotunda as a pensive space

---

- Shimai Toshi “Sister City” Garden Trails are to honor the KPB’s sister city Akita-shi, Akita, Japan. This garden is a symbol of peace hope, and survivorship in remembrance of WWII. In that we hope this garden becomes a healing space for all veterans, and a place to foster harmony, peace, well-being, and education for all who visit. 100% of your donation supports future developments and maintenance of this space.





# Mountain Waterfall – Dry until Phase 2



# Phase 3 Main Building





# Trees that inspired this space to be added during Phase 3

- Heiwa Rotary Hiroshima Survivor Trees
  - Original Gingko
  - Persimmons
  - Hackberries

