



SPH, Inc. Quarterly Report

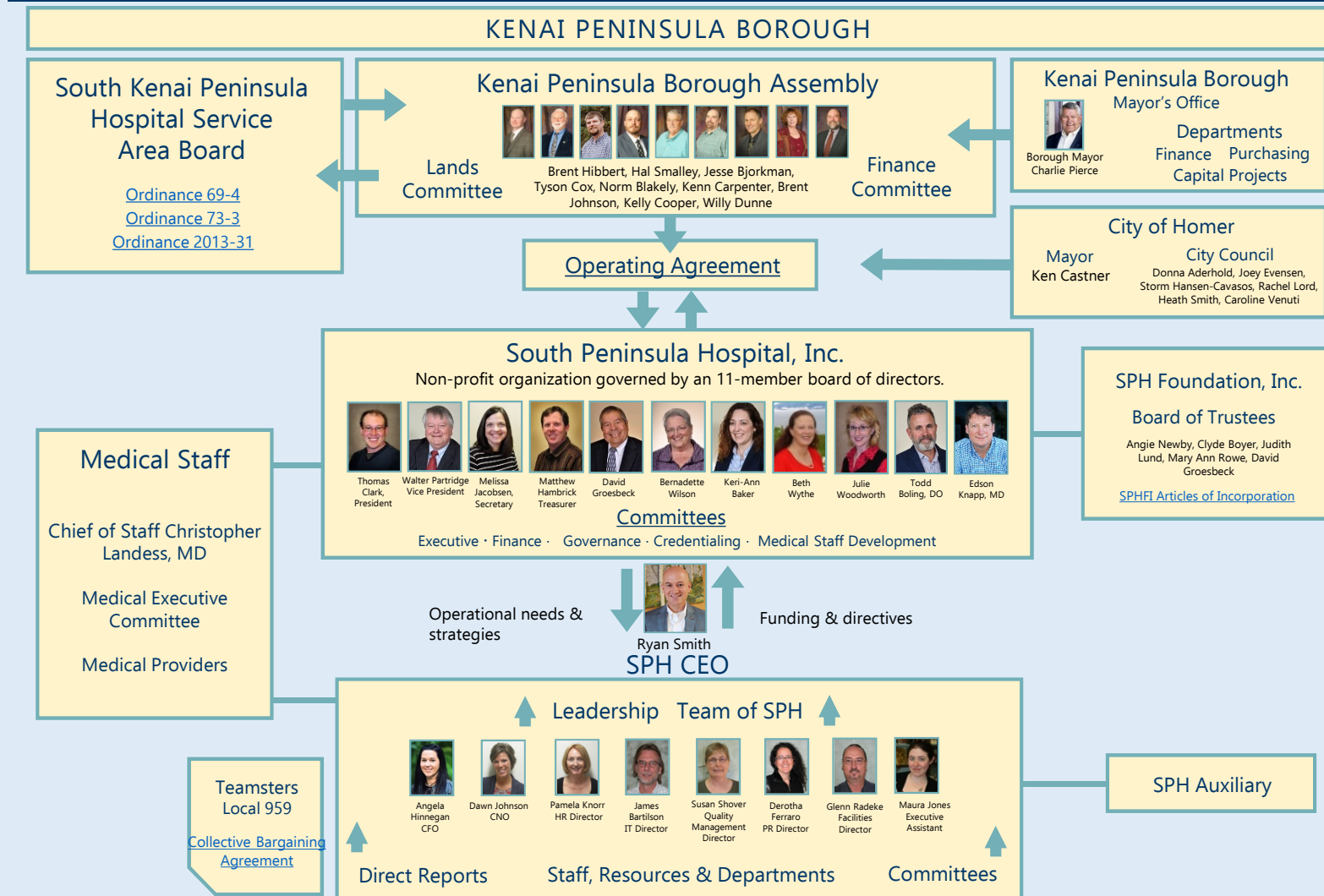
Prepared for

The Kenai Peninsula Borough
Assembly and Administration

June 16, 2020

South Peninsula Hospital is the healthcare provider of choice, with a dynamic and dedicated team committed to service excellence.

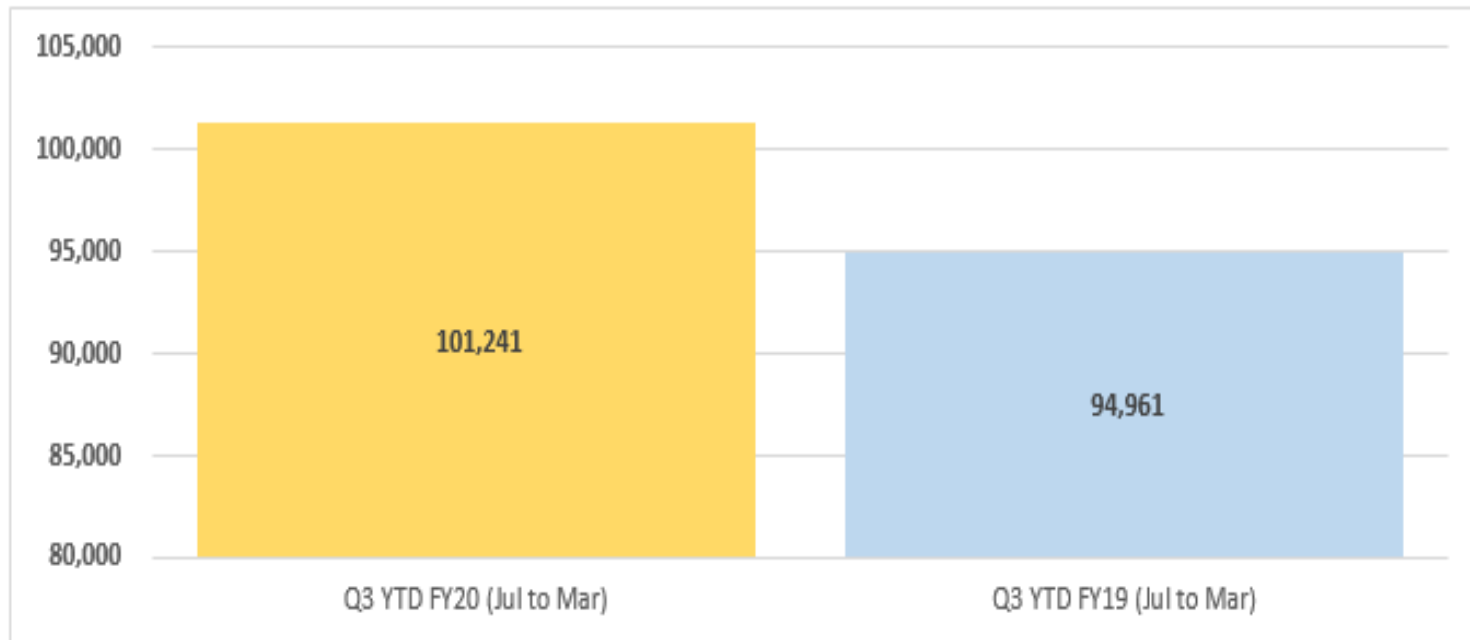
SOUTH PENINSULA HOSPITAL Ownership and Governance



Third Quarter YTD FY 2020
(Jan-Mar 2020)
Financial Results

Gross Patient Revenue-Q3YTD FY20

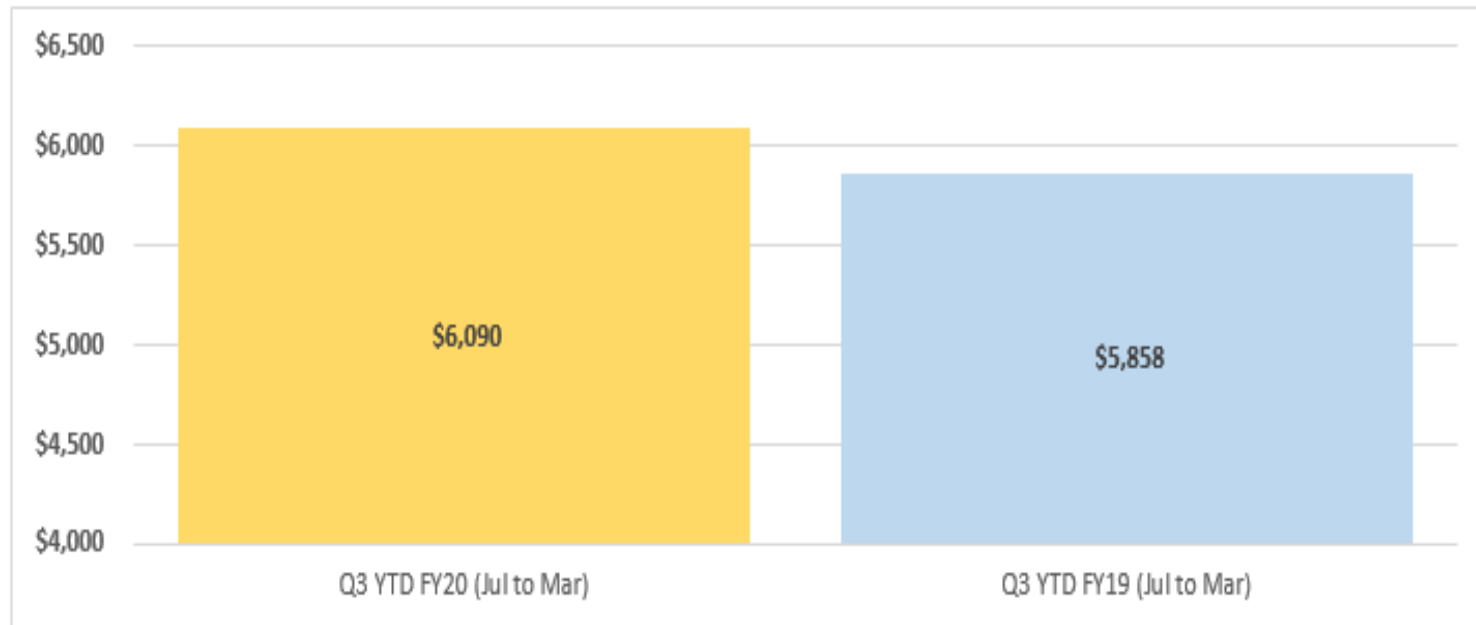
(in thousands)



South Peninsula Hospital is the healthcare provider of choice, with a dynamic and dedicated team committed to service excellence.

Net Income-Q3YTD FY20

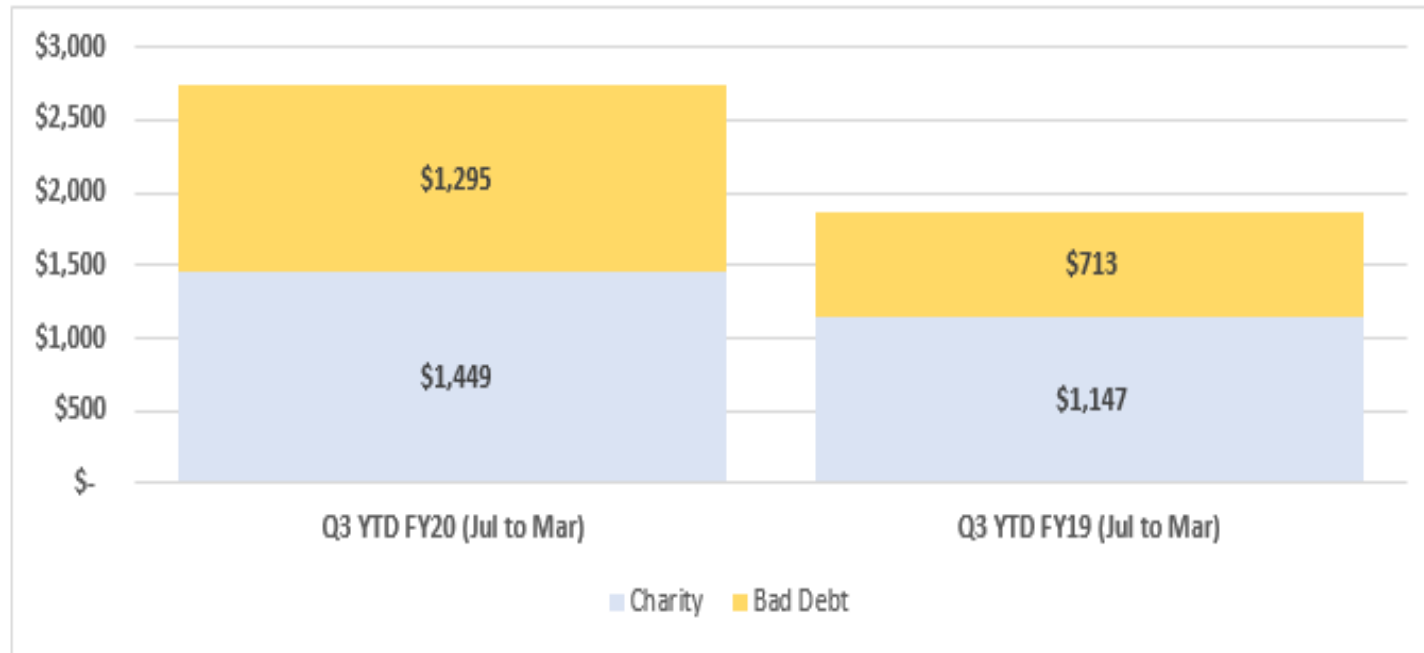
(in thousands)



South Peninsula Hospital is the healthcare provider of choice, with a dynamic and dedicated team committed to service excellence.

Charity Care & Bad Debt-Q3YTD FY20

(in thousands)



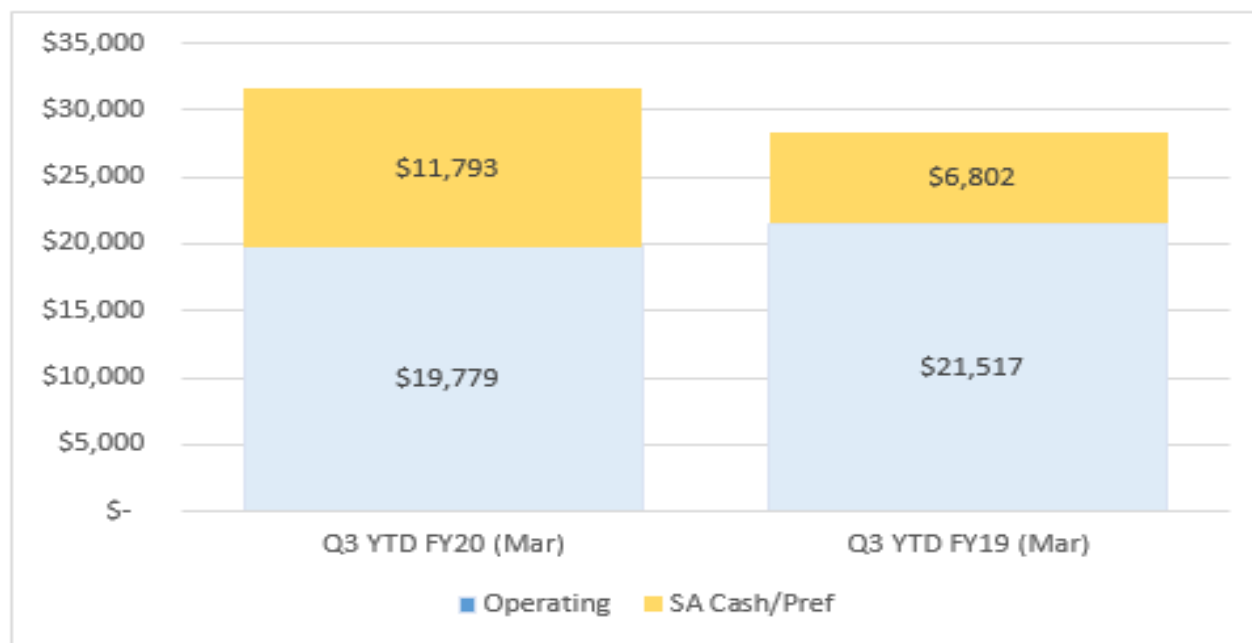
Community Benefit

South Peninsula Hospital is the healthcare provider of choice, with a dynamic and dedicated team committed to service excellence.

Cash & Cash Equivalents-Q3YTD FY20

Operating Cash, SA Cash, PREF

(in thousands)



- Q3 FY20 \$0.0 M in cash transfers to KPB – (due to COVID-19 special request).
- Q2 FY20 \$0.0 M cash transfer – (less than 90 days cash on hand).
- Q1 FY20 \$0.0 M cash transfer – (less than 90 days cash on hand).

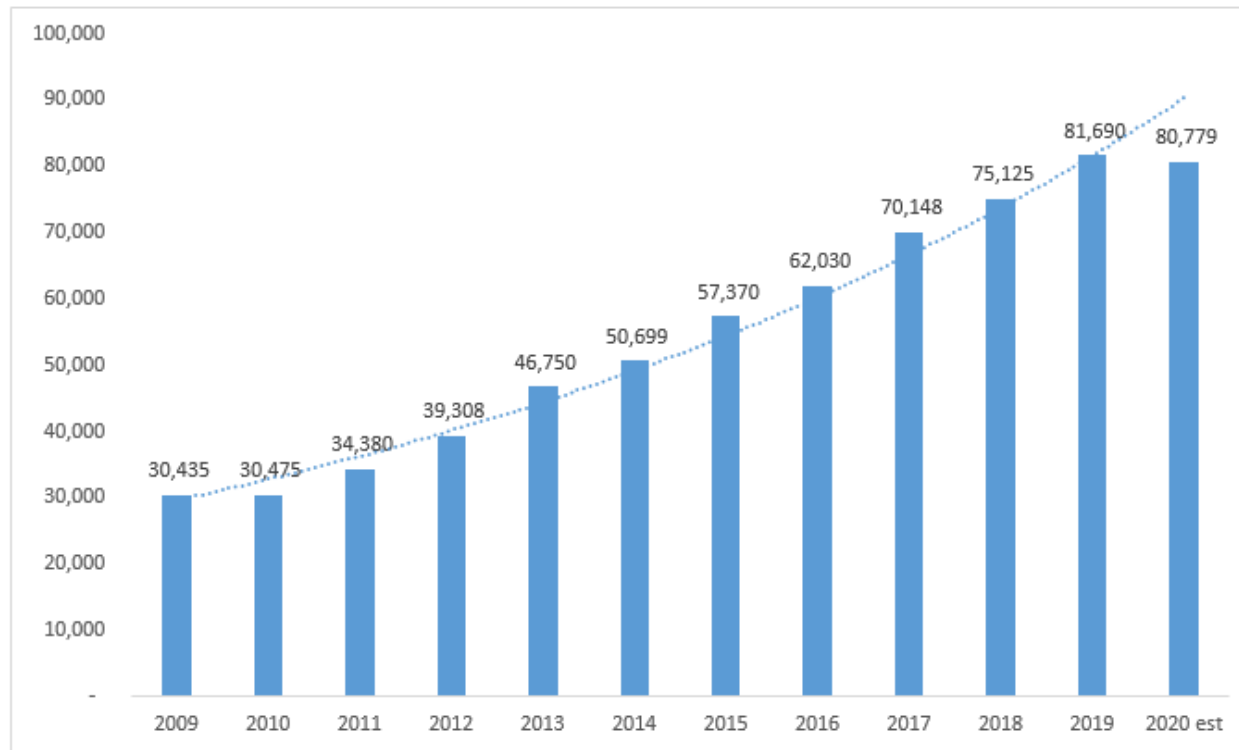


South Peninsula Hospital is the healthcare provider of choice, with a dynamic and dedicated team committed to service excellence.

SPH 10 Year Financial Results

Total Operating Revenue

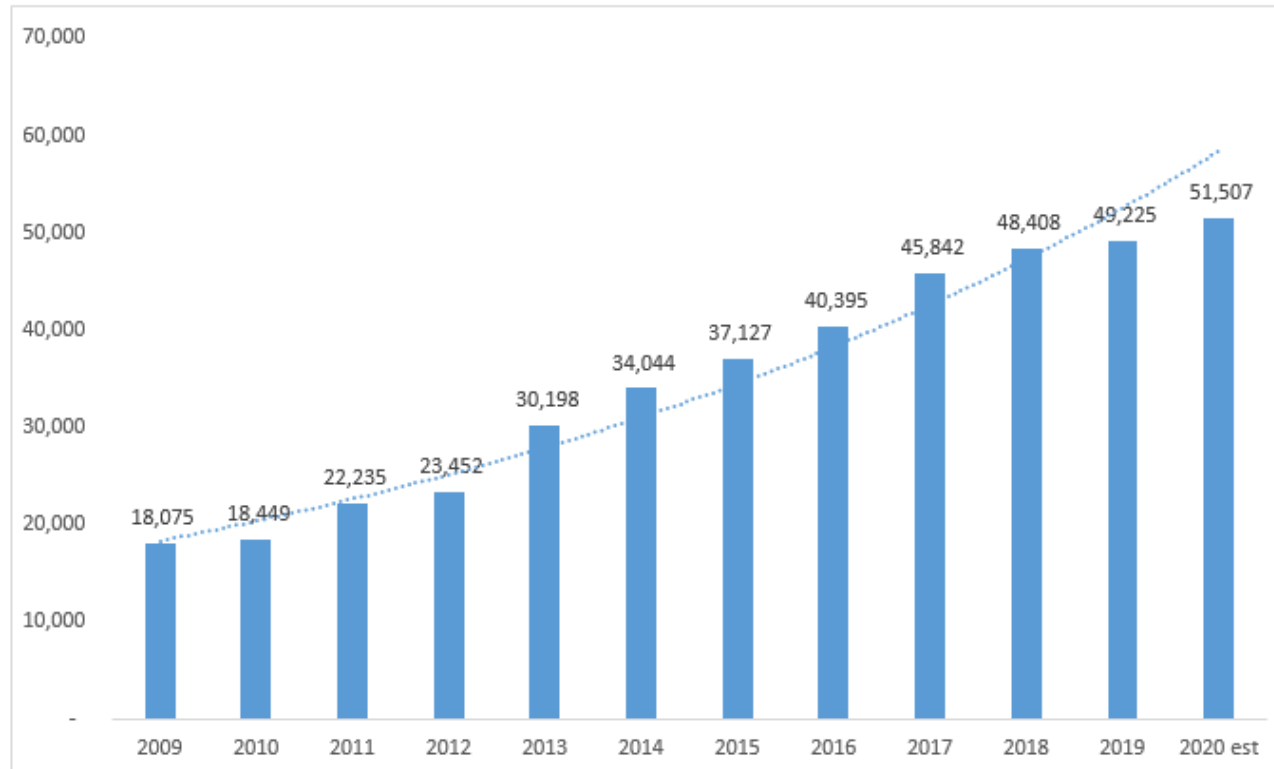
(in thousands)



South Peninsula Hospital is the healthcare provider of choice, with a dynamic and dedicated team committed to service excellence.

Salaries, Wages, & Benefits

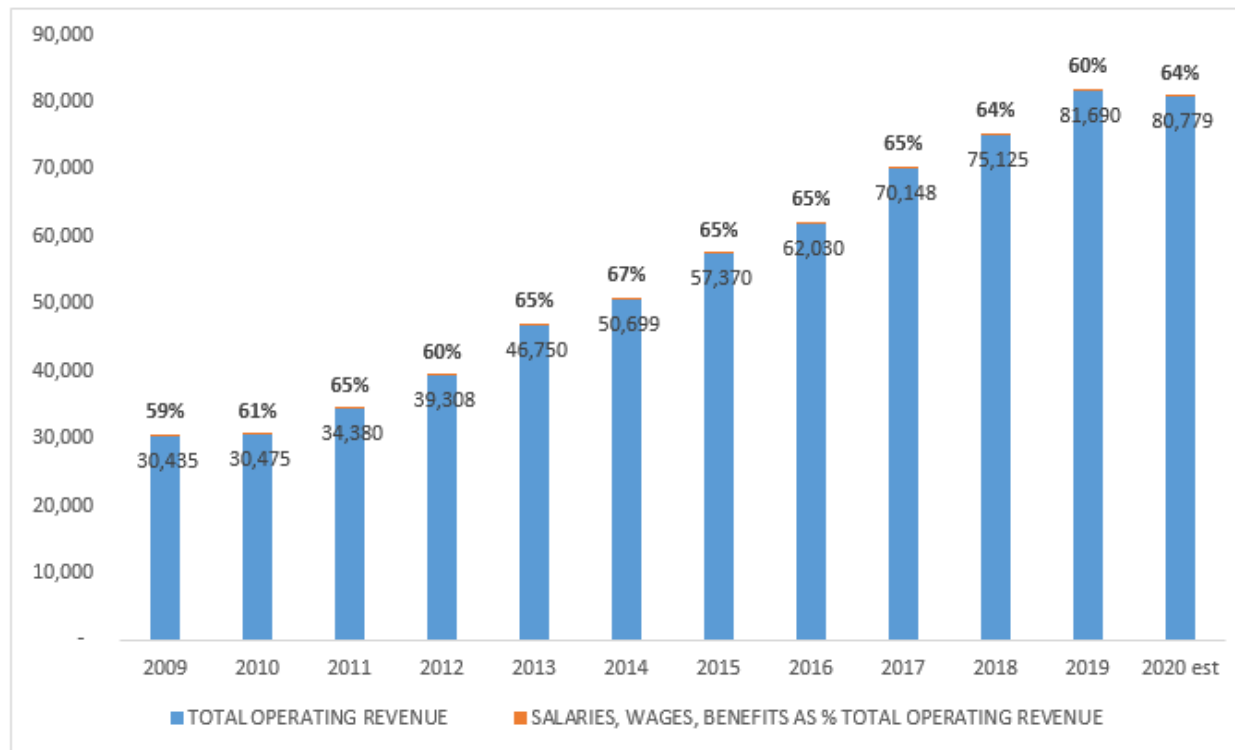
(in thousands)



South Peninsula Hospital is the healthcare provider of choice, with a dynamic and dedicated team committed to service excellence.

Salaries, Wages, Benefits as % of Operating Revenue

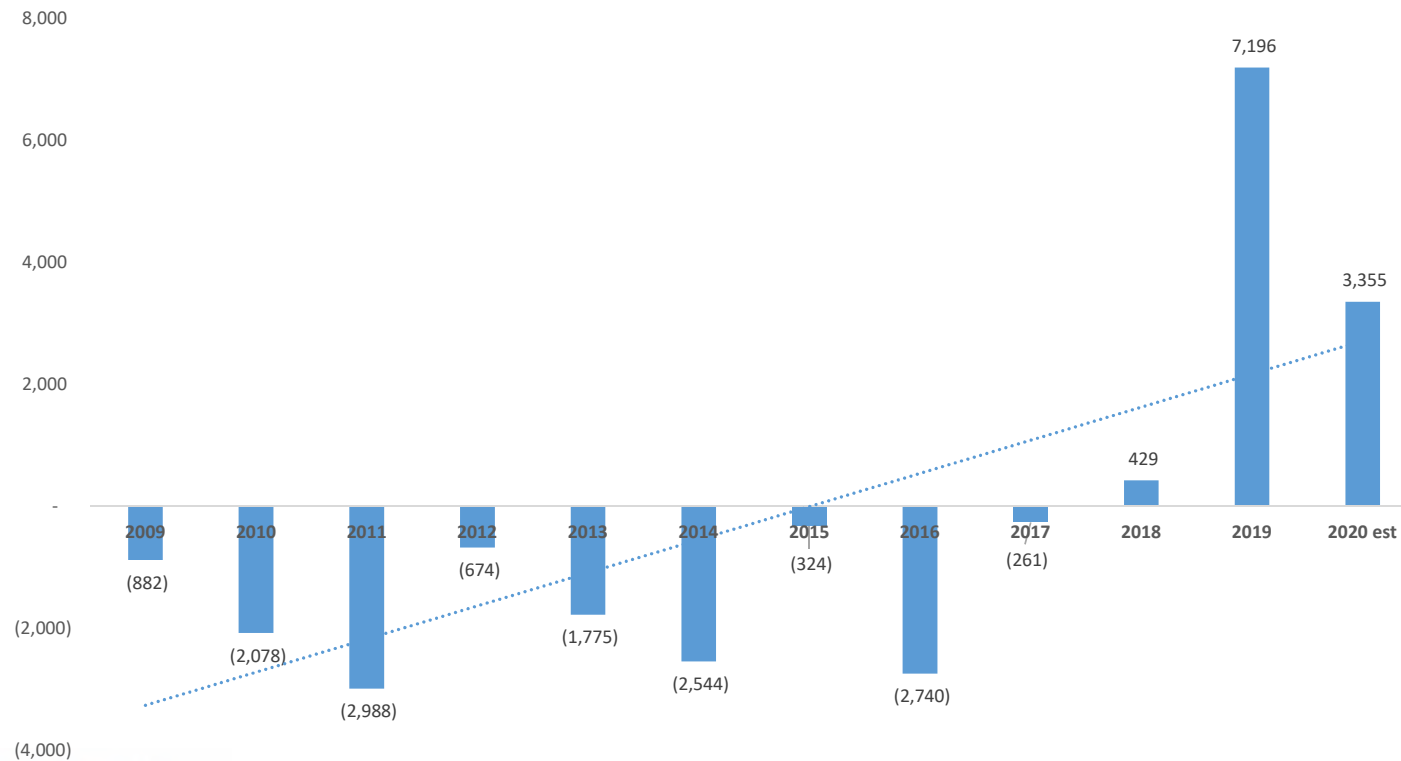
(in thousands)



South Peninsula Hospital is the healthcare provider of choice, with a dynamic and dedicated team committed to service excellence.

Gain/Loss from Operations

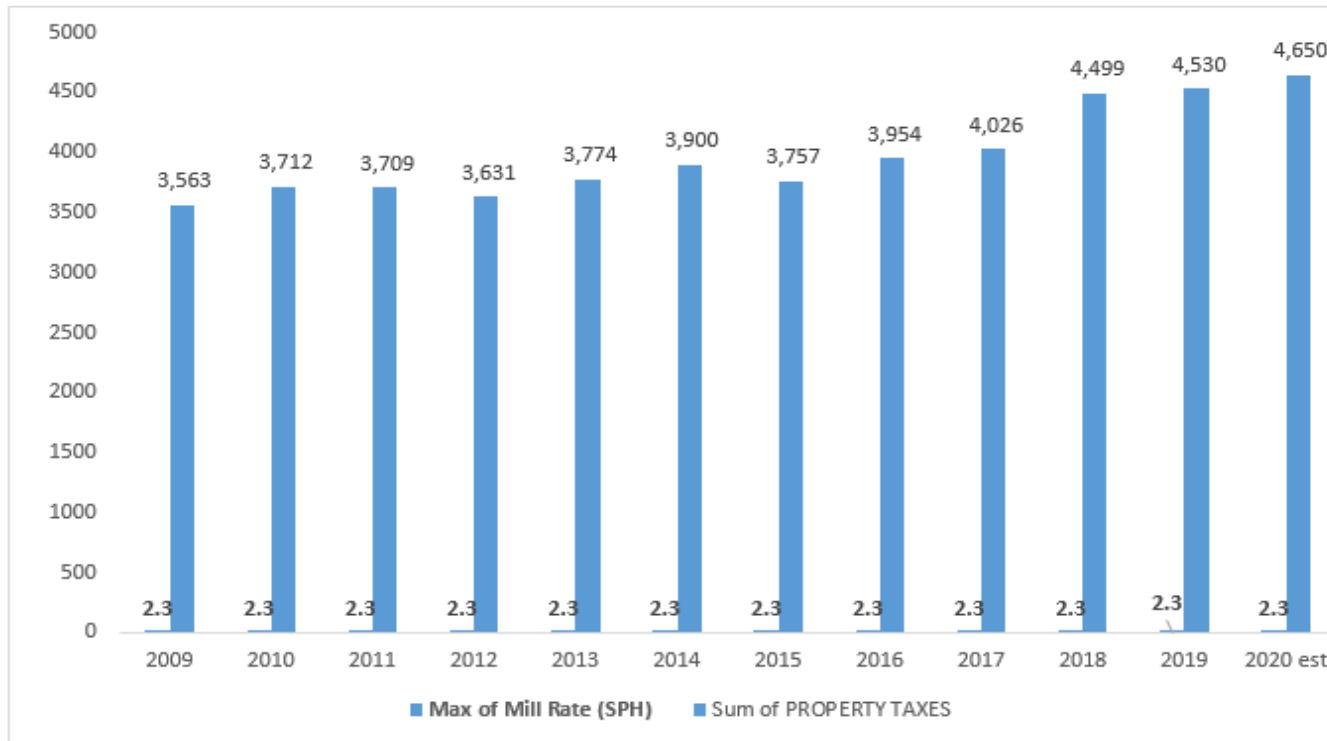
(in thousands)



South Peninsula Hospital is the healthcare provider of choice, with a dynamic and dedicated team committed to service excellence.

Property Taxes

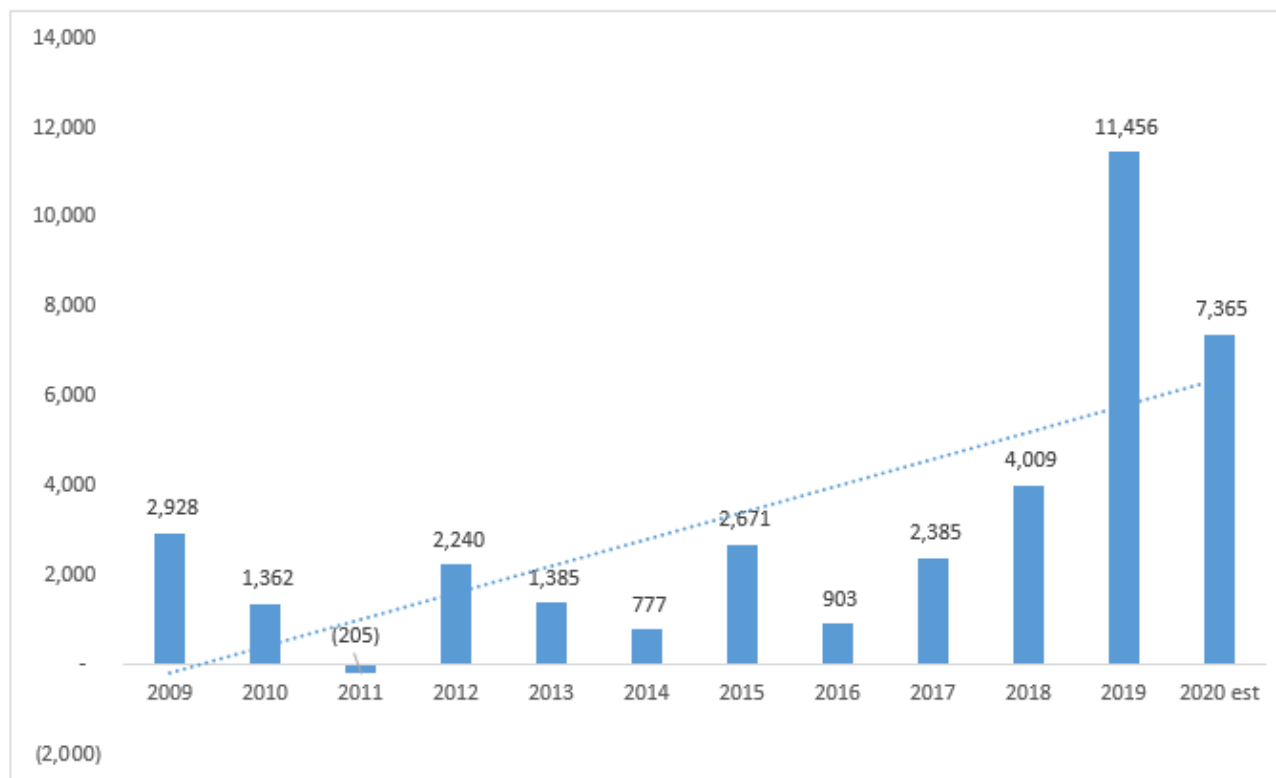
(in thousands)



South Peninsula Hospital is the healthcare provider of choice, with a dynamic and dedicated team committed to service excellence.

Change in Net Position

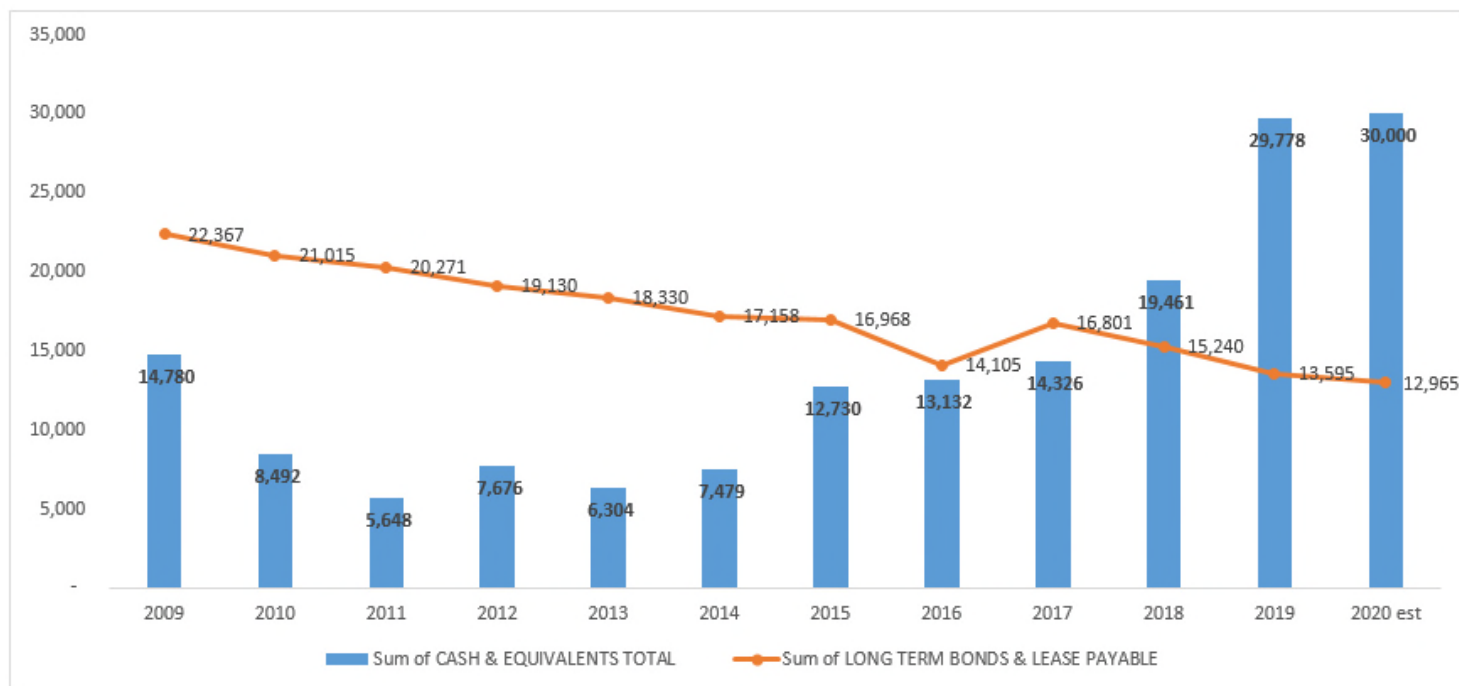
(in thousands)



South Peninsula Hospital is the healthcare provider of choice, with a dynamic and dedicated team committed to service excellence.

Cash & Equivalents versus Long-Term Bonds & Lease Payable

(in thousands)



South Peninsula Hospital is the healthcare provider of choice, with a dynamic and dedicated team committed to service excellence.



Welcome to SPH!

Matthew Swain, DO
Family Practitioner, HMC

& Stephanie Swain!
Acute Care Service Director



South
Peninsula
Hospital



Thank you JBER
for the flyover
salute to
healthcare workers





Thank You, Health Care Team!

Celebrating National Hospital & Nursing Home Week



South Peninsula Hospital

- Thank you KPB Mayor and Assembly

QUESTIONS?



South Peninsula Hospital is the healthcare provider of choice, with a dynamic and dedicated team committed to service excellence.