

THE BOROUGH'S LAND MANAGEMENT PROGRAM

WHAT IS LAND MANAGEMENT?

- THE BOROUGH HAS THE STATUTORY AUTHORITY TO ACQUIRE, OWN, USE, MANAGE, AND DISPOSE OF LAND. THE BOROUGH HAS NUMEROUS RESPONSIBILITIES IN EACH OF THESE AREAS.

TO ACQUIRE

MUNICIPAL ENTITLEMENT LAND GRANT
TARGETED ACQUISITIONS FOR OPERATIONS
TAX COLLECTION ENFORCEMENT

TO OWN

BOUNDARY SURVEYING

TITLE RECORD KEEPING

INVENTORY MAPPING

TO USE

OPERATING SITES & CAMPUSES

GENERAL PUBLIC USES

FACILITATING FUTURE GROWTH & DEVELOPMENT

TO MANAGE

DEVELOPMENT & CONSERVATION OF RESOURCE VALUES

AUTHORIZING USES BY INDUSTRIES, NEIGHBORS, AND PARTNERS

TO DISPOSE

GENERAL SETTLEMENT

PUBLIC PURPOSES

FINANCIAL RETURN

AVOID LIABILITIES

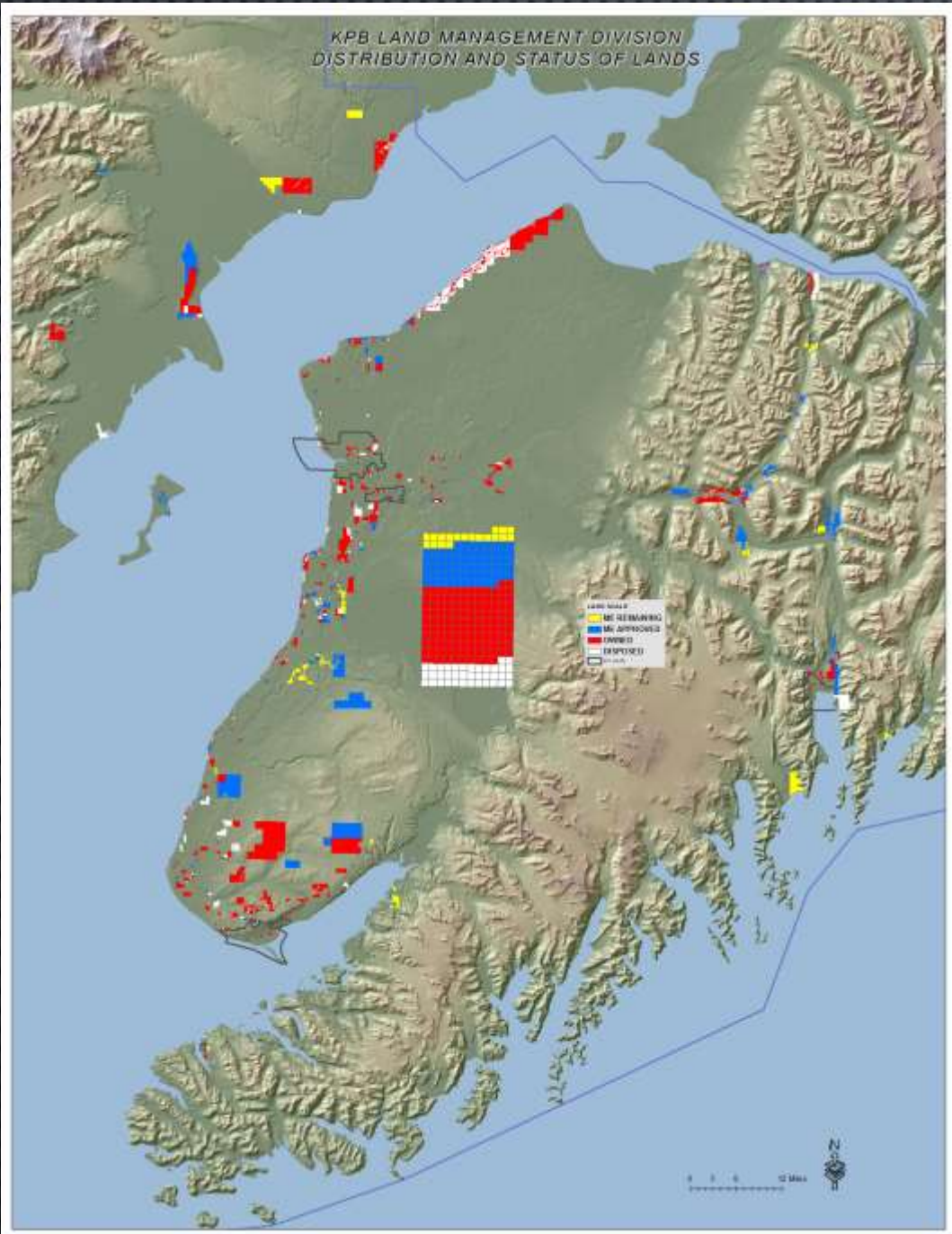
TAX FORECLOSURE SALE ADMINISTRATION

TITLE 17 BOROUGH LANDS

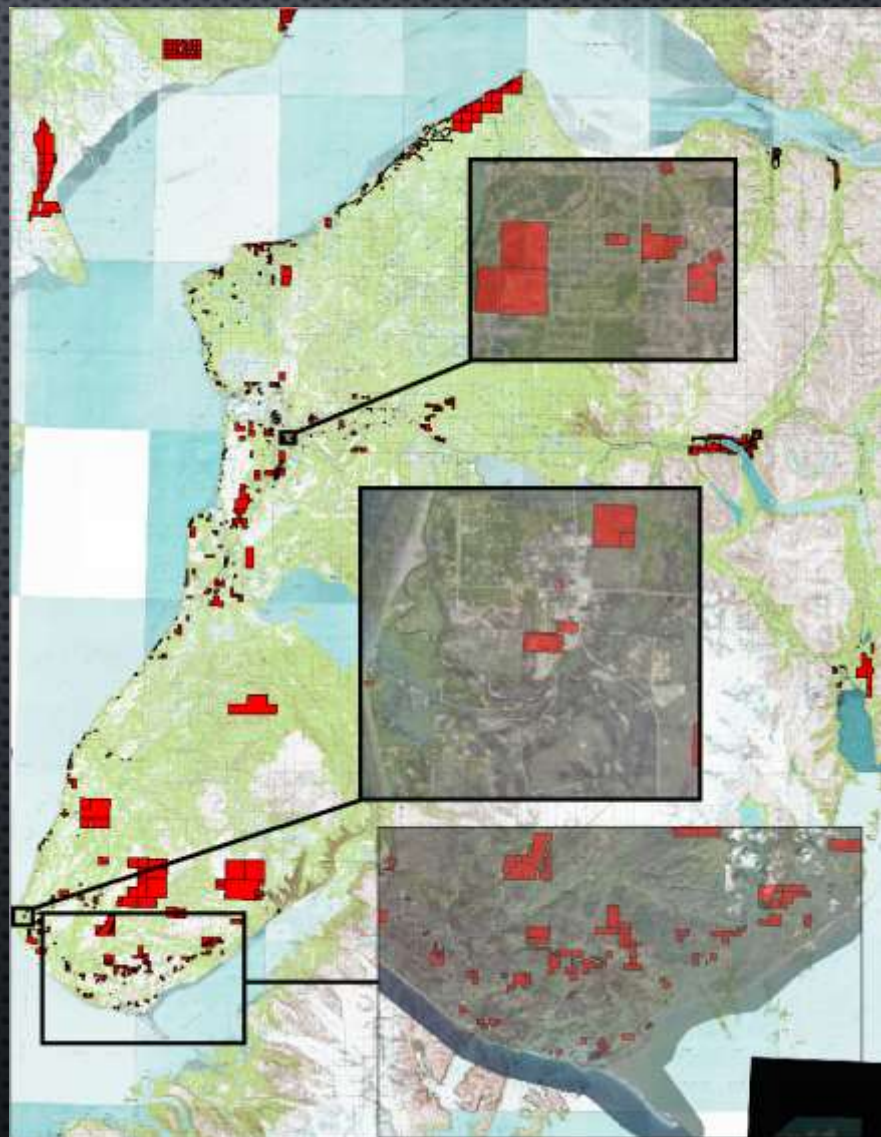
- POLICY STATEMENT
- PROCEDURES TO ACQUIRE, CLASSIFY, AUTHORIZE USES, OFFER RESOURCES, AND TO CONDUCT DISPOSALS

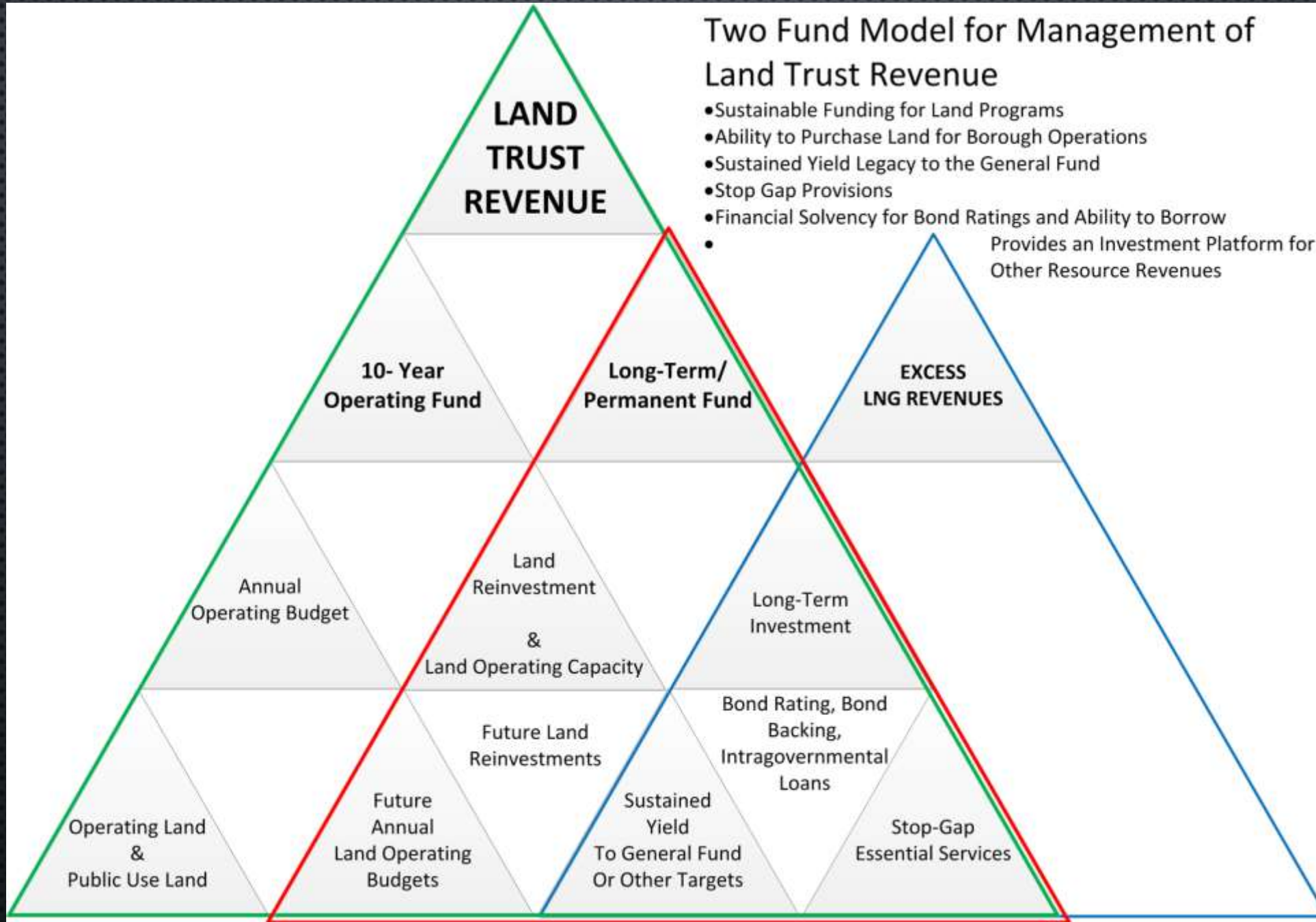
LAND USE PLANS REGARDING BOROUGH LAND MANAGEMENT

- IDENTIFIES COMMUNITY PRIORITIES & EXPECTATIONS
- PROVIDES A TRANSPARENT PROCESS FOR PUBLICLY INITIATED EFFORTS
- APPLIES LAND CLASSIFICATION TO PROMOTE DESIRED OUTCOMES

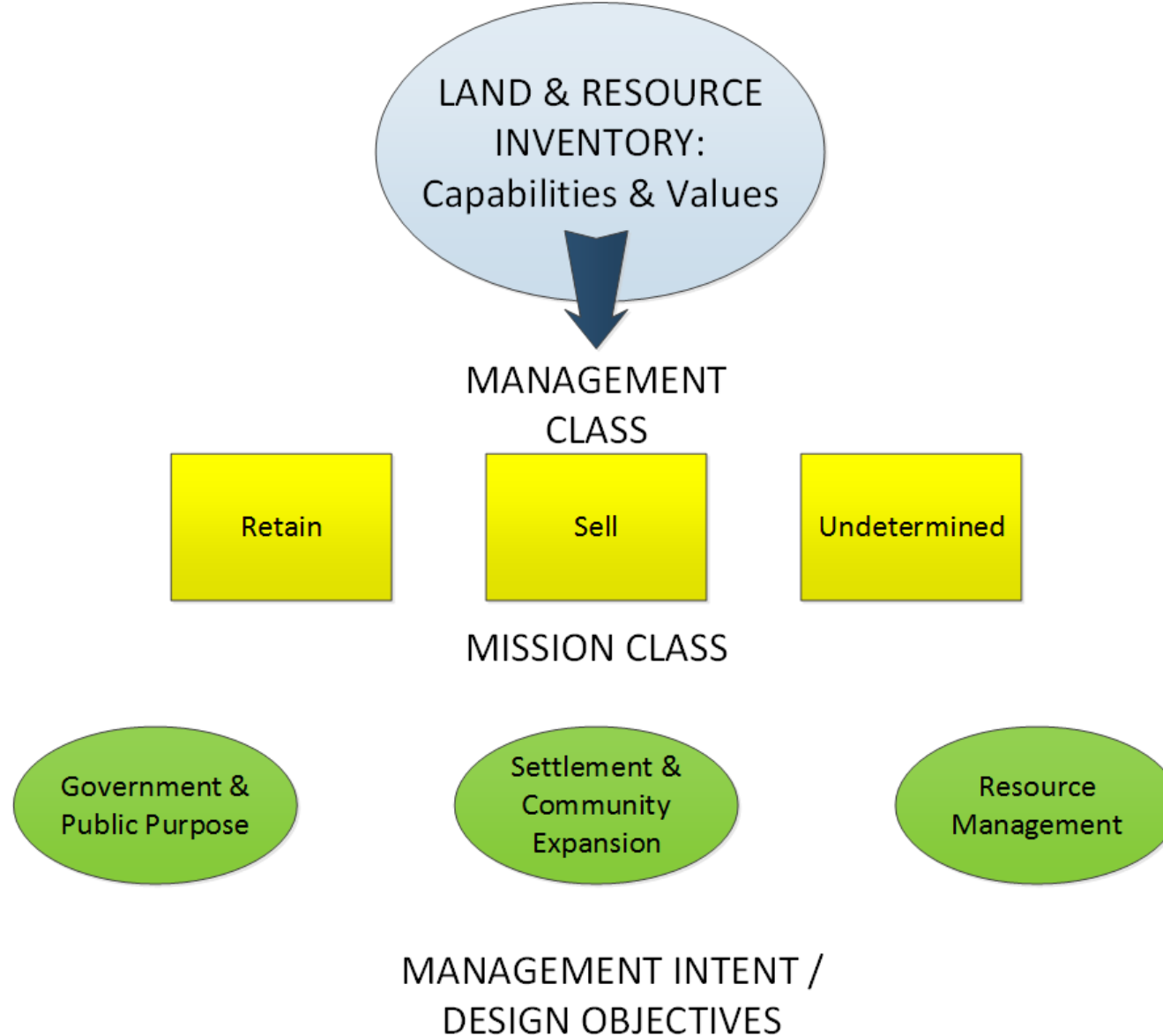


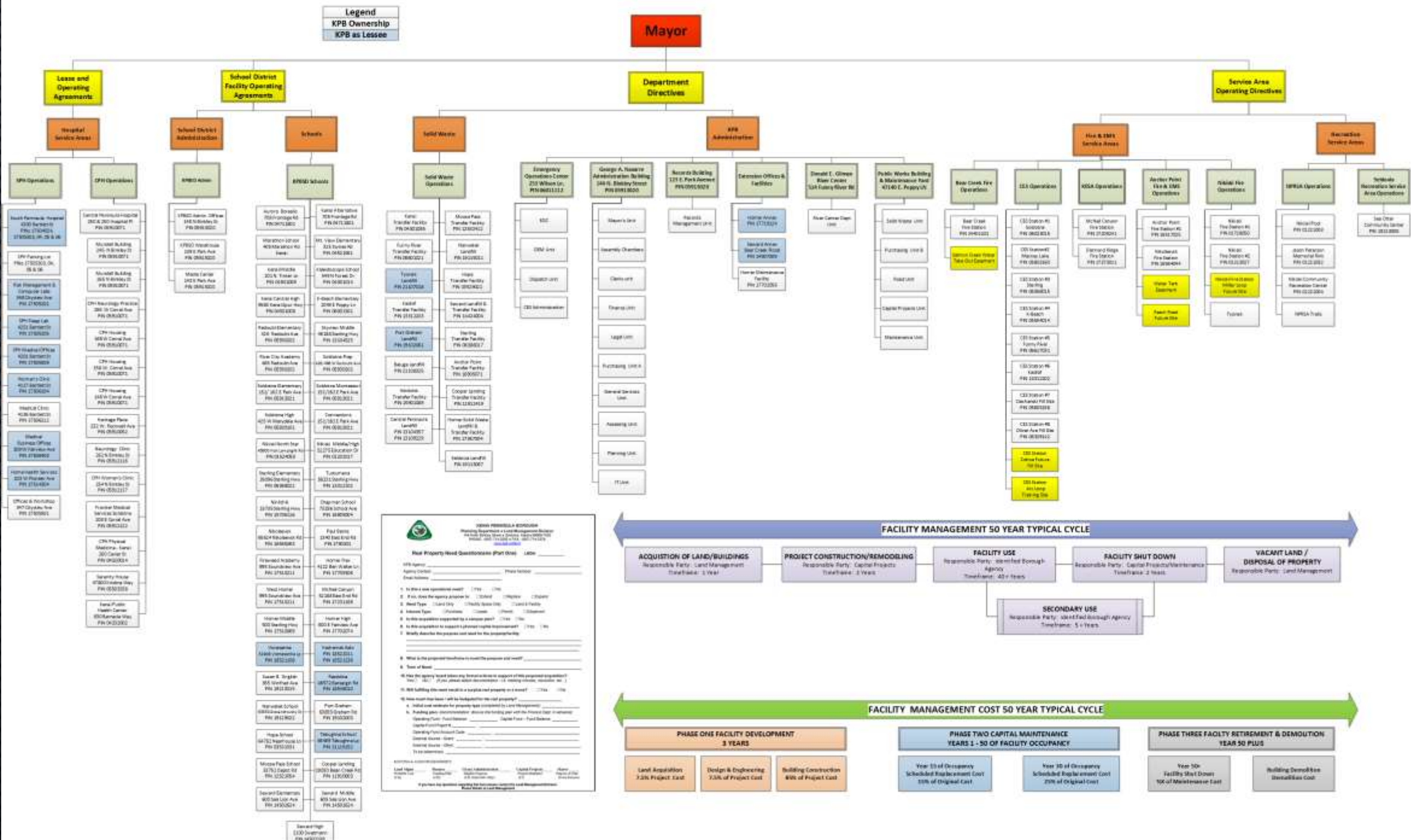
OUR LAND INVENTORY





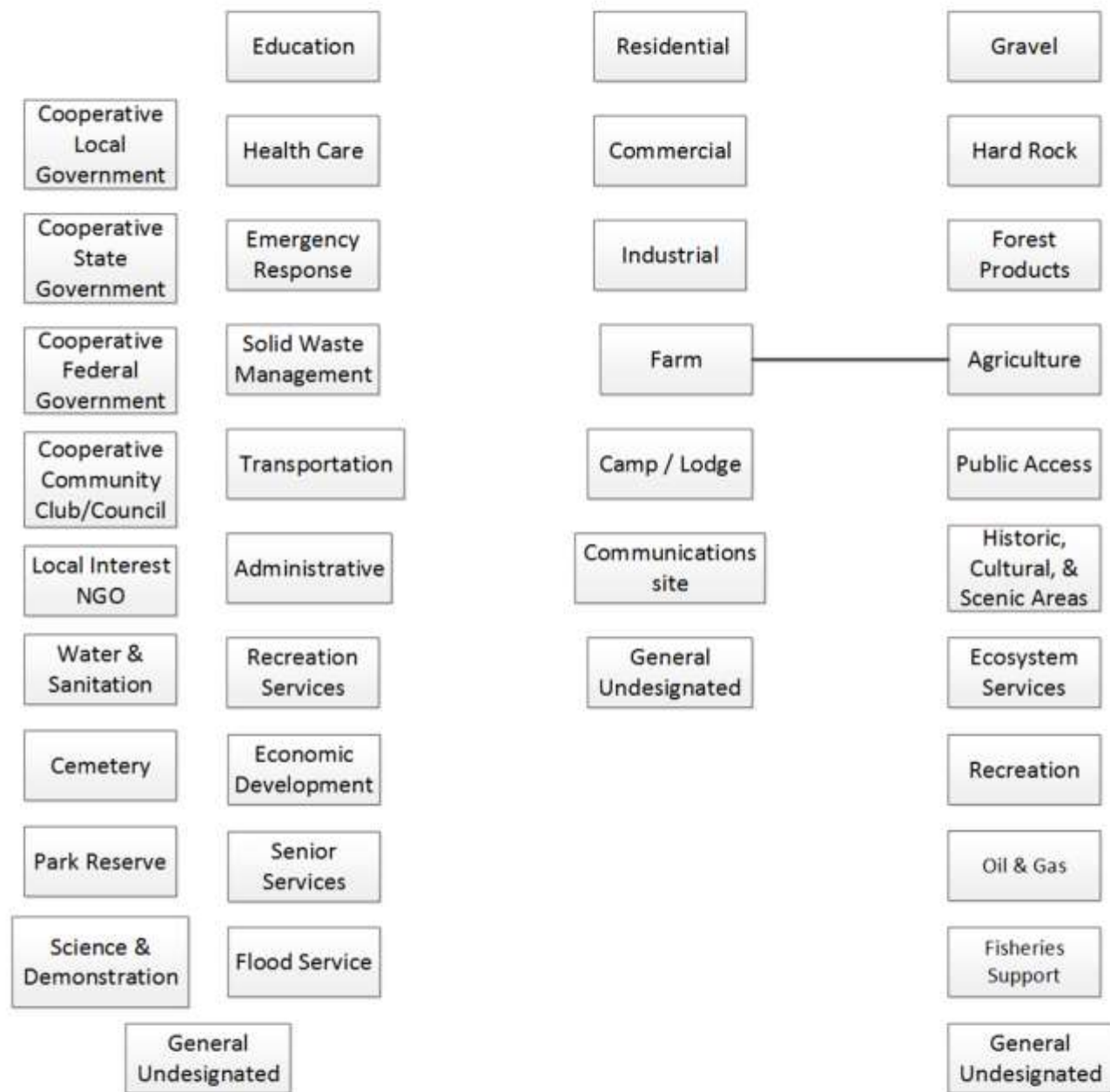
MISSION-MANAGEMENT LAND CLASSIFICATION W/ ACTIONS & USES







OUR LAND MANAGEMENT INTENTS & OBJECTIVES



OUR LAND WORKING TOOLS & ACTIONS

Undesignated

Undesignated

MANAGEMENT PLAN / MANAGEMENT ACTIONS

SURVEY	SUBDIVIDE	DEVELOP ACCESS	CONNECT UTILITIES	TIMBER HARVEST	EXPOSE MATERIALS
SELL	LEASE	PERMIT	EASEMENT	DELEGATE MANAGEMENT	CONTRACT
PLANT GRASS	PLANT TREES	MANAGE SURFACE WATER	MAINTAIN BUFFER	RECLAIM SOIL	SILVICULTURE
ACQUIRE AREA	SITE PLANNING	PERMITTING	INVESTIGATION	LOCAL OPTION ZONE	PUBLIC INFORMATION
INSPECTION	COMPLIANCE	DEBRIS REMOVAL	TRESSPASS EVICTION	ACCESS CONTROL	SIGNAGE
TITLE WORK	APPRAISAL	BILLING & COLLECTIONS	FINANCIAL MANAGEMENT	REPORTING	RECORDS MANAGEMENT

GENERALLY ALLOWABLE USES

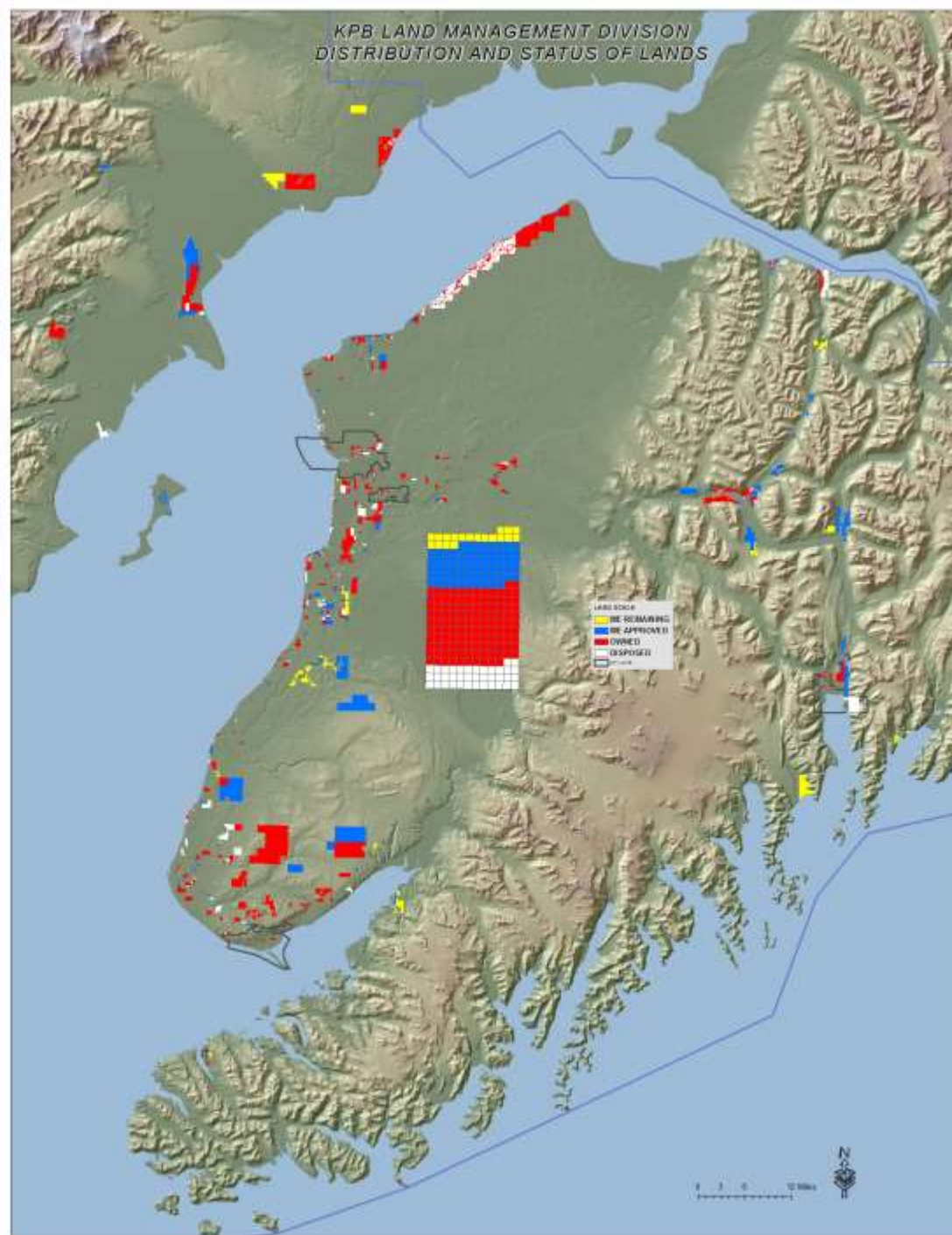
FIREWOOD	BERRIES & MUSHROOMS	TRAIL USE	NON-TIMBER FOREST PRODUCTS	APIARY	CHRISTMAS TREES
HUNTING	FISHING	CAMPING	SURVEYS & DATA COLLECTION	PARKING	

INCIDENTAL PERMITTED USES

SEISMIC	FUEL REDUCTION	SET NET UPLAND SITES	REGISTERED CABINS	PROJECT STAGING	COMMUNICATIONS
REMOTE ACCESS	OUTFITTING SITES	FILMING	SCIENCE & RESEARCH	GRAZING & HAY	

RIGHT-OF-WAY GRANTS

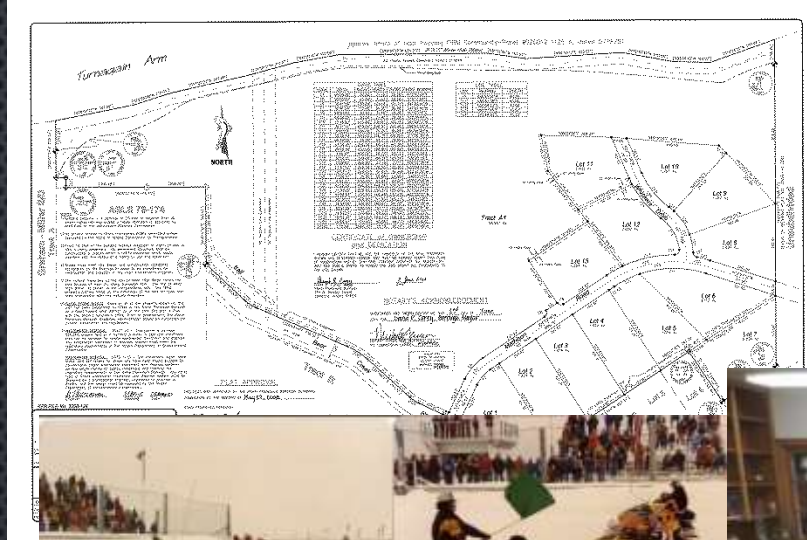
PIPELINES	PUBLIC UTILITIES	PUBLIC ROADWAYS	DRIVEWAYS	UTILITY SERVICE LINES	PORTS
-----------	------------------	-----------------	-----------	-----------------------	-------



OUR LANDS WORKING









FY 22 BUDGET

FY21 Accomplishments

- ❑ REVENUES ON TRACK FOR LAND TRUST INVESTMENT FUND STRATEGY
 - ❑ Land Sale Revenue \$1.5 M, 300% of \$500K Target
 - ❑ Reoccurring Revenue Increase Exceeding \$25 K Year over Year Benchmark
- ❑ Departmental Transition through Retirements and Rehiring
 - ❑ Fresh Team
 - ❑ Incorporated GIS
- ❑ Sterling Highway MP 45-60 Project Coordination & Land Agreements
- ❑ COVID-19 Support & CARES Broadband Project Support
- ❑ RSAC Stand-up Successful
- ❑ SoPrep Facility Utilization
- ❑ Ninilchik Fire Station Acquisition
- ❑ CES Station 1 Acquisition Continuing
- ❑ Facility Management Working Group

FY22 BUDGET

FY22 New Initiatives

- ☐ Municipal Entitlement Completion Effort 13,000 Acres
- ☐ Facility Management Strategic Plan
 - ☐ Facility Campus Boundary Mapping with GIS & Facility Operators
 - ☐ Leading to Facility Operating Agreements
- ☐ Sterling Highway MP 45-60 DOT Cooperation
 - ☐ Right-of-way Acquisition
 - ☐ Continuation of Land Agreement Work
- ☐ Parcelization of Approved Municipal Entitlement Land Units
 - ☐ Moving to a single system land inventory
 - ☐ Leading to Land Classification Initiative
- ☐ CES Station 1 Land Acquisition Objective
- ☐ Forestry Solutions for addressing Beetle Kill
 - ☐ Emergency Timber Sale Procedures on KPB Lands
 - ☐ Assist KPB with Prepositioning for Beetle Response-Mitigation Funding

FY 22 BUDGET

FY22 Challenges & Opportunities

☐ Capacity

- ☐ Onboarding and Training a new team
- ☐ Programs on Programs, Business Processes within Business Processes
- ☐ Meeting Institutional Requirements to Operate
- ☐ Complexity of Decision Making Structures
- ☐ Responding to Emergent issues
- ☐ Capable & Professional Staff, Recognizing Staffing Levels
- ☐ Succession Planning Opportunities

☐ Real Estate Markets

- ☐ Land Sales Interest
- ☐ Communication Tower Sites

☐ Resource Management

- ☐ High Interest in Agriculture
- ☐ Emerging Interest in Forestry
 - ☐ Possibility of a Forest Management Plan

☐ Facility Management Working Group

- ☐ Strategy to position for Comprehensive Land Management Plan

LAND SALES

2021 General Land Sale

Timing- Summer 2021

Method- Live/Online Auction

2021 Tax Foreclosure Sale

Timing- November 2021 Goal

Method- Live Auction

5-year Land Sale Planning

THANK YOU

Julie Denison, Land Management Technician III

Trevor Kauffman, Land Management Agent- Resource Management

Aaron Hughes, Land Management Agent- Realty Specialist

Avery Harrison, Land Management Admin Assistant

Marcus Mueller, Land Management Officer & GIS Manager