

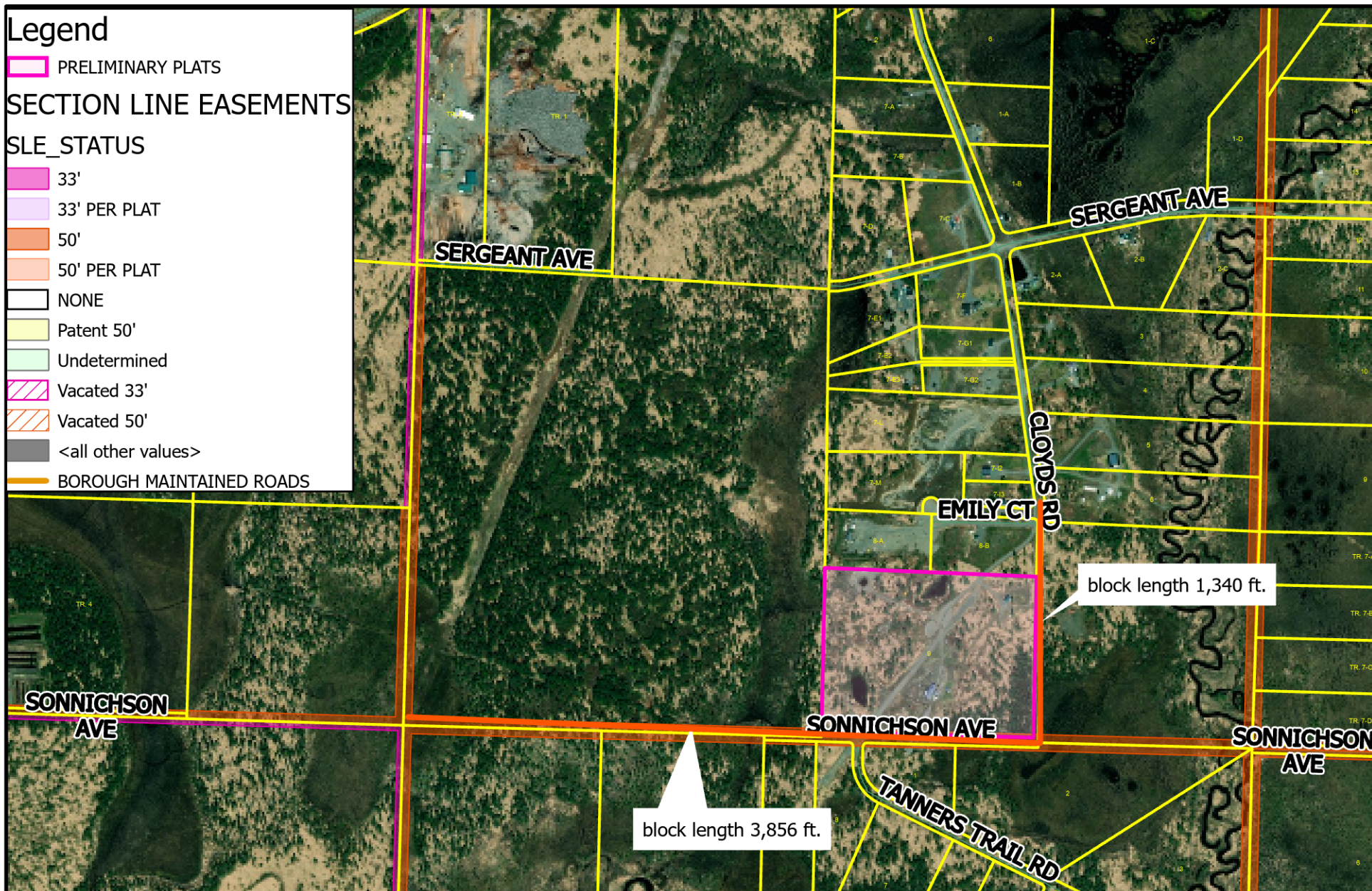
Legend

PRELIMINARY PLATS

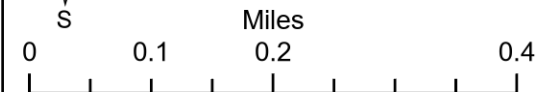
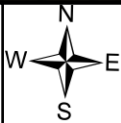
SECTION LINE EASEMENTS

SLE_STATUS

- 33'
- 33' PER PLAT
- 50'
- 50' PER PLAT
- NONE
- Patent 50'
- Undetermined
- Vacated 33'
- Vacated 50'
- <all other values>
- BOROUGH MAINTAINED ROADS



The information depicted hereon is for a graphical representation only of best available sources. The Kenai Peninsula Borough assumes no responsibility for any errors on this map.



AERIAL IMAGERY 2019

Kenai Watershed Forum Ecosystem mapping

Date: 5/28/2021
1:50 PM
Scott Huff
Platting Manager